



Xmagpot - T3
WIRELESS 2-IN-1 ADAPTER

ENGLISH
INTRODUCTION | USER MANUAL

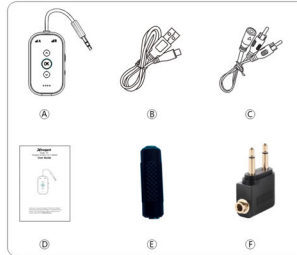
ACTIVATE WARRANTY
Xmagpot
www.iswiitech.com



1. Lifetime Extended Warranty
 2. Technical support if you have any usage problems
- Email : info@iswiitech.com

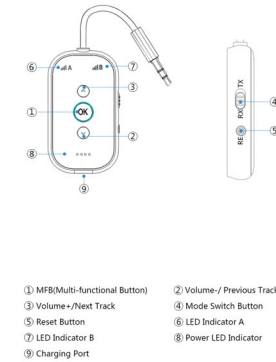
CE RoHS MADE IN CHINA

What's in the box?

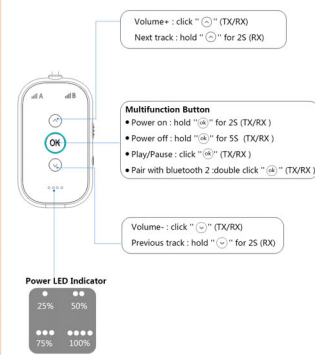


- Package Contents :**
- A Wireless 2-in-1 Adapter x 1
 - B Type-c Charging Cable x 1
 - C 3.5mm Female to 2 RCA Male Cable x 1
 - D User Guide x 1
 - E 3.5mm Audio Plug x 1
 - F Airplane headphone Adapter

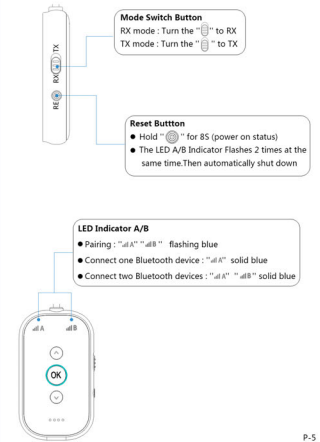
Product Diagram



Basic Operation



Basic Operation



How to pair with one-to-two in RX mode

- 1. Power on**
 - Hold 'OK' for 2S
 - 'A' 'B' flashing blue
- 2. Connect device**
 - Turn on your bluetooth device . (phone , tablet , etc .)
 - Search Bluetooth devices "T3". Tap on "T3" to connect .
 - 'A' will be solid blue .
- 3. Connect the second device**
 - Double click 'OK'
 - 'A' 'B' flashing blue
 - Turn on your bluetooth device . (phone , tablet , etc .)
 - Search Bluetooth devices "T3". Tap on "T3" to connect .
 - 'A' will also be solid blue .

NOTES :

- After 3 minutes , if not any bluetooth devices to connect , the adapter will shut down
- If the adapter has already connected to two Bluetooth devices , double click the 'OK' button , it will not enter pairing mode anymore.

How to pair with one-to-two in TX mode

- 1. Power on**
 - Hold 'OK' for 2S
 - 'A' 'B' flashing blue
- 2. Connect audio**
 - Turn on your bluetooth device . (BT Speaker , BT Headset , etc .)
 - Automatically search and connect .
 - 'A' will be solid blue . (connected)
- 3. Connect the second device**
 - Double click 'OK'
 - 'A' 'B' flashing blue
 - Turn on your bluetooth device . (BT Speaker , BT Headset , etc .)
 - Automatically search and connect .
 - 'A' will also be solid blue .

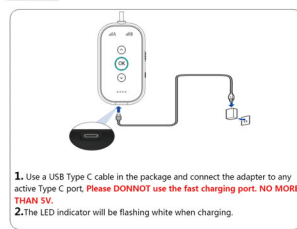
NOTES :

- Make sure there are no other Bluetooth devices within 10 meters of the adapter.

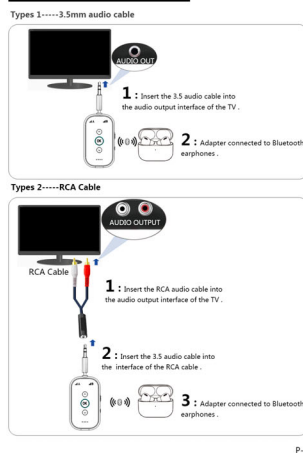
Specifications

Bluetooth Version	V5.4
Bluetooth Profile	A2DP/AVRCP
Audio Codec	SBC/aptX
Range	33ft/10m
Charging Power	DC 5V
Battery Capacity	250mAh
Working Time	Approx.18hours
Charging Time	2 hours
Dimension(L*W*H)	62*36*12mm
Weight	50g

Charging



How to connect to TV in TX mode



PRECAUTIONS

- When power is low or the adapter is not used for a long time , it should be charged before use to prevent the product from working abnormally or receiving battery damage.
- Bluetooth signals will be blocked and absorbed by surrounding objects. For the best sound quality , try to use the adapter in a direct line-of-sight with your connected device.
- The adapter has a built-in lithium battery , please charge frequently when using it .
- Please keep the adapter away from water or other liquids to avoid damage.
- If you have any problems , please feel free to contact us at service@iswiitech.com and we will be happy to help you.

ONE
THE
MOMENT



Need any help?
If there is any issue with your order , please contact below email to ask for warranty , and you don't have to return the defective one to amazon.
Email: info@comtoft.com
Facebook: [comtoft.com](https://www.facebook.com/comtoft.com) Europe
PS: We provide warranty even though the return window was closed.

FCC Statement

This device complies with Part 15 of the FCC rules. Operation is subject to the following two conditions: 1) this device may not cause harmful interference, and 2) this device must accept any interference received, including interference that may cause undesired operation.

Note: This equipment has been tested and found to comply with the limits for a Class B digital device, pursuant to part 15 of the FCC Rules. These limits are designed to provide reasonable protection against harmful interference in a residential installation.

This equipment generates uses and can radiate radio frequency energy and, if not installed and used in accordance with the instructions, may cause harmful interference to radio communications. However, there is no guarantee that interference will not occur in particular installation. If this equipment does cause harmful interference to radio or television reception, which can be determined by turning the equipment off and on, the user is encouraged to try to correct the interference by one or more of the following measures:

- Reorient or relocate the receiving antenna.

- Increase the separation between the equipment and receiver.

- Connect the equipment into an outlet on a circuit different from that to which the receiver is connected.

- Consult the dealer or an experienced radio/TV technician for help.

Changes or modifications not expressly approved by the party responsible for compliance could void the user's authority to operate the equipment.

FCC Radiation Exposure Statement

This device complies with FCC RF radiation exposure limits set forth for an uncontrolled environment. The device can be used in portable exposure condition without restriction.