



SAR TEST REPORT  
For  
CIBER S.A.C.  
tablet  
Test Model: B610A103A

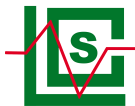
Prepared for : CIBER S.A.C.  
Address : Av. Monterrico Chico N° 121 Dpto. 101 - Santiago de Surco,  
Lima, Peru

Prepared by : Shenzhen LCS Compliance Testing Laboratory Ltd.  
Address : 101, 201 Bldg A & 301 Bldg C, Juji Industrial Park  
Yabianxueziwei, Shajing Street, Baoan District, Shenzhen,  
518000, China  
Tel : (86)755-82591330  
Fax : (86)755-82591332  
Web : www.LCS-cert.com  
Mail : webmaster@LCS-cert.com

Date of receipt of test sample : June 20, 2022  
Number of tested samples : 2  
Sample No. : A060622215-1, A060622215-2  
Serial number : Prototype  
Date of Test : June 20, 2022~July 06, 2022  
Date of Report : July 06, 2022



Scan code to check authenticity

**SAR TEST REPORT****Report Reference No.....: LCSA060622215EB**

Date Of Issue.....: July 06, 2022

**Testing Laboratory Name.....: Shenzhen LCS Compliance Testing Laboratory Ltd.**

Address.....: 101, 201 Bldg A &amp; 301 Bldg C, Juji Industrial Park Yabianxueziwei, Shajing Street, Baoan District, Shenzhen, 518000, China

Testing Location/ Procedure.....: Full application of Harmonised standards ■  
Partial application of Harmonised standards □  
Other standard testing method □**Applicant's Name.....: CIBER S.A.C.**

Address.....: Av. Monterrico Chico N' 121 Dpto. 101 - Santiago de Surco, Lima, Peru

**Test Specification:**

Standard.....: IEEE Std C95.1, 2019/ IEEE Std 1528™-2013/FCC Part 2.1093

Test Report Form No.....: LCSEMC-1.0

TRF Originator.....: Shenzhen LCS Compliance Testing Laboratory Ltd.

Master TRF.....: Dated 2011-03

**Shenzhen LCS Compliance Testing Laboratory Ltd. All rights reserved.**

This publication may be reproduced in whole or in part for non-commercial purposes as long as the Shenzhen LCS Compliance Testing Laboratory Ltd. is acknowledged as copyright owner and source of the material. Shenzhen LCS Compliance Testing Laboratory Ltd. takes no responsibility for and will not assume liability for damages resulting from the reader's interpretation of the reproduced material due to its placement and context.

**Test Item Description.....: tablet**

Trade Mark.....: Ciber

Model/Type Reference.....: B610A103A

Operation Frequency.....: GSM 850,1900;WCDMA II,V;  
LTE2,4, 7;WLAN2.4G,5.2G,5.8G and Bluetooth5.0.Ratings.....: Input: 5V 2000mA  
For AC Adapter Input: 100-240V~, 50/60Hz, 0.35A Max  
Adapter Output: 5V 2000mA  
DC 3.8V by Rechargeable Li-ion Battery, 6500mAh**Result .....: Positive****Compiled by:**

Jay zhan

Jay Zhan/ File administrators

**Supervised by:**

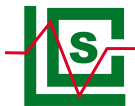
Jin Wang

Jin Wang/ Technique principal

**Approved by:**

Gavin Liang

Gavin Liang/ Manager



## SAR -- TEST REPORT

<b>Test Report No. :</b>	<b>LCSA060622215EB</b>	<u>July 06, 2022</u> Date of issue
--------------------------	------------------------	---------------------------------------

Type / Model.....	: B610A103A
EUT.....	: tablet
<b>Applicant.....</b>	<b>: CIBER S.A.C.</b>
Address.....	: Av. Monterrico Chico N' 121 Dpto. 101 - Santiago de Surco, Lima, Peru
Telephone.....	: /
Fax.....	: /
<b>Manufacturer.....</b>	<b>: Qingdao Hainergy Technology Corp., Ltd</b>
Address.....	: Qingdao International Innovation Park A1602, Ke Yuan Wei Yi Road, Laoshan District, Qingdao, Shandong Province, China
Telephone.....	: /
Fax.....	: /
<b>Factory.....</b>	<b>: /</b>
Address.....	: /
Telephone.....	: /
Fax.....	: /

<b>Test Result</b>	<b>Positive</b>
--------------------	-----------------

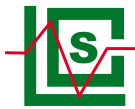
The test report merely corresponds to the test sample.

It is not permitted to copy extracts of these test result without the written permission of the test laboratory.



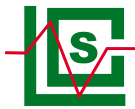
## Revision History

Revision	Issue Date	Revisions	Revised By
000	July 06, 2022	Initial Issue	Gavin Liang



## TABLE OF CONTENTS

<b>1. TEST STANDARDS AND TEST DESCRIPTION .....</b>	<b>6</b>
1.1. TEST STANDARDS .....	6
1.2. TEST DESCRIPTION .....	6
1.3. GENERAL REMARKS .....	6
1.4. PRODUCT DESCRIPTION .....	6
1.5. STATEMENT OF COMPLIANCE .....	9
<b>2. TEST ENVIRONMENT .....</b>	<b>10</b>
2.1. TEST FACILITY .....	10
2.2. ENVIRONMENTAL CONDITIONS .....	10
2.3. SAR LIMITS .....	10
2.4. EQUIPMENTS USED DURING THE TEST .....	11
<b>3. SAR MEASUREMENTS SYSTEM CONFIGURATION .....</b>	<b>12</b>
3.1. SARMEASUREMENT SET-UP .....	12
3.2. OPENSAR E-FIELD PROBE SYSTEM .....	13
3.3. PHANTOMS .....	14
3.4. DEVICE HOLDER .....	14
3.5. SCANNING PROCEDURE .....	15
3.6. DATA STORAGE AND EVALUATION .....	16
3.7. TISSUE DIELECTRIC PARAMETERS FOR HEAD AND BODY PHANTOMS .....	18
3.8. TISSUE EQUIVALENT LIQUID PROPERTIES .....	18
3.9. SYSTEM CHECK .....	19
3.10. SAR MEASUREMENT PROCEDURE .....	22
3.11. POWER REDUCTION .....	27
3.12. POWER DRIFT .....	27
<b>4. TEST CONDITIONS AND RESULTS .....</b>	<b>28</b>
4.1. CONDUCTED POWER RESULTS .....	28
4.2. TRANSMIT ANTENNAS AND SAR MEASUREMENT POSITION .....	40
4.3. SAR MEASUREMENT RESULTS .....	41
4.4. SIMULTANEOUS TX SAR CONSIDERATIONS .....	44
4.5. SAR MEASUREMENT VARIABILITY .....	46
4.6. GENERAL DESCRIPTION OF TEST PROCEDURES .....	46
4.7. MEASUREMENT UNCERTAINTY (450MHZ-6GHz) .....	47
4.8. SYSTEM CHECK RESULTS .....	48
4.9. SAR TEST GRAPH RESULTS .....	55
<b>5. CALIBRATION CERTIFICATES .....</b>	<b>65</b>
5.1. PROBE-EPGO324 CALIBRATION CERTIFICATE .....	65
5.2. SID835DIPOLE CALIBRATION CERITICATE .....	75
5.3. SID1800 DIPOLE CALIBRATION CERTIFICATE .....	86
5.4. SID1900 DIPOLE CALIBRATION CERTIFICATE .....	97
5.5. SID2450 DIPOLE CALIBRATION CERTIFICATE .....	108
5.6. SID2600 DIPOLE CALIBRATION CERTIFICATE .....	119
5.7. SID5G-6G DIPOLE CALIBRATION CERITICATE .....	130
<b>6. PHOTOGRAPHS OF THE LIQUID .....</b>	<b>143</b>
<b>7. PHOTOGRAPHS OF THE TEST .....</b>	<b>147</b>
<b>8. EUT PHOTOGRAPHS .....</b>	<b>148</b>



# 1. TEST STANDARDS AND TEST DESCRIPTION

## 1.1. Test Standards

[IEEE Std C95.1-2019](#): IEEE Standard for Safety Levels with Respect to Human Exposure to Electric, Magnetic, and Electromagnetic Fields, 0 Hz to 300 GHz. It specifies the maximum exposure limit of 1.6 W/kg as averaged over any 1 gram of tissue for portable devices being used within 20 cm of the user in the uncontrolled environment.

[IEEE Std 1528™-2013](#): IEEE Recommended Practice for Determining the Peak Spatial-Average Specific Absorption Rate (SAR) in the Human Head from Wireless Communications Devices: Measurement Techniques.

[FCC Part 2.1093 Radiofrequency Radiation Exposure Evaluation](#): Portable Devices

[KDB447498 D01 General RF Exposure Guidance v06](#): Mobile and Portable Device RF Exposure Procedures and Equipment Authorization Policies

[KDB447498 D02 SAR Procedures for Dongle Xmtr v02r01](#): SAR Measurement Procedures For USB Dongle Transmitters.

[KDB865664 D01 SAR Measurement 100 MHz to 6 GHz v01r04](#): SAR Measurement Requirements for 100 MHz to 6 GHz

[KDB865664 D02 RF Exposure Reporting v01r02](#): RF Exposure Compliance Reporting and Documentation Considerations

[KDB 248227 D01 802.11 Wi-Fi SAR v02r02](#): SAR GUIDANCE FOR IEEE 802.11 (Wi-Fi) TRANSMITTERS

[KDB941225 D01 3G SAR Procedures](#): 3G SAR MEASUREMENT PROCEDURES

[KDB 941225 D05 SAR for LTE Devices](#): SAR Evaluation Considerations For LTE Devices

[KDB 616217 D04 SAR for laptop and tablets v01r02](#): SAR Evaluation procedures for umpc mini-tablet devices

## 1.2. Test Description

The EUT battery must be fully charged and checked periodically during the test to ascertain uniform power. And Test device is identical prototype.

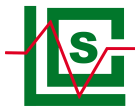
## 1.3. General Remarks

Date of receipt of test sample	:	June 20, 2022
Testing commenced on	:	June 20, 2022
Testing concluded on	:	July 06, 2022

## 1.4. Product Description

The CIBER S.A.C.'s Model: B610A103A or the "EUT" as referred to in this report; more general information as follows, for more details, refer to the user's manual of the EUT.

General Description	
EUT :	tablet
Model/Type reference:	B610A103A
Additional Model No.	/
Model Declaration:	/
Hardware Version	WT_F960_6762_BED_MB_V1.0
Firmware Version:	android 12
Power supply:	Input: 5V $\pm$ 2000mA For AC Adapter Input: 100-240V~, 50/60Hz, 0.35A Max Adapter Output: 5V $\pm$ 2000mA DC 3.8V by Rechargeable Li-ion Battery, 6500mAh
<i>The EUT is tablet. the tablet is intended for WLAN transmission. It is equipped with WiFi 2.4G, 5.2G, 5.8G; GSM 850, 1900; WCDMA Band II, Band V; LTE 2, 4, 7. For more information see the following datasheet</i>	



Technical Characteristics	
LTE	
Operation Band:	<input checked="" type="checkbox"/> E-UTRA Band 2(U.S.-Band) <input checked="" type="checkbox"/> E-UTRA Band 4(U.S.-Band) <input checked="" type="checkbox"/> E-UTRA Band 7(U.S.-Band) <input checked="" type="checkbox"/> E-UTRA Band 8(Non U.S.-Band) <input checked="" type="checkbox"/> E-UTRA Band 28(Non U.S.-Band) <input checked="" type="checkbox"/> E-UTRA Band 40(Non U.S.-Band)
Modulation Type:	QPSK/16QAM
Release Version:	R7
Power Class:	Class 3
Antenna Description:	PIFA Antenna 0.5dBi (max.) For E-UTRA Band 2 0.5dBi (max.) For E-UTRA Band 4 0.5dBi (max.) For E-UTRA Band 7
Bluetooth	
Frequency Range:	2402MHz ~ 2480MHz
Chanel Number:	79 channels for Bluetooth V5.0 (DSS) 40 channels for Bluetooth V5.0 (DTS)
Chanel Spacing:	1MHz for Bluetooth V5.0 (DSS) 2MHz for Bluetooth V5.0 (DTS)
Modulation Type;	GFSK, $\pi/4$ -DQPSK, 8-DPSK for Bluetooth V5.0(DSS) GFSK for Bluetooth V5.0 (DTS)
Bluetooth Version:	V5.0
Antenna Description:	PIFA Antenna, 0.5dBi(Max.)
WIFI 2.4G	
Frequency Range:	2412MHz-2462MHz
Type of Modulation:	IEEE 802.11b: DSSS (CCK, DQPSK, DBPSK) IEEE 802.11g: OFDM (64QAM, 16QAM, QPSK, BPSK) IEEE 802.11n: OFDM (64QAM, 16QAM, QPSK, BPSK)
Channel number:	11 channels for 20MHz bandwidth (2412~2462MHz) 7 channels for 40MHz bandwidth (2422~2452MHz)
Channel separation:	5MHz
Antenna Description:	PIFA Antenna, 0.5dBi(Max.)
WIFI 5.2G	
Frequency Range:	5180MHz-5240MHz
Type of Modulation:	IEEE 802.11a/n/ac: OFDM (256QAM, 64QAM, 16QAM, QPSK, BPSK)
Channel number:	4 channels for 20MHz bandwidth (5180-5240MHz) 2 channels for 40MHz bandwidth (5190~5230MHz) 1 channels for 80MHz bandwidth (5210MHz)
Channel separation:	5MHz
Antenna Description:	PIFA Antenna, 0.5dBi(Max.)
WIFI 5.8G	
Frequency Range:	5745-5825MHz
Type of Modulation:	IEEE 802.11a/n/ac: OFDM (256QAM, 64QAM, 16QAM, QPSK, BPSK)
Channel number:	5 channels for 20MHz bandwidth(5745-5825MHz) 2 channels for 40MHz bandwidth(5755~5795MHz) 1 channels for 80MHz bandwidth(5775MHz)
Channel separation:	/
Antenna Description:	PIFA Antenna, 0.5dBi(Max.)
UMTS	
Operation Band:	<input checked="" type="checkbox"/> WCDMA Band II (U.S.-Band) <input checked="" type="checkbox"/> WCDMA Band V (U.S.-Band) <input type="checkbox"/> WCDMA Band IV (U.S.-Band) <input type="checkbox"/> WCDMA Band I (EU-Band) <input checked="" type="checkbox"/> WCDMA Band VIII (EU-Band)
Modulation Type:	QPSK,16QAM
WCDMA Release Version:	R7



Antenna Description:	PIFA Antenna 0.5dBi (max.) For WCDMA Band II 0.5dBi (max.) For WCDMA Band V	
GSM		
Support Band:	<input checked="" type="checkbox"/> GSM 900 (EU-Band) <input checked="" type="checkbox"/> GSM 850 (U.S.-Band)	<input checked="" type="checkbox"/> DCS 1800 (EU-Band) <input checked="" type="checkbox"/> PCS 1900 (U.S.-Band)
Release Version:	R99	
GPRS Class	Class 12	
EGPRS Class	Class 12	
Modulation Type:	GMSK for GSM/GPRS; GMSK/8PSK for EGPRS	
Antenna Description:	PIFA Antenna 0.5dBi (max.) For GSM 850 0.5dBi (max.) For PCS 1900	
GPS function	Support and only RX	
FM function	Support and only RX	





## 1.5. Statement of Compliance

The maximum of results of SAR found during testing for B610A103A are follows:

### <Highest Reported standalone SAR Summary>

Classment Class	Frequency Band	Hotspot (Report SAR <sub>1-g</sub> (W/kg))	Body-worn (Report SAR <sub>1-g</sub> (W/kg))
		(Separation Distance 0mm)	
PCB	GSM 850	0.350	0.350
	GSM1900	0.713	0.713
	WCDMA Band V	0.309	0.309
	WCDMA Band II	0.363	0.363
	LTE band 2	0.305	0.305
	LTE band 4	0.436	0.436
	LTE band 7	0.281	0.281
DTS	WIFI2.4G	0.389	0.389
NII	WIFI5.2G	0.323	0.323
	WIFI5.8G	0.232	0.232

This device is in compliance with Specific Absorption Rate (SAR) for general population/uncontrolled exposure limits (1.6 W/kg) specified in FCC 47 CFR part 2 (2.1093) and ANSI/IEEE C95.1-2019, and had been tested in accordance with the measurement methods and procedures specified in IEEE 1528-2013.

### <Highest Reported simultaneous SAR Summary>

Exposure Position	Classment Class	Highest Reported Simultaneous Transmission SAR <sub>1-g</sub> (W/kg)
Body-worn (hotspot open)	PCB	1.102
	DTS	



## 2. TEST ENVIRONMENT

### 2.1. Test Facility

The test facility is recognized, certified, or accredited by the following organizations:

Site Description

EMC Lab.

: NVLAP Accreditation Code is 600167-0.

FCC Designation Number is CN5024.

CAB identifier is CN0071.

CNAS Registration Number is L4595.

Test Firm Registration Number: 254912.

### 2.2. Environmental conditions

During the measurement the environmental conditions were within the listed ranges:

Temperature:	18-25 ° C
Humidity:	40-65 %
Atmospheric pressure:	950-1050mbar

### 2.3. SAR Limits

FCC Limit (1g Tissue)

EXPOSURE LIMITS	SAR (W/kg)	
	(General Population / Uncontrolled Exposure Environment)	(Occupational / Controlled Exposure Environment)
Spatial Average(averaged over the whole body)	0.08	0.4
Spatial Peak(averaged over any 1 g of tissue)	1.6	8.0
Spatial Peak(hands/wrists/ feet/anklesaveraged over 10 g)	4.0	20.0

Population/Uncontrolled Environments are defined as locations where there is the exposure of individual who have no knowledge or control of their exposure.

Occupational/Controlled Environments are defined as locations where there is exposure that may be incurred by people who are aware of the potential for exposure (i.e. as a result of employment or occupation).



## 2.4. Equipments Used during the Test

Item	Equipment	Manufacturer	Model No.	Serial No.	Cal Date	Due Date
1	PC	Lenovo	G5005	MY42081102	N/A	N/A
2	SAR Measurement system	SATIMO	4014_01	SAR_4014_01	N/A	N/A
3	Signal Generator	Agilent	E4438C	MY49072627	2022-06-10	2023-06-11
4	Multimeter	Keithley	Multimeter 2000	4059164	2021-11-13	2022-11-12
5	S-parameter Network Analyzer	Agilent	8753ES	US38432944	2021-11-13	2022-11-12
6	Wideband Radio Communication Tester	R&S	CMW500	103818-1	2021-11-20	2022-11-19
7	E-Field PROBE	MVG	SSE2	SN 31/17 EPG0324	2021-10-06	2022-10-05
8	DIPOLE 835	SATIMO	SID 835	SN 07/14 DIP 0G835-303	2021-09-29	2024-09-28
9	DIPOLE 1800	SATIMO	SID 1800	SN 07/14 DIP 1G800-301	2021-09-29	2024-09-28
10	DIPOLE 1900	SATIMO	SID 1900	SN 38/18 DIP 1G900-466	2021-09-22	2024-09-21
11	DIPOLE 2450	SATIMO	SID 2450	SN 07/14 DIP 2G450-306	2021-09-29	2024-09-28
12	DIPOLE 2600	SATIMO	SID 2600	SN 38/18 DIP 2G600-468	2021-09-22	2024-09-21
13	DIPOLE 5000-6000	MVG	SWG5500	SN 49/16 WGA 43	2021-09-22	2024-09-21
14	COMOSAR OPENCoaxial Probe	SATIMO	OCPG 68	SN 40/14 OCPG68	2021-11-13	2022-11-12
15	SAR Locator	SATIMO	VPS51	SN 40/14 VPS51	2021-11-13	2022-11-12
16	Communication Antenna	SATIMO	ANTA57	SN 39/14 ANTA57	2021-11-13	2022-11-12
17	FEATURE PHONEPOSITIONING DEVICE	SATIMO	MSH98	SN 40/14 MSH98	N/A	N/A
18	DUMMY PROBE	SATIMO	DP60	SN 03/14 DP60	N/A	N/A
19	SAM PHANTOM	SATIMO	SAM117	SN 40/14 SAM117	N/A	N/A
20	Liquid measurement Kit	HP	85033D	3423A03482	2021-11-13	2022-11-12
21	Power meter	Agilent	E4419B	MY45104493	2022-06-10	2023-06-11
22	Power meter	Agilent	E4419B	MY45100308	2021-11-20	2022-11-19
23	Power sensor	Agilent	E9301H	MY41495616	2021-11-20	2022-11-19
24	Power sensor	Agilent	E9301H	MY41495234	2022-06-10	2023-06-11
26	Directional Coupler	MCLI/USA	4426-20	03746	2022-06-10	2023-06-11

### Note:

- 1) Per KDB865664D01 requirements for dipole calibration, the test laboratory has adopted three year extended calibration interval. Each measured dipole is expected to evaluate with following criteria at least on annual interval.
  - a) There is no physical damage on the dipole;
  - b) System check with specific dipole is within 10% of calibrated values;
  - c) The most recent return-loss results, measured at least annually, deviates by no more than 20% from the previous measurement;
  - d) The most recent measurement of the real or imaginary parts of the impedance, measured at least annually is within 5Ω from the previous measurement.
- 2) Network analyzer probe calibration against air, distilled water and a shorting block performed before measuring liquid parameters.

### 3. SAR MEASUREMENTS SYSTEM CONFIGURATION

### 3.1. SARMeasurement Set-up

The OPENSAR system for performing compliance tests consist of the following items:

A standard high precision 6-axis robot (KUKA) with controller and software.

## KUKA Control Panel (KCP)

A dosimetric probe, i.e., an isotropic E-field probe optimized and calibrated for usage in tissue simulating liquid. The probe is equipped with a Video Positioning System(VPS).

The stress sensor is composed with mechanical and electronic when the electronic part detects a change on the electro-mechanical switch,It sends an "Emergency signal" to the robot controller that to stop robot's moves

A computer operating Windows XP.

OPENSAR software

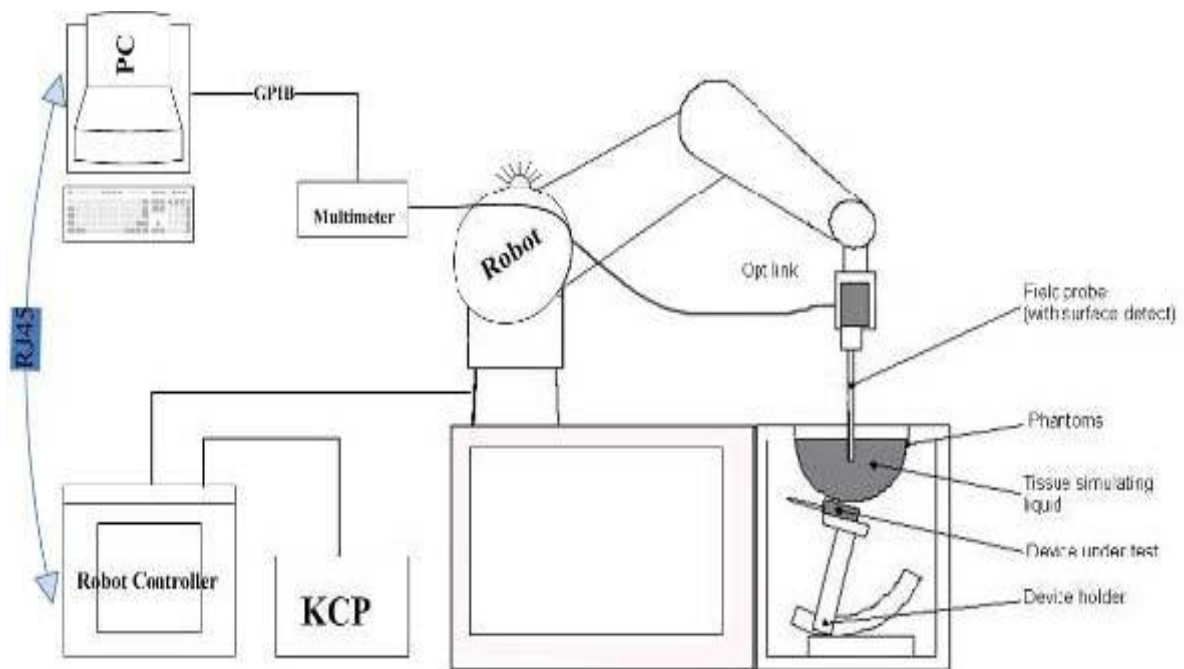
Remote control with teaches pendant and additional circuitry for robot safety such as warning lamps, etc.

The SAM phantom enabling testing left-hand right-hand and body usage.

## The Position device for handheld EUT

Tissue simulating liquid mixed according to the given recipes .

System validation dipoles to validate the proper functioning of the system.





### 3.2. OPENSAR E-field Probe System

The SAR measurements were conducted with the dosimetric probe EPG0324 (manufactured by MVG), designed in the classical triangular configuration and optimized for dosimetric evaluation.

#### Probe Specification

Construction Symmetrical design with triangular core

Interleaved sensors

Built-in shielding against static charges

PEEK enclosure material (resistant to organic solvents, e.g., DGBE)

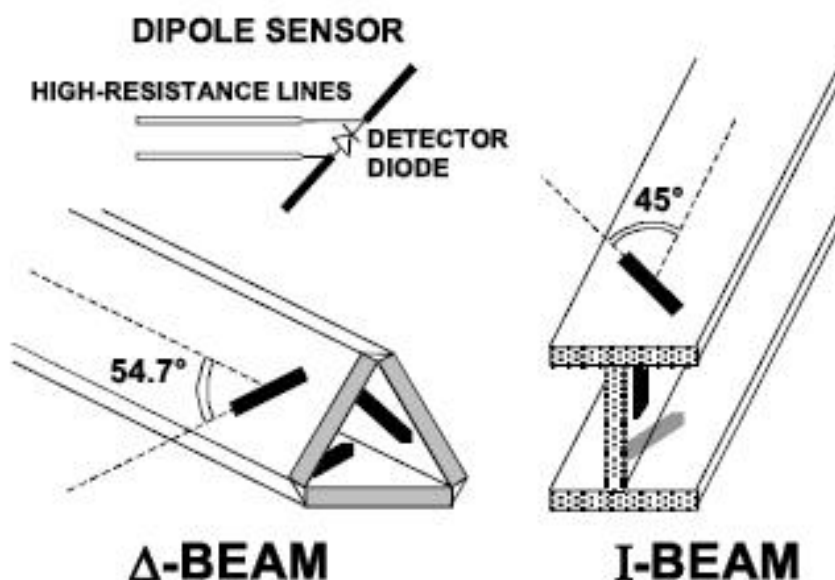
Calibration ISO/IEC 17025 calibration service available.

Frequency	450 MHz to 6 GHz; Linearity: 0.25dB(450 MHz to 6 GHz)
Directivity	0.25 dB in HSL (rotation around probe axis) 0.5 dB in tissue material (rotation normal to probe axis)
Dynamic Range	0.01W/kg to > 100 W/kg; Linearity: 0.25 dB
Dimensions	Overall length: 330 mm (Tip: 16mm) Tip diameter: 5 mm (Body: 8 mm) Distance from probe tip to sensor centers: 2.5 mm
Application	General dosimetry up to 6 GHz Dosimetry in strong gradient fields Compliance tests of Mobile Phones

#### Isotropic E-Field Probe

The isotropic E-Field probe has been fully calibrated and assessed for isotropicity, and boundary effect within a controlled environment. Depending on the frequency for which the probe is calibrated the method utilized for calibration will change.

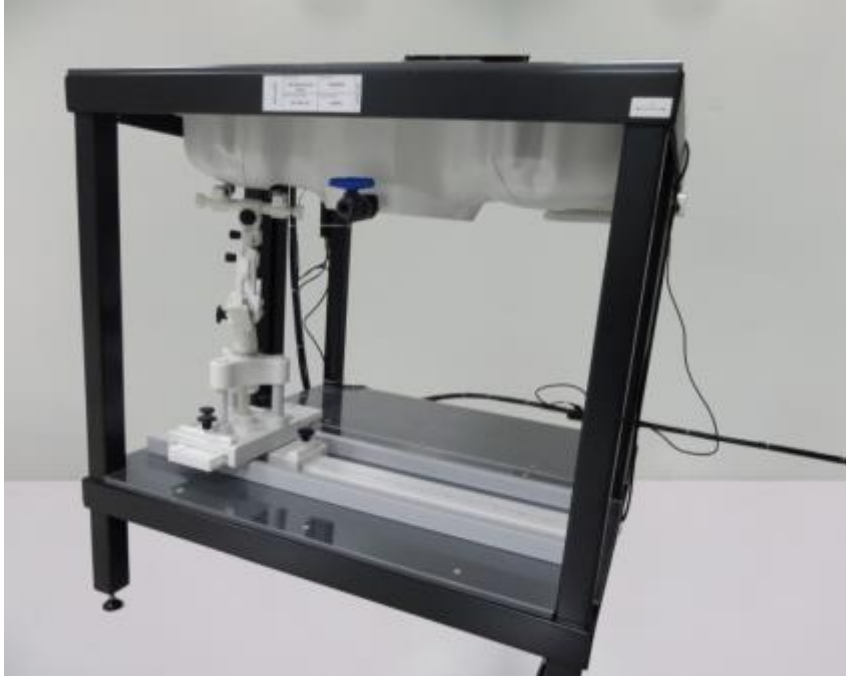
The E-Field probe utilizes a triangular sensor arrangement as detailed in the diagram below:



### 3.3. Phantoms

The SAM Phantom SAM117 is constructed of a fiberglass shell integrated in a wooden table. The shape of the shell is in compliance with the specification set in IEEE 1528 and EN62209-1, EN62209-2. The phantom enables the dosimetric evaluation of left and right hand phone usage as well as body mounted usage at the flat phantom region. A cover prevents the evaporation of the liquid. Reference markings on the Phantom allow the complete setup of all predefined phantom positions and measurement grids by manually teaching three points in the robot.

System checking was performed using the flat section, whilst Head SAR tests used the left and right head profile sections. Body SAR testing also used the flat section between the head profiles.



SAM Twin Phantom

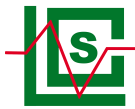
### 3.4. Device Holder

In combination with the Generic Twin Phantom SAM117, the Mounting Device enables the rotation of the mounted transmitter in spherical coordinates whereby the rotation points is the ear opening. The devices can be easily, accurately, and repeatedly positioned according to the FCC specifications. The device holder can be locked at different phantom locations (left head, right head, flat phantom).



Device holder supplied by SATIMO





### 3.5. Scanning Procedure

The procedure for assessing the peak spatial-average SAR value consists of the following steps

#### Power Reference Measurement

The reference and drift jobs are useful jobs for monitoring the power drift of the device under test in the batch process. Both jobs measure the field at a specified reference position, at a selectable distance from the phantom surface. The reference position can be either the selected section's grid reference point or a user point in this section. The reference job projects the selected point onto the phantom surface, orients the probe perpendicularly to the surface, and approaches the surface using the selected detection method.

#### Area Scan

The Area Scan is used as a fast scan in two dimensions to find the area of high field values before running a detailed measurement around the hot spot. Before starting the area scan a grid spacing of 15 mm x 15 mm is set. During the scan the distance of the probe to the phantom remains unchanged. After finishing area scan, the field maxima within a range of 2 dB will be ascertained.

	$\leq 3$ GHz	$> 3$ GHz
Maximum distance from closest measurement point (geometric center of probe sensors) to phantom surface	5 mm $\pm$ 1 mm	$\frac{1}{2} \cdot \delta \cdot \ln(2)$ mm $\pm$ 0.5 mm
Maximum probe angle from probe axis to phantom surface normal at the measurement location	30° $\pm$ 1°	20° $\pm$ 1°
Maximum area scan spatial resolution: $\Delta x_{Area}$ , $\Delta y_{Area}$	$\leq 2$ GHz: $\leq 15$ mm 2 – 3 GHz: $\leq 12$ mm	3 – 4 GHz: $\leq 12$ mm 4 – 6 GHz: $\leq 10$ mm
	When the x or y dimension of the test device, in the measurement plane orientation, is smaller than the above, the measurement resolution must be $\leq$ the corresponding x or y dimension of the test device with at least one measurement point on the test device.	

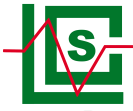
#### Zoom Scan

Zoom Scans are used to estimate the peak spatial SAR values within a cubic averaging volume containing 1 g and 10 g of simulated tissue. The default Zoom Scan is done by 7x7x7 points within a cube whose base is centered around the maxima found in the preceding area scan.

Maximum zoom scan spatial resolution: $\Delta x_{Zoom}$ , $\Delta y_{Zoom}$			$\leq 2$ GHz: $\leq 8$ mm 2 – 3 GHz: $\leq 5$ mm*	3 – 4 GHz: $\leq 5$ mm* 4 – 6 GHz: $\leq 4$ mm*
Maximum zoom scan spatial resolution, normal to phantom surface	uniform grid: $\Delta z_{Zoom}(n)$		$\leq 5$ mm	3 – 4 GHz: $\leq 4$ mm 4 – 5 GHz: $\leq 3$ mm 5 – 6 GHz: $\leq 2$ mm
	graded grid	$\Delta z_{Zoom}(1)$ : between 1 <sup>st</sup> two points closest to phantom surface	$\leq 4$ mm	3 – 4 GHz: $\leq 3$ mm 4 – 5 GHz: $\leq 2.5$ mm 5 – 6 GHz: $\leq 2$ mm
		$\Delta z_{Zoom}(n>1)$ : between subsequent points	$\leq 1.5 \cdot \Delta z_{Zoom}(n-1)$ mm	
Minimum zoom scan volume	x, y, z		$\geq 30$ mm	3 – 4 GHz: $\geq 28$ mm 4 – 5 GHz: $\geq 25$ mm 5 – 6 GHz: $\geq 22$ mm

Note:  $\delta$  is the penetration depth of a plane-wave at normal incidence to the tissue medium; see IEEE Std 1528-2013 for details.

\* When zoom scan is required and the *reported* SAR from the *area scan based 1-g SAR estimation* procedures of KDB Publication 447498 is  $\leq 1.4$  W/kg,  $\leq 8$  mm,  $\leq 7$  mm and  $\leq 5$  mm zoom scan resolution may be applied, respectively, for 2 GHz to 3 GHz, 3 GHz to 4 GHz and 4 GHz to 6 GHz.



#### Power Drift measurement

The drift job measures the field at the same location as the most recent reference job within the same procedure, and with the same settings. The drift measurement gives the field difference in dB from the reading conducted within the last reference measurement. Several drift measurements are possible for one reference measurement. This allows a user to monitor the power drift of the device under test within a batch process. In the properties of the Drift job, the user can specify a limit for the drift and have OPENSAR software stop the measurements if this limit is exceeded.

### 3.6. Data Storage and Evaluation

#### Data Storage

The OPENSAR software stores the acquired data from the data acquisition electronics as raw data (in microvolt readings from the probe sensors), together with all necessary software parameters for the data evaluation (probe calibration data, liquid parameters and device frequency and modulation data) in measurement files. The software evaluates the desired unit and format for output each time the data is visualized or exported. This allows verification of the complete software setup even after the measurement and allows correction of incorrect parameter settings. For example, if a measurement has been performed with a wrong crest factor parameter in the device setup, the parameter can be corrected afterwards and the data can be re-evaluated.

The measured data can be visualized or exported in different units or formats, depending on the selected probe type ([V/m], [A/m], [°C], [mW/g], [mW/cm²], [dBrel], etc.). Some of these units are not available in certain situations or show meaningless results, e.g., a SAR output in a lossless media will always be zero. Raw data can also be exported to perform the evaluation with other software packages.

#### Data Evaluation

The OPENSAR software automatically executes the following procedures to calculate the field units from the microvolt readings at the probe connector. The parameters used in the evaluation are stored in the configuration modules of the software:

Probe parameters:	- Sensitivity	Normi, ai0, ai1, ai2
	- Conversion factor	ConvFi
	- Diode compression point	Dcpi
Device parameters:	- Frequency	f
	- Crest factor	cf
Media parameters:	- Conductivity	σ
	- Density	ρ

These parameters must be set correctly in the software. They can be found in the component documents or they can be imported into the software from the configuration files issued for the OPENSAR components. In the direct measuring mode of the multimeter option, the parameters of the actual system setup are used. In the scan visualization and export modes, the parameters stored in the corresponding document files are used.

The first step of the evaluation is a linearization of the filtered input signal to account for the compression characteristics of the detector diode. The compensation depends on the input signal, the diode type and the DC-transmission factor from the diode to the evaluation electronics. If the exciting field is pulsed, the crest factor of the signal must be known to correctly compensate for peak power. The formula for each channel can be given as:

$$V_i = U_i + U_i^2 \cdot \frac{cf}{dcp_i}$$

With  $V_i$  = compensated signal of channel  $i$  ( $i = x, y, z$ )  
 $U_i$  = input signal of channel  $i$  ( $i = x, y, z$ )  
 $cf$  = crest factor of exciting field  
 $dcp_i$  = diode compression point

From the compensated input signals the primary field data for each channel can be evaluated:





$$\text{E - field probes : } E_i = \sqrt{\frac{V_i}{\text{Norm}_i \cdot \text{ConvF}}}$$

$$\text{H - field probes : } H_i = \sqrt{V_i} \cdot \frac{a_{i0} + a_{i1}f + a_{i2}f^2}{f}$$

With  $V_i$  = compensated signal of channel i (i = x, y, z)  
 $\text{Norm}_i$  = sensor sensitivity of channel i (i = x, y, z)  
[mV/(V/m)<sup>2</sup>] for E-field Probes  
 $\text{ConvF}$  = sensitivity enhancement in solution  
 $a_{ij}$  = sensor sensitivity factors for H-field probes  
 $f$  = carrier frequency [GHz]  
 $E_i$  = electric field strength of channel i in V/m  
 $H_i$  = magnetic field strength of channel i in A/m

The RSS value of the field components gives the total field strength (Hermitian magnitude):

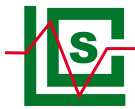
$$E_{tot} = \sqrt{E_x^2 + E_y^2 + E_z^2}$$

The primary field data are used to calculate the derived field units.

$$SAR = E_{tot}^2 \cdot \frac{\sigma}{\rho \cdot 1'000}$$

with  $SAR$  = local specific absorption rate in mW/g  
 $E_{tot}$  = total field strength in V/m  
 $\sigma$  = conductivity in [mho/m] or [Siemens/m]  
 $\rho$  = equivalent tissue density in g/cm<sup>3</sup>

Note that the density is normally set to 1 (or 1.06), to account for actual brain density rather than the density of the simulation liquid.



### 3.7. Tissue Dielectric Parameters for Head and Body Phantoms

The liquid is consisted of water,salt,Glycol,Sugar,Preventol and Cellulose.The liquid has previously been proven to be suited for worst-case.It's satisfying the latest tissue dielectric parameters requirements proposed by the KDB865664.

The composition of the tissue simulating liquid

Frequency (MHz)	Bactericide	DGBE	HEC	NaCl	Sucrose	1,2-Propanediol	X100	Water	Conductivity	Permittivity
	%	%	%	%	%	%	%	%	$\sigma$	$\epsilon_r$
750	/	/	/	0.79	/	64.81	/	34.40	0.97	41.8
835	/	/	/	0.79	/	64.81	/	34.40	0.97	41.8
900	/	/	/	0.79	/	64.81	/	34.40	0.97	41.8
1800	/	13.84	/	0.35	/	/	30.45	55.36	1.38	41.0
1900	/	13.84	/	0.35	/	/	30.45	55.36	1.38	41.0
2000	/	7.99	/	0.16	/	/	19.97	71.88	1.55	41.1
2450	/	7.99	/	0.16	/	/	19.97	71.88	1.88	40.3
2600	/	7.99	/	0.16	/	/	19.97	71.88	1.88	40.3

Target Frequency (MHz)	Head		Body	
	$\epsilon_r$	$\sigma$ (S/m)	$\epsilon_r$	$\sigma$ (S/m)
150	52.3	0.76	61.9	0.80
300	45.3	0.87	58.2	0.92
450	43.5	0.87	56.7	0.94
835	41.5	0.90	55.2	0.97
900	41.5	0.97	55.0	1.05
915	41.5	0.98	55.0	1.06
1450	40.5	1.20	54.0	1.30
1610	40.3	1.29	53.8	1.40
1800-2000	40.0	1.40	53.3	1.52
2450	39.2	1.80	52.7	1.95
2600	39.0	1.96	52.5	2.16
3000	38.5	2.40	52.0	2.73
5800	35.3	5.27	48.2	6.00

### 3.8. Tissue equivalent liquid properties

Dielectric Performance of Head and Body Tissue Simulating Liquid

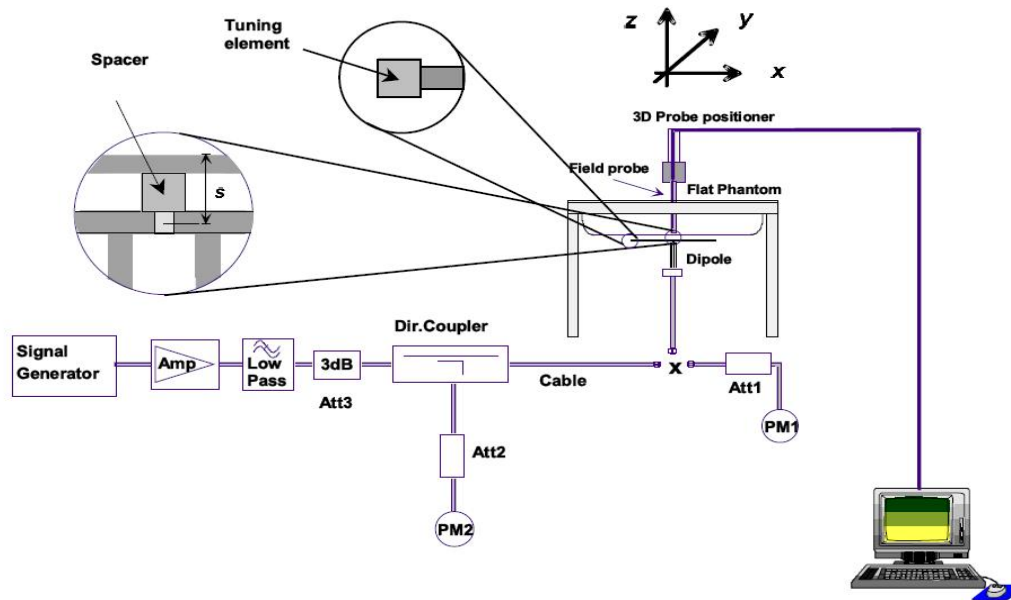
Test Engineer: Jerry hu									
Tissue Type	Measured Frequency (MHz)	Target Tissue		Measured Tissue				Liquid Temp.	Test Data
		$\sigma$	$\epsilon_r$	$\sigma$	Dev.	$\epsilon_r$	Dev.		
835H	835	0.90	41.50	0.92	2.22%	42.82	1.81%	20.2	06/20/2022
1800H	1800	1.52	53.30	1.56	-1.32%	52.11	-2.23%	22.4	06/22/2022
1900H	1900	1.40	40.00	1.37	-2.14%	38.56	-3.60%	21.3	06/24/2022
2450H	2450	1.80	39.20	1.84	2.22%	39.70	1.28%	22.1	06/27/2022
2600H	2600	1.96	39.00	1.92	-2.04%	38.43	-1.46%	22.2	06/30/2022
5200H	5200	5.30	49.00	4.66	-0.94%	48.80	-0.41%	23.3	07/04/2022
5800H	5800	6.00	48.20	5.27	0.83%	48.46	0.54%	22.2	07/06/2022



### 3.9. System Check

The purpose of the system check is to verify that the system operates within its specifications at the device test frequency. The system check is simple check of repeatability to make sure that the system works correctly at the time of the compliance test;

System check results have to be equal or near the values determined during dipole calibration with the relevant liquids and test system ( $\pm 10\%$ ).



The output power on dipole port must be calibrated to 20 dBm (100mW) before dipole is connected.



Photo of Dipole Setup

**Justification for Extended SAR Dipole Calibrations**

Referring to KDB 865664D01V01r04, if dipoles are verified in return loss ( $<-20\text{dB}$ , within 20% of prior calibration), and in impedance (within 5 ohm of prior calibration), the annual calibration is not necessary and the calibration interval can be extended. While calibration intervals not exceed 3 years.

**SID835 SN 07/14 DIP 0G835-303 Extend Dipole Calibrations**

Date of Measurement	Return-Loss (dB)	Delta (%)	Real Impedance (ohm)	Delta (ohm)	Imaginary Impedance (ohm)	Delta (ohm)
2021-09-29	-24.49		54.9		2.8	

**SID1800 SN 30/14 DIP 1G800-301 Extend Dipole Calibrations**

Date of Measurement	Return-Loss (dB)	Delta (%)	Real Impedance (ohm)	Delta (ohm)	Imaginary Impedance (ohm)	Delta (ohm)
2021-09-29	-20.26		43.1		6.9	

**SID1900 SN 38/18 DIP 1G900-466 Extend Dipole Calibrations**

Date of Measurement	Return-Loss (dB)	Delta (%)	Real Impedance (ohm)	Delta (ohm)	Imaginary Impedance (ohm)	Delta (ohm)
2021-09-29	-26.43		50.5		4.7	

**SID2450 SN 07/14 DIP 2G450-306 Extend Dipole Calibrations**

Date of Measurement	Return-Loss (dB)	Delta (%)	Real Impedance (ohm)	Delta (ohm)	Imaginary Impedance (ohm)	Delta (ohm)
2021-09-29	-25.59		44.7		-1.1	

**SID2600 SN 38/18 DIP 2G600-468 Extend Dipole Calibrations**

Date of Measurement	Return-Loss (dB)	Delta (%)	Real Impedance (ohm)	Delta (ohm)	Imaginary Impedance (ohm)	Delta (ohm)
2021-09-29	-29.14		49.2		3.4	

**SID5200 SN 49/16 DIP WGA43 Extend Dipole Calibrations**

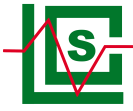
Date of Measurement	Return-Loss (dB)	Delta (%)	Real Impedance (ohm)	Delta (ohm)	Imaginary Impedance (ohm)	Delta (ohm)
2021-09-29	-8.59		19.38		13.50	

**SID5800 SN 49/16 DIP WGA43 Extend Dipole Calibrations**

Date of Measurement	Return-Loss (dB)	Delta (%)	Real Impedance (ohm)	Delta (ohm)	Imaginary Impedance (ohm)	Delta (ohm)
2021-09-29	-11.37		54.79		25.47	



Mixture Type	Frequency (MHz)	Power	SAR <sub>1g</sub> (W/Kg)	SAR <sub>10g</sub> (W/Kg)	Drift (%)	1W Target		Difference percentage		Liquid Temp	Date
						SAR <sub>1g</sub> (W/Kg)	SAR <sub>10g</sub> (W/Kg)	1g	10g		
Head	835	100 mW	0.923	0.639	2.03	9.60	6.20	-3.85%	3.06%	20.2	06/20/2022
		Normalize to 1 Watt	9.23	6.39							
Head	1800	100 mW	3.853	2.055	1.62	38.13	20.20	1.05%	1.73%	22.4	06/22/2022
		Normalize to 1 Watt	38.53	20.55							
Head	1900	100 mW	3.911	2.096	-1.20	40.03	20.55	-2.30%	2.00%	21.3	06/24/2022
		Normalize to 1 Watt	39.11	20.96							
Head	2450	100 mW	5.487	2.521	-0.08	53.89	24.15	1.82%	4.39%	22.1	06/27/2022
		Normalize to 1 Watt	54.87	25.21							
Head	2600	100 mW	5.747	2.246	3.14	56.91	24.69	0.98%	-9.03%	22.2	06/30/2022
		Normalize to 1 Watt	57.47	22.46							
Head	5200	100 mW	15.467	5.512	-3.02	165.77	57.2	-6.70%	-3.64%	23.3	07/04/2022
		Normalize to 1 Watt	154.67	55.12							
Head	5800	100 mW	18.293	6.177	-1.01	186.77	62.84	-2.06%	-1.70%	22.2	07/06/2022
		Normalize to 1 Watt	182.93	61.77							



### 3.10. SAR measurement procedure

The measurement procedures are as follows:

#### 3.10.1 Conducted power measurement

- For WWAN power measurement, use base station simulator connection with RF cable, at maximum power in each supported wireless interface and frequency band.
- Read the WWAN RF power level from the base station simulator.
- For WLAN/BT power measurement, use engineering software to configure EUT WLAN/BT continuously Transmission, at maximum RF power in each supported wireless interface and frequency band.
- Connect EUT RF port through RF cable to the power meter, and measure WLAN/BT output power.

#### 3.10.2 GSM Test Configuration

SAR tests for GSM 850 and GSM 1900, a communication link is set up with a System Simulator (SS) by air link. Using CMU200 the power level is set to "5" for GSM 850, set to "0" for GSM 1900. Since the GPRS class is 12 for this EUT, it has at most 4 timeslots in uplink and at most 4 timeslots in downlink, the maximum total timeslots is 5. the EGPRS class is 12 for this EUT, it has at most 4 timeslots in uplink and at most 4 timeslots in downlink, the maximum total timeslots is 5.

SAR test reduction for GPRS and EDGE modes is determined by the source-based time-averaged output power specified for production units, including tune-up tolerance. The data mode with highest specified time-averaged output power should be tested for SAR compliance in the applicable exposure conditions. For modes with the same specified maximum output power and tolerance, the higher number time-slot configuration should be tested. GSM voice and GPRS data use GMSK, which is a constant amplitude modulation with minimal peak to average power difference within the time-slot burst. For EDGE, GMSK is used for MCS 1 – MCS 4 and 8-PSK is used for MCS 5 – MCS 9; where 8-PSK has an inherently higher peak-to-average power ratio. The GMSK and 8-PSK EDGE configurations are considered separately for SAR compliance. The GMSK EDGE configurations are grouped with GPRS and considered with respect to time-averaged maximum output power to determine compliance. The 3G SAR test reduction procedure is applied to 8-PSK EDGE with GMSK GPRS/EDGE as the primary mode.

#### 3.10.3 UMTS Test Configuration

##### 3G SAR Test Reduction Procedure

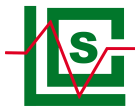
In the following procedures, the mode tested for SAR is referred to as the primary mode. The equivalent modes considered for SAR test reduction are denoted as secondary modes. Both primary and secondary modes must be in the same frequency band. When the maximum output power and tune-up tolerance specified for production units in a secondary mode is  $\leq \frac{1}{4}$  dB higher than the primary mode or when the highest reported SAR of the primary mode is scaled by the ratio of specified maximum output power and tune-up tolerance of secondary to primary mode and the adjusted SAR is  $\leq 1.2$  W/kg, SAR measurement is not required for the secondary mode.<sup>3</sup> This is referred to as the 3G SAR test reduction procedure in the following SAR test guidance, where the primary mode is identified in the applicable wireless mode test procedures and the secondary mode is wireless mode being considered for SAR test reduction by that procedure. When the 3G SAR test reduction procedure is not satisfied, it is identified as "otherwise" in the applicable procedures; SAR measurement is required for the secondary mode.

#### Output power Verification

Maximum output power is verified on the high, middle and low channels according to procedures described in section 5.2 of 3GPP TS 34.121, using the appropriate RMC or AMR with TPC (transmit power control) set to all "1's" for WCDMA/HSDPA or by applying the required inner loop power control procedures to maintain maximum output power while HSUPA is active. Results for all applicable physical channel configurations (DPCCH, DPDCHn and spreading codes, HSDPA, HSPA) are required in the SAR report. All configurations that are not supported by the handset or cannot be measured due to technical or equipment limitations must be clearly identified.

#### Head SAR

SAR for next to the ear head exposure is measured using a 12.2 kbps RMC with TPC bits configured to all "1's". The 3G SAR test reduction procedure is applied to AMR configurations with 12.2 kbps RMC as the primary mode. Otherwise, SAR is measured for 12.2 kbps AMR in 3.4 kbps SRB (signaling radio bearer) using the highest reported SAR configuration in 12.2 kbps RMC for head exposure.

1) Body-Worn Accessory SAR

SAR for body-worn accessory configurations is measured using a 12.2 kbps RMC with TPC bits configured to all "1's". The 3G SAR test reduction procedure is applied to other spreading codes and multiple DPDCHn configurations supported by the handset with 12.2 kbps RMC as the primary mode. Otherwise, SAR is measured using an applicable RMC configuration with the corresponding spreading code or DPDCHn, for the highest reported body-worn accessory exposure SAR configuration in 12.2 kbps RMC. When more than 2 DPDCHn are supported by the handset, it may be necessary to configure additional DPDCHn using FTM (Factory Test Mode) or other chipset based test approaches with parameters similar to those used in 384 kbps and 768 kbps RMC.

2) Handsets with Release 5 HSDPA

The 3G SAR test reduction procedure is applied to HSDPA body-worn accessory configurations with 12.2 kbps RMC as the primary mode. Otherwise, SAR is measured for HSDPA using the HSDPA body SAR procedures in the "Release 5 HSDPA Data Devices" section of this document, for the highest reported SAR body-worn accessory exposure configuration in 12.2 kbps RMC. Handsets with both HSDPA and HSUPA are tested according to Release 6 HSPA test procedures.

HSDPA should be configured according to the UE category of a test device. The number of HSDSCH/ HS-PDSCHs, HARQ processes, minimum inter-TTI interval, transport block sizes and RV coding sequence are defined by the H-set. To maintain a consistent test configuration and stable transmission conditions, QPSK is used in the H-set for SAR testing. HS-DPCCH should be configured with a CQI feedback cycle of 4 ms with a CQI repetition factor of 2 to maintain a constant rate of active CQI slots. DPCCH and DPDCH gain factors ( $\beta_c$ ,  $\beta_d$ ), and HS-DPCCH power offset parameters ( $\Delta_{ACK}$ ,  $\Delta_{NACK}$ ,  $\Delta_{CQI}$ ) should be set according to values indicated in the Table below. The CQI value is determined by the UE category, transport block size, number of HS-PDSCHs and modulation used in the H-set

**Table 2: Subtests for UMTS Release 5 HSDPA**

Sub-set	$\beta_c$	$\beta_d$	$\beta_d$ (SF)	$\beta_c/\beta_d$	$\beta_{hs}$ (note 1, note 2)	CM(dB) (note 3)	MPR(dB)
1	2/15	15/15	64	2/15	4/15	0.0	0.0
2	12/15 (note 4)	15/15 (note 4)	64	12/15 (note 4)	24/15	1.0	0.0
3	15/15	8/15	64	15/8	30/15	1.5	0.5
4	15/15	4/15	64	15/4	30/15	1.5	0.5

Note1:  $\Delta_{ACK}$ ,  $\Delta_{NACK}$  and  $\Delta_{CQI} = 8$   $\rightarrow A_{hs} = \beta_{hs}/\beta_c = 30/15 \rightarrow \beta_{hs} = 30/15 * \beta_c$

Note2: CM=1 for  $\beta_c/\beta_d = 12/15$ ,  $\beta_{hs}/\beta_c = 24/15$ .

Note3: For subtest 2 the  $\beta_c/\beta_d$  ratio of 12/15 for the TFC during the measurement period (TF1, TF0) is achieved by setting the signaled gain factors for the reference TFC (TFC1, TF1) to  $\beta_c = 11/15$  and  $\beta_d = 15/15$ .

**HSUPA Test Configuration**

The 3G SAR test reduction procedure is applied to HSPA (HSUPA/HSDPA with RMC) body-worn accessory configurations with 12.2 kbps RMC as the primary mode. Otherwise, SAR is measured for HSPA using the HSPA body SAR procedures in the "Release 6 HSPA Data Devices" section of this document, for the highest reported body-worn accessory exposure SAR configuration in 12.2 kbps RMC. When VOIP is applicable for next to the ear head exposure in HSPA, the 3G SAR test reduction procedure is applied to HSPA with 12.2 kbps RMC as the primary mode; otherwise, the same HSPA configuration used for body-worn accessory measurements is tested for next to the ear head exposure.

Due to inner loop power control requirements in HSPA, a communication test set is required for output power and SAR tests. The 12.2 kbps RMC, FRC H-set 1 and E-DCH configurations for HSPA are configured according to the  $\beta$  values indicated in Table 2 and other applicable procedures described in the 'WCDMA Handset' and 'Release 5 HSDPA Data Devices' sections of this document

**Table 3: Sub-Test 5 Setup for Release 6 HSUPA**

Sub-set	$\beta_c$	$\beta_d$	$\beta_d$ (SF)	$\beta_c/\beta_d$	$\beta_{hs}^{(1)}$	$\beta_{ec}$	$\beta_{ed}$	$\beta_{ed}$ (SF)	$\beta_{ed}$ (codes)	CM <sup>(2)</sup> (dB)	MPR (dB)	AG <sup>(4)</sup> Index	E- TFCI
1	11/15 <sup>(3)</sup>	15/15 <sup>(3)</sup>	64	11/15 <sup>(3)</sup>	22/15	209/225	1039/225	4	1	1.0	0.0	20	75
2	6/15	15/15	64	6/15	12/15	12/15	94/75	4	1	3.0	2.0	12	67
3	15/15	9/15	64	15/9	30/15	30/15	$\beta_{ed1}$ : 47/15 $\beta_{ed2}$ : 47/15	4	2	2.0	1.0	15	92
4	2/15	15/15	64	2/15	4/15	2/15	56/75	4	1	3.0	2.0	17	71





5	15/15 <sup>(4)</sup>	15/15 <sup>(4)</sup>	64	15/15 <sup>(4)</sup>	30/15	24/15	134/15	4	1	1.0	0.0	21	81
<p>Note 1: <math>\Delta_{ACK}</math>, <math>\Delta_{NACK}</math> and <math>\Delta_{CQI} = 8 \Leftrightarrow A_{hs} = \beta_{hs}/\beta_c = 30/15 \Leftrightarrow \beta_{hs} = 30/15 * \beta_c</math>.</p> <p>Note 2: CM = 1 for <math>\beta_c/\beta_d = 12/15</math>, <math>\beta_{hs}/\beta_c = 24/15</math>. For all other combinations of DPDCH, DPCCH, HS- DPCCH, E-DPDCH and E-DPCCH the MPR is based on the relative CM difference.</p> <p>Note 3: For subtest 1 the <math>\beta_c/\beta_d</math> ratio of 11/15 for the TFC during the measurement period (TF1, TF0) is achieved by setting the signaled gain factors for the reference TFC (TF1, TF1) to <math>\beta_c = 10/15</math> and <math>\beta_d = 15/15</math>.</p> <p>Note 4: For subtest 5 the <math>\beta_c/\beta_d</math> ratio of 15/15 for the TFC during the measurement period (TF1, TF0) is achieved by setting the signaled gain factors for the reference TFC (TF1, TF1) to <math>\beta_c = 14/15</math> and <math>\beta_d = 15/15</math>.</p> <p>Note 5: Testing UE using E-DPDCH Physical Layer category 1 Sub-test 3 is not required according to TS 25.306 Figure 5.1g.</p> <p>Note 6: <math>\beta_d</math> can not be set directly; it is set by Absolute Grant Value.</p>													

### 3.10.4 WIFI Test Configuration

The SAR measurement and test reduction procedures are structured according to either the DSSS or OFDM transmission mode configurations used in each standalone frequency band and aggregated band. For devices that operate in exposure configurations that require multiple test positions, additional SAR test reduction may be applied. The maximum output power specified for production units, including tune-up tolerance, are used to determine initial SAR test requirements for the 802.11 transmission modes in a frequency band. SAR is measured using the highest measured maximum output power channel for the initial test configuration. SAR measurement and test reduction for the remaining 802.11 modes and test channels are determined according to measured or specified maximum output power and reported SAR of the initial measurements. The general test reduction and SAR measurement approaches are summarized in the following:

1. The maximum output power specified for production units are determined for all applicable 802.11 transmission modes in each standalone and aggregated frequency band. Maximum output power is measured for the highest maximum output power configuration(s) in each frequency band according to the default power measurement procedures.
2. For OFDM transmission configurations in the 2.4 GHz and 5 GHz bands, an "initial test configuration" is first determined for each standalone and aggregated frequency band according to the maximum output power and tune-up tolerance specified for production units.
  - a. When the same maximum power is specified for multiple transmission modes in a frequency band, the largest channel bandwidth, lowest order modulation, lowest data rate and lowest order 802.11a/g/n/ac mode is used for SAR measurement, on the highest measured output power channel in the initial test configuration, for each frequency band.
  - b. SAR is measured for OFDM configurations using the initial test configuration procedures. Additional frequency band specific SAR test reduction may be considered for individual frequency bands
  - c. Depending on the reported SAR of the highest maximum output power channel tested in the initial test configuration, SAR test reduction may apply to subsequent highest output channels in the initial test configuration to reduce the number of SAR measurements.
3. The Initial test configuration does not apply to DSSS. The 2.4 GHz band SAR test requirements and 802.11b DSSS procedures are used to establish the transmission configurations required for SAR measurement.
4. An "initial test position" is applied to further reduce the number of SAR tests for devices operating in next to the ear, UMPC mini-tablet or hotspot mode exposure configurations that require multiple test positions.
  - a. SAR is measured for 802.11b according to the 2.4 GHz DSSS procedure using the exposure condition established by the initial test position.
  - b. SAR is measured for 2.4 GHz and 5 GHz OFDM configurations using the initial test configuration. 802.11b/g/n operating modes are tested independently according to the service requirements in each frequency band. 802.11b/g/n modes are tested on the maximum average output channel.
5. The Initial test position does not apply to devices that require a fixed exposure test position. SAR is measured in a fixed exposure test position for these devices in 802.11b according to the 2.4 GHz DSSS procedure or in 2.4 GHz and 5 GHz OFDM configurations using the initial test configuration procedures.
6. The "subsequent test configuration" procedures are applied to determine if additional SAR measurements are required for the remaining OFDM transmission modes that have not been tested in the initial test configuration. SAR test exclusion is determined according to reported SAR in the initial test configuration and maximum output power specified or measured for these other OFDM configurations.

### 2.4 GHz and 5GHz SAR Procedures





Separate SAR procedures are applied to DSSS and OFDM configurations in the 2.4 GHz band to simplify DSSS test requirements. For 802.11b DSSS SAR measurements, DSSS SAR procedure applies to fixed exposure test position and initial test position procedure applies to multiple exposure test positions. When SAR measurement is required for an OFDM configuration, the initial test configuration, subsequent test configuration and initial test position procedures are applied. The SAR test exclusion requirements for 802.11g/n OFDM configurations are described in section 5.2.2.

#### 1. 802.11b DSSS SAR Test Requirements

SAR is measured for 2.4 GHz 802.11b DSSS using either a fixed test position or, when applicable, the initial test position procedure. SAR test reduction is determined according to the following:

- a. When the reported SAR of the highest measured maximum output power channel (section 3.1) for the exposure configuration is  $\leq 0.8$  W/kg, no further SAR testing is required for 802.11b DSSS in that exposure configuration.
- b. When the reported SAR is  $> 0.8$  W/kg, SAR is required for that exposure configuration using the next highest measured output power channel. When any reported SAR is  $> 1.2$  W/kg, SAR is required for the third channel; i.e., all channels require testing.

#### 1. 2.4 GHz 802.11g/n OFDM SAR Test Exclusion Requirements

When SAR measurement is required for 2.4 GHz 802.11g/n OFDM configurations, the measurement and test reduction procedures for OFDM are applied (section 5.3). SAR is not required for the following 2.4 GHz OFDM conditions.

- a. When KDB Publication 447498 SAR test exclusion applies to the OFDM configuration
- b. When the highest reported SAR for DSSS is adjusted by the ratio of OFDM to DSSS specified maximum output power and the adjusted SAR is  $\leq 1.2$  W/kg.

#### 2. SAR Test Requirements for OFDM Configurations

When SAR measurement is required for 802.11 a/g/n/ac OFDM configurations, each standalone and frequency aggregated band is considered separately for SAR test reduction. When the same transmitter and antenna(s) are used for U-NII-1 and U-NII-2A bands, additional SAR test reduction applies. When band gap channels between U-NII-2C band and 5.8 GHz U-NII-3 or §15.247 band are supported, the highest maximum output power transmission mode configuration and maximum output power channel across the bands must be used to determine SAR test reduction, according to the initial test configuration and subsequent test configuration requirements.<sup>20</sup> In applying the initial test configuration and subsequent test configuration procedures, the 802.11 transmission configuration with the highest specified maximum output power and the channel within a test configuration with the highest measured maximum output power should be clearly distinguished to apply the procedures.

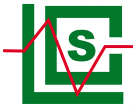
#### 3. OFDM Transmission Mode SAR Test Configuration and Channel Selection Requirements

The initial test configuration for 2.4 GHz and 5 GHz OFDM transmission modes is determined by the 802.11 configuration with the highest maximum output power specified for production units, including tune-up tolerance, in each standalone and aggregated frequency band. SAR for the initial test configuration is measured using the highest maximum output power channel determined by the default power measurement procedures (section 4). When multiple configurations in a frequency band have the same specified maximum output power, the initial test configuration is determined according to the following steps applied sequentially.

- a. The largest channel bandwidth configuration is selected among the multiple configurations with the same specified maximum output power.
- b. If multiple configurations have the same specified maximum output power and largest channel bandwidth, the lowest order modulation among the largest channel bandwidth configurations is selected.
- c. If multiple configurations have the same specified maximum output power, largest channel bandwidth and lowest order modulation, the lowest data rate configuration among these configurations is selected.
- d. When multiple transmission modes (802.11a/g/n/ac) have the same specified maximum output power, largest channel bandwidth, lowest order modulation and lowest data rate, the lowest order 802.11 mode is selected; i.e., 802.11a is chosen over 802.11n then 802.11ac or 802.11g is chosen over 802.11n.

After an initial test configuration is determined, if multiple test channels have the same measured maximum output power, the channel chosen for SAR measurement is determined according to the following. These channel selection procedures apply to both the initial test configuration and subsequent test configuration(s), with respect to the default power measurement procedures or additional power measurements required for further SAR test reduction. The same procedures also apply to subsequent highest output power channel(s) selection.

- a. Channels with measured maximum output power within  $\frac{1}{4}$  dB of each other are considered to have the same maximum output.
- b. When there are multiple test channels with the same measured maximum output power, the channel closest to mid-band frequency is selected for SAR measurement.



- c. When there are multiple test channels with the same measured maximum output power and equal separation from mid-band frequency; for example, high and low channels or two mid-band channels, the higher frequency (number) channel is selected for SAR measurement.

#### Initial Test Configuration Procedures

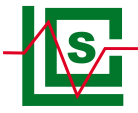
An initial test configuration is determined for OFDM transmission modes according to the channel bandwidth, modulation and data rate combination(s) with the highest maximum output power specified for production units in each standalone and aggregated frequency band. SAR is measured using the highest measured maximum output power channel. For configurations with the same specified or measured maximum output power, additional transmission mode and test channel selection procedures are required (see section 5.3.2). SAR test reduction of subsequent highest output test channels is based on the reported SAR of the initial test configuration.

For next to the ear, hotspot mode and UMC mini-tablet exposure configurations where multiple test positions are required, the initial test position procedure is applied to minimize the number of test positions required for SAR measurement using the initial test configuration transmission mode.<sup>23</sup> For fixed exposure conditions that do not have multiple SAR test positions, SAR is measured in the transmission mode determined by the initial test configuration. When the reported SAR of the initial test configuration is  $> 0.8$  W/kg, SAR measurement is required for the subsequent next highest measured output power channel(s) in the initial test configuration until the reported SAR is  $\leq 1.2$  W/kg or all required channels are tested.

#### 4. Subsequent Test Configuration Procedures

SAR measurement requirements for the remaining 802.11 transmission mode configurations that have not been tested in the initial test configuration are determined separately for each standalone and aggregated frequency band, in each exposure condition, according to the maximum output power specified for production units. The initial test position procedure is applied to next to the ear, UMPC mini-tablet and hotspot mode configurations. When the same maximum output power is specified for multiple transmission modes, the procedures in section 5.3.2 are applied to determine the test configuration. Additional power measurements may be required to determine if SAR measurements are required for subsequent highest output power channels in a subsequent test configuration. The subsequent test configuration and SAR measurement procedures are described in the following.

- a. When SAR test exclusion provisions of KDB Publication 447498 are applicable and SAR measurement is not required for the initial test configuration, SAR is also not required for the next highest maximum output power transmission mode subsequent test configuration(s) in that frequency band or aggregated band and exposure configuration.
- b. When the highest reported SAR for the initial test configuration (when applicable, include subsequent highest output channels), according to the initial test position or fixed exposure position requirements, is adjusted by the ratio of the subsequent test configuration to initial test configuration specified maximum output power and the adjusted SAR is  $\leq 1.2$  W/kg, SAR is not required for that subsequent test configuration.
- c. The number of channels in the initial test configuration and subsequent test configuration can be different due to differences in channel bandwidth. When SAR measurement is required for a subsequent test configuration and the channel bandwidth is smaller than that in the initial test configuration, all channels in the subsequent test configuration that overlap with the larger bandwidth channel tested in the initial test configuration should be used to determine the highest maximum output power channel. This step requires additional power measurement to identify the highest maximum output power channel in the subsequent test configuration to determine SAR test reduction.
  - 1). SAR should first be measured for the channel with highest measured output power in the subsequent test configuration.
  - 2). SAR for subsequent highest measured maximum output power channels in the subsequent test configuration is required only when the reported SAR of the preceding higher maximum output power channel(s) in the subsequent test configuration is  $> 1.2$  W/kg or until all required channels are tested.
    - a) For channels with the same measured maximum output power, SAR should be measured using the channel closest to the center frequency of the larger channel bandwidth channel in the initial test configuration.
- d. SAR measurements for the remaining highest specified maximum output power OFDM transmission mode configurations that have not been tested in the initial test configuration (highest maximum output) or subsequent test configuration(s) (subsequent next highest maximum output power) is determined by applying the subsequent test configuration procedures in this section to the remaining configurations according to the following:
  - 1) replace "subsequent test configuration" with "next subsequent test configuration" (i.e., subsequent next highest specified maximum output power configuration)
  - 2) replace "initial test configuration" with "all tested higher output power configurations."

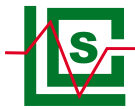


### **3.11. Power Reduction**

The product without any power reduction.

### **3.12. Power Drift**

To control the output power stability during the SAR test, SAR system calculates the power drift by measuring the E-field at the same location at the beginning and at the end of the measurement for each test position. This ensures that the power drift during one measurement is within 5%.



## 4. TEST CONDITIONS AND RESULTS

### 4.1. Conducted Power Results

According KDB 447498D01 General RF Exposure Guidance v06 Section 4.1 2) states that "Unless it is specified differently in the published RF exposure KDB procedures, these requirements also apply to test reduction and test exclusion considerations. Time-averaged maximum conducted output power applies to SAR and, as required by § 2.1091(c), time-averaged ERP applies to MPE. When an antenna port is not available on the device to support conducted power measurement, such as FRS and certain Part 15 transmitters with built-in integral antennas, the maximum output power allowed for production units should be used to determine RF exposure test exclusion and compliance."

#### <GSM Conducted Power>

General Note:

1. Per KDB 447498 D01v06, the maximum output power channel is used for SAR testing and for further SAR test reduction.
2. According to October 2013TCB Workshop, for GSM / GPRS / EGPRS, the number of time slots to test for SAR should correspond to the highest frame-average maximum output power configuration, considering the possibility of e.g. 3rd party VoIP operation for head and body-worn SAR testing, the EUT was set in GPRS (4Tx slot) for GSM850/GSM1900 band due to their highest frame-average power.
3. For hotspot mode SAR testing, GPRS should be evaluated, therefore the EUT was set in GPRS (4 Tx slots) for GSM850/GSM1900 band due to its highest frame-average power.

**Conducted power measurement results for GSM850/PCS1900**

GSM 850		Tune-up	Burst Conducted power (dBm)			Division Factors	Tune-up	Average power (dBm)		
			Channel/Frequency(MHz)					Channel/Frequency(MHz)		
		Max	128/824.2	190/836.6	251/848.8		Max	128/824.2	190/836.6	251/848.8
GSM		33.00	32.68	32.71	32.69	-9.03dB	23.97	23.65	23.68	23.66
GPRS (GMSK)	1TX slot	33.00	32.50	32.53	32.51	-9.03dB	23.97	23.47	23.50	23.48
	2TX slot	31.50	30.99	31.01	30.95	-6.02dB	25.48	24.97	24.99	24.93
	3TX slot	30.00	29.47	29.52	29.47	-4.26dB	25.74	25.21	25.26	25.21
	4TX slot	28.50	27.97	28.02	27.98	-3.01dB	25.49	24.96	25.01	24.97
EGPRS (8PSK)	1TX slot	26.00	26.00	25.97	25.97	-9.03dB	16.97	16.97	16.94	16.94
	2TX slot	24.50	24.47	24.48	24.48	-6.02dB	18.48	18.45	18.46	18.46
	3TX slot	23.00	22.96	22.98	22.99	-4.26dB	18.74	18.70	18.72	18.73
	4TX slot	22.00	21.49	21.52	21.44	-3.01dB	18.99	18.48	18.51	18.43
GSM 1900		Tune-up	Burst Conducted power (dBm)			Division Factors	Tune-up	Average power (dBm)		
			Channel/Frequency(MHz)					Channel/Frequency(MHz)		
		Max	512/1850.2	661/1880	810/1909.8		Max.	512/1850.2	661/1880	810/1909.8
GSM		30.00	29.66	29.72	29.65	-9.03dB	20.97	20.63	20.69	20.62
GPRS (GMSK)	1TX slot	30.00	29.50	29.56	29.48	-9.03dB	20.97	20.47	20.53	20.45
	2TX slot	28.50	27.98	28.02	27.96	-6.02dB	22.48	21.96	22.00	21.94
	3TX slot	26.50	26.46	26.50	26.44	-4.26dB	22.24	22.20	22.24	22.18
	4TX slot	25.00	24.95	24.99	24.95	-3.01dB	21.99	21.94	21.98	21.94
EGPRS (8PSK)	1TX slot	25.50	25.48	25.50	25.47	-9.03dB	16.47	16.45	16.47	16.44
	2TX slot	24.50	23.94	24.03	23.97	-6.02dB	18.48	17.92	18.01	17.95
	3TX slot	22.50	22.47	22.47	22.46	-4.26dB	18.24	18.21	18.21	18.20
	4TX slot	21.00	20.95	20.99	20.97	-3.01dB	17.99	17.94	17.98	17.96

#### Notes:

##### 1. Division Factors

To average the power, the division factor is as follows:

1TX-slot = 1 transmit time slot out of 8 time slots=> conducted power divided by (8/1) => -9.00dB

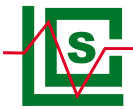
2TX-slots = 2 transmit time slots out of 8 time slots=> conducted power divided by (8/2) => -6.00dB

3TX-slots = 3 transmit time slots out of 8 time slots=> conducted power divided by (8/3) => -4.26dB

4TX-slots = 4 transmit time slots out of 8 time slots=> conducted power divided by (8/4) => -3.00dB

2. According to the conducted power as above, the GPRS measurements are performed with 3Txslot for GPRS850 and 2Txslot GPRS1900.



**<UMTS Conducted Power>**

The following tests were conducted according to the test requirements outlines in 3GPP TS 34.121 specification. A summary of these settings are illustrated below:

**HSDPA Setup Configuration:**

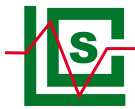
- The EUT was connected to Base Station E5515C referred to the Setup Configuration.
- The RF path losses were compensated into the measurements.
- A call was established between EUT and Base Station with following setting:
  - Set Gain Factors ( $\beta_c$  and  $\beta_d$ ) and parameters were set according to each
  - Specific sub-test in the following table, C10.1.4, quoted from the TS 34.121
  - Set RMC 12.2Kbps + HSDPA mode.
  - Set Cell Power = -86 dBm
  - Set HS-DSCH Configuration Type to FRC (H-set 1, QPSK)
  - Select HSDPA Uplink Parameters
  - Set Delta ACK, Delta NACK and Delta CQI = 8
  - Set Ack-Nack Repetition Factor to 3
  - Set CQI Feedback Cycle (k) to 4 ms
  - Set CQI Repetition Factor to 2
  - Power Ctrl Mode = All Up bits
- The transmitted maximum output power was recorded.

**Table C.10.1.4:  $\beta$  values for transmitter characteristics tests with HS-DPCCH**

Sub-test	$\beta_c$	$\beta_d$	$\beta_d$ (SF)	$\beta_c/\beta_d$	$\beta_{HS}$ (Note 1, Note 2)	CM (dB) (Note 3)	MPR (dB) (Note 3)
1	2/15	15/15	64	2/15	4/15	0.0	0.0
2	12/15 (Note 4)	15/15 (Note 4)	64	12/15 (Note 4)	24/15	1.0	0.0
3	15/15	8/15	64	15/8	30/15	1.5	0.5
4	15/15	4/15	64	15/4	30/15	1.5	0.5
<p>Note 1: <math>\Delta_{ACK}</math>, <math>\Delta_{NACK}</math> and <math>\Delta_{CQI} = 30/15</math> with <math>\beta_{HS} = 30/15 * \beta_c</math>.</p> <p>Note 2: For the HS-DPCCH power mask requirement test in clause 5.2C, 5.7A, and the Error Vector Magnitude (EVM) with HS-DPCCH test in clause 5.13.1A, and HSDPA EVM with phase discontinuity in clause 5.13.1AA, <math>\Delta_{ACK}</math> and <math>\Delta_{NACK} = 30/15</math> with <math>\beta_{HS} = 30/15 * \beta_c</math>, and <math>\Delta_{CQI} = 24/15</math> with <math>\beta_{HS} = 24/15 * \beta_c</math>.</p> <p>Note 3: CM = 1 for <math>\beta_c/\beta_d = 12/15</math>, <math>\beta_{HS}/\beta_c = 24/15</math>. For all other combinations of DPDCCH, DPCCH and HS-DPCCH the MPR is based on the relative CM difference. This is applicable for only UEs that support HSDPA in release 6 and later releases.</p> <p>Note 4: For subtest 2 the <math>\beta_c/\beta_d</math> ratio of 12/15 for the TFC during the measurement period (TF1, TF0) is achieved by setting the signalled gain factors for the reference TFC (TF1, TF1) to <math>\beta_c = 11/15</math> and <math>\beta_d = 15/15</math>.</p>							

**Setup Configuration****HSUPA Setup Configuration:**

- The EUT was connected to Base Station R&S CMU200 referred to the Setup Configuration.
- The RF path losses were compensated into the measurements.
- A call was established between EUT and Base Station with following setting \* :
  - Call Configs = 5.2B, 5.9B, 5.10B, and 5.13.2B with QPSK
  - Set the Gain Factors ( $\beta_c$  and  $\beta_d$ ) and parameters (AG Index) were set according to each specific sub-test in the following table, C11.1.3, quoted from the TS 34.121
  - Set Cell Power = -86 dBm
  - Set Channel Type = 12.2k + HSPA
  - Set UE Target Power
  - Power Ctrl Mode = Alternating bits
  - Set and observe the E-TFCI
  - Confirm that E-TFCI is equal to the target E-TFCI of 75 for sub-test 1, and other subtest's E-TFCI
- The transmitted maximum output power was recorded.

Table C.11.1.3:  $\beta$  values for transmitter characteristics tests with HS-DPCCH and E-DCH

Sub-test	$\beta_c$	$\beta_d$	$\beta_d$ (SF)	$\beta_c/\beta_d$	$\beta_{HS}$ (Note 1)	$\beta_{ec}$	$\beta_{ed}$ (Note 5) (Note 6)	$\beta_{ed}$ (SF)	$\beta_{ed}$ (Codes)	CM (dB) (Note 2)	MPR (dB) (Note 2)	AG Index (Note 6)	E-TFCI
1	11/15 (Note 3)	15/15 (Note 3)	64	11/15 (Note 3)	22/15	209/25	1309/225	4	1	1.0	0.0	20	75
2	6/15	15/15	64	6/15	12/15	12/15	94/75	4	1	3.0	2.0	12	67
3	15/15	9/15	64	15/9	30/15	30/15	$\beta_{ed1}$ : 47/15 $\beta_{ed2}$ : 47/15	4 4	2	2.0	1.0	15	92
4	2/15	15/15	64	2/15	4/15	2/15	56/75	4	1	3.0	2.0	17	71
5	15/15 (Note 4)	15/15 (Note 4)	64	15/15 (Note 4)	30/15	24/15	134/15	4	1	1.0	0.0	21	81

Note 1:  $\Delta_{ACK}$ ,  $\Delta_{NACK}$  and  $\Delta_{CQI} = 30/15$  with  $\beta_{hs} = 30/15 * \beta_c$ .

Note 2: CM = 1 for  $\beta_c/\beta_d = 12/15$ ,  $\beta_{hs}/\beta_c = 24/15$ . For all other combinations of DPDCH, DPCCH, HS-DPCCH, E-DPDCH and E-DPCCH the MPR is based on the relative CM difference.

Note 3: For subtest 1 the  $\beta_c/\beta_d$  ratio of 11/15 for the TFC during the measurement period (TF1, TF0) is achieved by setting the signalled gain factors for the reference TFC (TF1, TF1) to  $\beta_c = 10/15$  and  $\beta_d = 15/15$ .

Note 4: For subtest 5 the  $\beta_c/\beta_d$  ratio of 15/15 for the TFC during the measurement period (TF1, TF0) is achieved by setting the signalled gain factors for the reference TFC (TF1, TF1) to  $\beta_c = 14/15$  and  $\beta_d = 15/15$ .

Note 5: In case of testing by UE using E-DPDCH Physical Layer category 1, Sub-test 3 is omitted according to TS25.306 Table 5.1g.

Note 6:  $\beta_{ed}$  can not be set directly, it is set by Absolute Grant Value.

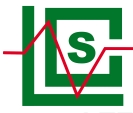
**General Note**

1. Per KDB 941225 D01, RMC 12.2kbps setting is used to evaluate SAR. If AMR 12.2kbps power is < 0.25dB higher than RMC 12.2kbps, SAR tests with AMR 12.2kbps can be excluded.
2. By design, AMR and HSDPA/HSUPA RF power will not be larger than RMC 12.2kbps, detailed information is included in Tune-up Procure exhibit.
3. It is expected by the manufacturer that MPR for some HSDPA/HSUPA subtests may differ from the specification of 3GPP, according to the chipset implementation in this model. The implementation and expected deviation are detailed in tune-up procedure exhibit.

**Conducted Power Measurement Results(WCDMA Band II/V)**

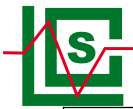
Item	Band	FDD Band V result (dBm)			FDD Band II result (dBm)		
		Test Channel			Test Channel		
		4132/ 826.4	4183/ 836.6	4233/ 846.6	9262/ 1852.4	9400/ 1880	9538/ 1907.6
RMC	12.2kbps	23.52	23.46	23.50	23.51	23.57	23.48
HSDPA	Subtest 1	22.90	22.77	22.74	22.96	22.96	22.96
	Subtest 2	22.76	22.72	22.80	22.84	22.90	22.89
	Subtest 3	22.74	22.77	22.87	22.89	22.78	22.75
	Subtest 4	22.72	22.78	22.86	22.74	22.71	22.81
HSUPA	Subtest 1	22.75	22.73	22.77	22.76	22.82	22.86
	Subtest 2	22.77	22.72	22.71	22.75	22.89	22.77
	Subtest 3	22.85	22.79	22.80	22.71	22.83	22.85
	Subtest 4	22.85	22.70	22.72	22.79	22.74	22.83
	Subtest 5	22.78	22.74	22.85	22.75	22.75	22.88

**Note:**1. When the maximum output power and tune-up tolerance specified for production units in a secondary mode is  $\leq 1/2$ dB higher than the primary mode (RMC12.2kbps) or when the highest reported SAR of the primary mode is scaled by the ratio of specified maximum output power and tune-up tolerance of secondary to primary mode and the adjusted SAR is  $\leq 1.2$  W/kg, SAR measurement is not required for the secondary mode.



## LTE Band2

BW (MHz)	Frequency (MHz)	RB Configuration		Average Power [dBm]	
		Size	Offset	QPSK	16QAM
1.4	1850.7	1	0	21.63	20.34
		1	2	21.71	20.55
		1	5	21.64	20.39
		3	0	21.63	20.38
		3	1	21.58	20.43
		3	3	21.65	20.42
		6	0	20.74	19.46
	1880.0	1	0	21.84	20.72
		1	2	21.99	20.74
		1	5	21.82	20.74
		3	0	21.92	20.68
		3	1	21.91	20.64
		3	3	21.90	20.64
		6	0	20.92	19.89
	1909.3	1	0	22.04	20.72
		1	2	22.26	20.91
		1	5	22.11	20.71
		3	0	22.04	20.80
		3	1	22.01	20.80
		3	3	22.04	20.81
		6	0	21.08	19.88
3	1851.5	1	0	21.60	20.43
		1	8	21.73	20.42
		1	14	21.77	20.44
		8	0	20.71	19.59
		8	4	20.70	19.58
		8	7	20.71	19.59
		15	0	20.62	19.47
	1880.0	1	0	21.87	20.74
		1	8	21.97	20.72
		1	14	21.96	20.64
		8	0	20.88	19.89
		8	4	20.92	19.91
		8	7	20.88	19.88
		15	0	20.86	19.80
	1908.5	1	0	21.99	20.85
		1	8	22.09	20.75
		1	14	22.10	20.74
		8	0	21.01	20.02
		8	4	21.03	19.97
		8	7	21.04	19.97
		15	0	20.99	19.88
5	1852.5	1	0	21.55	20.43
		1	12	21.74	20.65
		1	24	21.63	20.56
		12	0	20.65	19.52
		12	6	20.62	19.53
		12	13	20.60	19.58
		25	0	20.60	19.59
	1880.0	1	0	21.82	20.75
		1	12	21.97	20.85
		1	24	21.83	20.70
		12	0	20.85	19.81
		12	6	20.84	19.78
		12	13	20.87	19.84
		25	0	20.85	19.88
	1907.5	1	0	21.92	20.96
		1	12	22.07	21.06



		1	24	21.91	20.88
		12	0	20.96	20.02
		12	6	20.99	19.97
		12	13	20.94	19.96
		25	0	20.92	19.95
10	1855.0	1	0	21.56	20.53
		1	24	21.77	20.80
		1	49	21.72	20.73
		25	0	20.62	19.65
		25	12	20.68	19.60
		25	25	20.79	19.75
		50	0	20.73	19.70
	1880.0	1	0	21.89	20.84
		1	24	21.99	20.96
		1	49	21.80	20.80
		25	0	20.86	19.84
		25	12	20.87	19.87
		25	25	20.81	19.81
		50	0	20.85	19.83
	1905.0	1	0	22.04	20.78
		1	24	22.19	21.00
		1	49	22.11	20.74
		25	0	21.03	20.06
		25	12	21.02	20.06
		25	25	21.06	20.10
		50	0	21.03	20.06
15	1857.5	1	0	21.53	20.59
		1	38	21.75	20.85
		1	74	21.73	20.86
		37	0	20.68	20.62
		37	18	20.67	20.68
		37	37	20.74	20.87
		75	0	20.93	19.81
	1880.0	1	0	21.73	20.86
		1	38	21.85	20.99
		1	74	21.71	20.72
		37	0	20.83	20.74
		37	18	20.89	20.97
		37	37	20.63	20.64
		75	0	20.92	19.91
	1902.5	1	0	21.87	20.88
		1	38	21.96	20.98
		1	74	21.90	20.89
		37	0	20.88	20.89
		37	18	21.06	21.07
		37	37	20.86	20.85
		75	0	21.17	20.17
20	1860.0	1	0	21.54	20.58
		1	49	22.09	21.21
		1	99	21.79	20.67
		50	0	20.95	19.94
		50	25	20.98	19.95
		50	50	21.01	20.12
		100	0	20.97	19.97
	1880.0	1	0	21.76	20.88
		1	49	22.08	21.05
		1	99	21.69	20.69
		50	0	20.87	19.86
		50	25	20.87	19.92
		50	50	20.79	19.93
		100	0	20.87	19.86





	1900.0	1	0	21.77	20.76
		1	49	22.13	21.05
		1	99	21.79	20.79
		50	0	21.09	20.12
		50	25	21.18	20.17
		50	50	21.18	20.22
		100	0	21.15	20.13

**LTE Band4**

BW (MHz)	Frequency (MHz)	RB Configuration		Average Power [dBm]	
		Size	Offset	QPSK	16QAM
1.4	1710.7	1	0	20.41	19.24
		1	2	20.48	19.45
		1	5	20.38	19.30
		3	0	20.42	19.21
		3	1	20.40	19.21
		3	3	20.41	19.24
		6	0	19.48	18.47
	1732.5	1	0	20.68	19.65
		1	2	20.87	19.79
		1	5	20.71	19.67
		3	0	20.82	19.63
		3	1	20.83	19.66
		3	3	20.83	19.62
		6	0	19.86	18.81
	1754.3	1	0	20.61	19.44
		1	2	20.74	19.61
		1	5	20.59	19.46
		3	0	20.67	19.51
		3	1	20.69	19.50
		3	3	20.68	19.55
		6	0	19.62	18.47
3	1711.5	1	0	20.50	19.37
		1	8	20.64	19.38
		1	14	20.63	19.55
		8	0	19.49	18.57
		8	4	19.54	18.53
		8	7	19.52	18.52
		15	0	19.51	18.49
	1732.5	1	0	20.89	19.80
		1	8	20.89	19.69
		1	14	20.84	19.67
		8	0	19.90	18.86
		8	4	19.87	18.89
		8	7	19.86	18.92
		15	0	19.85	18.85
	1753.5	1	0	20.73	19.61
		1	8	20.69	19.61
		1	14	20.72	19.56
		8	0	19.69	18.68
		8	4	19.71	18.68
		8	7	19.66	18.67
		15	0	19.64	18.59
5	1712.0	1	0	20.53	19.43
		1	12	20.70	19.61
		1	24	20.65	19.56
		12	0	19.55	18.46
		12	6	19.53	18.54
		12	13	19.56	18.57
		25	0	19.55	18.55
	1732.5	1	0	20.89	19.83



		1	12	20.91	19.85
		1	24	20.75	19.80
		12	0	19.82	18.85
		12	6	19.83	18.82
		12	13	19.86	18.85
		25	0	19.92	18.89
		25	0	19.92	18.89
	1752.5	1	0	20.60	19.72
		1	12	20.70	19.82
		1	24	20.59	19.68
		12	0	19.70	18.75
		12	6	19.67	18.71
		12	13	19.64	18.62
		25	0	19.70	18.69
10	1715.0	1	0	20.47	19.51
		1	24	20.71	19.84
		1	49	20.75	19.78
		25	0	19.66	18.66
		25	12	19.67	18.63
		25	25	19.71	18.67
		50	0	19.66	18.70
	1732.5	1	0	20.91	19.96
		1	24	21.08	20.00
		1	49	20.73	19.78
		25	0	19.94	18.87
		25	12	19.89	18.93
		25	25	19.92	18.92
		50	0	19.89	18.94
	1750.0	1	0	20.68	19.52
		1	24	20.87	19.72
		1	49	20.71	19.53
		25	0	19.77	18.81
		25	12	19.74	18.86
		25	25	19.64	18.76
		50	0	19.79	18.76
15	1717.5	1	0	20.39	19.49
		1	38	20.73	19.86
		1	74	20.63	19.87
		37	0	19.51	19.54
		37	18	19.83	19.87
		37	37	19.87	19.85
		75	0	19.75	18.71
	1732.5	1	0	20.87	19.97
		1	38	20.78	19.97
		1	74	20.57	19.79
		37	0	19.99	19.99
		37	18	19.99	19.98
		37	37	19.79	19.75
		75	0	19.95	18.92
	1747.5	1	0	20.63	19.74
		1	38	20.64	19.72
		1	74	20.60	19.76
		37	0	19.73	19.73
		37	18	19.82	19.71
		37	37	19.68	19.71
		75	0	19.80	18.66
20	1720.0	1	0	20.35	19.44
		1	49	21.02	19.96
		1	99	20.56	19.68
		50	0	19.75	18.81
		50	25	19.74	18.82
		50	50	19.88	18.91



	1732.5	100	0	19.77	18.82
		1	0	20.75	19.95
		1	49	21.05	19.93
		1	99	20.51	19.66
		50	0	19.85	18.92
		50	25	19.89	18.88
		50	50	19.91	18.99
		100	0	19.88	18.86
	1745.0	1	0	20.63	19.73
		1	49	20.86	19.95
		1	99	20.51	19.45
		50	0	19.75	18.76
		50	25	19.73	18.75
		50	50	19.69	18.65
		100	0	19.66	18.65

**LTE Band 7**

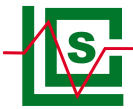
BW (MHz)	Frequency (MHz)	RB Configuration		Average Power [dBm]	
		Size	Offset	QPSK	16QAM
5	2502.5	1	0	22.28	21.17
		1	12	22.42	21.33
		1	24	22.28	21.18
		12	0	21.27	20.26
		12	6	21.30	20.27
		12	13	21.36	20.30
		25	0	21.28	20.30
	2535.0	1	0	22.20	20.96
		1	12	22.32	21.14
		1	24	22.18	21.10
		12	0	21.14	20.10
		12	6	21.16	20.12
		12	13	21.23	20.16
		25	0	21.23	20.17
	2567.5	1	0	22.39	21.20
		1	12	22.20	20.90
		1	24	21.84	20.80
		12	0	20.96	19.91
		12	6	21.14	20.03
		12	13	20.80	19.93
		25	0	20.94	19.88
10	2505.0	1	0	22.31	21.29
		1	24	22.40	21.38
		1	49	22.23	21.21
		25	0	21.33	20.35
		25	12	21.23	20.25
		25	25	21.33	20.12
		50	0	20.98	19.85
	2535.0	1	0	22.08	20.56
		1	24	22.14	20.74
		1	49	21.89	20.94
		25	0	20.88	19.86
		25	12	20.89	19.96
		25	25	21.25	20.07
		50	0	20.92	19.91
	2565.0	1	0	22.26	20.64
		1	24	22.14	20.72
		1	49	21.91	20.68
		25	0	20.90	19.86
		25	12	20.93	19.86
		25	25	20.78	19.83



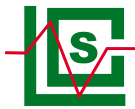
		50	0	20.81	19.83
15	2507.5	1	0	22.22	21.00
		1	38	22.28	21.40
		1	74	22.07	20.97
		37	0	21.32	21.28
		37	18	21.31	21.33
		37	37	20.98	20.96
		75	0	21.45	20.32
	2535.0	1	0	20.00	21.00
		1	38	22.26	21.21
		1	74	22.21	21.41
		37	0	21.02	21.01
		37	18	21.23	21.19
		37	37	21.32	21.31
		75	0	21.39	20.32
	2562.5	1	0	22.48	21.35
		1	38	22.53	21.39
		1	74	22.17	21.22
		37	0	21.36	21.36
		37	18	21.41	21.38
		37	37	21.29	21.23
		75	0	21.57	20.45
20	2510.0	1	0	22.04	21.15
		1	49	22.35	21.39
		1	99	21.81	20.63
		50	0	21.18	20.19
		50	25	21.18	20.20
		50	50	20.94	19.90
		100	0	21.06	20.09
	2535.0	1	0	20.00	20.82
		1	49	22.33	21.30
		1	99	22.07	21.22
		50	0	20.97	19.88
		50	25	20.97	19.88
		50	50	21.30	20.29
		100	0	21.15	20.05
	2560	1	0	22.32	21.25
		1	49	22.74	21.48
		1	99	22.07	21.03
		50	0	21.36	20.28
		50	25	21.32	20.28
		50	50	21.18	20.12
		100	0	21.24	20.19

## &lt;WLAN 2.4GHz Conducted Power&gt;

Mode	Channel	Frequency (MHz)	Data rate (Mbps)	Average Output Power (dBm)
IEEE 802.11b	1	2412	1	15.41
			2	15.36
			5.5	15.29
			11	15.21
	6	2437	1	16.33
			2	16.26
			5.5	16.28
			11	16.20
	11	2462	1	15.75
			2	15.69
			5.5	15.63
			11	15.55
IEEE 802.11g	1	2412	6	15.03
			9	14.96



			12	14.92
			18	14.86
			24	14.80
			36	14.76
			48	14.69
			54	14.61
			6	2437
	9	15.82		
	12	15.74		
	18	15.68		
	24	15.61		
	36	15.55		
	48	15.49		
	54	15.44		
	11	2462	6	15.76
			9	15.70
			12	15.65
			18	15.60
			24	15.54
			36	15.46
			48	15.39
54	15.33			
IEEE 802.11n HT20	1	2412	MCS0	14.97
			MCS1	14.92
			MCS2	14.86
			MCS3	14.81
			MCS4	14.75
			MCS5	14.66
			MCS6	14.60
			MCS7	14.54
	6	2437	MCS0	15.85
			MCS1	15.79
			MCS2	15.73
			MCS3	15.68
			MCS4	15.63
			MCS5	15.54
			MCS6	15.49
			MCS7	15.43
	11	2462	MCS0	17.29
			MCS1	17.22
			MCS2	17.16
			MCS3	17.11
			MCS4	17.06
MCS5			17.00	
MCS6			16.96	
MCS7			16.90	
IEEE 802.11n HT40	3	2422	MCS0	14.92
			MCS1	14.86
			MCS2	14.80
			MCS3	14.75
			MCS4	14.70
			MCS5	14.66
			MCS6	14.58
			MCS7	14.51
	6	2437	MCS0	15.28
			MCS1	15.21
			MCS2	15.16
			MCS3	15.10
			MCS4	15.04
			MCS5	14.97
MCS6	14.89			



	9	2452	MCS7	14.83
			MCS0	15.22
			MCS1	15.16
			MCS2	15.11
			MCS3	15.04
			MCS4	14.98
			MCS5	14.91
			MCS6	14.86
			MCS7	14.80

**Note:** SAR is not required for the following 2.4 GHz OFDM conditions as the highest reported SAR for DSSS is adjusted by the ratio of OFDM to DSSS specified maximum output power and the adjusted SAR is  $\leq 1.2$  W/kg.

**<WLAN 5GHz U-NI-1 Conducted Power**

Mode	Channel	Frequency (MHz)	Average Conducted Output Power(dBm)	Worst Case Test Rate Data
IEEE 802.11a	36	5180	13.07	MCS0
	40	5200	13.17	MCS0
	48	5240	12.61	MCS0
IEEE 802.11n HT20	36	5180	13.03	MCS0
	40	5200	12.72	MCS0
	48	5240	12.33	MCS0
IEEE 802.11n HT40	38	5190	12.17	MCS0
	46	5230	11.49	MCS0
IEEE 802.11AC20	36	5180	12.76	MCS0
	40	5200	12.67	MCS0
	48	5240	12.28	MCS0
IEEE 802.11AC40	38	5190	12.10	MCS0
	46	5230	11.57	MCS0
IEEE 802.11AC80	42	5210	10.59	MCS0

**<WLAN 5GHz U-NI-3 Conducted Power>**

Mode	Channel	Frequency (MHz)	Average Conducted Output Power(dBm)	Worst Case Test Rate Data
IEEE 802.11a	149	5745	10.16	MCS0
	157	5785	9.52	MCS0
	165	5825	9.81	MCS0
IEEE 802.11n HT20	149	5745	10.08	MCS0
	157	5785	9.42	MCS0
	165	5825	10.30	MCS0
IEEE 802.11n HT40	151	5755	9.22	MCS0
	159	5795	8.76	MCS0
IEEE 802.11AC20	149	5745	10.04	MCS0
	157	5785	9.39	MCS0
	165	5825	10.33	MCS0
IEEE 802.11AC40	151	5755	9.31	MCS0
	159	5795	8.81	MCS0
IEEE 802.11AC80	155	5775	13.77	MCS0



## &lt;BT Conducted Power&gt;

Mode	channel	Frequency (MHz)	Conducted AVG output power (dBm)
BLE_1M	0	2402	-7.02
	20	2442	-4.26
	39	2480	-5.69
BLE_2M	0	2402	-4.90
	20	2442	-4.64
	39	2480	-5.00
GFSK	0	2402	6.08
	39	2441	7.36
	78	2480	7.46
$\pi/4$ -DQPSK	0	2402	5.50
	39	2441	7.63
	78	2480	6.45
8DPSK	0	2402	5.42
	39	2441	7.57
	78	2480	6.40

Per KDB 447498 D01v06, the 1-g and 10-g SAR test exclusion thresholds for 100 MHz to 6 GHz at test separation distances  $\leq 50$  mm are determined by:

$$[(\text{max. power of channel, including tune-up tolerance, mW})/(\text{min. test separation distance, mm})] \cdot \sqrt{f(\text{GHz})} \leq 3.0$$
 for 1-g SAR and  $\leq 7.5$  for 10-g extremity SAR

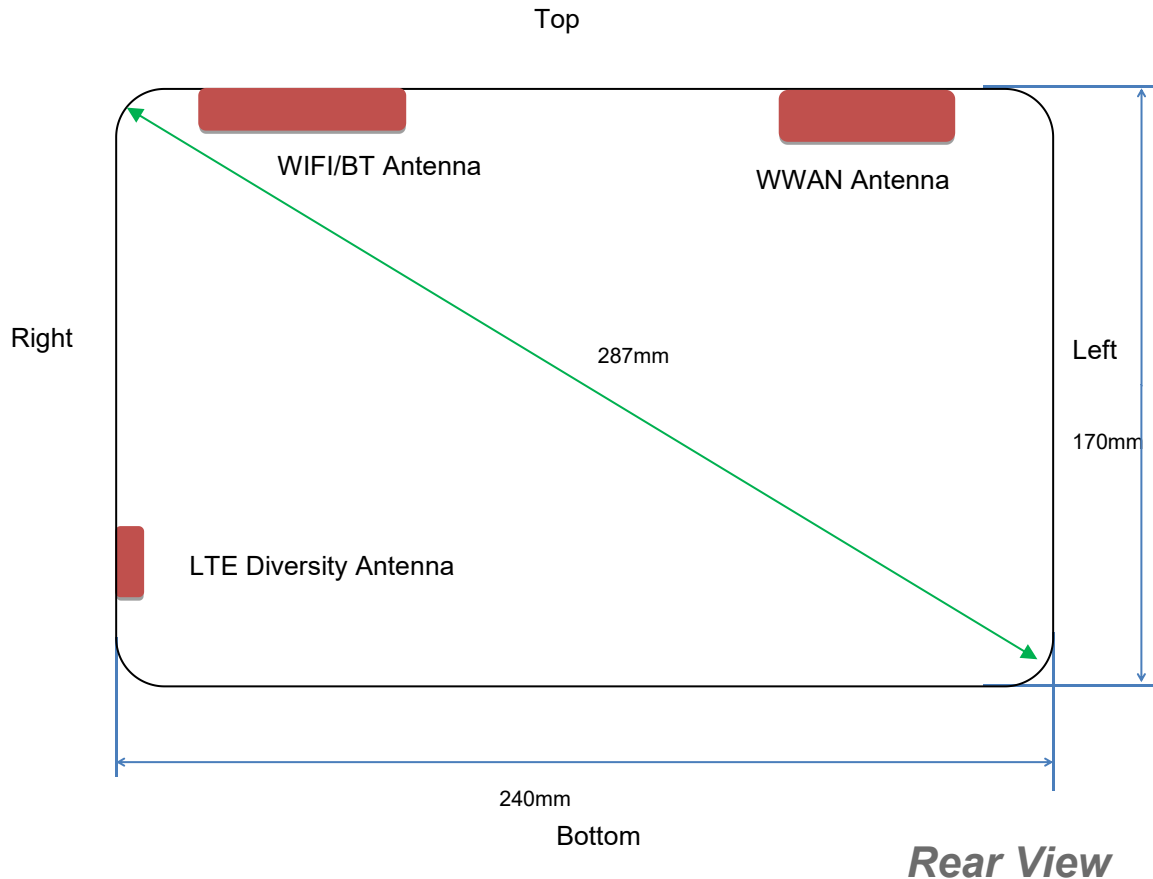
- $f(\text{GHz})$  is the RF channel transmit frequency in GHz
- Power and distance are rounded to the nearest mW and mm before calculation
- The result is rounded to one decimal place for comparison

Bluetooth Turn up Power (dBm)	Separation Distance (mm)	Frequency (GHz)	Exclusion Thresholds
8.0	5	2.45	2.0

Per KDB 447498 D01v06, when the minimum test separation distance is  $< 5$  mm, a distance of 5 mm is applied to determine SAR test exclusion. The test exclusion threshold is  $2.0 < 3.0$ , SAR testing is not required.



## 4.2. Transmit Antennas and SAR Measurement Position



Antenna information:

WLAN/BT Antenna	WLAN/BT TX/RX
WWAN Antenna	GSM/UMTS/LTE TX/RX

Note:

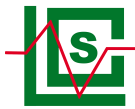
- 1). Per KDB648474 D04, because the overall diagonal distance of this devices is 287mm>160mm, it is considered as "tablet PC" device.
- 2). Per KDB648474 D04, 10-g extremity SAR is not required when Body-Worn mode 1-g reported SAR < 1.2 W/Kg.
- 3). According to the KDB941225 D06 Hot Spot SAR v02, the edges with less than 25 mm distance to the antennas need to be tested for SAR.
- 4). Per KDB 616217 D04, The antennas in tablets are typically located near the back (bottom) surface and/or along the edges of the devices; therefore, SAR evaluation is required for these configurations. Exposures from antennas through the front (top) surface of the displaysection of a full-size tablet, away from the edges, are generally limited to the user's hands.

Distance of The Antenna to the EUT surface and edge (mm)					
Antennas	Back	Top Side	Bottom Side	Left Side	Right Side
BT/WLAN	<5	<5	157	<5	144
WWAN	<5	<5	160	145	<5

Positions for SAR tests; Hotspot mode					
Antennas	Back	Top Side	Bottom Side	Left Side	Right Side
BT/WLAN	Yes	Yes	No	Yes	No
WWAN	Yes	Yes	No	No	Yes

**General Note:** Referring to KDB 941225 D06 v02, When the overall device length and width are  $\geq 9\text{cm} \times 5\text{cm}$ , the test distance is 0mm, SAR must be measured for all sides and surfaces with a transmitting antenna located with 25mm from that surface or edge.





### 4.3. SAR Measurement Results

The calculated SAR is obtained by the following formula:

$$\text{Reported SAR} = \text{Measured SAR} * 10^{(P_{\text{target}} - P_{\text{measured}})/10}$$

$$\text{Scaling factor} = 10^{(P_{\text{target}} - P_{\text{measured}})/10}$$

$$\text{Reported SAR} = \text{Measured SAR} * \text{Scaling factor}$$

Where

$P_{\text{target}}$  is the power of manufacturing upper limit;

$P_{\text{measured}}$  is the measured power;

Measured SAR is measured SAR at measured power which including power drift)

Reported SAR which including Power Drift and Scaling factor

#### Duty Cycle

Test Mode	Duty Cycle
GSM	3:8
UMTS	1:1
LTE	1:1
WLAN2450	1:1
WLAN5200	1:1
WLAN5800	1:1

#### 4.3.1 SAR Results

##### SAR Values [GSM 850]

Ch.	Freq. (MHz)	Time slots	Test Position	Conducted Power (dBm)	Maximum Allowed Power (dBm)	Power Drift (%)	Scaling Factor	SAR <sub>1-g</sub> results(W/kg)		Graph Results
								Measured	Reported	
measured / reported SAR numbers - Body (hotspot open, distance 0mm)										
190	836.6	3Txslots	Rear	29.52	30.00	1.86	1.117	<b>0.313</b>	<b>0.350</b>	<b>Plot 1</b>
190	836.6	3Txslots	Left	29.52	30.00	0.54	1.117	0.276	0.308	
190	836.6	3Txslots	Top	29.52	30.00	2.99	1.117	0.263	0.294	

Remark:

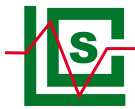
1. The value with black color is the maximum SAR Value of each test band.
2. The frame average of GPRS (4Tx slots) higher than GSM and sample can support VoIP function, tested at GPRS (4Tx slots) mode for head.
3. Per FCC KDB Publication 447498 D01, if the reported (scaled) SAR measured at the middle channel or highest output power channel for each test configuration is  $\leq 0.8$  W/kg then testing at the other channels is optional for such test configuration(s).

##### SAR Values [GSM 1900]

Ch.	Freq. (MHz)	time slots	Test Position	Conducted Power (dBm)	Maximum Allowed Power (dBm)	Power Drift (%)	Scaling Factor	SAR <sub>1-g</sub> results(W/kg)		Graph Results
								Measured	Reported	
measured / reported SAR numbers – Body (hotspot open, distance 0mm)										
661	1880.0	2Txslots	Rear	28.02	28.50	-0.25	1.117	<b>0.638</b>	<b>0.713</b>	<b>Plot 2</b>
661	1880.0	2Txslots	Left	28.02	28.50	3.74	1.117	0.598	0.668	
661	1880.0	2Txslots	Top	28.02	28.50	-1.14	1.117	0.576	0.643	

Remark:

1. The value with black color is the maximum SAR Value of each test band.
2. The frame average of GPRS (4Tx slots) higher than GSM and sample can support VoIP function, tested at GPRS (4Tx slots) mode for head.
3. Per FCC KDB Publication 447498 D01, if the reported (scaled) SAR measured at the middle channel or highest output power channel for each test configuration is  $\leq 0.8$  W/kg then testing at the other channels is optional for such test configuration(s).

**SAR Values [WCDMA Band V]**

Ch.	Freq. (MHz)	Channel Type	Test Position	Conducted Power (dBm)	Maximum Allowed Power (dBm)	Power Drift (%)	Scaling Factor	SAR <sub>1-g</sub> results(W/kg)		Graph Results
								Measured	Reported	
measured / reported SAR numbers - Body (hotspot open, distance 0mm)										
4132	826.4	RMC*	Rear	22.90	23.00	-0.88	1.023	0.302	0.309	Plot 3
4132	826.4	RMC*	Left	22.90	23.00	-1.41	1.023	0.296	0.303	
4132	826.4	RMC*	Top	22.90	23.00	0.99	1.023	0.284	0.291	

Remark:

1. The value with block color is the maximum SAR Value of each test band.
2. Per FCC KDB Publication 447498 D01, if the reported (scaled) SAR measured at the middle channel or highest output power channel for each test configuration is  $\leq 0.8$  W/kg then testing at the other channels is optional for such test configuration(s).
3. RMC\* - RMC 12.2kbps mode;

**SAR Values [WCDMA Band II]**

Ch.	Freq. (MHz)	Channel Type	Test Position	Conducted Power (dBm)	Maximum Allowed Power (dBm)	Power Drift (%)	Scaling Factor	SAR <sub>1-g</sub> results(W/kg)		Graph Results
								Measured	Reported	
measured / reported SAR numbers - Body (hotspot open, distance 0mm)										
9400	1880	RMC	Rear	22.96	23.00	0.67	1.009	0.360	0.363	Plot 4
9400	1880	RMC	Left	22.96	23.00	-0.64	1.009	0.351	0.354	
9400	1880	RMC	Top	22.96	23.00	2.85	1.009	0.339	0.342	

Remark:

1. The value with block color is the maximum SAR Value of each test band.
2. Per FCC KDB Publication 447498 D01, if the reported (scaled) SAR measured at the middle channel or highest output power channel for each test configuration is  $\leq 0.8$  W/kg then testing at the other channels is optional for such test configuration(s).
3. RMC\* - RMC 12.2kbps mode;

**SAR Values [LTE Band 2]**

Ch.	Freq. (MHz)	Channel Type (20M)	Test Position	Conducted Power (dBm)	Maximum Allowed Power (dBm)	Power Drift (%)	Scaling Factor	SAR <sub>1-g</sub> results(W/kg)		Graph Results
								Measured	Reported	
measured / reported SAR numbers - Body (hotspot open, distance 0mm)										
19100	1900.0	1RB	Rear	22.13	22.50	-0.09	1.089	0.280	0.305	Plot 5
19100	1900.0	1RB	Left	22.13	22.50	-0.90	1.089	0.266	0.290	
19100	1900.0	1RB	Top	22.13	22.50	1.74	1.089	0.253	0.275	
19100	1900.0	50%RB	Rear	21.18	21.50	3.54	1.076	0.142	0.153	
19100	1900.0	50%RB	Left	21.18	21.50	2.85	1.076	0.136	0.146	
19100	1900.0	50%RB	Top	21.18	21.50	-3.33	1.076	0.127	0.137	

**SAR Values [LTE Band 4]**

Ch.	Freq. (MHz)	Channel Type (20M)	Test Position	Conducted Power (dBm)	Maximum Allowed Power (dBm)	Power Drift (%)	Scaling Factor	SAR <sub>1-g</sub> results(W/kg)		Graph Results
								Measured	Reported	
measured / reported SAR numbers - Body (hotspot open, distance 0mm)										
20175	1732.5	1RB	Rear	21.05	21.50	2.15	1.109	0.393	0.436	Plot 6
20175	1732.5	1RB	Left	21.05	21.50	3.74	1.109	0.382	0.424	
20175	1732.5	1RB	Top	21.05	21.50	0.85	1.109	0.366	0.406	
20175	1732.5	50%RB	Rear	19.91	20.00	3.45	1.021	0.193	0.197	
20175	1732.5	50%RB	Left	19.91	20.00	-2.00	1.021	0.186	0.190	
20175	1732.5	50%RB	Top	19.91	20.00	0.64	1.021	0.177	0.181	

**SAR Values [LTE Band 7]**

Ch.	Freq. (MHz)	Channel Type (10M)	Test Position	Conducted Power (dBm)	Maximum Allowed Power (dBm)	Power Drift (%)	Scaling Factor	SAR1-g results(W/kg)		Graph Results
								Measured	Reported	
measured / reported SAR numbers - Body (hotspot open, distance 0mm)										
21350	2560.0	1RB	Rear	22.74	23.00	-1.15	1.062	<b>0.265</b>	<b>0.281</b>	<b>Plot 7</b>
21350	2560.0	1RB	Left	22.74	23.00	1.74	1.062	0.247	0.262	
21350	2560.0	1RB	Top	22.74	23.00	0.56	1.062	0.231	0.245	
21350	2560.0	50%RB	Rear	21.36	21.50	2.85	1.033	0.133	0.137	
21350	2560.0	50%RB	Left	21.36	21.50	1.44	1.033	0.124	0.128	
21350	2560.0	50%RB	Top	21.36	21.50	-0.85	1.033	0.119	0.123	

**SAR Values [WIFI2.4G]**

Ch.	Freq. (MHz)	Service	Test Position	Condu cted Power (dBm)	Maximum Allowed Power (dBm)	Power Drift (%)	Scaling Factor	SAR1-g results(W/kg)		Graph Results
								Measured	Reported	
measured / reported SAR numbers - Body (hotspot open, distance 0mm)										
11	2462	802.11n HT20	Back	17.29	17.50	-0.13	1.050	<b>0.371</b>	<b>0.389</b>	<b>Plot 8</b>
11	2462	802.11n HT20	Right	17.29	17.50	2.87	1.050	0.362	0.380	
11	2462	802.11n HT20	Top	17.29	17.50	-2.55	1.050	0.343	0.360	

**SAR Values [WIFI5.2G]**

Ch.	Freq. (MHz)	Service	Test Position	Conducted Power (dBm)	Maximum Allowed Power (dBm)	Power Drift (%)	Scaling Factor	SAR <sub>1-g</sub> results(W/kg)		Graph Results
								Measured	Reported	
measured / reported SAR numbers - Body (hotspot open, distance 0mm)										
40	5200	802.11a	Back	13.17	13.50	-0.44	1.079	<b>0.299</b>	<b>0.323</b>	<b>Plot 9</b>
40	5200	802.11a	Right	13.17	13.50	0.85	1.079	0.287	0.310	
40	5200	802.11a	Top	13.17	13.50	-1.44	1.079	0.269	0.290	

**SAR Values [WIFI5.8G]**

Ch.	Freq. (MHz)	Service	Test Position	Conducted Power (dBm)	Maximum Allowed Power (dBm)	Power Drift (%)	Scaling Factor	SAR <sub>1-g</sub> results(W/kg)		Graph Results
								Measured	Reported	
measured / reported SAR numbers - Body (hotspot open, distance 0mm)										
155	5775	802.11AC80	Back	13.77	14.00	-0.67	1.054	0.220	0.232	Plot 10
155	5775	802.11AC80	Right	13.77	14.00	3.74	1.054	0.211	0.222	
155	5775	802.11AC80	Top	13.77	14.00	-0.55	1.054	0.203	0.214	

**Remark:**

1. The value with blue color is the maximum SAR Value of each test band.
2. Per FCC KDB Publication 447498 D01, if the reported (scaled) SAR measured at the middle channel or highest output power channel for each test configuration is  $\leq 0.8$  W/kg then testing at the other channels is optional for such test configuration(s).
3. When the same maximum output power is specified for both bands, begin SAR measurement in U-NII-2A band by applying the OFDM SAR requirements.19 If the highest reported SAR for a test configuration is  $\leq 1.2$  W/kg, SAR is not required for U-NII-1 band for that configuration (802.11 mode and exposure condition); otherwise, each band is tested independently for SAR.
4. When different maximum output power is specified for the bands, begin SAR measurement in the band with higher specified maximum output power. The highest reported SAR for the tested configuration is adjusted by the ratio of lower to higher specified maximum output power for the two bands. When the adjusted SAR is  $\leq 1.2$  W/kg, SAR is not required for the band with lower maximum output power in that test configuration; otherwise, each band is tested independently for SAR.



### 4.3.2 Standalone SAR Test Exclusion Considerations and Estimated SAR

Per KDB447498 requires when the standalone SAR test exclusion of section 4.3.1 is applied to an antenna that transmits simultaneously with other antennas, the standalone SAR must be estimated according to the following to determine simultaneous transmission SAR test exclusion;

•  $(\text{max. power of channel, including tune-up tolerance, mW}) / (\text{min. test separation distance, mm}) \cdot [\sqrt{f(\text{GHz})} / x]$  W/kg for test separation distances  $\leq 50$  mm;

where  $x = 7.5$  for 1-g SAR, and  $x = 18.75$  for 10-g SAR.

• 0.4 W/kg for 1-g SAR and 1.0 W/kg for 10-g SAR, when the test separation distances is  $> 50$  mm

Per FCC KD B447498 D01, simultaneous transmission SAR test exclusion may be applied when the sum of the 1-g SAR for all the transmitting antenna in a specific a physical test configuration is  $\leq 1.6$  W/Kg. When the sum is greater than the SAR limit, SAR test exclusion is determined by the SAR to peak location separation ratio.

$$\text{Ratio} = \frac{(\text{SAR}_1 + \text{SAR}_2)^{1.5}}{(\text{peak location separation, mm})} < 0.04$$

Estimated stand alone SAR					
Communication system	Frequency (MHz)	Configuration	Maximum Power (dBm)	Separation Distance (mm)	Estimated SAR <sub>1-g</sub> (W/kg)
Bluetooth*	2450	Hotspot	8.0	5	0.264
Bluetooth*	2450	Body-worn	8.0	5	0.264

Remark:

1. Bluetooth\*- Including Lower power Bluetooth
2. Maximum average power including tune-up tolerance;
3. When the minimum test separation distance is  $< 5$  mm, a distance of 5 mm is applied to determine SAR test exclusion
4. Body as body use distance is 10mm from manufacturer declaration of user manual

## 4.4. Simultaneous TX SAR Considerations

### 4.4.1 Introduction

Simultaneous transmission SAR test exclusion is determined for each operating configuration and exposure condition according to the reported standalone SAR of each applicable simultaneous transmitting antenna. The device has 4 antennas, WWAN main antenna, WWAN diversity antenna(RX only), and WiFi antenna supports 2.4Wi-Fi. The 2 TX antennas can always transmit simultaneously. The work mode combination is showed as below table.;

Application Simultaneous Transmission information:

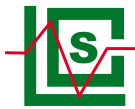
Combination No.	Mode
1	WWAN+WIFI
2	WWAN+BT

### 4.4.2 Evaluation of Simultaneous SAR

#### Body Hotspot Exposure Conditions

##### Simultaneous transmission SAR for WiFi and GSM

Test Position	GSM850 Reported SAR <sub>1-g</sub> (W/kg)	GSM1900 Reported SAR <sub>1-g</sub> (W/kg)	WiFi2.4G Reported SAR <sub>1-g</sub> (W/kg)	WiFi5.2G Reported SAR <sub>1-g</sub> (W/kg)	WiFi5.8G Reported SAR <sub>1-g</sub> (W/kg)	MAX. $\Sigma$ SAR <sub>1-g</sub> (W/kg)	SAR <sub>1-g</sub> Limit (W/kg)	Peak location separation ratio	Simut Meas. Required
Front	/	/	/	/	/	/	1.6	no	no
Rear	0.350	<b>0.713</b>	<b>0.389</b>	0.323	0.232	<b>1.102</b>	1.6	no	no
Left	0.308	<b>0.668</b>	/	/	/	0.668	1.6	no	no
Right	/	/	<b>0.380</b>	0.310	0.222	0.380	1.6	no	no
Bottom	/	/	/	/	/	/	1.6	no	no
Top	0.294	<b>0.643</b>	<b>0.360</b>	0.290	0.214	1.003	1.6	no	no



## Simultaneous transmission SAR for WiFi and UMTS

Test Position	UMTS Band V Reported SAR1-g (W/kg)	UMTS Band II Reported SAR1-g (W/kg)	WiFi2.4G Reported SAR1-g (W/kg)	WiFi5.2G Reported SAR1-g (W/kg)	WiFi5.8G Reported SAR1-g (W/kg)	MAX. $\Sigma$ SAR1-g (W/kg)	SAR1-g Limit (W/kg)	Peak location separation ratio	Simut Meas. Required
Front	/	/	/	/	/	/	1.6	no	no
Rear	0.309	<b>0.363</b>	<b>0.389</b>	0.323	0.232	<b>0.752</b>	1.6	no	no
Left	0.303	<b>0.354</b>	/	/	/	0.354	1.6	no	no
Right	/	/	<b>0.380</b>	0.310	0.222	0.380	1.6	no	no
Bottom	/	/	/	/	/	/	1.6	no	no
Top	0.291	<b>0.342</b>	<b>0.360</b>	0.290	0.214	0.702	1.6	no	no

## SAR for WiFi and LTE

Reported SAR1-g(W/kg)	Test Position					
	Front	Rear	Left	Right	Bottom	Top
LTE Band2	/	0.305	0.290	/	/	0.275
LTE Band4	/	<b>0.436</b>	<b>0.424</b>	/	/	<b>0.406</b>
LTE Band7	/	0.281	0.262	/	/	0.245
WiFi2.4G	/	<b>0.389</b>	/	<b>0.380</b>	/	<b>0.360</b>
WiFi5.2G	/	0.323	/	0.310	/	0.290
WiFi5.8G	/	0.232	/	0.222	/	0.214
MAX. $\Sigma$ SAR1-g (W/kg)	/	<b>0.825</b>	0.424	0.380	/	0.766
SAR1-g Limit (W/kg)	1.6	1.6	1.6	1.6	1.6	1.6
Peak location separation ratio	no	no	no	no	no	no
Simut Meas. Required	no	no	no	no	no	no

## Simultaneous transmission SAR for BT and GSM

Test Position	GSM850 Reported SAR1-g (W/kg)	GSM1900 Reported SAR1-g (W/kg)	BT Estimated SAR1-g (W/kg)	MAX. $\Sigma$ SAR1-g (W/kg)	SAR1-g Limit (W/kg)	Peak location separation ratio	Simut Meas. Required
Front	/	/	/	/	1.6	no	no
Rear	0.350	<b>0.713</b>	<b>0.264</b>	<b>0.977</b>	1.6	no	no
Left	0.308	<b>0.668</b>	/	0.668	1.6	no	no
Right	/	/	<b>0.264</b>	0.264	1.6	no	no
Bottom	/	/	/	/	1.6	no	no
Top	0.294	<b>0.643</b>	<b>0.264</b>	0.907	1.6	no	no

## Simultaneous transmission SAR for BT and UMTS

Test Position	UMTS Band V Reported SAR1-g (W/kg)	UMTS Band II Reported SAR1-g (W/kg)	BT Estimated SAR1-g (W/kg)	MAX. $\Sigma$ SAR1-g (W/kg)	SAR1-g Limit (W/kg)	Peak location separation ratio	Simut Meas. Required
Front	/	/	/	/	1.6	no	no
Rear	0.309	<b>0.363</b>	<b>0.264</b>	<b>0.627</b>	1.6	no	no
Left	0.303	<b>0.354</b>	/	0.354	1.6	no	no
Right	/	/	<b>0.264</b>	0.264	1.6	no	no
Bottom	/	/	/	/	1.6	no	no
Top	0.291	<b>0.342</b>	<b>0.264</b>	0.606	1.6	no	no

## Simultaneous transmission SAR for BT and LTE

Reported SAR1-g(W/kg)	Test Position					
	Front	Rear	Left	Right	Bottom	Top
LTE Band2	/	0.305	0.290	/	/	0.275
LTE Band4	/	<b>0.436</b>	<b>0.424</b>	/	/	<b>0.406</b>
LTE Band7	/	0.281	0.262	/	/	0.245
BT Estimated SAR1-g (W/kg)	/	<b>0.264</b>	/	<b>0.264</b>	/	<b>0.264</b>
MAX. $\Sigma$ SAR1-g (W/kg)	/	<b>0.700</b>	0.424	0.264	/	0.670
SAR1-g Limit (W/kg)	1.6	1.6	1.6	1.6	1.6	1.6
Peak location separation ratio	no	no	no	no	no	no
Simut Meas. Required	no	no	no	no	no	no

Note:

1. The WiFi and BT share same antenna, so cannot transmit at same time.
2. The value with **block** color is the maximum values of standalone





3. The value with blue color is the maximum values of  $\sum SAR_{1-g}$

#### 4.5. SAR Measurement Variability

According to KDB865664, Repeated measurements are required only when the measured SAR is  $\geq 0.80$  W/kg. If the measured SAR value of the initial repeated measurement is  $< 1.45$  W/kg with  $\leq 20\%$  variation, only one repeated measurement is required to reaffirm that the results are not expected to have substantial variations, which may introduce significant compliance concerns. A second repeated measurement is required only if the measured result for the initial repeated measurement is within 10% of the SAR limit and vary by more than 20%, which are often related to device and measurement setup difficulties. The following procedures are applied to determine if repeated measurements are required. The same procedures should be adapted for measurements according to extremity and occupational exposure limits by applying a factor of 2.5 for extremity exposure and a factor of 5 for occupational exposure to the corresponding SAR thresholds.<sup>19</sup> The repeated measurement results must be clearly identified in the SAR report. All measured SAR, including the repeated results, must be considered to determine compliance and for reporting according to KDB 690783. Repeated measurement is not required when the original highest measured SAR is  $< 0.80$  W/kg; steps 2) through 4) do not apply.

- 3) When the original highest measured SAR is  $\geq 0.80$  W/kg, repeat that measurement once.
- 4) Perform a second repeated measurement only if the ratio of largest to smallest SAR for the original and first repeated measurements is  $> 1.20$  or when the original or repeated measurement is  $\geq 1.45$  W/kg ( $\sim 10\%$  from the 1-g SAR limit).
- 5) Perform a third repeated measurement only if the original, first or second repeated measurement is  $\geq 1.5$  W/kg and the ratio of largest to smallest SAR for the original, first and second repeated measurements is  $> 1.20$ .
- 6) Perform a third repeated measurement only if the original, first or second repeated measurement is  $\geq 1.5$  W/kg and the ratio of largest to smallest SAR for the original, first and second repeated measurements is  $> 1.20$ .

Frequency Band (MHz)	Air Interface	RF Exposure Configuration	Test Position	Repeated SAR (yes/no)	Highest Measured $SAR_{1-g}$ (W/Kg)	First Repeated	
						Measured $SAR_{1-g}$ (W/Kg)	Largest to Smallest SAR Ratio
850	GSM 850	Standalone	Body-Rear	no	0.313	n/a	n/a
	WCDMA Band V	Standalone	Body-Rear	no	0.302	n/a	n/a
1800	LTE Band 4	Standalone	Body-Rear	no	0.393	n/a	n/a
1900	GSM 1900	Standalone	Body-Rear	no	0.638	n/a	n/a
	WCDMA Band II	Standalone	Body-Rear	no	0.360	n/a	n/a
	LTE Band 2	Standalone	Body-Rear	no	0.280	n/a	n/a
2450	2.4GWLAN	Standalone	Body-Rear	no	0.371	n/a	n/a
2600	LTE Band 7	Standalone	Body-Rear	no	0.265	n/a	n/a
5200	5.2GWLAN	Standalone	Body-Rear	no	0.299	n/a	n/a
5800	5.8GWLAN	Standalone	Body-Rear	no	0.220	n/a	n/a

Remark:

1. Second Repeated Measurement is not required since the ratio of the largest to smallest SAR for the original and first repeated measurement is not  $> 1.20$  or 3 (1-g or 10-g respectively)

#### 4.6. General description of test procedures

1. Test positions as described in the tables above are in accordance with the specified test standard.
2. Tests in body position were performed in that configuration, which generates the highest time based averaged output power (see conducted power results).
3. According to IEEE 1528 the SAR test shall be performed at middle channel. Testing of top and bottom channel is optional.
4. According to KDB 447498 D01 testing of other required channels within the operating mode of a frequency band is not required when the reported 1-g or 10-g SAR for the mid-band or highest output power channel is:
  - $\leq 0.8$  W/kg or 2.0 W/kg, for 1-g or 10-g respectively, when the transmission band is  $\leq 100$  MHz
  - $\leq 0.6$  W/kg or 1.5 W/kg, for 1-g or 10-g respectively, when the transmission band is between 100 MHz and 200 MHz
  - $\leq 0.4$  W/kg or 1.0 W/kg, for 1-g or 10-g respectively, when the transmission band is  $\geq 200$  MHz
5. IEEE 1528-2003 require the middle channel to be tested first. This generally applies to wireless devices that are designed to operate in technologies with tight tolerances for maximum output power



variations across channels in the band. When the maximum output power variation across the required test channels is  $> \frac{1}{2}$  dB, instead of the middle channel, the highest output power channel must be used.

6. When the same maximum output power is specified for both bands, begin SAR measurement in U-NII-2A band by applying the OFDM SAR requirements.<sup>19</sup> If the highest reported SAR for a test configuration is  $\leq 1.2$  W/kg, SAR is not required for U-NII-1 band for that configuration (802.11 mode and exposure condition); otherwise, each band is tested independently for SAR.
7. When different maximum output power is specified for the bands, begin SAR measurement in the band with higher specified maximum output power. The highest reported SAR for the tested configuration is adjusted by the ratio of lower to higher specified maximum output power for the two bands. When the adjusted SAR is  $\leq 1.2$  W/kg, SAR is not required for the band with lower maximum output power in that test configuration; otherwise, each band is tested independently for SAR.

#### **4.7. Measurement Uncertainty (450MHz-6GHz)**

Not required as SAR measurement uncertainty analysis is required in SAR reports only when the highest measured SAR in a frequency band is  $\geq 1.5$  W/kg for 1-g SAR according to KDB865664D01.





#### 4.8. System Check Results

Test mode:835MHz(Head)

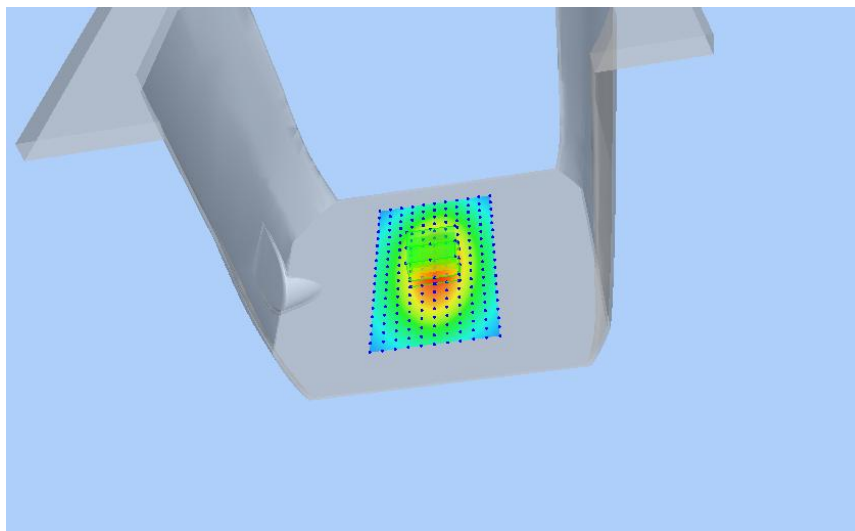
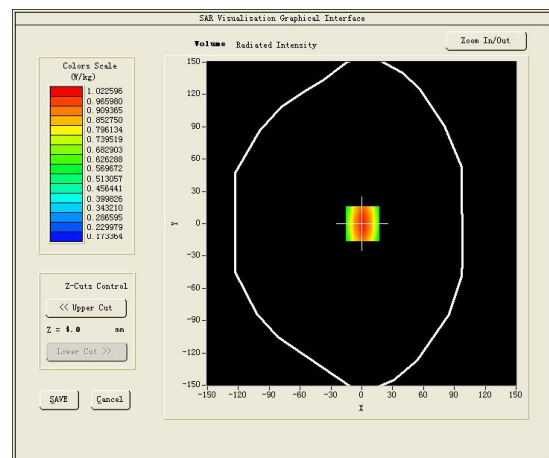
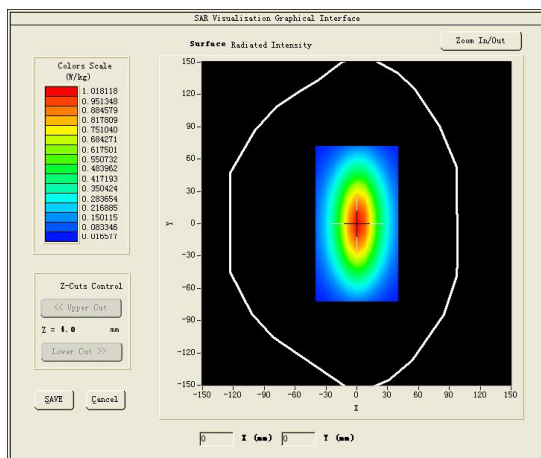
Product Description:Validation

Model:Dipole SID835

E-Field Probe:SSE2(SN 31/17 EPGO324)

Test Date: June 20, 2022

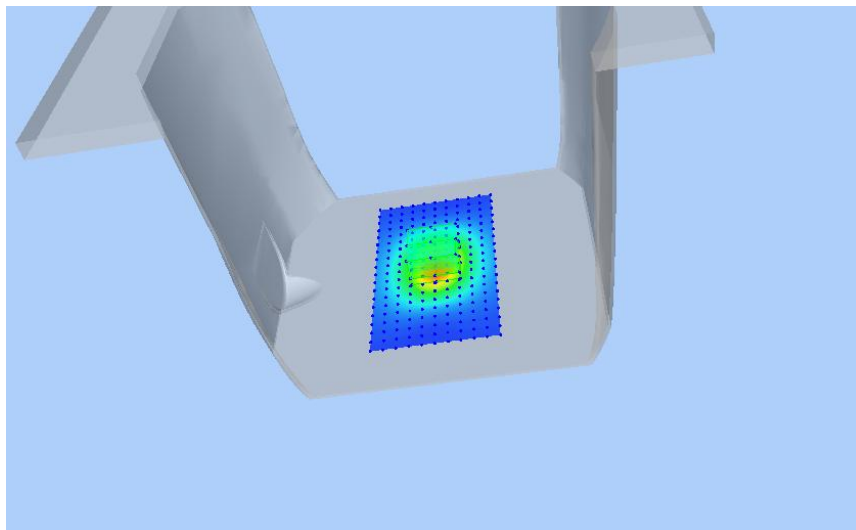
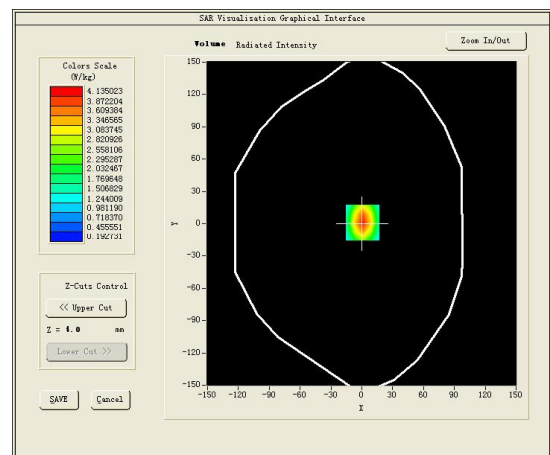
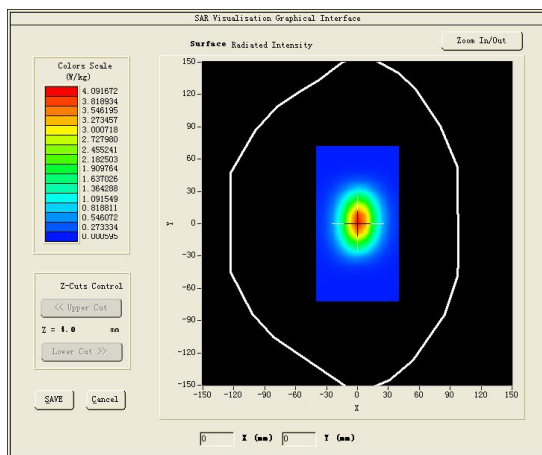
Medium(liquid type)	HSL_850
Frequency (MHz)	835.0000
Relative permittivity (real part)	42.82
Conductivity (S/m)	0.92
Input power	100mW
Crest Factor	1.0
Conversion Factor	1.55
Variation (%)	2.030000
SAR 10g (W/Kg)	0.639132
SAR 1g (W/Kg)	0.923488
<b>SURFACE SAR</b>	<b>VOLUME SAR</b>





Test mode:1800MHz(Head)  
Product Description:Validation  
Model :Dipole SID1800  
E-Field Probe:SSE2(SN 31/17 EPG0324)  
Test Date: June 22, 2022

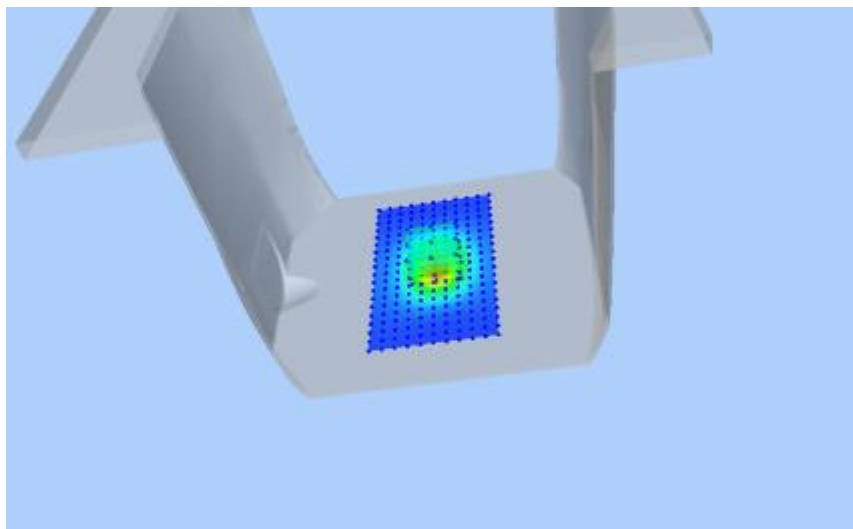
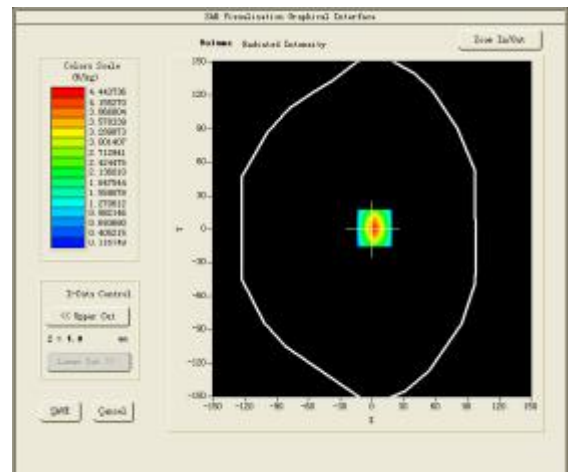
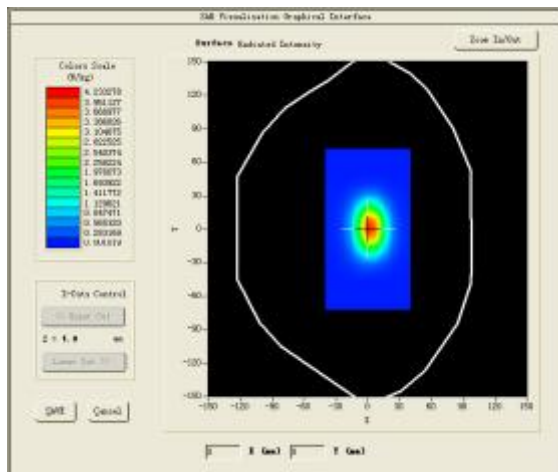
Medium(liquid type)	HSL_1800
Frequency (MHz)	1800.0000
Relative permittivity (real part)	52.11
Conductivity (S/m)	1.56
Input power	100mW
Crest Factor	1.0
Conversion Factor	1.65
Variation (%)	1.620000
SAR 10g (W/Kg)	2.055283
SAR 1g (W/Kg)	3.853085
<b>SURFACE SAR</b>	<b>VOLUME SAR</b>





Test mode:1900MHz(Head)  
Product Description:Validation  
Model :Dipole SID1900  
E-Field Probe:SSE2(SN 31/17 EPGO324)  
Test Date: June 24, 2022

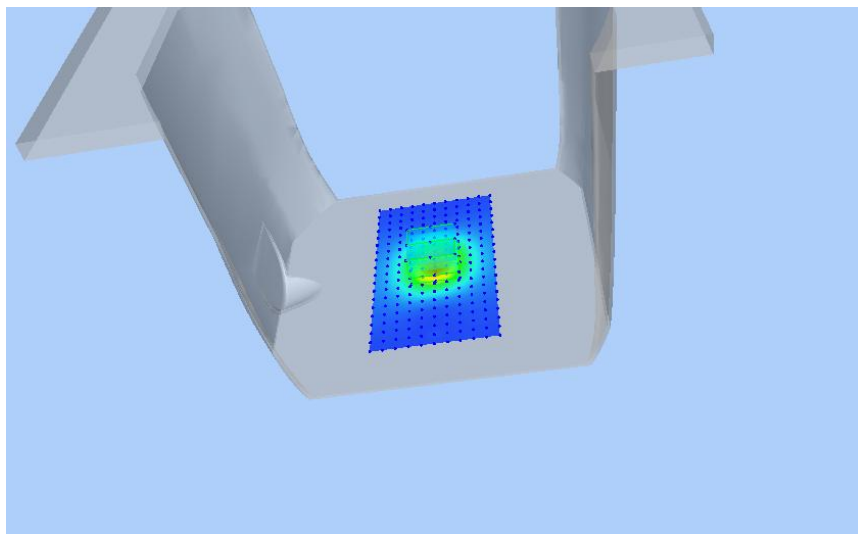
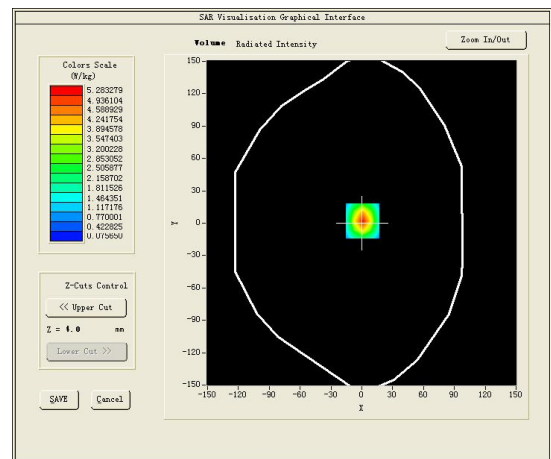
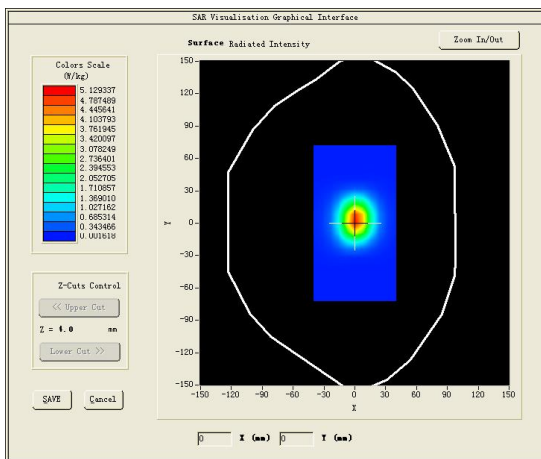
Medium(liquid type)	HSL_1900
Frequency (MHz)	1900.0000
Relative permittivity (real part)	38.56
Conductivity (S/m)	1.37
Input power	100mW
Crest Factor	1.0
Conversion Factor	1.86
Variation (%)	-1.200000
SAR 10g (W/Kg)	2.096260
SAR 1g (W/Kg)	3.911162
<b>SURFACE SAR</b>	<b>VOLUME SAR</b>





Test mode:2450MHz(Head)  
Product Description:Validation  
Model:Dipole SID2450  
E-Field Probe:SSE2(SN 31/17 EPGO324)  
Test Date: June 27, 2022

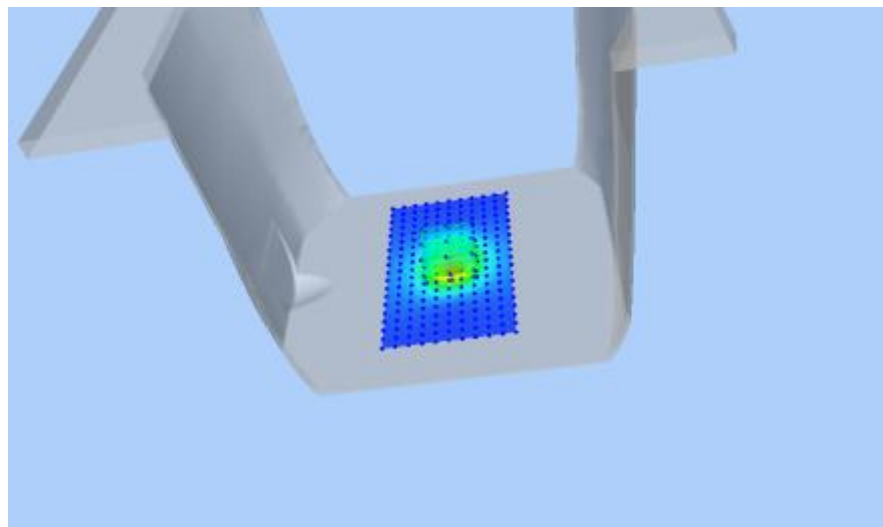
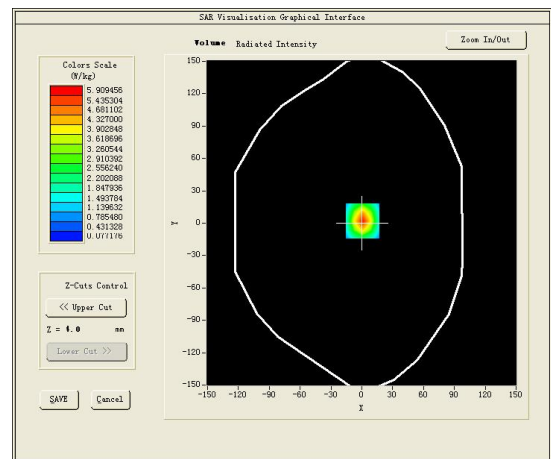
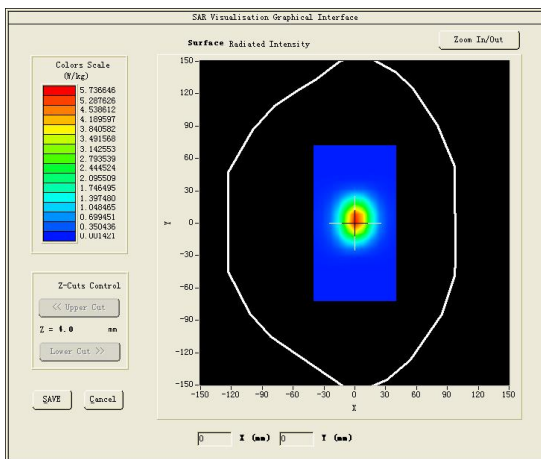
Medium(liquid type)	HSL_2450
Frequency (MHz)	2450.0000
Relative permittivity (real part)	39.70
Conductivity (S/m)	1.84
Input power	100mW
Crest Factor	1.0
Conversion Factor	1.91
Variation (%)	-0.080000
SAR 10g (W/Kg)	2.521463
SAR 1g (W/Kg)	5.487016
<b>SURFACE SAR</b>	<b>VOLUME SAR</b>





Test mode:2600MHz  
Product Description:Validation  
Model:Dipole SID2600  
E-Field Probe: SSE2(SN 31/17 EPGO324)  
Test Date: June 30, 2022

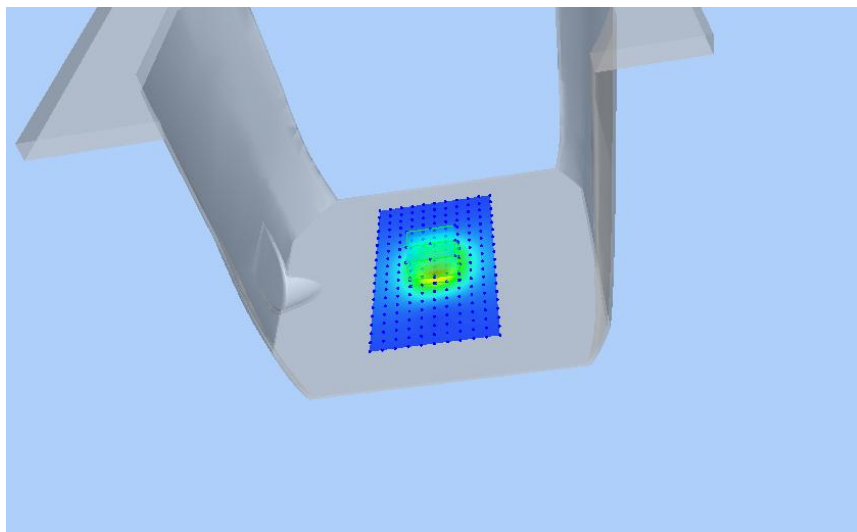
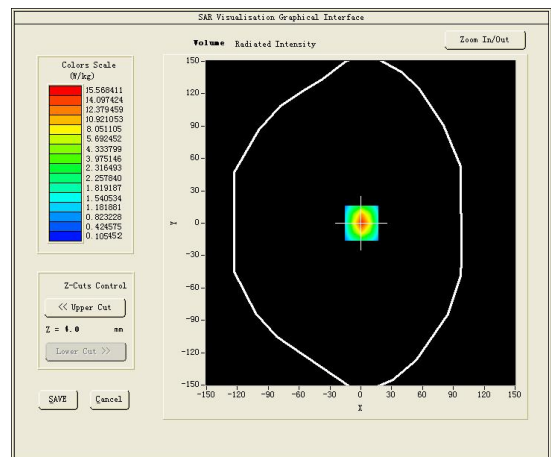
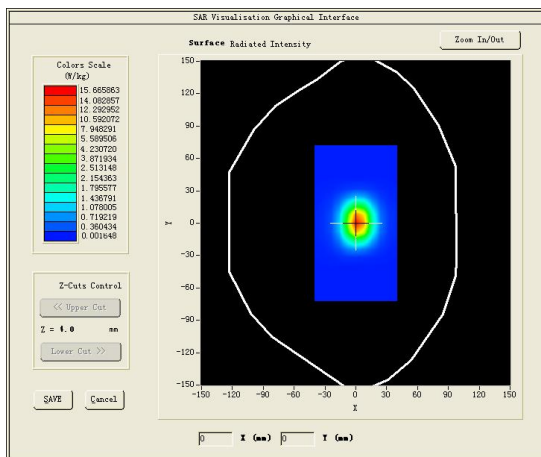
Medium(liquid type)	HSL_2600
Frequency (MHz)	2600.0000
Relative permittivity (real part)	38.43
Conductivity (S/m)	1.92
Input power	100mW
Crest Factor	1.0
Conversion Factor	1.89
Variation (%)	3.140000
SAR 10g (W/Kg)	2.246235
SAR 1g (W/Kg)	5.747023
<b>SURFACE SAR</b>	<b>VOLUME SAR</b>





Test mode:5200MHz(Head)  
Product Description:Validation  
Model:Dipole SID5000  
E-Field Probe: SSE2(SN 31/17 EPGO324)  
Test Date: July 04, 2022

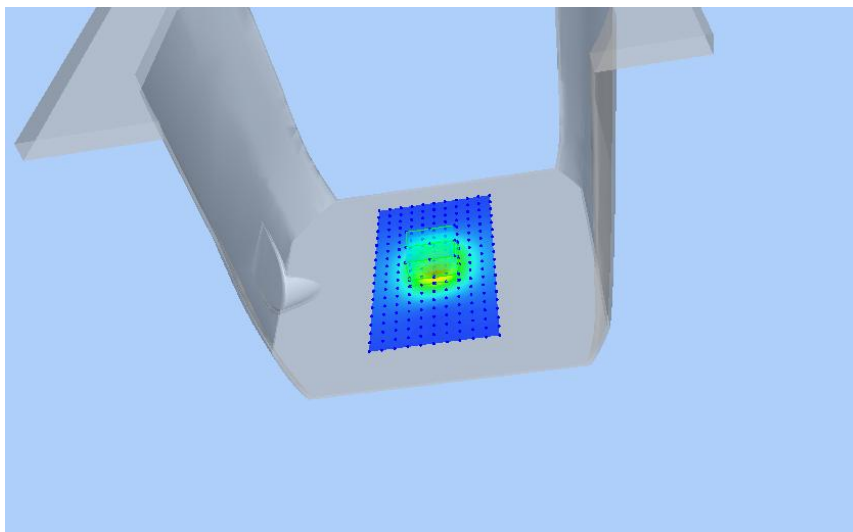
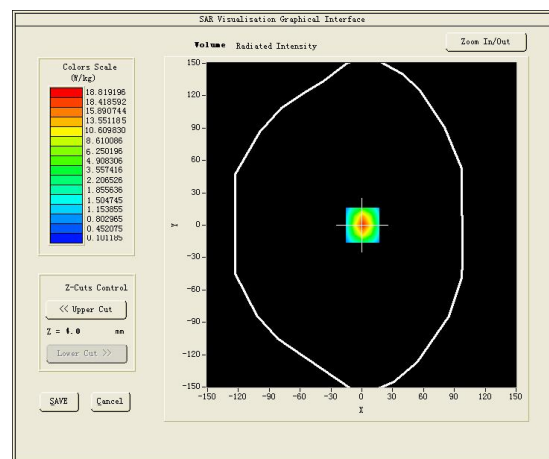
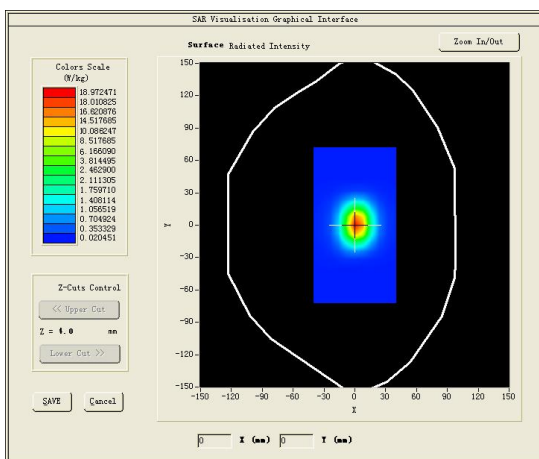
Medium(liquid type)	HSL_5000
Frequency (MHz)	5200.0000
Relative permittivity (real part)	48.80
Conductivity (S/m)	4.66
Input power	100mW
Crest Factor	1.0
Conversion Factor	1.50
Variation (%)	-3.020000
SAR 10g (W/Kg)	5.512210
SAR 1g (W/Kg)	15.467034
<b>SURFACE SAR</b>	<b>VOLUME SAR</b>





Test mode:5800MHz(Head)  
Product Description:Validation  
Model:Dipole SID5000  
E-Field Probe: SSE2(SN 31/17 EPGO324)  
Test Date:July 06, 2022

Medium(liquid type)	HSL_5000
Frequency (MHz)	5800.0000
Relative permittivity (real part)	48.46
Conductivity (S/m)	5.27
Input power	100mW
Crest Factor	1.0
Conversion Factor	1.50
Variation (%)	-1.010000
SAR 10g (W/Kg)	6.177085
SAR 1g (W/Kg)	18.293250
<b>SURFACE SAR</b>	<b>VOLUME SAR</b>







#### 4.9. SAR Test Graph Results

SAR plots for the highest measured SAR in each exposure configuration, wireless mode and frequency band combination

#1

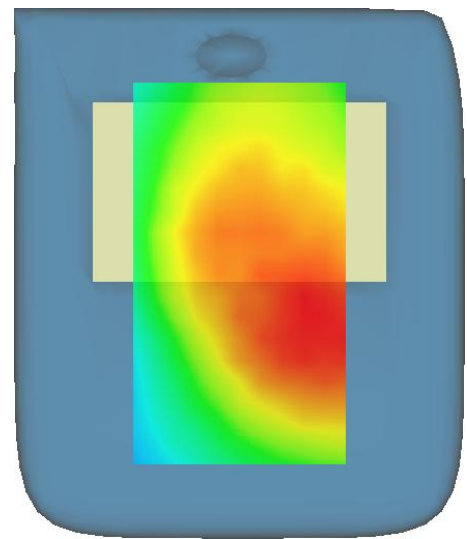
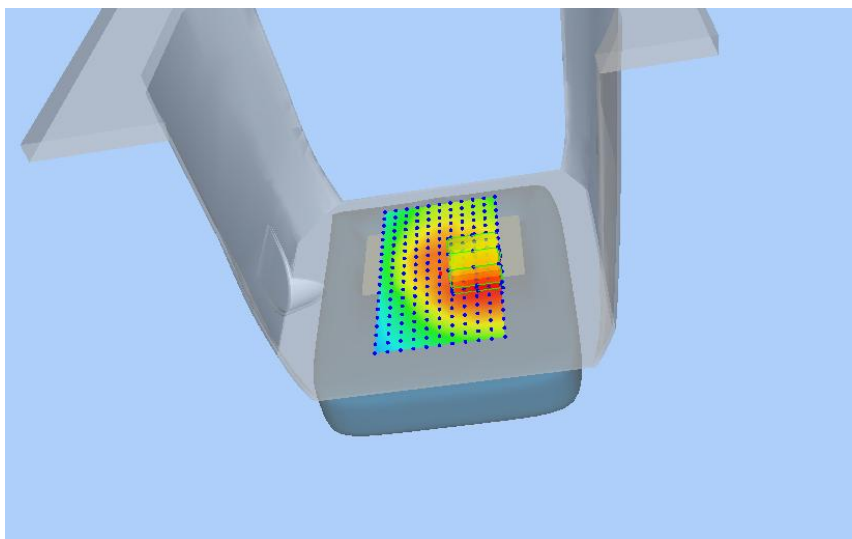
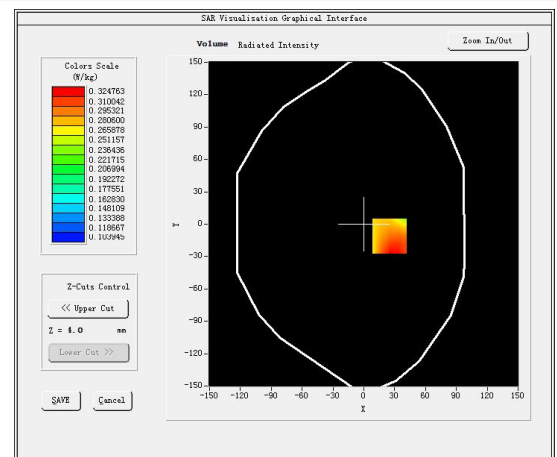
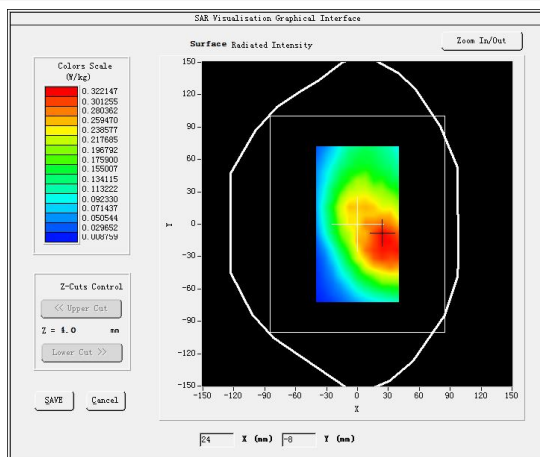
Test Mode: GSM850MHz, Middle channel(Body Rear Side)

Product Description:tablet

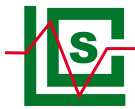
Model:B610A103A

Test Date: June 20, 2022

Medium(liquid type)	HSL 850
Frequency (MHz)	836.6000
Relative permittivity (real part)	41.23
Conductivity (S/m)	0.91
E-Field Probe	SN 31/17 EPG0324
Crest Factor	2.0
Conversion Factor	1.55
Sensor	4mm
Area Scan	dx=8mm dy=8mm
Zoom Scan	5x5x7,dx=8mm dy=8mm dz=5mm
Variation (%)	1.860000
SAR 10g (W/Kg)	0.252306
SAR 1g (W/Kg)	0.313417
SURFACE SAR	VOLUME SAR



#2



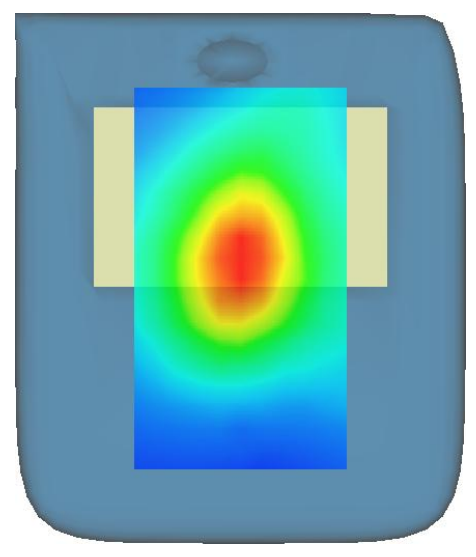
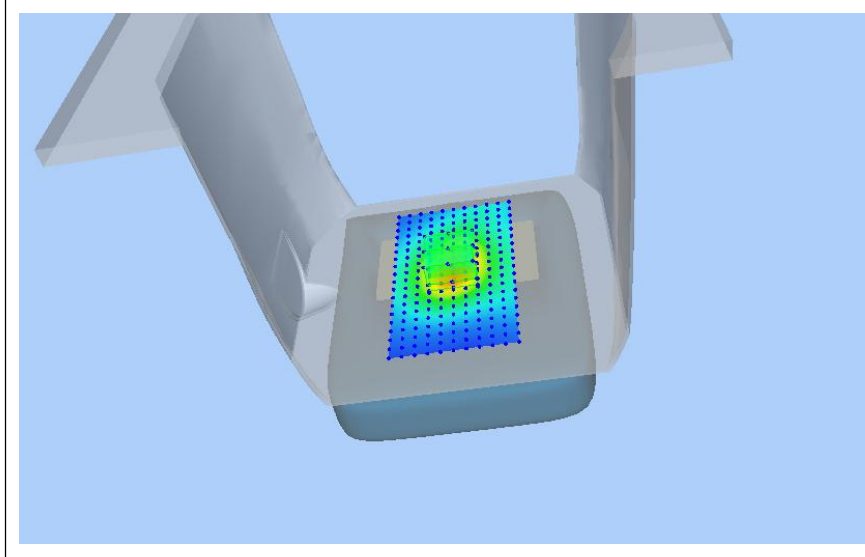
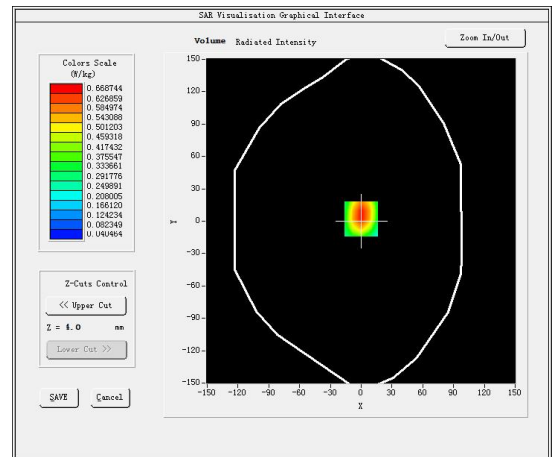
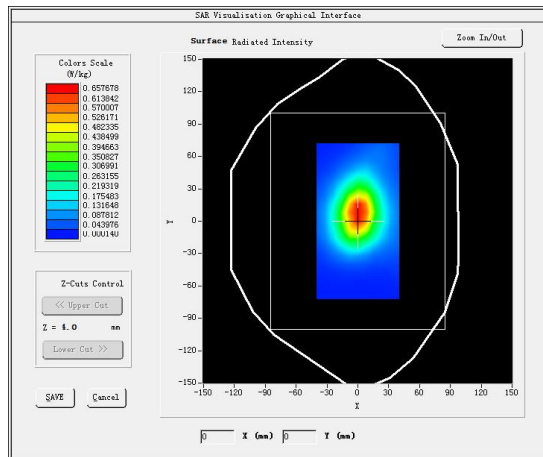
Test Mode: GPRS1900MHz,Middle channel(Body Rear Side)

Product Description:tablet

Model:B610A103A

Test Date: June 24, 2022

Medium(liquid type)	HSL 1900
Frequency (MHz)	1880.0000
Relative permittivity (real part)	40.75
Conductivity (S/m)	1.42
E-Field Probe	SN 31/17 EPGO324
Crest Factor	2.0
Conversion Factor	1.86
Sensor	4mm
Area Scan	dx=8mm dy=8mm
Zoom Scan	5x5x7,dx=8mm dy=8mm dz=5mm
Variation (%)	-0.250000
SAR 10g (W/Kg)	0.364682
SAR 1g (W/Kg)	0.638162
<b>SURFACE SAR</b>	<b>VOLUME SAR</b>





#3

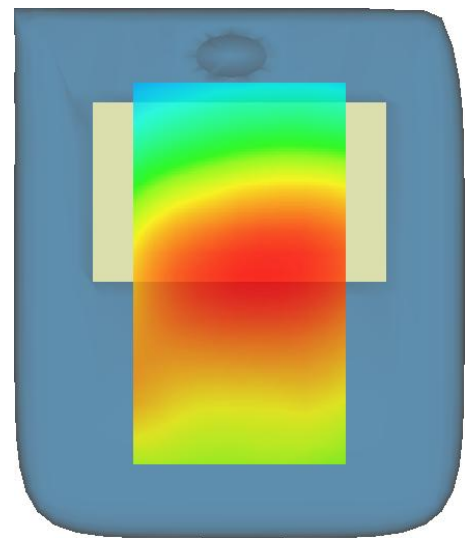
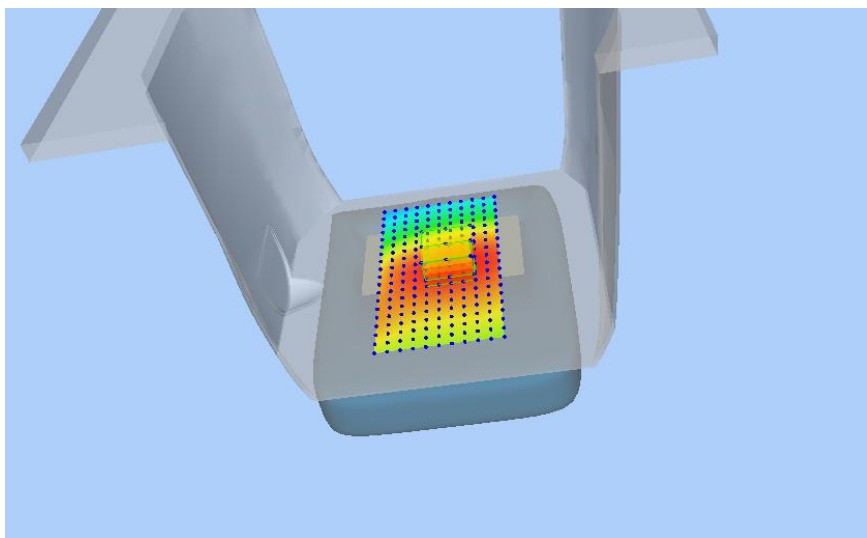
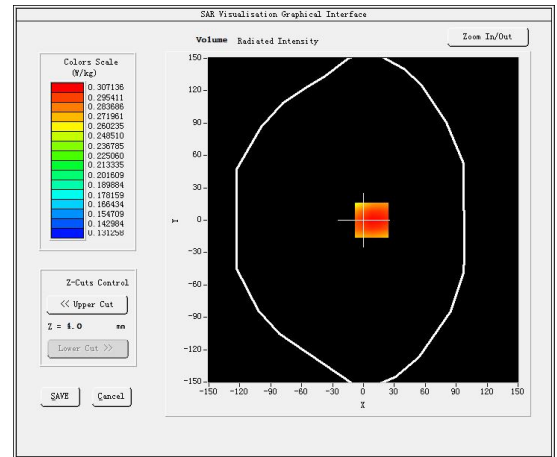
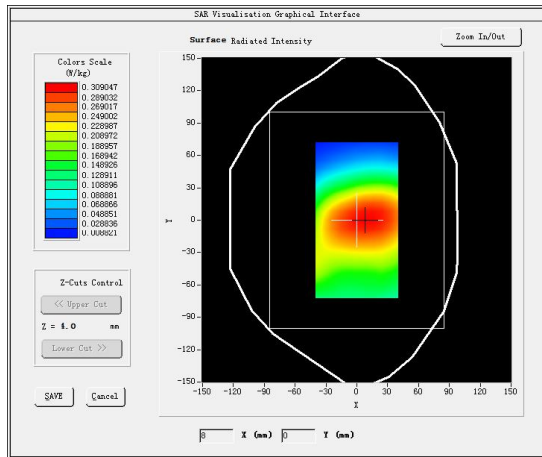
Test Mode: WCDMA Band V, Low channel(Body Rear Side)

Product Description:tablet

Model:B610A103A

Test Date: June 20, 2022

Medium(liquid type)	HSL_850
Frequency (MHz)	826.4000
Relative permittivity (real part)	40.23
Conductivity (S/m)	0.89
E-Field Probe	SN 31/17 EPG0324
Crest Factor	1.0
Conversion Factor	1.55
Sensor	4mm
Area Scan	dx=8mm dy=8mm
Zoom Scan	5x5x7,dx=8mm dy=8mm dz=5mm
Variation (%)	-0.880000
SAR 10g (W/Kg)	0.250286
SAR 1g (W/Kg)	0.301823
<b>SURFACE SAR</b>	<b>VOLUME SAR</b>





#4

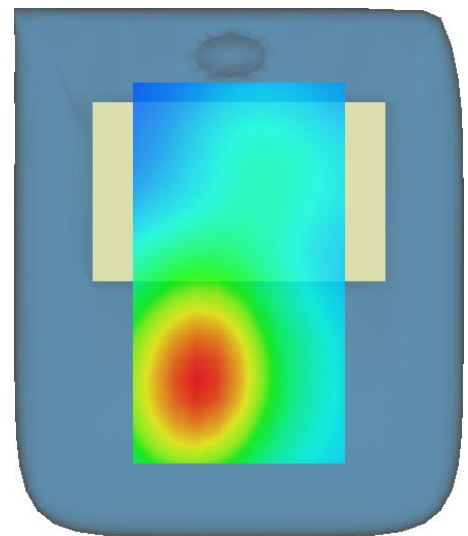
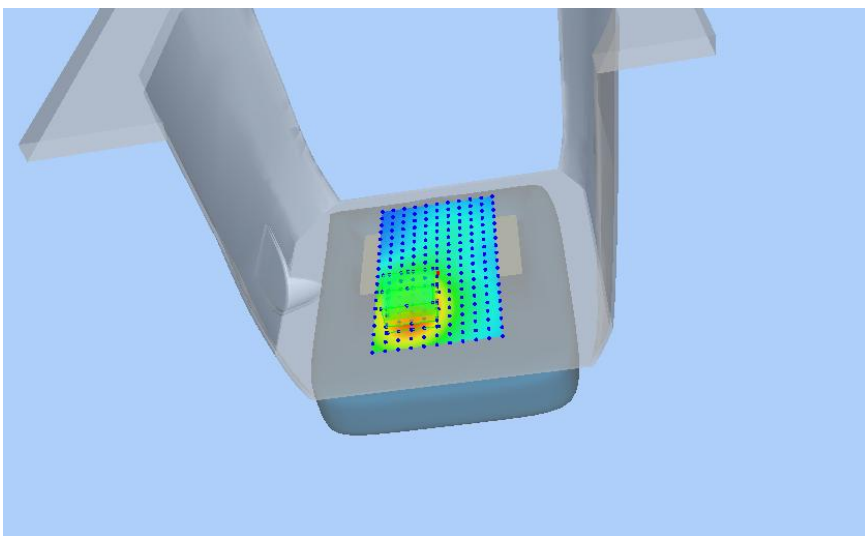
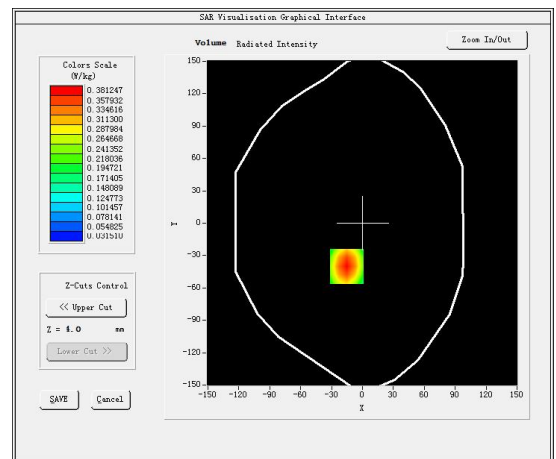
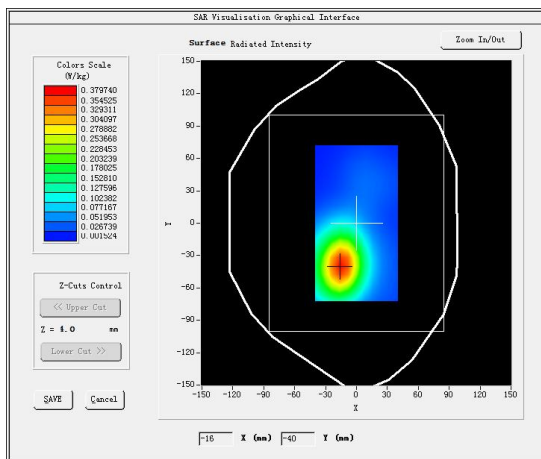
Test Mode: WCDMA Band II, Middle channel(Body Rear Side)

Product Description:tablet

Model:B610A103A

Test Date: June 24, 2022

Medium(liquid type)	HSL 1900
Frequency (MHz)	1880.0000
Relative permittivity (real part)	39.25
Conductivity (S/m)	1.43
E-Field Probe	SN 31/17 EPG0324
Crest Factor	1.0
Conversion Factor	1.86
Sensor	4mm
Area Scan	dx=8mm dy=8mm
Zoom Scan	5x5x7,dx=8mm dy=8mm dz=5mm
Variation (%)	0.670000
SAR 10g (W/Kg)	0.217402
SAR 1g (W/Kg)	0.359785
<b>SURFACE SAR</b>	<b>VOLUME SAR</b>





#5

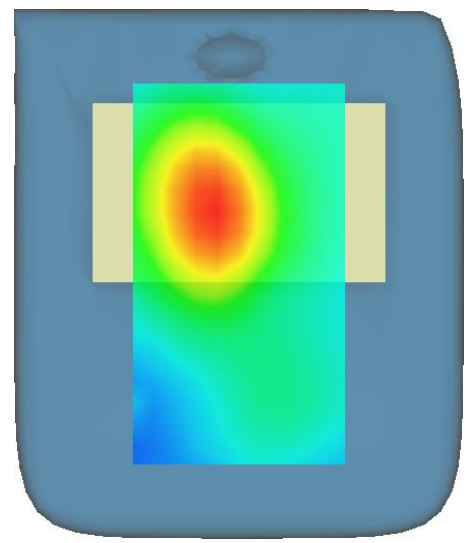
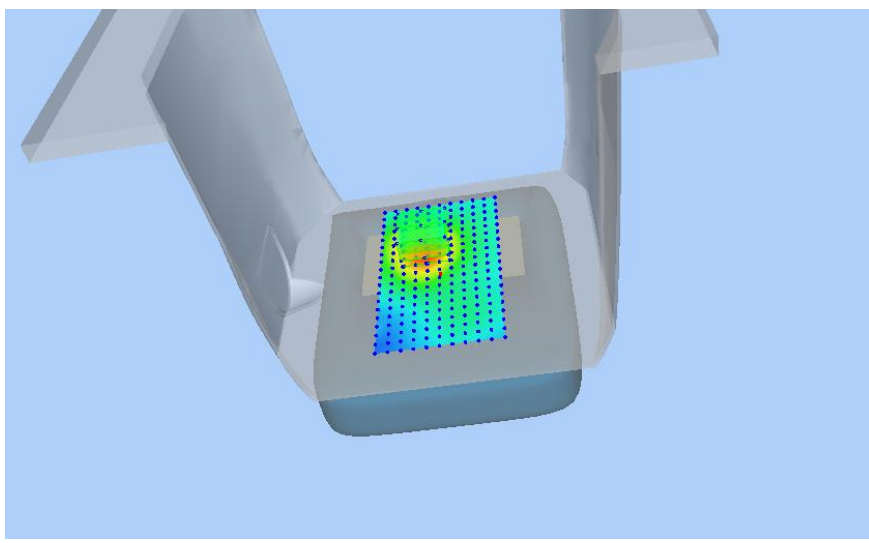
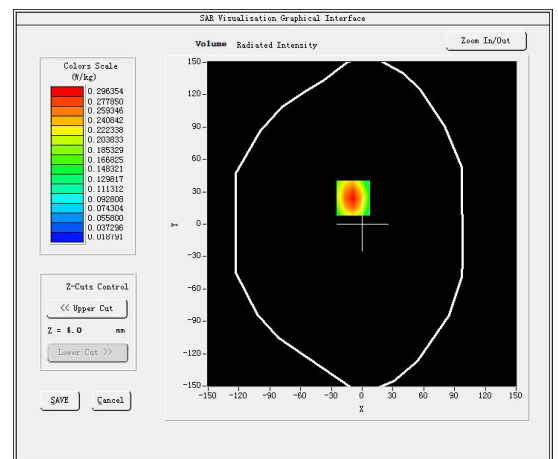
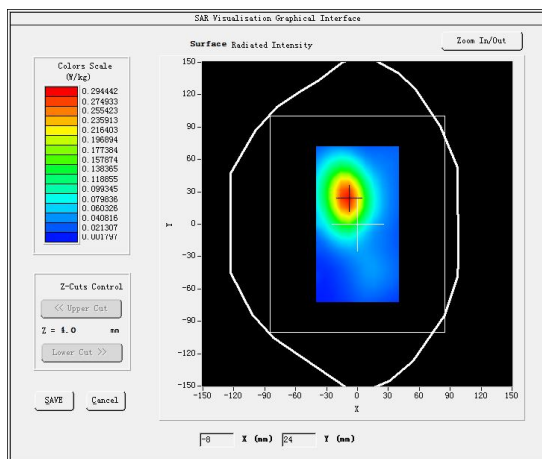
Test Mode: LTE Band 2, 1RB, High channel (Body Rear Side)

Product Description: tablet

Model: B610A103A

Test Date: June 24, 2022

Medium (liquid type)	HSL 1900
Frequency (MHz)	1900.0000
Relative permittivity (real part)	40.22
Conductivity (S/m)	1.78
E-Field Probe	SN 31/17 EPG0324
Crest Factor	1.0
Conversion Factor	1.86
Sensor	4mm
Area Scan	dx=8mm dy=8mm
Zoom Scan	5x5x7, dx=8mm dy=8mm dz=5mm
Variation (%)	-0.090000
SAR 10g (W/Kg)	0.165127
SAR 1g (W/Kg)	0.279502
<b>SURFACE SAR</b>	<b>VOLUME SAR</b>





#6

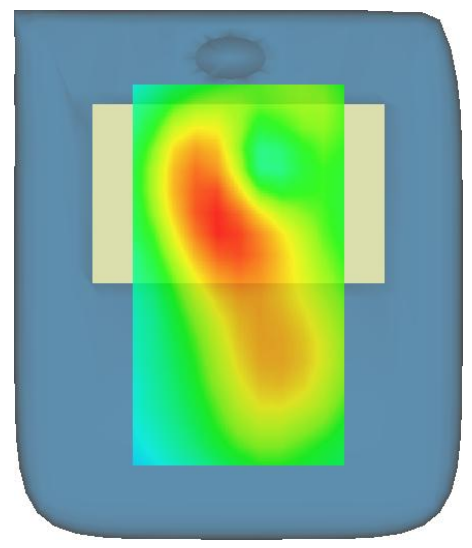
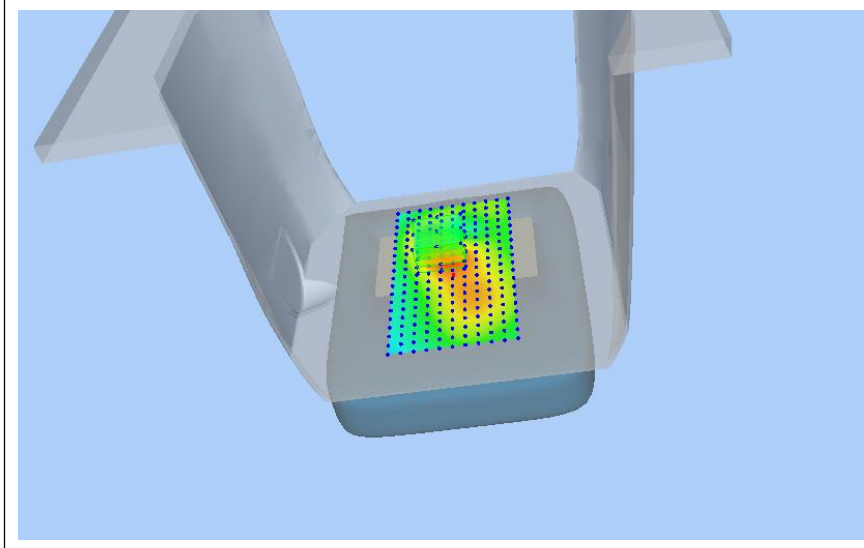
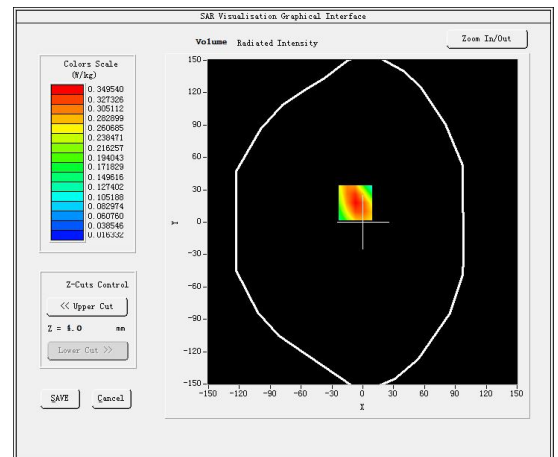
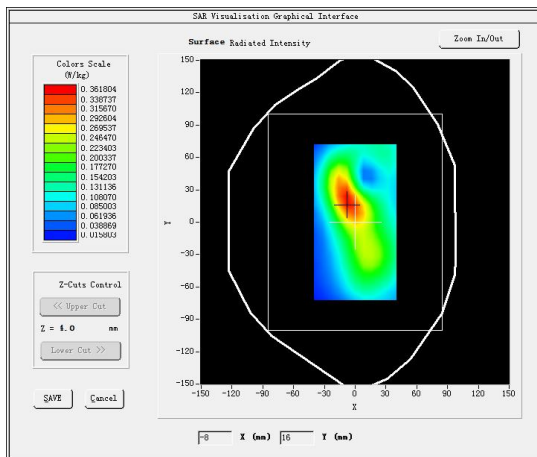
Test Mode: LTE Band 4, 1RB,Middle channel(Body Rear Side)

Product Description:tablet

Model:B610A103A

Test Date: June 22, 2022

Medium(liquid type)	HSL_1800
Frequency (MHz)	1732.5000
Relative permittivity (real part)	40.74
Conductivity (S/m)	1.38
E-Field Probe	SN 31/17 EPGO324
Crest Factor	1.0
Conversion Factor	1.65
Sensor	4mm
Area Scan	dx=8mm dy=8mm
Zoom Scan	5x5x7,dx=8mm dy=8mm dz=5mm
Variation (%)	2.150000
SAR 10g (W/Kg)	0.225868
SAR 1g (W/Kg)	0.393037
<b>SURFACE SAR</b>	<b>VOLUME SAR</b>







#7

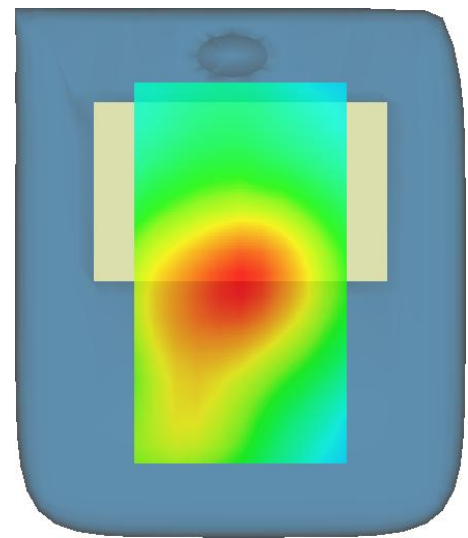
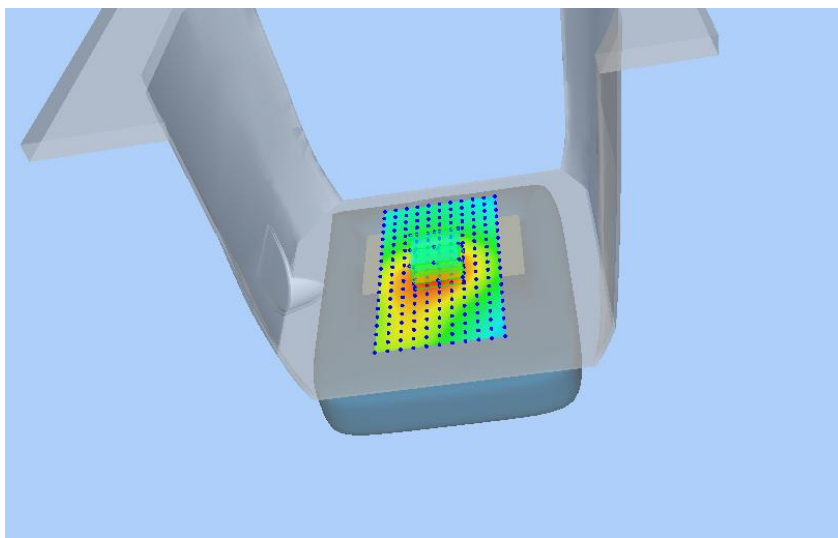
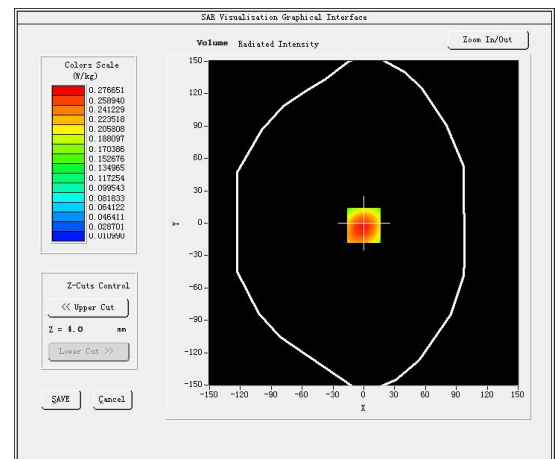
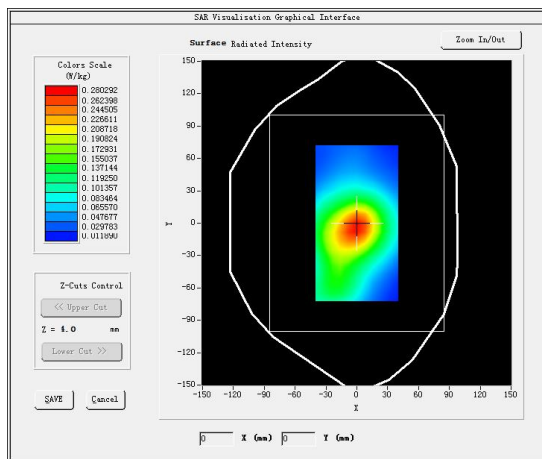
Test Mode: LTE Band 7, 1RB, High channel (Body Rear Side)

Product Description: tablet

Model: B610A103A

Test Date: June 30, 2022

Medium (liquid type)	HSL 2600
Frequency (MHz)	2560.0000
Relative permittivity (real part)	36.12
Conductivity (S/m)	4.70
E-Field Probe	SN 31/17 EPG0324
Crest Factor	1.0
Conversion Factor	1.89
Sensor	4mm
Area Scan	dx=8mm dy=8mm
Zoom Scan	5x5x7, dx=8mm dy=8mm dz=5mm
Variation (%)	-1.150000
SAR 10g (W/Kg)	0.145423
SAR 1g (W/Kg)	0.264565
<b>SURFACE SAR</b>	<b>VOLUME SAR</b>







#8

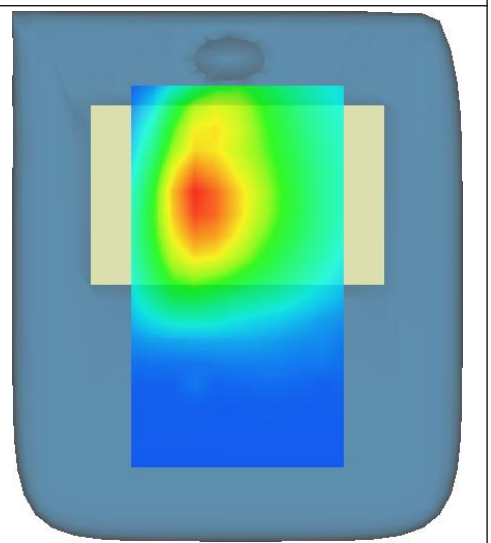
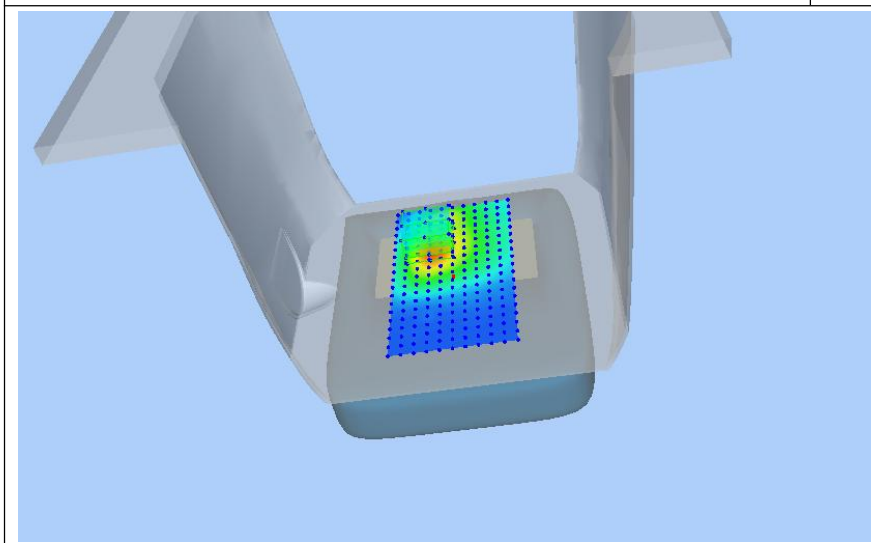
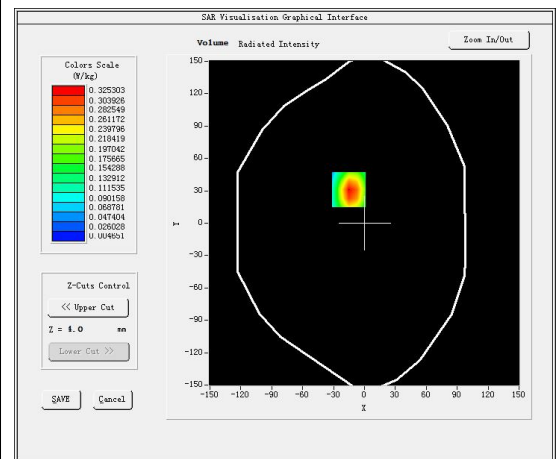
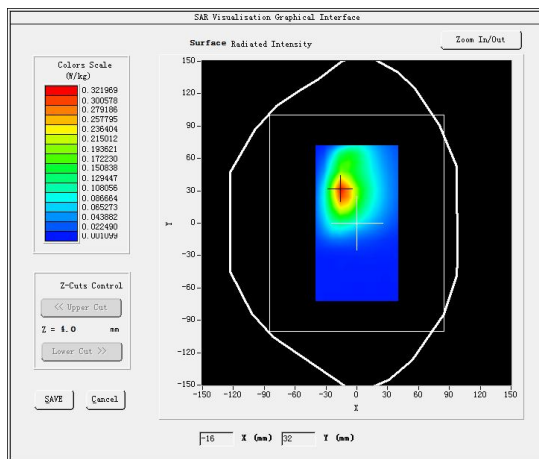
Test Mode: 802.11n HT20 (WiFi2.4G),High channel(Body Rear Side)

Product Description:tablet

Model:B610A103A

Test Date: June 27, 2022

Medium(liquid type)	HSL 2450
Frequency (MHz)	2462.0000
Relative permittivity (real part)	40.03
Conductivity (S/m)	1.79
E-Field Probe	SN 31/17 EPGO324
Crest Factor	1.0
Conversion Factor	1.91
Sensor	4mm
Area Scan	dx=8mm dy=8mm
Zoom Scan	5x5x7,dx=8mm dy=8mm dz=5mm
Variation (%)	-0.130000
SAR 10g (W/Kg)	0.171128
SAR 1g (W/Kg)	0.371384
<b>SURFACE SAR</b>	<b>VOLUME SAR</b>





#9

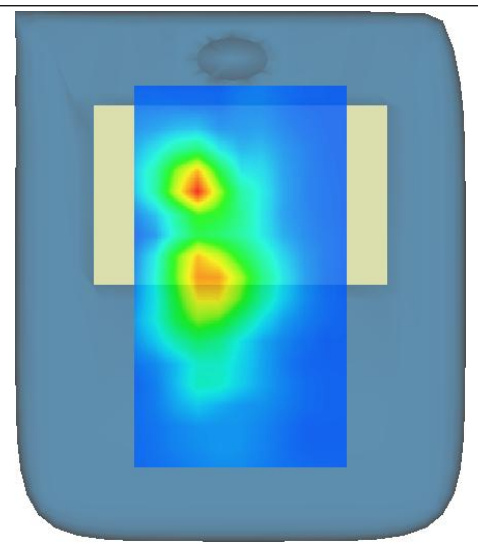
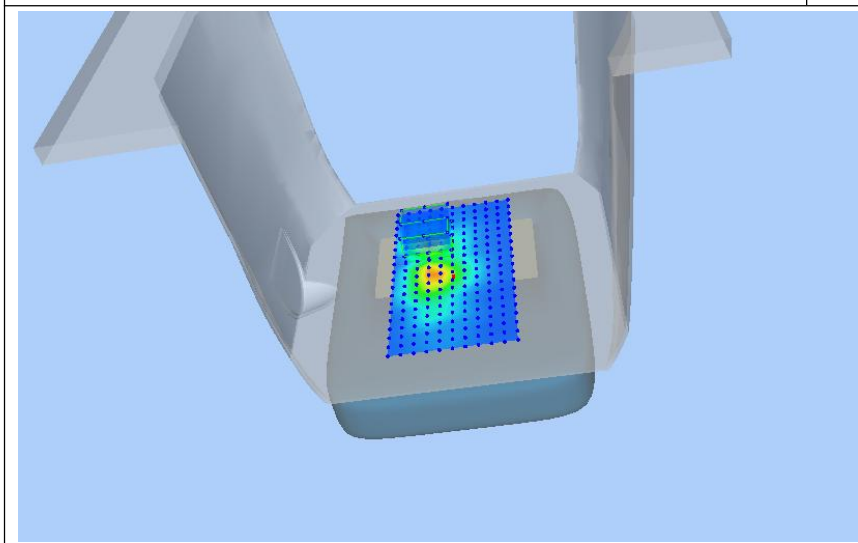
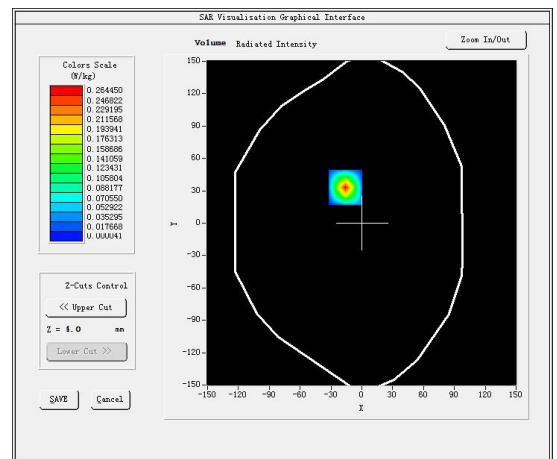
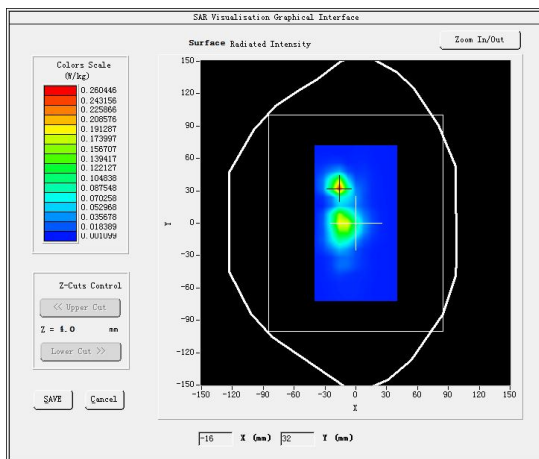
Test Mode: 802.11a(WiFi5.2G), Middle channel (Body Rear Side)

Product Description:tablet

Model:B610A103A

Test Date: July 04, 2022

Medium(liquid type)	HSL 5200
Frequency (MHz)	5200.0000
Relative permittivity (real part)	49.05
Conductivity (S/m)	5.36
E-Field Probe	SN 31/17 EPGO324
Crest Factor	1.0
Conversion Factor	1.50
Sensor	4mm
Area Scan	dx=8mm dy=8mm
Zoom Scan	5x5x7,dx=8mm dy=8mm dz=5mm
Variation (%)	-0.440000
SAR 10g (W/Kg)	0.091573
SAR 1g (W/Kg)	0.299333
<b>SURFACE SAR</b>	<b>VOLUME SAR</b>





#10

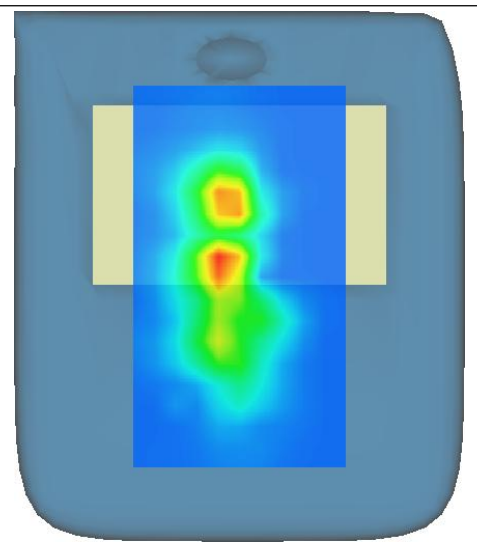
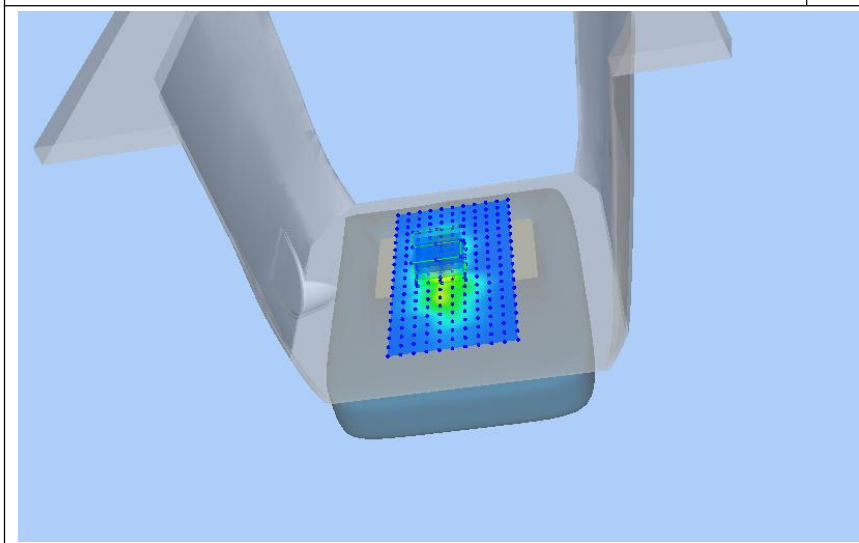
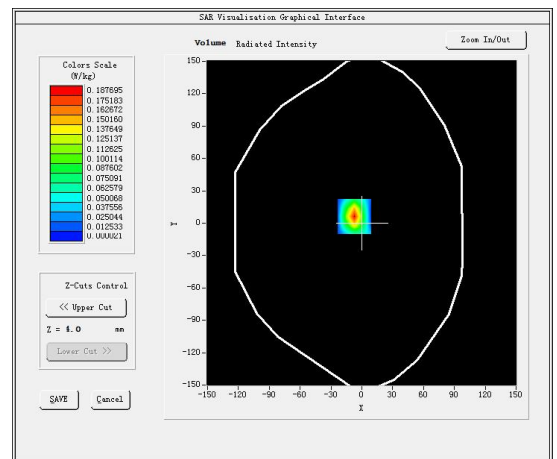
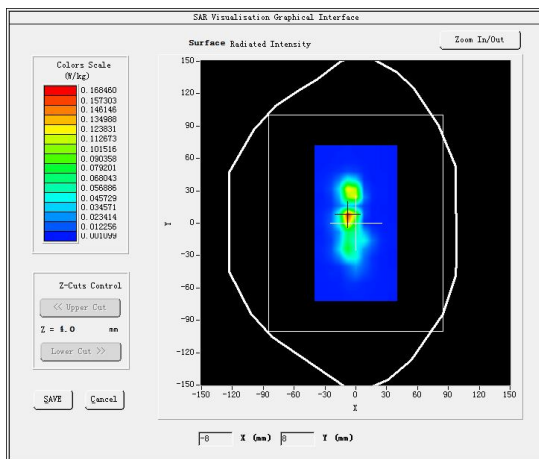
Test Mode: 802.11AC80 (WiFi5.8G), Low channel (Body Rear Side)

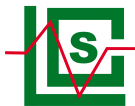
Product Description: tablet

Model: B610A103A

Test Date: July 06, 2022

Medium(liquid type)	HSL 5800
Frequency (MHz)	5775.0000
Relative permittivity (real part)	48.26
Conductivity (S/m)	5.97
E-Field Probe	SN 31/17 EPGO324
Crest Factor	1.0
Conversion Factor	1.50
Sensor	4mm
Area Scan	dx=8mm dy=8mm
Zoom Scan	5x5x7, dx=8mm dy=8mm dz=5mm
Variation (%)	-0.670000
SAR 10g (W/Kg)	0.069425
SAR 1g (W/Kg)	0.219803
<b>SURFACE SAR</b>	<b>VOLUME SAR</b>





## 5. CALIBRATION CERTIFICATES

### 5.1 Probe-EPGO324 Calibration Certificate



#### COMOSAR E-Field Probe Calibration Report

Ref: ACR.281.2.18.SATU.A

#### **SHENZHEN LCS COMPLIANCE TESTING LABORATORY LTD.**

**1F., XINGYUAN INDUSTRIAL PARK, TONGDA ROAD,  
BAO'AN BLVD  
BAO'AN DISTRICT, SHENZHEN, GUANGDONG, CHINA  
MVG COMOSAR DOSIMETRIC E-FIELD PROBE  
SERIAL NO.: SN 31/17 EPG0324**

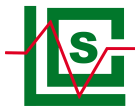
**Calibrated at MVG US  
2105 Barrett Park Dr. - Kennesaw, GA 30144**



**Calibration Date: 10/06/2021**

#### *Summary:*

This document presents the method and results from an accredited COMOSAR Dosimetric E-Field Probe calibration performed in MVG USA using the CALISAR / CALIBAIR test bench, for use with a COMOSAR system only. All calibration results are traceable to national metrology institutions.



## COMOSAR E-FIELD PROBE CALIBRATION REPORT

Ref: ACR.281.2.18.SATU.A

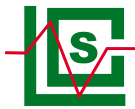
	<i>Name</i>	<i>Function</i>	<i>Date</i>	<i>Signature</i>
<i>Prepared by :</i>	Jérôme LUC	Product Manager	10/6/2021	<i>JS</i>
<i>Checked by :</i>	Jérôme LUC	Product Manager	10/6/2021	<i>JS</i>
<i>Approved by :</i>	Kim RUTKOWSKI	Quality Manager	10/6/2021	<i>Kim Rutkowski</i>

	<i>Customer Name</i>
<i>Distribution :</i>	Shenzhen LCS Compliance Testing Laboratory Ltd.

<i>Issue</i>	<i>Date</i>	<i>Modifications</i>
A	10/6/2021	Initial release

Page: 2/10

This document shall not be reproduced, except in full or in part, without the written approval of MVG.  
The information contained herein is to be used only for the purpose for which it is submitted and is not to be released in whole or part without written approval of MVG.



COMOSAR E-FIELD PROBE CALIBRATION REPORT

Ref: ACR.281.2.18.SATU.A

TABLE OF CONTENTS

1	Device Under Test .....	4
2	Product Description .....	4
2.1	General Information .....	4
3	Measurement Method .....	4
3.1	Linearity .....	4
3.2	Sensitivity .....	5
3.3	Lower Detection Limit .....	5
3.4	Isotropy .....	5
3.5	Boundary Effect .....	5
4	Measurement Uncertainty .....	5
5	Calibration Measurement Results .....	6
5.1	Sensitivity in air .....	6
5.2	Linearity .....	7
5.3	Sensitivity in liquid .....	7
5.4	Isotropy .....	8
6	List of Equipment .....	10

Page: 3/10

*This document shall not be reproduced, except in full or in part, without the written approval of MVG.  
The information contained herein is to be used only for the purpose for which it is submitted and is not to  
be released in whole or part without written approval of MVG.*





## COMOSAR E-FIELD PROBE CALIBRATION REPORT

Ref: ACR.281.2.18.SATU.A

### 1 DEVICE UNDER TEST

Device Under Test	
Device Type	COMOSAR DOSIMETRIC E FIELD PROBE
Manufacturer	MVG
Model	SSL2
Serial Number	SN 31/17 EPG0324
Product Condition (new / used)	New
Frequency Range of Probe	0.15 GHz-6GHz
Resistance of Three Dipoles at Connector	Dipole 1: R1=0.189 MΩ Dipole 2: R2=0.203 MΩ Dipole 3: R3=0.218 MΩ

A yearly calibration interval is recommended.

### 2 PRODUCT DESCRIPTION

#### 2.1 GENERAL INFORMATION

MVG's COMOSAR E field Probes are built in accordance to the IEEE 1528, OET 65 Bulletin C and CEI/IEC 62209 standards.



Figure 1 – MVG COMOSAR Dosimetric E field Dipole

Probe Length	330 mm
Length of Individual Dipoles	2 mm
Maximum external diameter	8 mm
Probe Tip External Diameter	2.5 mm
Distance between dipoles / probe extremity	1 mm

### 3 MEASUREMENT METHOD

The IEEE 1528, OET 65 Bulletin C, CENELEC EN50361 and CEI/IEC 62209 standards provide recommended practices for the probe calibrations, including the performance characteristics of interest and methods by which to assess their affect. All calibrations / measurements performed meet the fore mentioned standards.

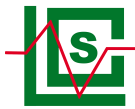
#### 3.1 LINEARITY

The evaluation of the linearity was done in free space using the waveguide, performing a power sweep to cover the SAR range 0.01W/kg to 100W/kg.

Page: 4/10

*This document shall not be reproduced, except in full or in part, without the written approval of MVG.  
The information contained herein is to be used only for the purpose for which it is submitted and is not to be released in whole or part without written approval of MVG.*





## COMOSAR E-FIELD PROBE CALIBRATION REPORT

Ref: ACR.281.2.18.SATU.A

### 3.2 SENSITIVITY

The sensitivity factors of the three dipoles were determined using a two step calibration method (air and tissue simulating liquid) using waveguides as outlined in the standards.

### 3.3 LOWER DETECTION LIMIT

The lower detection limit was assessed using the same measurement set up as used for the linearity measurement. The required lower detection limit is 10 mW/kg.

### 3.4 ISOTROPY

The axial isotropy was evaluated by exposing the probe to a reference wave from a standard dipole with the dipole mounted under the flat phantom in the test configuration suggested for system validations and checks. The probe was rotated along its main axis from 0 - 360 degrees in 15 degree steps. The hemispherical isotropy is determined by inserting the probe in a thin plastic box filled with tissue-equivalent liquid, with the plastic box illuminated with the fields from a half wave dipole. The dipole is rotated about its axis (0°-180°) in 15° increments. At each step the probe is rotated about its axis (0°-360°).

### 3.5 BOUNDARY EFFECT

The boundary effect is defined as the deviation between the SAR measured data and the expected exponential decay in the liquid when the probe is oriented normal to the interface. To evaluate this effect, the liquid filled flat phantom is exposed to fields from either a reference dipole or waveguide. With the probe normal to the phantom surface, the peak spatial average SAR is measured and compared to the analytical value at the surface.

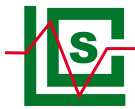
## 4 MEASUREMENT UNCERTAINTY

The guidelines outlined in the IEEE 1528, OET 65 Bulletin C, CENELEC EN50361 and CEI/IEC 62209 standards were followed to generate the measurement uncertainty associated with an E-field probe calibration using the waveguide technique. All uncertainties listed below represent an expanded uncertainty expressed at approximately the 95% confidence level using a coverage factor of k=2, traceable to the Internationally Accepted Guides to Measurement Uncertainty.

Uncertainty analysis of the probe calibration in waveguide					
ERROR SOURCES	Uncertainty value (%)	Probability Distribution	Divisor	ci	Standard Uncertainty (%)
Incident or forward power	3.00%	Rectangular	$\sqrt{3}$	1	1.732%
Reflected power	3.00%	Rectangular	$\sqrt{3}$	1	1.732%
Liquid conductivity	5.00%	Rectangular	$\sqrt{3}$	1	2.887%
Liquid permittivity	4.00%	Rectangular	$\sqrt{3}$	1	2.309%
Field homogeneity	3.00%	Rectangular	$\sqrt{3}$	1	1.732%
Field probe positioning	5.00%	Rectangular	$\sqrt{3}$	1	2.887%

Page: 5/10

This document shall not be reproduced, except in full or in part, without the written approval of MVG.  
The information contained herein is to be used only for the purpose for which it is submitted and is not to be released in whole or part without written approval of MVG.



## COMOSAR E-FIELD PROBE CALIBRATION REPORT

Ref: ACR.281.2.18.SATU.A

Field probe linearity	3.00%	Rectangular	$\sqrt{3}$	1	1.732%
Combined standard uncertainty					5.831%
Expanded uncertainty 95 % confidence level k = 2					12.0%

## 5 CALIBRATION MEASUREMENT RESULTS

Calibration Parameters	
Liquid Temperature	21 °C
Lab Temperature	21 °C
Lab Humidity	45 %

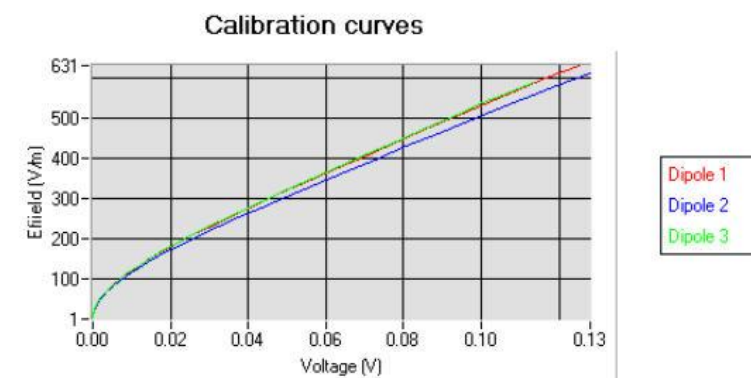
## 5.1 SENSITIVITY IN AIR

Normx dipole 1 ( $\mu\text{V}/(\text{V}/\text{m})^2$ )	Normy dipole 2 ( $\mu\text{V}/(\text{V}/\text{m})^2$ )	Normz dipole 3 ( $\mu\text{V}/(\text{V}/\text{m})^2$ )
0.80	0.83	0.68

DCP dipole 1 (mV)	DCP dipole 2 (mV)	DCP dipole 3 (mV)
95	90	93

Calibration curves  $c_i=f(V)$  ( $i=1,2,3$ ) allow to obtain H-field value using the formula:

$$E = \sqrt{E_1^2 + E_2^2 + E_3^2}$$



Page: 6/10

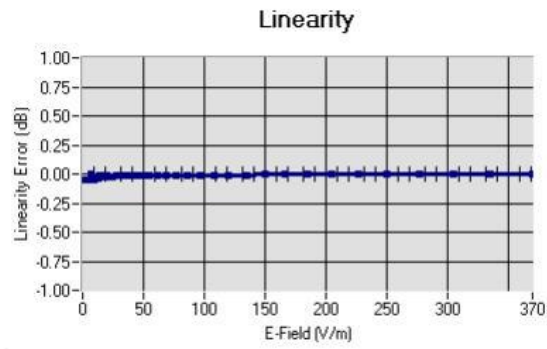
This document shall not be reproduced, except in full or in part, without the written approval of MVG.  
The information contained herein is to be used only for the purpose for which it is submitted and is not to be released in whole or part without written approval of MVG.



## COMOSAR E-FIELD PROBE CALIBRATION REPORT

Ref: ACR.281.2.18.SATU.A

### 5.2 LINEARITY



Linearity  $\pm 1.13\%$  ( $\pm 0.05\text{dB}$ )

### 5.3 SENSITIVITY IN LIQUID

Liquid	Frequency (MHz $\pm$ 100MHz)	Permittivity	Epsilon (S/m)	ConvF
HL450	450	42.17	0.86	1.56
BL450	450	57.65	0.95	1.60
HL750	750	40.03	0.93	1.45
BL750	750	56.83	1.00	1.50
HL850	835	42.19	0.90	1.55
BL850	835	54.67	1.01	1.59
HL900	900	42.08	1.01	1.54
BL900	900	55.25	1.08	1.60
HL1800	1800	41.68	1.46	1.65
BL1800	1800	53.86	1.46	1.68
HL1900	1900	38.45	1.45	1.86
BL1900	1900	53.32	1.56	1.93
HL2000	2000	38.26	1.38	1.83
BL2000	2000	52.70	1.51	1.89
HL2300	2300	39.44	1.62	1.95
BL2300	2300	54.52	1.77	2.01
HL2450	2450	37.50	1.80	1.91
BL2450	2450	53.22	1.89	1.95
HL2600	2600	39.80	1.99	1.89
BL2600	2600	52.52	2.23	1.94
HL5200	5200	35.64	4.67	1.50
BL5200	5200	48.64	5.51	1.56
HL5400	5400	36.44	4.87	1.44
BL5400	5400	46.52	5.77	1.47
HL5600	5600	36.66	5.17	1.48
BL5600	5600	46.79	5.77	1.53
HL5800	5800	35.31	5.31	1.50
BL5800	5800	47.04	6.10	1.55

LOWER DETECTION LIMIT: 9mW/kg

Page: 7/10

*This document shall not be reproduced, except in full or in part, without the written approval of MVG.  
The information contained herein is to be used only for the purpose for which it is submitted and is not to be released in whole or part without written approval of MVG.*



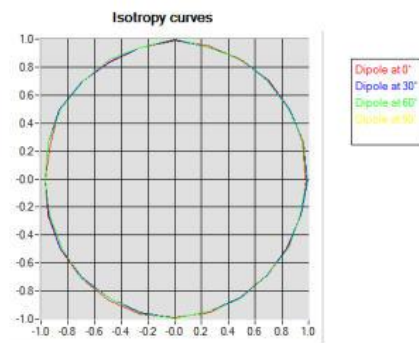
## COMOSAR E-FIELD PROBE CALIBRATION REPORT

Ref: ACR.281.2.18.SATU.A

### 5.4 ISOTROPY

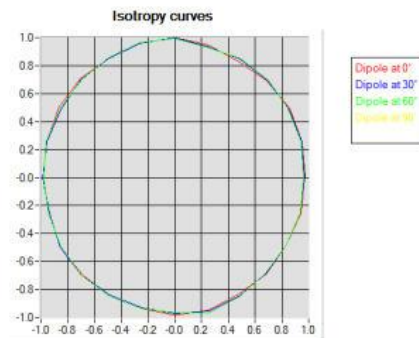
#### **HL900 MHz**

- Axial isotropy: 0.05 dB
- Hemispherical isotropy: 0.07 dB



#### **HL1800 MHz**

- Axial isotropy: 0.06 dB
- Hemispherical isotropy: 0.07 dB



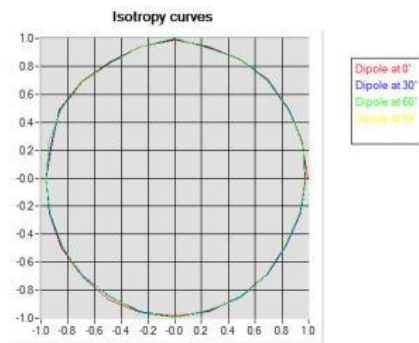


## COMOSAR E-FIELD PROBE CALIBRATION REPORT

Ref: ACR.281.2.18.SATU.A

### HL5600 MHz

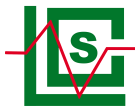
- Axial isotropy: 0.06 dB  
- Hemispherical isotropy: 0.10 dB



Page: 9/10

*This document shall not be reproduced, except in full or in part, without the written approval of MVG.  
The information contained herein is to be used only for the purpose for which it is submitted and is not to be released in whole or part without written approval of MVG.*





## COMOSAR E-FIELD PROBE CALIBRATION REPORT

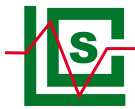
Ref: ACR.281.2.18.SATU.A

## 6 LIST OF EQUIPMENT

Equipment Summary Sheet				
Equipment Description	Manufacturer / Model	Identification No.	Current Calibration Date	Next Calibration Date
Flat Phantom	MVG	SN-20/09-SAM71	Validated. No cal required.	Validated. No cal required.
COMOSAR Test Bench	Version 3	NA	Validated. No cal required.	Validated. No cal required.
Network Analyzer	Rhode & Schwarz ZVA	SN100132	02/2019	02/2022
Reference Probe	MVG	EP 94 SN 37/08	10/2019	10/2021
Multimeter	Keithley 2000	1188656	01/2020	01/2023
Signal Generator	Agilent E4438C	MY49070581	01/2020	01/2023
Amplifier	Aethercomm	SN 046	Characterized prior to test. No cal required.	Characterized prior to test. No cal required.
Power Meter	HP E4418A	US38261498	01/2020	01/2023
Power Sensor	HP ECP-E26A	US37181460	01/2020	01/2023
Directional Coupler	Narda 4216-20	01386	Characterized prior to test. No cal required.	Characterized prior to test. No cal required.
Waveguide	Mega Industries	069Y7-158-13-712	Validated. No cal required.	Validated. No cal required.
Waveguide Transition	Mega Industries	069Y7-158-13-701	Validated. No cal required.	Validated. No cal required.
Waveguide Termination	Mega Industries	069Y7-158-13-701	Validated. No cal required.	Validated. No cal required.
Temperature / Humidity Sensor	Control Company	150798832	11/2020	11/2023

Page: 10/10

This document shall not be reproduced, except in full or in part, without the written approval of MVG.  
The information contained herein is to be used only for the purpose for which it is submitted and is not to be released in whole or part without written approval of MVG.



## 5.2 SID835Dipole Calibration Certificate



### SAR Reference Dipole Calibration Report

Ref : ACR.287.4.14.SATU.A

#### **SHENZHEN LCS COMPLIANCE TESTING LABORATORY LTD.**

**1F., XINGYUAN INDUSTRIAL PARK, TONGDA ROAD,  
BAO'AN BLVD  
BAO'AN DISTRICT, SHENZHEN, GUANGDONG, CHINA  
SATIMO COMOSAR REFERENCE DIPOLE**

**FREQUENCY: 835 MHZ**

**SERIAL NO.: SN 07/14 DIP 0G835-303**

**Calibrated at SATIMO US**

**2105 Barrett Park Dr. - Kennesaw, GA 30144**

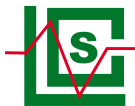


**09/29/2021**

#### *Summary:*

This document presents the method and results from an accredited SAR reference dipole calibration performed in SATIMO USA using the COMOSAR test bench. All calibration results are traceable to national metrology institutions.





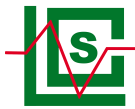
## SAR REFERENCE DIPOLE CALIBRATION REPORT

Ref: ACR.287.4.14.SATU.A

	Name	Function	Date	Signature
Prepared by :	Jérôme LUC	Product Manager	10/12/2021	<i>JS</i>
Checked by :	Jérôme LUC	Product Manager	10/12/2021	<i>JS</i>
Approved by :	Kim RUTKOWSKI	Quality Manager	10/12/2021	<i>Kim Rutkowski</i>

	Customer Name
Distribution :	Shenzhen LCS Compliance Testing Laboratory Ltd.

Issue	Date	Modifications
A	10/12/2021	Initial release



## TABLE OF CONTENTS

1	Introduction.....	4
2	Device Under Test .....	4
3	Product Description .....	4
3.1	General Information .....	4
4	Measurement Method .....	5
4.1	Return Loss Requirements .....	5
4.2	Mechanical Requirements .....	5
5	Measurement Uncertainty.....	5
5.1	Return Loss .....	5
5.2	Dimension Measurement .....	5
5.3	Validation Measurement .....	5
6	Calibration Measurement Results.....	6
6.1	Return Loss and Impedance .....	6
6.2	Mechanical Dimensions .....	6
7	Validation measurement .....	7
7.1	Head Liquid Measurement .....	7
7.2	SAR Measurement Result With Head Liquid .....	7
7.3	Body Liquid Measurement .....	9
7.4	SAR Measurement Result With Body Liquid .....	9
8	List of Equipment .....	11



## 1 INTRODUCTION

This document contains a summary of the requirements set forth by the IEEE 1528, OET 65 Bulletin C and CEI/IEC 62209 standards for reference dipoles used for SAR measurement system validations and the measurements that were performed to verify that the product complies with the fore mentioned standards.

## 2 DEVICE UNDER TEST

Device Under Test	
Device Type	COMOSAR 835 MHz REFERENCE DIPOLE
Manufacturer	Satimo
Model	SID835
Serial Number	SN 07/14 DIP 0G835-303
Product Condition (new / used)	New

A yearly calibration interval is recommended.

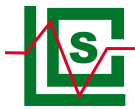
## 3 PRODUCT DESCRIPTION

### 3.1 GENERAL INFORMATION

Satimo's COMOSAR Validation Dipoles are built in accordance to the IEEE 1528, OET 65 Bulletin C and CEI/IEC 62209 standards. The product is designed for use with the COMOSAR test bench only.



**Figure 1 – Satimo COMOSAR Validation Dipole**



## 4 MEASUREMENT METHOD

The IEEE 1528, OET 65 Bulletin C and CEI/IEC 62209 standards provide requirements for reference dipoles used for system validation measurements. The following measurements were performed to verify that the product complies with the fore mentioned standards.

### 4.1 RETURN LOSS REQUIREMENTS

The dipole used for SAR system validation measurements and checks must have a return loss of -20 dB or better. The return loss measurement shall be performed against a liquid filled flat phantom, with the phantom constructed as outlined in the fore mentioned standards.

### 4.2 MECHANICAL REQUIREMENTS

The IEEE Std. 1528 and CEI/IEC 62209 standards specify the mechanical components and dimensions of the validation dipoles, with the dimensions frequency and phantom shell thickness dependent. The COMOSAR test bench employs a 2 mm phantom shell thickness therefore the dipoles sold for use with the COMOSAR test bench comply with the requirements set forth for a 2 mm phantom shell thickness.

## 5 MEASUREMENT UNCERTAINTY

All uncertainties listed below represent an expanded uncertainty expressed at approximately the 95% confidence level using a coverage factor of  $k=2$ , traceable to the Internationally Accepted Guides to Measurement Uncertainty.

### 5.1 RETURN LOSS

The following uncertainties apply to the return loss measurement:

Frequency band	Expanded Uncertainty on Return Loss
400-6000MHz	0.1 dB

### 5.2 DIMENSION MEASUREMENT

The following uncertainties apply to the dimension measurements:

Length (mm)	Expanded Uncertainty on Length
3 - 300	0.05 mm

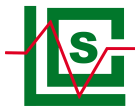
### 5.3 VALIDATION MEASUREMENT

The guidelines outlined in the IEEE 1528, OET 65 Bulletin C, CENELEC EN50361 and CEI/IEC 62209 standards were followed to generate the measurement uncertainty for validation measurements.

Scan Volume	Expanded Uncertainty
1 g	20.3 %
10 g	20.1 %

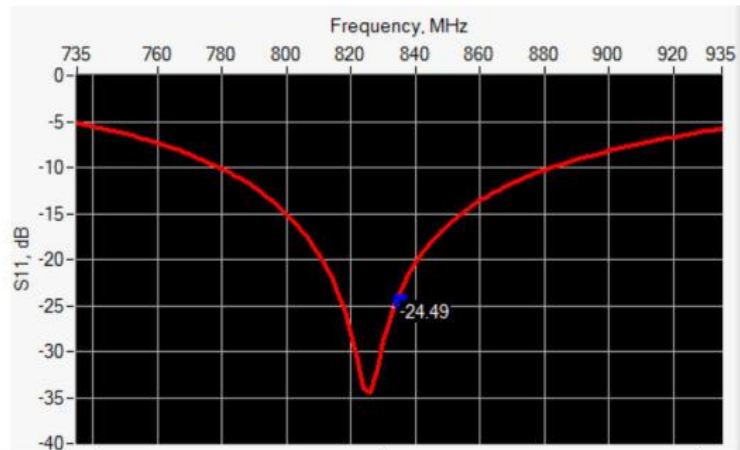
Page: 5/11

*This document shall not be reproduced, except in full or in part, without the written approval of SATIMO.  
The information contained herein is to be used only for the purpose for which it is submitted and is not to be released in whole or part without written approval of SATIMO.*



## 6 CALIBRATION MEASUREMENT RESULTS

### 6.1 RETURN LOSS AND IMPEDANCE



Frequency (MHz)	Return Loss (dB)	Requirement (dB)	Impedance
835	-24.49	-20	$54.9 \Omega + 2.8 j\Omega$

### 6.2 MECHANICAL DIMENSIONS

Frequency MHz	L mm		h mm		d mm	
	required	measured	required	measured	required	measured
300	420.0 ±1 %.		250.0 ±1 %.		6.35 ±1 %.	
450	290.0 ±1 %.		166.7 ±1 %.		6.35 ±1 %.	
750	176.0 ±1 %.		100.0 ±1 %.		6.35 ±1 %.	
835	161.0 ±1 %.	PASS	89.8 ±1 %.	PASS	3.6 ±1 %.	PASS
900	149.0 ±1 %.		83.3 ±1 %.		3.6 ±1 %.	
1450	89.1 ±1 %.		51.7 ±1 %.		3.6 ±1 %.	
1500	80.5 ±1 %.		50.0 ±1 %.		3.6 ±1 %.	
1640	79.0 ±1 %.		45.7 ±1 %.		3.6 ±1 %.	
1750	75.2 ±1 %.		42.9 ±1 %.		3.6 ±1 %.	
1800	72.0 ±1 %.		41.7 ±1 %.		3.6 ±1 %.	
1900	68.0 ±1 %.		39.5 ±1 %.		3.6 ±1 %.	
1950	66.3 ±1 %.		38.5 ±1 %.		3.6 ±1 %.	
2000	64.5 ±1 %.		37.5 ±1 %.		3.6 ±1 %.	
2100	61.0 ±1 %.		35.7 ±1 %.		3.6 ±1 %.	
2300	55.5 ±1 %.		32.6 ±1 %.		3.6 ±1 %.	
2450	51.5 ±1 %.		30.4 ±1 %.		3.6 ±1 %.	
2600	48.5 ±1 %.		28.8 ±1 %.		3.6 ±1 %.	
3000	41.5 ±1 %.		25.0 ±1 %.		3.6 ±1 %.	
3500	37.0 ±1 %.		26.4 ±1 %.		3.6 ±1 %.	
3700	34.7 ±1 %.		26.4 ±1 %.		3.6 ±1 %.	

Page: 6/11

This document shall not be reproduced, except in full or in part, without the written approval of SATIMO.  
The information contained herein is to be used only for the purpose for which it is submitted and is not to be released in whole or part without written approval of SATIMO.