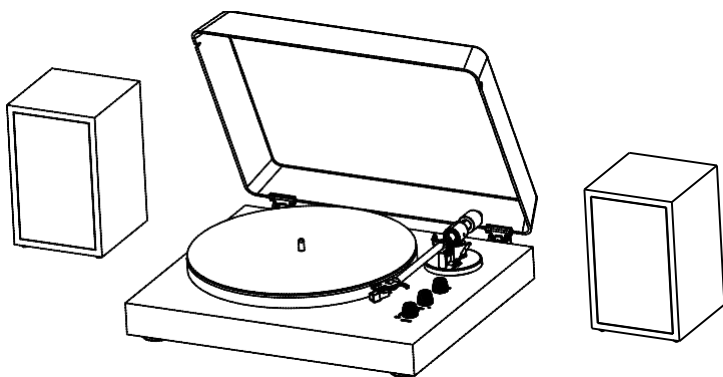


Model No.:B-619





The lightning flash with arrow- head symbol, within an equilateral triangle is intended to alert the user to the presence of uninsulated 'dangerous voltage' within the product's enclosure that may be of sufficient magnitude to constitute a risk of electric shock to persons.

CAUTION
RISK OF ELECTRIC SHOCK
DO NOT OPEN

WARNING: TO REDUCE THE RISK OF ELECTRIC SHOCK DO NOT REMOVE COVER (OR BACK), NO USER SERVICEABLE PARTS INSIDE REFER SERVICING TO QUALIFIED SERVICE PERSONNEL.



The exclamation point within an equilateral triangle is intended to alert the user to the presence of important operating and maintenance (servicing) instructions in the literature accompanying the appliance.

IMPORTANT SAFETY INSTRUCTIONS!

PLEASE READ THEM BEFORE OPERATING THIS EQUIPMENT.

1. Read these instructions.
2. Keep these instructions.
3. Heed all warnings.
4. Follow all instructions.
5. Do not use this apparatus near water.
6. Clean only with a dry cloth.
7. Do not block any ventilation openings. Install in accordance with the manufacturer's instructions.
8. Do not install near any heat sources such as radiators, heat registers, stoves, or other apparatus (including amplifiers) that produce heat.
9. Do not defeat the safety purpose of the polarized or grounding-type plug. A polarized plug has two blades with one wider than the other. A grounding type plug has two blades and a third grounding prong. The wide blade or the third prong are provided for your safety. If the provided plug does not fit into your outlet, consult an electrician for replacement of the obsolete outlet.
10. Protect the power cord from being walked on or pinched particularly at plugs, convenience receptacles, and the point where they exit from the apparatus.
11. Only use attachments/accessories specified by the manufacturer.
12. Use only with the cart, stand, tripod, bracket, or table specified by the manufacturer, or sold with the apparatus. When a cart is used, use caution when moving the cart apparatus combination to avoid injury from tip-over.
13. Unplug this apparatus during lightning storms or when unused for long periods of time.
14. Refer all servicing to qualified service personnel. Servicing is required when the apparatus has been damaged in any way, such as power supply cord or plug is damaged, liquid has been spilled or objects have fallen into the apparatus, the apparatus has been exposed to rain or moisture, does not operate normally, or has been dropped.
15. Do not expose this equipment to dripping or splashing and ensure that no objects filled with liquids, such as vases, are placed on the equipment.
16. To completely disconnect this equipment from the a.c. mains, disconnect the AC/DC adapter from the a.c. receptacle.
17. The mains plug of the power supply cord shall remain readily operable. If the AC/DC adapter is provided with a mains power supply cord attached, the plug of this power supply cord shall remain readily operable.
18. Do not expose batteries to excessive heat such as sunshine, fire or the like.
19. Connect mains power supply cord only to a mains socket outlet with a protective earthing connection.



WARNING: Use this product only with the power adapter provided. Failure to do so may result in fire and/or electrical shock.

BEFORE USING THE UNIT

- As the unit may become warm during operation, always leave sufficient space around the unit for ventilation.
- The voltage supplied to the unit should match the voltage as printed on the rear panel. If you are in any doubt regarding this matter, consult an electrician.
- Choose the installation location of your unit carefully. Avoid placing it in direct sunlight or close to a source of heat. Also avoid locations subject to vibrations and excessive dust, heat, cold or moisture.
- Do not place the unit on another electric device such as a TV.
- Do not open the cabinet as this might result in damage to the circuitry or electrical shock. If any object should get into the unit, contact your dealer or service company.
- When removing the power plug from the wall outlet, always pull directly on the plug, not the power cord.
- To keep the stylus pickup clean, do not touch it, and always replace with the protective cover.
- Do not attempt to clean the unit with chemical solvents as this might damage the finish. Use a clean damp dry cloth.
- Keep this manual in a safe place for future reference.

DO NOT MOVE THE UNIT WHILST IT IS IN USE

During playback, the turntable rotates at high speed. Doing so may damage the turntable mechanism or the unit.

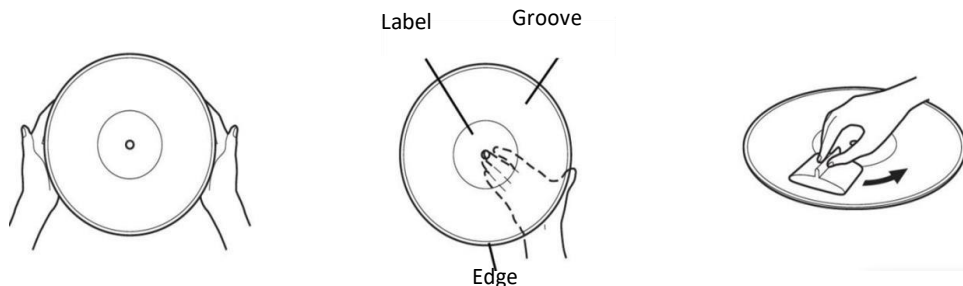
WHEN MOVING THE UNIT

When changing the unit's location or packing the unit for moving, after disconnecting the power adapter from the outlet, remove the mat and platter, and then wrap them so that they do not get damaged. Be sure to

pack the unit carefully and securely. If the unit is to be packed and moved a great distance, it is also advisable to lock the Tonearm on the holder.

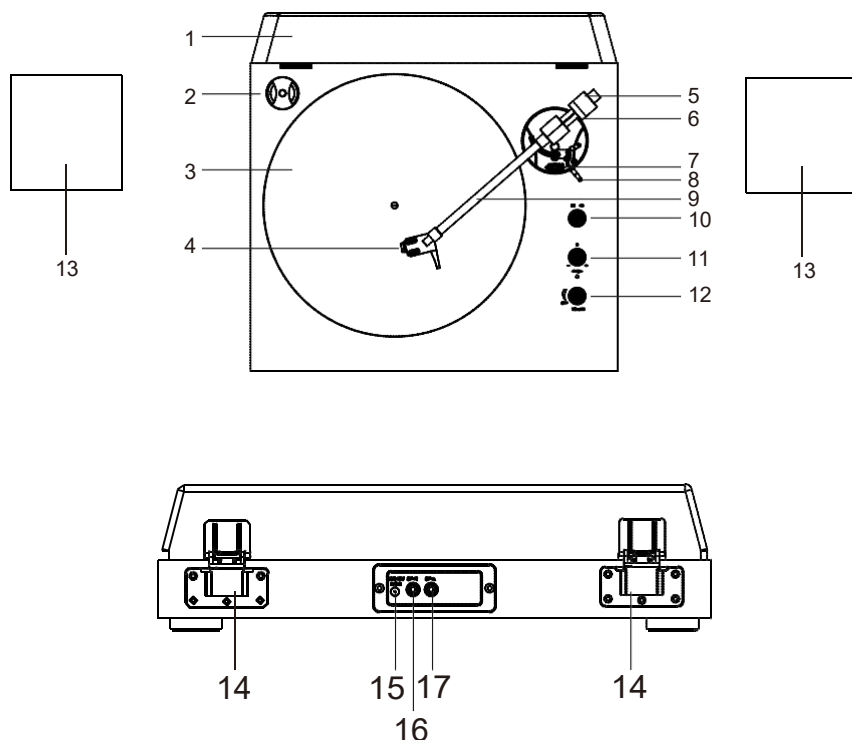
HANDLING RECORDS

- Do not touch the record's grooves. Only handle records by the edges or the label. Make sure your hands are clean. Skin oils from even clean hands can leave a residue on the record surface that will gradually deteriorate the quality of your record.



- Should the record become dirty, gently wipe the surface in a circular motion, using a soft anti-static cloth.
- Keep your records away from dust. Keep them in a cool, dry place.
- To avoid dust and scratches, keep records in their sleeves and jackets when not in use.
- Store records upright on their edges. Records stored horizontally will eventually bend and warp.
- Do not expose records to direct sunlight or high humidity and temperature. Long exposure to high temperatures will warp the record.
- Do not store your records in the trunk of your car. The temperature in a closed trunk can ruin your collection.
- Store records in an area with a stable temperature and low humidity.

CONTROLS AND FUNCTIONS

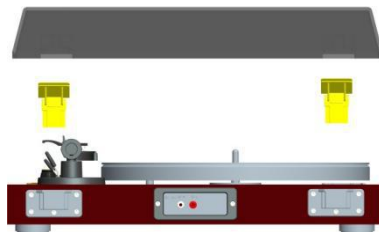


- | | |
|-----------------------------|--------------------------------|
| 1.Transparent Lid | 10.Speed Selector |
| 2.45 RPM Adapter | 11.Pitch Control |
| 3.Turntable Platter | 12.Power Switch/Volume Control |
| 4.Moving Magnetic Cartridge | 13.Speakers |
| 5.Tonearm Counterweight | 14.Lid Hinges |
| 6.Downforce Scale Dial | 15.Power Jack |
| 7.Tonearm Clip | 16.Right Speaker Jack |
| 8.Tonearm Lift lever | 17.Left Speaker Jack |
| 9.Tonearm | |

INITIAL SETUP

ESSENTIAL SETUP

1. Place the unit on a flat and level surface.
The selected location should be stable and free from vibration.
2. Insert the hinges into the slots on the transparent lid. Then insert them into the hinge holders on the back of the main unit.
3. Remove the tie-wrap that is holding the tonearm.
4. Place the slip mat on top of the turntable platter.
5. Connect the speakers to the speaker jacks at the back of the unit.
6. Connect power adapter to the power jack of the unit.



Note: Do not plug the power adapter to power outlet before all the assembly is completed. Before turning the power on, make sure again all the connection settings are correct. Always turn off the power when connecting or disconnecting.

TURNTABLE PLATTER AND BELT SETUP

1. Insert the latter into the turntable spindle located in the middle of the turntable, then rotate the platter until you see the drive motor pulley through the window at the top right corner.
2. Carefully grab the drive belt and put it around the slot of motor pulley.



TONEARM COUNTERWEIGHT ADJUSTMENT FOR STYLUS PRESSURE

1. Gently push and turn the Counterweight onto the rear of the tonearm (with the dial facing toward the rear of the turntable). Remove the stylus protector from the cartridge and avoid touching the stylus tip during the adjustment.
2. Release the tonearm clip, gently hold the tonearm and move it away from the Tonearm Rest and position the cartridge in the space between the tonearm rest and platter. At this point, the tonearm is unbalance and free to swing.
3. Carefully rotate the Counterweight until the tonearm achieves a neutral balance. The tonearm should return to this balanced position if it is moved up or down. This adjustment must be done carefully.
4. Once the tonearm is correctly balanced, return the tonearm to the tonearm rest and lock the Clip.
5. While holding the counterweight steady without any rotation, rotate carefully only the Downforce Scale Dial until the "0" on the scale lines up with the centerline marked along the top of the tonearm.
6. Rotate the counterweight including the downforce scale dial counter-clockwise (as seen from the front of the turntable) until the scale shows the recommended pressure value for stylus.



Note: Each mark on the scale represents 0.05g. The recommended tracking force for the factory-installed cartridge is $3.5g \pm 0.5g$. The cartridge tracking force only goes up to 2g for one rotation of the tracking force dial. You will need to make more than one rotation to reach 3.5g.

OPERATING INSTRUCTIONS

TURNTABLE OPERATION

Connect the included power adapter to the turntable and switch the unit on by turning the POWER SWITCH (12) located on the front panel. Remove the stylus protector from the stylus.

1. Set the SPEED SELECTOR (9) to desired speed (33 1/3 ,45 rpm). Place the record on the slip mat. For 45 RPM records, place the 45 RPM adapter(2) on the center spindle before placing the record on the platter.
2. Remove the tie-wrap on the tonearm and unlock it. Push the lift lever (8) backward to raise the tonearm and gently move the tonearm towards the desired location (groove) on the record. Lower the tonearm by moving the tonearm lift control lever to the down position. The tonearm descends slowly onto the record and begins to play the record.
3. Adjust the VOLUME control (12) as needed .
4. At the end of the record, the tone arm will stop automatically by the center and the unit will switch to Bluetooth mode. Lift the tonearm from the record and return it to the rest.
5. To stop manually, gently lift the tone arm from the record and return it to the rest. Lock the tonearm clip to secure the tonearm.

BLUETOOTH OPERATION

1. Turn on the power switch knob(12), you will hear an activation sound from the unit. The default mode is Bluetooth mode. (When lift the tonearm on the record, it automatically switch to Phono mode.)
2. Turn on the Bluetooth feature on your audio device such as your mobile phone, search for device name " B-619" and pair. Once your device is successfully paired with the turntable you will hear a short confirmation sound from the unit. Play and stream music from your device to the unit.
3. Turn the VOLUME CONTROL KNOB(12) to adjust the volume. The mobile phone or tablet PC's volume control also impact the overall volume level. Please adjust that as well if necessary.

PITCH CONTROL

The turntable speed can be increased or decreased by approximately 10% by rotating the Pitch Control knob. To increase the speed, turn the Pitch Control knob clockwise. To decrease the speed, turn the knob counter-clockwise.

TROUBLE SHOOTING

TURNTABLE OPERATES BUT EMITS NO SOUND OR SOUND NOT LOUD ENOUGH

1. The stylus protector is still on. Remove the stylus protector.
2. Tonearm is lift up by the lever.
3. Speakers are not connected with the turntable. Insert the speakers cable firmly into the jacks on the back of the turntable.
4. Stylus is broken or missing. Check the stylus assembly and replace if necessary.
5. The stylus assembly may not be fully seated in the cartridge body. Check the cartridge and adjust if necessary.

TURNTABLE OPERATE BUT STYLUS “SKIPS” ACROSS RECORD

1. The stylus guard is still in place. Remove the stylus guard.
2. The tracking force is set too light. Set tracking force by adjusting the position of counterweight.
3. The tracking force is set too heavy (stylus assembly is bottoming out on record). Set tracking force by adjusting the position of counter weight.
4. Turntable is picking up excessive vibrations from floor, walls, or nearby speakers. Reduce vibrations or place turntable on sturdy/ solid surface.

RECORD SOUNDS TOO FAST OR TOO SLOW

1. Turntable is set for wrong speed. Make proper speed selection for record type being played with platter speed buttons.
2. Variable pitch is engaged. Adjust the pitch adjust switch accordingly.

THERE IS HOWLING

1. Is the product picking up excessive vibrations from the floor, surfaces of the walls, or nearby speakers?
Decrease the vibrations or mount the product on a surface that is not subject to the effects of vibrations.
2. Is the product mounted on an unstable surface?
Check whether the surface on which the product is mounted is suitable.

THERE IS NOISE WHEN THE RECORD IS PLAYING.

- Is there dust on the cartridge's stylus tip?
-If dust is stuck to the stylus tip, clean it with a commercially sold brush.

TURNTABLE MAINTENANCE

Turntable Body

- When the turntable body is dirty or dusty, first disconnect the power adapter, and then wipe off the dirt and dust with a soft, dry cloth.
- Do not use benzenes, thinners, etc
- When storing the product for a long time, disconnect the adapter from the outlet and wrap the product in plastic; do not allow it to become damp; the drive belt should be removed to prevent Unequal stretching.

Stylus Tip

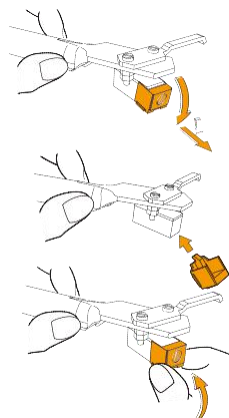
- If dirt and grime are stuck to the stylus tip, clean it with a commercially sold brush.
 - We recommend using a stylus cleaner (not included) if the stylus tip is considerably dirty.
- Clean the stylus tip by moving the brush from the rear to the front of the stylus tip.

Replacing the Stylus

It's suggested to replace the stylus after 400 hours of use.

Removing an old stylus:

- In addition to the deterioration of sound quality, records may also be damaged as the cartridge's stylus tip wears down.
- Be sure to disconnect the product's AC adapter from the outlet.
- When replacing the stylus, hold the headshell and the cartridge body tightly. Rotate the front of the stylus in a forward and down motion.



Installing a New Replacement Stylus

1. Mount the new replacement stylus to the cartridge.
Engage in body first
2. Lift the stylus up until you hear a click.
3. Make sure there is no gap between the headshell and the cartridge.

TECHNICAL SPECIFICATIONS

Power Supply	DC12V / 2A
Power Consumption	< 25 Watts
Power output	15 Watts X 2 Rms
Speaker unit	4" 4Ω/20W*2

FCC Statements

This equipment has been tested and found to comply with the limits for a Class B digital device, pursuant to Part 15 of the FCC Rules. These limits are designed to provide reasonable protection against harmful interference in a residential installation. This equipment generates, uses, and can radiate radio frequency energy and, if not installed and used in accordance with the instructions, may cause harmful interference to radio communications. However, there is no guarantee that interference will not occur in a particular installation. If this equipment does cause harmful interference to radio or television reception, which can be determined by turning the equipment off and on, the user is encouraged to try to correct the interference by one or more of the following measures:

- Reorient or relocate the receiving antenna.
- Increase the separation between the equipment and receiver.
- Connect the equipment into a circuit different from that to which the receiver is connected.
- Consult the dealer or an experienced radio TV technician for help.

