



智盈嘉科技  
Shiwinka Tech

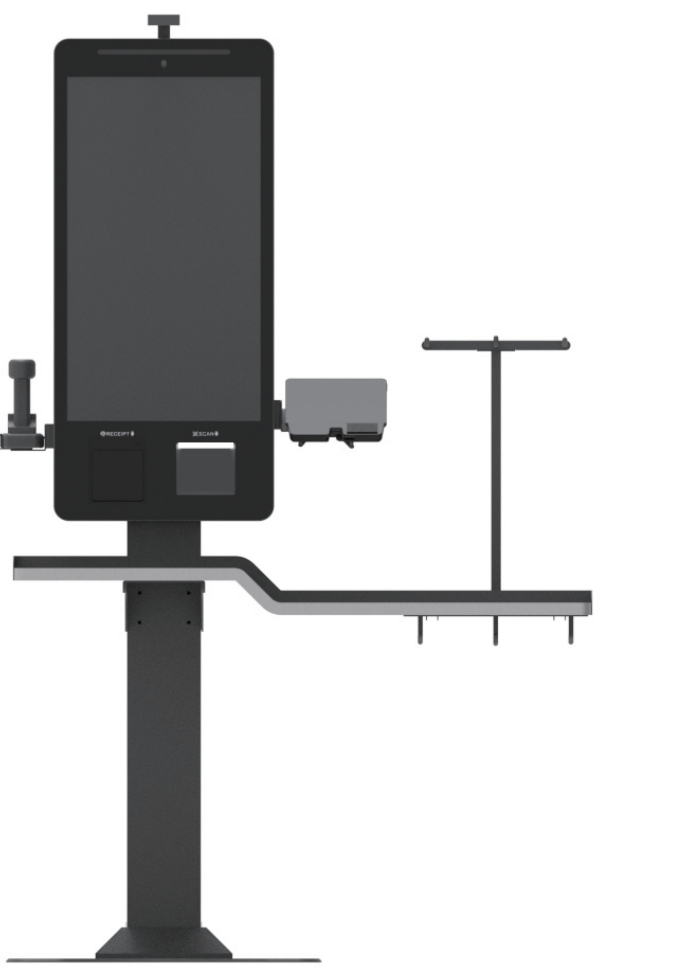


SCO-M-EAS-315  
Shiwinka Part Number DOC315-022-US, Revision 3  
© 2022 Shiwinka Technology Co., Ltd.

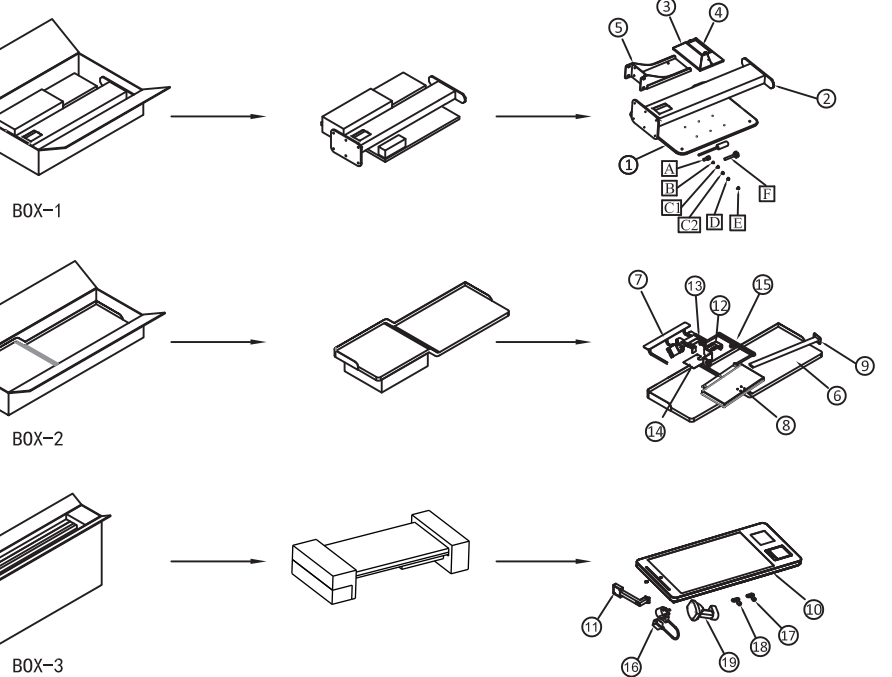


智盈嘉科技  
Shiwinka Tech

# SCO-M-EAS-315 Installation Instruction



## Part A: What is in the package.



1.Box 1 includes ① a base, ② a pole, ③ & ④ base cover, ⑤ a scan station counter support, it also includes various ⑥ ⑦ ⑧ ⑨ ⑩ ⑪ ⑫ ⑬ ⑭ ⑮ types of screws, bolts, and tools.

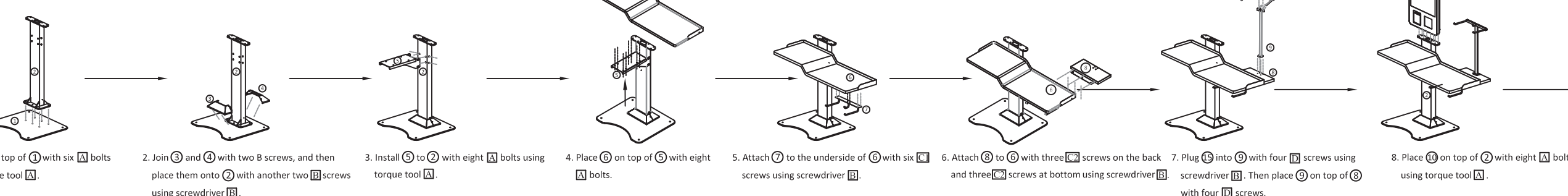
2.Box 2 includes ⑯ a scan station counter, ⑰ ⑱ ⑲ and ⑳ shipping bag holders, ㉑ a handheld scanner holder, ㉒ a pinpad holder, and ㉓ a lower back cover.

3.Box 3 includes ㉔ a screen, ㉕ a camera, ㉖ a power cord, ㉗ two keys to the host, ㉘ two keys to the printer, ㉙ a wireless handheld scanner.

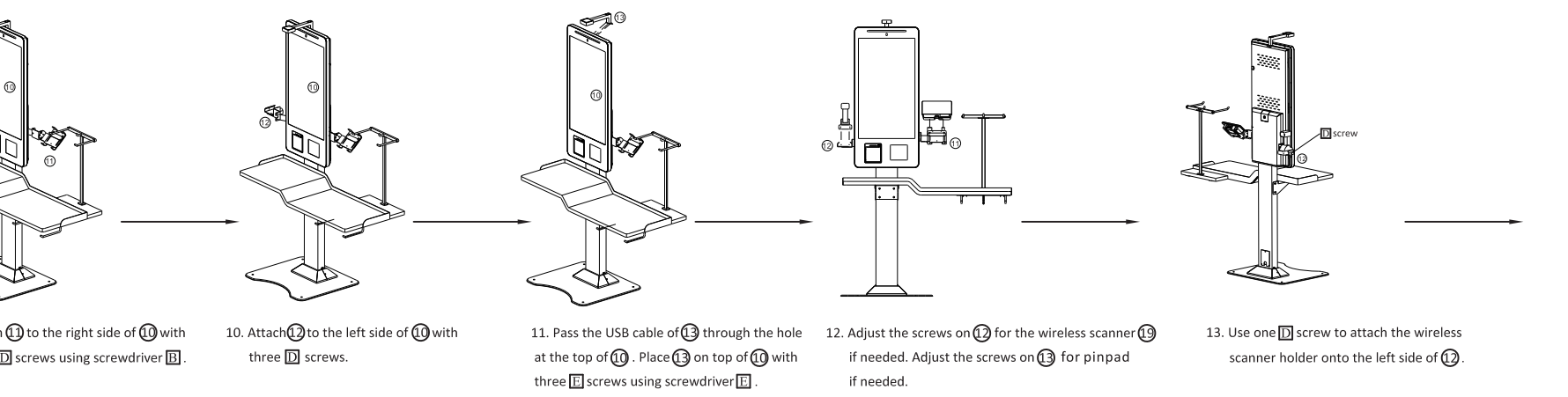
\* Note: pinpad and network cable are not included in the package.

Bolt ㉚ : M8X16 hex bolt  
Screw ㉛ : M3X6 flat-head screw  
Screw ㉜ : M4X6 flat-head screw  
Screw ㉝ : M4X6 flat-head screw with gasket  
Screw ㉞ : M4X10 flat-head screw  
Bolt ㉟ : M8X70 expansion bolt & nut

## Part B: How to assemble the main part of the self-checkout kiosk.



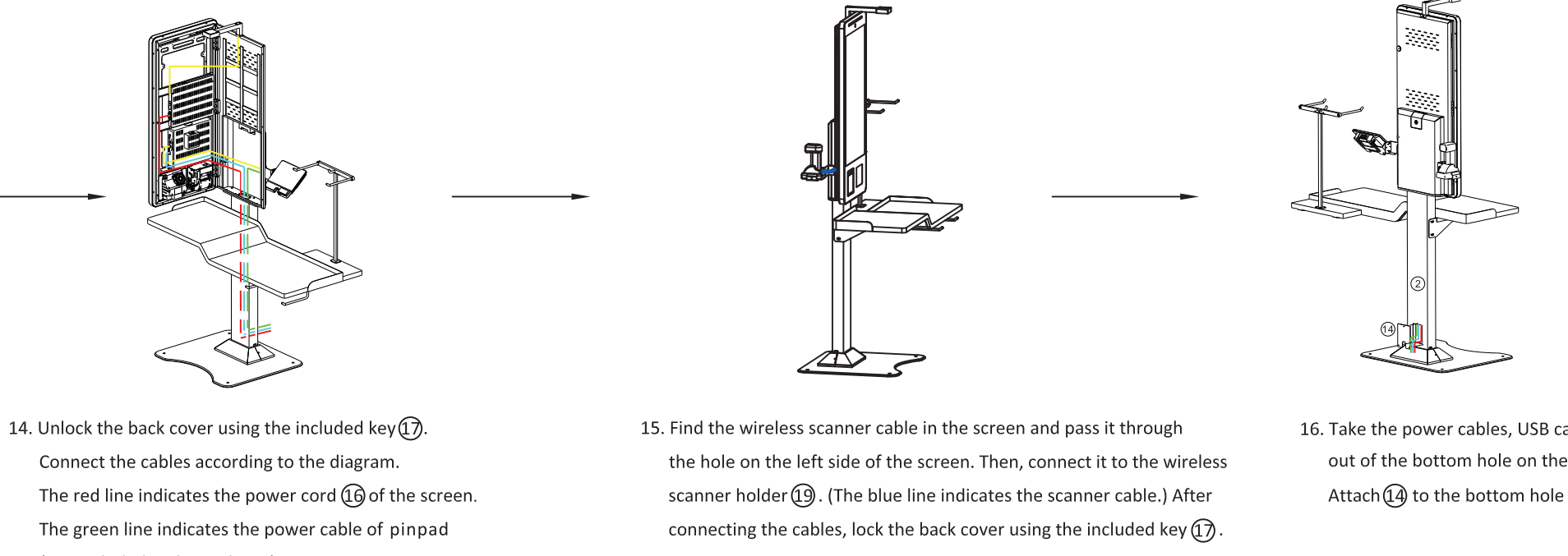
## Part C: How to assemble the accessory devices of the self-checkout kiosk.



13. Use one ㉛ screw to attach the wireless scanner holder onto the left side of ㉚.

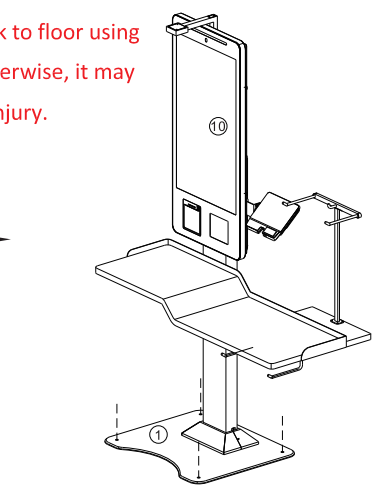
## SCO-M-EAS-315

## Part D: How to connect cables.



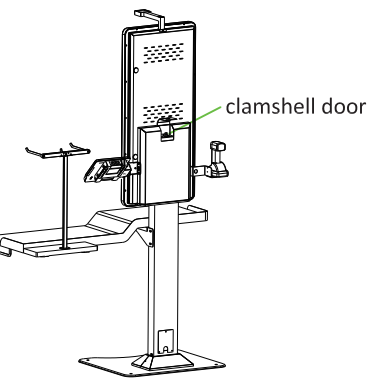
## Part E: How to bolt the self-checkout kiosk to floor.

**Warning!!**  
Please bolt the self-checkout kiosk to floor using the included expansion bolts. Otherwise, it may tip over causing damage and/or injury.

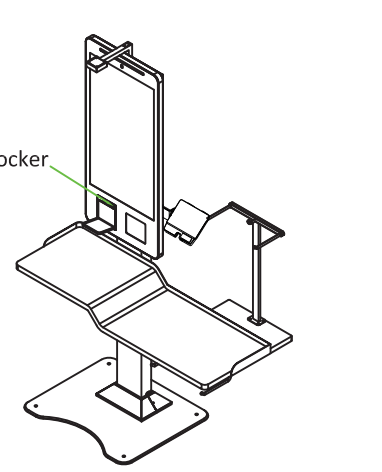


## Part F: How to turn on/off the self-checkout kiosk.

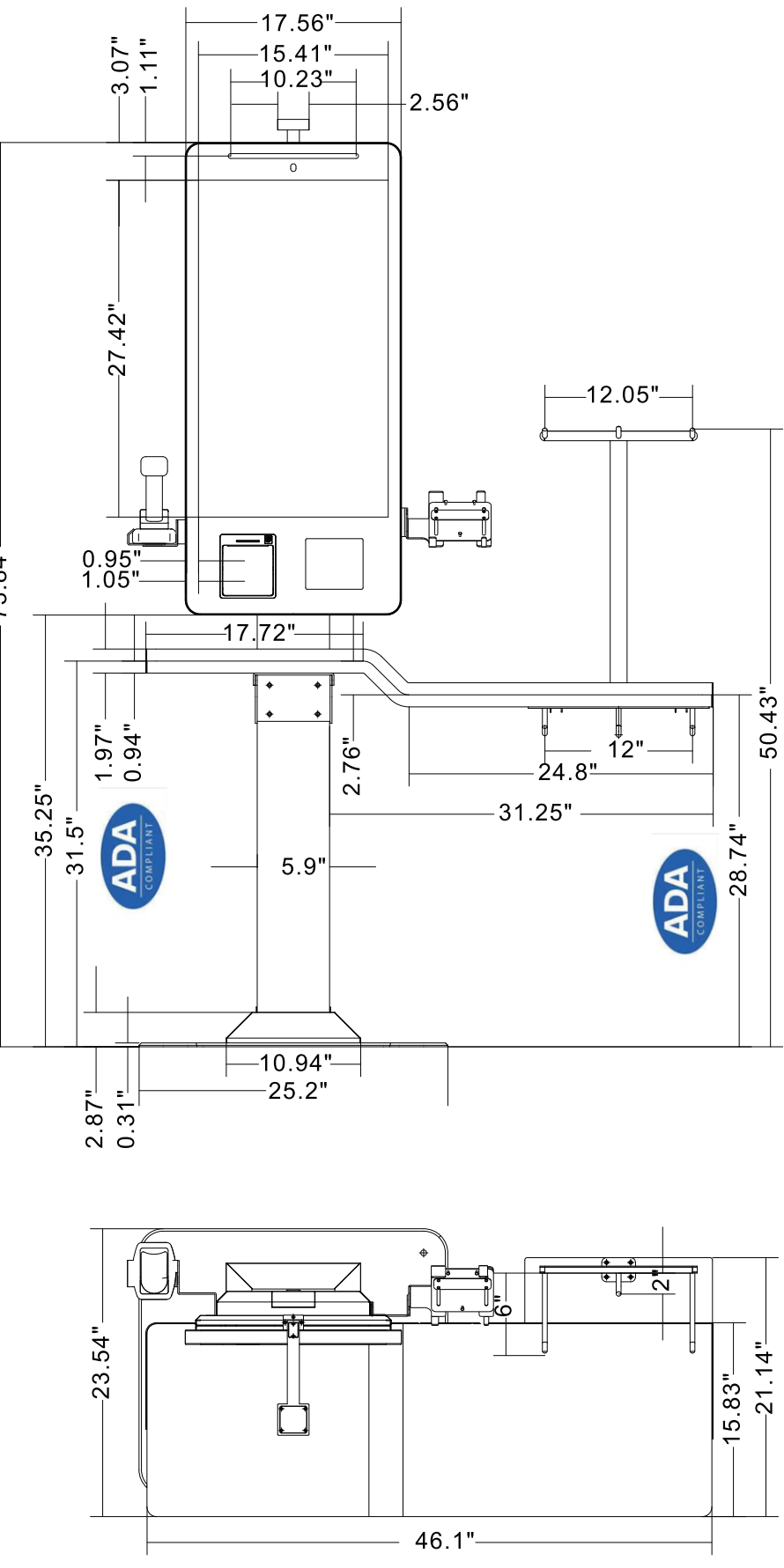
**Warning!!**  
Please make sure the equipment is grounded before turning it on. Otherwise, it may cause electric shock or damage to the equipment.



## Part G: How to change printer paper.



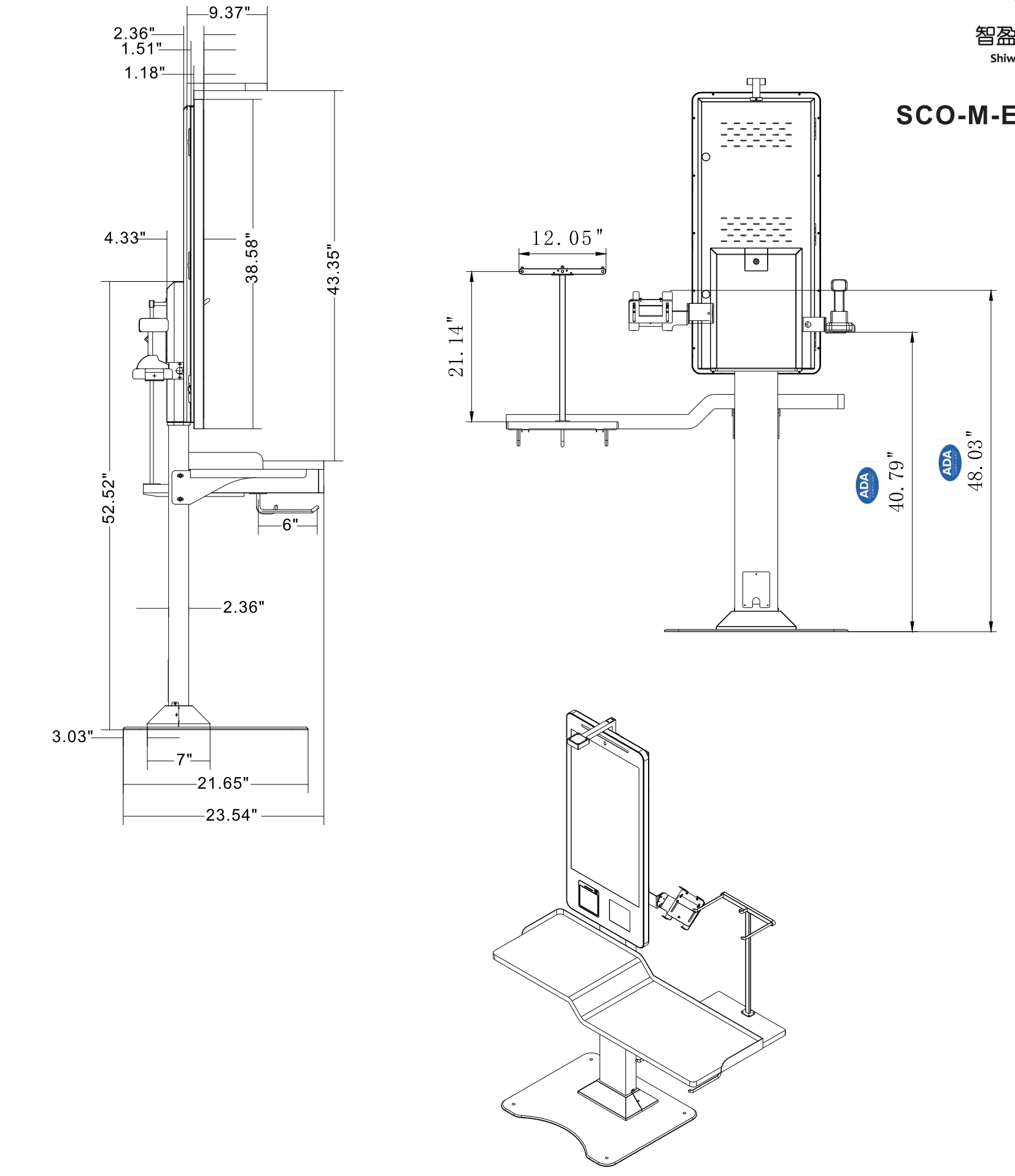
## SCO-M-EAS-315



Unit: inch



## SCO-M-EAS-315



#### FCC Warning

This device complies with part 15 of the FCC rules. Operation is subject to the following two conditions: (1) this device may not cause harmful interference, and (2) this device must accept any interference received, including interference that may cause undesired operation.

Changes or modifications not expressly approved by the party responsible for compliance could void the user's authority to operate the equipment.

NOTE: This equipment has been tested and found to comply with the limits for a Class B digital device, pursuant to part 15 of the FCC Rules. These limits are designed to provide reasonable protection against harmful interference in a residential installation. This equipment generates uses and can radiate radio frequency energy and, if not installed and used in accordance with the instructions, may cause harmful interference to radio communications. However, there is no guarantee that interference will not occur in a particular installation. If this equipment does cause harmful interference to radio or television reception, which can be determined by turning the equipment off and on, the user is encouraged to try to correct the interference by one or more of the following measures:

- Reorient or relocate the receiving antenna.
- Increase the separation between the equipment and receiver.
- Connect the equipment into an outlet on a circuit different from that to which the receiver is connected.
- Consult the dealer or an experienced radio/TV technician for help.

#### Radiation Exposure Statement

This equipment complies with FCC radiation exposure limits set forth for an uncontrolled environment. This equipment should be installed and operated with minimum distance 20cm between the radiator and your body.