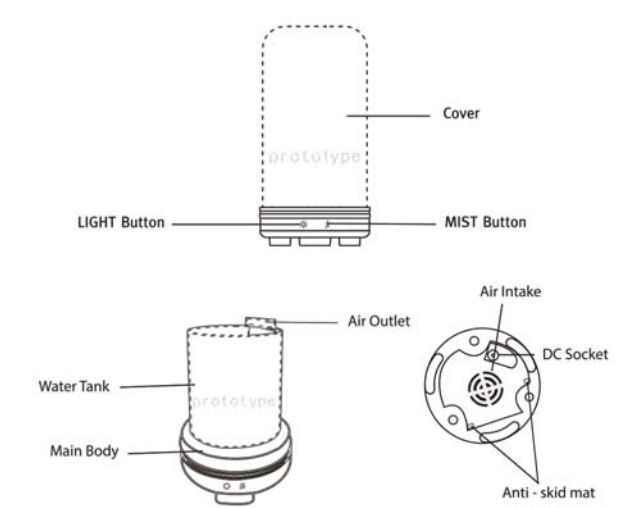


Smart aroma diffuser instruction manual

Tips: Please read the instruction manual of this product carefully before use and keep it properly.

The aroma diffuser adapts the principle of ultrasonic wave to atomize the water and essential oils in the water tank to produce a cool, moist and aromatic mist.



Smart aroma diffuser

Product specification parameters

Item No.	Product Size	Product Net Weight	Material
YMM901W	91 x 204mm	Approx 536g	PP/Ceramic
YMM902W	91 x 230mm	Approx 540g	PP/Ceramic
YMM903W	150 x 170mm	Approx 400g	PP/Rattan
YMM905W	168.5 x 215mm	Approx 536g	PP/Rattan
YMM906W	98 x 245mm	Approx 600g	PP/Ceramic
YMM908W	145 x 295mm	Approx 375g	PP/Rattan
YMM909W	153 x 188mm	Approx 455g	PP/Iron art
YMM910W	120 x 150mm	Approx 335g	PP/Iron art
YMM912W	120 x 198mm	Approx 335g	PP/Iron art
YMM913W	120 x 235mm	Approx 639g	PP/Ceramic
YMM914W	120 x 235mm	Approx 571g	PP/Ceramic
YMM915W	120 x 235mm	Approx 549g	PP/Ceramic
YMM916W	120 x 235mm	Approx 667g	PP/Ceramic
YMM917W	120 x 235mm	Approx 640g	PP/Ceramic
YMM918W	120 x 235mm	Approx 605g	PP/Ceramic
YMM919W	120 x 235mm	Approx 516g	PP/Ceramic
YMM920W	110 x 235mm	Approx 471g	PP/Ceramic
YMM921W	110 x 235mm	Approx 441g	PP/Ceramic
YMM930W	90 x 204mm	Approx 297g	PP/Bamboo
YMM931W	90 x 204mm	Approx 297g	PP/Bamboo

- 2 -

Smart aroma diffuser

Product specification parameters

Item No.	Product Size	Product Net Weight	Material
YMM940W	90 x 198mm	Approx 397g	PP/Iron art
YMM941W	90 x 198mm	Approx 397g	PP/Iron art
YMM942W	90 x 198mm	Approx 397g	PP/Iron art
YMM1002W	168.5 x 215mm	Approx 320g	PP

Tank capacity	120mL(YYM901-942W) / 300mL(YYM1002W)
LED color	colorful
Input / Output	AC100-240V 50/60Hz DC24v 500mA
Accessory	Power adapter specification
Resonant frequency	2.45 MHz ultrasonic wave
The output of Mist output	Small mist / Big mist

- 3 -

Smart aroma diffuser

Basic operation

- Place the smart aroma diffuser on a flat surface and remove the cover, then connect the adapter to the DC socket.
- Put the water into the cup container first, and then pour the water into the water tank of the aroma diffuser. If you need fragrance, you can put a few drops of essential oil in the water tank.
- Close the water tank cover and connect the AC adapter to the AC socket.
- Switch button: Small / heavy fog switch, long press to close directly.
- Light button: Colorful night light button, set the color of the colorful night light you want (gradient-bright-dark bright). Long press to turn off night light.

Note

- When the water is completely atomized, the smart aroma diffuser will automatically shut down.
- It is recommended to use purified water or distilled water. Note that the water level of the water tank cannot exceed maximum capacity.
- Pay attention to the direction when pouring water to prevent water from flowing into the air outlet.
- The smart aroma diffuser must be used on a flat surface, away from heat sources and humid environment.

- 4 -

Smart aroma diffuser

Smart APP Instructions



(TUYA smart)



(Smart life)

Compatible with IOS 8.0 + and Android 4.4 +

- Use a mobile device to scan the QR code above or download and install the app in the app market.
- Follow the APP interface prompts to register an account or log in with an existing account.

- 5 -

How to connect smart aroma diffuser and APP

- Connect the device to the power supply, open the APP application, click on the "+" in the upper right corner of the page or select "add manually" -> small home appliances -> diffuser (Wi-Fi).
- Reset the smart aroma diffuser, the blue indicator light is flashing quickly.
- Select 2.4GHz Wi-Fi network, enter the password, and click "Confirm".
- Wait for the smart aroma diffuser to connect successfully.
- Click "Finish".

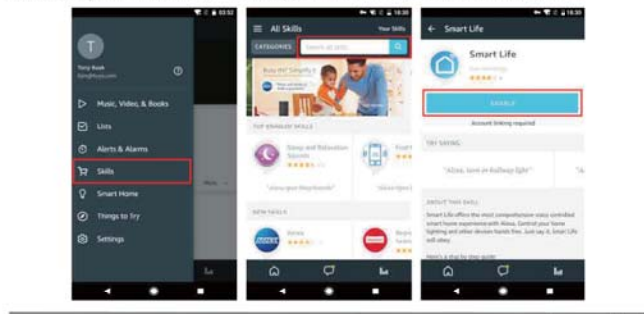
- Smart aroma diffuser reset: Turn on the power, press and hold the "Mist" and "Light" buttons for 3-4 seconds at the same time, you will hear a "di" beep and the blue status light flashes quickly, indicating that the device has been successfully reset. If long press "Mist" and "Light" for 4 seconds, you will hear two "di", "di" beeps, and the blue status light will flash slowly to enter the AP mode.
- APP application function: Tap the "Spray switch" icon to enter the spray setting interface. Tap the "Turn on spray", click the middle circular icon to adjust spray volume, click "Count down". Tap the "Night light" icon to enter the colorful light settings. Tap the "Light" icon to enter the color/night light setting interface. Slide the color panel to choose the color you like, or you can choose the colorful gradient mode.
- Smart life scenes support equipment customization functions.
- Manage personal information in my options.

- 6 -

Smart aroma diffuser

Voice binding settings

- Voice control: Amazon Alexa / Google Assistant / Tmall elves (jingdong ding-dong) / Tencent xiaowei / nugu / baidu xiaodu / Tencent cloud dingling
- Take Amazon Alexa as an example
- Follow the instructions of Amazon Alexa smart speaker to complete the network configuration.
 - Bind the "Smart Life" account to Alexa (as shown in the figure below).
 - Click "Skills" in the menu and search for "Smart Life". Select "Smart Life" in the search results and click "ENABLE" to enable "Skill".
 - On the new page, enter your Smart Life APP account and password, and correctly select the country where your account belongs, and then click "Link Now" to bind your smart life account. The country, account number and password must be consistent with the content registered in Smart Life APP. After the account is successfully bound, click "X" in the upper left corner to return to the Alexa APP.

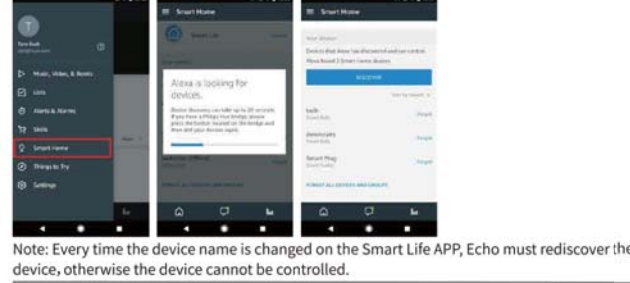


- 7 -

Smart aroma diffuser

Control your smart device with Echo

1. Discover the device: Before controlling the device, Echo needs to discover the device first. You can say to Echo: "Alexa, discover devices". Echo will scan the devices configured through the Smart Life APP. After waiting for about 20 seconds, Echo will feedback the scan result. You can also click "DISCOVER" on the Smart Home page to discover the devices, and the discovered devices will be displayed in the list.
2. Control the device by voice: Now you can use Echo to control your smart device. The device can be controlled by the following commands:
- Alexa, turn on/off light. (Switch light)
 - Alexa, set light to green. (light color adjustment)
 - Set light to 10% or 100%. (Light brightness adjustment)
 - turn on/off diffuser. (Switch diffuser)
 - Set diffuser to large/small. (Fog adjustment)



Note: Every time the device name is changed on the Smart Life APP, Echo must rediscover the device, otherwise the device cannot be controlled.

- 8 -

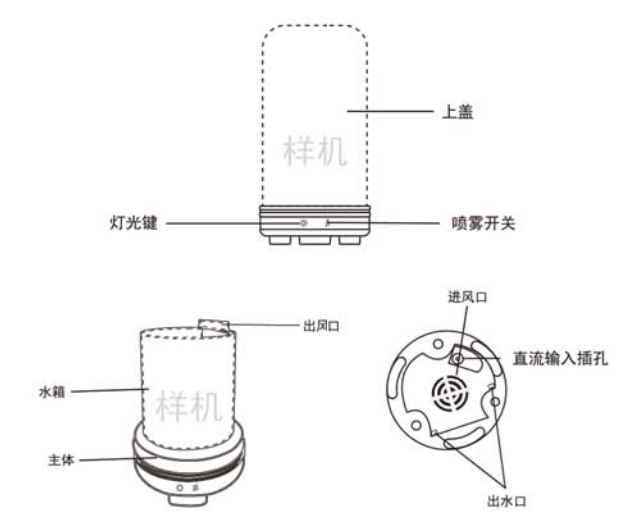
Smart aroma diffuser

96mm X 105mm

智能香薰机使用说明书

为确保正确操作, 请在使用本产品前仔细阅读本说明书, 请将本产品放在安全的地方, 以备将来参考。

该香薰机采用超声波原理, 可将在水箱内的水和精油雾化, 产生一种凉爽、湿润、芳香的氛围。



智能香薰机

产品规格参数

型号	产品尺寸	产品净重	材质
YMM901W	91 x 204mm	大约 536g	PP/陶瓷
YMM902W	91 x 230mm	大约 540g	PP/陶瓷
YMM903W	150 x 170mm	大约 400g	PP/藤艺
YMM905W	168.5 x 215mm	大约 536g	PP/藤艺
YMM906W	98 x 245mm	大约 600g	PP/藤艺
YMM908W	145 x 295mm	大约 375g	PP/藤艺
YMM909W	153 x 188mm	大约 455g	PP/铁艺
YMM910W	120 x 150mm	大约 335g	PP/铁艺
YMM912W	120 x 198mm	大约 335g	PP/铁艺
YMM913W	120 x 235mm	大约 639g	PP/陶瓷
YMM914W	120 x 235mm	大约 571g	PP/陶瓷
YMM915W	120 x 235mm	大约 549g	PP/陶瓷
YMM916W	120 x 235mm	大约 667g	PP/陶瓷
YMM917W	120 x 235mm	大约 640g	PP/陶瓷
YMM918W	120 x 235mm	大约 605g	PP/陶瓷
YMM919W	120 x 235mm	大约 516g	PP/陶瓷
YMM920W	110 x 235mm	大约 471g	PP/陶瓷
YMM921W	110 x 235mm	大约 441g	PP/陶瓷
YMM930W	90 x 204mm	大约 297g	PP/竹材
YMM931W	90 x 204mm	大约 297g	PP/竹材

- 2 -

智能香薰机

产品规格参数

型号	产品尺寸	产品净重	材质
YMM940W	90x 198mm	大约 297g	PP/铁艺
YMM941W	90 x 198mm	大约 297g	PP/铁艺
YMM942W	90 x 198mm	大约 297g	PP/铁艺
YMM1002W	161 x 150mm	大约 320g	PP

水箱容量	120mL(YYM901-942W) / 300mL(YYM1002W)
LED 颜色	多色可选
输入/输出	AC100-240V 50/60Hz DC24v 500mA
配件	电源适配器 说明书
喷雾频率	2.45 MHz 超声波
雾量输出	小雾 / 大雾

- 3 -

智能香薰机

基本操作

- 将智能香薰机平放在平面上, 取下盖子, 然后将适配器连接到DC插座。
- 先将水装入杯子容器内, 再将水倒入至香薰机水箱内, 如果需要香薰, 可以将水箱内滴入几滴精油。
- 将水箱盖盖好, 然后将交流适配器连接到交流插座上。
- 开关键: 小/大雾切换, 长按直接关闭。
- 灯光键: 七彩夜灯键, 设定你想要的七彩夜灯颜色 (国家: 明亮-暗暗), 长按关闭夜灯。

注意

- 水箱内的水雾化完后, 智能香薰机会自动关闭。
- 建议使用纯净水或蒸馏水, 注意水箱水位不能超过最大容量。
- 避免让儿童靠近, 防止水流入, 造成危险。
- 智能香薰机必须平放在平面上使用, 远离发热源及潮湿的使用环境。

- 4 -

智能香薰机

智能APP使用说明



(涂鸦智能)



(智能生活)

兼容IOS 8.0 + 和 Android 4.4 +

- 使用移动设备扫描上二维码或在应用市场下载并安装应用。
- 并按APP界面提示注册账号或使用已有账号登录。

- 5 -

智能香薰机与APP连接方法

- 将设备连接电源上, 打开APP应用程序。
- 点击页面右上角的 "+" 或选择 "手动添加" -> 小家电 -> 香薰机 (Wi-Fi)。
- 重置智能香薰机, 蓝色指示灯在高速闪烁。
- 选择 2.4GHz Wi-Fi 网络, 输入密码, 点击 "确认"。
- 等待智能香薰机连接成功。
- 点击完成。

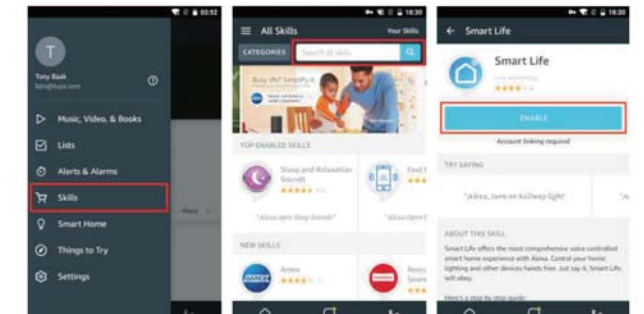
- 情景设置: 轻触 "喷雾开关" 图标进入喷雾设置界面, 轻触 "开启喷雾", 点击中间圆形的图标调整喷雾量, 点击 "定时开" 图标选择模式 (倒计时 1H-24H-ON)。
- 夜灯七彩设置: 轻触 "灯光" 图标进入夜灯七彩设置界面, 滑动颜色条选择您喜欢的颜色, 或者您可以选择七彩渐变模式。
- 智能生活: 智能设备支持场景定制化功能。
- 在我的选项管理个人信息。

- 6 -

智能香薰机

语音绑定设置

- 语音控制: Amazon Alexa / Google Assistant / 天猫精灵 / 京东叮咚 / 腾讯小微 / 百度 / 百度 / 百度
- 以Amazon Alexa为例
- 按照Amazon Alexa语音助手说明设置设备完成。
 - 绑定 "智能生活" 账号到Alexa (如下图所示)。
 - 在菜单中点击 "Skills", 然后搜索 "Smart Life", 在搜索结果中选择 "Smart Life", 点击 "ENABLE" 来启用 Skill。
 - 在前页面中, 输入您的智能生活APP账号和密码, 并正确选择您的设备所属国家, 然后点击 "Link Now" 来绑定您的智能生活账号, 国家, 账号, 密码必须与智能生活APP中注册的内容一致, 账号绑定成功后, 点击左上角的 "X" 回到Alexa APP。

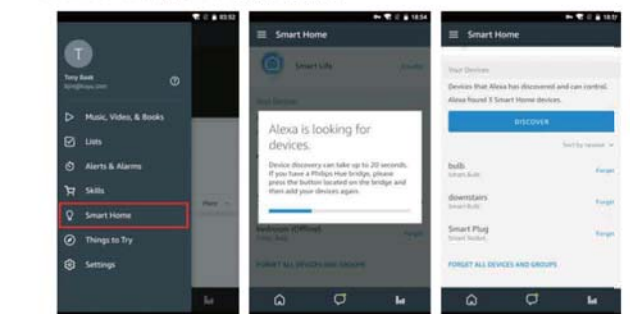


- 7 -

智能香薰机

用 Echo 控制您的智能设备

1. 发现设备: 控制设备前, Echo需要先发现设备, 你可以对 Echo 说: "Alexa, discover devices". Echo 会扫描通过智能生活 APP 配置好的设备, 等待约 20 秒之后, Echo 会反馈扫描的结果, 您也可以点击 Smart Home 页面点击 "DISCOVER" 来发现设备, 被发现的设备会显示在列表里。
2. 通过语音控制设备: 现在, 您可以使用 Echo 控制您的智能设备了, 您可以通过以下指令来控制:
- Alexa, turn on/off light. (开关灯)
 - Alexa, set light to green. (灯变绿色)
 - Set light to 10% or 100%. (调节灯光亮度)
 - turn on/off diffuser. (开关雾化)
 - Set diffuser to large/small. (调节大雾模式)



注: 每次在智能生活 APP 上更改设备名字后, Echo 必须重新发现设备, 否则不能对设备进行控制。

- 8 -

智能香薰机

:

FCC WARNING

This device complies with part 15 of the FCC Rules. Operation is subject to the following two conditions: (1) this device may not cause harmful interference, and (2) this device must accept any interference received, including interference that may cause undesired operation.

Any changes or modifications not expressly approved by the party responsible for compliance could void the user's authority to operate the equipment.

NOTE: This equipment has been tested and found to comply with the limits for a Class B digital device, pursuant to Part 15 of the FCC Rules. These limits are designed to provide reasonable protection against harmful interference in a residential installation. This equipment generates, uses and can radiate radio frequency energy and, if not installed and used in accordance with the instructions, may cause harmful interference to radio communications.

However, there is no guarantee that interference will not occur in a particular installation.

If this equipment does cause harmful interference to radio or television reception, which can be determined by turning the equipment off and on, the user is encouraged to try to correct the interference by one or more of the following measures:

- Reorient or relocate the receiving antenna.
- Increase the separation between the equipment and receiver.
- Connect the equipment into an outlet on a circuit different from that to which the receiver is connected.
- Consult the dealer or an experienced radio/TV technician for help.

To maintain compliance with FCC's RF Exposure guidelines, This equipment should be installed and operated with minimum 20cm distance between the radiator and your body: Use only the supplied antenna.