

WIFI Dome Camera

Quick Start Guide

Official Website: xvimtech.com

Tech Support: 800-485-2154

Email: xvimcctv@hotmail.com



EMAIL



XVIM Official Website



Scan QR Code to register warranty and apply
for extended extra 12 months warranty

Product overview



N1010



N1070

(Please compare with the actual item)

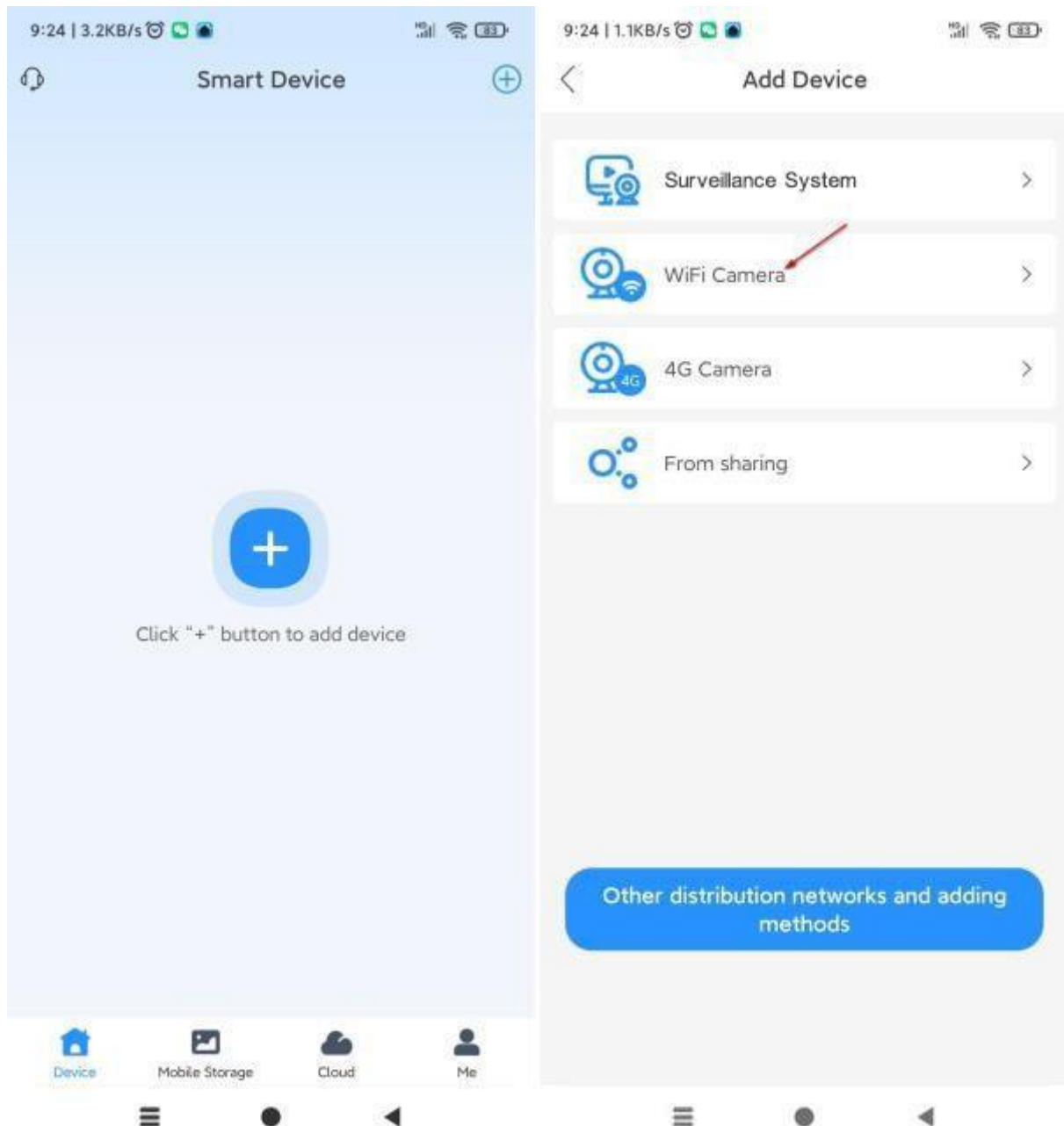
Download the app

Please scan the QR Code, or search the app named “HoMeYe Pro” on app store or Google play.

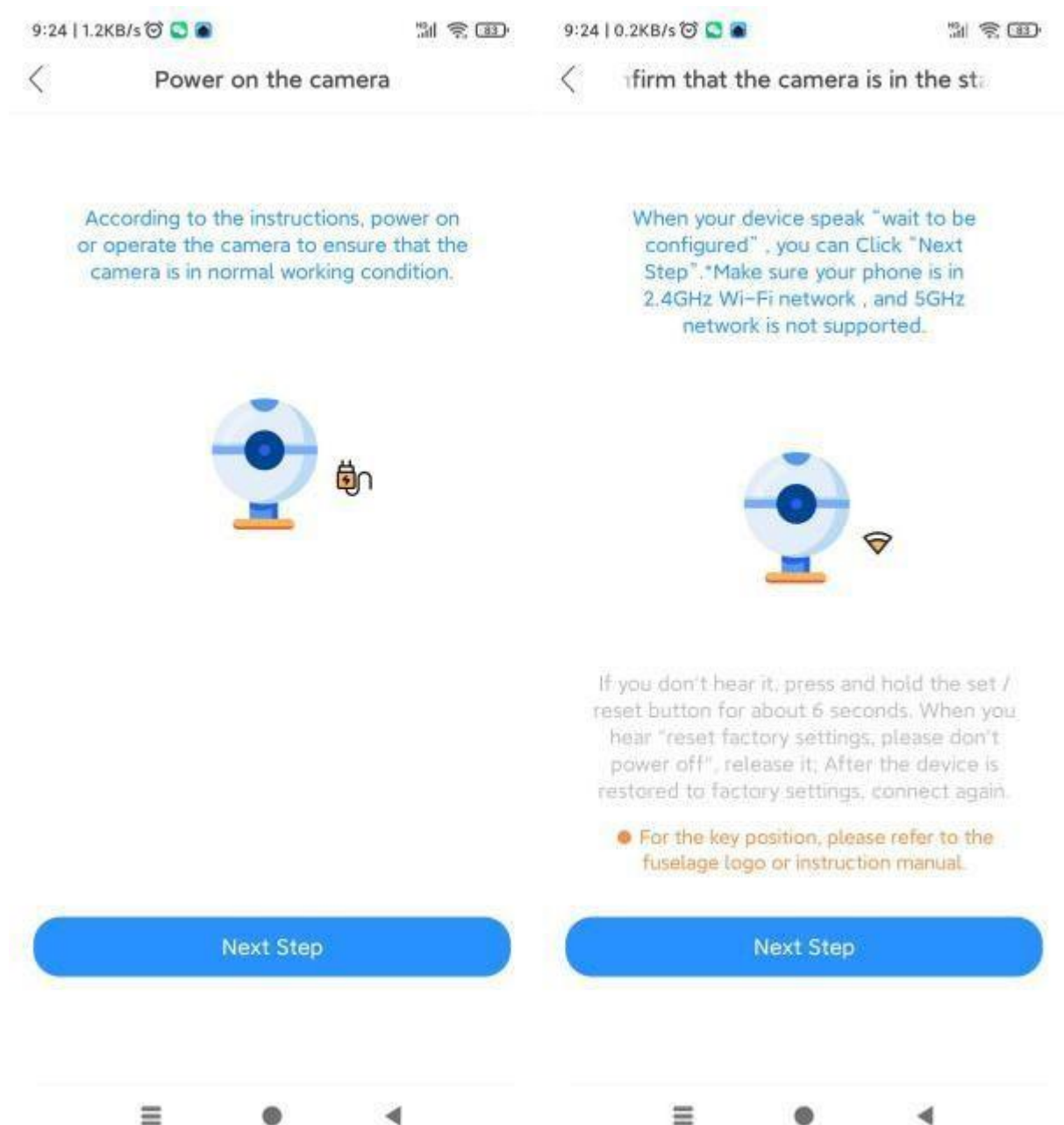


Install the app, click sign up to register an account and set your login password

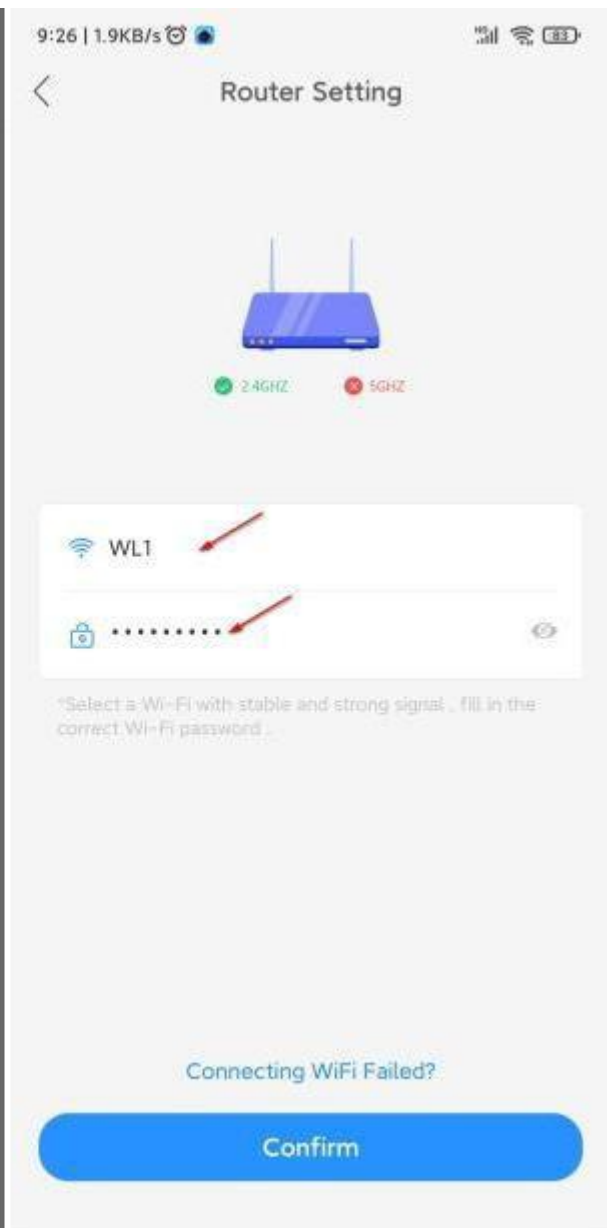
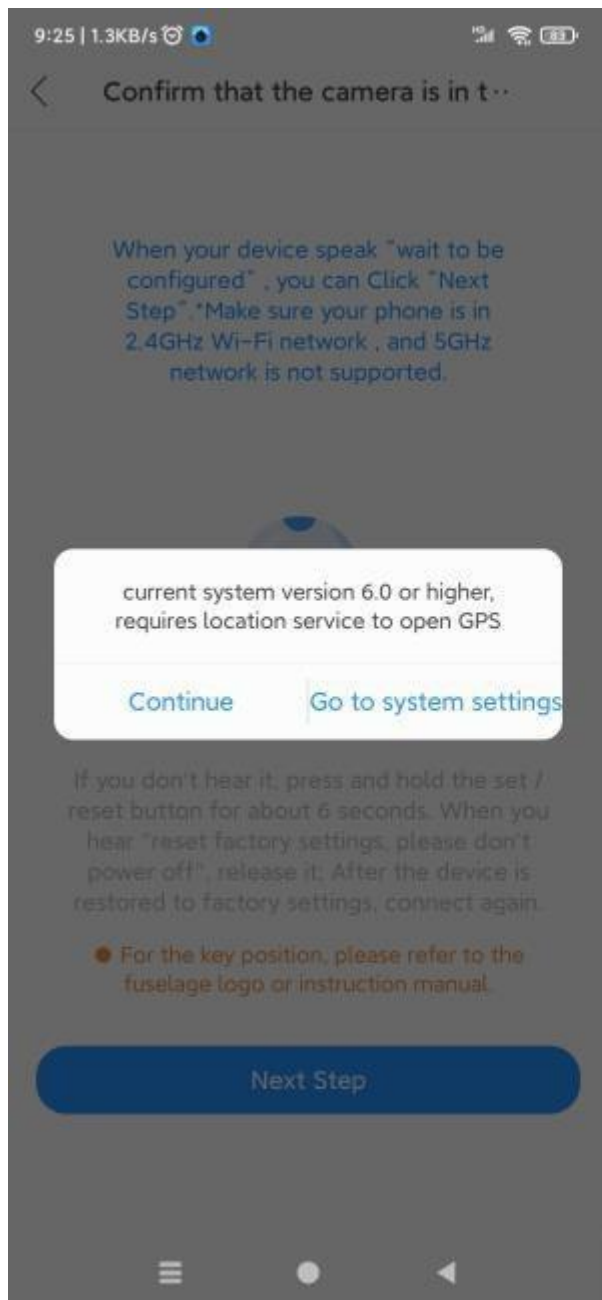
Login with your account, and click + to add device, then click add WIFI camera



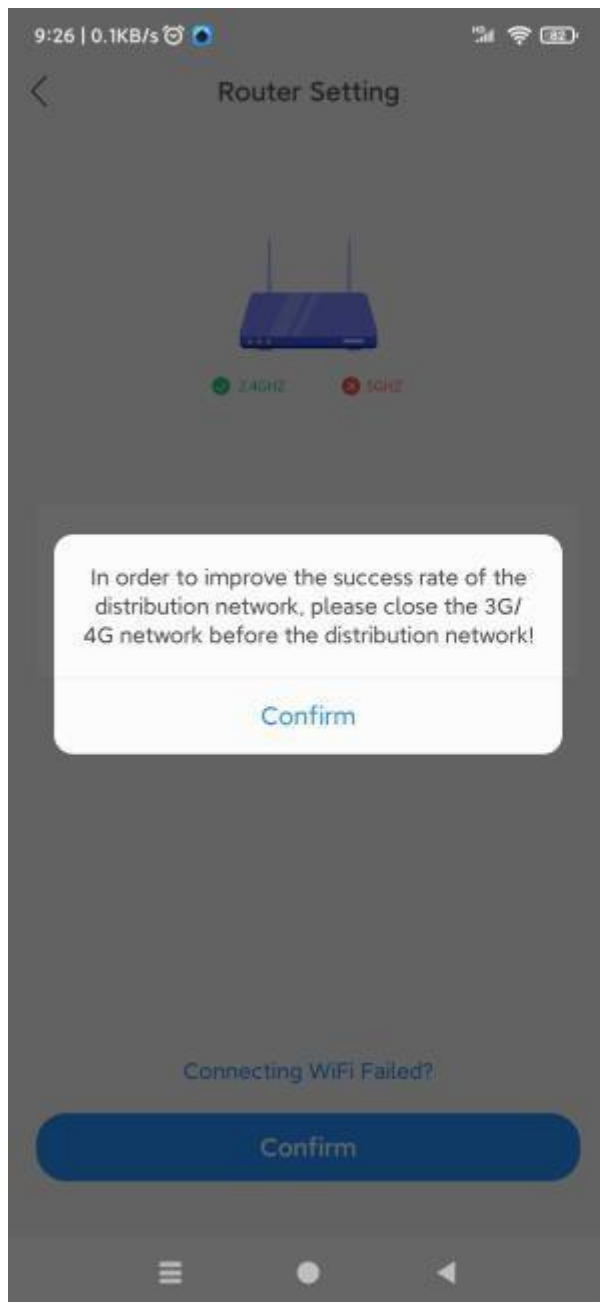
Device prompt to power on the camera to ensure camera working at normal condition, click next . whenyou hear prompts sound that wait to be configured , please click next step



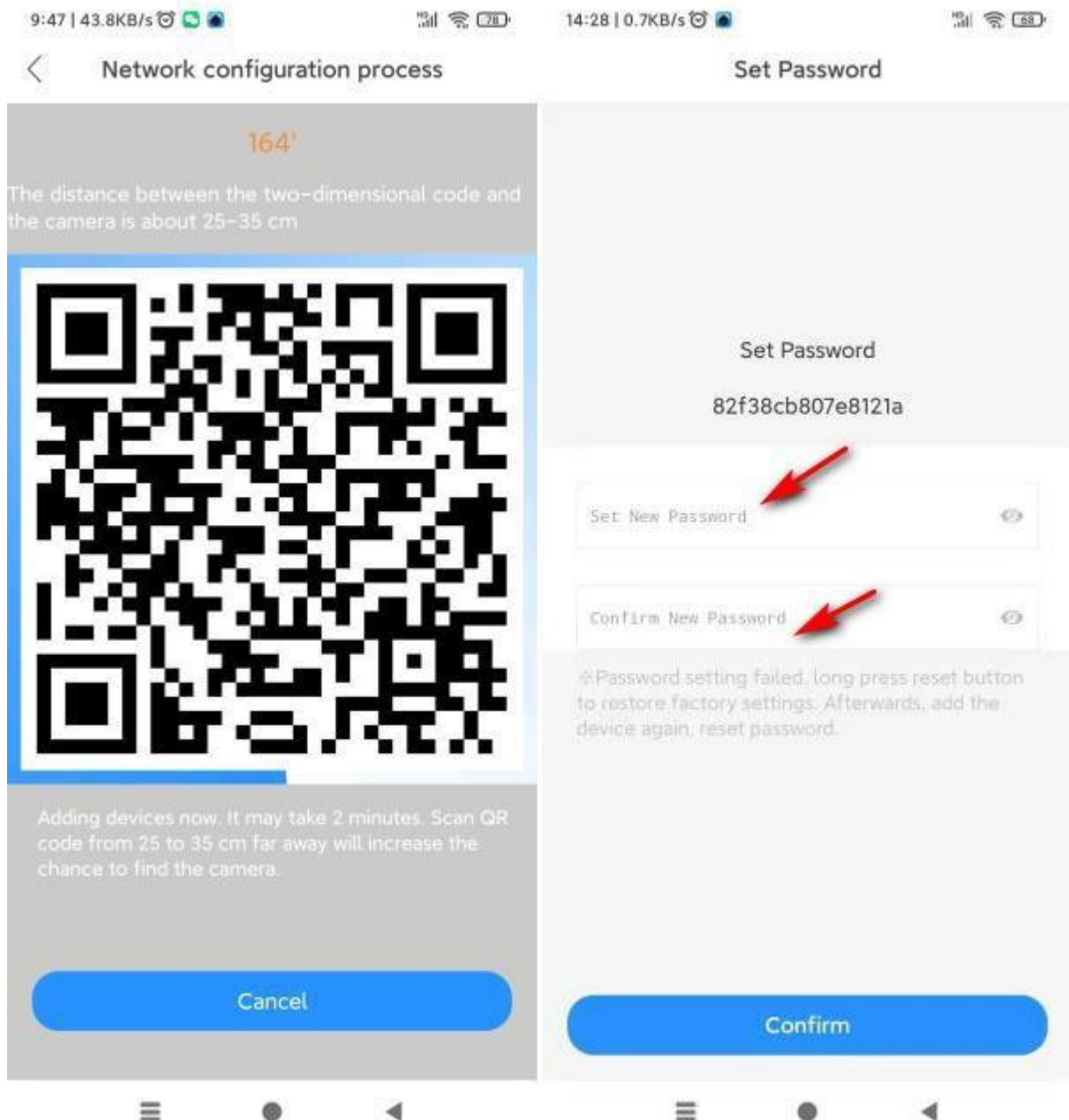
Please note the camera only support 2.4GHz WIFI, 5G WIFI not supported. Input WIFI name and password and click confirm



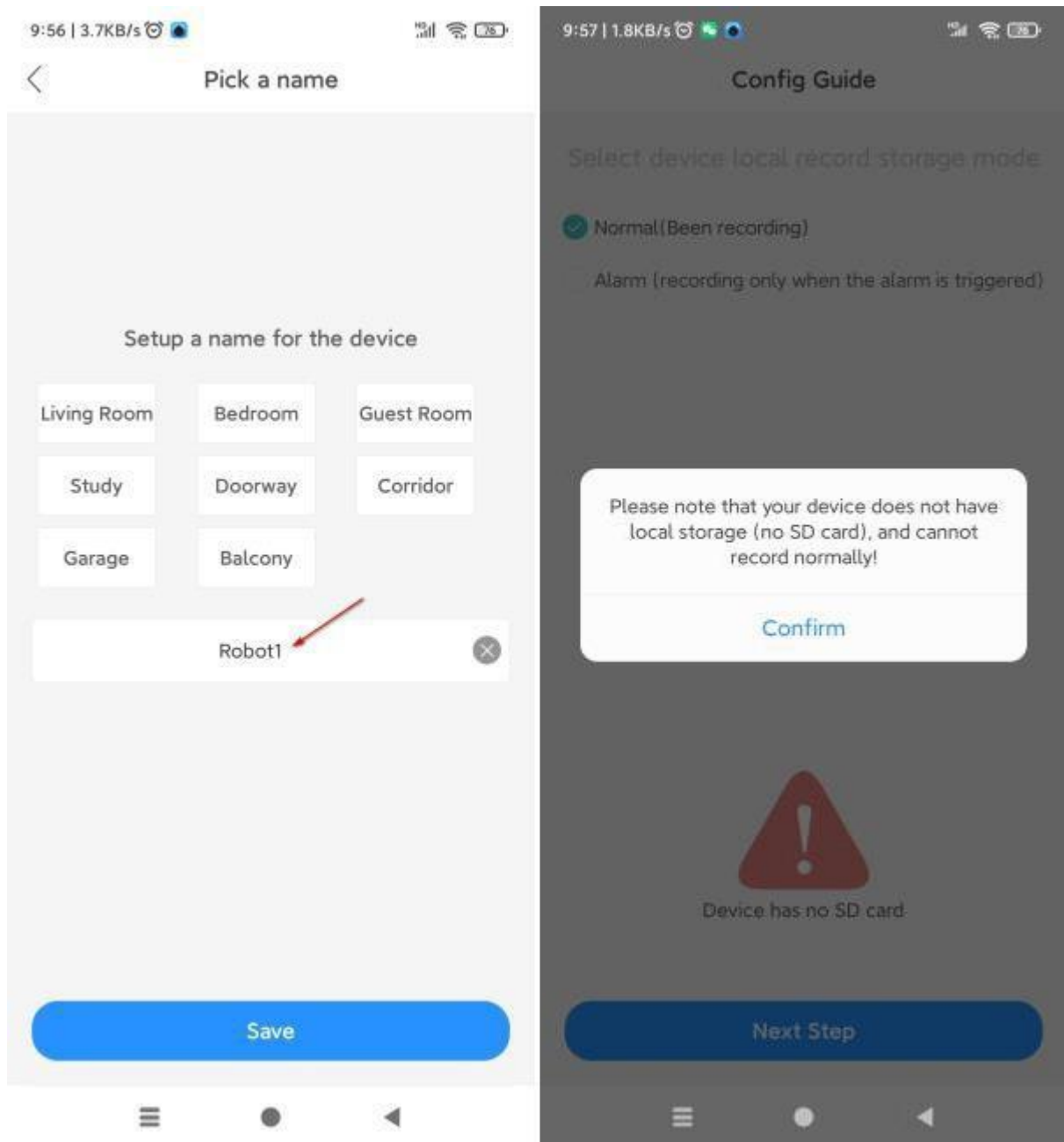
App remind to close the 3G/4G network before the distribution network, then put the QR code toward the device keep a distance of $9\frac{3}{4}$ " to $13\frac{3}{4}$ "



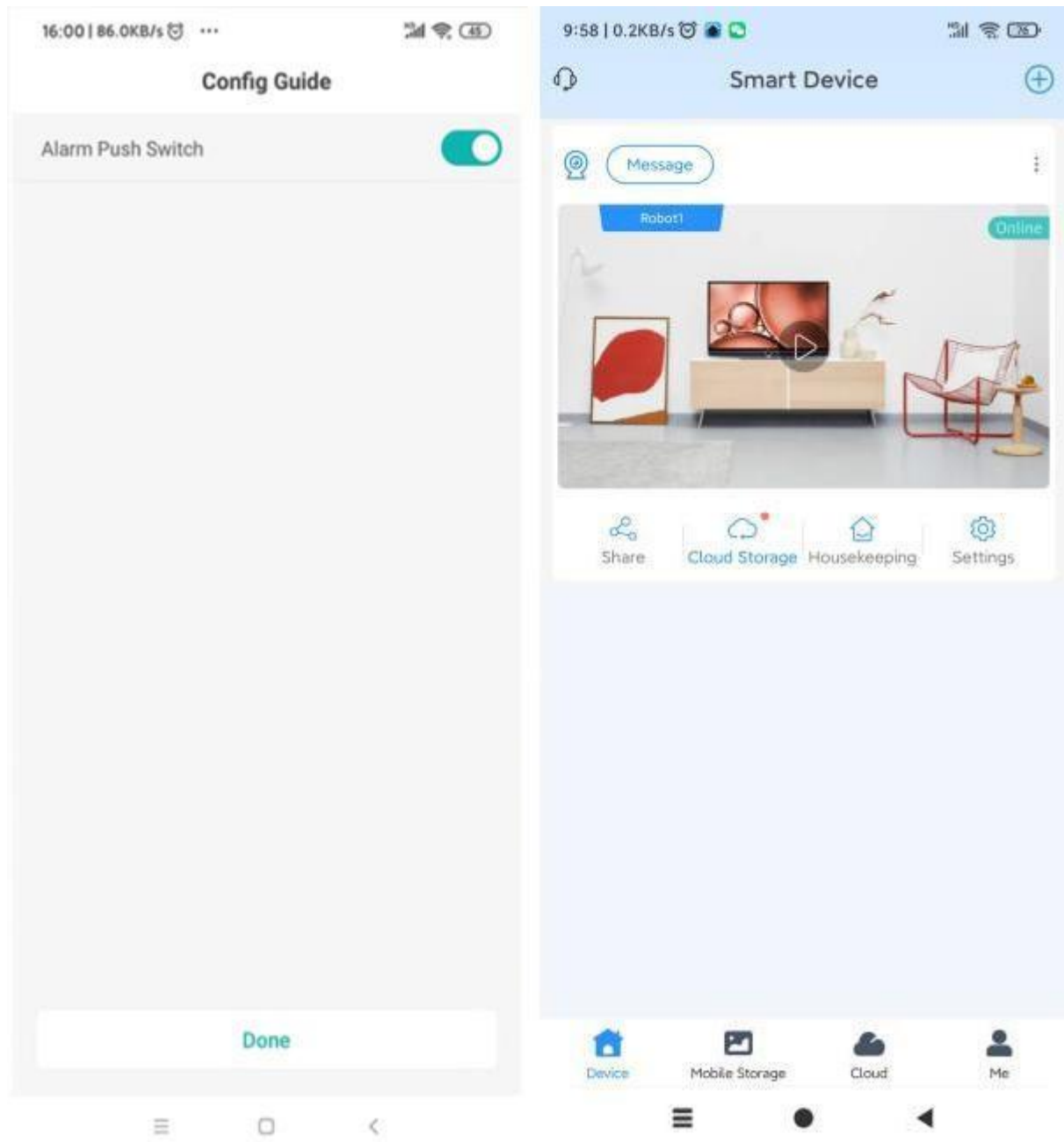
When hearing “configuration successful”, window will pop up a page to set private password which can’t too easy and must be contain or above 8 characters



Pick a name for the device or you also can setup a name. please remember to save it . if you don't insert a storage card into the device at first, the device will appear it can't record normally

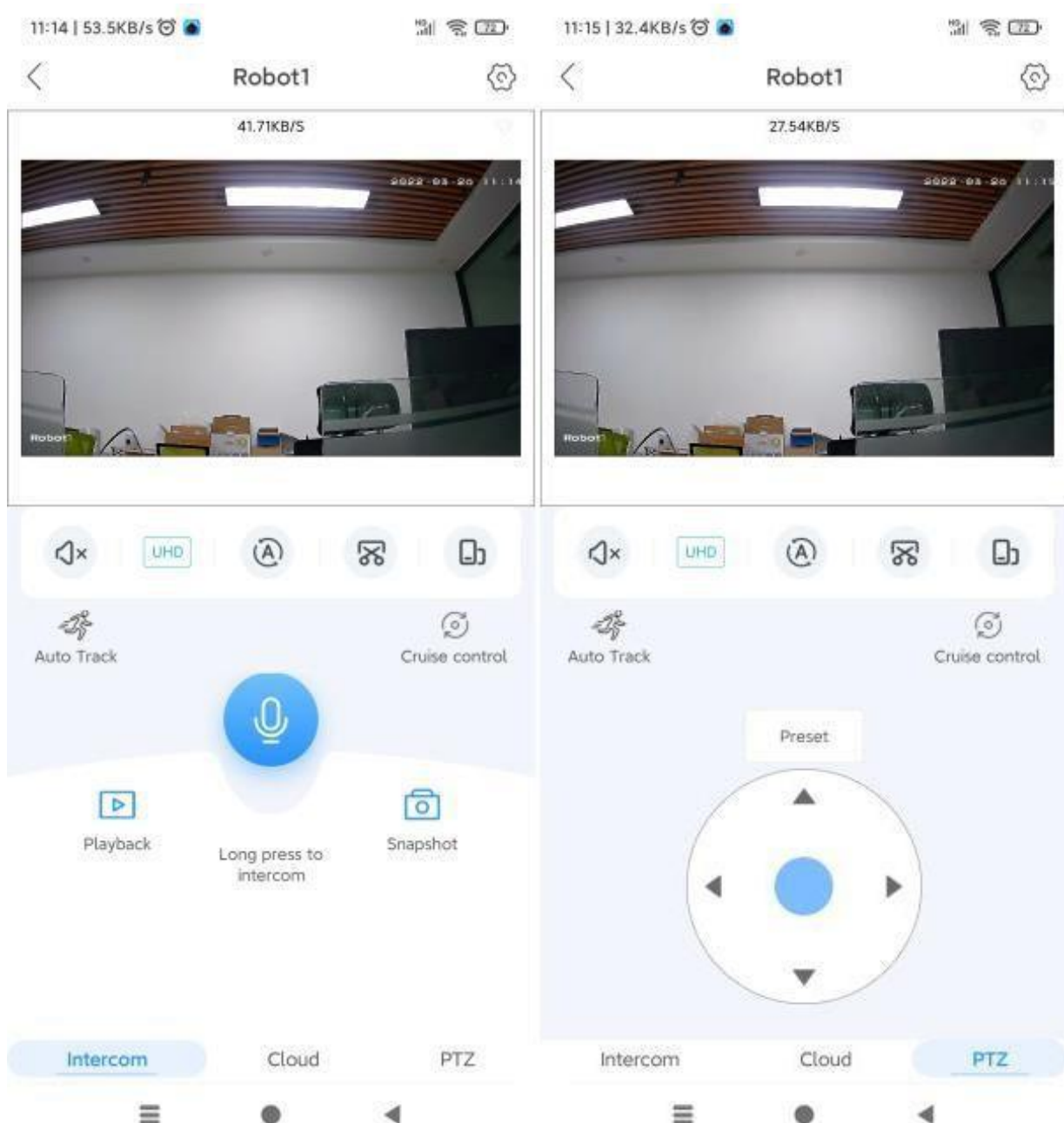


Config guide pop to open alarm push switch, click done , configuration guide has completely finished, the device contained page cover of snapshot appear on home page



Click  you will view the live video from camera.

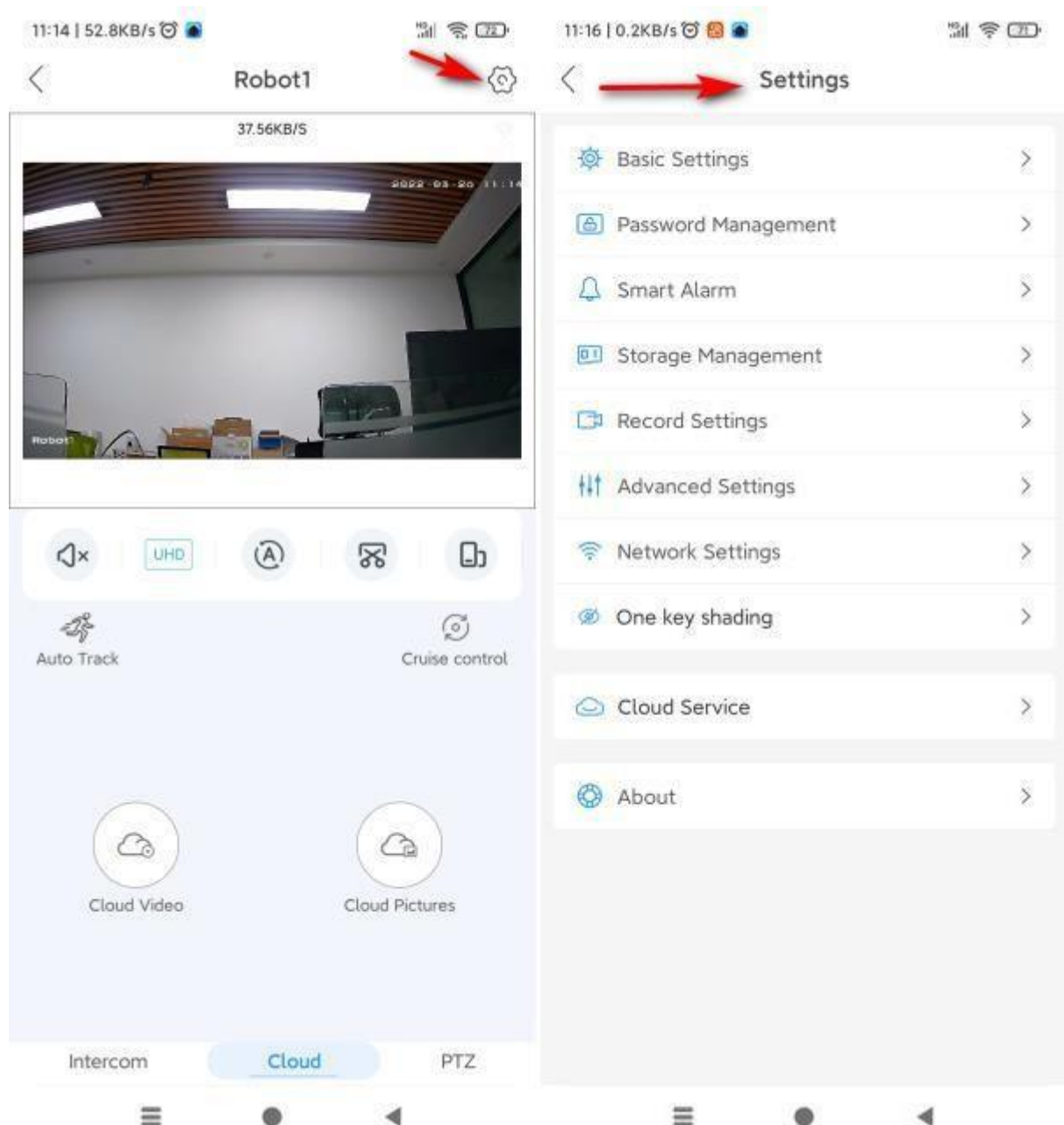
begin to enjoy yourself to access and share your device. at the same time , you can easy to adjust most function used the consoles



Attention: cruise control function need set three positions , or it will can't work

Besides the basic control key , you also can click the icon of hexagon nut to go into background to set completely.

The device also contains cloud storage service , but need pay for it per month or year



FAQ

Common problem :

Q: The camera is offline

1. Check if the power supply is working properly
2. Power off and restart the device to reconnect to the network
3. The signal coverage is weak
4. Signal interference shielding in special places

Q: How does the camera store video

1. The camera supports the FAT32 format with a maximum capacity of 128G. After the card is recognized, it automatically records, and when the storage is full, it automatically overwrites the original recording and loops recording;
2. Support opening cloud storage service to store video

Special statement

The product is subject to the actual product, the instruction manual is for reference only

Mobile phone app and device firmware version support update, users can upgrade through the app.

Do not install the product in a place where it is damp, dusty, high temperature, flammable or explosive and out of reach of children

VA20220609-100908000014

:

FCC WARNING

This device complies with part 15 of the FCC Rules. Operation is subject to the following two conditions: (1) this device may not cause harmful interference, and (2) this device must accept any interference received, including interference that may cause undesired operation.

Any changes or modifications not expressly approved by the party responsible for compliance could void the user's authority to operate the equipment.

NOTE: This equipment has been tested and found to comply with the limits for a Class B digital device, pursuant to Part 15 of the FCC Rules. These limits are designed to provide reasonable protection against harmful interference in a residential installation. This equipment generates, uses and can radiate radio frequency energy and, if not installed and used in accordance with the instructions, may cause harmful interference to radio communications.

However, there is no guarantee that interference will not occur in a particular installation.

If this equipment does cause harmful interference to radio or television reception, which can be determined by turning the equipment off and on, the user is encouraged to try to correct the interference by one or more of the following measures:

- Reorient or relocate the receiving antenna.
- Increase the separation between the equipment and receiver.
- Connect the equipment into an outlet on a circuit different from that to which the receiver is connected.
- Consult the dealer or an experienced radio/TV technician for help.

To maintain compliance with FCC's RF Exposure guidelines, This equipment should be installed and operated with minimum 20cm distance between the radiator and your body: Use only the supplied antenna.