



Type IC 6" Slim Round LED Panel Lights

Part #: PL-D6-C12



WORKS WITH

amazon alexa

works with the

Google Assistant

REMOTE ACCESS

VOICE CONTROL

SCHEDULES AND TIMERS

COLOR CHOOSE

TUNE COLOR TEMPERATURE

DIMMABLE

Intertek  
4003956







Specifications	
Cut-Out Size	6 inch
Wattage	12 watts
Input Volatge	AC120V,60Hz
Beam Angle	120°
Light Sourece	SMD LED
Color Temperature	RGB W2700K-6000K
CRI	80Ra
Lumens Output	900±5%
Lumen Efficiency	75lm/w
Halogen Equiv.	95 watts
Dimmable	100%-5% (110V only)
Dimming Tech.	WIFI BLE
Cerification	cETLus,Energy Star
Power Factor	>0.9
Projected Life	50,000hrs at 70% Light Output
Warranty	3 years
Approved Location	Damp Locations
IC Rated	Yes
Air Tight	Yes

**Housing**  
Durable die-casting aluminum lamp housing with excellent heat dissipation,provide maximum airflow for the SMD LED light source.

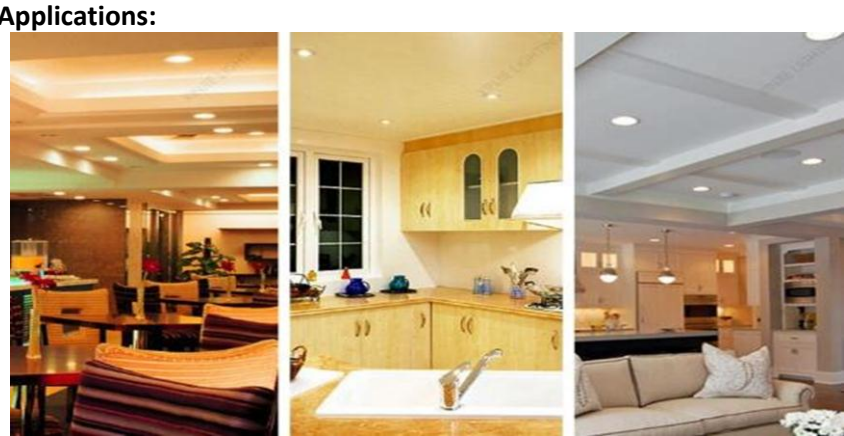
**LED Characteristics**  
This fixture contains SMD2835 LED module that offer high light color uniformity, 12 watts up to 950 lumens;

**Dimming**  
panel light is dimmable from 100% down to 5% smoothly,  
It is a smart speaker and mobile phone APP wireless dimming.

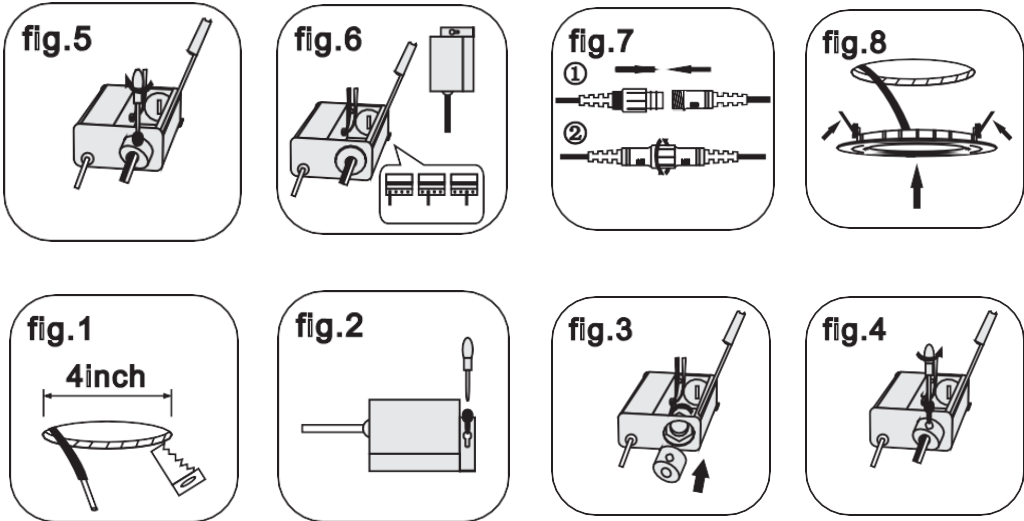
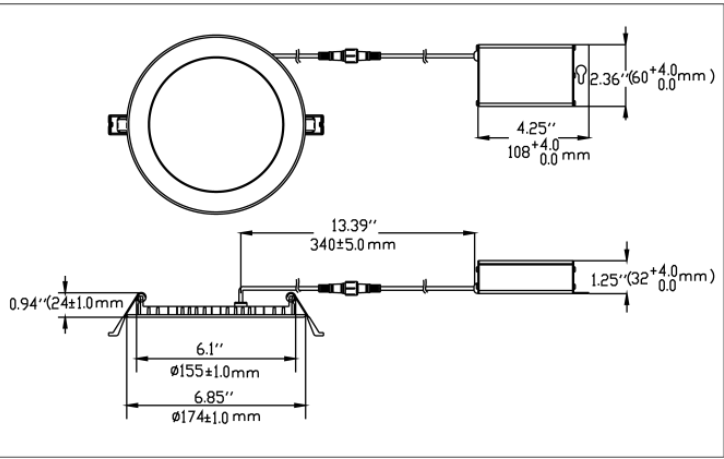
**Mounting**  
Includes two spring loaded clips to attached to any ceiling material. Easy recessed installation without needing a stand pot light can.

**LED Driver**  
Iron metal driver box with junction box and a reliable isolated constant current dimmable class II electronic LED driver inside.

**Quick Connect push-in terminals**  
Three “Quick connect” push-in terminals for fast and easy wiring. Operating Temperature: -20°C~40°C (-4°F~104°F)



Dimensions & Installation



Ordering Guide

PL-D6-A12

Color Temperature

RGB

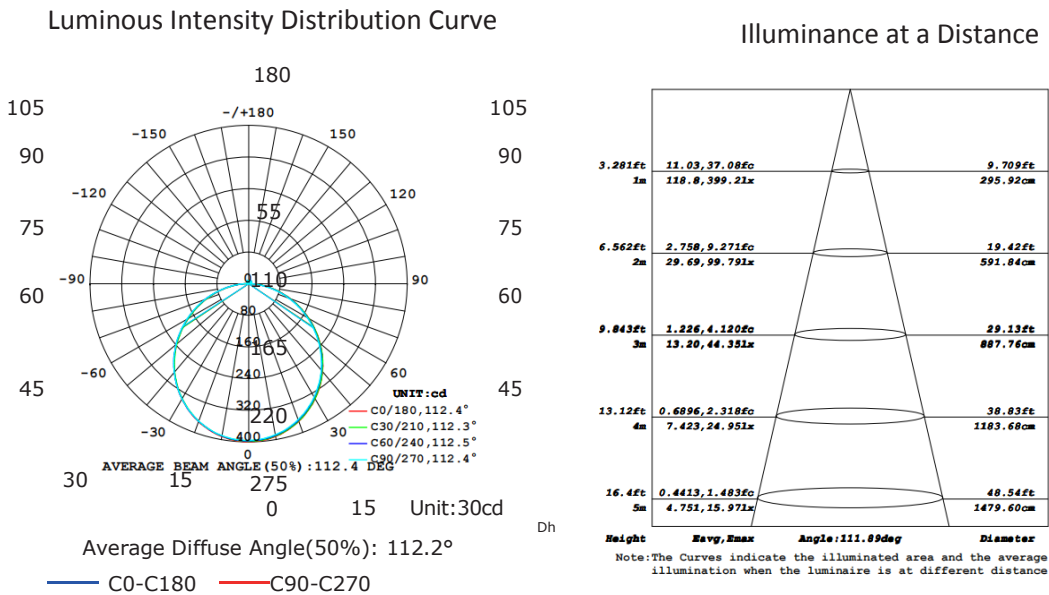
2700K

6000K

Housing Color

WH:White

BK:Black



\*Due to our continued efforts to improve our products, product specifications are subject to change without notice.

**FCC Warning**

This device complies with part 15 of the FCC rules. Operation is subject to the following two conditions: (1) this device may not cause harmful interference, and (2) this device must accept any interference received, including interference that may cause undesired operation.

Changes or modifications not expressly approved by the party responsible for compliance could void the user's authority to operate the equipment.

NOTE: This equipment has been tested and found to comply with the limits for a Class B digital device, pursuant to part 15 of the FCC Rules. These limits are designed to provide reasonable protection against harmful interference in a residential installation. This equipment generates uses and can radiate radio frequency energy and, if not installed and used in accordance with the instructions, may cause harmful interference to radio communications. However, there is no guarantee that interference will not occur in a particular installation. If this equipment does cause harmful interferenceto radio or television reception, which can be determined by turning the equipment off and on, the user is encouraged to try to correct the interference by one or more of the following measures:

- Reorient or relocate the receiving antenna.
- Increase the separation between the equipment and receiver.
- Connect the equipment into an outlet on a circuit different from that to which the receiver is connected.
- Consult the dealer or an experienced radio/TV technician for help.

**Radiation Exposure Statement**

This equipment complies with FCC radiation exposure limits set forth for an uncontrolled environment. This equipment should be installed and operated with minimum distance 20cm between the radiator and your body.