

2.4G Wireless Video Doorbell

User's Manual V1.1



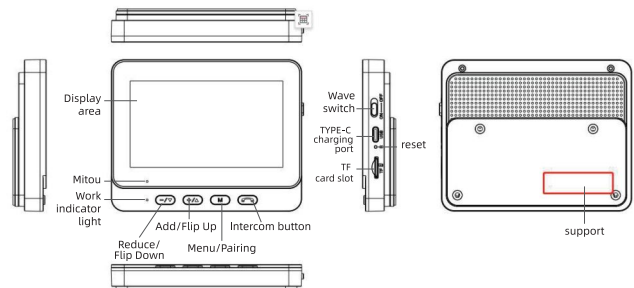
Before using this product, please read the instructions carefully, which is for reference only, The specific operation is subject to the physical object.

I.Appearance introduction:



the doorbell:

1) 2) 3) 4)



Indoor display

1) 2) 3) 4)

II.The Doorbell is paired with an indoor display:



1. Push the indoor display dial switch to "ON", long press "M" key, the display shows " connect.....30 ", which goes into the pairing mode.
2. At the same time, long press the doorbell button, the work indicator light flashing.
3. Indoor display displays " Connect.....✓ " is a successful pairing.

III.Function and key use instructions:

Icon	Illustrate	Icon	Illustrate
	Short press menu /long press pairing		Connection signal strength
	Long press to talk /short press to sleep		Intercom volume
	Turn down/Reduce		Doorbell battery
	Turn up/Increase		Monitor power
	Photo Files		Intercom icon
	Video File		Not paired/Doorbell sleeping
	Ringtone Selection		Pairing
	Set Up		Pairing Successful

1. Key function:

- 1.1. Long press "M" to enter the pairing mode
- 1.2. Tap to enter the Menu Settings. In Menu mode, click to return to the previous page.

2. Keynote

- 2.1. When the visitor rings the doorbell, the indoor unit will wake up and ring. Press "" once to answer the call, long press "" intercom, and press again to hang up,The indoor unit and outdoor doorbell will go to sleep at the same time.
- 2.2. In hibernation mode, press and hold Indoor Monitor to power on and access menu Settings.
- 2.3. In menu mode, click "" to confirm the setting.

3. - / ▼, + / ▲ functions:

- 3.1. In the video interface, press the "- / ▼" key to reduce the intercom volume, and press the "+ / ▲" key to increase the volume.
- 3.2. Menu interface, press "- / ▼" to enter the next option or reduce the volume / brightness; press "+ / ▲" to enter the previous option or increase the volume / brightness.

4. Menu function:

- 4.1. Photos: ring the doorbell, the indoor display automatically captures the photos. The system can save the photos, cycle coverage, and save the latest photos.
- 4.2. Video recording: This function requires inserting the SD card, ringing the doorbell, the display will automatically open the

video recording, cycle coverage, and save the latest video recording.

4.3. Ring tone setting: optional ding Dong music.

4.4. Settings:

Language: Press the -/▼, +/▲ keys to select the language, and press "" to confirm;

Brightness: Press the -/▼, +/▲ keys to adjust the screen brightness;

Ring volume: Press -/▼, +/▲ to adjust the ring volume;

Version number: production firmware version number;

Time setting: Press -/▼, +/▲ to adjust the time value. Press the "" key to enter the next setting. After all settings are completed, press "M" to return to save the settings.

IV、 Installation Site:

The doorbell supports two installation methods, 3M force glue fixing and screw fixing, installed on the door or smooth wall; when the doorbell is low power, can be removed for charging.

Indoor display is plugged in for a long time, placed on the easily charged desktop or suspended on the wall; the device has built-in lithium battery for emergency use of power failure. Walls, Windows, metal doors, etc. will weaken the signal strength, please try to install the equipment within the strong signal range.

V、 Matters Need Attention:

- The device is a low-power doorbell. When no one presses the

doorbell, the device enters the dormant standby mode.

- Walls, Windows, metal doors, etc. will weaken the signal strength, please try to install the equipment within the strong signal range.
- Before use, pair the doorbell with an indoor display and install it in a valid area.
- If the monitor is too close to the doorbell, it produces echoes, keep them away or lower the volume and the noise will disappear.
- The applicable working temperature of this product is -10°C~50°C. Do not use this product under too high or too low temperature.
- This product is a precision electronic product. Do not use this product in the environment of excessive moisture or water that may cause water to enter the product, so as not to affect the normal use.
- In order to better use this product, the front and side of the lens close to the glass, white wall and other reflective objects, so as not to cause the picture near bright, distant dark or white phenomenon.

FCC Caution:

This device complies with part 15 of the FCC Rules. Operation is subject to the following two conditions: (1) this device may not cause harmful interference, and (2) this device must accept any interference received, including interference that may cause undesired operation. Any changes or modifications not expressly approved by the party responsible for compliance could void the user's authority to operate the equipment.

NOTE: This equipment has been tested and found to comply with the limits for a Class B digital device, pursuant to Part 15 of the FCC Rules.

These limits are designed to provide reasonable protection against harmful interference in a residential installation. This equipment generates, uses and can radiate radio frequency energy and, if not installed and used in accordance with the instructions, may cause harmful interference to radio communications. However, there is no guarantee that interference will not occur in a particular installation.If this equipment does cause harmful interference to radio or television reception,which can be determined by turning the equipment off and on , the user is encouraged to try to correct the interference by one or more of the following measures:

- Reorient or relocate the receiving antenna.
- Increase the separation between the equipment and receiver.
- Connect the equipment into an outlet on a circuit different from that to which the receiver is connected.
- Consult the dealer or an experienced radio/TV technician for help.

To maintain compliance with FCC ' s RF Exposure guidelines, This equipment should be installed and operated with minimum distance between 20cm the radiator your body: Use only the supplied antenna.