

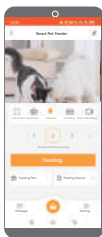


User Manual

Smart Pet Feeder Wide Angle Video Version
(Supports 2.4GHz WiFi Only)



uHome+



Products will be upgraded from time to time (including APP), please refer to the actual product!

Safety Instructions



Dispose of all packaging materials properly. Some items may be packed in plastic bags; these bags could cause suffocation. Keep them away from children and pets.



Do not immerse the base part in water at any time as it may damage electronic components like the control panel.



Suggest following the instruction in this user manual to assemble or disassemble the feeder.



Only use accessories recommended or sold by the manufacturer. The use of accessories not recommended or sold by the manufacturer may cause an unsafe condition.



Examine the feeder after installation. Do not plug in if there is water on the power cable or plug.



This product uses built-in battery as a backup power supply. We recommend to use double power supply to ensure the normal use of the product.



If the product is not used for an extended period, please fully charge the battery to reduce the rate of natural discharge.



Do not put your fingers into the food outlet or let your fingers touch the rotor.



Keep the feeder close to your router, make sure the network signal is good, it is ideal to make it within 5 meters without obstacles and walls. (Depending on the coverage of the router you are using)



Please do not use wet, canned or moist food; only put dry food into the food tank prevent from abnormal conditions even may including pet safety problems.

Warranty

◆1-Year Warranty

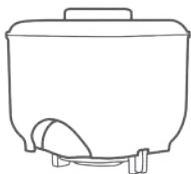
◆Lifetime Support

For guidance on product use and warranty extension, please contact our brand after-sales staff via email: [\[service@papifeed.cn\]](mailto:service@papifeed.cn) or call us at **(1) 877-290-0617** (From Monday to Friday: 8 a.m.-5 p.m.)(PST) If any questions related to orders, please contact the seller through the shopping platform.

Specifications

Product Name	Automatic pet feeder
Suit For	Cat, Dog, Rabbit, Squirrel, Small Pets
Rated Voltage	5V 1A
Product Power	5W
Power Supply	DC 5V1A Power Adapter/ Chargeable Built-in Battery
Product Size	200x200x336mm/7.87x7.87x13.23inches
Product Weight	1.5KG/ 3.36Lb
Product Capacity	6.5L /27Cups
Pet Food	Recommended to use 5-12mm/0.2-0.47in dry, non-sticky pet food
Portion Size	About 10G/0.35OZ (Varies due to density of pet food)
Support	2.4G Only/Not Supports 5G

In the Box



Food Tank x1



USB Cable x1



Adapter x1



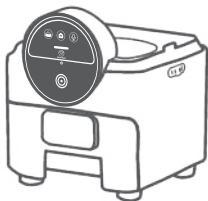
Stainless
Steel Feeding Bowl x1



Fixing Bracket x2



Bowl Tray x1



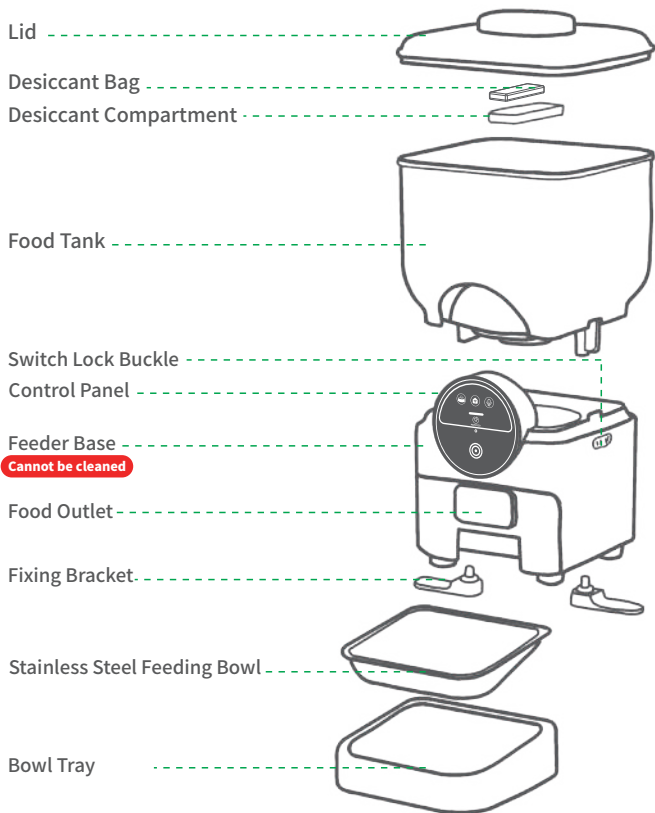
Feeder Base x1

Cannot be cleaned



Manual Instruction x1

Product Overview

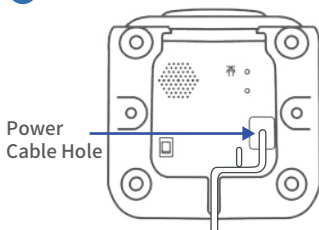


Warning: Please keep the feeder base dry and do not wash it!

Installation

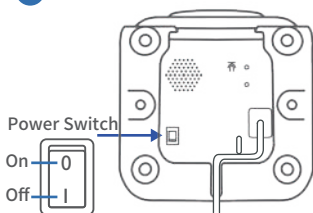
STEP 1 Connecting Power

1



- Check the bottom of the device and plug in the USB cable.

2

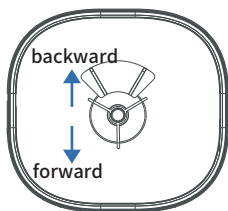


- Turn on the power switch at the bottom of the feeder.

Note: Be sure to turn on the power switch before use. Please maintain dual power supply, batteries are for backup power only

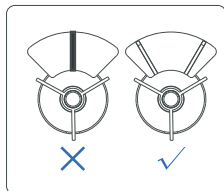
STEP 2 Assemble or Disassemble

3



- When installing the food impeller: Please pay attention to the impeller direction.

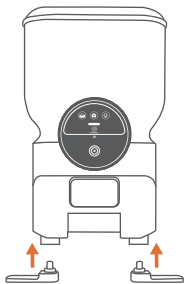
4



- Pay attention to the direction of the impeller; the impeller should not be placed in the center.

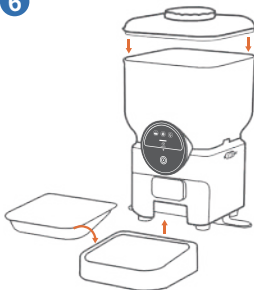
STEP 3 Assembling the Food Tray

5



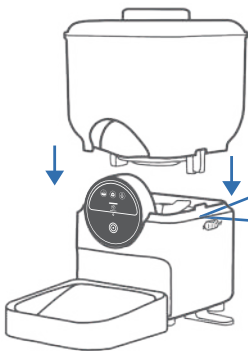
● First, install the fixing brackets from the bottom.

6



● Align the bulging of the bowl tray and the holes in the feeder base, and push up ward to connect the two. Pu on the stainless steel feeding bowl

7



The food tank can be installed only in Unlock Position

Lock ←

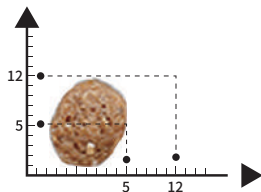
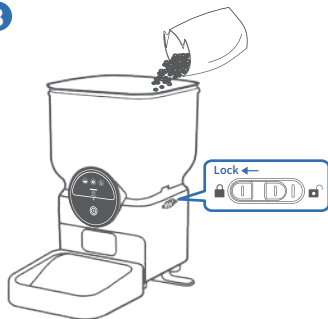


→ Unlock

● Slide the buckle to Unlock position, then insert the food tank into the feeder base, and then slide the buckle to the locked position.

STEP 4 Fill With Food

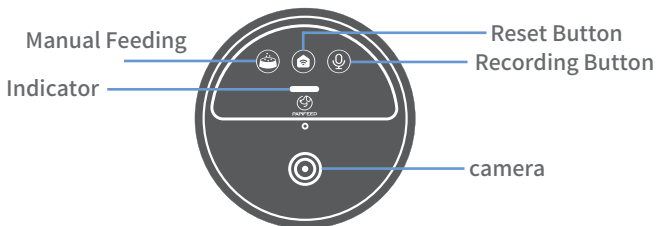
8






Note: It is recommended to use round or oval-shaped pet food, as long strips or irregular shapes such as polygons are prone to getting stuck.





- Pour in dry pet food. Put on the lid.

Product Interface and Button Description



	Recording Button	Press and hold the button for 5 seconds until the device emits a "beep-beep~" sound. Release the button, and the device will start recording. To end recording, short press the button. The device will beep to confirm, and the recording will be saved (supports recordings up to 10 seconds, overwriting the previous recording).
	WIFI Reset Button	Press and hold the button for 10–20 seconds until the device emits a "ding-dong~" sound and the red/blue lights flash alternately. This indicates the device is in network pairing mode.
	Feeding Button	Short press the button once to dispense a portion of food (manual feeding, no limit on the number of times). If a recording is saved, the device will play the audio while dispensing food.

Indicator Light Descriptions

Indicator	Status
 Red and blue lights alternating blinking	Waiting for connection
 Blue light solid	Connection successful
 Blue light blinking	Connection timed out
 Red light blinking	Low battery indication (when using battery power only)

Note: If the device remains unconnected for over 3 minutes, it will emit a "beep-beep" sound and enter the blue blinking light state. Press and hold the "WIFI" icon button for about 15 seconds to reset the device. A "ding-dong" sound will indicate a successful reset, after which you can reconnect the device.

Tutorial Video

■ You can scan the **Tutorial Video** QR code to watch how to connect.



Tutorial Video

Install the APP & Log In

■ App Installation

Download and install the "uHome+" App by scanning the QR code, or searching it on Google Play (Android)/App Store (ios).



uHome+

■ Sign up and log in

After opening the app, if you don't have an account, please register one. If you have already have, please log in directly.

Charging Method

1



● Turn on the battery switch.

2



● Connect to the power supply.

3



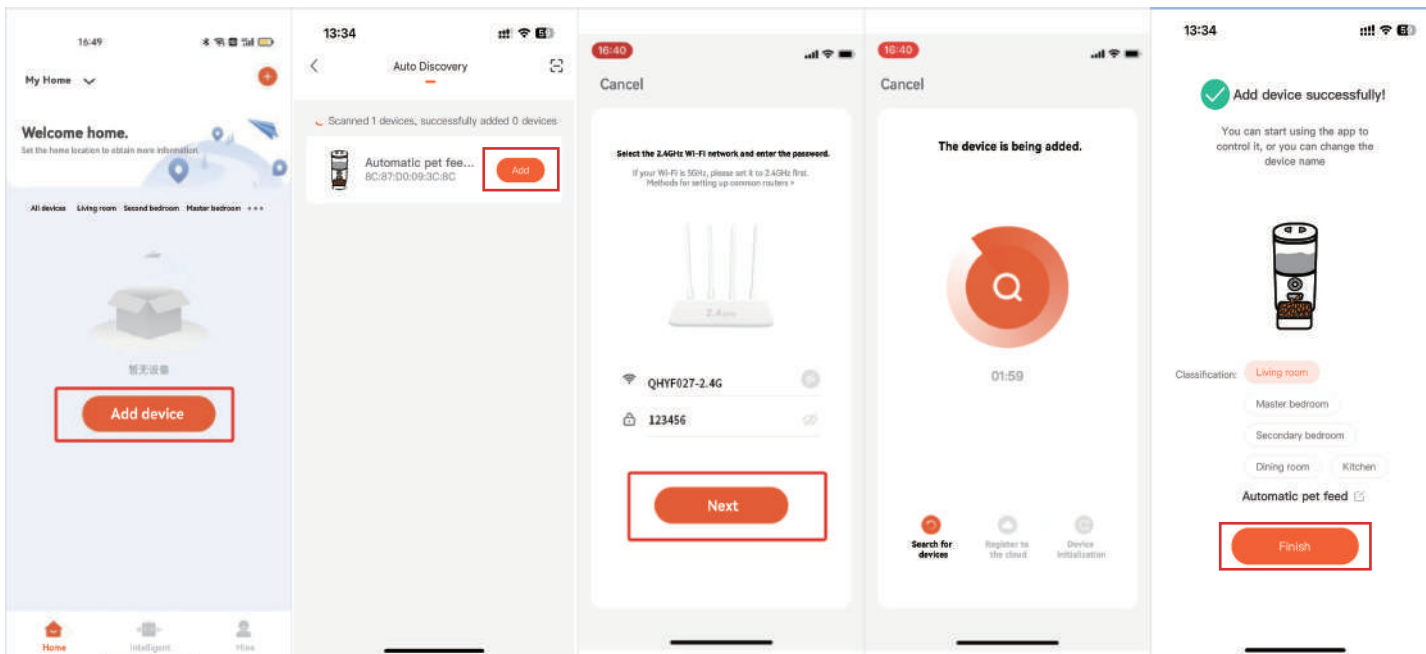
● While charging:
The red light remains solid.

4



● When fully charged:
The green light stays solid.

Enter the APP connection



Open the home page of the APP - Add a device

Add

Select 2.4G WiFi, enter the password correctly, and then click "Next".

Wait for connection

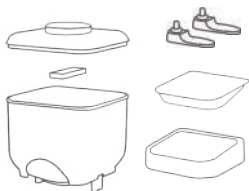
Click Finish

Tip: Due to the upgrades and updates of the "uHome+" APP, there may be slight differences between the actual operations and the above descriptions. Please follow the instructions of the current "uHome+" APP for operation.

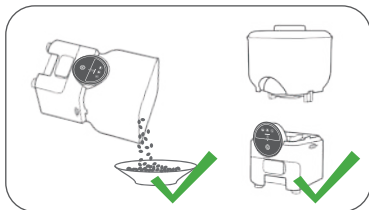
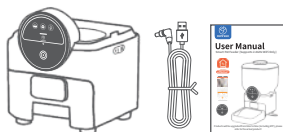
Cleaning & Care

We recommend to clean the feeder regularly for the health of your pet. The washable parts of the feeder are as follows: safety lock, lid, desiccant compartment, bowl tray, stainless steel feeding bowl.

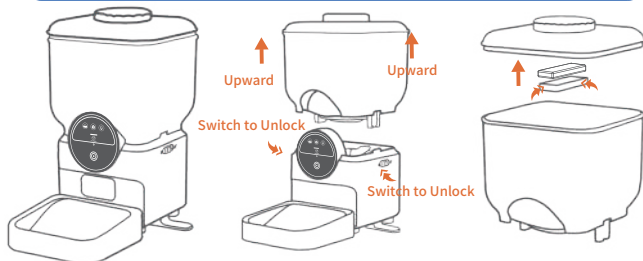
Washable Parts



Do Not Wash



When disassembling the food tank, please pour out all the food before disassembling it to avoid spilling.



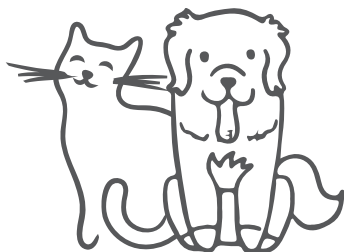
Problem	Solution
Can't connect the feeder to WiFi	1) Keep the feeder and your phone close to your router, make sure the network signal is good.
	2) Reset the feeder and reconnect.
	3) Follow the APP's instructions or our tutorial videos to add the feeder. There are more than one adding methods to choose from.
	4) Contact our after-sales team at (1) 877-290-0617 , or via email service@papifeed.cn .
WiFi connection is sporadic	1) Keep the feeder close to your router, make sure the network signal is good, it is ideal to make it within 5 meters without obstacles and walls.(Depending on the coverage of the router you are using).
	2) Make sure the power cord is properly at this point.
	3) Reset the feeder and reconnect.
The indicators are off	1) Check whether the power adapter is connected.
	2) Check if batteries are not installed when power outage occurs.
Live video not showing	1) Switch to stronger WiFi signal.
	2) If the network is poor, change the video quality from HD (high definition) to SD(standard definition).
Where are the photos and videos stored?	The screenshots and video clips are stored in the Photo Album of the APP.

Problem	Solution
The food won't come out	1) Please make sure the food in the tank is dry and food size is within 5-12mm/0.2-0.47in in diameter.
	2) Check the food tank if the chute inside or the food outlet is dirty or blocked.
	3) Check if the power adapter is connected.
	4) Check if batteries are not installed when power outage occurs
	5) If the feed request is sent within the app, please check the network status for network latency or disconnection. It is recommended to repeat the feeding a few times to check it.

Reference for Meal & Portion Settings

▲ Note:

- Below is the recommended amount of food your pet needs by each meal.
- One portion of this feeder is $\approx 15\text{g}/0.03\text{lb}$ (Varies due to density of pet food).



If the pet fail to eat up the previous programmde meal, please reduce the next meal portion.

- CAT -

Age (Months)	1-2	2-4	4-6	6-8	8-12
Suggested Feed	20-30g	30-50g	50-70g	70-80g	80-90g
Weight (Months)	2-3kg	3-5kg	5-7kg	Pregnancy	Lactation Period
Suggested Feed	25-35g	35-55g	55-85g	70-110g	120-190g

- DOG -

Dog Weight	Normal Activity	Increased Activity	Dog weight	Normal Activity	Increased Activity	Vigorous Activity
2kg	39g	45g	22kg	250g	290g	329g
4kg	66g	76g	24kg	267g	309g	351g
6kg	89g	104g	26kg	274g	318g	361g
8kg	111g	128g	28kg	290g	336g	381g
10kg	131g	152g	30kg	305g	353g	402g
12kg	150g	174g	32kg	320g	371g	422g
14kg	178g	206g	34kg	335g	388g	441g
16kg	197g	228g	36kg	350g	405g	461g
18kg	197g	228g	38kg	364g	422g	480g
20kg	233g	270g	40kg	379g	439g	496g

100% After Sales Service

We provide one year warranty for this appliance.

Please email our support team at [service@papifeed.cn], if you have any questions, attach your order number and describe the problem you met in your email. We will get back to you within 24 hours.

Also you can call us at **(1) 877-290-0617**

(From Monday to Friday: 8 a.m.-5 p.m.)(PST)



Scan for more details
WWW.papifeedpet.com

THANK YOU FOR YOUR PREFERENCE FOR PAPIFEED

If you have any problems with our product, please feel free to contact us.

 Tel: **(1) 877-290-0617** (From Monday to Friday: 8 a.m.-5 p.m.)(PST)
 Email: **service@papifeed.cn**

FC CE RoHS



Made in China

This device complies with part 15 of the FCC Rules. Operation is subject to the following two conditions: (1) This device may not cause harmful interference, and (2) this device must accept any interference received, including interference that may cause undesired operation.

Any Changes or modifications not expressly approved by the party responsible for compliance could void the user's authority to operate the equipment.

Note: This equipment has been tested and found to comply with the limits for a Class B digital device, pursuant to part 15 of the FCC Rules. These limits are designed to provide reasonable protection against harmful interference in a residential installation. This equipment generates uses and can radiate radio frequency energy and, if not installed and used in accordance with the instructions, may cause harmful interference to radio communications. However, there is no guarantee that interference will not occur in a particular installation. If this equipment does cause harmful interference to radio or television reception, which can be determined by turning the equipment off and on, the user is encouraged to try to correct the interference by one or more of the following measures:

- Reorient or relocate the receiving antenna.
- Increase the separation between the equipment and receiver.
- Connect the equipment into an outlet on a circuit different from that to which the receiver is connected.
- Consult the dealer or an experienced radio/TV technician for help.
- This equipment complies with FCC radiation exposure limits set forth for an uncontrolled environment. This equipment should be installed and operated with minimum distance 20cm between the radiator & your body.