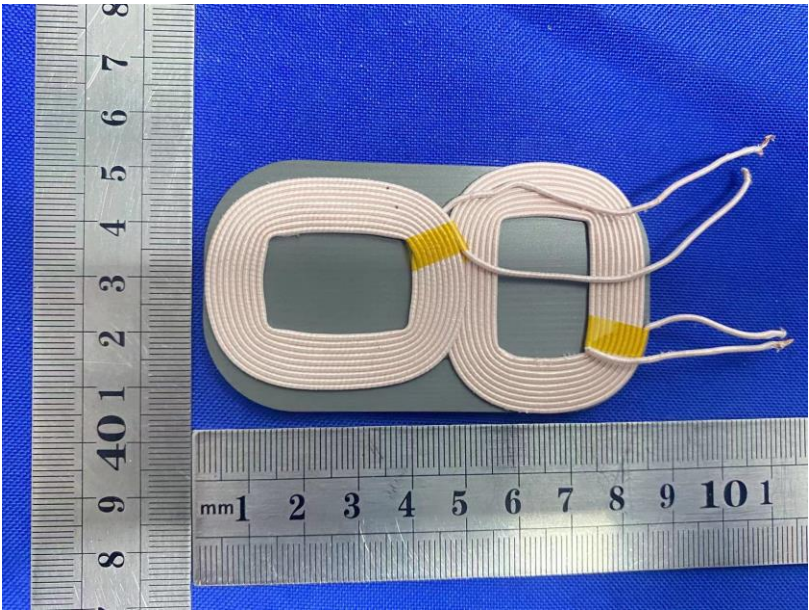
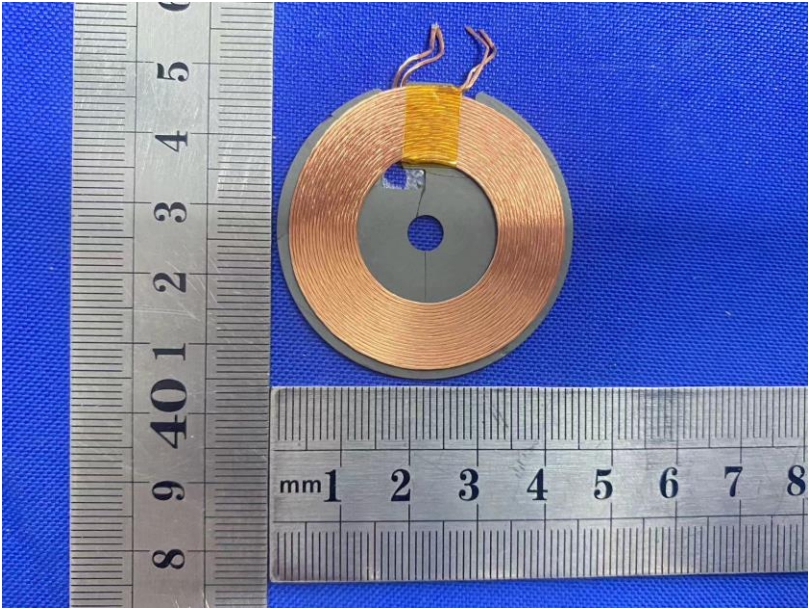


ANT PHTOT



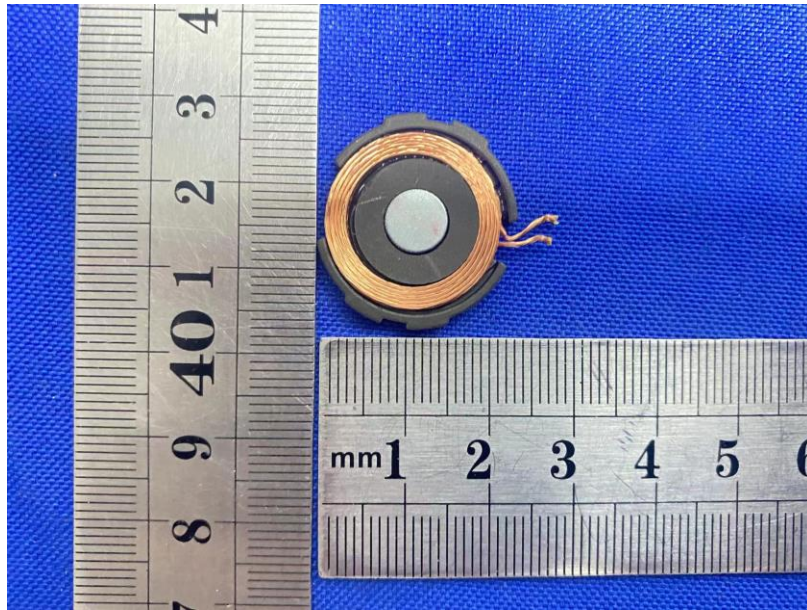
L	W	H
47mm±0.2	47mm±0.2	0.2mm±0.1

ANT PHTOT



L	W	H
39mm±0.2	39mm±0.2	0.2mm±0.1

ANT PHTOT



L	W	H
22mm±0. 2	22mm±0. 2	0. 2mm±0. 1

All measurements were performed radiated and therefore additional antenna gain documentation is not required.