

TECHNICAL SPECIFICATIONS

INPUT: 5V、9V、12V/2A(MAX)
POWER: 5W,7.5W,10W,15W(MAX)
RECEIVE DISTANCE: < 6MM

which can be determined by turning the equipment off and on, the user is

- Connect the equipment into an outlet on a circuit different from that to which

FCC Warning Statement :

This equipment generates, uses and can radiate radio frequency energy and, if not installed and used in accordance with the instructions, may cause harmful interference to radio communications. However, there is no guarantee that interference will not occur in a particular installation. If this equipment does cause harmful interference to radio or television reception, which can be determined by turning the equipment off and on, the user is encouraged to try to correct the interference by one or more of the following measures:

- Reorient or relocate the receiving antenna.
- Increase the separation between the equipment and receiver.
- Connect the equipment into an outlet on a circuit different from that to which the receiver is connected.
- Consult the dealer or an experienced radio/TV technician for help.

This equipment must be installed and operated with a minimum distance of 15 cm between the radiator and user body.



Wireless CHARGING

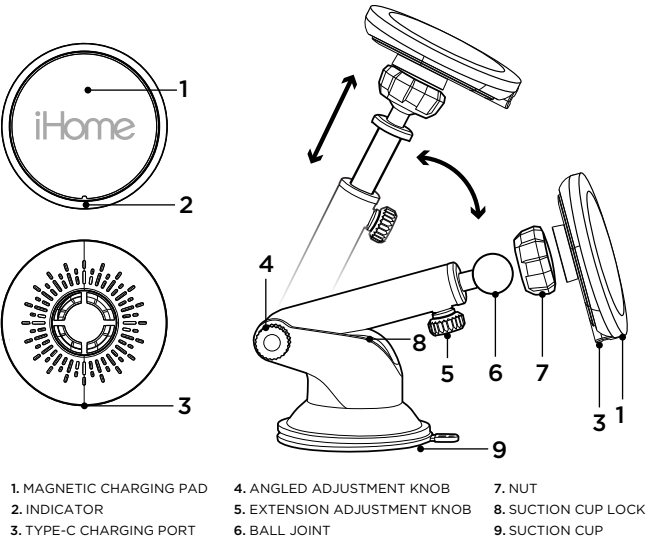


PRODUCT OVERVIEW

THE MAGSAFE COMPATIBLE WIRELESS CHARGING DASHBOARD CAR MOUNT IS A VERSATILE CAR ACCESSORY DESIGNED TO SECURELY HOLD AND CHARGE YOUR MAGSAFE COMPATIBLE IPHONE WHILE DRIVING. IT FEATURES A BUILT-IN MAGNETIC WIRELESS CHARGING PAD FOR CONVENIENT CHARGING ON THE GO.

USE 18W OR HIGHER CAR CHARGER OR POWER SOURCE TO CHARGE AT 15W CONSISTENTLY. SOLD SEPARATELY

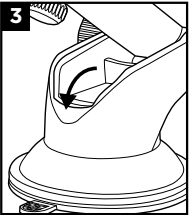
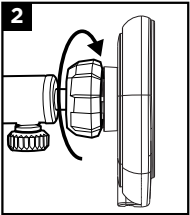
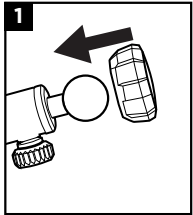
PRODUCT DETAILS



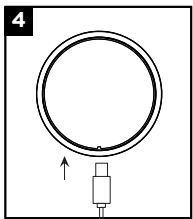
MOUNT INSTALLATION

TO INSTALL THE CAR MOUNT IN YOUR VEHICLE, FOLLOW THESE STEPS:

1. THREAD THE FIXED NUT ONTO THE BALL JOINT
2. THEN PRESS THE BALL JOINT AND NUT INTO THE CAR MOUNT BACK-TIGHTEN NUT IN VIEWING POSITION.
3. TAKE OFF PLASTIC COVER ON SUCTION CUP- PLACE MOUNT IN DESIRED POSITION, FLIP SUCTION CUP SWITCH TO LOCK



4. CONNECT THE TYPE-C CABLE INTO THE CHARGING PORT AND CONNECT THE OTHER END TO THE POWER SOURCE (USE A MINIMUM OF 18W POWER TO CHARGE AT 15W CONSISTENTLY). LED INDICATOR WILL TURN ON



5. MOUNT YOUR IPHONE 12 OR NEWER ONTO MAGNETIC MOUNT

SAFETY PRECAUTIONS

TO ENSURE SAFE USAGE OF THE CAR MOUNT WHILE DRIVING, PLEASE OBSERVE THE FOLLOWING PRECAUTIONS:

1. DO NOT OPERATE OR ADJUST THE CAR MOUNT WHILE DRIVING. SET UP THE CAR MOUNT AND MAKE NECESSARY ADJUSTMENTS BEFORE STARTING YOUR JOURNEY.
2. ENSURE THAT THE CAR MOUNT DOES NOT OBSTRUCT YOUR VIEW OF THE ROAD OR INTERFERE WITH ANY VEHICLE CONTROLS.
3. PLACE YOUR IPHONE SECURELY ON THE CHARGING PAD AND ENSURE IT IS PROPERLY ALIGNED WITH THE MAGSAFE ATTACHMENT FOR A SECURE CONNECTION.
4. ALWAYS COMPLY WITH LOCAL TRAFFIC LAWS AND REGULATIONS WHILE USING YOUR DEVICE AND THE CAR MOUNT.

TROUBLESHOOTING

IF YOU ENCOUNTER ANY ISSUES WITH THE CAR MOUNT, PLEASE TRY THE FOLLOWING TROUBLESHOOTING STEPS:

1. ENSURE THAT YOUR IPHONE IS MAGSAFE COMPATIBLE AND SUPPORTS WIRELESS CHARGING.
2. CHECK THAT THE CAR MOUNT IS SECURELY ATTACHED TO THE AIR VENT AND PROPERLY ALIGNED FOR CHARGING.
3. REMOVE ANY OBSTRUCTIONS, SUCH AS CASES OR COVERS, THAT MAY INTERFERE WITH THE MAGSAFE CONNECTION.
4. CONFIRM THAT THE CAR MOUNT IS RECEIVING POWER FROM YOUR VEHICLE'S POWER OUTLET OR USB PORT.
5. IF THE ISSUE PERSISTS, TRY USING A DIFFERENT POWER SOURCE OR CONSULT CUSTOMER SUPPORT FOR ASSISTANCE.