

App Use

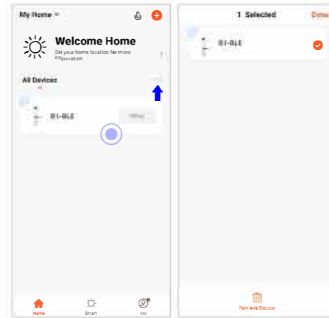
Download

Download TuyaSmart before adding device, register and log in.



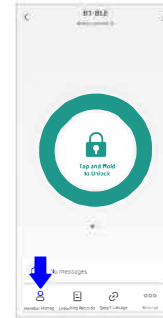
Remove Device

The device is bound to the account. If you are not the last owner of the device, please ask the last owner to remove it.



Multiple User Permissions

Relate accounts to enable your tenants or family members to obtain the permission of app to control the device.



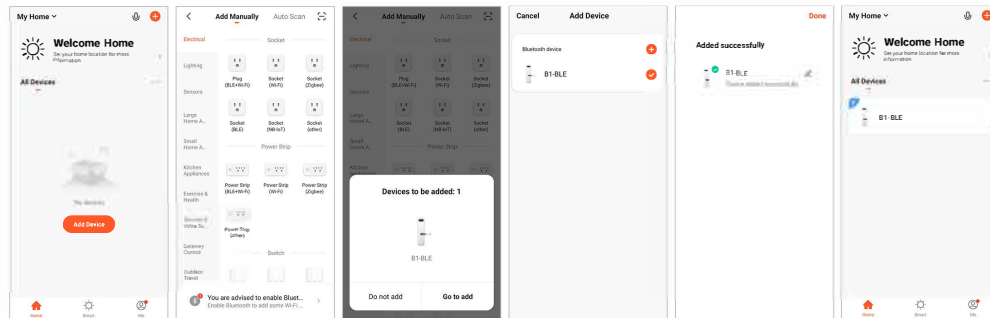
Unlock Records

View electronic unlocking records under different accounts. Mechanical unlocking is not recorded.



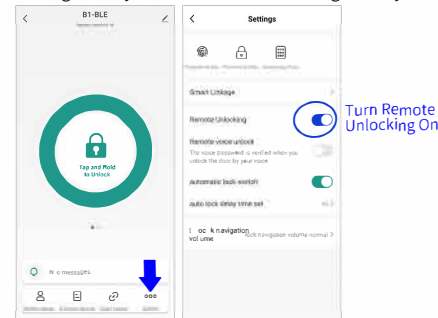
Add Device

Turn on bluetooth then add device. We recommend that you use your own account to add devices.



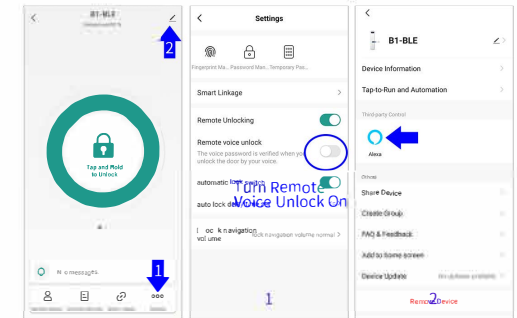
Remote Control (Need tuya bluetooth gateway)

If you do need remote control, you can get a tuya bluetooth gateway, add the device to the gateway to control it.



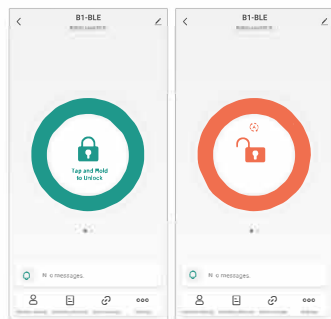
Voice Control (Need tuya bluetooth gateway)

Support Alexa, you need the amazon account and the amazon voice device for voice control.



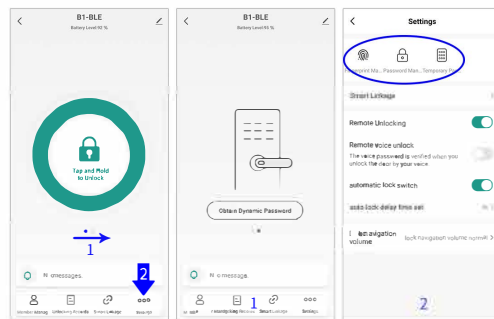
Lock & Unlock

Long press to unlock. Default: Auto lock after electronic unlock in 5 sec.



Password & Fingerprint

Slide to obtain dynamic password. In setting page, set fingerprint, password and temporary password.



Scan QR code for further information



Product Info



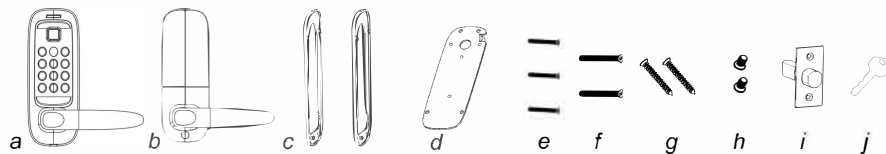
How To Use



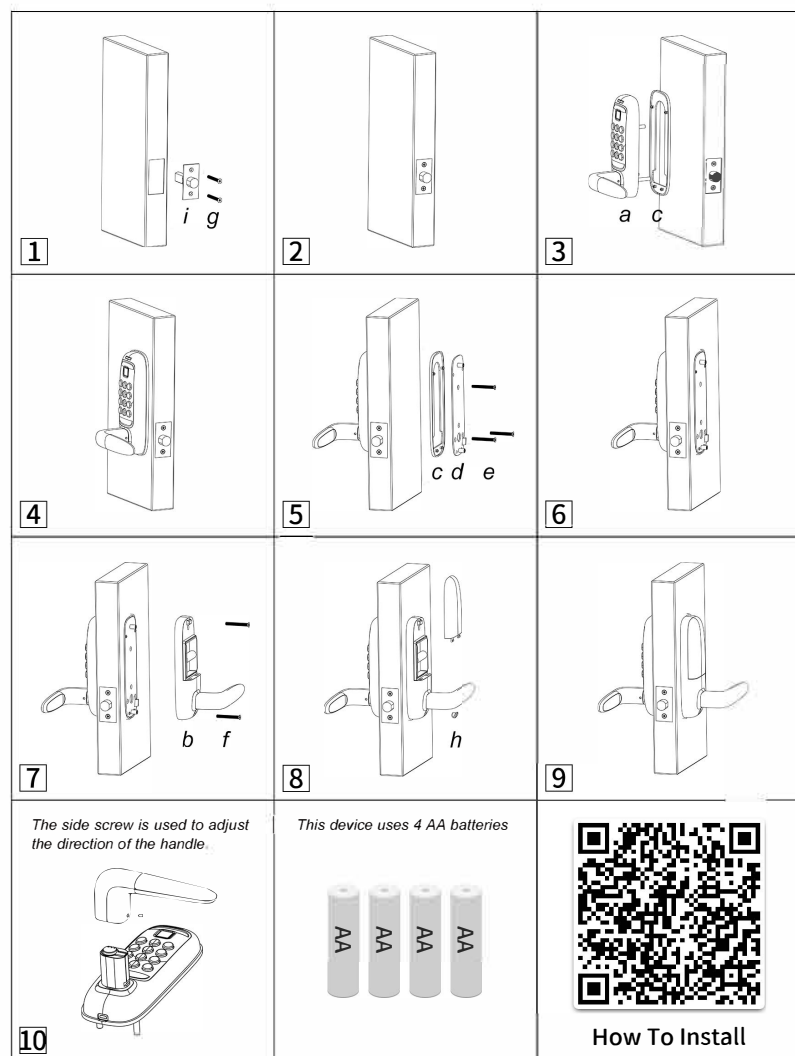
Find More

MODEL:DX001

Parts



How To Install



Usage Scenario

A. When you enter the door

1. Fingerprint unlock
2. Password unlock
3. Bluetooth App unlock
4. Remote App unlock
(need extra bluetooth gateway)

B. When you go out

1. Handle unlock

C. When someone comes

1. Handle unlock
2. Voice unlock
(need extra bluetooth gateway and amazon voice device)
3. Bluetooth App unlock
4. Remote App unlock
(need extra bluetooth gateway)

D. When someone needs a single unlock

1. Set in app, slide to obtain dynamic password
(remote set need extra bluetooth gateway)

E. You are the landlord or you want to share the permission

1. Check the member management in app and add members

F. You no longer use this lock, and others use your lock

1. No need to reset, in app main page, press and hold to remove the device

G. When need to unlock in rain or cold days

1. Use password or app bluetooth unlock.
(The fingerprint function may not work stably in this case)

FCC Caution.

This device complies with part 15 of the FCC Rules. Operation is subject to the following two conditions: (1) This device may not cause harmful interference, and (2) this device must accept any interference received, including interference that may cause undesired operation.

Any Changes or modifications not expressly approved by the party responsible for compliance could void the user's authority to operate the equipment.

Note: This equipment has been tested and found to comply with the limits for a Class B digital device, pursuant to part 15 of the FCC Rules. These limits are designed to provide reasonable protection against harmful interference in a residential installation. This equipment generates uses and can radiate radio frequency energy and, if not installed and used in accordance with the instructions, may cause harmful interference to radio communications. However, there is no guarantee that interference will not occur in a particular installation. If this equipment does cause harmful interference to radio or television reception, which can be determined by turning the equipment off and on, the user is encouraged to try to correct the interference by one or more of the following measures:
-Reorient or relocate the receiving antenna.
-Increase the separation between the equipment and receiver.
-Connect the equipment into an outlet on a circuit different from that to which the receiver is connected.
-Consult the dealer or an experienced radio/TV technician for help.

This equipment complies with FCC radiation exposure limits set forth for an uncontrolled environment. This equipment should be installed and operated with minimum distance 20cm between the radiator & your body.

When the installation is complete, turn to the back and use the app to set up the device.

