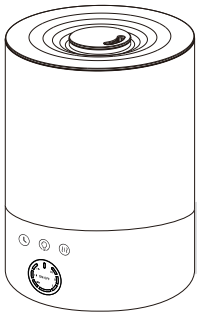
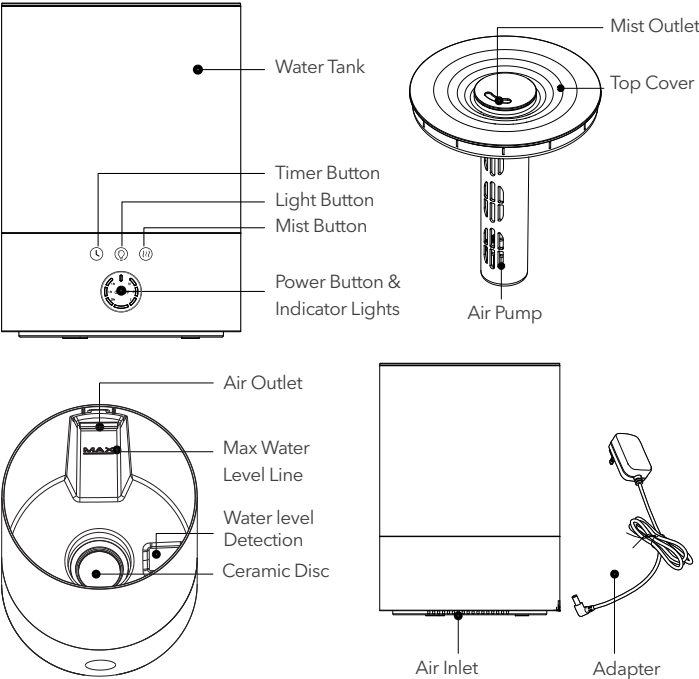


ULTRASONIC HUMIDIFIER



HU25-02H
User Manual

Product Diagram



Control Panel

Water must be added before using the humidifier.

Power Button

- 1st Press: When water is detected, enter the spray state, the default small gear is working, and the RGB night light is not turned on by default;
- 2nd Press: The machine stops working, and the cycle switches.

Note:
• Detect water shortage, red light flashes 10 times, shut down. Add water above the water level detection line, touch the power switch button to restart, and enter the normal working mode.

Mist Level Adjustment / Sleep Mode

- 1st Press: The fog volume is switched to mid-range work, and the mid-range fog indicator light and switch indicator light are on;
- 2nd Press: The fog volume is switched to the large gear, and the large gear fog indicator light and switch indicator light are on;
- 3rd Press: The fog volume is switched to a small gear, and the small gear fog indicator light and switch indicator light are on;
- Cycle control;
- In any mode (except sleep mode), long press the mist button to enter sleep mode. In sleep mode, the default is small gear operation, and night light is off. Short press the mist button again to exit sleep mode and the machine re-enters the small working mode.

ON/OFF



Night Light

- In the startup state, 1st Press: Start the atmosphere light, the default RGB gradient mode, the color order is: white → peach red → orange → yellow → green → cyan → blue → purple;
- 10th Press: Turn off the light;
- 11th Press: Enter RGB gradient mode, cycle control;
- In any mode (except sleep mode), long press the mist button to enter sleep mode. In sleep mode, the default is small gear operation, and night light is off. Short press the mist button again to exit sleep mode and the machine re-enters the small working mode.

Note:
• The RGB light can only be operated when the machine is turned on;
• In the light on state, long press the light button for 2s to quickly turn off the light, and short press the light button to turn on the light. (At this point, the light is the light mode before the light is quickly turned off.)

Timer Setting

- In the startup state, 1st Press: Timing 2 hours, shut down after 2 hours;
- 2nd Press: Timing 4 hours, shut down after 4 hours;
- 3rd Press: Timing 8 hours, shut down after 8 hours;
- 4th Press: Exit the timer mode, and the switch indicator light and fog gear indicator light will light up;
- Cycle control;
- In the standby state, long press the timer button for 2s to enter the WIFI connection mode.

APP Connection Network Guide (in standby state)

1. Download Enviro Smart APP.
 2. Bluetooth and WIFI need to be enabled.
 3. When there is no connection network during the first power on, the connection network mode will be turned on by default, and the connection network atmosphere light will not light up.
- Long press the timer button for 2s until the atmosphere light flashes white to enter the connection network mode;
 - Register and log in to the APP account, click "+" in the upper right corner of the home page to add devices, and the APP will automatically discover the devices to be added;
 - Click to add, fill in the valid WIFI network (2.4Ghz) in the space where the humidifier is located, enter the WIFI account and password to connect to the humidifier;
 - After the device is successfully added, change the humidifier name to a recognizable name, and select the place where the humidifier is located;
 - Enter the APP operation interface and perform normal operations.

Note:
• When the machine is powered on in the connection network mode, the machine enters the startup state and the atmosphere light stops blinking;
• The machine is connected to the network. If you long press the timer button during the standby state, the machine enters the connection network mode again.

APP Interface Operation

1. Main Switch: On/Off

2. Sleep Mode

- On: Enter the sleep mode, the fog volume defaults to small gear working, the light is off;
- Off: Exit sleep mode, fog volume to work in small gear.

3. Mist Level Gear Setting

- When set to 1 gear, the fog volume switches to small gear work. The small gear fog indicator light and switch indicator light are on;
- When set to 2 gear, the fog volume switches to medium gear work. Medium gear fog indicator light and switch indicator light are on;
- When set to 3 gear, the fog volume switches to high gear work. High gear fog indicator light and switch indicator light are on.

4. Light Setting

- Colorful light: RBG gradient mode;
- Monochrome light: You can choose white/peach red/orange/yellow/green/cyan/blue/purple 8 kinds of monochrome light.

5. Timer Setting

- When the preset time of APP is 0.5 ~ 2H, the 2H timer indicator light will be on. At this time, touch the timer button on the machine and the timing will be set to 4H, and the 4H timer indicator light will be on;
- When the preset time of APP is 2.5 ~ 4H, the 4H timer indicator light will be on. At this time, touch the timer button on the machine and the timing will be set to 8H, and the 8H timer indicator light will be on;
- When the preset time of APP is 4.5 ~ 8H, the 8H timer indicator light will be on. At this time, touch the timer button on the machine to exit the timer mode and the timer indicator light will turn off.

6. Make An Appointment

- Click on the "+" in the upper right corner to make an appointment;
- Appointment name: Enter a name;
- Set the time period for equipment operation: Start time to end time;
- Select repetition time: You can set the time from Monday to Sunday;
- Selection function: Mist level gear setting, light switch and light setting, (In the shutdown state, only booking light setting, the fog gear defaults to working in small gear.) sleep mode.



Clean the water tank every three days.

INTENDED USE

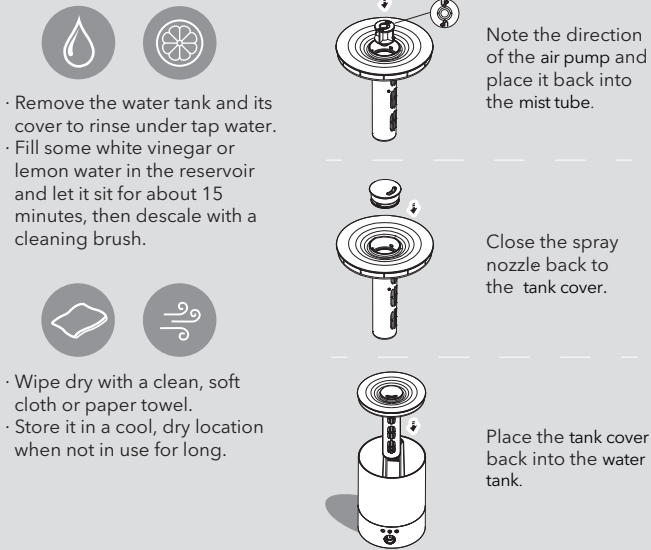
- This appliance is not intended for use by people who have reduced physical, sensory or mental capabilities or lack knowledge to use this appliance unless they are given supervision or instruction by a responsible person.
- Use this appliance only for intended household purposes as described in this User Manual.

ELECTRICITY SAFETY

- To avoid fire hazard, NEVER put the cord under rugs, near heat registers, radiator, stoves or heaters.
- DO NOT use this appliance if the cord has been damaged to avoid fire or electric hazard.
- Keep the cord out of heavy traffic areas and where it will not be tripped over.
- Unplug the appliance during filling and cleaning.

CLEANING AND MAINTENANCE

- Before cleaning, turn this humidifier off and unplug it.
- Do not let water splash into the air outlet.



SPECIFICATIONS

Model	HU25-02H
Input Voltage	DC24V 1A
Rated Power	24W
Mist Output	200±50ml/h
Working Time on a Full Tank	≥8h
Noise	28dB
Product Size	180×180×252mm

TROUBLE-SHOOTING

The humidifier does not work.

- This appliance will auto shut down if water is insufficient.

There is no air humidification.

- Air inlet/outlet is blocked.
- Your room might have too much ventilation. Close doors and windows.

There are some white deposits in the water tank.

- They are scale. You need to descale this appliance regularly. Using purified or distilled water can help prevent the formation of scale.

The mist produces an unpleasant smell.

- Change water regularly to avoid hard water deposits.
- Clean this appliance, and leave it at a shady and cool place for 12 hours with the cover detached.

Follow Us

Website: yoginair.com

Mailbox: service@yoginair.com

FCC Compliance

Warning: Changes or modifications to this unit not expressly approved by the party responsible for compliance could void the user's authority to operate the equipment.

This device complies with Part 15 of the FCC Rules. Operation is subject to the following two conditions: (1) this device may not cause harmful interference, and (2) this device must accept any interference received, including interference that may cause undesired operation.

Note: This equipment has been tested and found to comply with the limits for a Class B digital device, pursuant to part 15 of the FCC Rules. These limits are designed to provide reasonable protection against harmful interference in a residential installation. This equipment generates, uses and can radiate radio frequency energy and, if not installed and used in accordance with the instructions, may cause harmful interference to radio communications. However, there is no guarantee that interference will not occur in a particular installation. If this equipment does cause harmful interference to radio or television reception, which can be determined by turning the equipment off and on, the user is encouraged to try to correct the interference by one or more of the following measures:
-- Reorient or relocate the receiving antenna.
-- Increase the separation between the equipment and receiver.
-- Connect the equipment into an outlet on a circuit different from that to which the receiver is connected.
-- Consult the dealer or an experienced radio/TV technician for help.

To maintain compliance with FCC's RF exposure guidelines, the distance must be at least 20cm between the radiator and your body, and fully supported by the operating and installation configurations of the transmitter and its antenna(s).