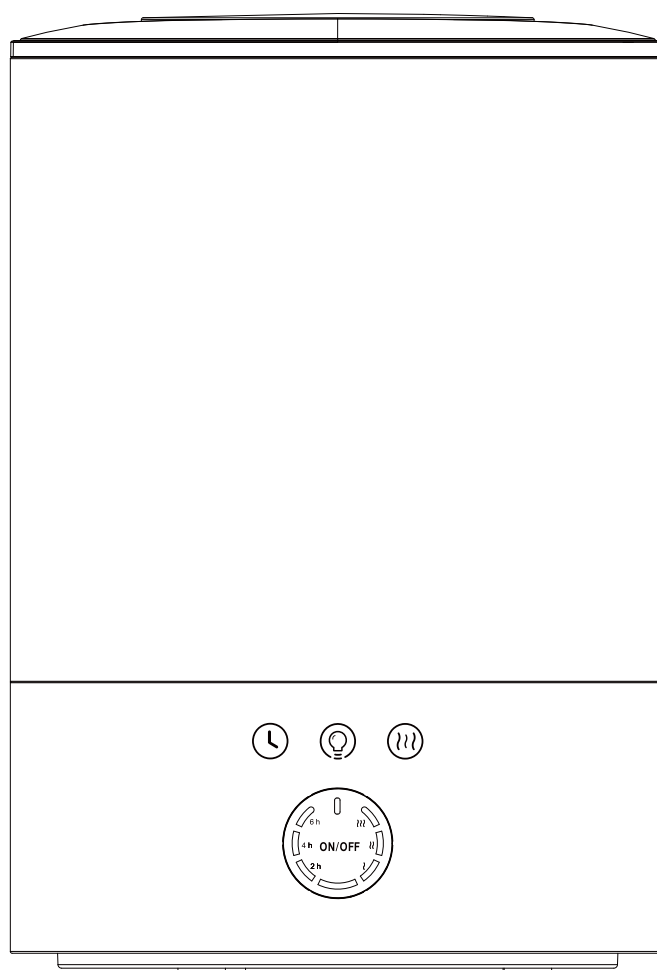


INSTRUCTION MANUAL



Model: HU25-02E

Ultrasonic Humidifier

READ AND SAVE THESE INSTRUCTIONS

PAIRING YOUR DEVICE WITH THE SMART APP

What you need:

A Wi-Fi router supporting the 2.4GHz and 802.11 b/g/n bands. 5GHz is not supported.

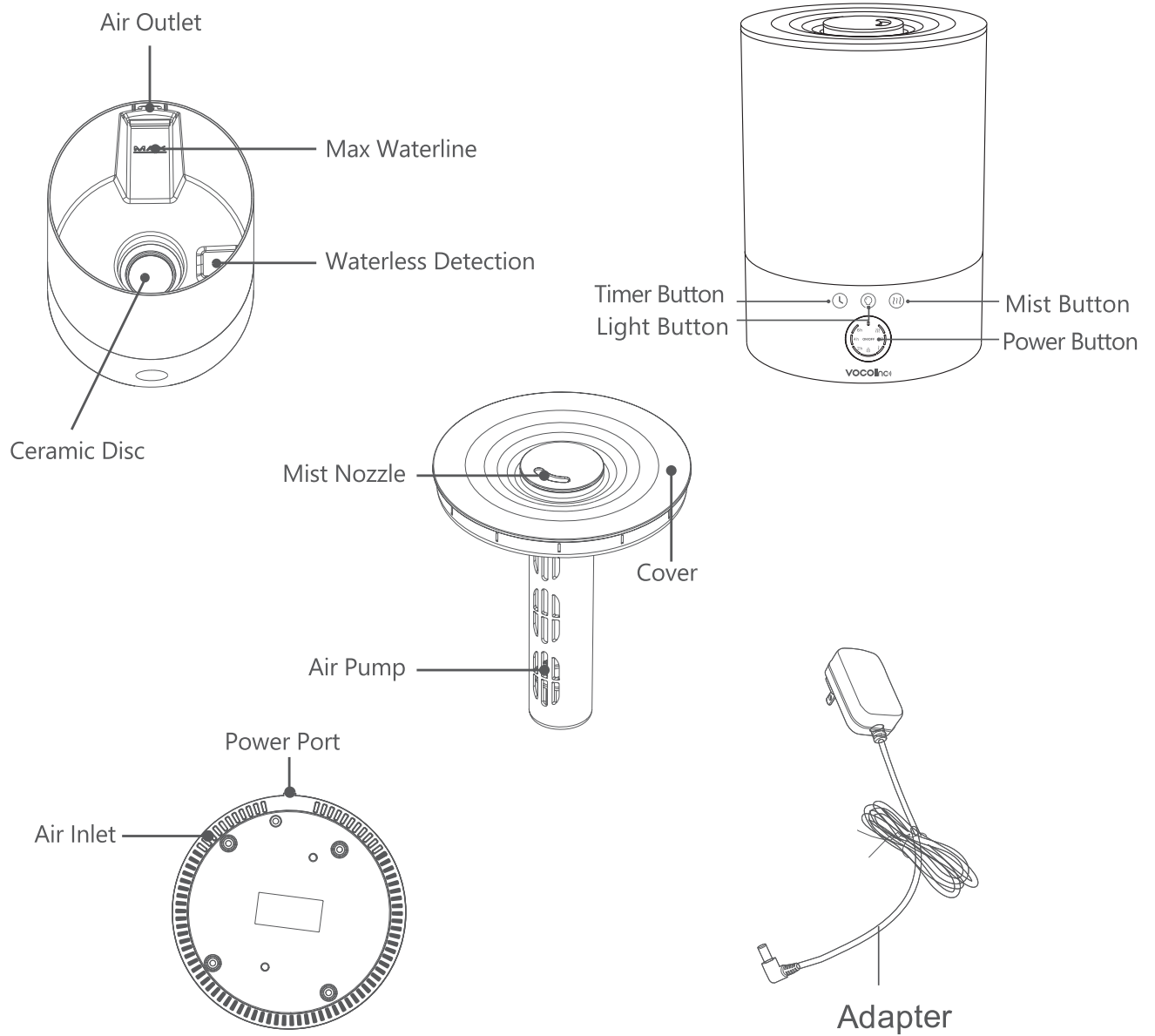
- ① Download the Smart app from the App Store (iOS devices) or Google Play (Android devices).
- ② Enter the register, then turn on mobile wifi and Bluetooth;
- ③ Press the timing/network distribution button for 5 seconds until the atmosphere light is on, and then release it. After the light is on for 10 seconds, it enters flash mode. (Press the timing/network mode button to exit the network mode)
- ④ Log into the Smart account, Choose "add devices", enter the "Small Home Appliances" category, and select "2.5L humidifiers (Wi-Fi)";
- ⑤ Enter a valid Wifi network in the space where the humidifier is located and enter your Wifi account and password to connect to the humidifier.
- ⑥ After a humidifier is added, change the name of the humidifier to an easily recognizable name.
- ⑦ Enter the APP operation interface for normal operation;



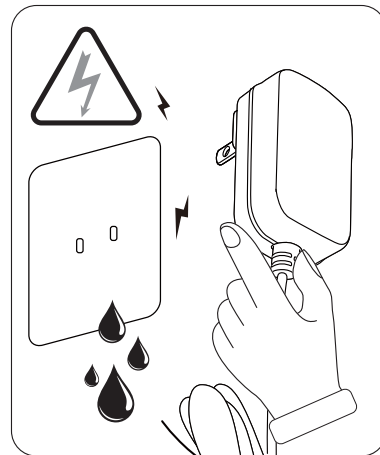
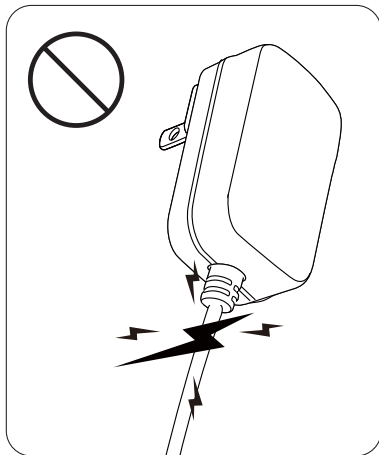
DOWNLOAD THE SMART APP



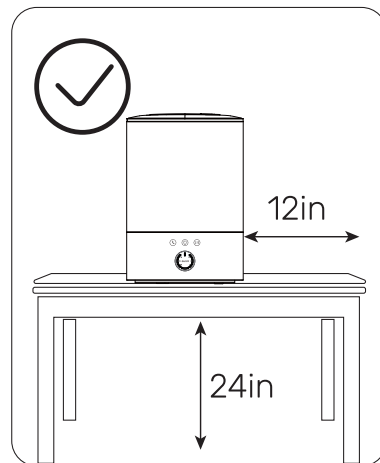
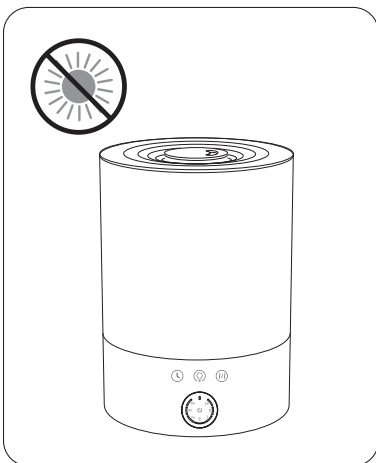
NAMES OF PARTS



BEFORE USING THE HUMIDIFIER

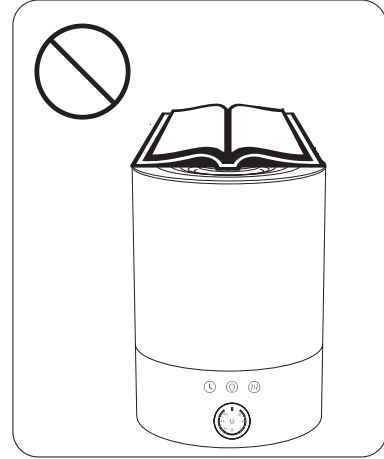
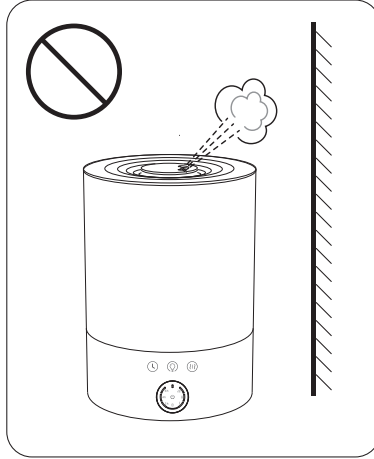
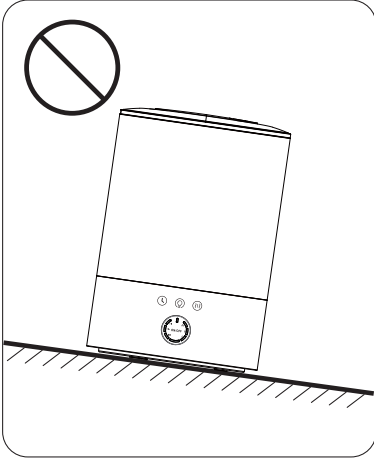


1. DO NOT use the humidifier if the cord has been damaged. Please check the cord for any signs of damage.
2. DO NOT place this humidifier in wet environments.
3. DO NOT plug the cord with wet hands.

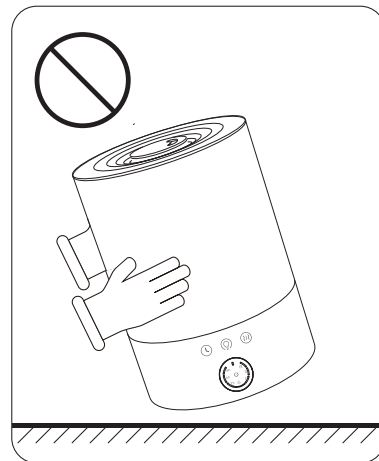


4. Please always keep the humidifier out of reach of patients children & pet.
5. Please always place the unit on a smooth, flat, lint-free, non-metallic, waterproof and level surface and keep it away from direct sunligh.
6. Always place the unit 24 inches(60 cm) above the floor, 12 inches(30 cm) away from the wall, other appliances or wooden furniture.

WHEN USING THE HUMIDIFIER



1. DO NOT place the humidifier on an inclined surface.
2. DO NOT direct the mist nozzle towards the wall.
3. DO NOT use your hand or any other object to cover the nozzle while the unit is on to avoid damaging the product or causing injury.



4. DO NOT clean the unit while it is connected to a power source or while it is on.
5. DO NOT move the humidifier obliquely.

FUNCTION CHARACTERISTICS

Essential Oil Diffuser and Cool Mist Humidifier.

Add essential oil directly to the water and enjoy therapeutic benefits.

1. Water Capacity: 2.5 L;
2. Four buttons: power button, light button, mist button and timer button;
3. Continuous run time
 - *High Mist Intensity: Up to 6 hours;
 - *Low Mist Intensity: Up to 24 hours ;
 - * Run time will vary depending on humidity levels and other external factors;
4. Mist shut-off timer: 2, 4 and 6 hours;
5. Light mode: RGB light, specific lights or off.
6. Automatic safety shut-off when water at low level;

When plugging adapter into an electrical wall outlet, all indicator lights keep on for 1 second, and then off; the unit enters into standby state.

Power Button:

1st Touch: turn on humidifier in low mist, “f” and power indicator lights keep on;

2nd Touch: turn off humidifier;

Note: If water at very low level, the unit will not work, and power indicator light keeps blinking for 10 seconds.

Mist Button:

1st Touch: continuous diffusion on medium mist intensity with “ff” Indicator light .

2nd Touch: continuous diffusion on high mist intensity with “fff”Indicator light.

3rd Touch: continuous diffusion on low mist intensity with “f” Indicator light .

Cyclic control.

Note: Long touch Mist Button to enter into sleep mode with all lights turn off except the power indicator light. Short touch again to exit sleep mode, the unit will start diffusion in low mist intensity.

Light button :

1st Press: turn on the colorful lights (cycle through all the colors automatically)

2nd Press: choose the favourite single colors (Switch to the next color with a single click)

Press the light button for 1 seconds to turn off colorful lights.

Note:

a.Light Button only works when the humidifier powers on;

b.Long touch Light Button to turn off the light, short touch again to turn it on;

Timer Button:

1st Touch: continuous diffusion for 2 hours with 2H indicator light on, then Off.

2nd Touch: continuous diffusion for 4 hours with 4H indicator light on, then Off.

3rd Touch: continuous diffusion for 6 hours with 6 H indicator light on, then Off.

4th Touch: continuous diffusion without timer. Cyclic control.

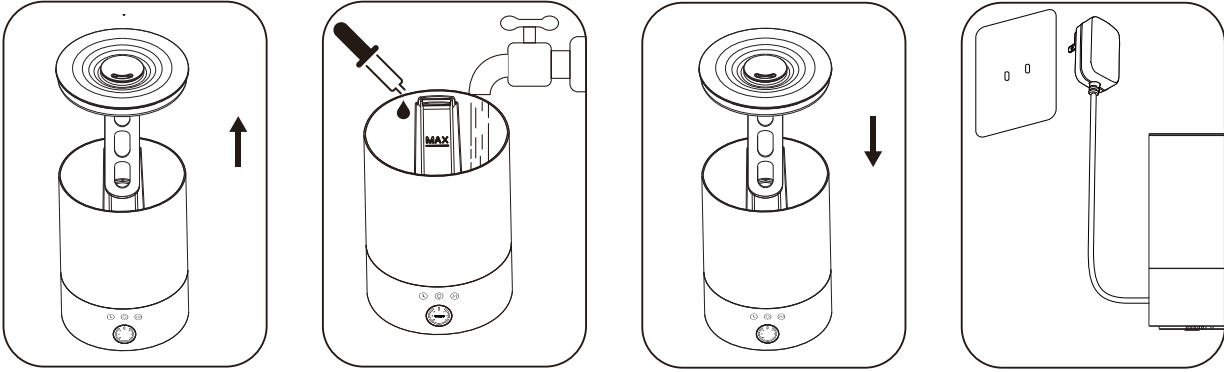
CLEAN THE WATER TANK EVERY 3 DAYS



- Be aware that high humidity levels may encourage the growth of biological organisms in the environment.

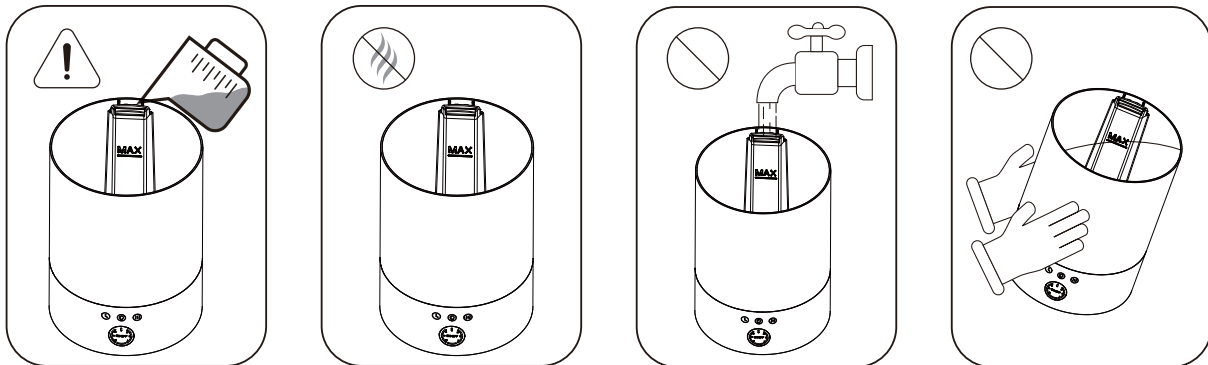
- Do not permit the area around the humidifier to become damp or wet. If dampness occurs, turn the output of the humidifier down. If the humidifier output volume can not be turned down, use the humidifier intermittently. Do not allow absorbent materials, such as carpeting, curtains, drapes, or tablecloths, to become damp.
- Unplug the appliance during filling and cleaning.
- Never leave water in the reservoir when the appliance is not in use.
- Empty and clean the humidifier before storage.Clean the humidifier before next use.
- Warning: Micro-organisms that may be present in the water or in the environment where the appliance is used or stored, can grow in the water reservoir and be blown in the air causing very serious health risks when the water is not renewed and the tank is not cleaned properly every 3 days.

OPERATIONS GUIDE



Place unit on a flat, water-resistant surface as moisture may cause damage to carpet, finished floors, furniture, or walls.

1. Remove the Top Cover from the Water Tank.
2. Fill the Water Tank with tap water up to the Max Water Level Line. Do not overfill. Add approximately 10 drops of essential oil per 1 liter of water into the Water Tank.
3. Replace Top Cover onto the Water Tank.
4. Plug the Power Cord into an electrical wall outlet. It will take a few minutes for the essential oil to blend with the water before fragrance begins diffusing.



1. If tap water is too hard, it is recommended to use filtered or distilled water to avoid white dust.
2. DO NOT add water with temperature exceeds 50 degree Celsius.
3. DO NOT add water into the air outlet or empty water from the air outlet.
4. DO NOT tilt the humidifier while the water tank is filled with water to avoid leakage and water into the air outlet.

CARE & MAINTENANCE

Only use the adapter supplied with the unit.

Always unplug the adapter from the electrical outlet before filling it.

The essential oil should not come in contact with the exterior surface of the unit.

Do not submerge the unit into the water to avoid the risk of electric shock.

Do not put fingers, hands, or any object into the unit while operating.

Do not attempt to adjust or repair the unit.

Do not touch the water while the unit is operating.

Do not fill water through the Mist Outlet or the Air Outlet.

Do not place the unit near heat sources or direct sunlight.

Use two hands when moving your humidifier.

Use this unit only as intended as described in this manual.

TO CLEAN:

Empty the water in the tank needs to stay away from the air outlet

The Ceramic Disc should not come in contact with any hard or sharp objects.

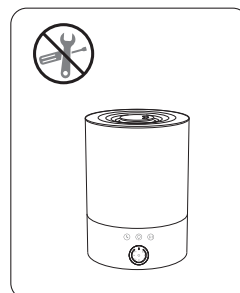
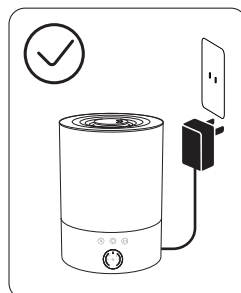
To remove possible buildup, rinse with a white vinegar and water solution.

Dry thoroughly with a soft cloth. Do not use strong cleaning agents.

AFTER USING THE HUMIDIFIER

1. Always disconnect from a power source by pulling out the plug when not in use.

2. DO NOT attempt to repair or adjust any electrical or mechanical functions on this humidifier.



PRODUCT SPECIFICATIONS AND PARTS

SPECIFICATION

Model No	HU25-02E
Operating Voltage	DC24V
Rated Power	24W
Water Tank Capacity	2.5L
Working Time	≥8h
Mist Output	200±50ml/h
Mist Modes	High/Medium/Low
Timer Setting	2h/4h/6h

FCC

Warning: Changes or modifications to this unit not expressly approved by the party responsible for compliance could void the user's authority to operate the equipment.

This device complies with Part 15 of the FCC Rules. Operation is subject to the following two conditions:

(1) this device may not cause harmful interference, and (2) this device must accept any interference received, including interference that may cause undesired operation.

Note: This equipment has been tested and found to comply with the limits for a Class B digital device, pursuant to part 15 of the FCC Rules. These limits are designed to provide reasonable protection against harmful interference in a residential installation. This equipment generates, uses and can radiate radio frequency energy and, if not installed and used in accordance with the instructions, may cause harmful interference to radio communications. However, there is no guarantee that interference will not occur in a particular installation. If this equipment does cause harmful interference to radio or television reception, which can be determined by turning the equipment off and on, the user is encouraged to try to correct the interference by one or more of the following measures:

- Reorient or relocate the receiving antenna.
- Increase the separation between the equipment and receiver.
- Connect the equipment into an outlet on a circuit different from that to which the receiver is connected.
- Consult the dealer or an experienced radio/TV technician for help.

To maintain compliance with FCC's RF exposure guidelines, the distance must be at least 20cm between the radiator and your body, and fully supported by the operating and installation configurations of the transmitter and its antenna(s).

IC

This device contains license-exempt transmitter(s)/receiver(s) that comply with Innovation, Science and Economic Development Canada's license-exempt RSS(s). Operation is subject to the following two conditions:

1. This device may not cause interference.
2. This device must accept any interference, including interference that may cause undesired operation of the device.

Cet appareil contient un ou des émetteurs/récepteurs exempts de licence qui sont conformes au(x) RSS exempts de licence d'Innovation, Science et Développement économique Canada. Le fonctionnement est soumis aux deux conditions suivantes :

1. Cet appareil ne doit pas causer d'interférences.
2. Cet appareil doit accepter toute interférence, y compris les interférences qui peuvent causer un fonctionnement non désiré de l'appareil.

The device has been evaluated to meet general RF exposure requirement. To maintain compliance with RSS-102 - Radio Frequency (RF) Exposure guidelines, this equipment should be installed and operated with a minimum distance of 20cm between the radiator and your body.

Le dispositif a été évalué à répondre général rf exposition exigence. Pour maintenir la conformité avec les directives d'exposition du RSS-102-Radio Fréquence (RF), ce matériel doit être installé et exploité à une distance minimale de 20 cm entre le radiateur et votre corps.