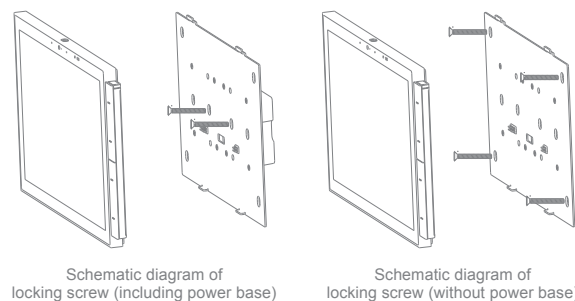
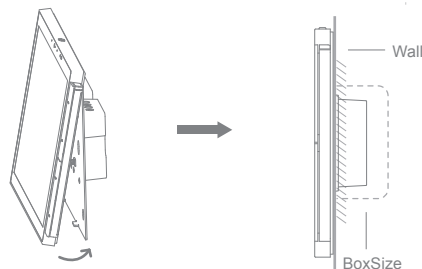


③ Ensure that the base bracket is complete, fix the bracket and the base as a whole on the wall with screws, and check that the wall of the bracket part is firm and flat.



④ Embed the upper part of the central control host directly, and then magnetically attract the lower part directly to the bracket to complete the installation and check whether the buckle is in good condition.



• Pay Attention

- Do not use force when installing the screws, so as not to cause deformation of the bracket.
- The stripping length is about 10mm when wiring. Adjust the stripping length according to the actual situation to ensure good release and avoid exposed wires.

Please read the manual carefully before using the product

01 Product introduction

This product is suitable for indoor public spaces, and integrates a multi-functional control panel that integrates control, interconnection, entertainment, and security. Compatible with a variety of product forms, it is designed with standard bases for different countries, and is used with the wall bracket to fix the control panel and hang it on the wall. It mainly provides gateway function, scene panel, device video interconnection, and other functions. Users can control and manage different types of smart devices under the account through physical buttons, screen, voice and other interactive methods.

02 Quick Setup

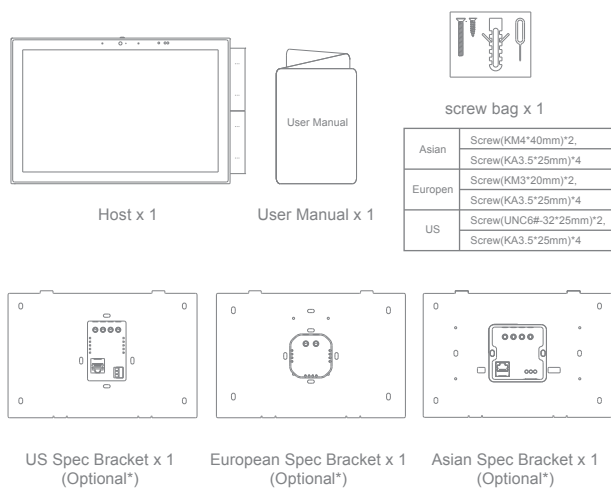
1. Check and confirm the product itself and accompanying accessories according to the purchased version.
2. Follow the instructions in the manual to complete the required interfaces for product installation and connection and confirm, and it will automatically start when powered on.
3. Search for APP in the app store or scan the QR code on the outer package/instruction to download and install the APP and complete the account login.
4. Complete the initialization process operation of the Control Panel MAX according to the prompts of the central control.
5. Follow the prompts to complete the basic network activation, complete the basic configuration, and enter to start using the Control Panel MAX device.



Scan the QR code to download "Smart Life" App
*App is subject to the actual released version

03 Packing list

1. Product parts and accessories list



US Spec Bracket x 1
(Optional*)

European Spec Bracket x 1
(Optional*)

Asian Spec Bracket x 1
(Optional*)

*Optional accessories: support multiple forms of standard bases for different countries, and select suitable bases according to requirements.

2. Introduction of optional accessories

This product supports multiple forms, and has multiple functions; according to the actual wiring and installation reservations on site, a suitable base cassette can be selected.

06 Basic Specifications

Product Name	Control Panel MAX	
Screen	10.1-inch multi-touch screen / resolution 1920*1200	
Storage	2GB RAM/8GB ROM	
Camera	IPS 5 million pixels / privacy protection paddle	
Audio	Speaker * 2/microphone * 2	
Wireless Protocol	Wi-Fi/Zigbee3.0/ Bluetooth 5.0 BLE/BLE mesh	
Sensor	TOF Proximity Sensor/Ambient Light Sensor/ Temperature and Humidity Sensor	
Operation mode	Touch screen/Physical buttons/Voice/APP	
Interface	USB type-C (Debug only, Input: DC12V,1.0A Max)	
Work Temperature	0~40℃	
Work Humidity	5%~90%RH non-condensing state	
Input	100-240V~, 50/60Hz	

Wireless For EU Type	Frequency	Max. Power
Wi-Fi	2400-2483.5MHz	20dBm
Bluetooth	2400-2483.5MHz	10 dBm
Zigbee	2400-2483.5MHz	12 dBm

07 Notes

1. In order to ensure the correct use of this product, it must be installed, maintained and disassembled by a professional electrician.
2. Before installing and disassembling this product, the main power switch must be cut off to prevent electric shock.
3. This product should be kept away from fire and water sources during installation and use, and should not be used in humid environments (such as bathrooms).
4. Confirm that the voltage is in line with the working voltage of this product before use, and do not insert the PoE network cable into the network port.
5. Do not repair the product by yourself. Any modification or flashing of the product without authorization will void the warranty.
6. The product needs to be installed by technicians. The installation environment is concrete wall.
7. The distribution box must be plastic and non-hygroscopic material, with a minimum fire-resistance rating of 5V.
8. There should be no other metal conductive objects in the distribution box.
9. The distance between the opening of the product body and the opening of the junction box should be at least 1 cm.

Class II equipment.Equipment in which protection against electric shock does not rely on basic insulation only, but in which a supplementary safeguard is provided, there being no provision for protective earthing or reliance upon installation conditions.

~ a.c. Nature of the supply voltage.

Declaration of Conformity European notice

Hereby, We declares that this product is in compliance with essential requirements and other relevant provisions of Directive 2014/53/EU,2011/65/EU.



This product must not be disposed of as normal household waste. In accordance with EU directive for waste electrical and electronic equipment (WEEE- 2012/19/EU). Instead, it should be disposed of by returning it to the point of sale, or to a municipal recycling collection point.
The device could be used with a separation distance of 20cm to the human body.

08 Warranty Policy

The after-sales service of Smart Control Panel S is strictly in accordance with the "Consumer Rights Protection Law of the People's Republic of China" and "Product Quality Law of the People's Republic of China", and implements after-sales warranty services of repair, replacement and refund. The service content is as follows:
1. Within 7 days from the date of your receipt, if this product has a product performance failure, you can enjoy the return or exchange services for free.
2. Within 8-15 days from the date of your receipt, if this product has a product performance failure, you can enjoy free replacement or repair services.
3. Within 12 months from the date of your receipt, if the product has a product performance failure, you can enjoy free maintenance services.

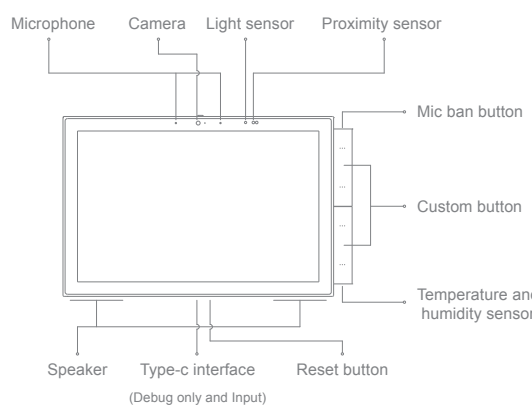
09 Non-warranty regulations

1. Unauthorized maintenance, misuse, collision, negligence, abuse, liquid ingress, accident, alteration, incorrect use of non-original accessories, or tearing off/altering of labels or anti-counterfeiting marks.
2. Expiration of validity period of the warranty services of repair, replacement and refund.
3. Damage caused by force majeure.
4. Other damages or malfunctions that are not caused by the product's own design, technology, manufacturing, quality and other issues.

Control Panel MAX

Product Manual

04 Function Diagram



05 Product Installation

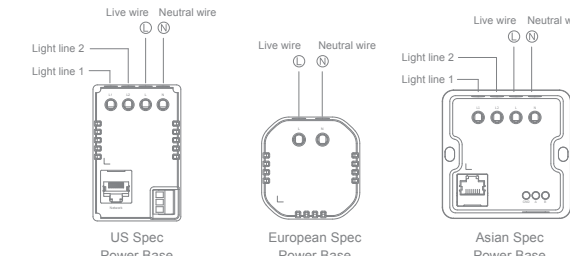
1.Installation preparation

- ① This product is powered by the neutral wire, please arrange the neutral wire in advance.
- ② This product is connected to the network through Wi-Fi or Ethernet, please arrange the Wi-Fi network or Ethernet cable in advance.
- ③ If you need to use the relay, RS485, security network port of this product, please preset the relevant cables in advance.
- ④ In order to ensure electricity safety and wireless performance, please use the standard plastic box for installation and use.
- ⑤ Please bring your own screwdriver, test pen, electrical tape and other tools, please do not operate with electricity.

RISK OF FIRE: Install only in concrete or other non-combustible wall

2. Installation Instructions

- ① Turn off the main power switch, and use a test pen to confirm that the live wire of the cassette is not charged.
- ② Connect the base correctly, make sure that the copper wire and the terminal are well released, and there is no exposed wire.



- Please connect according to the actual marking on the product
- L: Live wire input
- N: Neutral wire input
- Stripping length 10mm

Federal Communication Commission Interference Statement

This device complies with Part 15 of the FCC Rules. Operation is subject to the following two conditions: (1) this device may not cause harmful interference, and (2) this device must accept any interference received, including interference that may cause undesired operation.

This equipment has been tested and found to comply with the limits for a Class B digital device, pursuant to part 15 of the FCC Rules. These limits are designed to provide reasonable protection against harmful interference in a residential installation. This equipment generates uses and can radiate radio frequency energy and, if not installed and used in accordance with the instructions, may cause harmful interference to radio communications. However, there is no guarantee that interference will not occur in a particular installation. If this equipment does cause harmful interference to radio or television reception, which can be determined by turning the equipment off and on, the user is encouraged to try to correct the interference by one or more of the following measures:
—Reorient or relocate the receiving antenna.
—Increase the separation between the equipment and receiver.
—Connect the equipment into an outlet on a circuit different from that to which the receiver is connected.
—Consult the dealer or an experienced radio/TV technician for help.

Caution: The user is cautioned that changes or modifications not expressly approved by the party responsible for compliance could void the user's authority to operate the equipment.

FCC Radiation Exposure Statement:

This equipment complies with FCC radiation exposure limits set forth for an uncontrolled environment. This equipment should be installed and operated with minimum distance 20cm between the radiator & your body.
RF Exposure: A distance of 20cm shall be maintained between the antenna and users, and the transmitter module may not be co-located with any other transmitter or antenna.