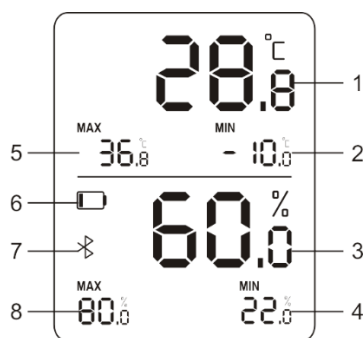


BlueTag TH20 Bluetooth Temperature and Humidity Data Logger

1. Overview

BlueTag TH20 is an intelligent Bluetooth temperature and humidity data logger based on Bluetooth communication technology. With our Bluetooth App software, you can preset parameters and read real-time data and download the PDF & CSV report.

2. LCD Screen



1	Current Temperature
2	Min. Temperature Value
3	Current Humidity
4	Min. Humidity Value
5	Max. Temperature Value
6	Low Battery Alarm
7	Bluetooth
8	Max. Humidity Value

3. Specifications

Model	BlueTag TH20	Memory Capacity	Max. 65000 readings
Shelf Life	1 year	Start Delay	0 Minute ~ 72 Hours
Run Days	Max. 200 days	Logging Interval	1 Minute ~ 99 Minutes
Wireless Connection	Bluetooth 5.2	Battery	3.0V CR2032 Lithium Battery
APP Language	English, Chinese	APP OS	Android
Temperature Unit	°C, °F	Report Format	PDF, CSV
Temperature Range	-30°C ~ +70°C	Temperature Accuracy	±0.3℃
Humidity Range	0~99%RH	Humidity Accuracy	±3%RH(25°C, 20%~90%RH), ±5%RH(other)
Weight	36.5g	Dimensions	62mm*47mm*13mm
Installation	3M Adhesive tape, Magnetic	Certifications	CE, CE-RED, EN12830

4. Operation

4.1 Download and Install the APP

Please search T-keeper from Google Play or scan this QR code (Fig.1) to download the APP (Android version only).





Fig.1

4.2 Add Device

4.2.1 Open the App, and tap “Join in” to register. After successful registration, login your account.

4.2.2 Pull out the battery insulation sheet to start the logger.

4.2.3 Tap  on the home page to enter the add devices page.

4.2.4 Tap  to scan the product QR code on the device or manually enter the product serial number below the QR code to add devices.

4.3 Configuration

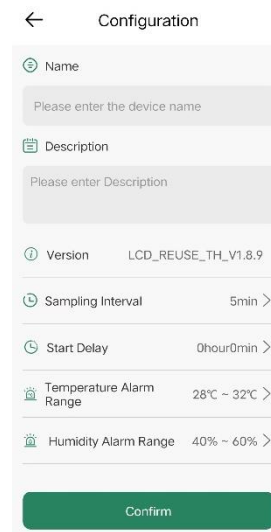
4.3.1 After the device is added, it will enter the configuration page (Fig. 2).

4.3.2 Then please configure parameters according to your needs.

4.3.3 After configuration, tap Confirm. It will enter the home page automatically.

Note: The longer sampling interval, the more power saving.

After configuration, the parameters cannot be modified except Name.



The configuration page shows fields for Name, Description, Version (LCD_REUSE_TH_V1.8.9), Sampling Interval (5min), Start Delay (0hour0min), Temperature Alarm Range (28°C ~ 32°C), and Humidity Alarm Range (40% ~ 60%). A green Confirm button is at the bottom.

Fig. 2



4.4 View Data

4.4.1 Check Real-time Data

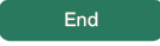
Place the device next to the mobile phone, the real-time data can be viewed on the home page. If the real-time data is displayed as "--", it means that the device has not been searched. Please wait for a few seconds. If the temperature is out of the alarm range, the temperature will be displayed in red. So is the humidity.


4.4.2 Read Historical Data

On the home page, tap  or , enter the detail page to view the historical data. Place the

device next to the mobile phone, tap  to get the latest data from the device. Tap , the data details list will be displayed.

4.5 Stop Device

Tap  at the bottom of the detail page to stop the device.

Note: Once finished,  will be displayed on the APP. Then the APP won't record anymore from this device and only shows real-time data.

4.6 Export Report

After the device is ended on APP, tap  to export PDF or CSV report (Fig. 3).

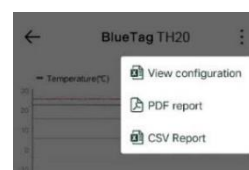


Fig. 3


4.7 Reuse

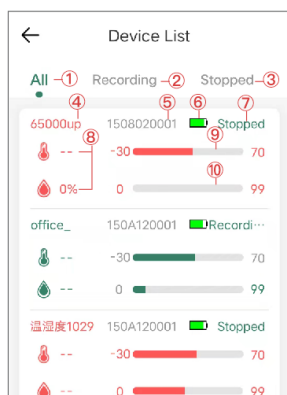
4.7.1 If power is enough, please start the device again from 4.2.3.

4.7.2 If power is not enough, please replace the battery. Then start from 4.2.3.

4.8 Device management

4.8.1 Device List

On the home page, tap  to enter the Device List page (Fig. 4).



The Device List page shows a table of devices with columns for status, name, serial number, battery level, and temperature/humidity ranges. Numbered callouts 1-10 point to specific elements.

Status	Name	Serial Number	Battery Level	Temperature Range	Humidity Range
All	65000up	1508020001	Stopped	-30 ~ 70	0 ~ 99
Recording	office_	150A120001	Recording	-30 ~ 70	0 ~ 99
Stopped	温度度1029	150A120001	Stopped	-30 ~ 70	0 ~ 99

- ① All devices
- ② Working devices
- ③ Stopped devices
- ④ Device name
- ⑤ Serial number
- ⑥ Battery level
- ⑦ Device status
- ⑧ Latest data
- ⑨ Temperature range
- ⑩ Humidity range

Fig. 4

4.8.2 Delete Device

On the home page or Device List page, long press the device to delete it (Fig. 5., Fig. 6.).

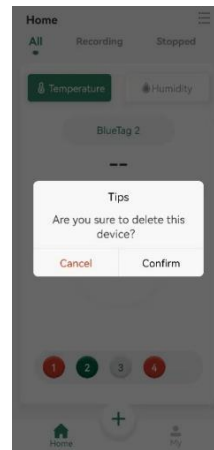


Fig. 5

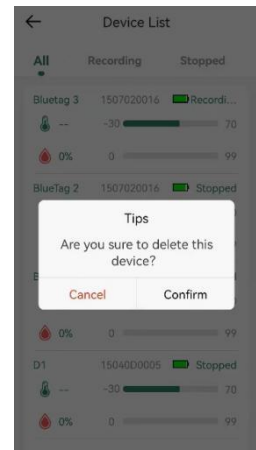


Fig. 6

4.9 APP Setting



On the home page, tap  to modify the APP language, temperature unit and login password etc. (Fig. 7).



Fig.7

5. Notice

5.1 Switch Temperature Unit: Open the back cover, and press the button shortly to switch the °C and °F.

5.2 The LCD Screen shows , which means the low battery, please change the battery in time.

5.3 The LCD Screen shows , which means the Bluetooth is connected. Power consumption will get high.

5.4 The LCD Screen shows “E0”, which means the sensor failure, please change another device and contact us.

6. FCC WARNING

This device complies with part 15 of the FCC Rules. Operation is subject to the following two conditions: (1) this device may not cause harmful interference, and (2) this device must accept any interference received, including interference that may cause undesired operation.

Any changes or modifications not expressly approved by the party responsible for compliance could void the user's authority to operate the equipment.

NOTE: This equipment has been tested and found to comply with the limits for a Class B digital device, pursuant to Part 15 of the FCC Rules. These limits are designed to provide reasonable protection against harmful interference in a residential installation. This equipment generates, uses and can radiate radio frequency energy and, if not installed and used in accordance with the instructions, may cause harmful interference to radio communications.

However, there is no guarantee that interference will not occur in a particular installation. If this equipment does cause harmful interference to radio or television reception, which can be determined by turning the equipment off and on, the user is encouraged to try to correct the interference by one or more of the following measures:

- Reorient or relocate the receiving antenna.
- Increase the separation between the equipment and receiver.

-- Connect the equipment into an outlet on a circuit different from that to which the receiver is connected.

-- Consult the dealer or an experienced radio/TV technician for help.

To maintain compliance with FCC's RF Exposure guidelines, This equipment should be installed and operated with minimum 20cm distance between the radiator and your body: Use only the supplied antenna.



T: 0086-371-89908620

E: sales@freshliance.com

www.freshliance.com

www.temlogger.com

www.facebook.com/FreshLiance.cn