

# Mini Label Printer

## User Manual

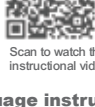
### Scan to download the app



Download on the  
**App Store**

Get it on  
**Google Play**

### Operational Video



Scan to watch the instructional video

### Scan the QR code for more language instructions.

English、Français、Deutsch、Italiano、Español、Português、日本語、한국어、Bahasa Indonesia、Bahasa Melayu、العبرية、Türkçe、Русский、Dansk、Čeština、Nederlands、Svenska、Ελληνικά、Polski、Magyar、简体中文、繁體中文、ភាសាខ្មែរ、

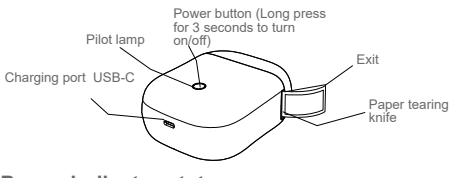
Tiếng Việt、Filipino、Български、Hrvatski、Suomi、Latviešu、Lietuvių、Română、Slovenčina、Slovenščina、Eesti、Bokmål



Product Model:	MPL11
Size:	97x77x39mm
Weight:	135g
Resolution	203dpi
Input:	5V $\equiv$ 1A
Connector:	USB-C
Battery capacity:	1200mAh(3.7V)
Consumable items:	15mm
Print:	Temperature-sensitive

EN

## Product introduction



## Power indicator status

Green light is always on: printer status is normal; power on charging, full charge; power off charging, full charge;  
Green light blinking: power on charging (charging not full state);  
Red light is always on: fault status, including but not limited to print head overheating and paper shortage;  
Flashing red light: switch off charging (not fully charged state);

**Power on status, continuously press the power button 6 times, calibrate the label paper.**

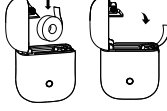
## Basic usage and settings

- Turn on the printer by pressing and holding down the power/button for 3 seconds.
- Double-click the power button, the printer will print out the QR code of the bound device; add a device through the App, scan the QR code to connect the printer(Note: Do not search for BT printer connection in the BT settings of the mobile phone.)
- Paper feeding: Press the power/settings button, and the paper will be output by double clicking.  
Label paper: A label paper can be printed from the machine, located between two label papers, and can be torn off along the gap.  
Black label paper: Tear open the label along the black mark.  
Continuous paper: Send 10mm paper.
- The printer can detect a "paper shortage" status. In this case, the printer does not respond.
- Insufficient battery power The printer has a low battery detection function, and when the printer's battery is low, the indicator light flashes red and alarms.
- BT connection: When connected via BT, the mobile app will display corresponding instructions.

## Installation of consumables

Please open the paper compartment cover and put the printing paper on top of the printer. After closing the paper compartment cover, the printing paper will expose a short section of the printer, as shown in the figure:

(Note: If the paper is laid in reverse, the printer will print a blank space.)



## Safety and precautions

- There is a built-in lithium battery, please do not use it in the environment with temperature higher than 40°C; keep away from fire and other heat sources, and do not place it in the hot sun, such as closed car;
- Children should be charged and used under the supervision of adults. After full charge, please make sure to pull out the charging cable in time to prevent overheating, short circuit or fire;
- Do not put the product in fire or water to avoid battery short circuit or

## Trouble shooting guide

- If there is no content on the paper when printing Check the paper is loaded in right direction; if it is in the right direction, print the self-test page and check; If the self-test page cannot be printed, the printer is malfunctioning; if the self-check page is correct, check the paper or App;
- Print blurry  
Check the default print density for the best print results; Check if there are horizontal lines or only part of the content can be printed; Check to see if the print head is blocked and clean it with alcohol; if the print quality is not good, please use the original paper series;
- A paper shortage error message is displayed Check whether the printer is out of paper; if not, make sure the cover is locked correctly (loose pages may cause the printout to shift or Paper test failed);
- Printing stops unexpectedly

In order to ensure the reliability of the printer, multiple protection instructions are designed; The printer will stop working due to lack of paper, data errors, excessive temperature, or low battery power; Follow the prompts on the application to analyze the problem.

⚠ Only one side of the printing paper can be printed. Please place the printing paper in the correct direction.

## FCC Statement

1. This device complies with Part 15 of the FCC Rules. Operation is subject to the following two conditions:

(1) This device may not cause harmful interference.

(2) This device must accept any interference received, including interference that may cause undesired operation

2. Changes or modifications not expressly approved by the party responsible for compliance could void the user's authority to operate the equipment. Note: This equipment has been tested and found to comply with the limits for a class B digital device, pursuant to Part 15 of the FCC Rules. These limits are designed to provide reasonable protection against harmful interference in a residential installation.

This equipment generates uses and can radiate radio frequency energy and, if not installed and used in accordance with the instructions, may cause interference to radio communications. However, there is no guarantee that interference will not occur in a particular installation if this equipment does cause harmful interference to radio or television reception, which can be determined by turning the equipment off and on, the user is encouraged to try to correct the interference by one or more of the following measures.

- Reorient or relocate the receiving antenna.
- Increase the separation between the equipment and receiver.
- Connect the equipment into an outlet on a circuit different from that to which the receiver is connected.
- Consult the dealer or an experienced radio/TV technician for help.

The device has been evaluated to meet general RF exposure requirement

The device can be used in portable exposure condition without restriction.



[www.luckjingle.com](http://www.luckjingle.com)

Made in China