

规格承认书

Specification For Approval

客户名称: Zeon Electronics (Shenzhen)
Customer

规格描述: IPEX-2.4G-Black Flat Antenna-113 Gray-L55MM

Part name

双普料号: SPTX2305050001

Part No

客户料号: _____

Customer Part No

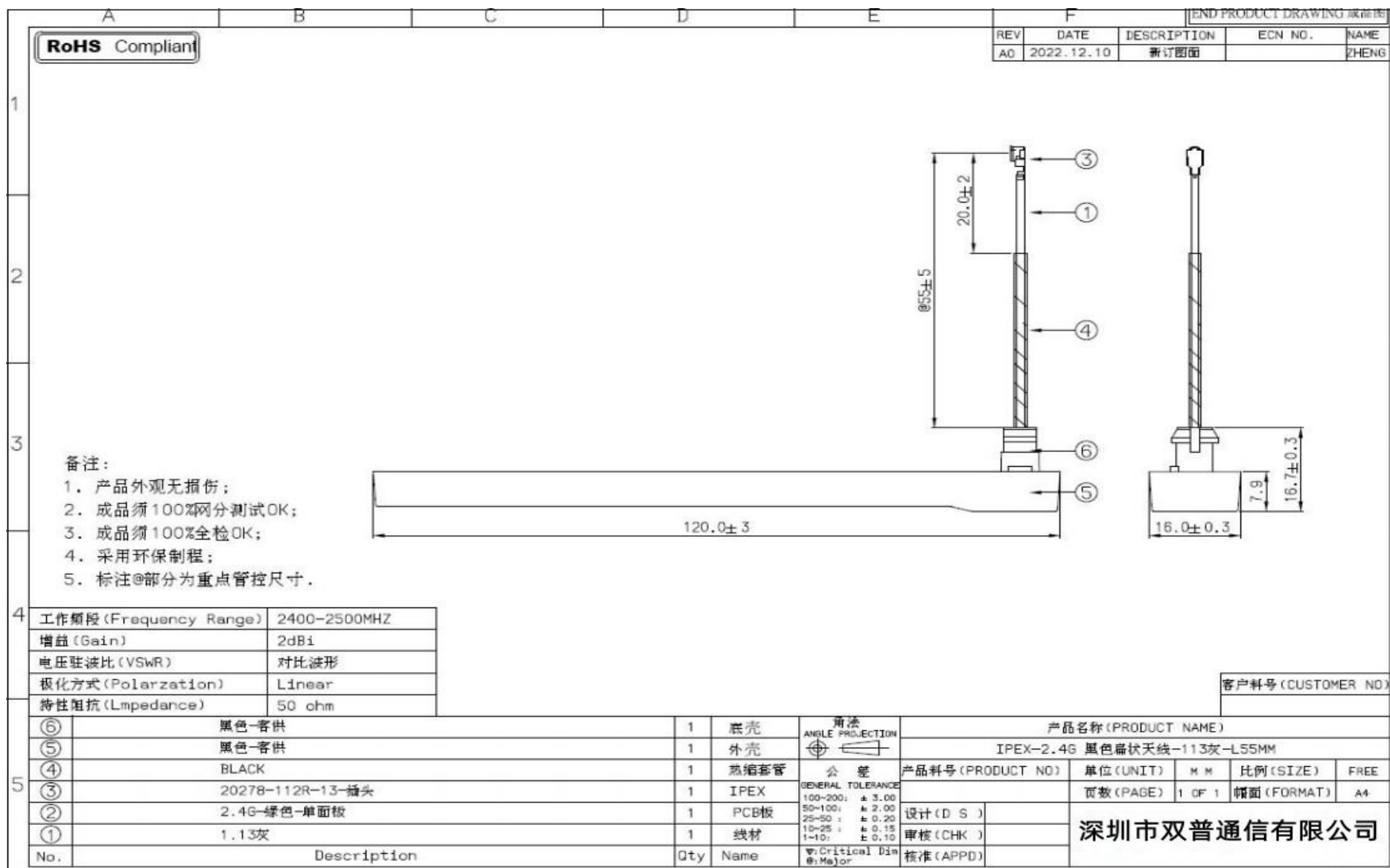
客户确认 Customer confirmation		
确认 Confirmation	核实 check	批准 Approver

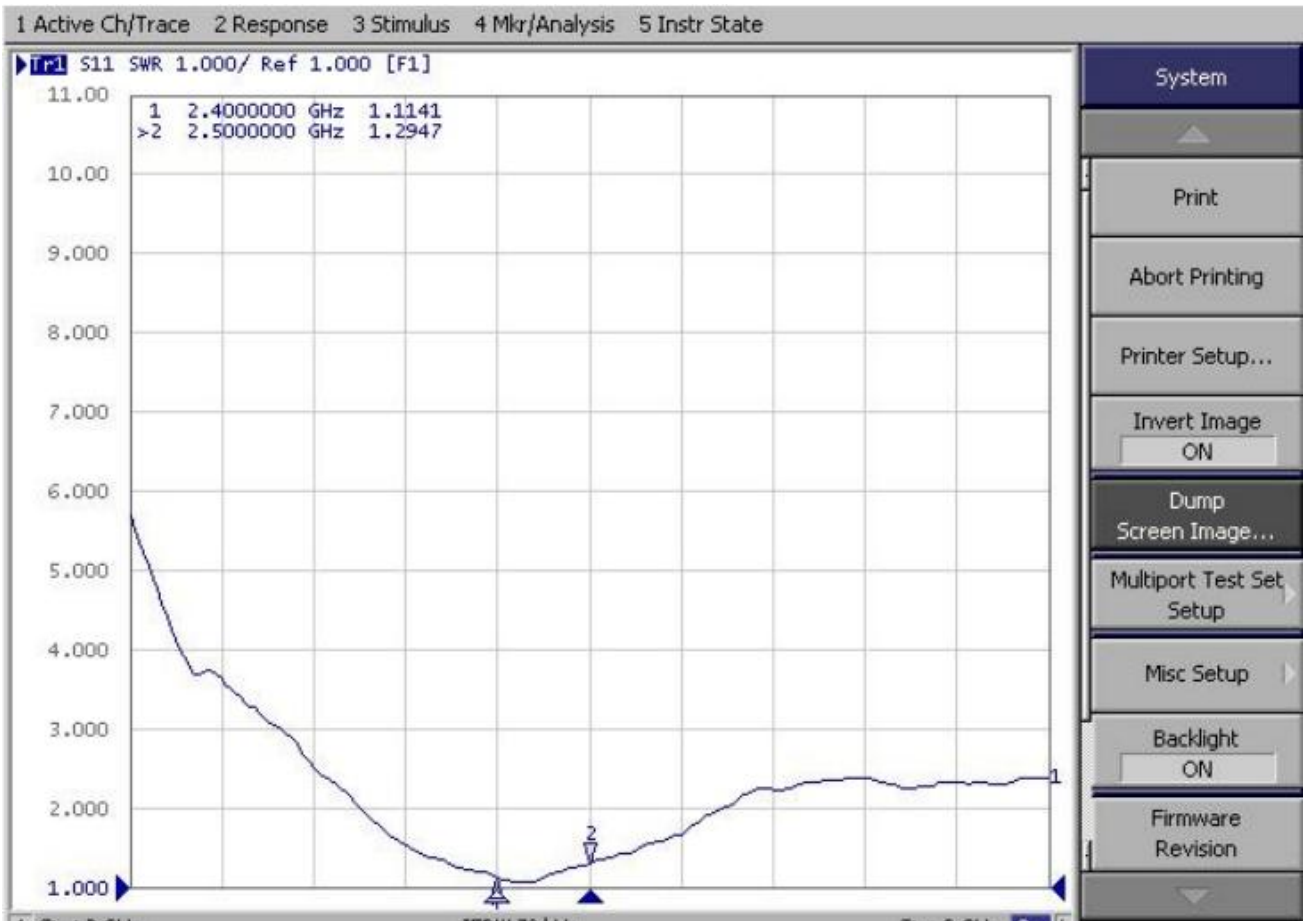
制造厂商承认 Manufacturer recognition			
销售代表 Sales	拟制 Drafters	核实 check	批准 Approver
王大楠	陈岳鑫	赵坤	王志强

感谢给予敝公司送样承认之机会. 如惠蒙承认通过, 烦请将此表签回敝公司.

Thank you for giving us the chance to approve samples. If you agree to pass it, please kindly send it back to us.

I. Product size chart





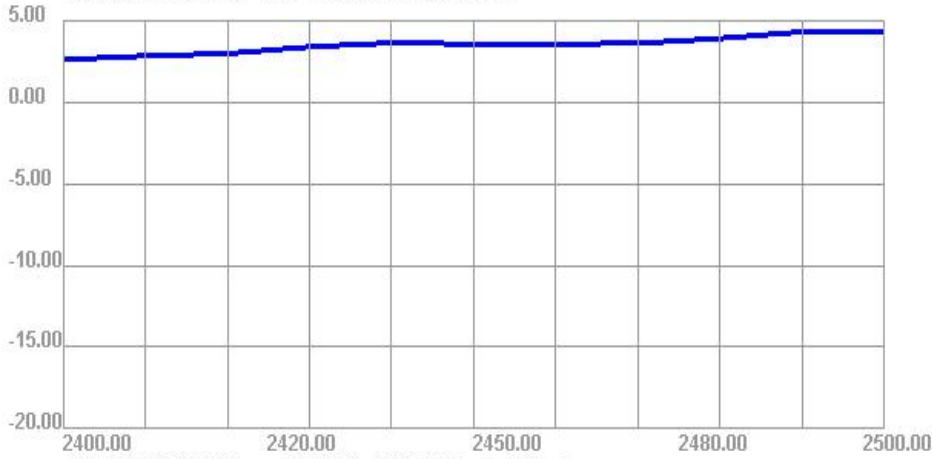
2. Product actual pictures



Passive Test For WIFI-2.4G

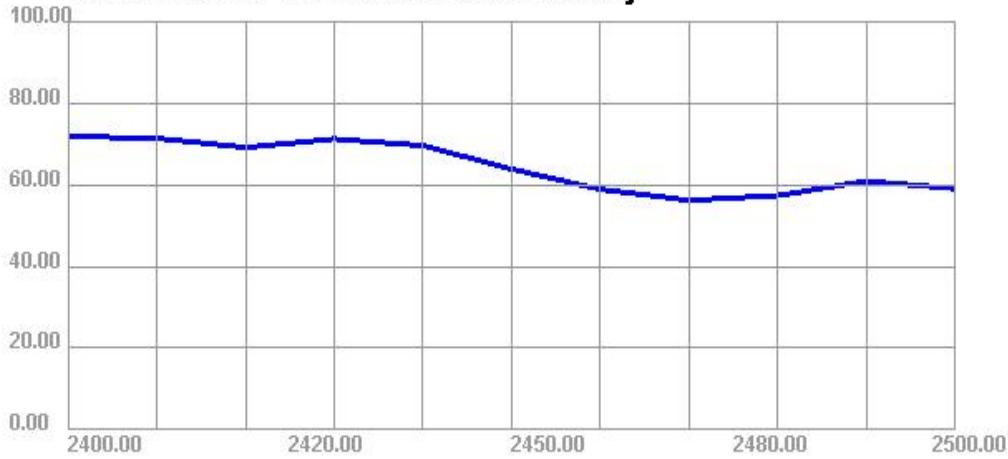
Freq (MHz)	Effi (%)	Effi (dB)	Gain (dBi)	Gain (dBd)	UHS (%)	DHIS (%)	Max (dB)	Min (dB)	irectivity (dBi)	Beamwidth (3dB)	AttH (dB)	AttV (dB)
2400	71.87	-1.43	2.6	0.45	35.522	36.346	2.6	-15.77	4.04	120	45.51	45.06
2410	71.39	-1.46	2.83	0.68	35.618	35.775	2.83	-15.49	4.3	120	45.14	44.7
2420	69.17	-1.6	2.98	0.83	34.271	34.894	2.98	-16.24	4.58	60	45.67	45.27
2430	71.24	-1.47	3.38	1.23	34.984	36.254	3.38	-17.07	4.85	60	45.28	44.87
2440	69.62	-1.57	3.64	1.49	33.411	36.213	3.64	-18.94	5.21	60	45.75	45.35
2450	63.85	-1.95	3.56	1.41	30.033	33.822	3.56	-20.94	5.51	60	45.36	44.92
2460	58.91	-2.3	3.57	1.42	26.937	31.973	3.57	-19.72	5.86	0	45.39	44.93
2470	56.21	-2.5	3.61	1.46	25.131	31.083	3.61	-18.39	6.11	0	45.43	44.94
2480	57.37	-2.41	3.9	1.75	25.101	32.274	3.9	-16.11	6.32	0	45.48	45
2490	60.91	-2.15	4.31	2.16	26.383	34.531	4.31	-15	6.47	0	45.64	45.23
2500	59.08	-2.29	4.3	2.15	25.542	33.533	4.3	-13.9	6.59	0	45.93	45.51

2400.00MHz - 2500.00MHz Gain

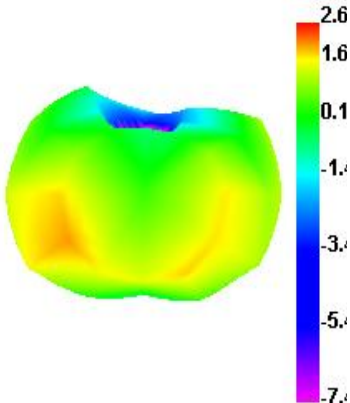


Application Information	
04Version	5.244.350
TotalTime	3m 25s 195ms
AdditionalInfor	NULL

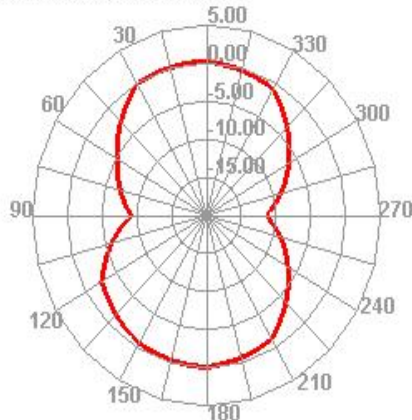
2400.00MHz - 2500.00MHz Efficiency



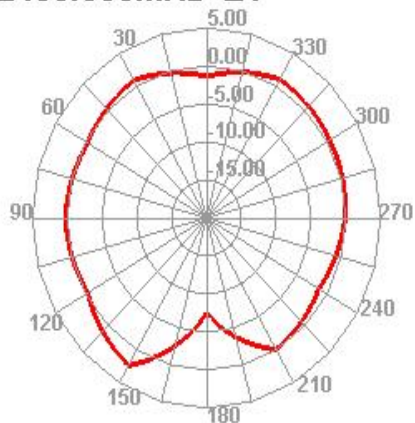
2400.000MHz



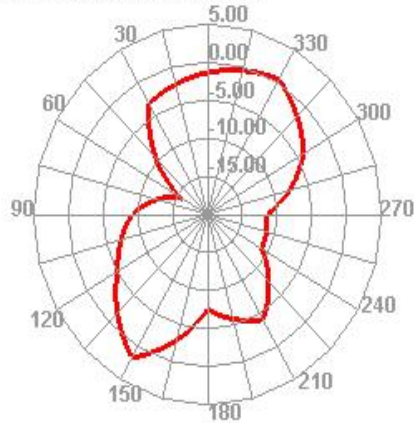
2400.000MHz H



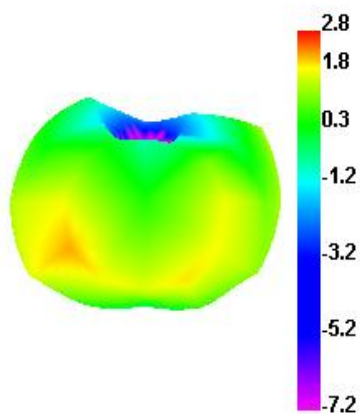
2400.000MHz E1



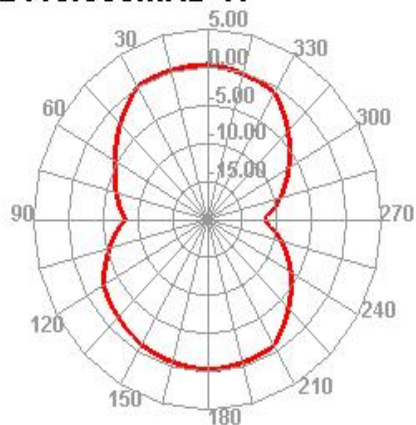
2400.000MHz E2



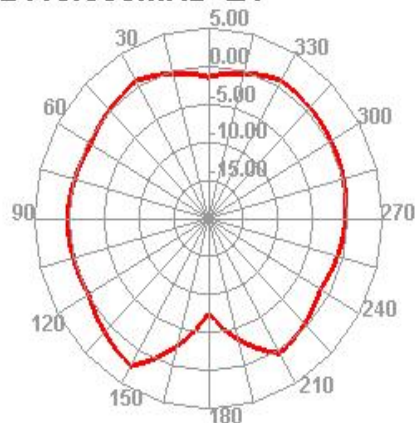
2410.000MHz



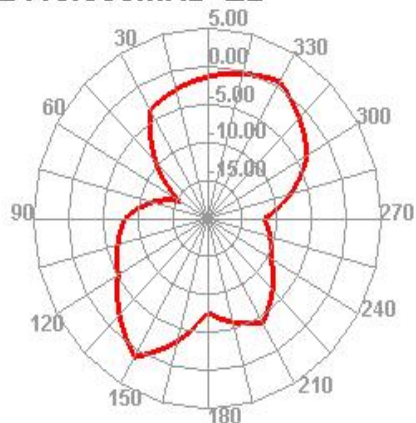
2410.000MHz H



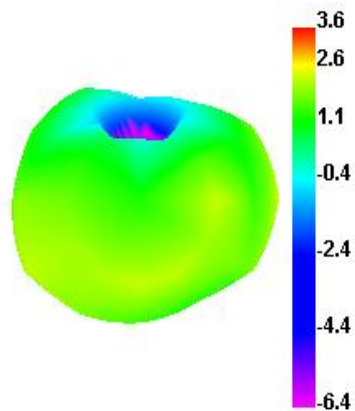
2410.000MHz E1



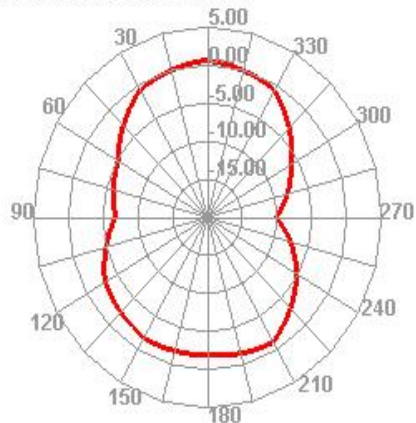
2410.000MHz E2



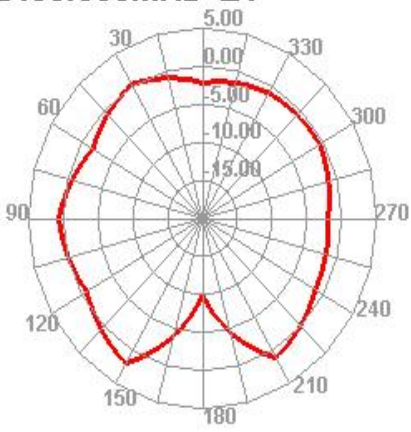
2450.000MHz



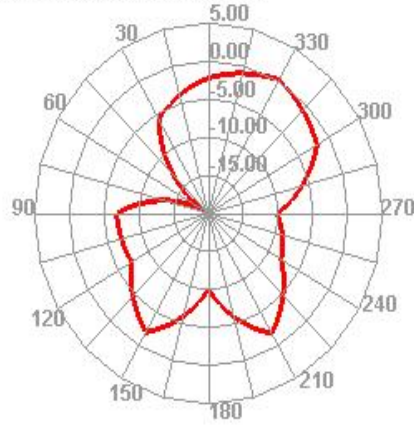
2450.000MHz H



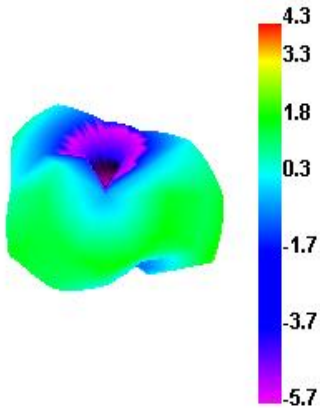
2450.000MHz E1



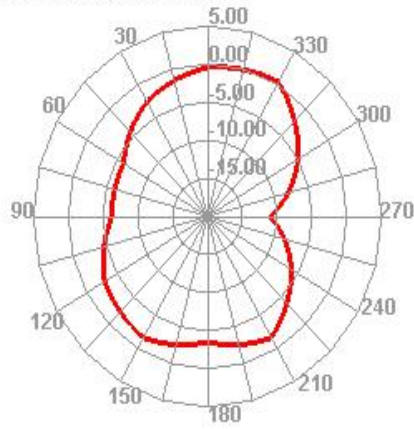
2450.000MHz E2



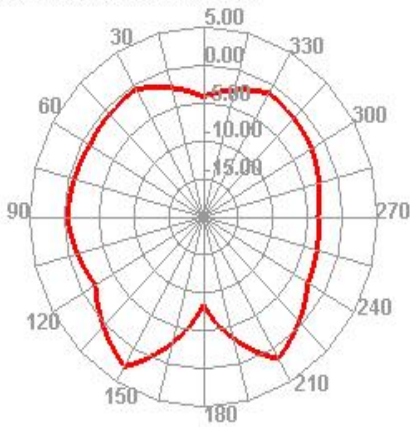
2500.000MHz



2500.000MHz H



2500.000MHz E1



2500.000MHz E2

