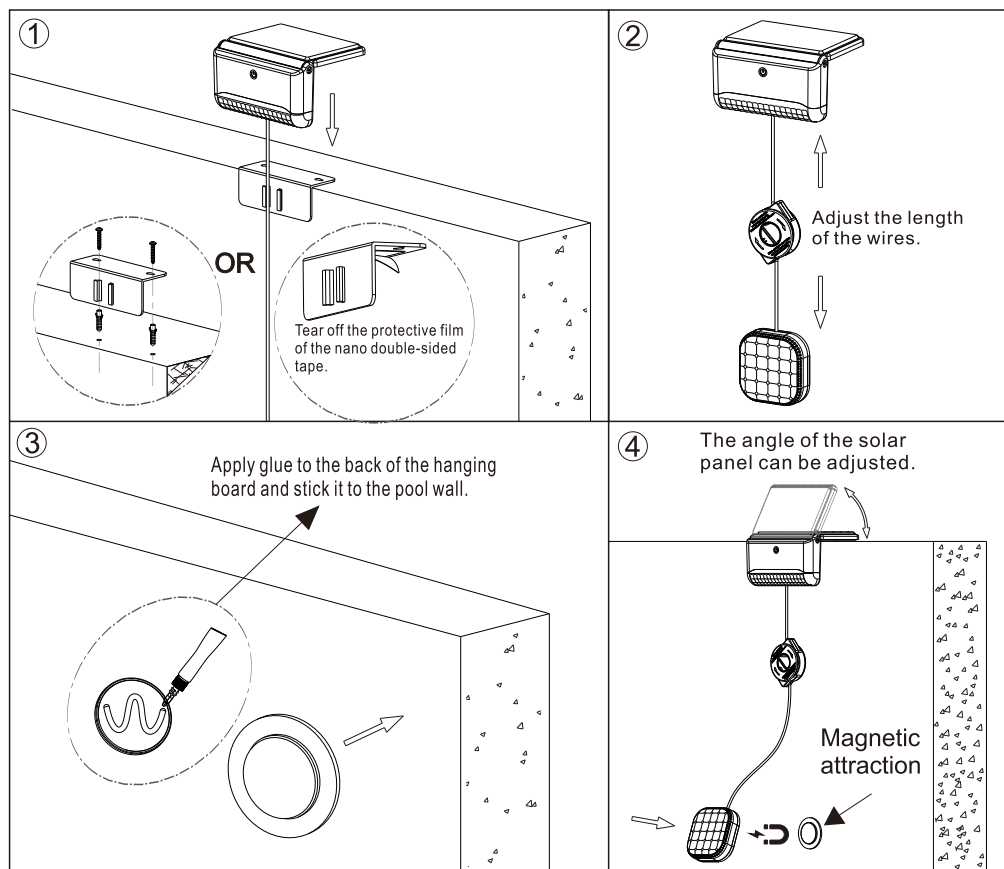
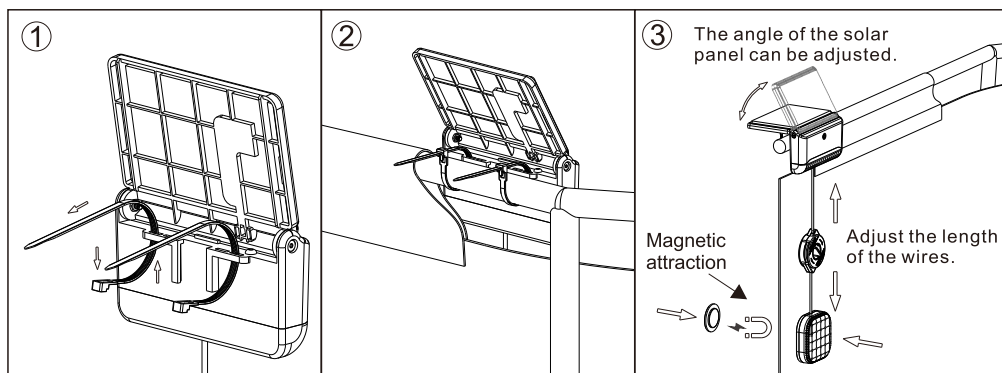


## Installation diagram

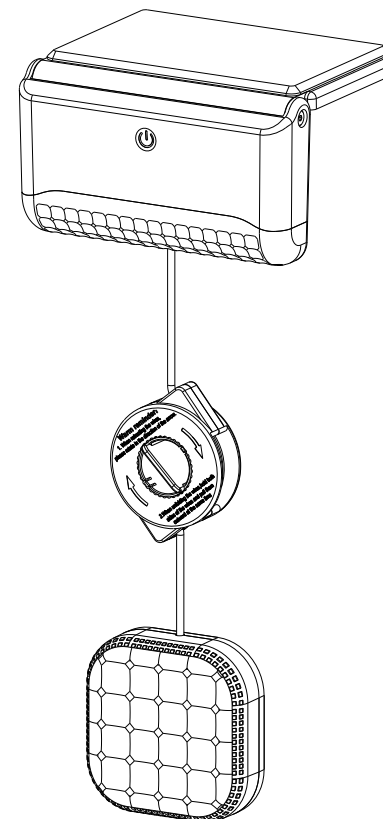
### Installation Method 1: Punching installation or Paste installation



### Installation Method 2: Bundle installation



## Manual for Solar Pool Lights



Thank you for purchasing our products.(Please refer to the actual product)

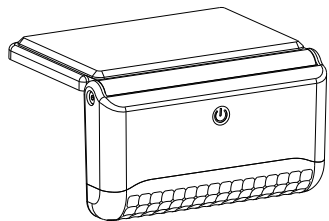
### Notice:

1. The ambient temperature for normal use is 1°C ~+50 °C(33.8°F~122°F). If it exceeds this range, the product life will be adversely affected;
2. For the product, if you encounter any problems during use, please contact us in time.

### Warning:

The built-in battery of the lamp requires the energy of sunlight to charge it. Please install the lamp in a location with sufficient sunlight during the day.

## Function description



### ⏻ Touch switch function:

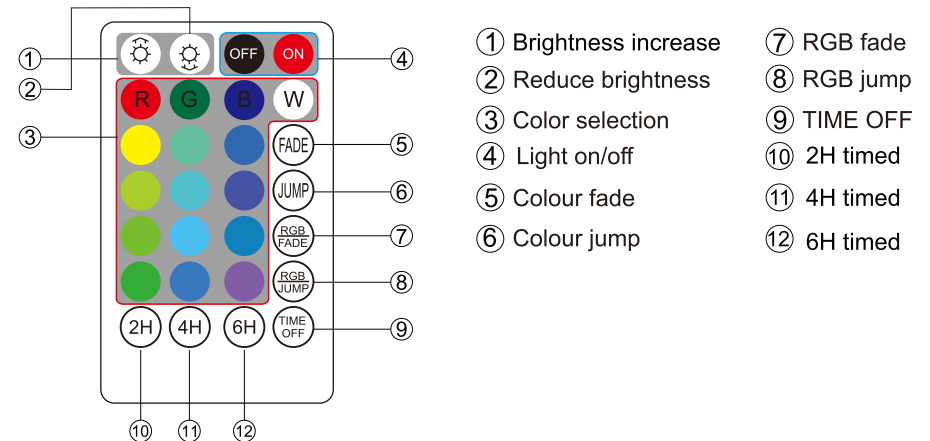
1. Touch for 2 seconds to turn on the light (default for turning on the light is RGB/FADE gradient switching mode).
2. Touch for the first time, the light is red;  
Touch for the second time, the light is green;  
Touch for the third time, the light is blue;  
Touch for the 4th time, the light is in RGB/FEDE mode.  
Cycle and switch in sequence.
3. Touch for 2 seconds to turn off the lights.

## There are two states of the lighting fixture:

1. Shutdown state: In the shutdown state, the lights are turned off and the remote control cannot control the lamps. The lamps can be charged under the sun.
2. Power on status: Touch the main light switch for 2 seconds to turn on the light. After turning on, the light will work normally and can be controlled by the remote control.
  - 1) Turn on the light in a well lit space, and the lamp will turn on and light up normally. At the same time, the light sensing function of the lamp will be activated, and the light will automatically turn off after 1 second; This is a normal setting (when operating the touch switch or remote control of the lighting fixture, there will be a flashing light feedback).
  - 2) When turning on the lights at night or in a dark space environment, the lamps can be turned on and lit normally, while the light sensing function of the lamps will not be activated, and the lamps are in a normal continuous lighting working state
  - 3) The normal working state of the lamp after turning on is that it will automatically light up at night and turn off during the day to charge under sunlight.
  - 4) After turning on the lamp, it needs to be manually turned off. Touch the main light switch for 2 seconds, and the red light will flash twice to turn off the lamp;

## Remote control Function introduction

1. The remote control transmission signal is 2.4G, control distance  $\leq 10$  meters.
2. The power supply for the remote control is AAA Type Battery (No. 7 Battery/LR03 /Am4).



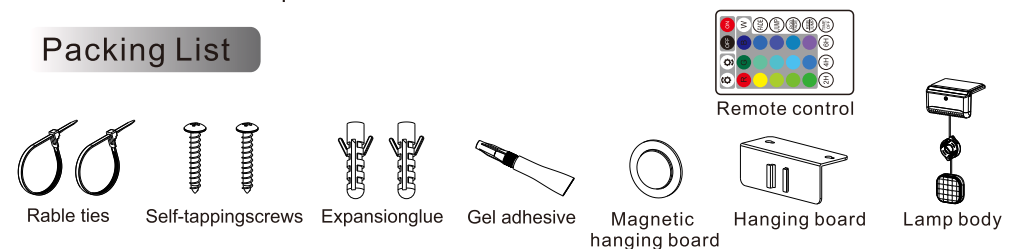
## Lamp and remote control code matching function

1. When the light fixture is turned on, press and hold the ON button on the remote control for 3 seconds, and the light fixture will flash twice. At this point, the remote control and the light fixture have successfully matched the code.

### Tips:

- 1) The same remote control can simultaneously code with multiple lighting fixtures that are turned on. After successful code matching, this remote control can control multiple lighting fixtures;
- 2) When a lamp that has already been successfully paired with the remote control needs to be used with a new remote control, the new remote control must be successfully paired with the lamp before it can be used.
- 3) If multiple lamps are purchased simultaneously and require one-to-one remote control for use, it is necessary to turn on one lamp separately and follow the instructions to successfully match the code. Then turn off the lamp that has been successfully matched, and turn on another lamp to match the remote control.

## Packing List



## FCC WARNING

This device complies with part 15 of the FCC Rules. Operation is subject to the following two conditions: (1) This device may not cause harmful interference, and (2) this device must accept any interference received, including interference that may cause undesired operation.

Note: This equipment has been tested and found to comply with the limits for a Class B digital device, pursuant to part 15 of the FCC Rules. These limits are designed to provide reasonable protection against harmful interference in a residential installation. This equipment generates, uses and can radiate radio frequency energy and, if not installed and used in accordance with the instructions, may cause harmful interference to radio communications. However, there is no guarantee that interference will not occur in a particular installation. If this equipment does cause harmful interference to radio or television reception, which can be determined by turning the equipment off and on, the user is encouraged to try to correct the interference by one or more of the following measures:

- Reorient or relocate the receiving antenna.
- Increase the separation between the equipment and receiver.
- Connect the equipment into an outlet on a circuit different from that to which the receiver is connected.
- Consult the dealer or an experienced radio/TV technician for help.

Note: The Grantee is not responsible for any changes or modifications not expressly approved by the party responsible for compliance. Such modifications could void the user's authority to operate the equipment.

The device has been evaluated to meet general RF exposure requirement.

This equipment complies with FCC's RF radiation exposure limits set forth for an uncontrolled environment. This device and its antenna(s) must not be co-located or in conjunction with any other antenna or transmitter.