

# KU-CSJ-01, Intelligent controller



- Product name: KU-CSJ-01, LED lamp with intelligent controller Lotus Lantern (Lotus Lan. Bluetooth BLE single-mode direct mobile phone APP
- Product size: No. 1 mold 3 keys (L67 \* W34 \* H17mm)
- Function configuration: support DC5-24V, 1 support 3 button function, 2 support Lotus Lantern (Lotus Lantern) Bluetooth BLE direct mobile phone APP, 3 support 2.4G remote control.
- Product use: LED lamp strip, LED hard lamp strip use.
- Functional effects: switch, switching mode, brightness / speed adjustment effect,,
- Through the switch mode function key, there are a total of 12 scene modes, cyclic switching (1. red 2. green 3. blue 4. cyan 5. purple 6. yellow 7. white static color, 8. three-color jump 9. seven-color jump 10. three-color gradient 11. seven-color gradient 12. white flashing mode),
- Brightness / speed can be adjusted by pressing the up and down keys, and brightness can be adjusted in the static color mode, and speed can be adjusted in the dynamic mode.
- In static: adjust the brightness by pressing the up and down shift keys,
- In motion: Shift up or down in accordance with the speed adjustment
- Function feasible solution: support RGB colorful three ways, support 3 buttons function, support Lotus Lantern (Lotus Lantern) Bluetooth BLE single-mode direct mobile phone APP, support 2.4G remote control more experience

# Bao lian deng APP user manual

## 1. Software Overview

### 1.1 Overview

Bao lian deng is a mobile APP program that controls LED light strips with Apple or Android mobile phones.

The mobile phone control mode replaces the traditional infrared, 433, 2.4G and other old remote control mode, which is convenient, fast, powerful and extensible!

You can control the color, brightness and color temperature of the intelligent LED strip through the mobile phone APP, and you can also set various flashing patterns. You can also make the LED strip move in rhythm with the music. You only need to keep the LED strip powered on, open the BaoLingDeng APP, connect one or more LED strips through Bluetooth, so as to realize the various settings and control of multiple LED strips. The operation is very simple and easy to learn!

### 1.2 Functions

- Color and brightness adjustment of 60,000 colors for color LED strip, brightness and color temperature adjustment for monochrome LED strip
  - Playing mobile phone music or turning on an audio device can change the color and brightness of the lights according to the rhythm of the music.  
The rhythm is beautiful and magnificent.
- Multiple built-in color changing modes, away from the automatic control of the mobile phone;
- Long-distance control without direction restriction, as well as multi-to-multi group control mode;
- One connection, automatic reconnection, worry-free mode.

### 1.3 Performance

Bao lian deng APP has good ease of use and compatibility. It has been tested on hundreds of mobile phones and is compatible with the current market. More than 95% of the mobile phones. APP is small and convenient, occupies less system resources, and has low requirements for mobile phone configuration. The control delay is small, the operation feeling is good, and the visual feeling of lamp control is smooth.

## 2. Operating environment

This APP requires Android version 4.3 and iOS version 8.0 or above. Mobile phone configuration is not limited.

## 3. Method of use

Note: The download and usage methods of the Android version and the iOS version are basically the same, and this example is for the Android version.

### 3.1 App Download

For both iOS and Android systems, you can scan the QR code to download the Magic Lotus Lantern app. Open the "scan" function browser, QQ, WeChat and other application tools, scan the "Lotus Lantern" two-dimensional code.

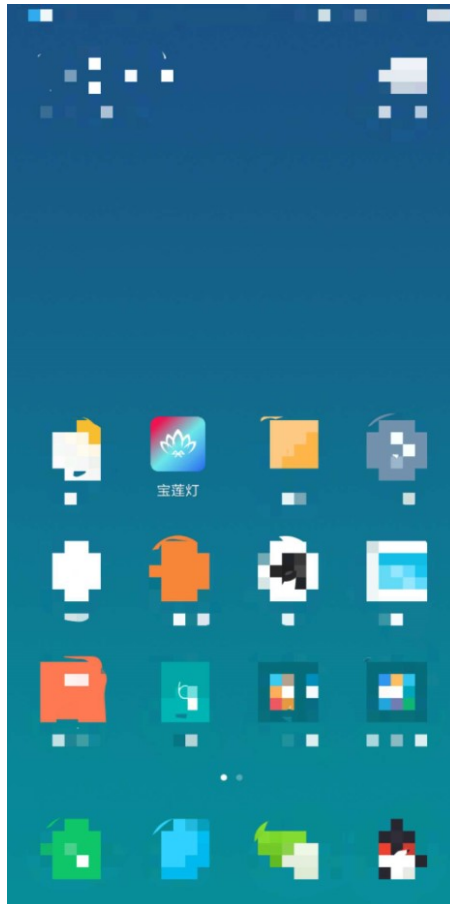


After the software installation download is successful, click the APK installation. After the installation is completed, the following style of program icon will appear on the desktop::



## 3.2 Software operation

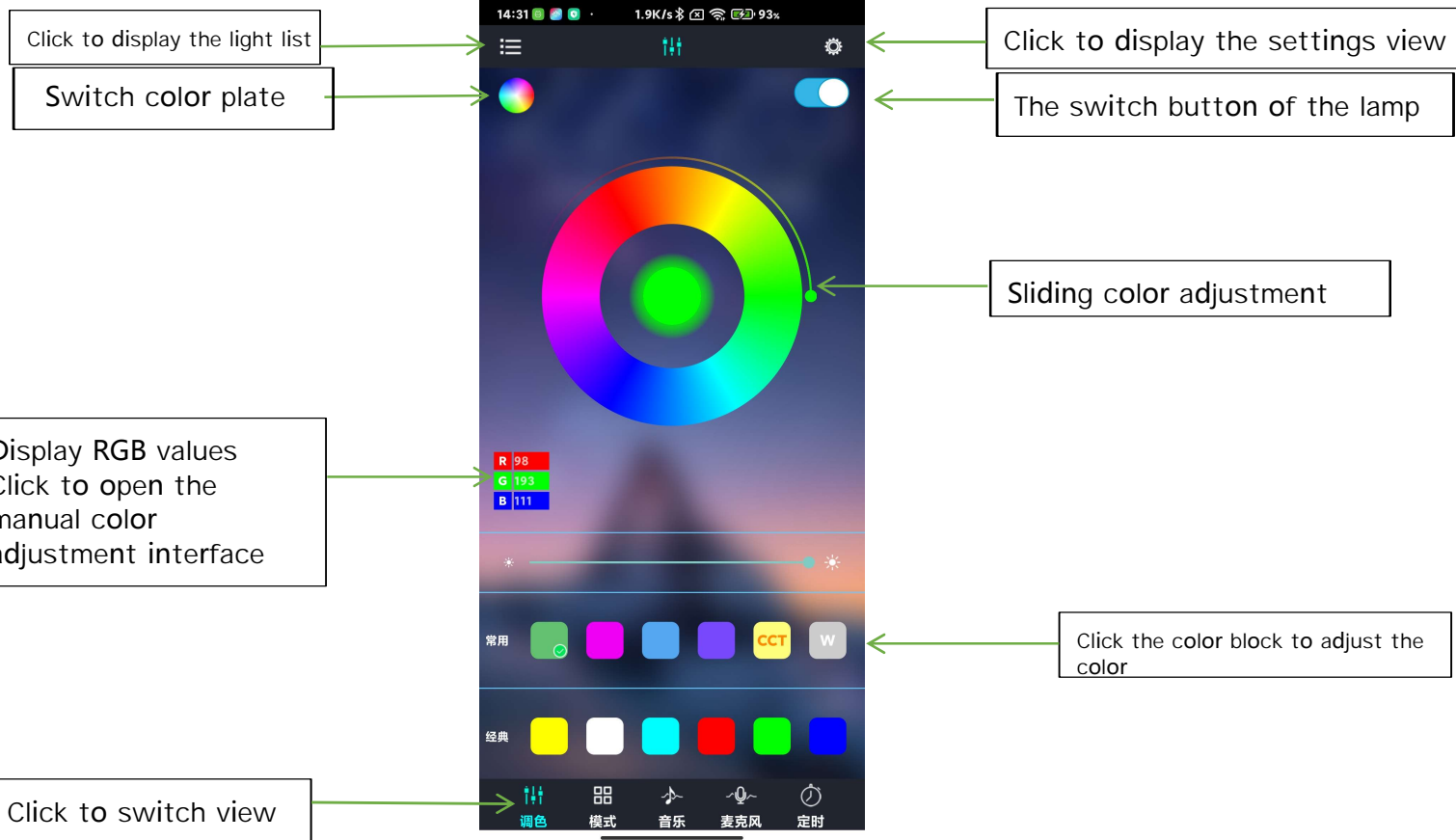
(1) Tap the Baoliandeng APP icon to enter the APP page:



(2) After entering the APP interface, if Bluetooth is not turned on, " Baolian Lantern application, want to turn on Bluetooth" will pop up. Click [Allow].



(3) Switch to the color interface:

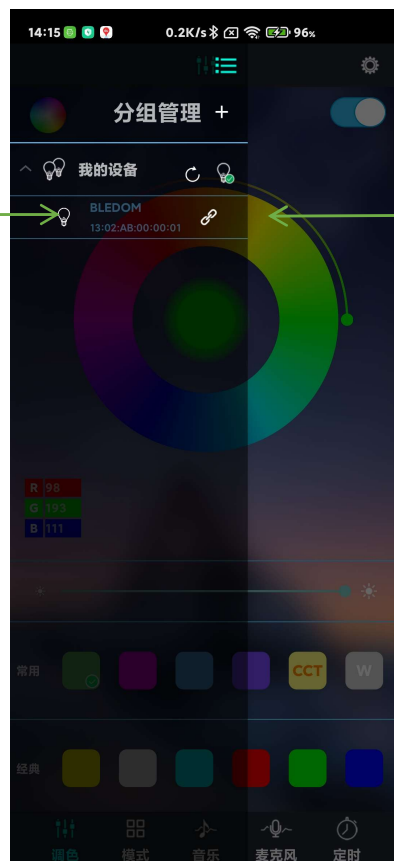


(4) Click on the device list to view the device:

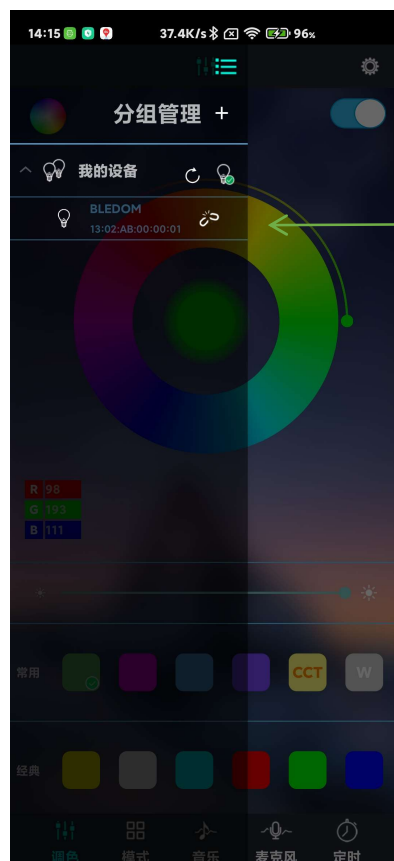
Automatic connection after  
searching for the device

Equipment list

The state of the device  
connection



The state of equipment  
disconnection



(5) Click the RGB adjustment button to enter the manual RGB value adjustment interface:



(6) Switch to the mode interface:



Scroll up and down to  
adjust the mode

Sliding adjustment speed

Adjust brightness by sliding

(7) Switch to the music interface:

Previous song, play/pause, next song

Switch playback mode

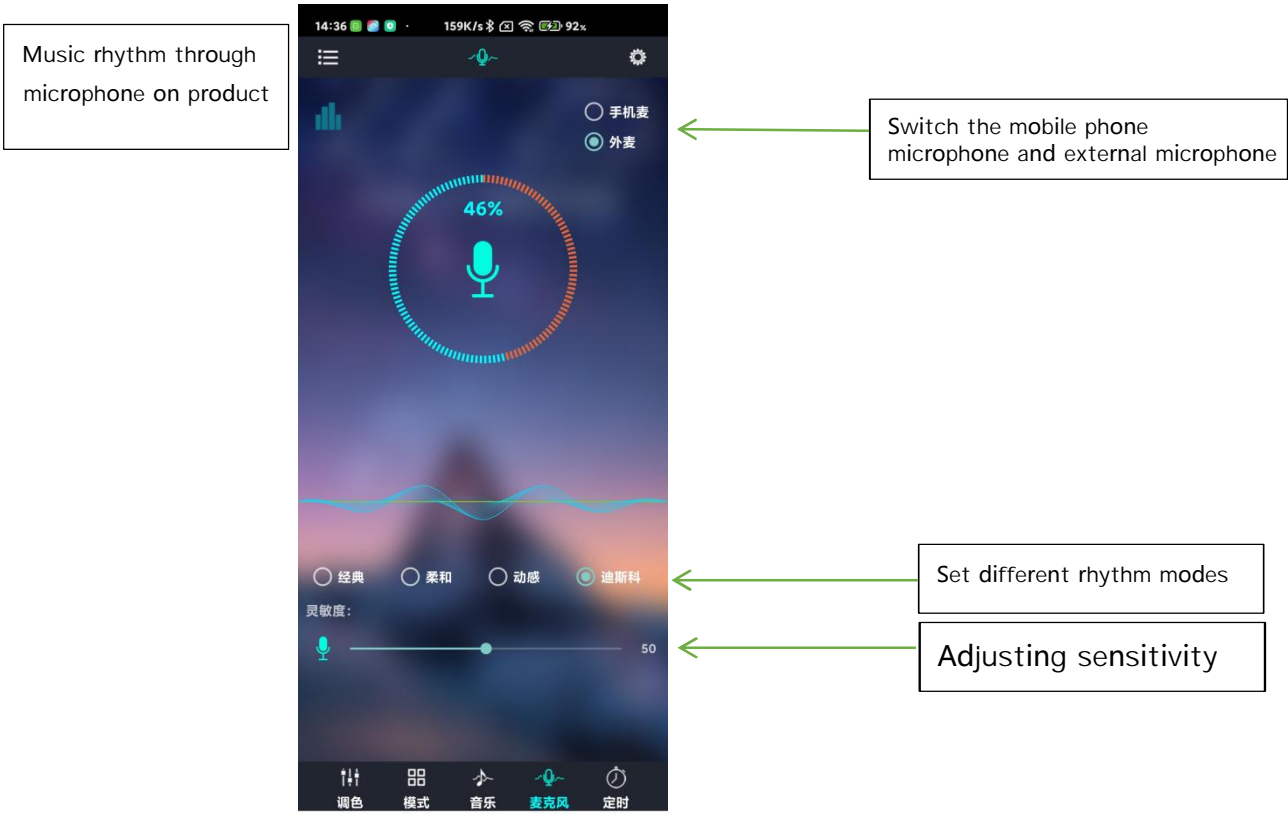
Music list

(8) Switch to the microphone rhythm interface:

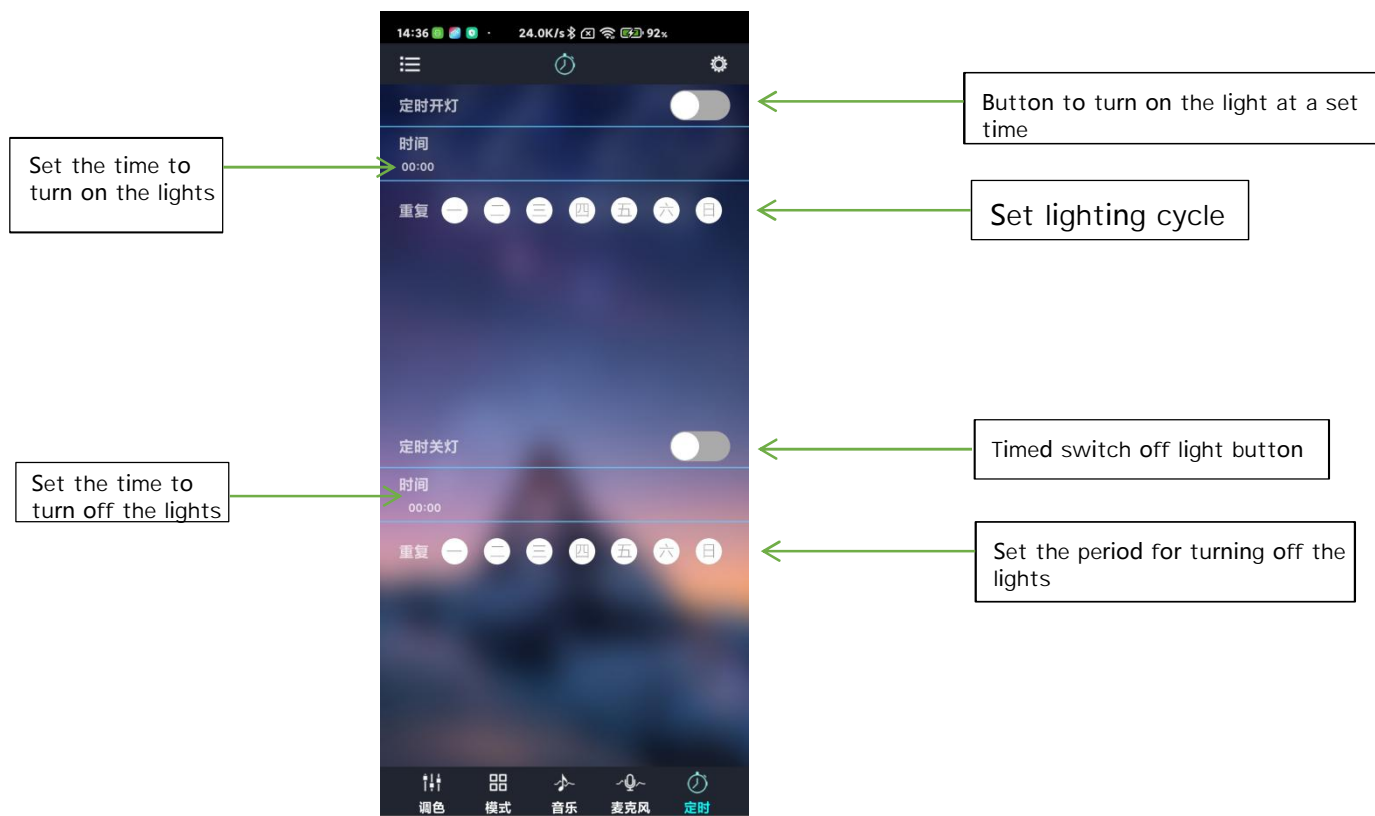
Music rhythm through mobile phone microphone

Switch the mobile phone microphone and external microphone

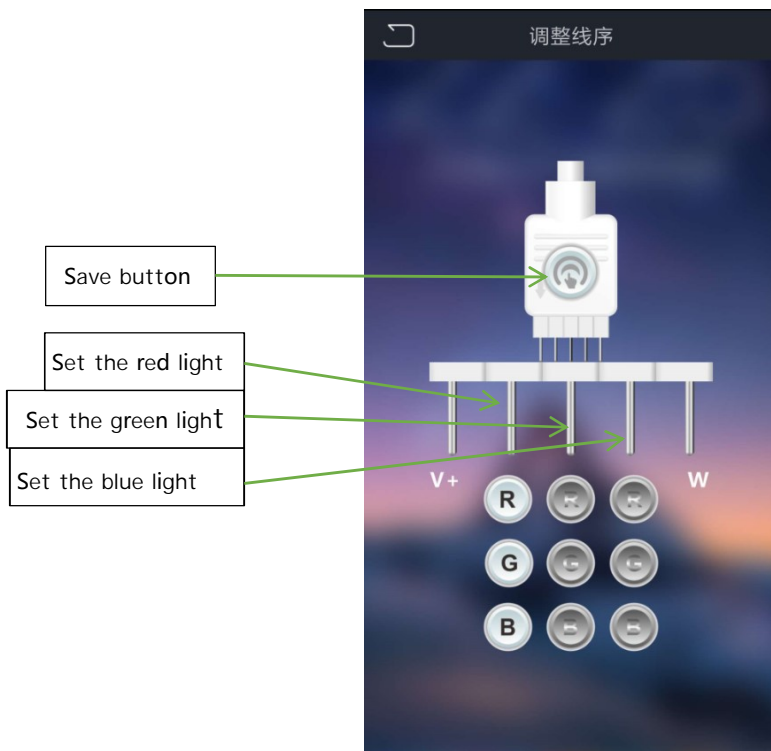




(9) Switch to the timer interface:



(10) Switch to the sequence adjustment interface:



#### FCC Statement

This equipment has been tested and found to comply with the limits for a Class B digital device, pursuant to part 15 of the FCC Rules. These limits are designed to provide reasonable protection against harmful interference in a residential installation. This equipment generates, uses and can radiate radio frequency energy and, if not installed and used in accordance with the instructions, may cause harmful interference to radio communications. However, there is no guarantee that interference will not occur in a particular installation. If this equipment does cause harmful interference to radio or television reception, which can be determined by turning the equipment off and on, the user is encouraged to try to correct the interference by one or more of the following measures:

- Reorient or relocate the receiving antenna.
- Increase the separation between the equipment and receiver.
- Connect the equipment into an outlet on a circuit different from that to which the receiver is connected.
- Consult the dealer or an experienced radio/TV technician for help.

Caution: Any changes or modifications to this device not explicitly approved by manufacturer could void your authority to operate this equipment.

This device complies with part 15 of the FCC Rules. Operation is subject to the following two conditions: (1) This device may not cause harmful interference, and (2) this device must accept any interference received, including interference that may cause undesired operation.

#### RF Exposure Information

This equipment complies with FCC radiation exposure limits set forth for an uncontrolled environment. This equipment should be installed and operated with minimum distance 20cm between the radiator and your body.

NOTE 2: Any changes or modifications to this unit not expressly approved by the party responsible for compliance could void the user's authority to operate the equipment.