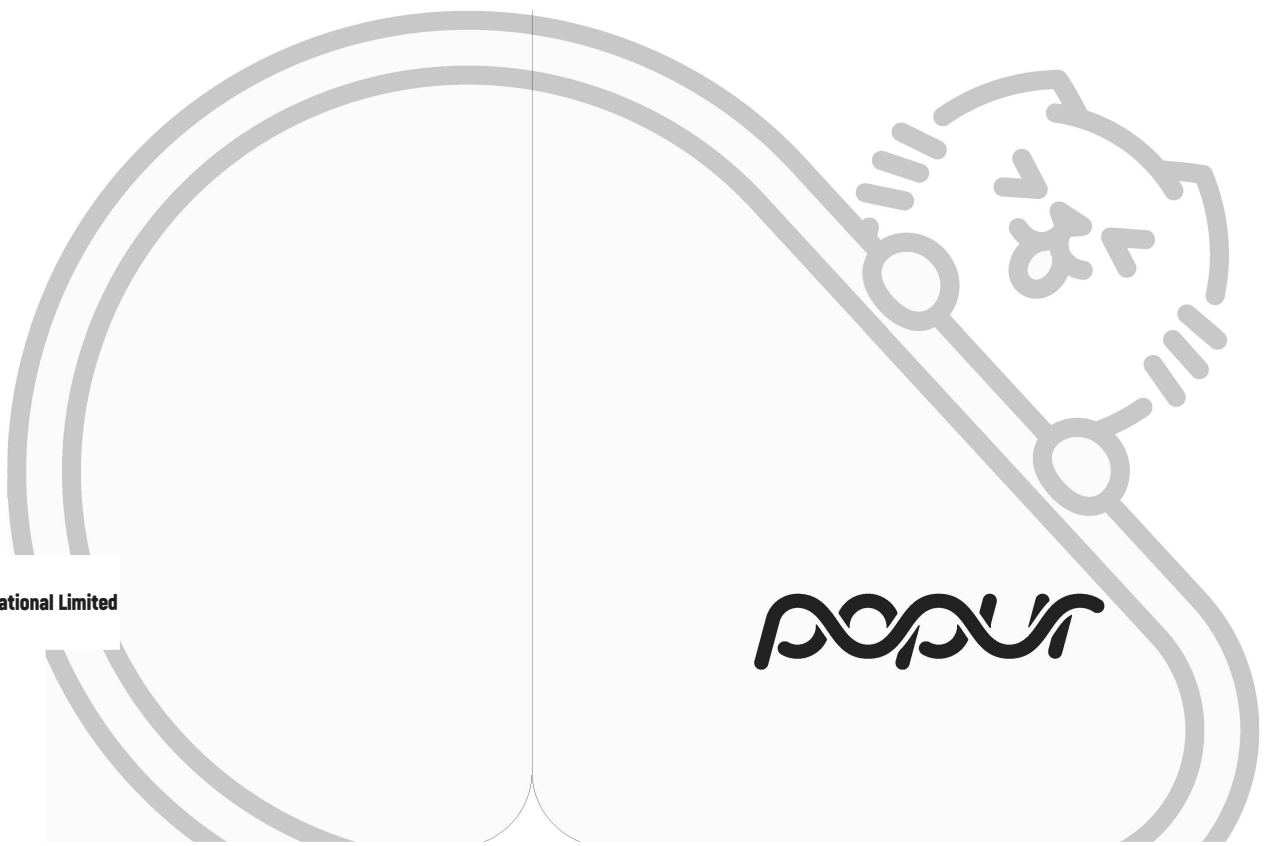


# Popur X5 Self-Cleaning Litter Box



## IMPORTANT SAFETY INSTRUCTIONS

Before using this appliance, please read all instructions and cautionary markings in this manual and on the appliance. These warnings apply to the appliance, and also where applicable, to all tools, parts, accessories, chargers or adaptors.

### ⓘ WARNING

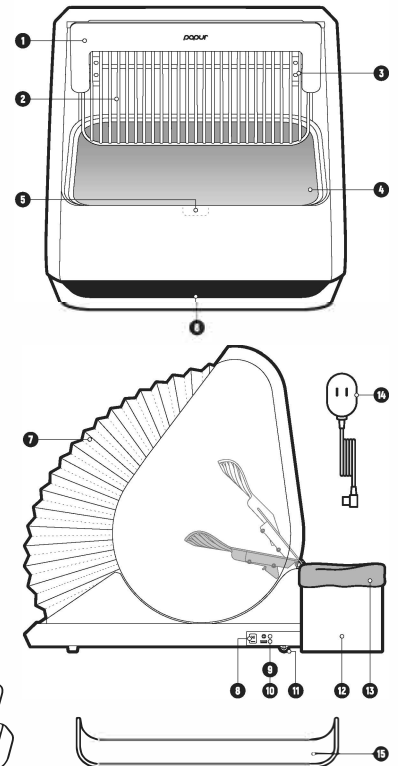
**When using an electrical appliance, basic precautions should always be followed to reduce the risk of fire, electric shock or injury hazards, including the following:**

- ❶ This appliance is not intended for use by persons (including children) with reduced physical, sensory or mental capabilities, or lack of experience and knowledge, unless they have been given supervision and instruction by a responsible person concerning use of the appliance to ensure that they can use it safely.
- ❷ Do not use this appliance as a toy. Close attention is necessary when used by or near children. Children should be supervised to ensure that they do not play with the appliance.
- ❸ Do not use outdoors. This appliance is intended for indoor household use only.
- ❹ Do not place or submerge the appliance in water.
- ❺ Do not use this appliance near bathtubs, showers, basins or other vessels containing water.
- ❻ Do not use this appliance on wet or unsteady surfaces.
- ❼ Do not handle any part of the plug or appliance with wet hands.
- ❽ Do not stretch the cable or place the cable under strain. Keep the cable away from heated surfaces. Arrange the cable away from traffic areas and where it will not be stepped on or tripped over. Do not run the appliance over the cable.
- ❾ Do not unplug by pulling on the cable. To unplug, grasp the plug, not the cable. The use of an extension cable is not recommended.
- ❿ Prevent pets from licking or biting the cable even though the cable is designed to be resistant to animal bites.
- ⓫ Do not use with a damaged or malfunctioning cable or plug.
- ⓫ Do not use the appliance if it is not working as it should, has received a sharp blow, has been dropped, damaged, left outdoors, or dropped into water.
- ⓫ Contact the Popur Helpline when a service or repair is required. Do not disassemble the appliance other than what has been instructed in this manual, as incorrect handling may result in a damage, fire, electric shock or injury.
- ⓫ Always unplug when not in use, before putting on or taking off parts, and before cleaning the appliance.
- ⓫ To clean the appliance, wipe all surfaces with a cloth using mild soap and water. Do not use bleach or chemicals as they can act as a repellent to your cat.
- ⓫ Use only Popur official accessories, replacement parts, chargers, adaptors and batteries with this appliance.
- ⓫ Use only low-dust, lightweight clumping cat litter with this appliance. Do not overload.
- ⓫ This appliance contains movable or transformable parts. Do not contact with the appliance during its operation.
- ⓫ This appliance is intended solely for the safe disposal of cat waste, and can be used by domestic cats at any age, unless they are incapacitated. Do not attempt to use the appliance for any other purpose.
- ⓫ The specific temperament of your cat may not work with this appliance. Do not use this appliance if your cat is aggressive or exhibits stress.

## READ AND SAVE THIS MANUAL

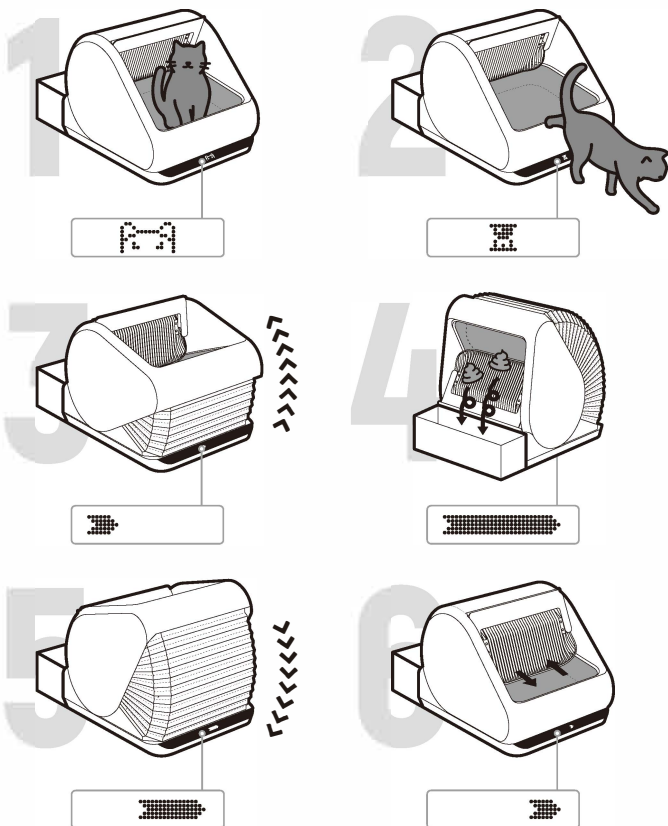
### DIAGRAM

- ❶ Frame
- ❷ Filter
- ❸ Connector
- ❹ Liner
- ❺ Grip
- ❻ Display
- ❼ Shield
- ❽ Button
- ❾ Power Port
- ❿ Extension Port
- ⓫ Caster
- ⓫ Waste Bin (various models)
- ⓫ Trash Bag
- ⓫ Adaptor
- ⓫ Fence
- ⓫ Scoop



## AUTOMATED SCOOPING

Presence sensors in the Popur X5 Self-Cleaning Litter Box can detect adult cats as well as kittens. Specifically, a built-in millimeter wave radar is highly responsive to any movements within the box area. In the default Automatic Mode, the box will run a self-cleaning cycle after a cat's business, during which it separates waste from litter, chips away any sticky clumps, then dumps them into the waste bin, and finally re-levels the remaining clean litter.



Press the button anytime to start, pause or continue cleaning. **The process will not be interrupted by cats once it begins, since it's utterly safe.** While the default configuration should suffice in most cases, some settings can be adjusted on the Popur App to better accommodate you and your cat. To unlock more features, scan the QR code to download Popur App or find it on App stores.



iOS App



Android App

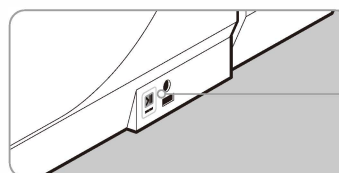
If the box didn't scoop automatically after your cat finished its business, it's possible that:

- A cat entered the box during the Wait Time thus reset the countdown.
- You opted for Manual Mode in Popur App.
- You turned on Do-Not-Disturb in Popur App and it was during the quiet hours.
- Your cat did it too fast such that the box treated it as a distraction.
- The waste bin was full and must be emptied before scooping.
- Power had been cut off due to outage or other reasons.
- You activated the Curious Cat function in Popur App to avoid repetitive operations triggered by curious cats. Therefore, your cat's activity happened shortly after a completed cycle was disregarded.
- The waste bin was somehow disconnected so the box delayed cleaning to prevent spillage. If you confirm that it was "Not by me" in Popur App or ignore, the box will hibernate. To resume, you have to click "I did it", reboot device or plug in a different waste bin. Contact the Popur Helpline if the issue persists.

If your cat didn't use the box but it started cleaning unexpectedly, it's possible that:

- A cat pressed the button by mistake.
- It took you a while to top up fresh litter.
- You didn't unplug before putting on or taking off parts, or before cleaning the box.
- You forgot to deactivate the Scheduled function in Popur App and the box operated as per a cleaning schedule.

## BUTTON



Start, pause or continue cleaning

Press the button

Open or close the Filter

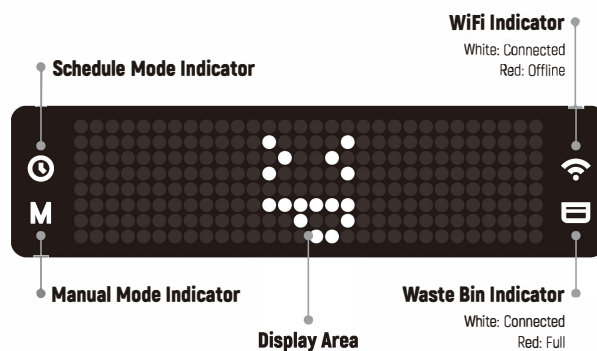
Press and hold for 3 seconds

Reset to factory settings

Press and hold for 10 seconds

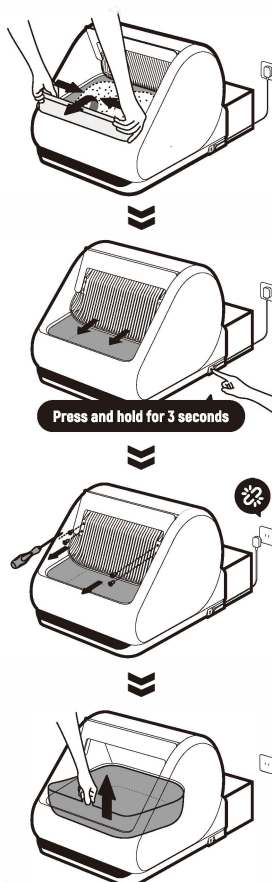
do not release when you hear a beep after 3 seconds

## DISPLAY

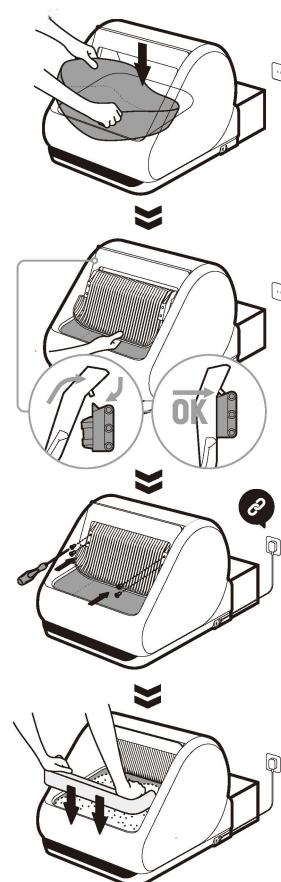


## REPLACE THE FILTER OR THE LINER

### Taking off

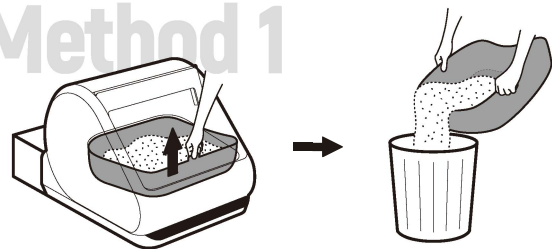


### Putting on

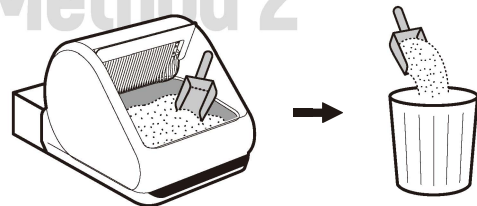


DISCARD USED LITTER

Method 1



Method 2



WARRANTY

Thank you for choosing to buy a Popur product. For two years starting from the date of purchase or delivery, the repair or replacement of your Popur product [at Popur's discretion] is covered if it is found to be functionally defective due to faulty materials or workmanship, subject to the terms of the warranty. However, indispensable legal rights of the final consumer under applicable national legislation governing the sale of consumer goods are not affected by the terms of the warranty. You shall provide proof of purchase or delivery before any work can be carried out on your Popur product. Without this proof, any work could be chargeable. The repair or replacement of your Popur product under warranty will not extend the period of the warranty. This warranty is non-transferable and shall automatically terminate if the original retail consumer purchaser resells the product. This warranty will only be valid if the product is used in the country where it was sold.

WHAT IS NOT COVERED

Popur does not guarantee the repair or replacement when a defect is the result of:

- Accidental damage, misuse, abuse, neglect, improper installation, careless operation, handling of the product which is not in accordance with the Important Safety Instructions, impacts of foreign objects, acts of God, improper storage, destruction by animals and any other cause not involving manufacturing defects in the product.
- Discoloration due to air pollution, direct sunlight, dirt, mildew, exposure to harmful chemicals or other environmental conditions.
- Use of the product for anything other than normal domestic household purposes.
- Use of parts and accessories which are not genuine Popur components
- Repairs or alterations carried out by parties other than Popur or its authorized agents
- Normal wear, tear, deformation or degradation of the product and its component, in particular, the Filter and the Liner.
- Normal battery performance decay (where applicable)

SPECIFICATIONS

<b>Product</b> : Popur X5 Self-Cleaning Litter Box	<b>Max. Load</b> : 33 lbs or 3.2 gal (15 kg or 12 L)
<b>Suitable for</b> : Pet cats	<b>Rated Input</b> : DC 12V 2A
<b>Weight</b> : 31 lbs (14 kg)	<b>Rated Power</b> : 24W
<b>Dimension</b> : 23.3" x 21.2" x 18.2" (59 x 54 x 46cm)	<b>Wireless</b> : 2.4GHz WiFi
<b>Litter Area</b> : 19.7" x 15.7" x 3.9" (50 x 40 x 10cm)	<b>Mobile App</b> : iOS 11 or Android 6.0 and above

FCC Warning

This device complies with part 15 of the FCC rules. Operation is subject to the following two conditions: (1) this device may not cause harmful interference, and (2) this device must accept any interference received, including interference that may cause undesired operation.

Changes or modifications not expressly approved by the party responsible for compliance could void the user's authority to operate the equipment.

NOTE: This equipment has been tested and found to comply with the limits for a Class B digital device, pursuant to part 15 of the FCC Rules. These limits are designed to provide reasonable protection against harmful interference in a residential installation. This equipment generates uses

and can radiate radio frequency energy and, if not installed and used in accordance with the instructions, may cause harmful interference to radio communications. However, there is no guarantee that interference will not occur in a particular installation. If this equipment does cause harmful interference to radio or television reception, which can be determined by turning the equipment off and on, the user is encouraged to try to correct the interference by one or more of the following measures:

- Reorient or relocate the receiving antenna.
- Increase the separation between the equipment and receiver.
- Connect the equipment into an outlet on a circuit different from that to which the receiver is connected.
- Consult the dealer or an experienced radio/TV technician for help.

Radiation Exposure Statement

This equipment complies with FCC radiation exposure limits set forth for an uncontrolled environment. This equipment should be installed and operated

with minimum distance 20cm between the radiator and your body.