

# User Manual

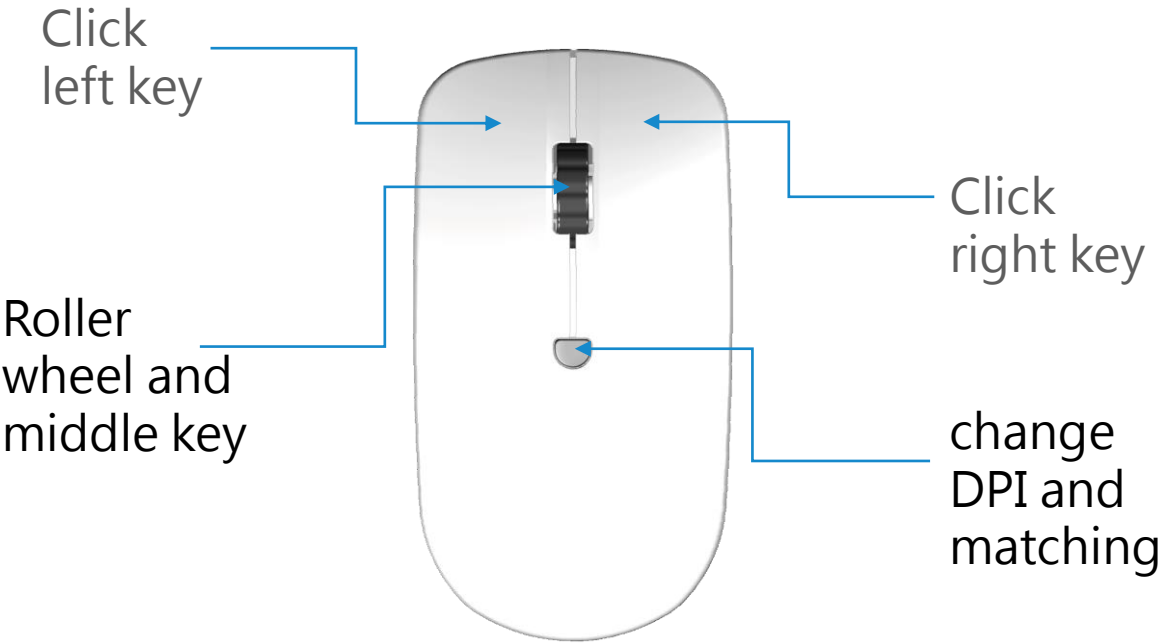


DOUBLE SHELL

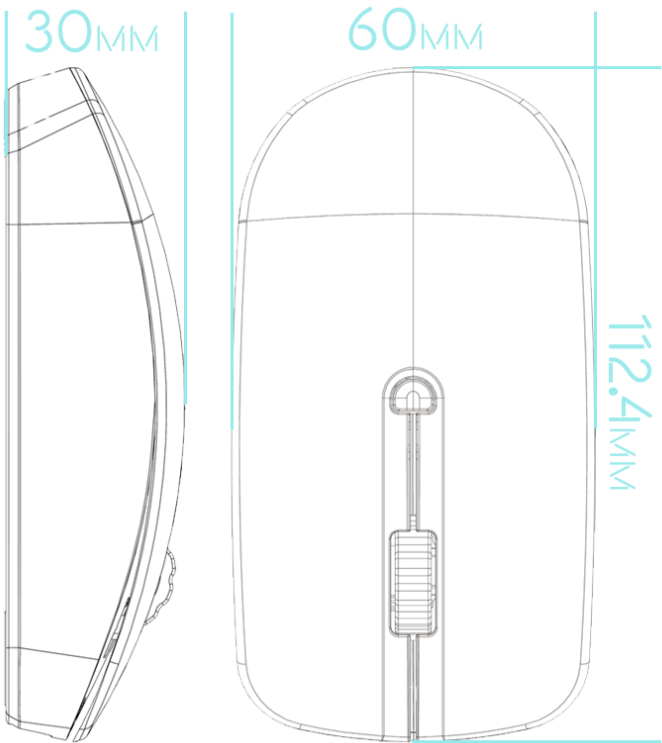
# DS-M1

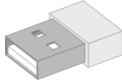
Wireless mouse

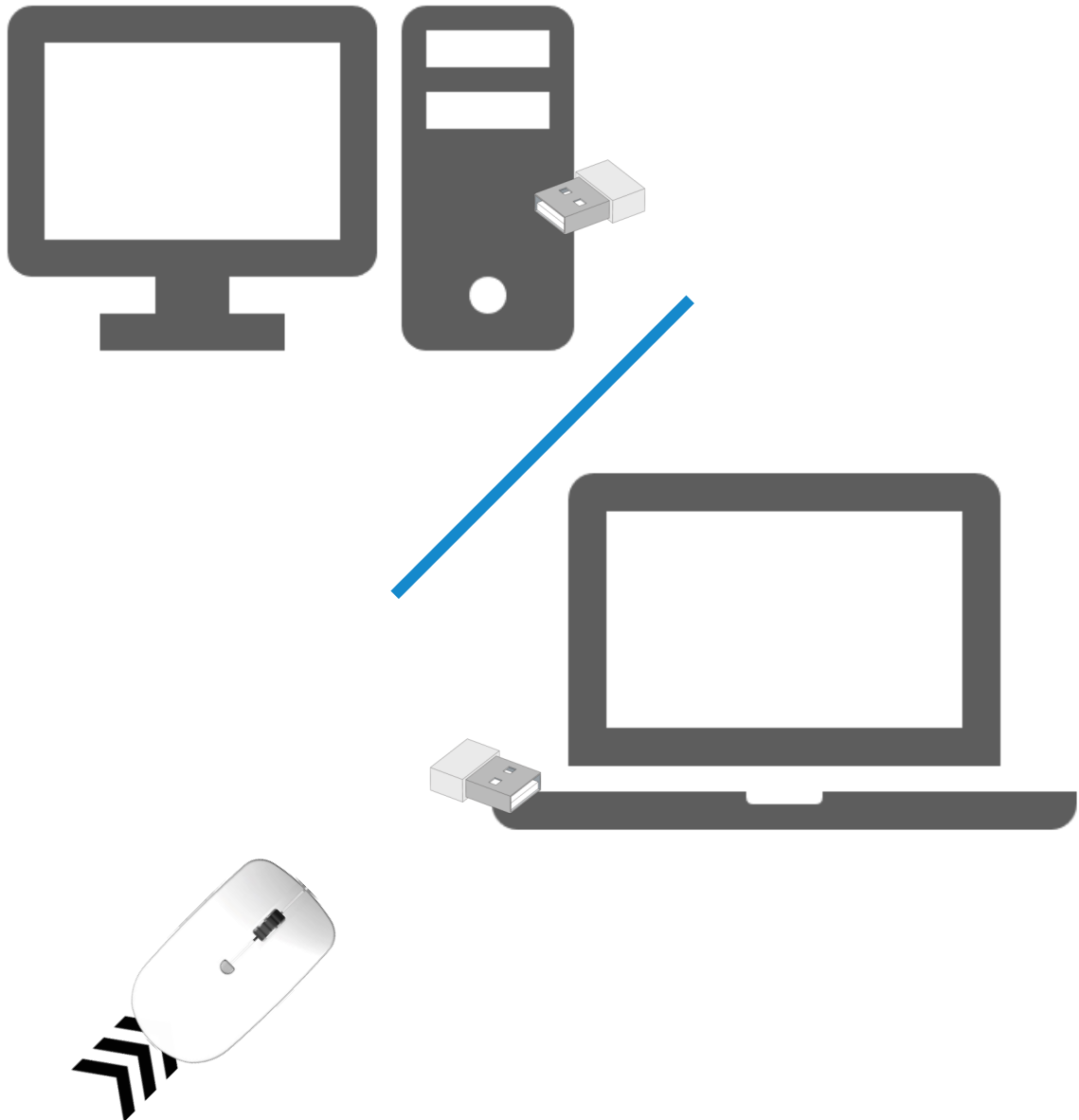
# Specification of DS-M1



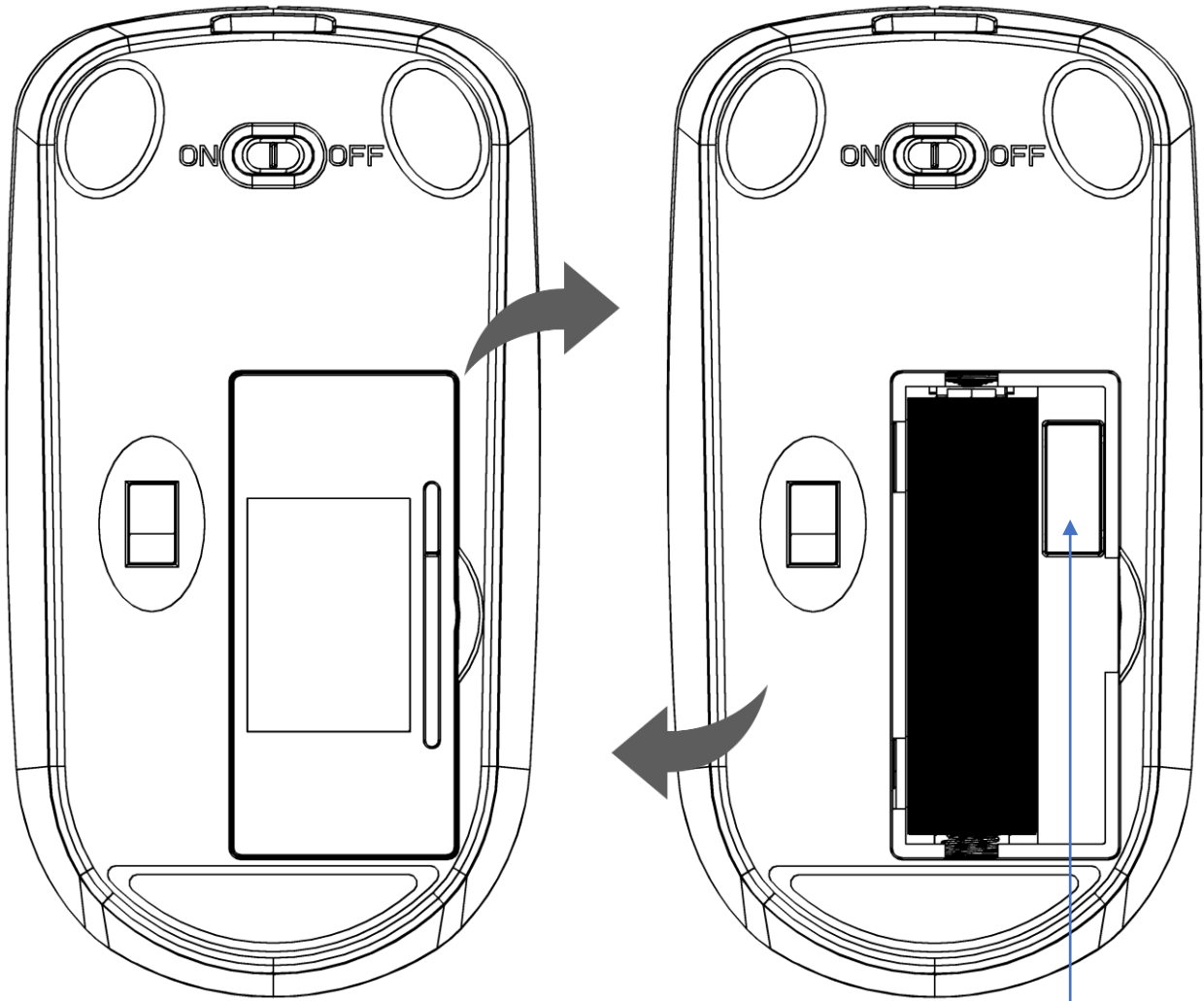
working voltage	1.5V
Working current	15mA
Max working distance	10m
Can switch to 3 DPI*	800, 1000, 1500
Silent key	3PCS
Net weight	0.18Kg



1. Plug the RF dongle  that attached with mouse into the USB port of the PC or laptop




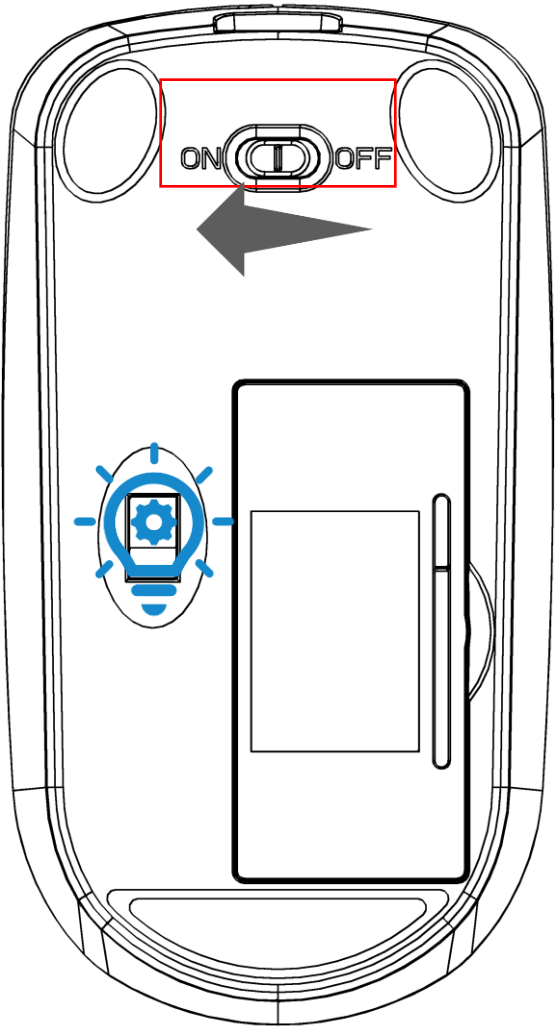
2. Insert the AA battery into the battery holder of the mouse



the depository of  
the RF dongle



3. Turn the switch to the “ON” position, the light on the bottom of the mouse  will be lighted up, the mouse is ready to use

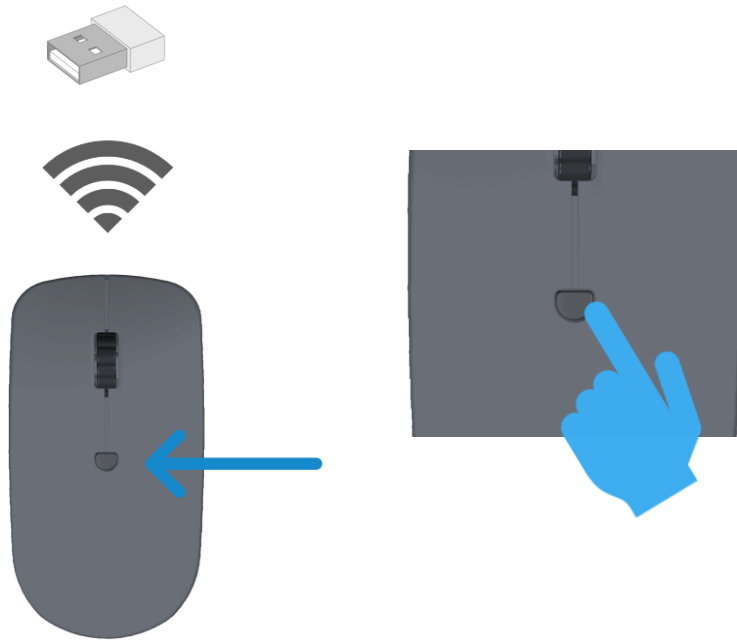


4. M1 mouse can work on most kinds of surfaces, include:

- ◆ Normal mouse pad
- ◆ Surface of the desk
- ◆ Surface of the flat glass panel\*



## 5. How to pair the M1 mouse with the RF dongle?



If there have problems with the wireless connection, you can try to pair the M1 mouse with the RF dongle again.

- ① Press the DPI change key for 3 seconds
- ② DPI change key will blink
- ③ When the DPI change key stop blink, it indicate the pairing successful.
- ④ The mouse can work properly.



## 6. How to pair the keyboard with RF dongle of the set of keyboard and mouse?



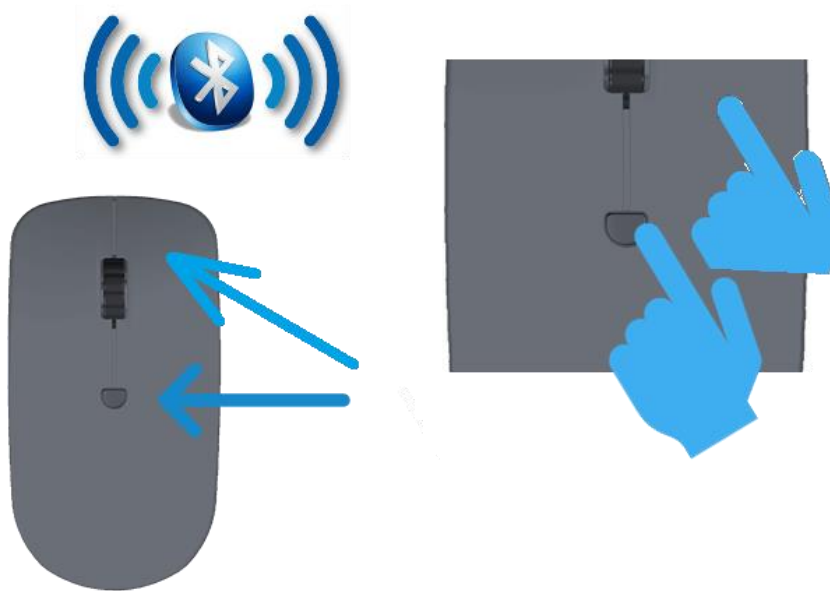
- ① Put the C/E/M/DS series keyboard of Double Shell close to the dongle of the mouse;
- ② Press Fn+1 of the keyboard for 3 seconds
- ③ When the indicator light stop blinks, the pairing is successful.
- ④ The set of the mouse and keyboard can work properly

#note: E68 and M69 please press Fn+Z for 3 seconds.





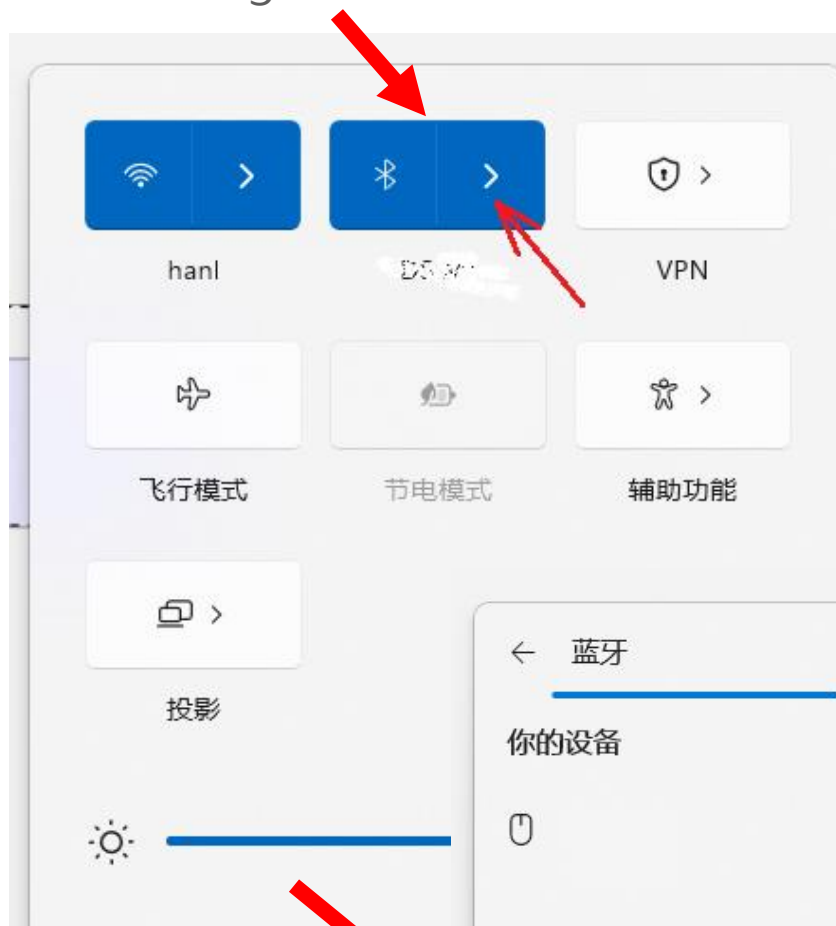
## 7. How to pair the mouse with the computer by Bluetooth?



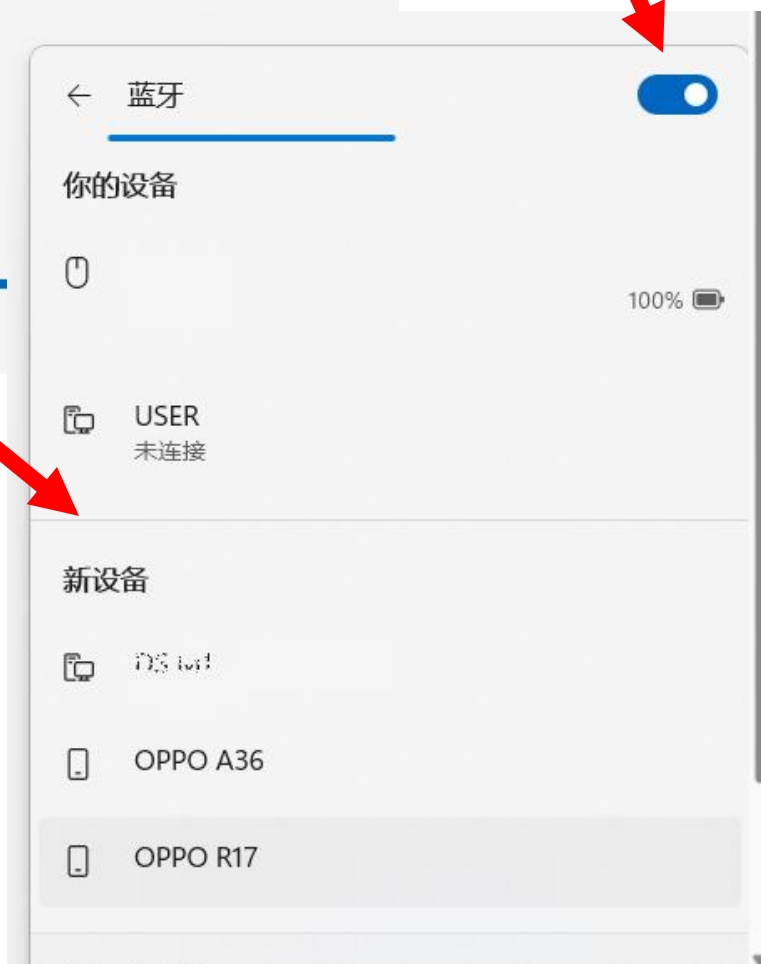
- a. At the computer, use the wire mouse to click the wireless symbol in the taskbar,



b. and then click the ">" on the right of the Bluetooth.



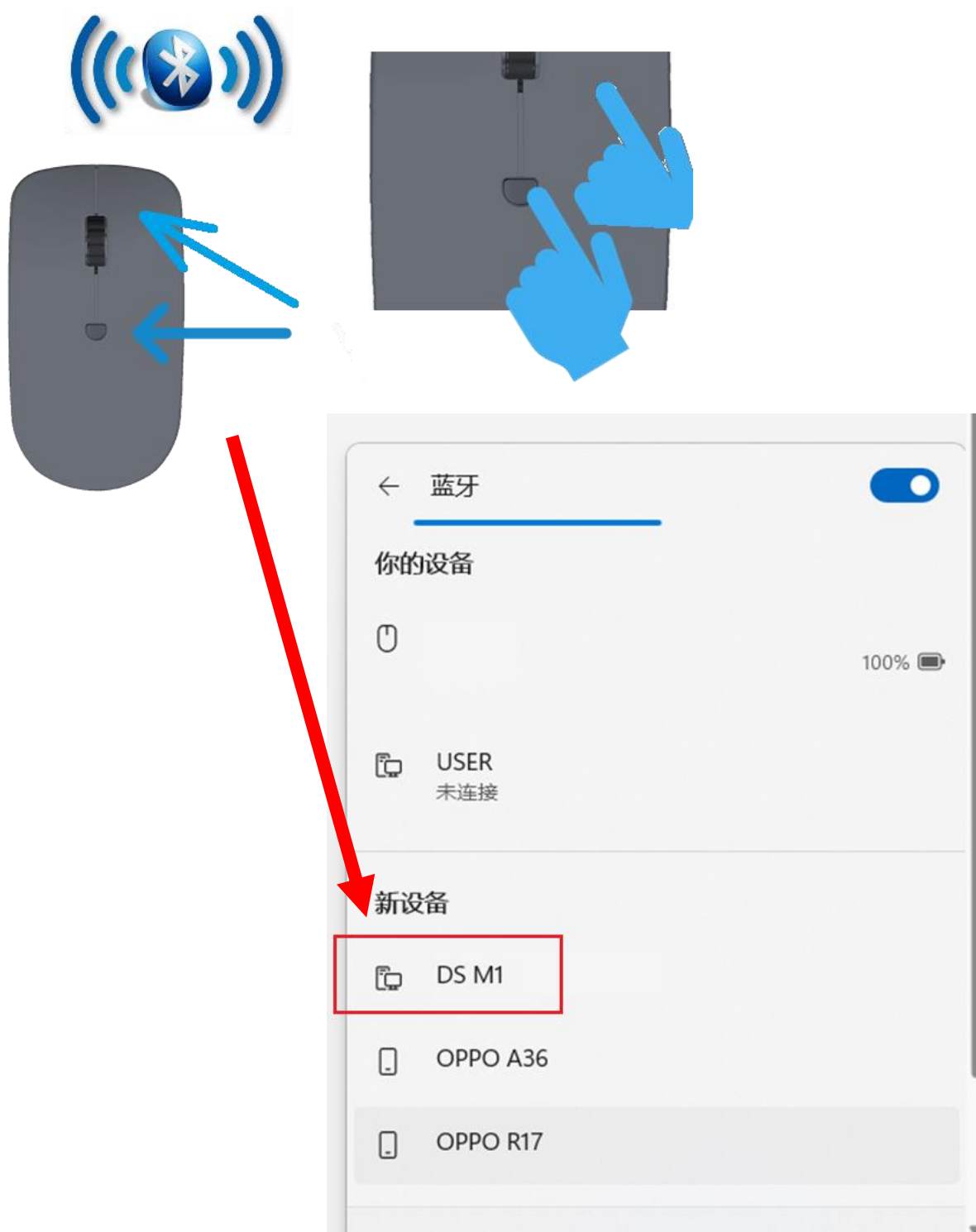
Make sure to turn on the Bluetooth



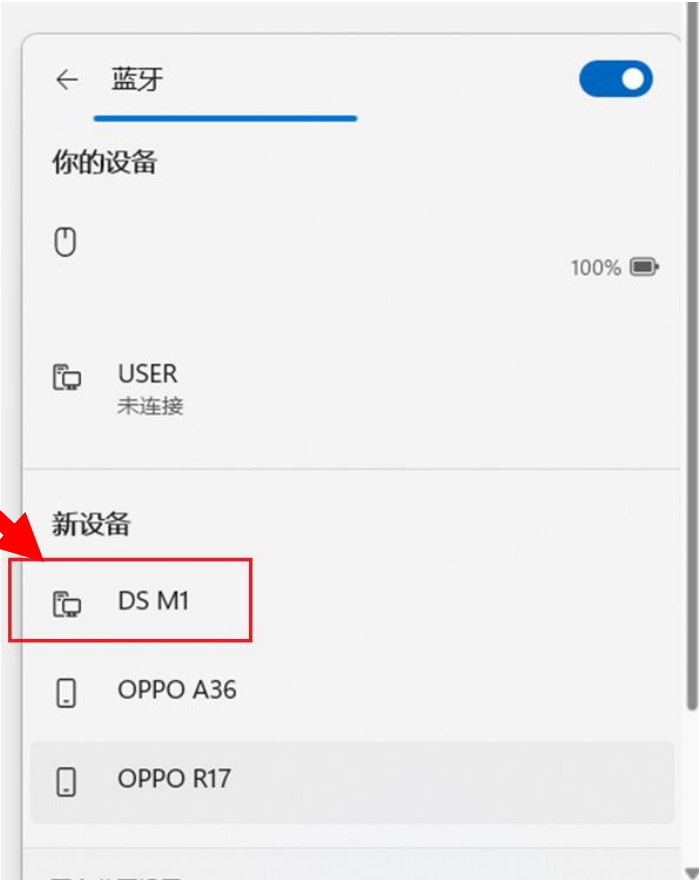
There will show the device list like the shown.



c. Press the DPI change key and right key of the DS-M1 at the same time, there will show "DS M1" on the new device list.



d. Use the wire mouse to right click the "DS M1" on the new device list, the light on the DPI change key will blink, when it stop blink, move the M1 mouse, then the M1 mouse successfully connected with the computer by Bluetooth.



The DS M1 will show on "your device list" like the picture.

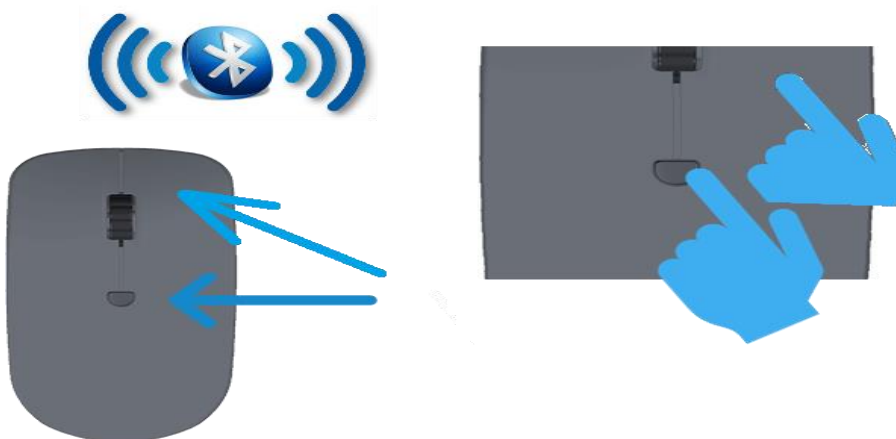


## 8. How to switch the M1 mouse between RF and Bluetooth?

Press the DPI change key and Left key at the same time, the mouse will change to RF mode.



Press the DPI change key and right key at the same time, the mouse will change to bluetooth mode.



# FCC warning

This device complies with part 15 of the FCC Rules. Operation is subject to the following two conditions: (1) this device may not cause harmful interference, and (2) this device must accept any interference received, including interference that may cause undesired operation.

Any changes or modifications not expressly approved by the party responsible for compliance could void the user's authority to operate the equipment.

NOTE: This equipment has been tested and found to comply with the limits for a Class B digital device, pursuant to Part 15 of the FCC Rules. These limits are designed to provide reasonable protection against harmful interference in a residential installation. This equipment generates, uses and can radiate radio frequency energy and, if not installed and used in accordance with the instructions, may cause harmful interference to radio communications. However, there is no guarantee that interference will not occur in a particular installation.

If this equipment does cause harmful interference to radio or television reception,

which can be determined by turning the equipment off and on, the user is encouraged to try to correct the interference by one or more of the following measures:

- Reorient or relocate the receiving antenna.
- Increase the separation between the equipment and receiver.
- Connect the equipment into an outlet on a circuit different from that to which the receiver is connected.
- Consult the dealer or an experienced radio/TV technician for help.

The device has been evaluated to meet general RF exposure requirement. The device can be used in portable exposure condition without restriction