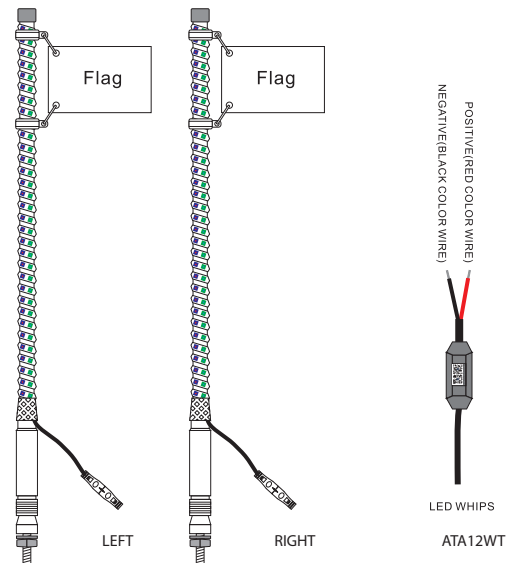


LED WHIPS INSTALLATION MANUAL

PARAMETER



Model#	LED WHIPS	Function
ATA12WT	1	APP+Bluetooth +Remote Control

DOWNLOAD APP SOFTWARE

please search BT-light in major app centers, or scan below QR code



google-Android



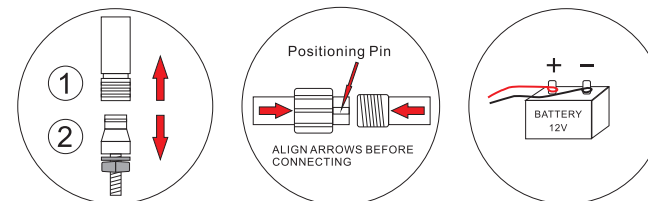
IOS

1. Download the "BT-Light" APP with your mobile phones by scanning the QR code on user manual or search the "BT-Light" APP in iPhone APP store or Google play store.
 2. After the APP are downloaded successfully, you need to turn on Bluetooth function on your phone firstly, then plug in the strip light, then open the APP, your APP will pair with the strip light automatically and you can control it.
- ☆ Android phones need to open the location function and allow permission

Unable to Connect Troubleshooting

- (1) Check if the power supply of the light strip is normal.
- (2) Check if the Bluetooth is turned on.
- (3) Check if there are other mobile phones connected, Bluetooth 4.0 only supports connections one to many, does not support many to many.
- (4) Check APP Bluetooth setting if the phone is connected to the device, if connected, exit the APP and reopen, the APP will go to connect automatically.
- (5) Normal operations and cannot connect, please exit the APP and reopen.
- (6) Exit APP, restart mobile phone, power on the strip light, reopen the APP, then they will connect automatically.

INSTALLATION STEPS

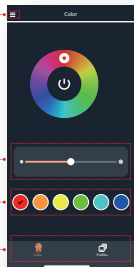


Click the menu icon,
enter the "setting" interface

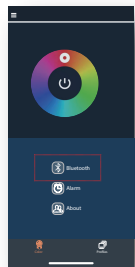
Dimming: adjust the
brightness

Preferred color

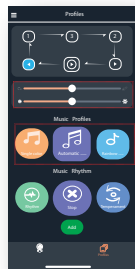
function navigation



"BT connect"

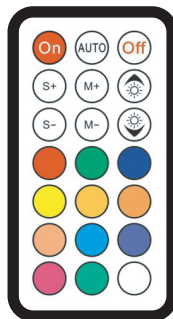


Then, enter
"BT connect"



speed
brightness
mode

REMOT



On:Power on
Off:Power off
Auto:Auto Play Modes
S+:Speed+
S-:Speed-
M+:Mode+
M-:Mode-
☀:Brightness+
🌙:Brightness-

FCC Statement

This equipment has been tested and found to comply with the limits for a Class B digital device, pursuant to part 15 of the FCC Rules. These limits are designed to provide reasonable protection against harmful interference in a residential installation. This equipment generates, uses and can radiate radio frequency energy and, if not installed and used in accordance with the instructions, may cause harmful interference to radio communications. However, there is no guarantee that interference will not occur in a particular installation. If this equipment does cause harmful interference to radio or television reception, which can be determined by turning the equipment off and on, the user is encouraged to try to correct the interference by one or more of the following measures:

- Reorient or relocate the receiving antenna.
 - Increase the separation between the equipment and receiver.
 - Connect the equipment into an outlet on a circuit different from that to which the receiver is connected.
 - Consult the dealer or an experienced radio/TV technician for help.
- Caution: Any changes or modifications to this device not explicitly approved by manufacturer could void your authority to operate this equipment.

This device complies with part 15 of the FCC Rules. Operation is subject to the following two conditions: (1) This device may not cause harmful interference, and (2) this device must accept any interference received, including interference that may cause undesired operation.

RF Exposure Information

This equipment complies with FCC radiation exposure limits set forth for an uncontrolled environment. This equipment should be installed and operated with minimum distance 20cm between the radiator and your body.

1.Click the menu icon, enter the "setting" interface

2.enter"BT connect"

☆The APP function introduction is shown in the figure above.

Manufacturer/Hersteller: Brighttech Lighting Inc.
50 COMMERCIAL ST PLAINVIEW NY 11803
www.brighttechlife.com
+1 516-737-4095
Made in China

