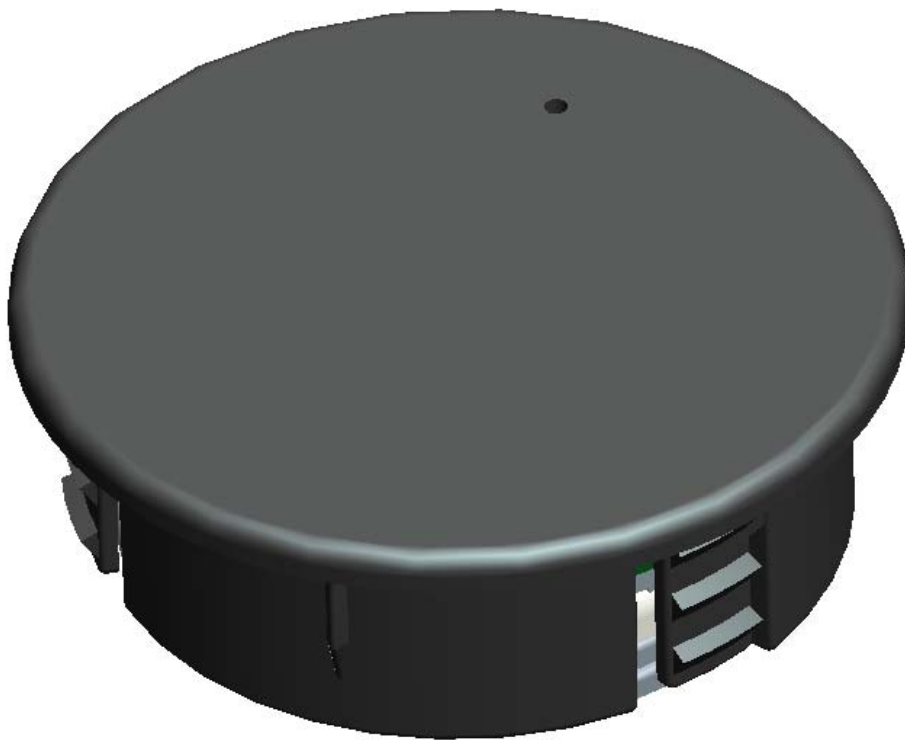




Shenzhen VST Lighting Co.,Ltd.

Product model: TS14

Product name: 2.4GHz (2407-2478MHz) wireless remote control



## TS14 Operating instruction

Thank you for purchasing our products. In order to use this product safely and conveniently, please read the instructions carefully before use. Please keep this specification for future review.

Address: No.17, Century Industrial Zone, Hutian Rd., Pinghu Town, Longgang District, Shenzhen City, P.R.C.

Telephone: (86) 755-28855166

Fax: (86) 755-22642779

Website address: [Http://www.vstled.com](http://www.vstled.com)

## **A: Product overview**

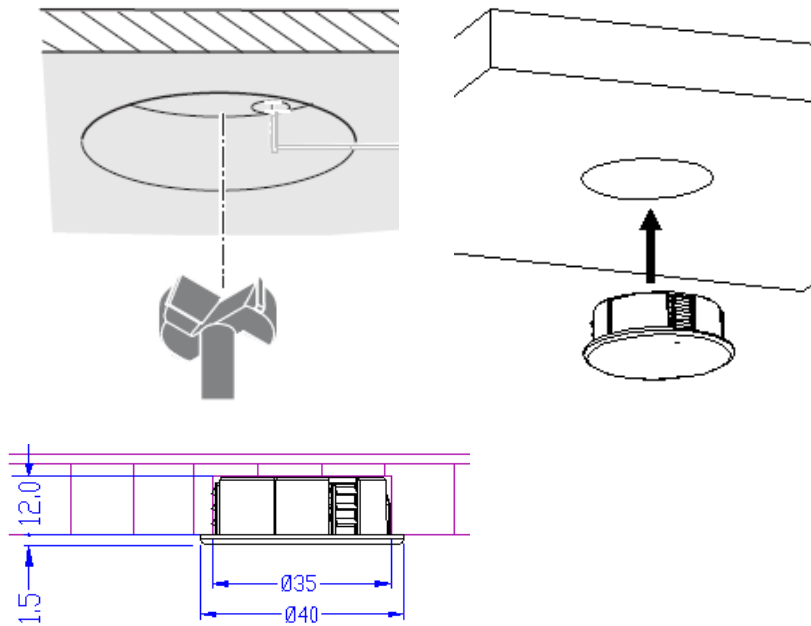
1. TS14 remote control is a high-performance wireless remote control, using 2.4GHz (2407-2478MHz) high-frequency wireless remote control, with the characteristics of low power consumption, long transmission distance, strong anti-interference ability, high air communication rate.
2. TS14 remote control does not need additional wiring installation, simple and convenient, installation and use safe and stable.
3. TS14 remote control product is a single key touch design, can realize the long-distance wireless control of lamps, can control the switch and brightness adjustment of lamps, suitable for different scenarios.

## **B: Product performance specifications**

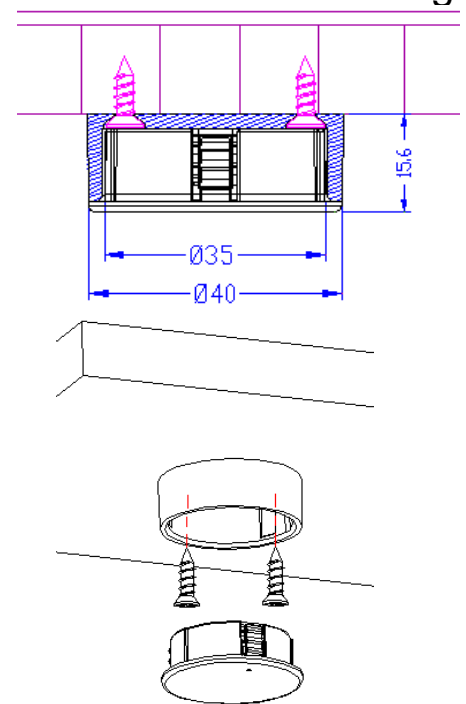
1. Thin and light, small  $\Phi 40 \times 13.5\text{mm}$
2. Light weight of 10g (excluding battery)
3. Easy installation: There are two ways to install products: embedded type and surface installation seat type
4. Function: Touch-sensing wireless transmission to realize the switching and dimming of lamps
5. Antenna carrier frequency: 2.4GHz (2407-2478MHz)
6. Antenna type: built-in whip antenna
7. Transmission distance: 60m (open space)
8. Battery model: button cell CR3032
9. Battery capacity: 3V 550mAh
10. Standby current: 10uA
11. Operating current (instantaneous emission signal current): 500uA
12. Battery life: 3,500 times.
13. Operating ambient temperature: 0°C to + 55°C
14. Operating environment humidity: 20% to 70% R.H.
15. Storage temperature: -40°C to + 55°C
16. Storage humidity: 0% to 70% R.H

## C: Product installation

### 1. Embedded installation



### 2. Surface mounting



## D: Battery installation and replacement

Take out the remote control, rotate according to the logo of the shell and open the shell, remove the CR3032 button battery, and put the new CR3032 button battery into the battery compartment. Pay attention to the positive and negative polarity of the battery, not reverse. Then, cover with the bottom cover.

1.



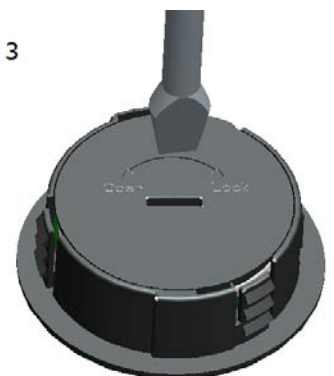
Unscrew the remote control battery cover as shown in the figure

2



Install the button battery into the remote control

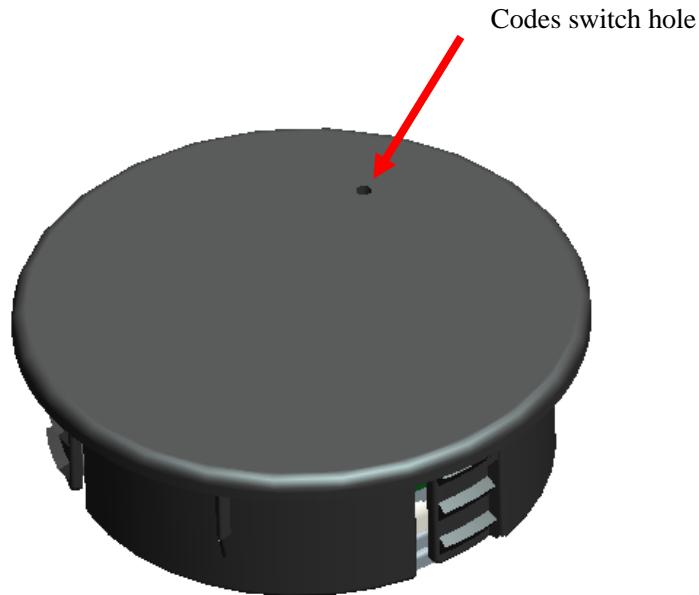
3



Tighten the battery cover clockwise as shown

## E: Operation declaration

### 1: Diagrammatic sketch operation of TS14 remote control panel



### 2: To code

The remote control needs to be coded with the LED lamp before use.

The method is as follows: install the LED lamp, turn the power on, light the LED lamp, indicating that the LED lamp is working normally, press the code switch with the equipped code needle within 8 seconds, the lamp flashes three times, indicating the success of the code.

### 3: Switch/dimming operation

After the code is successful, you can control the lamp with the remote control. Click the remote control panel, the lamp is on, click is off again, to cycle. When you need to dimmer, keep the finger on the remote control panel, you can adjust the light from light to light, to achieve the appropriate brightness, let go of the finger.

### 4. Clear code

Select the lamp to clear the code, first cut off the receiver, and then press the remote control code with the equipped code pin, The switch is not put, connect the receiver, the lamp flashes six times, confirm the code clearance.

## F: Product warranty description

1. Under normal use conditions, the warranty period of the product is 2 years from the factory mark date. During the warranty period, the quality problem detected by the company will be free of charge.
2. The following circumstances are not covered by the warranty
  - (1) Failing to install according to the instructions, and being damaged by use;
  - (2) Users are damaged by removing the internal components by themselves;
  - (3) Water intake in the box
  - (4) The product shell is seriously damaged and deformed
  - (5) The product body date is erased or altered

## Warning:

- (1) Do not charge the battery. Charging the battery can cause the battery electrolyte to boil or increase the pressure inside the battery. Because of this, the battery can leak, heat, explode or catch fire.
- (2) Stay away from the children. If a child eats it, please consult your doctor immediately.
- (3) In case of the battery electrolyte into the eye, immediately rinse the eyes thoroughly with water and consult the doctor.
- (4) In case of the battery electrolyte entrance, rinse adequately and consult the doctor immediately.
- (5) Do not heat or throw into the fire, water for treatment. Do not change or decompose the battery. Doing so may destroy the sealant ring, resulting in fire, heat, leakage or explosion.
- (6) Do not let the positive (+) and negative (-) ends short circuit. Stay away from metal or other conductive materials. Mix the battery with metal or other conductive material to directly contact the positive (+) and negative (-) ends can short circuit the battery.
- (7) When the battery is to be stored or processed, isolate the positive (+) and negative (-) ends of the battery to prevent these terminals from making contact with each other.
- (8) Embed the battery in the correct direction of positive (+) and negative (-) end.

## Guard:

- (1) Do not put the battery in the microwave or dryer.
- (2) Do not fall off and use excessively damaged or deformed batteries.
- (3) Do not mix with new or different batteries.
- (4) Do not store the battery in high temperature and high humidity places or exposed to sunlight, in order to prevent the battery performance degradation, expansion or leakage.

## FCC Caution:

Any Changes or modifications not expressly approved by the party responsible for compliance could void the user's authority to operate the equipment.

This device complies with part 15 of the FCC Rules. Operation is subject to the following two conditions: (1) This device may not cause harmful interference, and (2) this device must accept any interference received, including interference that may cause undesired operation.

### FCC Radiation Exposure Statement:

This equipment complies with FCC radiation exposure limits set forth for an uncontrolled environment. This equipment should be installed and operated with minimum distance 20cm between the radiator & your body.

NOTE: This equipment has been tested and found to comply with the limits for a Class B digital device, pursuant to part 15 of the FCC Rules. These limits are designed to provide reasonable protection against harmful interference in a residential installation. This equipment generates, uses and can radiate radio frequency energy and, if not installed and used in accordance with the instructions, may cause harmful interference to radio communications. However, there is no guarantee that interference will not occur in a particular installation. If this equipment does cause harmful interference to radio or television reception, which can be determined by turning the equipment off and on, the user is encouraged to try to correct the interference by one or more of the following measures:

- Reorient or relocate the receiving antenna.
- Increase the separation between the equipment and receiver.
- Connect the equipment into an outlet on a circuit different from that to which the receiver is connected.
- Consult the dealer or an experienced radio/TV technician for help.