

Visual Aquarium Feeder

user manual

Catalogue

Attention	1
Safety instructions	1
Accessory list	2
Product introduction	3
Installation guide	4-6
App Guide	7-8
FAQ	9
Parameter	10
Name and content of toxic and harmful substances in the product	10
after-sale service	10

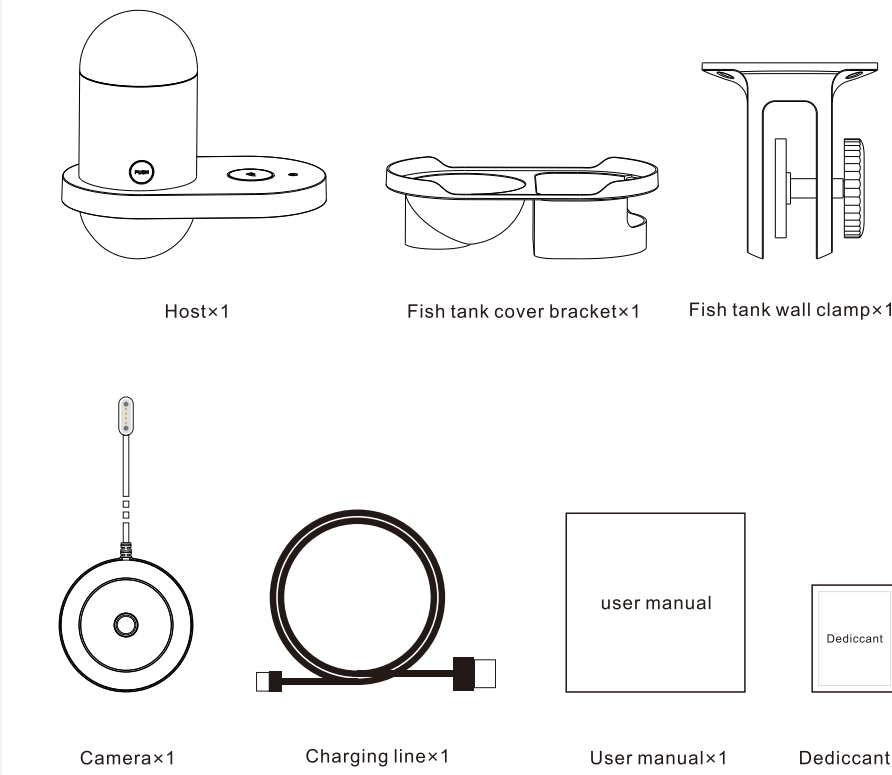
Attention

- Please read this user manual carefully before use. Once installed or used, it means that you have carefully read and accepted the following safety instructions.
- The company will not be responsible for any accident and loss caused by illegal operation and will not bear any legal liability.
- The company reserves the right to interpret and modify this statement.

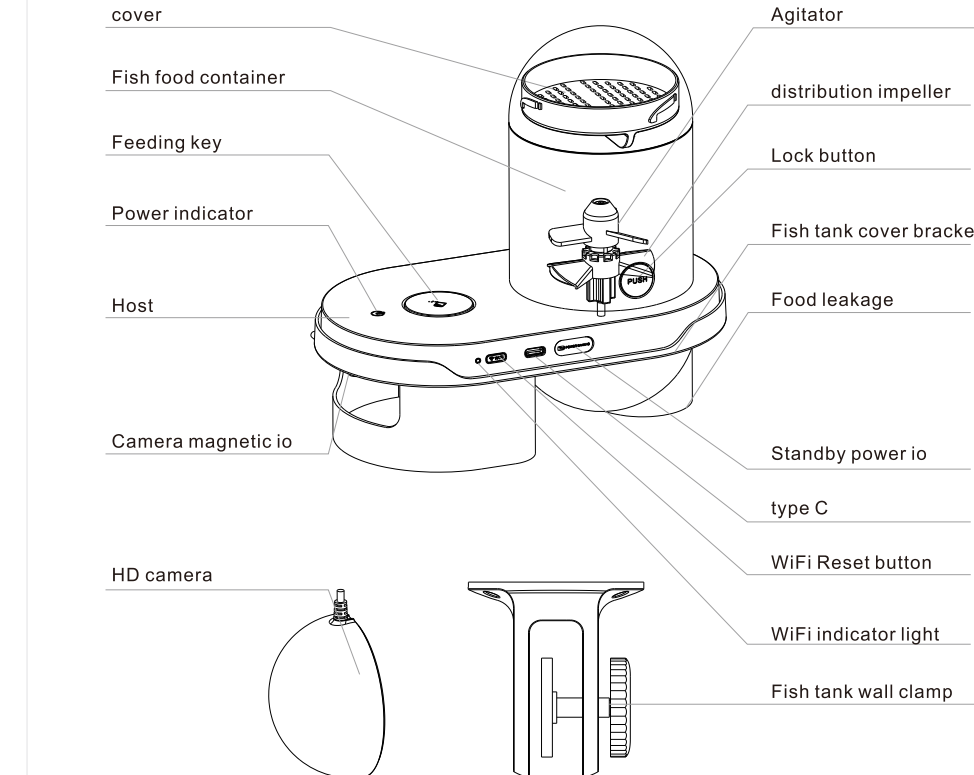
Safety instructions

- Failure to comply with the following terms may result in the product not being used normally or other accidental damage.
- Please install and use the equipment in strict accordance with the instructions.
- Please use the equipment indoors.
- Please use the original charging cable, otherwise it will damage the equipment or cause the equipment to work abnormally.
- Keep it horizontal and do not overturn the equipment, otherwise the equipment will not work properly.
- Do not drop fish food or other items other than the applicable fish food into the fish food container, otherwise it will cause abnormal use of the equipment and even cause safety problems for the fish.
- The product is not allowed to soak or soak in water.
- During installation, please use 2 kinds of installation accessories provided by the equipment. Do not use other methods to fix, otherwise the equipment may be damaged.
- If children use this device, please make sure to use it under the guidance of an adult.
- Other than maintenance personnel, no one is allowed to repair this product to avoid various accidental injuries.
- This equipment is not recommended for meat eating fish.
- Do not touch the outlet when delivering fish food.
- Please contact the customer service personnel in case of product use problems.

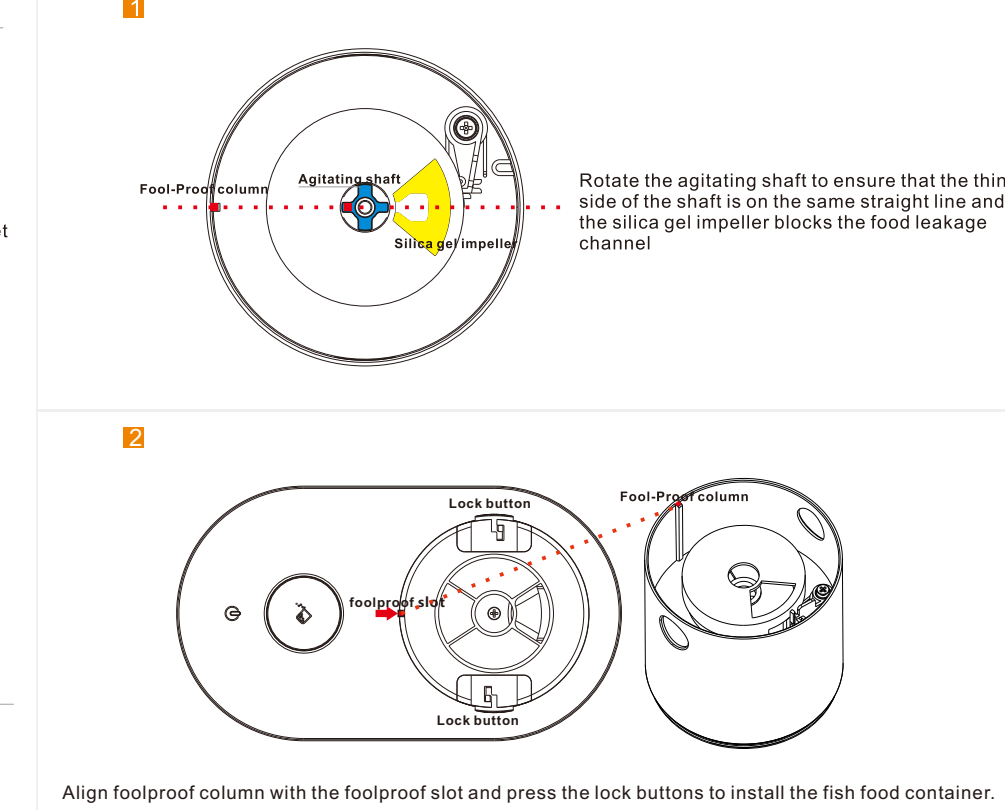
Accessory list



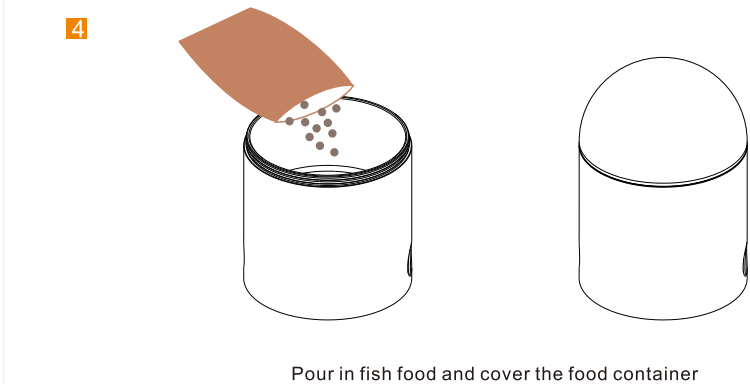
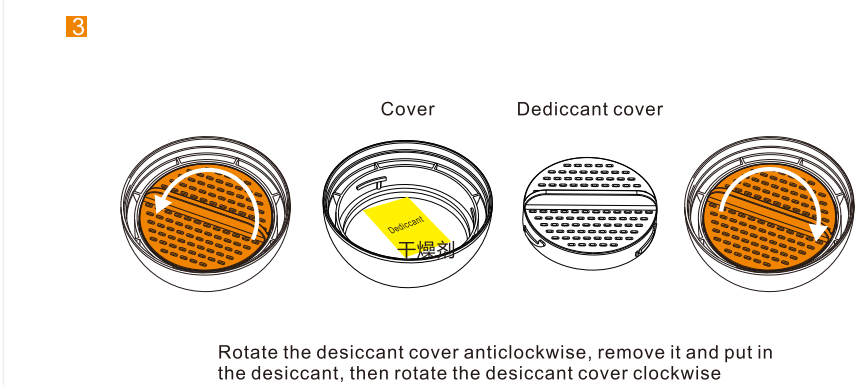
Product introduction



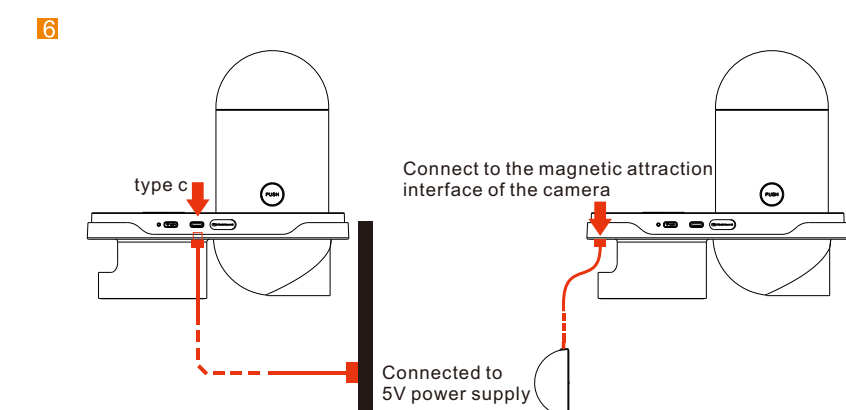
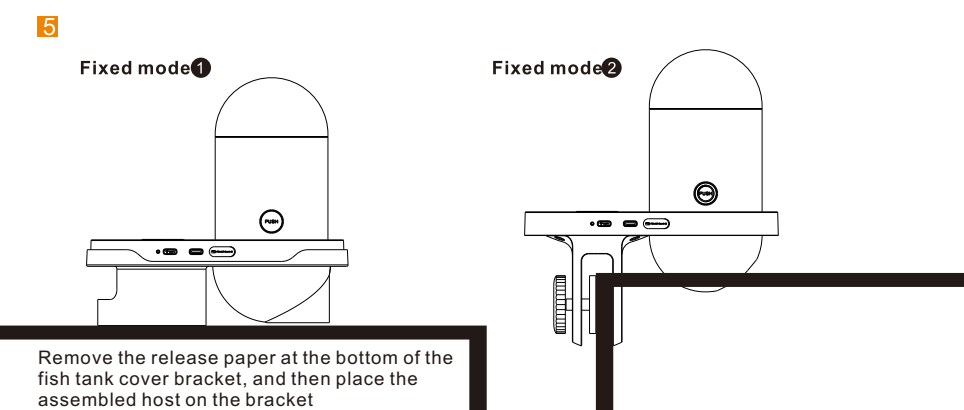
Installation guide



Installation guide



Installation guide

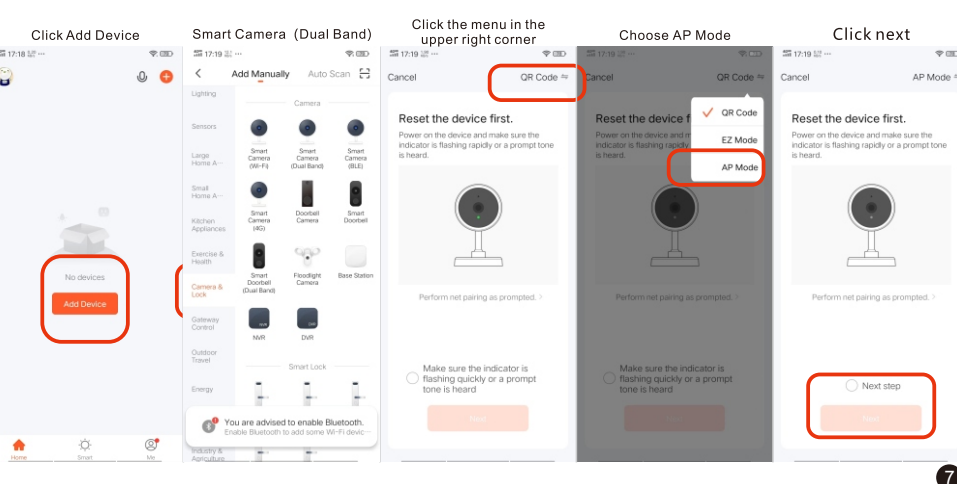


APP guide

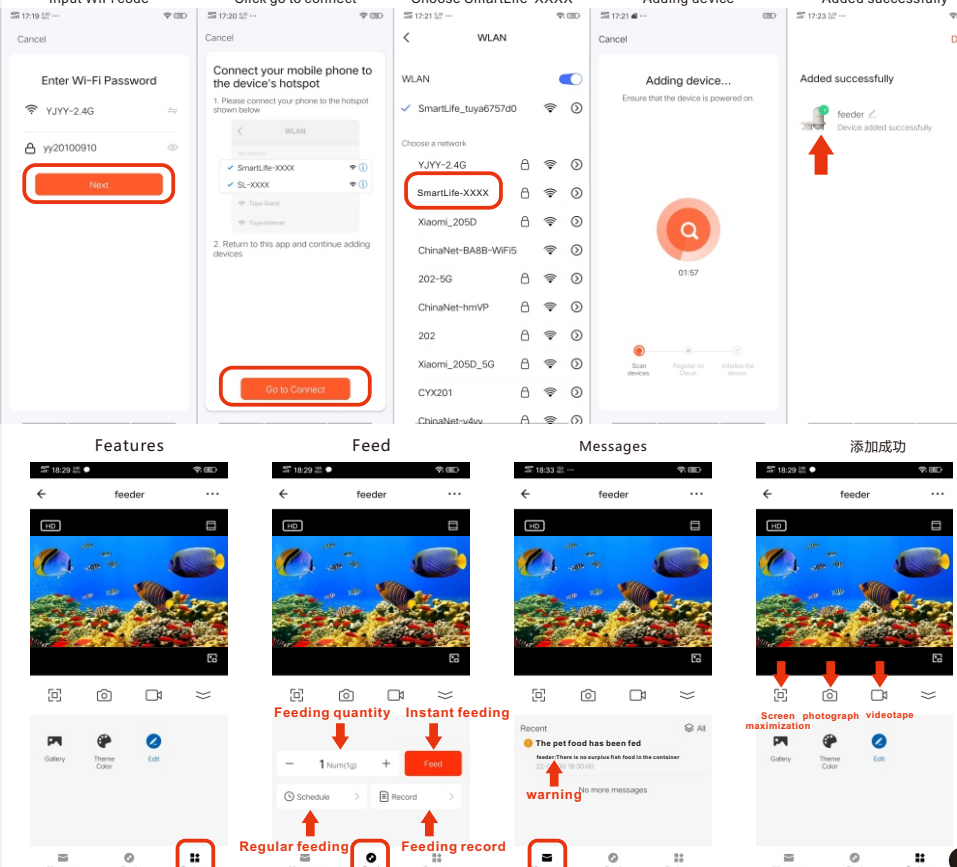
Scan, download and install tuya app



Introduction to WiFi / APP connection



APP guide



FAQ

- food container cannot be installed**
Align foolproof column with the foolproof slot and press the lock buttons to install the fish food container.
- WiFi cannot be connected**
If other users connect to WiFi first, WiFi may not be connected. Press the WiFi reset button for 3 seconds and then reconnect to WiFi. It is also possible that the magnetic io is not connected, and the WiFi indicator light will be red. You can reinstall the magnetic connector before connecting to WiFi.
- How to clean the food container**
Press and hold the lock button to remove the food container. Rotate counterclockwise to remove the cover of the grain distribution tank at the bottom of the grain barrel. The real grain barrel can be washed with water.
- What about a sudden power failure**
Connect the standby power io (such as power bank) to the standby io. In case of sudden power failure, the system will switch to the standby power supply mode.
- Misuse of fish food or other items outside the scope of this product, resulting in food jam**
After removing the food container, unscrew the lid of the distribution tank, take out the stuck items and reinstall them for use.
- Do not know how to install this product**
There are two fix methods: fish tank wall and fish tank cover. Please select the most suitable way before use.
- APP Video too laggy**
Ensure that the network speed of the router is fast enough. If the network speed is low, please adjust the video definition from "HD" to "standard definition".

Parameter

Model	O-one	Input	5V---2A
Environment	Home and office fish tanks	Capacity	200ml
Size	200×100×200mm	Resolution	2K HD(night vision)
Temperature	-10-45°C	Interface	Type C
Material	Food grade ABS	Color	Elegant white
Fish Food	Diameter0.3-5mm (Round, faky and columnar fish food)		

Name and content of toxic and harmful substances in the product

Part name	Name and content of toxic and harmful substances in the product					
	Pb	Hg	Cd	Cr(VI)	PBB	PBDE
Plastic	○	○	○	○	○	○
Hardware	○	○	○	○	○	○
PCBA	×	○	×	○	○	○
Charging line	×	○	○	○	○	○
Accessory	○	○	○	○	○	○

This form is prepared in accordance with SJ / T11364
 ○ Indicates that the content of the hazardous substance in all homogeneous materials of the component is below the limit specified in GB / T26572
 × Indicates that the content of the hazardous substance in at least one homogeneous material of the component exceeds the limit specified in GB / T26572

warranty

User information: name: Tel: Address: merchant: Tel:



FCC Warning

This device complies with part 15 of the FCC rules. Operation is subject to the following two conditions: (1) this device may not cause harmful interference, and (2) this device must accept any interference received, including interference that may cause undesired operation.

Changes or modifications not expressly approved by the party responsible for compliance could void the user's authority to operate the equipment.

NOTE: This equipment has been tested and found to comply with the limits for a Class B digital device, pursuant to part 15 of the FCC Rules. These limits are designed to provide reasonable protection against harmful interference in a residential installation. This equipment generates uses and can radiate radio frequency energy and, if not installed and used in accordance with the instructions, may cause harmful interference to radio communications. However, there is no guarantee that interference will not occur in a particular installation. If this equipment does cause harmful interference to radio or television reception, which can be determined by turning the equipment off and on, the user is encouraged to try to correct the interference by one or more of the following measures:

- Reorient or relocate the receiving antenna.
- Increase the separation between the equipment and receiver.
- Connect the equipment into an outlet on a circuit different from that to which the receiver is connected.
- Consult the dealer or an experienced radio/TV technician for help.

Radiation Exposure Statement

This equipment complies with FCC radiation exposure limits set forth for an uncontrolled environment. This equipment should be installed and operated with minimum distance 20cm between the radiator and your body.