



X10

Manual

1. Package and Product Parameters

Package Contents:

imoo X10	1	Charging Cable	1
Manual	1	SIM Card Picker	1

Product Parameters:

Product: Watch Phone

Model: W2432AO

Battery: Lithium Polymer Battery Pack 3.87V 740mAh

Cameras: Front Camera 5MP, Rear Camera 8MP

Charge Input: DC 5V 2000mA

Working Temperature: 0°C~35°C

Working Humidity: Noncondensable 15%~93%

Network Frequency Bands:

2G GSM	B2/B3/B5/B8
3G WCDMA	B1/B2/B4/B5/B8
4G FDD-LTE	B1/B2/B3/B4/B5/B8/B12/B13/B17/B18/B19/B20/B26/B28/B66
4G TD-LTE	B38/B40/B41

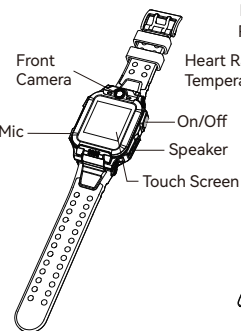
Material Code: 5211883 Version: V1.0

2. Radio Waves Specifications

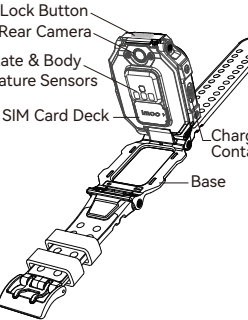
Rated Output Power	2G GSM :B2/B3 (30dBm±2dB) 2G GSM :B5/B8 (33dBm±2dB) 3G WCDMA :B1/B2/B4/B5/B8 (23dBm±2.7dB) 4G FDD-LTE :B1/B2/B3/B4/B5/B8/B12/B13/B17/B18/B19/B20/B26/B28/B66(23dBm±2.7dB) 4G TD-LTE :B38/B40/B41 (23dBm±2.7dB) Bluetooth: 5dBm(EIRP) WiFi 2.4GHz: 10dBm(EIRP) 5G WiFi: 5.15-5.25GHz: 5dBm(EIRP); 5.25-5.35GHz: 5dBm(EIRP); 5.47-5.725GHz: 5dBm(EIRP); 5.725-5.85GHz: 4dBm(EIRP)
--------------------	---

3. Device Layout

Watch Face:



Watch Back:

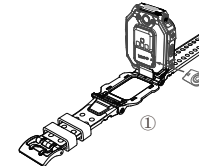


4. Choose and Install SIM Card

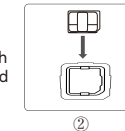
Step 1: Choose the Right SIM Card

The size of the SIM Card: Standard Nano SIM card only [as shown in (1)].
Data plan: Please enable "Caller ID" function and enable GPRS data network. Watch phone can access either 2G/3G/4G network data.

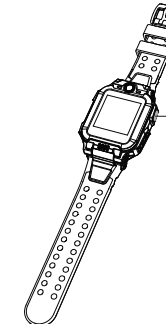
Step 2: Install the SIM Card



2. Place the Nano SIM card on the card deck with the gold chip facing up and insert the SIM card deck into the back of the watch.



5. Power On



Power On: Press the On/Off button for 6 seconds to power on the watch.

1. If the new watch does not turn on, it is probably without power. Please connect the charging cable until the watch turns on automatically.
2. For general abnormal conditions (e.g. blank screen), press and hold the On/Off button for 12 seconds to restart the watch.

6. Download the App & Bind the Watch

Step 1: Download/Install the App

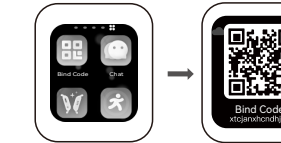
1. Scan the QR code shown to the right; or
2. Go to Google Play or Apple App Store and search for "imoo Watch Phone", "imoo" or "Watch Phone" to download and install the app.



Step 2: Bind the Watch

1. Open the app, register or log in.
2. Slide the watch interface to find 'Bind Code' and scan the QR code or enter the bind code manually to bind the watch.

Get the Bind Code:

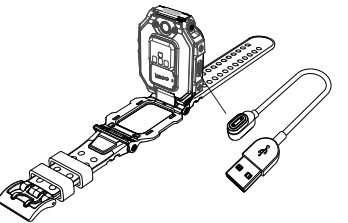


Tap Bind Code in the More screen to get the bind code; or
Scan the QR code or enter the bind code manually.

7. Charge

The watch is equipped with magnetic charging contacts. Please align the charging contacts on the watch with the contacts on the charging cable until "Charging" is displayed on the watch screen.

*Please use a CE certified power adapter when connecting the charging cable to charge the watch.



8. OTA Upgrade

Check the watch's firmware version on the imoo app and turn on "Auto Update". The watch will then automatically download the software updates and complete the upgrade when it is charged and connected to the network.

*Note: There may be security risks with informal root or system upgrades. The watch's operating system supports only official software updates. If the user performs an unofficial root or system upgrade, any security risks or losses resulting therefrom should be borne by the user (possible risks include, but are not limited to theft of the user's personal data).



9. Basic Operation

1. Turn on the screen: Tap the screen or press the On/Off button.
2. Turn the screen off: Press the On/Off button to turn off the screen when the Home screen is on; or cover the screen with your hand;
3. You can set the screen on time in "Display & Brightness" under "Settings" in More interface. When the time is up, the screen will turn off.



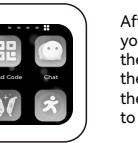
Wallpaper:
From the Home screen, long press to enter Wallpaper.
Slide left or right to view more and select one as your wallpaper.



Slide left from the Home screen to enter the "Chat", "Virtual Me", and "More" interfaces. Slide down from the Home screen to access the Control Center; Slide up from the Home screen to change the shortcut settings.



Move right from the Bind Code screen.



Return to the More interface.

After entering each feature, you can slide right to exit the feature, as shown on the left. You can also press the On/Off button to return to the Home screen.

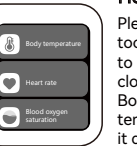
10. Basic Features



Call
Contacts sorting: "Recents" is at the top; contacts are sorted by the time they were added, with the most recently added contacts listed first. You can change the sorting by long-pressing and dragging the contact's avatar.
Select a contact to make a voice or video call. Video calls can use a lot of network data. We recommend that you make video calls when you are connected to a Wi-Fi network. If the app cannot receive the video call, check that notifications are enabled or that the call has not been blocked by the system.



Chat
Tap "Hold to Talk" to start recording a voice message, then release your finger to send it.
The watch also supports sending photos, videos and emoticons via "Chat".
Unread voice messages are displayed on the screen. You can tap them to play them.



Health
Please wear the watch appropriately, do not leave too much space between your wrist and the watch to keep the heart rate and body temperature sensors close to the skin.
Body temperature: Using a proprietary body temperature detection algorithm developed by imoo, it detects changes in your body temperature trend through 24-hour continuous monitoring of physiological data. If your body temperature exceeds 37.5°C for an extended period of time, your parents will be notified that you are likely to have a fever. Since results may be affected if you perform detection after exercise, you must wait until your heart rate returns to resting level after exercise to ensure detection accuracy. This feature is suitable for children aged 6-14, not for those suffering from bradycardia (heart rate below 60 BPM).
Heart rate: The watch is equipped with a wrist-mounted optical heart rate sensor that supports 24-hour continuous monitoring and recording of your heart rate. To prevent children from accidentally activating or playing with the optical heart rate sensor, it will normally take more than 15 seconds for the watch to display the first detection result, while subsequent heart rate data will be updated approximately every 2-5 seconds based on heart rate fluctuations. If the detection result is displayed with a horizontal line ("--"), it means that you're measuring your heart rate when you're not at rest. Please make sure you measure your heart rate when you're relatively calm, inactive and not sleeping.

And the best time to measure your heart rate is right after you wake up in the morning (before you've got out of bed) and before you start to move around.
*This product is not a medical device and the measurement results are for reference only and are not intended to be used as a basis for medical diagnosis.



Camera
Tap the watch face to take a photo. You can switch to using the rear camera by flipping the watch face up. Then slide the screen up or down to switch between using the front or rear camera.
When using the rear camera, you can manually control the distance between the rear camera and the subject.
You can slide left or right on the screen to switch between to "Videos" or "Photos".

Wi-Fi Settings
Go to "Settings">"WLAN" on the watch to make the relevant settings. Once you have bound your watch, go to imoo app > "More" > "Watch's networks" to add a network.

11. Statements

- Please read this manual carefully so that you can use this product correctly and safely.
- Please use the watch strap that is well matched to this product to avoid interfering with the watch's antenna signal. Use of other straps may result in poor call quality and locating failure.
- This product is equipped with GPS locating, which is turned off until the watch is bound. You can check the location of the watch after it has been bound and the appropriate GPS access has been granted.
- This product is not equipped with the monitoring feature.
- This manual contains important information that should be kept properly.
- For more details and information on this product, please visit <https://imoo.com/e-manual/>. Alternatively, you can scan the QR code below.



12. Attentions

Please read the following contents carefully before using this product and observe them when using it. We accept no liability for the consequences of failure to use this product correctly or to follow the relevant instructions in this product.

Precautions for the Place of Use & the Surrounding Area:

- Any wireless transmission device (including this product) may interfere with the medical device if it is not properly protected. Please also observe the regulations of the place where wireless transmission of electronic devices is prohibited.
- Pacemakers and implanted cardioverter defibrillators: Keep the distance between the watch and the device greater than 6 inches (about 16 cm) each time you turn on your watch. Do not put your watch in your pocket. Please use the watch on the opposite side of the device to reduce possible interference. If you suspect interference, turn off your watch immediately.
- Hearing aids and cochlear implants: Some wireless digital devices may interfere with some hearing aids or cochlear implants. If this type of interference occurs, please contact the manufacturer for a solution.
- For other medical devices, check with the manufacturer to confirm that the surrounding RF signals can be adequately shielded. You can also ask your doctor for information.

Cautions on Charging and Using the Battery:

- For environmental reasons, this product does not come with a power adapter. You can use the USB interface of your computer or the CE certified power adapter to charge. And the output voltage and current of the power adapter should meet the following specifications: DC output voltage: 5V; DC output current: not less than 2000mA.

Statement of Water Resistance:

- The watch is water resistant to 20 metres in accordance with ISO 22810: 2010. It can be worn for shallow water activities such as swimming in a pool, but is not suitable for diving or other activities beyond the specified depth.
- For advice on using this type of water resistant product, please visit <https://imoo.com/e-manual/>.

RF Exposure Information (SAR):

This device complies with RF specifications when weared on your wrist or at adistance of 10mm from your body. Ensure that the use of belt clips, holsters and similar accessories should not contain metallic components. Keep the device away from your body to meet the distance requirement.

SAR	1.11W/kg (Front to face 1g) 1.64W/kg (Limb worn 10g)
-----	---

FCC compliance statement

This device complies with Part 15 of the FCC Rules. Operation is subject to the following two conditions: (1) this device may not cause harmful interference, and (2) this device must accept any interference received, including interference that may cause undesired operation.

changes or modifications not expressly approved by the party responsible for compliance could void the user's authority to operate the equipment. This equipment has been tested and found to comply with the limits for a Class B digital device, pursuant to Part 15 of the FCC Rules. These limits are desianed to provide reasonable protection against harmful interference in a residential installation. This equipment generates, uses and can radiate radio frequency energy and, if not installed and used in accordance with the instructions, may cause harmful interference to radio communications. However, there is no guarantee that interference will not occur in a particular installation.

If this equipment does cause harmful interference to radio or television reception, which can be determined by turning the equipment off and on, the user is encouraged to try to correct the interference by one or more of the following measures:
--Reorient or relocate the receiving antenna.
--Increase the separation between the equipment and receiver.
-- Connect the equipment into an outlet on a circuit different from that to which the receiver is connected.
--Consult the dealer or an experienced radio/TV technician for help.

Warranty Card (The First Invoice: User Invoice)	
User's Data	User's Name: _____ Telephone: _____ Kid's Grade: _____
Warranty Data	Name of Sales or Service Center: _____ Cause of Machine Repair: _____ Handled by: _____ Telephone: _____ Handled on: _____ (DD/MM/YYYY)
Product Data	Product Model: _____ Machine No.: _____ Date of Purchase: _____ (DD/MM/YYYY) Site of Sales: _____ (Store) _____ _____ (Address)
Product Model & Machine No.: ┌ _____ ───┐ ├ _____ ───┐ ├ _____ ───┐ ├ _____ ───┐ ├ _____ ───┐ ├ _____ ───┐ ├ _____ ───┐ ├ _____ ───┐ └ _____ ───┘	

Warranty Card (The Second Invoice: Sales Invoice)	
User's Data	User's Name: _____ Telephone: _____ Kid's Grade: _____
Warranty Data	Name of Sales or Service Center: _____ Cause of Machine Repair: _____ Handled by: _____ Telephone: _____ Handled on: _____ (DD/MM/YYYY)
Product Data	Product Model: _____ Machine No.: _____ Date of Purchase: _____ (DD/MM/YYYY) Site of Sales: _____ (Store) _____ _____ (Address)
Product Model & Machine No.: ┌ _____ ───┐ ├ _____ ───┐ ├ _____ ───┐ ├ _____ ───┐ ├ _____ ───┐ ├ _____ ───┐ ├ _____ ───┐ ├ _____ ───┐ └ _____ ───┘	



The image shown is for illustration purpose only.
Important: Information stated is important for successful application and understanding the product.
We recommend you to keep this guide for future reference.

