



Golf Cart Underglow Kit Installation Diagram

We are striving to build an reliable brand of golf carts parts and accessories.

Hope this manual can assist you to easier install.

For more technical support, please reach us via

Website : www.10LOL.com

Email : sale_service@10LOL.com

Facebook : zhong zaiyang

Youtube : 10LOL

Contents	Qty	Installation Tools	Qty
Underglow LED Light Strip.....	2	14mm Wrench.....	1
Control Box.....	1		
Cable Ties.....	15		
Screws.....	2		
Remotes Control.....	1		
Manual.....	1		

See Figure 1



Installation Tools



14mm Wrench

Installation Steps

1. Find the right place Wipe off the dust.

See figure 1



2. Use double-sided tape to fixed the Input Control box.

See figure 2



3. As shown in illustration.

See figure 3



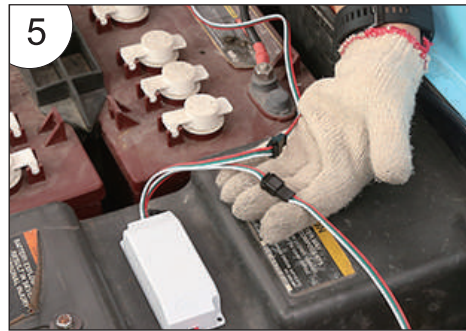
4. Connect the light wire to the Input Control box.

See figure 4



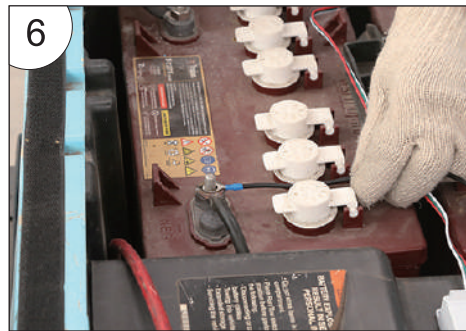
5. Connect all light strips.

See figure 5



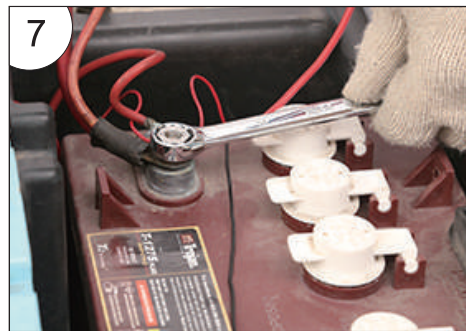
6. Connect the negative terminal of the battery (black cord).

See figure 6



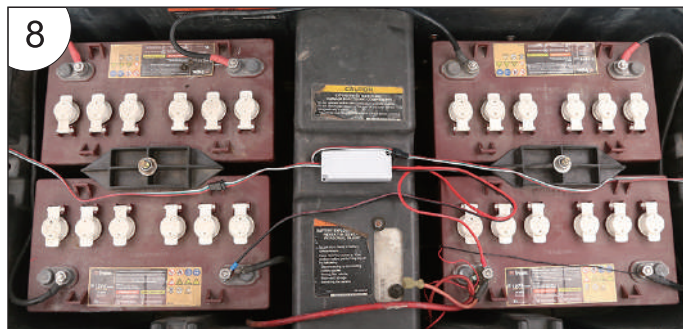
7. Connect the lamp wire, and then power on.

See figure 7



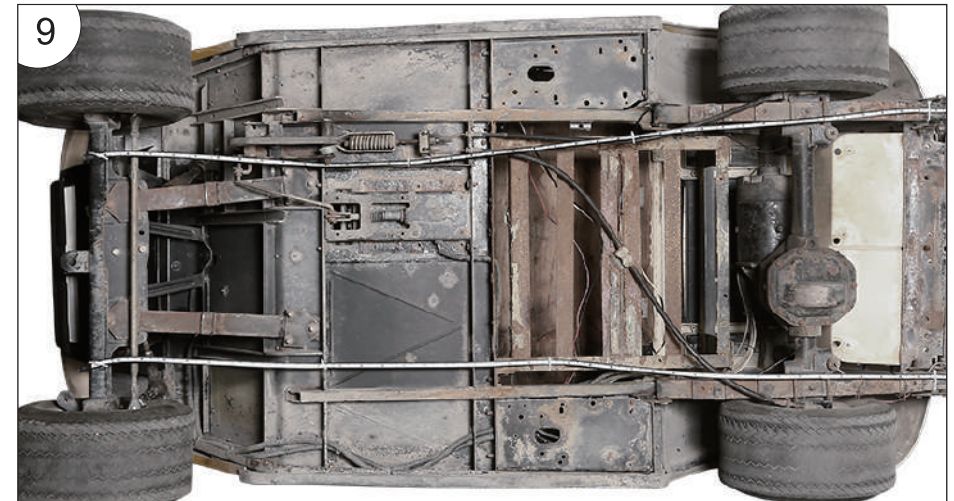
8. Power supply installation diagram .

See figure 8

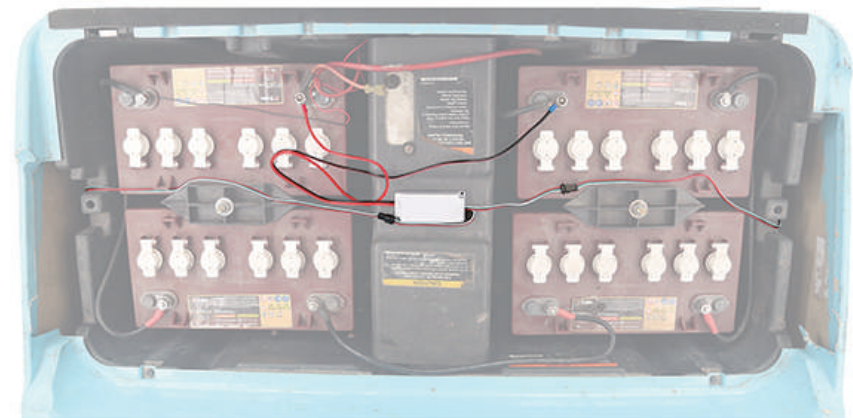
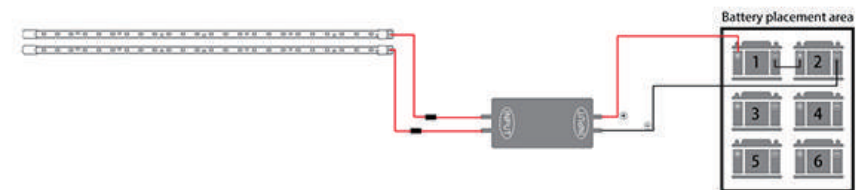


9. Light strip installation diagram.

See figure 9



Wiring Diagram of Golf Cart Ribbon Light Bar.



Fantasic Color Strip light Function

Button:

A:ON B:OFF C:Music Mode D:Switching Mode

Each time press button “A”to turn on, then press button “D”to switch modes.

14 Modes Selection:

1. Fantasic Color Flow Mode
2. Colorful Cyclic Flash Mode
3. Colorful Flow Mode
4. Fantasic Color Gradient Mode
5. Colorful Switching to Flow Mode
6. Colorfu Round Flow (Flow from two ends to the middle, then back to the ends.)
7. Red Gradient Mode
8. Blue Gradient Mode
9. Green Gradient Mode
10. Pink Gradient Mode
11. Light Blue Gradient Mode
12. Yellow Gradient Mode
13. White Gradient Mode
14. Colorful Cyclic Gradient Mode

Precautions :

1. Connect the lights and then power on to test whether it works.
It can be dangerous to power on during the installation process.
Please power on after installation.

2. Do not twist the light bar during installation to prevent the light bar from breaking or disconnection.

3. When replacing the remote control or control box, press any key on the remote control to pair the remote control and the control box within 5 seconds of power on .

Troubleshooting:

1. If the light turns off but occasionally turns on automatically
Check: Whether there is any looseness between the power cord of the control box and the battery.
2. If the light works before installation, but not after installation
Check: Whether the connection port between the lamp and the main controller is loose, is the main controller and Battery positive and negative connected.
3. When the remote control does not work
Check: Whether the remote control battery is charged. Then reconnect the control box, press any key on the remote control to re-pair within 5 seconds of power on .
4. When half of the bar lights are off or there is only one color in the seven color modes
Check: Whether the light bar is twisted or damaged, if it cannot be repaired, it should be replaced.

FCC Caution:

This device complies with part 15 of the FCC Rules. Operation is subject to the following two conditions:

(1) This device may not cause harmful interference, and (2) this device must accept any interference received, including interference that may cause undesired operation.

Any changes or modifications not expressly approved by the party responsible for compliance could void the user's authority to operate the equipment.

NOTE: This equipment has been tested and found to comply with the limits for a Class B digital device, pursuant to Part 15 of the FCC Rules. These limits are designed to provide reasonable protection against harmful interference in a residential installation. This equipment generates, uses and can radiate radio frequency energy and, if not installed and used in accordance with the instructions, may cause harmful interference to radio communications. However, there is no guarantee that interference will not occur in a particular installation.

If this equipment does cause harmful interference to radio or television reception, which can be determined by turning the equipment off and on, the user is encouraged to try to correct the interference by one or more of the following measures:

- Reorient or relocate the receiving antenna.
- Increase the separation between the equipment and receiver.
- Connect the equipment into an outlet on a circuit different from that to which the receiver is connected.
- Consult the dealer or an experienced radio/TV technician for help.

The device has been evaluated to meet general RF exposure requirement. The device can be used in portable exposure condition without restriction.

FCC ID: 2A6PN-A02-F79-B12