

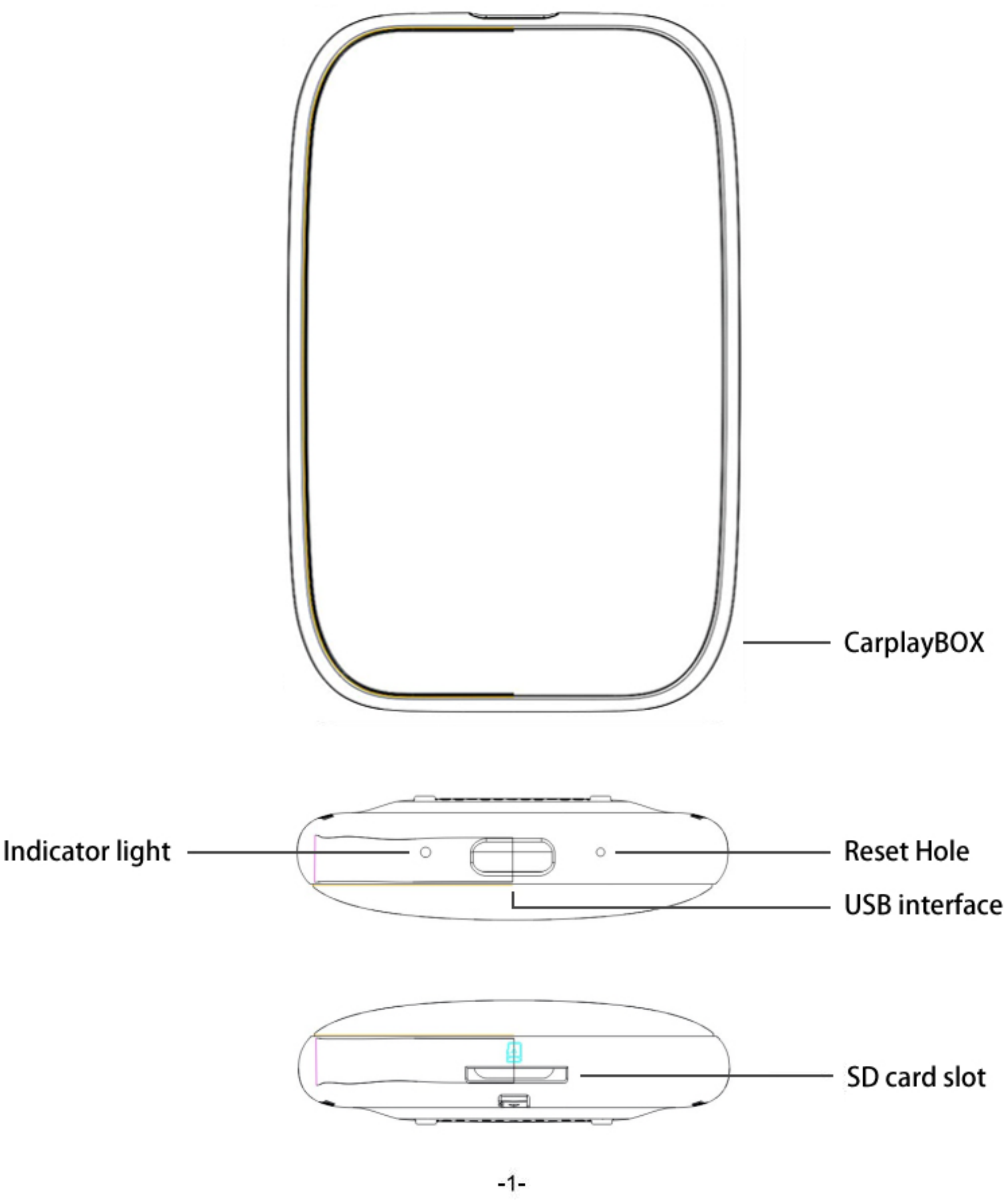
Product Instruction Manual

Please read this instruction manual carefully  
Please take good care of this instruction manual

Introduction

Welcome to choose our CarplayBOX! In order for you to use this machine correctly, please read the manual of this machine carefully before using it. We are dedicated to provide you with better products and services!

1. Product description



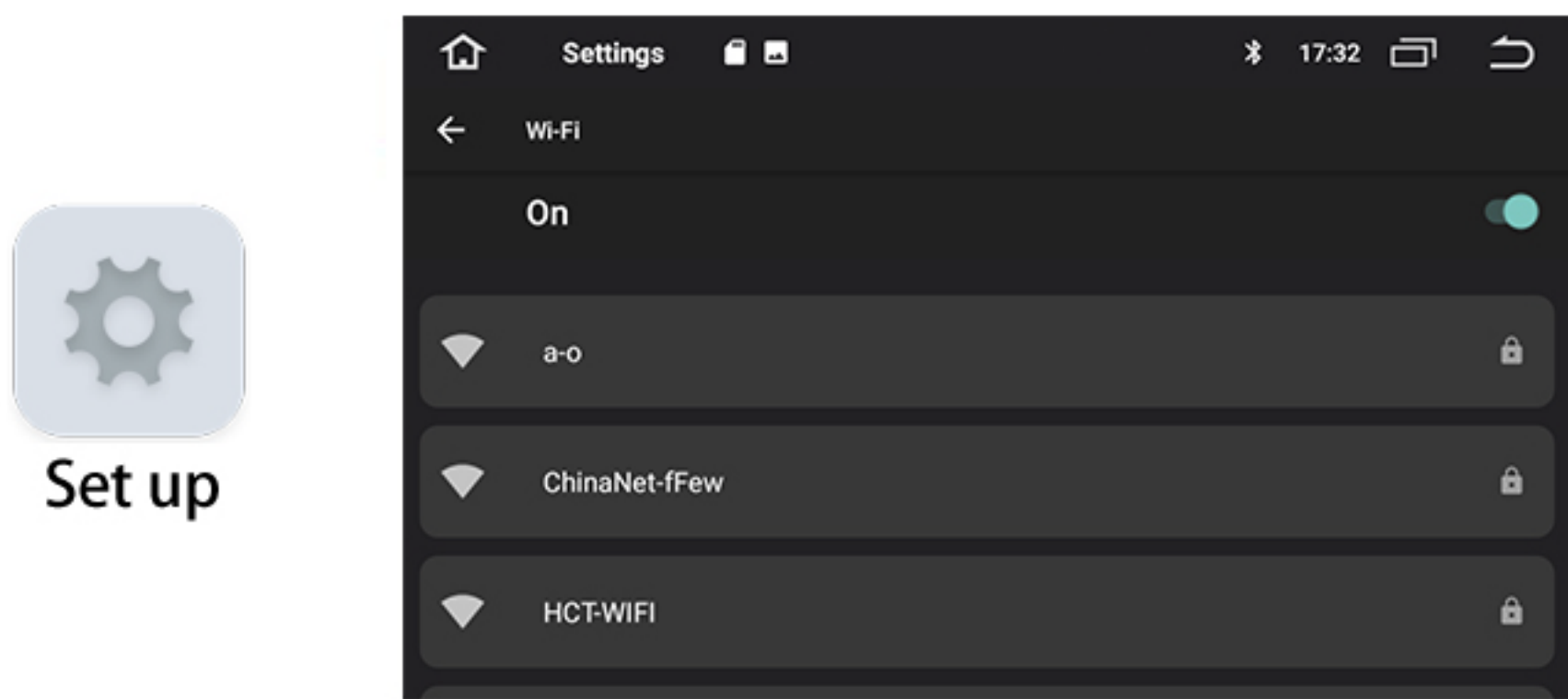
2. CarplayBOX connection

Reminder: This system only supports the original car models with wired Carplay!

Insert the USB cable at the USB interface of the car, and insert the other end of the USB cable at the bottom of the CarplayBOX. At this time, the indicator light is flashing, and the connection will be successful within 1 minute! (the indicator light is always on)The first connection needs to be adapted to the car central control device and resolution. CarplayBOX will restart automatically, which is a normal phenomenon.

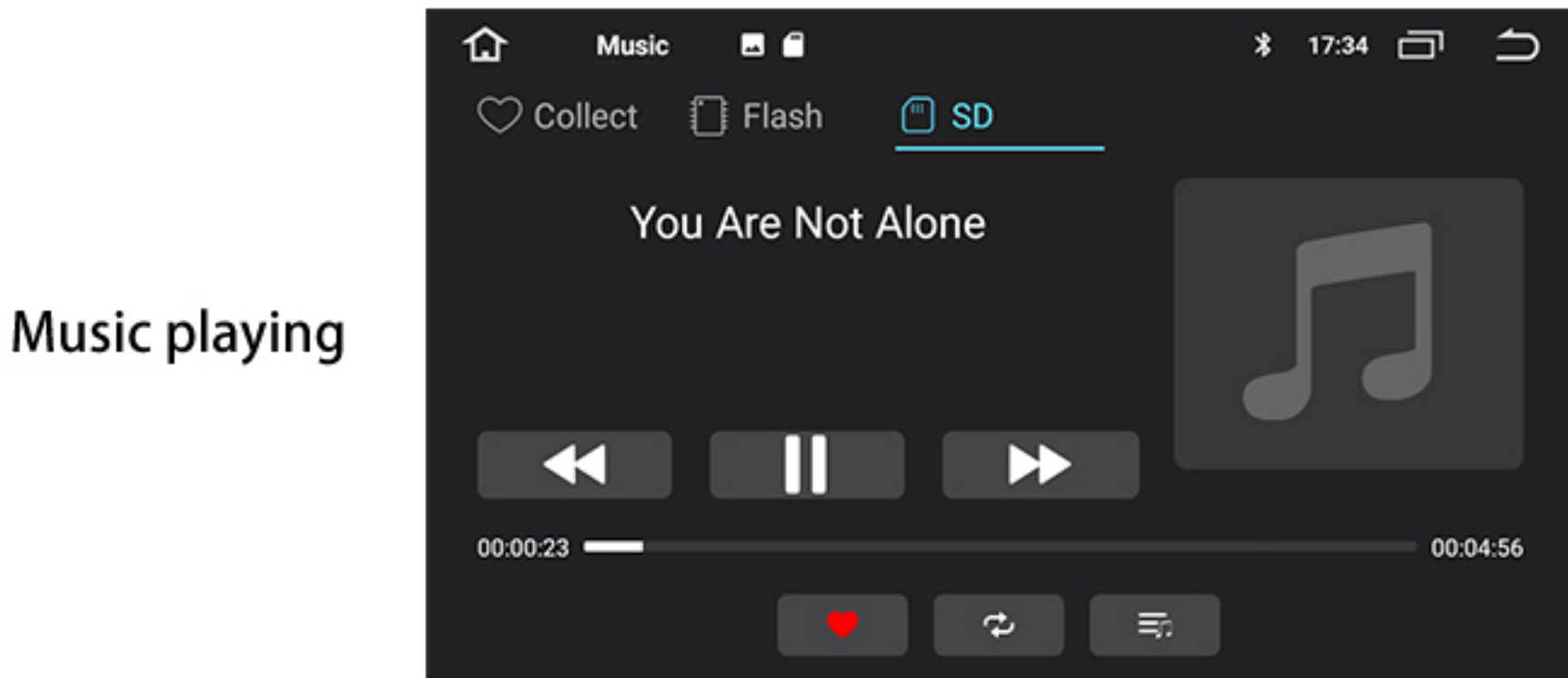
3. wifi connectivity

Go to your machine settings-open a wifi connection-find the wifi you want to connect to and enter your password for the connection



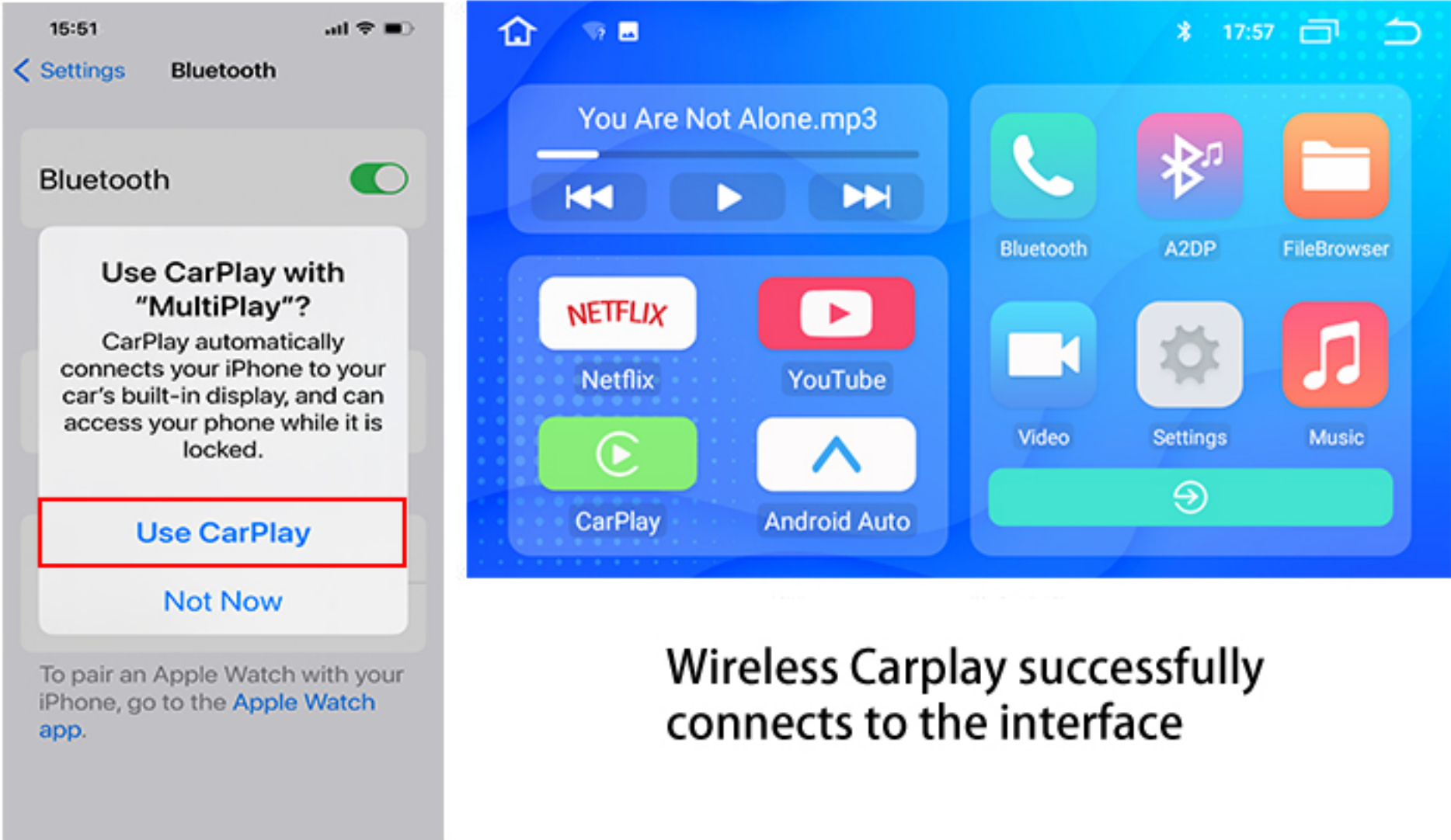
4. SD card media playback

Insert SD card can play music, pictures, video



5. Wireless Carplay connection (box to cell phone)

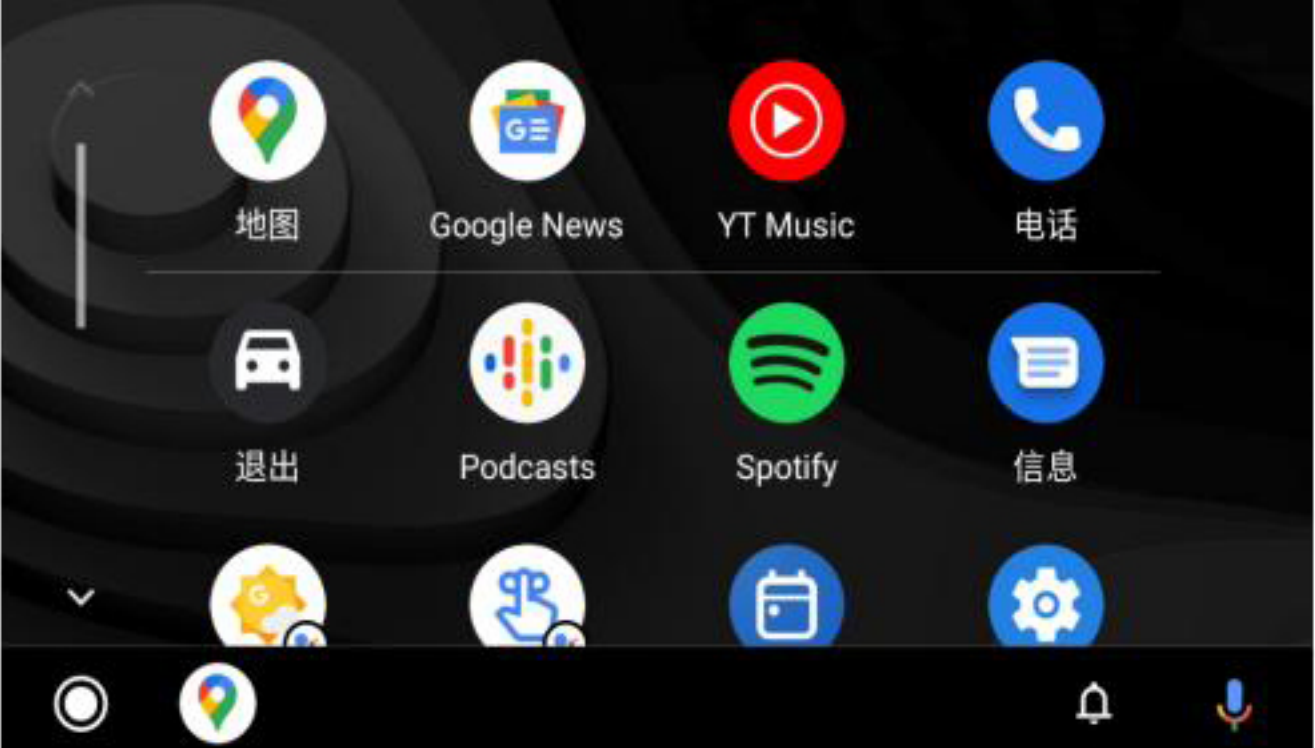
1. Connect to the iPhone's Bluetooth connection, and the success of the Bluetooth connection will pop up the notification window, click on "Use Carplay" (the Bluetooth connection will automatically disconnect after success, the phone wifi will automatically keep connected to the car's central control device hot)



Note: If you want to use the original car screen Bluetooth, you need to disconnect the wireless Carplay first

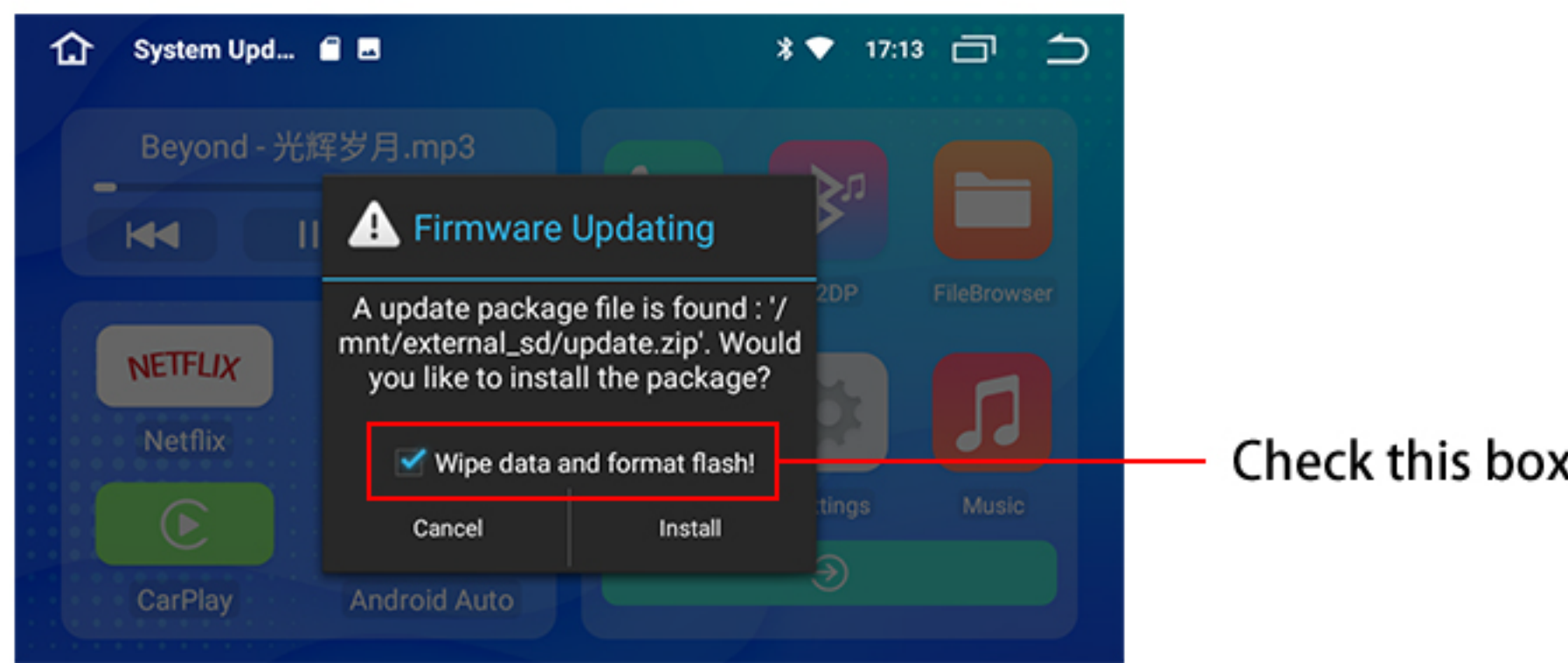
6. Wireless Auto Connection (box to cell phone)

Connect the Bluetooth of Android mobile phone, use wireless AUTO after successful connection



7. System upgrade

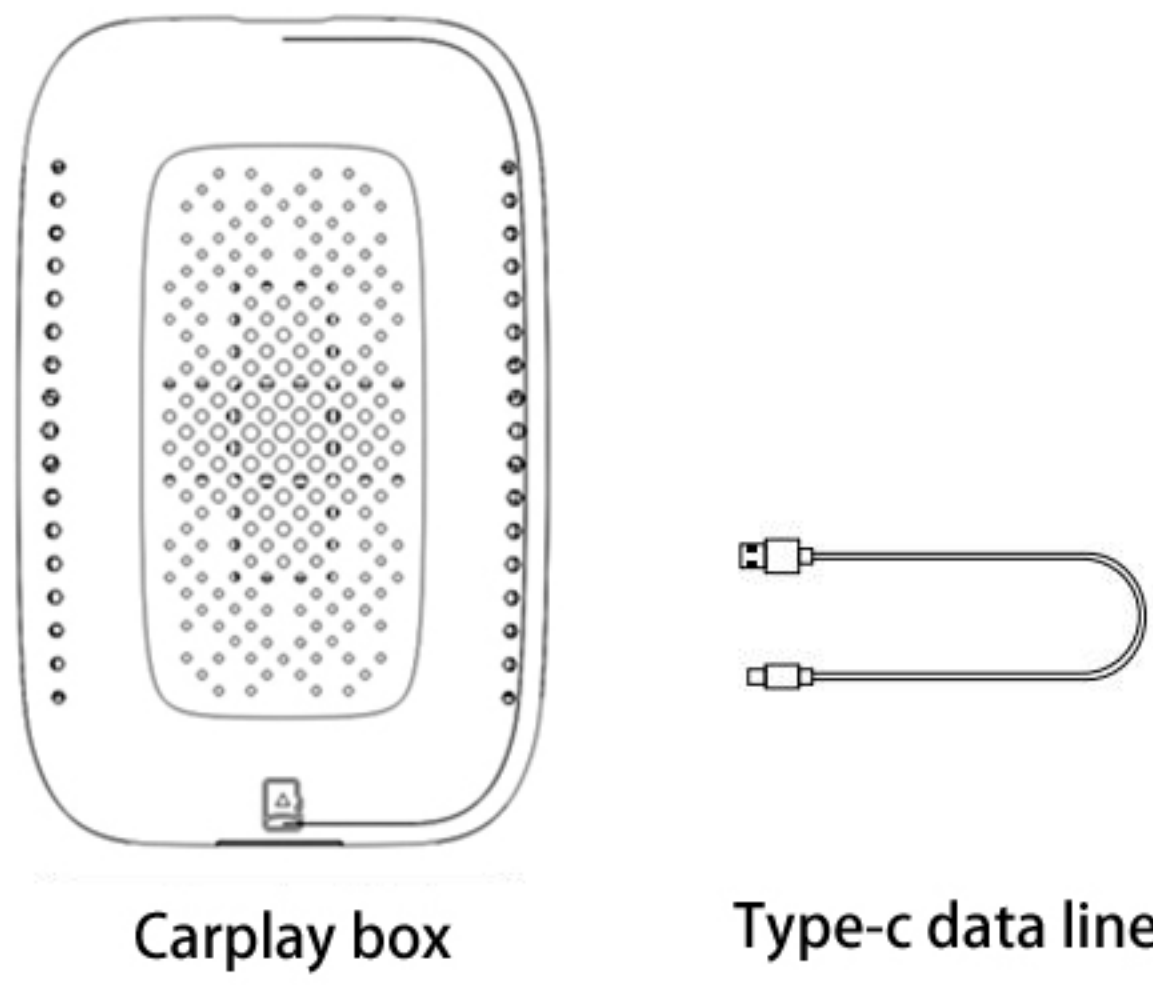
Place the update package (update.zip) in the SD Kaghan Directory, insert it into the card slot, and pop up the update confirmation box (make sure you check the box to clear the upgrade option) . Click OK and the product will be upgraded automatically. The upgrade will restart after it is successful



8. Common trouble shooting

- 1. The car cannot be connected after starting: please re-plug and unplug the box to connect again.
- 2. There are abnormal phenomena such as crash: please press the reset button RESET.
- 3. The wireless Carplay cannot be connected: Please check whether the Bluetooth of the mobile phone is turned on.
- 4. The SD card is not recognized: Please check whether the SD card is damaged, please re-insert the card or format or replace it with a new card.
- 5. 4G network cannot be used: Please check whether the SIM card still has data.
- 6. The box cannot be connected: Please clear the connection record of the central control device of the car.

9. Product list





FCC Warning:

This equipment has been tested and found to comply with the limits for a Class B digital device, pursuant to part 15 of the FCC Rules. These limits are designed to provide reasonable protection against harmful interference in a residential installation. This equipment generates, uses and can radiate radio frequency energy and, if not installed and used in accordance with the instructions, may cause harmful interference to radio communications. However, there is no guarantee that interference will not occur in a particular installation. If this equipment does cause harmful interference to radio or television reception, which can be determined by turning the equipment off and on, the user is encouraged to try to correct the interference by one or more of the following measures:

- Reorient or relocate the receiving antenna.
- Increase the separation between the equipment and receiver.
- Connect the equipment into an outlet on a circuit different from that to which the receiver is connected.
- Consult the dealer or an experienced radio/TV technician for help.

Caution: Any changes or modifications to this device not explicitly approved by manufacturer could void your authority to operate this equipment.

This device complies with part 15 of the FCC Rules. Operation is subject to the following two conditions:

(1) This device may not cause harmful interference, and (2) this device must accept any interference received, including interference that may cause undesired operation.

This equipment complies with FCC radiation exposure limits set forth for an uncontrolled environment. This equipment should be installed and operated with minimum distance 20cm between the radiator and your body.