



USER MANUAL



10.36"

Tablet powered by Android™

MODEL: A1083

www.azpenpc.com

Cautions

This user manual has been specially designed to guide you through the functions and features of your device.

- 1) Please read this manual carefully before using your device to ensure safe and correct use.
- 2) The descriptions in this manual are based on the default settings of your device.
- 3) Do not use this unit near water. Do not place over the unit any container with liquid inside.
- 4) Please do not put your device in high temperature, moisture, or dusty environment. The tablet is not waterproof.
- 5) Avoid impact or violent collision. Do not violently shake the touch screen, otherwise, it could lead to damage or display abnormal.
- 6) If system shutdowns automatically, it means the battery may be drained and charging is required.
- 7) Please charge the tablet regularly as if not in use for a long time, it may cause damage to the battery.
- 8) Do not disassemble or use alcohol, thinner or benzene class to swab product surface.
- 9) Please do not use the tablet when driving or walking.
- 10) Please choose the appropriate volume, if have tinnitus, lower the volume or stop using.
- 11) Memory and Storage space available is nominal as the Android operating system takes up part of the memory space as well as pre-installed applications on the device.
- 12) When CPU operates in high speed, especially playing 3D games or High-definition video for a long time, the device may get a little warm.
- 13) Please keep this manual for future reference.
- 14) The battery is contained and installed within the device so do not take try to remove or replace it.

Catalog

Chapter One: Overview

- 1.1 Appearance.**
- 1.2 Buttons.**
- 1.3 Power on and off.**
- 1.4 Open and close standby mode.**
- 1.5 Lock and unlock the screen.**
- 1.6 Homepage information bar.**
- 1.7 Text input.**
- 1.8 Reset.**
- 1.9 USB connection.**
- 1.10 Accessories.**

Chapter Two: Internet

- 2.1 Browser.**

Chapter Three: Application

- 3.1 File manager.**
- 3.2 Downloads.**

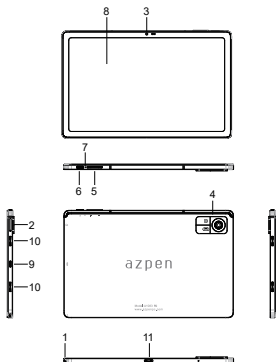
Chapter Four: System Setting

- 4.1 Wireless networks setting.**
- 4.2 Sound setting.**
- 4.3 Display setting.**
- 4.4 Apps setting.**
- 4.5 Security setting.**
- 4.6 Language & input setting.**
- 4.7 Date & time setting.**

Chapter Five: Specifications

Chapter One: Overview

1.1 Appearance



- | | |
|-------------------------------|---------------------------|
| 1. Headset Input 3.5mm | 6. Power button |
| 2. Micro SD Card Slot | 7. Reset hole |
| 3. Front camera | 8. Touch LED Panel |
| 4. Back camera | 9. Type-C Port |
| 5. Volume +/- key | 10. Speakers |
| | 11. PIN Port |

1.2 Buttons

Power button

Long press the power button 2-3 seconds to turn the unit on. When the tablet is in operation, short press power button to enter the off-screen state (standby mode) and short press it again to wake the screen up.

Volume

Press Volume+/- to adjust the volume.

1.3 Power on and off

Power on

Long press the power button 2-3 seconds, pictures will show up on the main screen.

Power off

Long press the power button, choose Power Off to shut down.

1.4 Open and close standby mode

Open the standby mode

When the tablet is in operation, you can press the power button to go to the standby mode which can save power.

Close the standby mode

When the tablet is in standby mode, you can press the power button to light up the screen and the unit will back to normal state.

1.5 Lock and unlock the screen

Lock

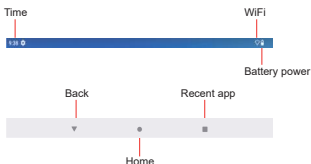
You can set the amount of sleep time in the settings.

The system will sleep automatically and lock the screen to the standby mode if without any activity when it reaches the preset standby time set in the settings.

Unlock

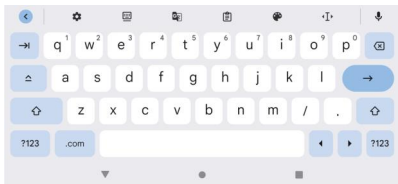
Drag  to unlock the screen and enter the main screen.

1.6 Homepage Information Bar




1.7 Text Input

When you use the tablet, you can use the virtual keyboard to input text, number, and symbols directly by touching the screen. After selecting the Android input method, the default keyboard shows as below:



To switch the numbers and letters, press 

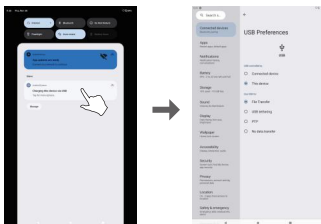
To switch the capital and lowercase letter, press 

1.8 Reset

Use a thin object (like the end of a paper clip) to press the reset button in the hole and your device will shut down. You need to press the power button to turn on the unit.

1.9 USB connection

Use the USB cable to connect the tablet with PC, click the drop down bar and you will see **Charging this device via USB**, click this sign to connect your device.



1.10 Accessories


USB Type-C Cable	1
Keyboard Case	1
User Manual	1

Chapter Two: Internet

2.1 Browser

Requires wireless network connection before using a web browser. If there's network connection problems, please contact your network operator or internet service provider. The web browser can connect to the Internet via WiFi to satisfy your business and individual needs.

Go to (Settings) to set up the WiFi so that you can use the browser and connect to the internet.

Touch  (Chrome) in the application list to enter the browser pages.



Input URL: Touch the input area to get the soft key board, then input the URL internet address.

Touch: To show the submenu of the browser, and choose the corresponding one accordingly.

Chapter Three: Application


3.1 File Manager

Touch (File manager) to copy files among SD card, USB, and internal memory.



3.2 Downloads

Touch O to preview the downloading and downloaded documents. You can stop the downloading file or delete the downloaded file.

Chapter Four: System Setting

Click  (Settings) to enter the system setting interface.

4.1 Wireless networks setting

Set WiFi to ON, the system will scan the available wireless networks automatically and display the wireless local area network in the list. If the local area network has the sign , it represents the network has been encrypted, it needs password for connection. While the sign  represents the network is unlocked and can be connected directly.

4.2 Sound setting

Set the system volume, the default notification sound, enable or disable the touch sound and screen lock sound.

4.3 Display setting

Set the brightness, wallpaper, sleep time and font size.

4.4 Apps setting

Display the applications. Choose one application and the relevant information will show up, then you can choose force stop or uninstall. You can also choose to clear the cache, unloaded program and default value.

4.5 Security setting

Set the system securities.

4.6 Language & input setting

Set the default language and input method.

4.7 Date & time setting

Set date and time manually or set automatic date and time by using network-provided time.

Chapter Five (Specifications)

Dimension(mm*mm*mm)	246.7 x 156.5 x 7.7mm
Product Weight	Approx 480g
LCD	10.36" IPS 1200*2000
OS	Android
CPU	Octa Core 2.0Ghz
Memory	6GB RAM, 128GB Storage
WIFI	802.11a/b/g/n/ac+BT5.0
Charging Connection	Type-C USB Port
Battery	3.8V/6000mAh Li- Poly
Video Time	Up to 4h video
Operating Temperature	Between 0°C to 40°C



If at any time in the future you should need to dispose of this product please note that waste electrical products should not be disposed of with household waste. Please recycle where facilities exist. Check with your Local Authority or retailer for recycling advice. (Waste Electrical and Electronic equipment Directive)

⚠ Owing to continuous improvement, no prior notice will be given regarding changes on above feature and spec.

Android and Chrome are trademarks of Google LLC.



For more information or to
register online, visit us at:

www.azpenpc.com

For customer service, please contact:

(855) 297-3672

support@azpenpc.com

Monday—Friday

9:00 am — 5:30 pm (CST)

MADE IN CHINA DESIGNED IN USA

FCC Statement

Tablet PC has been tested and found to comply with the limits for a Class B digital device, pursuant to part 15 of the FCC Rules. These limits are designed to provide reasonable protection against harmful interference in a residential installation. This equipment generates, uses and can radiate radio frequency energy and, if not installed and used in accordance with the instructions, may cause harmful interference to radio communications. However, there is no guarantee that interference will not occur in a particular installation. If this equipment does cause harmful interference to radio or television reception, which can be determined by turning the equipment off and on, the user is encouraged to try to correct the interference by one or more of the following measures:

- Reorient or relocate the receiving antenna.
- Increase the separation between the equipment and receiver.
- Connect the equipment into an outlet on a circuit different from that to which the receiver is connected.
- Consult the dealer or an experienced radio/TV technician for help.

Caution: Any changes or modifications to this device not explicitly approved by manufacturer could void your authority to operate this equipment.

This device complies with part 15 of the FCC Rules. Operation is subject to the following two conditions:

This device may not cause harmful interference, and (2) this device must accept any interference received, including interference that may cause undesired operation.

Specific Absorption Rate (SAR) information:

Tablet PC meets the government's requirements for exposure to radio waves. The guidelines are based on standards that were developed by independent scientific organizations through periodic and thorough evaluation of scientific studies. The standards include a substantial safety margin designed to assure the safety of all persons regardless of age or health. FCC RF Exposure Information and Statement the SAR limit of USA (FCC) is 1.6 W/kg averaged over one gram of tissue. Device types: Tablet PC has also been tested against this SAR limit. This device was tested for typical body-worn operations with the back of the Tablet PC kept 0mm from the body. To maintain compliance with FCC RF exposure requirements, use accessories that maintain an 0mm separation distance between the user's body and the back of the Tablet PC. The use of belt clips, holsters and similar accessories should not contain metallic components in its assembly. The use of accessories that do not satisfy these requirements may not comply with FCC RF exposure requirements, and should be avoided.