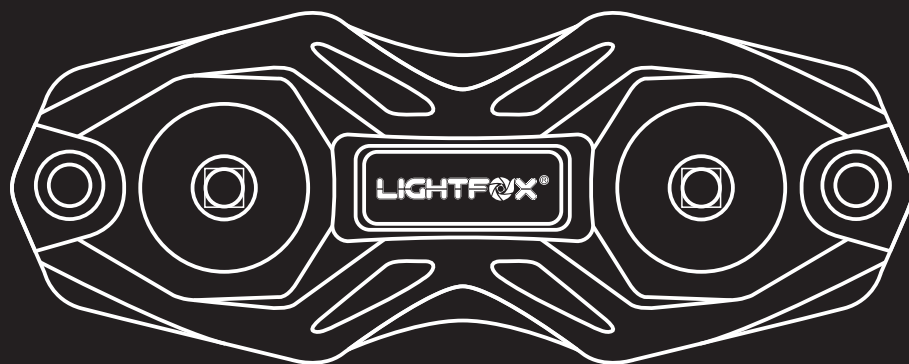




RGBW Rock Lights Guide



Models: LF-RL-RGBW-UFA*4 ; LF-RL-RGBW-UFA*8

Please read this manual carefully before installation,
and retain it for future reference.

V1.1



ABOUT US

Lightfox, founded in August, 2017, is an Aussie brand that is built around professional 4x4 lighting solutions and centers on delivering superior output with excellent value and rock-solid reliability that has won the trust of outdoor enthusiasts across Australia.

From the R&D of 4x4 LED auxiliary lights, to the optically upgraded reflectors, strictly tested wiring harness, switch, and control panel, our range of products are built to fulfill your demands for lighting, and we at Lightfox work to transfer every single luminous energy to boost your vision.

At Lightfox, we strive for quality, performance, and fair prices and at the same time, offer superior value to our amazing customers. This commitment is what drives us to continuously develop and improve our products to fulfill your needs. Because we want to make you our loyal customer.

Over the years, we've fostered a customer-oriented culture and collaborative and supportive teams that have been the key behind every progress we've made. And our passion to innovate has built Lightfox into something we're proud of.

Lightfox, The Vision To Explore Your Passion.

PARTS LIST

LF-RL-RGBW-UFA*4:

LIGHTFOX RGBW LED Rock lights (4)

Flat Backed Mounting Pads (4)

Curved Backed Mounting Pads (4)

LF-RL-RGBW-UFA*8:

LIGHTFOX RGBW LED Rock lights (8)

Flat Backed Mounting Pads (8)

Curved Backed Mounting Pads (8)

SAFETY INSTRUCTIONS

- Completely read instructions before installation.
- Damage to your product or other property may result if you DO NOT follow instructions.
- Connect rock light modules prior to applying power to the splitter cable.
- DO NOT mount modules next to sources of high heat such as the motor, exhaust components, brake components or cooling system components.
- The placement of LED lighting should not restrict airflow to the radiator, or block head lamps, turn signals, or parking lights.
- DO NOT install any luminaire assembly closer than 6" from any combustible materials.
- DO NOT mount modules near lifting points of the vehicle.
- Secure all wiring prior to moving the vehicle.
- Disconnect power before installing, adding or changing any component.
- DO NOT extend the RGBW wires by yourself.
- Check your local state laws before using accent color or flashing features. Lightfox is not liable for any fines you may receive or other issues.
- Be sure this LED rock light is within 49 feet (15 meters) of your mobile phone.
- Please ensure that your LED rock light is not connected to other mobile phones; when connected, it can not be searched by other phones.
- Compatible with iOS 11 or Android 11 above.

FCC RADIATION EXPOSURE STATEMENT

This equipment complies with FCC radiation exposure limits set forth for an uncontrolled environment. This equipment should be installed and operated with minimum distance 20cm between the radiator & your body.

FCC WARNING

This device complies with Part 15 of the FCC Rules. Operation is subject to the following two conditions:

(1) This device may not cause harmful interference, and (2) this device must accept any interference received, including interference that may cause undesired operation.

NOTE 1: This equipment has been tested and found to comply with the limits for a Class B digital device, pursuant to part 15 of the FCC Rules. These limits are designed to provide reasonable protection against harmful interference in a residential installation. This equipment generates uses and can radiate radio frequency energy and, if not installed and used in accordance with the instructions, may cause harmful interference to radio communications. However, there is no guarantee that interference will not occur in a particular installation. If this equipment does cause harmful interference to radio or television reception, which can be determined by turning the equipment off and on, the user is encouraged to try to correct the interference by one or more of the following measures:

- Reorient or relocate the receiving antenna.
- Increase the separation between the equipment and receiver.
- Connect the equipment into an outlet on a circuit different from that to which the receiver is connected.
- Consult the dealer or an experienced radio/TV technician for help.

NOTE 2: Any changes or modifications to this unit not expressly approved by the party responsible for compliance could void the user's authority to operate the equipment.

HOW TO USE

1. Download App:

Search “Car Light” in the App Store or in the third party app stores for Android and click install.

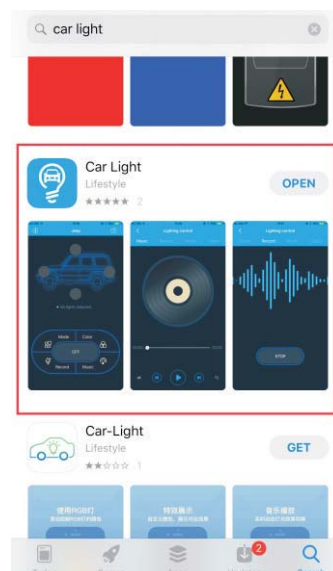
Or scan the QR code to download.



iOS



Android

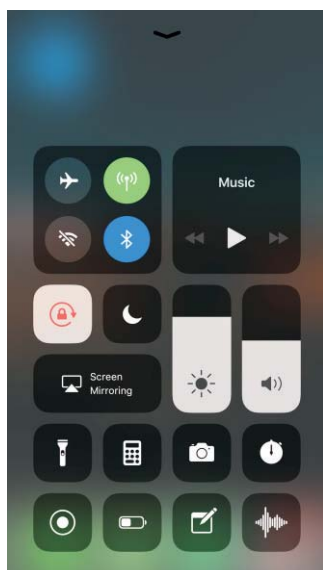


Note:

Depending on your operating system, Android or iOS, your screen layout may differ slightly from the following screenshots.

2. Open App:

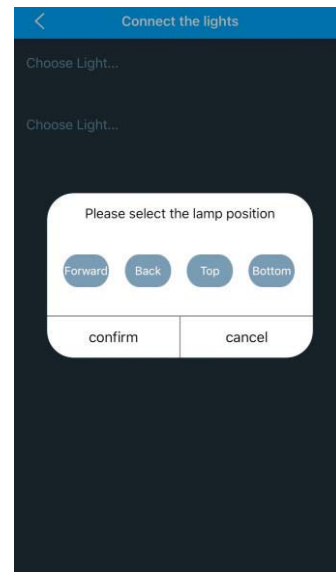
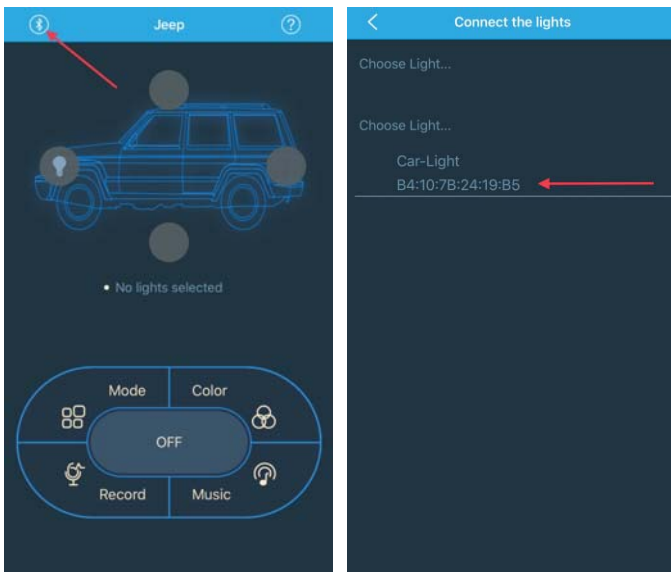
Turn on the bluetooth on your phone and open the app.



3. Find Your Device:

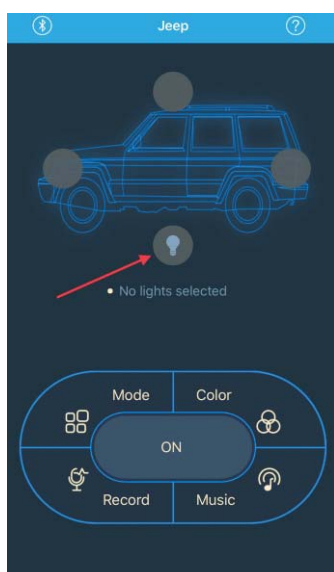
Once you open the app, click the bluetooth icon, then the "Car-Light". Now, it is connected to your iPhone.

Select the lamp position, then confirm.

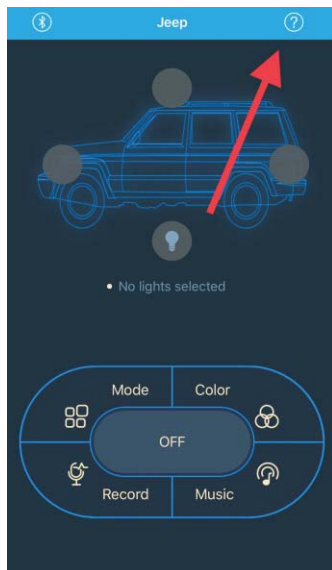


Click the icon

Click ON, and your light will be on.

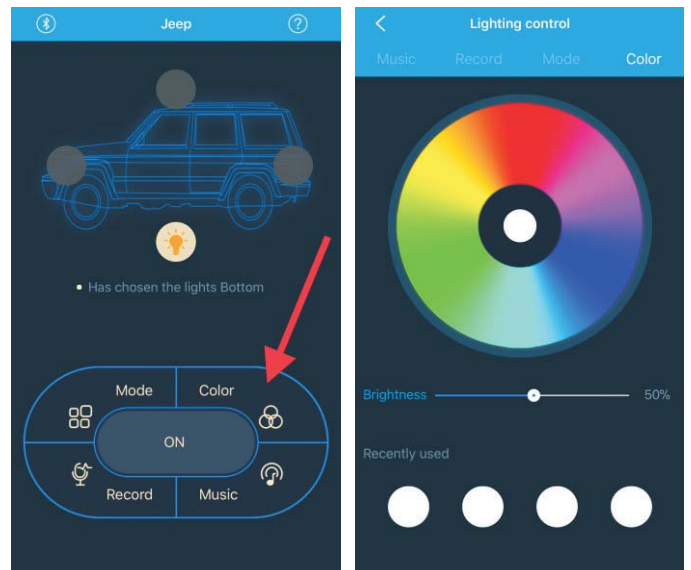


Note: Clicking on the question mark in the upper right will take you to a help screen.



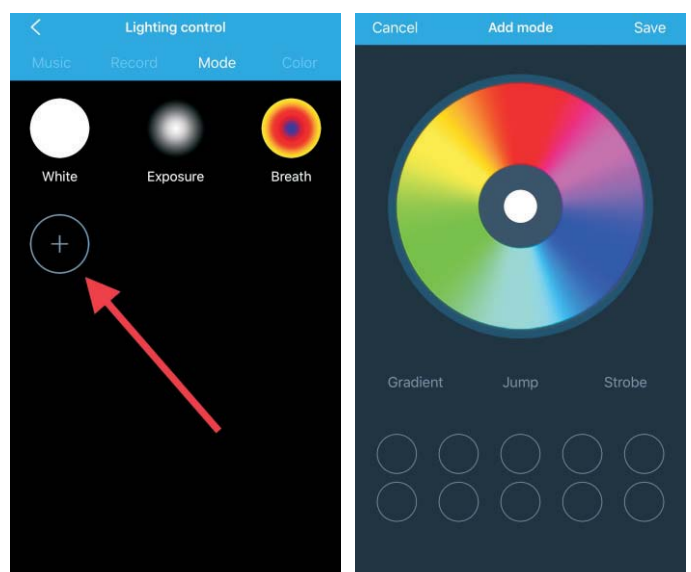
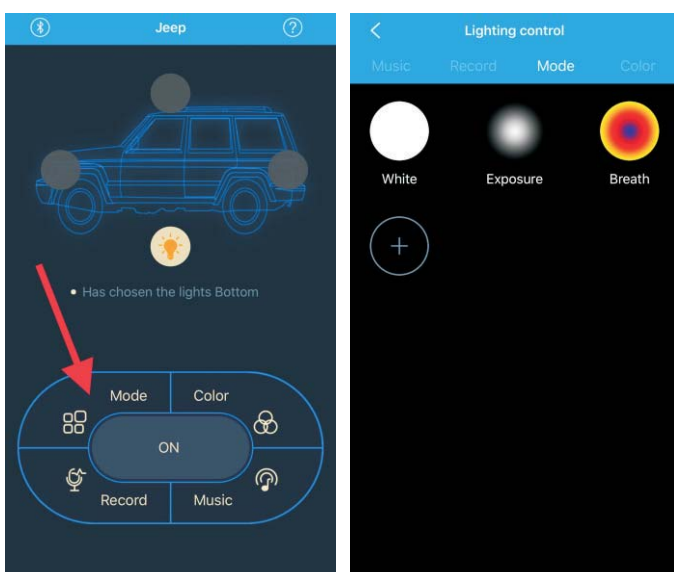
4. Color & Brightness:

Click “color” and it will bring up a screen where you can adjust the color and brightness. Color can be adjusted by pushing anywhere on the color wheel and brightness can be adjusted by sliding the bar left or right.

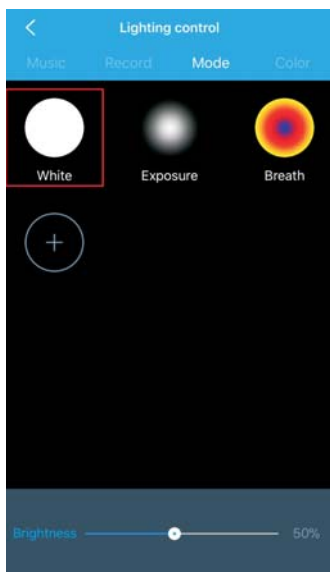


5. Mode: There are many effects preloaded on the app from single color fades to multi-color fades. You can also select the brightness or speed of the mode by sliding the bar left or right.

You can also customize the mode to suit your scenarios.



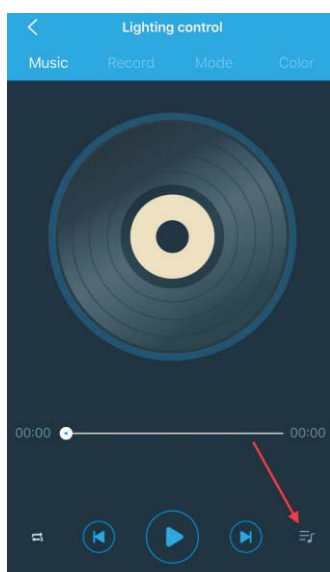
When it is set into the white mode the separate white LED chip will illuminate while other LED chips remain off. This is what you will find in our RGBW rock lights.



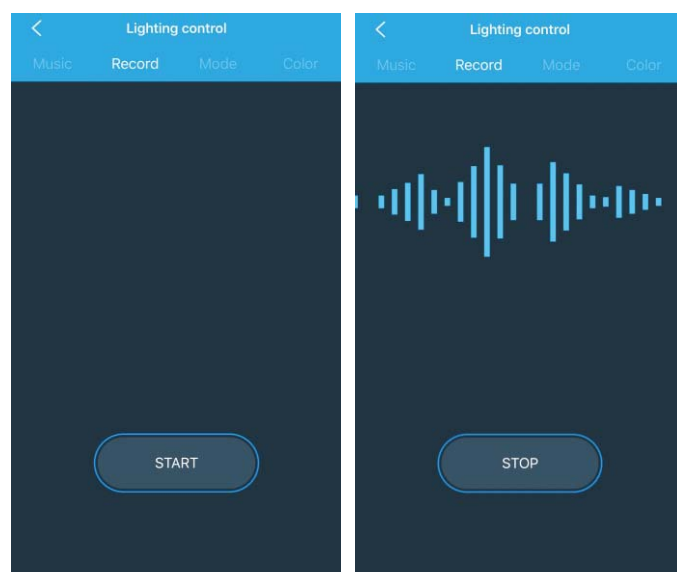
6. Music: The controller has the ability to change the lights to the beat of music. Push the play button and select your desired music. Please note that music must be installed on your phone, the controller will not work with streaming programs.



Click to add music

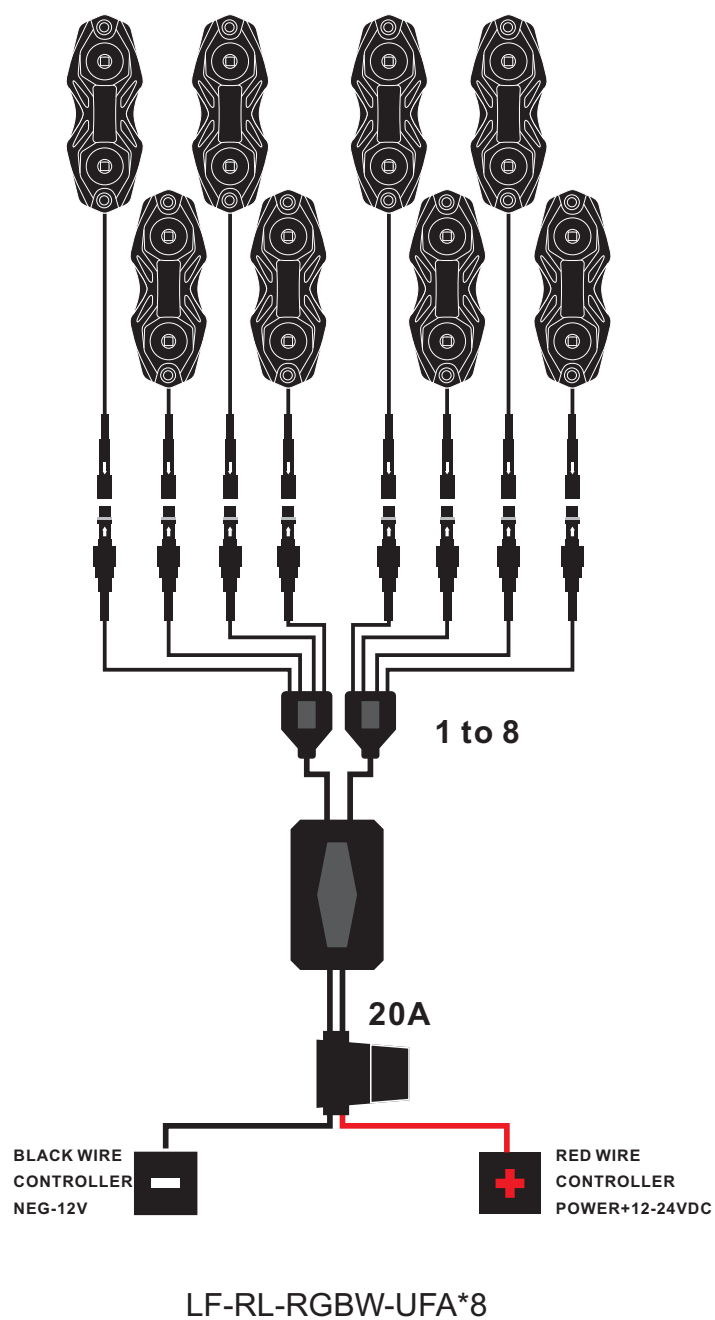
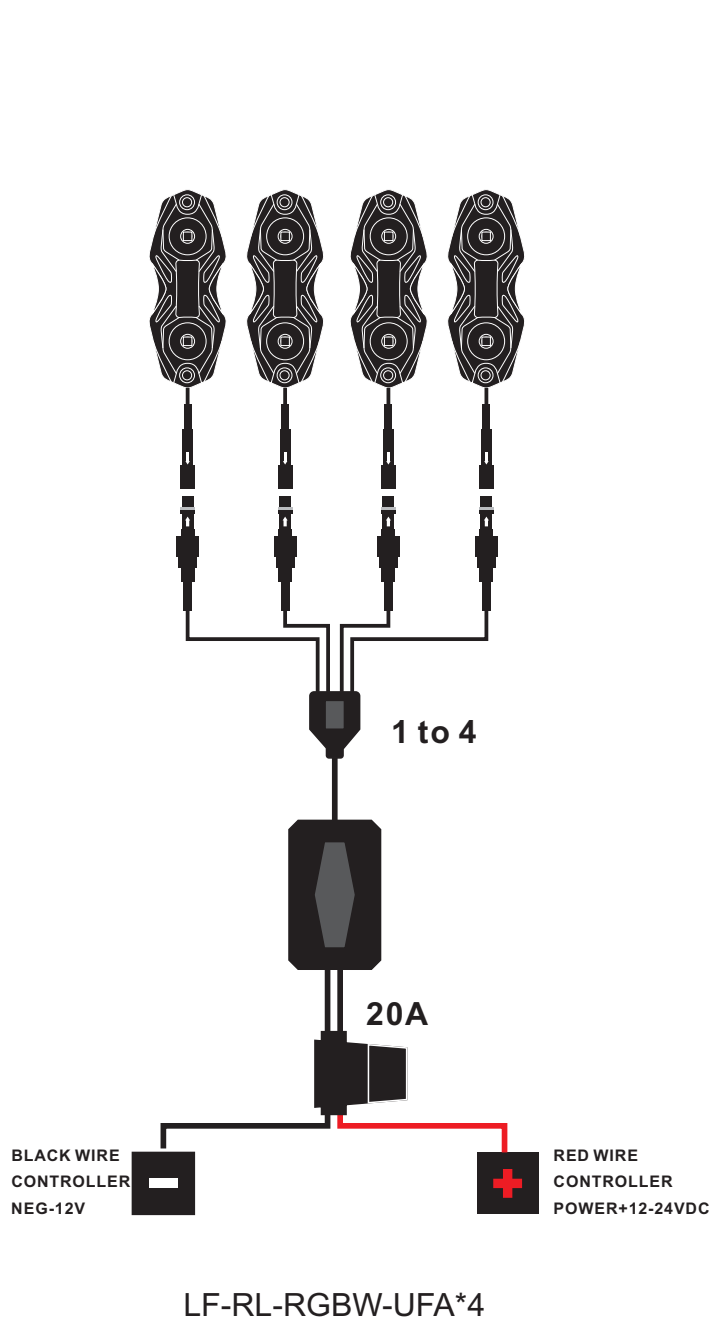


7. Record: Also known as "Disco", if you select the microphone option the lights will change based on the sounds your phone picks up.

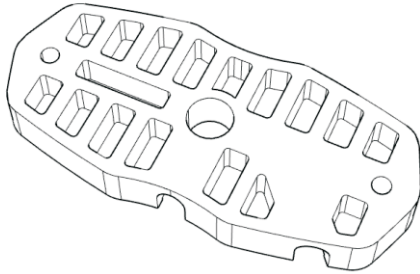


WIRE DIAGRAM

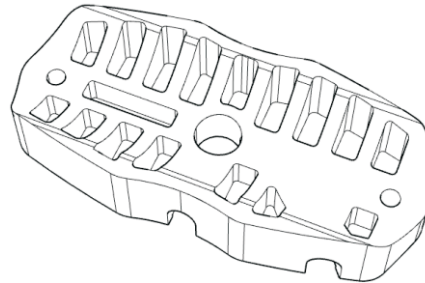
ARROW TO ARROW



TYPES OF MOUNTING PADS

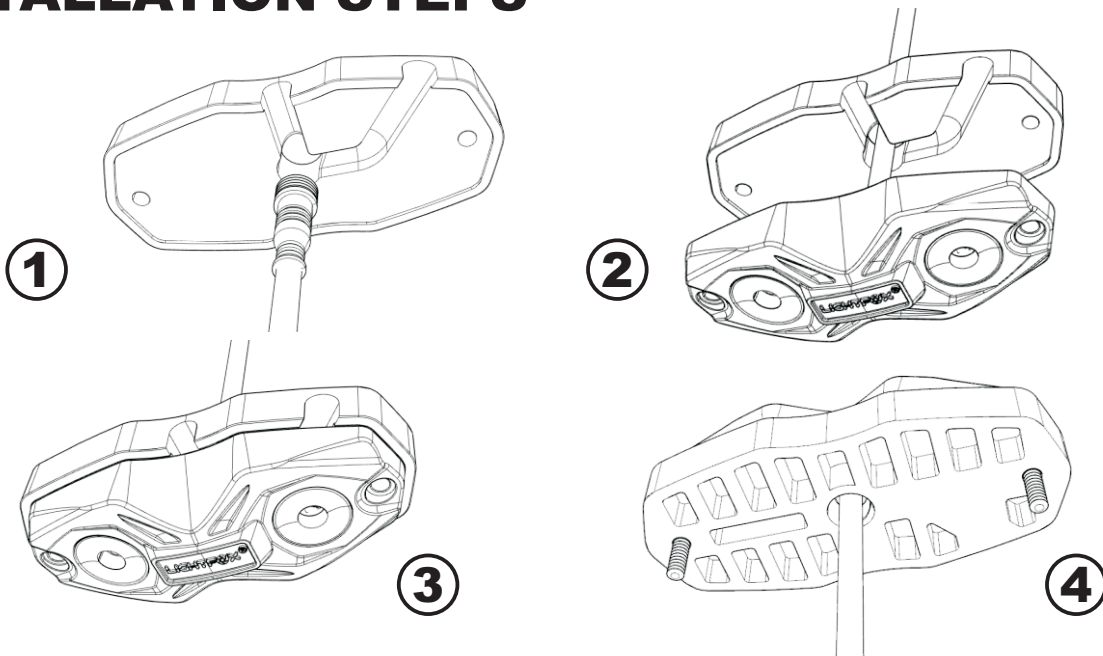


Flat Backed Mounting Pad



Curved Backed Mounting Pad

INSTALLATION STEPS



MOUNTING INSTRUCTIONS

Frame Mounting: Locate the rock light and curved or flat mounting pad and assemble them.

Align both items onto desired mounting location on the vehicle's frame.

Note: The rubber mounts have several wire passages that allow the wires to be routed as best suited for the desired location.

Use a transfer punch to mark the proper hole locations then drill pilot holes with an 11/64" drill bit.

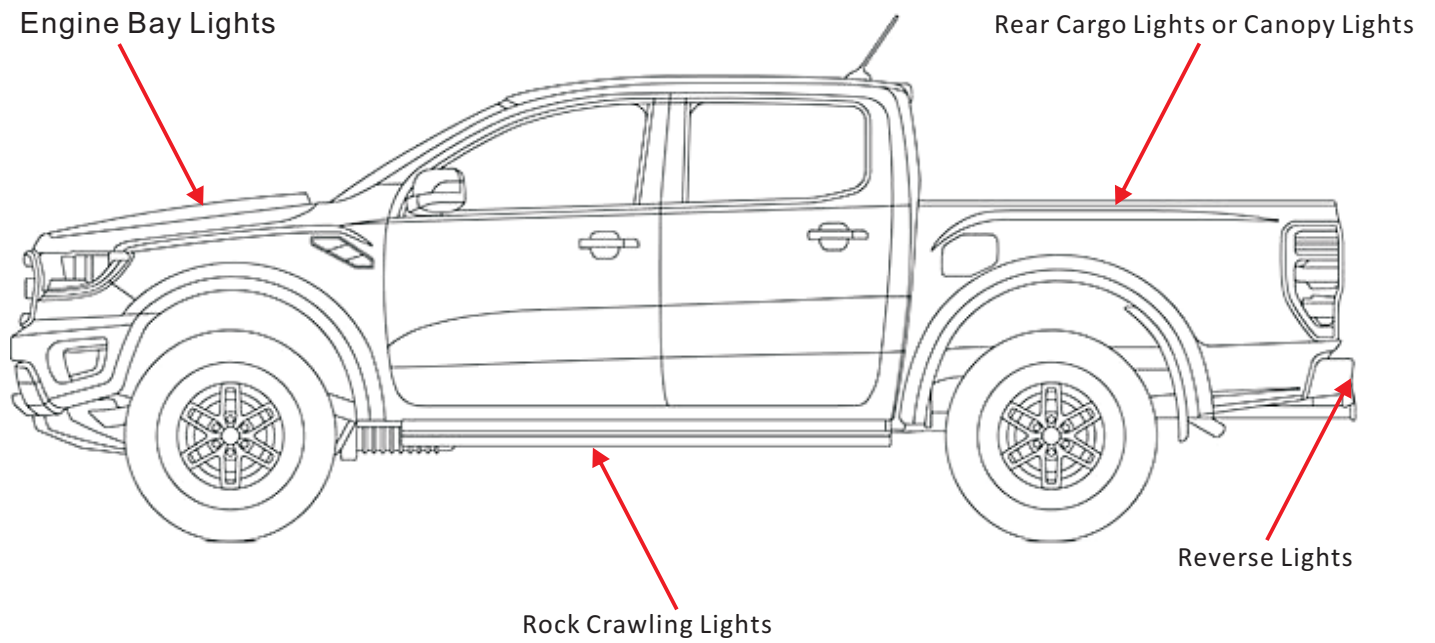
Screw them into the vehicle's frame to secure the rock light along with the angle or flat mount onto the vehicle.

It is important to use thread lubricant to prevent the screws from galling.

Repeat the steps for other rock lights.

Bumper Mounting: Use the M4 hardware supplied with the Westin WJ2 bumper to mount the lights in the pre-existing holes in the bumper. When properly installed the lights should shine through the oval holes in the bumper.

INSTALLATION INSTRUCTIONS





RGBW ROCK LIGHTS WARRANTY

The Lightfox RGBW LED rock lights (the Product) will be free from defects in materials and workmanship for the warranty period of 3 Years commencing on the date of purchase from Lightfox ('the Warranty').

Lightfox will rectify any defect in materials or workmanship appearing within the Warranty period by repairing or replacing the Product at its option. And Lightfox reserves the right to determine whether the Product contains any defects in materials or workmanship covered by the Warranty.

You are entitled to a replacement or refund for a major failure and for compensation for any other loss or damage. You are also entitled to have the goods repaired or replaced if the goods fail to be of acceptable quality and the failure does not amount to a major failure.

A claim under the Warranty must be made within the Warranty period, which commences on the date of purchase from Lightfox. To make a Warranty claim, the Product must be returned to the place of purchase together with proof of purchase unless otherwise agreed by Lightfox.

Any costs incurred in making a Warranty claim or returning a Product to the place of purchase are to be borne by the person making the Warranty claim unless otherwise agreed by Lightfox.

This Warranty does not cover any defect or injury caused by, or associated with improper installation or maintenance; unauthorised service, repair, modification or alteration; unsuitable physical or operating environment; electrical supply; misuse, abuse or neglect; accidental damage, or other alterations or modifications which affect the reliability or performance of the product not attributable to a defect in materials or workmanship.

The warranty against defects contained in this document replaces any other warranty against defects or voluntary warranty given in relation to the products.

