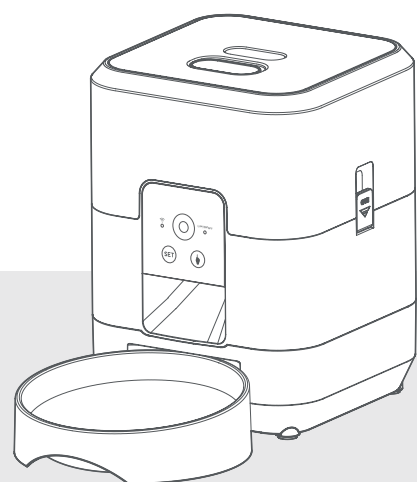


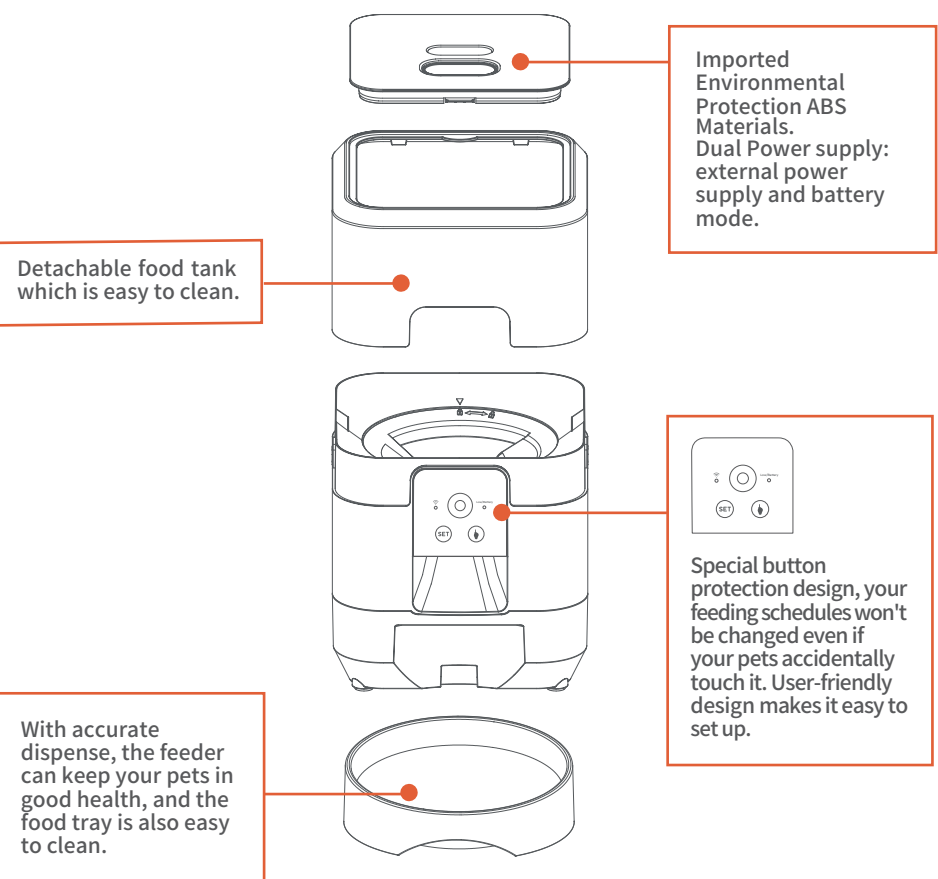
AUTOMATIC PET FEEDER WITH Camera

# Manual

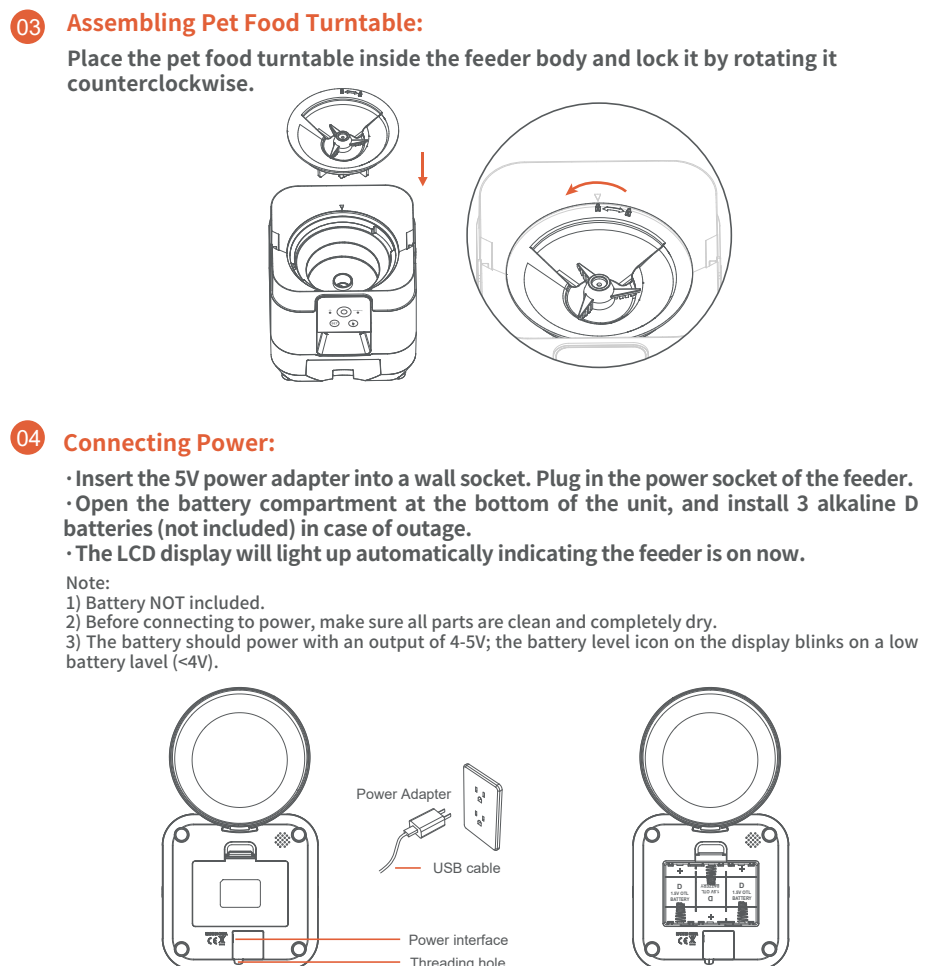
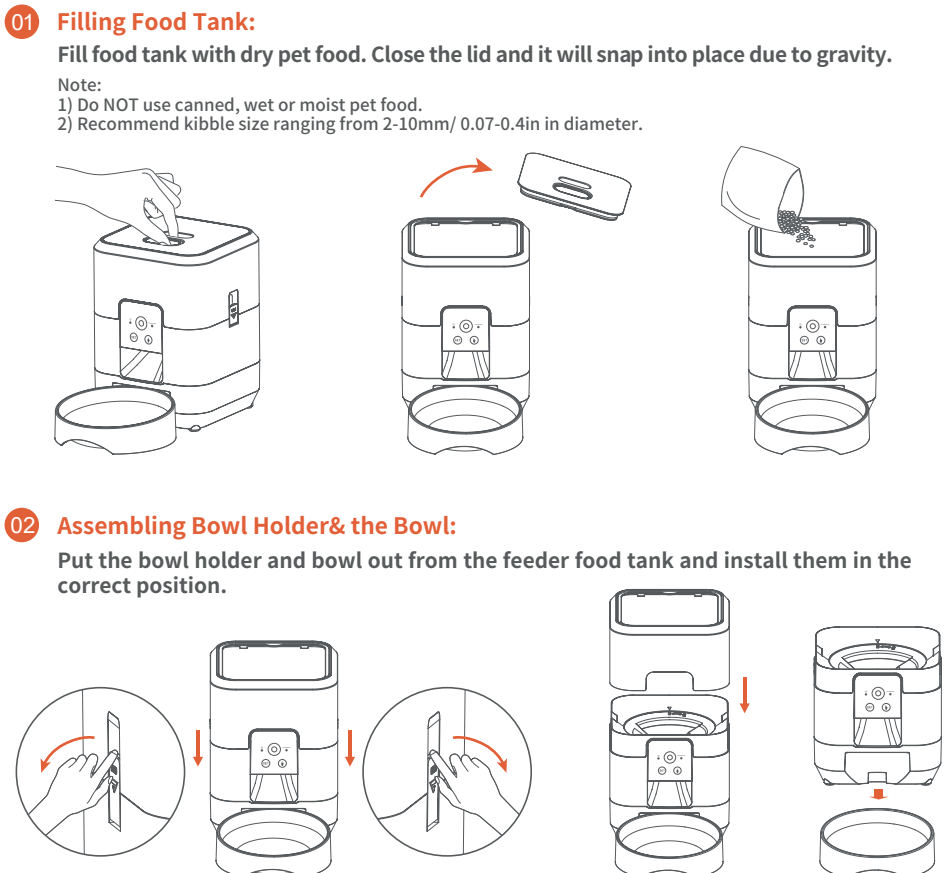
Please read carefully before using the product



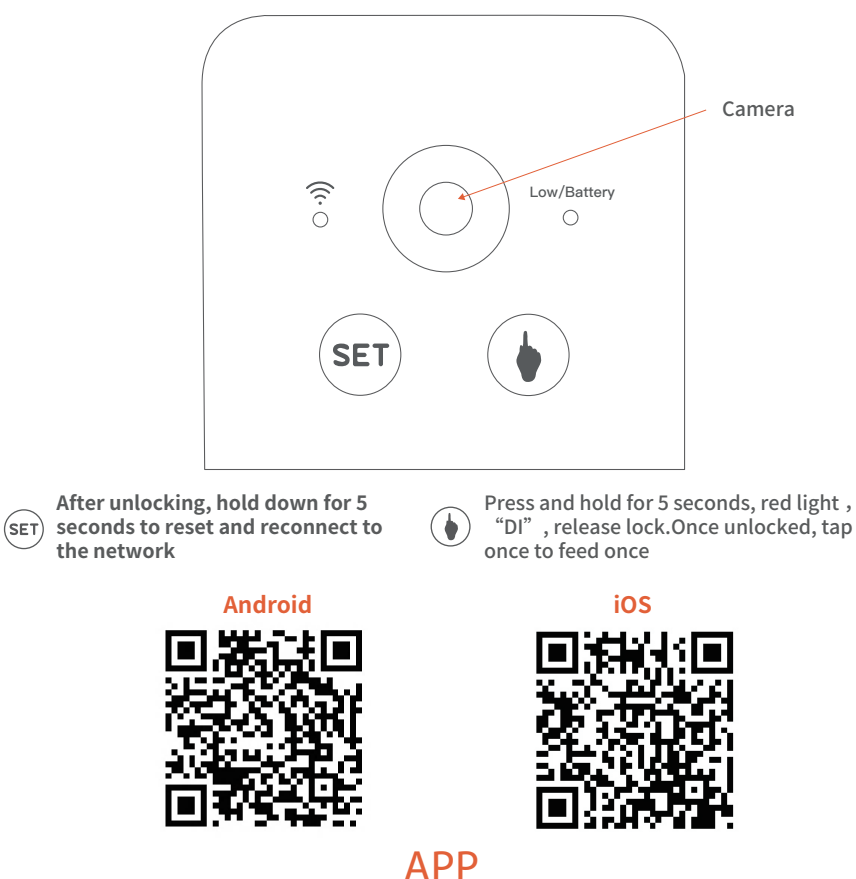
## Features of Automatic Pet Feeder



## Assemble and Use



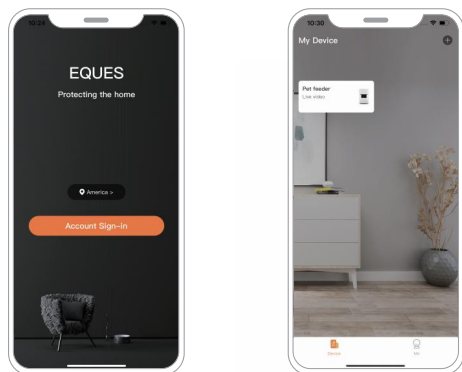
## Function Introduction



## WiFi Intelligent Pet Feeder Smart App Specific Operation

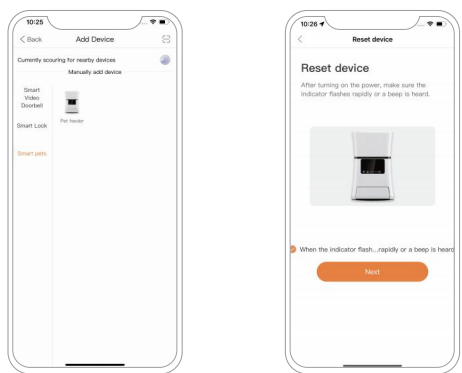
### Add Device

- 01** Start the Dingdong client, click on "Register" in the bottom left corner of the login, follow the prompts to complete user registration, or log in directly using a third-party account; Click "+" to enter the add device page.

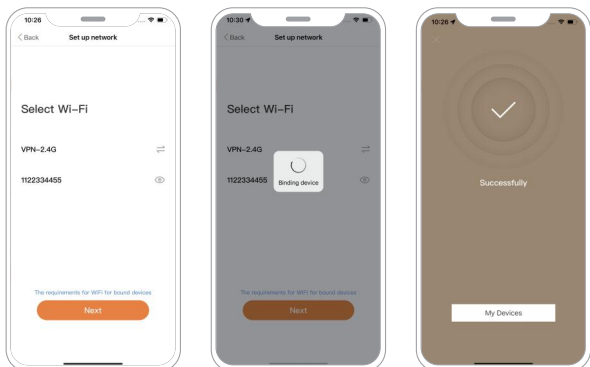


\*The schematic diagram is for reference only. Due to the update and upgrade of the app version and different phone systems, the actual display may vary slightly

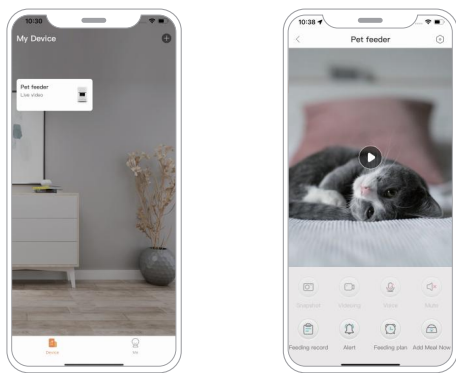
- 02** Press the left button of the device twice in a row to enter the distribution network mode. Select Smart Pet and Pet Feeding Machine on the list page, and click "Next".



- 03** Ensure that the Bluetooth permission of the device is turned on, select 2.4GHz WiFi at home, enter the password, and click next.



- 04** Binding successful. You can click on "Pet Feeding Machine" on the homepage to create feeding plans, set meal refills, and remotely view in real-time.



- 05** This product is equipped with a camera, please use it legally. Do not use this product in private areas such as bedrooms, bathrooms, changing rooms, etc. Otherwise, it may result in you having to bear corresponding legal consequences. Please be sure to (a) Set a high-strength unique password; (b) Regularly update device firmware; (c) Carefully choose whether to activate cloud storage functionality (if applicable) and understand the risks associated with data storage and transmission.

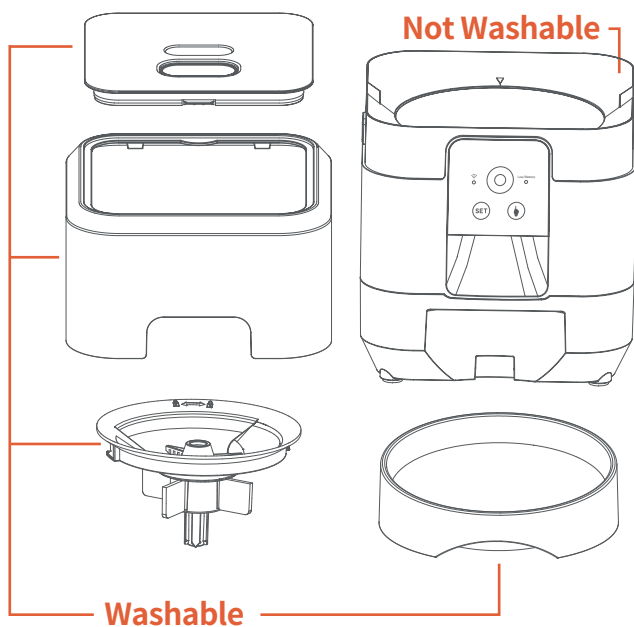
- 06** User Security Warning  
To avoid fire, electric shock, or product damage, do not expose this product to rain, humid environments, or extreme temperatures. Only use power adapters with legal and regulatory qualifications. Do not attempt to disassemble or repair the internal parts of this product on your own, as this may result in injury or void the warranty.

## Add Device

1. When the battery is low, the LED red light will light up and flash, and the backup battery needs to be replaced;  
2. Recording needs to be set in the APP.

## How to clean the feeder

This product cannot be placed outdoors or exposed to the rain. Please use a wet cloth to clean it and prevent water from entering the feeder. If you need to open the food tank, please pull out the head of the robot with strength. The food tank and food bowl can be washed by water.



**FCC Warning Statement:** Changes or modifications to this unit not expressly approved by the party responsible for compliance could void the user's authority to operate the equipment. This equipment has been tested and found to comply with the limits for a Class B digital device, pursuant to Part 15 of the FCC Rules. These limits are designed to provide reasonable protection against harmful interference in a residential installation. This equipment generates, uses and can radiate radio frequency energy and, if not installed and used in accordance with the instructions, may cause harmful interference to radio communications.

However, there is no guarantee that interference will not occur in a particular installation. If this equipment does cause harmful interference to radio or television reception, which can be determined by turning the equipment off and on, the user is encouraged to try to correct the interference by one or more of the following measures:

- Reorient or relocate the receiving antenna.
- Increase the separation between the equipment and receiver.
- Connect the equipment into an outlet on a circuit different from that to which the receiver is connected.
- Consult the dealer or an experienced radio/TV technician for help.

This device complies with Part 15 of the FCC Rules. Operation is subject to the following two conditions: (1) this device may not cause harmful interference, and (2) this device must accept any interference received, including interference that may cause undesired operation.

#### **FCC Radiation Exposure Statement**

The device has been evaluated to meet general RF exposure requirement. The device can be used in portable exposure condition without restriction.