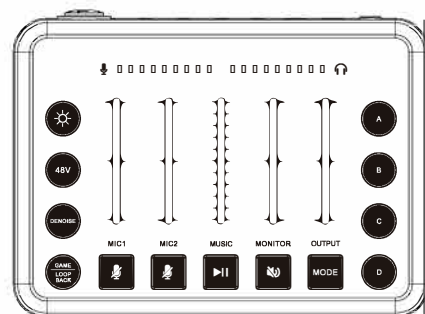


## Live sound card User Manual



### I. Product profile

Hello, dear customer. Thank you for buying our products.

Before formal use, please read the manual carefully to ensure the correct use of this product and the proper preservation of the manual for future use. This product is a professional singing live mixer, built-in digital DSP chip: support all live broadcast platform, support mixing switch, simple input mute control, reverberation melodies, text quality shouting wheat, special effect sound, TYPE-C computer connection, perfect to solve the diverse needs of mobile phone and computer live users!

### II. Packaging list host

Sound card	x1
Data line	x1
Dual Type-c OTG cable	x1
Product manual	x1

### III. System requirements

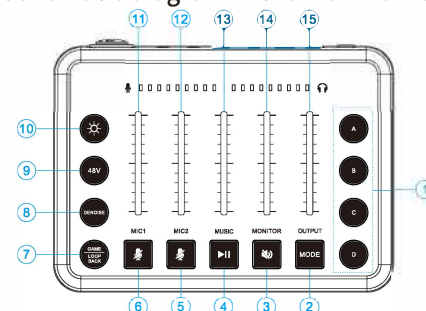
Android, IOS, Windows are fully compatible

### IV. Software support

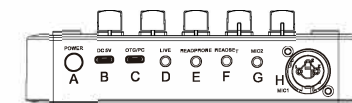
Sing APP: national Kou, cool I sing, KuGou music, Baidu music, sing bar, sing and so on.

Live broadcast APP: Reflecting guests, Pepper, YY, Douyu, The whole people TV, Kuaishou, TikTok, Tiger teeth and so on.

### V. Schematic diagram of the mainframe



1. custom: 4 custom sound effects buttons, long press to delete the prompt tone, the white light remains on during recording, and the light changes color before recording successfully. The recording duration is 10 seconds.
2. MODE: including original sound, KTV, male to female, female to male, Luoliyin, monstersound, short press to switch.
3. Auricular function: Turn on and off the sound of one's own speech in the ear, and the accompaniment and other person's music are normal. When closed, you can hear your own voice in the ear.
4. play/pause: Playing and pausing Bluetooth accompaniment.
5. MUTE: Mute microphone 2.
6. MUTE: Mute microphone 1.
7. GAME/LOOP BACK: People playing games in game mode: They cannot hear their own voice while listening, but they can hear their own gamesound.
8. DENOISE: Turn on to lower the microphone's reception.
9. 48V: Turn the 48V microphone function on or off.
10. Light switching: Short press to switch between different lighting effects.
11. MIC1: Adjusting the volume of microphone 1.
12. MIC2: Adjusting the volume of microphone 2.
13. MUSIC: Adjusting the volume of accompaniment.
14. MONITOR: Adjusting the listening volume.
15. OUTPUT: The volume in the live broadcast room has been adjusted, and the volume cannot be adjusted by self monitoring



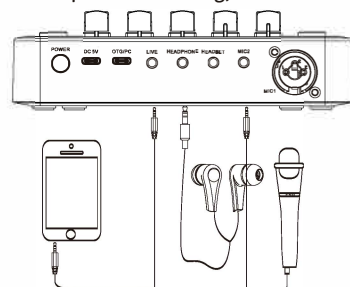
- A. Power button: Long press to turn on/off, the charging indicator light is red, the power on light is white, and the fully charged light is green. After turning on the device, the blue light flashes. Turn on the device and search for the Bluetooth name "F9" to connect. Once the connection is successful, the blue light will remain on for a long time. At this point, the Bluetooth accompaniment function can be used normally;
- B. Charging socket.
- C. OTG/computer jack.
- D. Live streaming socket.
- E. Headphone jack without microphone.
- F. Headphone jack.
- G. Microphone 2 socket.
- H. Microphone 1 base, supporting dynamic microphone 6.35 holes and 48V microphone large Cannon jack.

### VI. Specification parameters

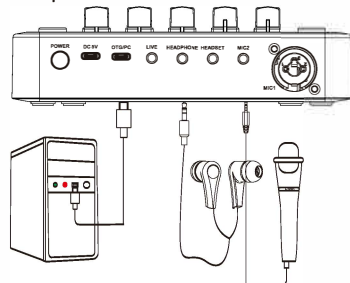
Specification parameter			
Channel system	Output sampling rate	Sampling bits	Use scene
Double channel	44.1KHZ	16bit	Home Outdoor
Weight	Push button	Button	Size
305g	5piece	13 piece	167*123*48MM
Indicator		USB and live interface	Audio interface
15 piece		Digital communication / charge / live accompaniment	Accompaniment, musical instrument, earphone, headset, condenser microphone
Main battery specification			
Capacity	Electricity consumption	Charging voltage	Charging current
1800mAh	220mA	DC 5V	1A

### VII. Seven, schematic diagram of the connection process

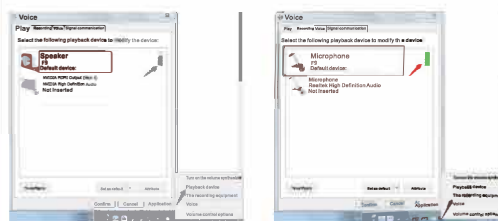
#### 1. Mobile phone recording, live broadcast



#### 2. Computer live broadcast



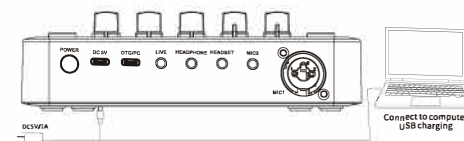
### VIII. Computer accompaniment and computer live debugging diagram



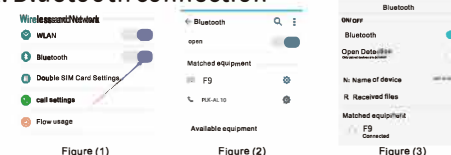
After the sound card is connected to the computer and the computer has recognized the sound card

- (1) connect the computer to the host computer with the Micro USB cable, click the small horn in the lower right corner of the computer, and right-click to open the "playback device". If the loudspeaker shows "F9" and is the default device, that is, the sound card driver has been installed successfully and has been recognized by the computer.
- (2) Computers or other devices that support OTG function and standard USB protocol all support connection with sound card.

### IX. Charging connection



### X. Bluetooth connection



1. Turn on the Bluetooth of the mobile phone, as shown in Figure (1);
2. The phone will automatically detect the available equipment around, as shown in Figure (2);
3. After the Bluetooth device "F9" is detected, click to start pairing, and it will be successful in about 10 seconds. The monitor earphone on the sound card will prompt "Bluetooth is connected", as shown in Figure (3), then you can select music Send to the sound card via Bluetooth as accompaniment music.

## FCC Warning

This device complies with part 15 of the FCC Rules. Operation is subject to the following two conditions: (1) This device may not cause harmful interference, and (2) this device must accept any interference received, including interference that may cause undesired operation.

Any Changes or modifications not expressly approved by the party responsible for compliance could void the user's authority to operate the equipment.

**Note:** This equipment has been tested and found to comply with the limits for a Class B digital device, pursuant to part 15 of the FCC Rules. These limits are designed to provide reasonable protection against harmful interference in a residential installation. This equipment generates uses and can radiate radio frequency energy and, if not installed and used in accordance with the instructions, may cause harmful interference to radio communications. However, there is no guarantee that interference will not occur in a particular installation. If this equipment does cause harmful interference to radio or television reception, which can be determined by turning the equipment off and on, the user is encouraged to try to correct the interference by one or more of the following measures:

- Reorient or relocate the receiving antenna.
- Increase the separation between the equipment and receiver.
- Connect the equipment into an outlet on a circuit different from that to which the receiver is connected.
- Consult the dealer or an experienced radio/TV technician for help.

This equipment complies with FCC radiation exposure limits set forth for an uncontrolled environment. This equipment should be installed and operated with minimum distance 20cm between the radiator & your body.