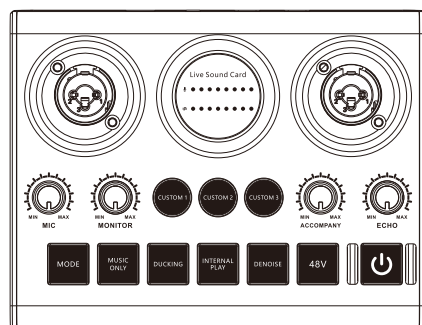


Live Sound Card User Manual



I. Product profile

Hello, dear customer. Thank you for buying our products.

Before formal use, please read the manual carefully to ensure the correct use of this product and the proper preservation of the manual for future use. This product is a professional singing live mixer, built-in digital DSP chip: support all live broadcast platform, support mixing switch, simple input mute control, reverberation melodies, text quality shouting wheat, special effect sound, TYPE-C computer connection, perfect to solve the diverse needs of mobile phone and computer live users!

II. Packaging list host

Sound card	x1
Data line	x1
Live line	x1
Double headed TYPE-C cable	x1
Product description product	x1

III. System requirements

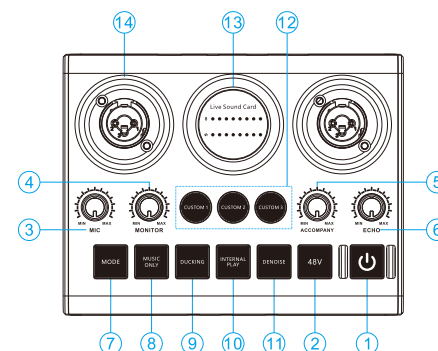
Android, IOS, Windows are fully compatible

IV. Software support

Sing APP: national Kou, cool I sing, KuGou music, Baidu music, sing bar, sing and so on.

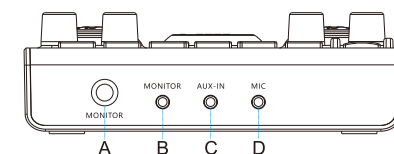
Live broadcast APP: Reflecting guests, Pepper, YY, Douyu, The whole people TV, Kuaishou, TikTok, Tiger teeth and so on.

V. Schematic diagram of the mainframe

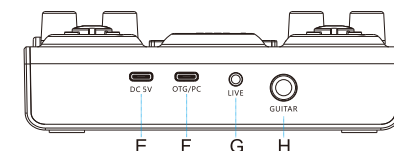


1. Power supply: Press the power key for three seconds to switch on, turn on the working indicator white.
2. 48V: 48V works when turned on, 48V does not work when turned off.
3. Mic: Adjust the volume of the microphone, and the indicator light of the microphone will change accordingly.
4. Monitor: Adjust the monitor volume, the monitor sound will change accordingly.
5. Accompaniment: Adjust the volume of the accompaniment, accompaniment indicator will change accordingly.
6. ECHO: Adjust the volume of the reverb, the reverb indicator will change accordingly.
7. MODE: Short press to switch between different preset modes.
8. MUSIC ONLY: When turned on, the vocals in the computer or external accompaniment and Bluetooth accompaniment will be eliminated, and when turned off, the vocals in the accompaniment will be retained; (requires a stereo source)
9. Ducking: When turned on, the vocals will be highlighted, and the sound of the music will become smaller. When turned off, the music and the vocals are balanced.
10. Internal play: When turned on, the sound played by the computer can be recorded back to the computer. When the computer is turned off, the sound played by the computer can only be monitored and cannot be recorded back to the computer.

11. Denoise: When the noise reduction function is turned on, the external noise is more obvious in the earphone, and there is no external noise when it is turned off.
12. Custom: Long press to record sound effects, short press to play.
13. Volume indicator light: Adjusting the volume indicator light will have corresponding changes.
14. Canon base 1: 48V microphone with XLR plug or dynamic microphone with 6.35mm plug can be connected.



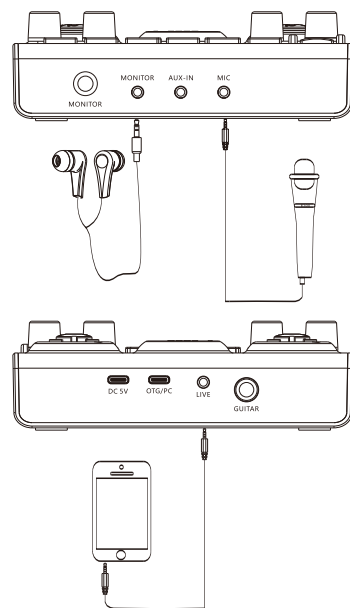
- A. MONITOR: Connect headphones with a 6.35mm plug.
B. MONITOR: Connect headphones with a 3.5mm plug.
C. AUX-IN: The accompaniment line connected to the 3.5mm plug.
D. MIC: Capacitor microphone connected to 3.5mm plug.



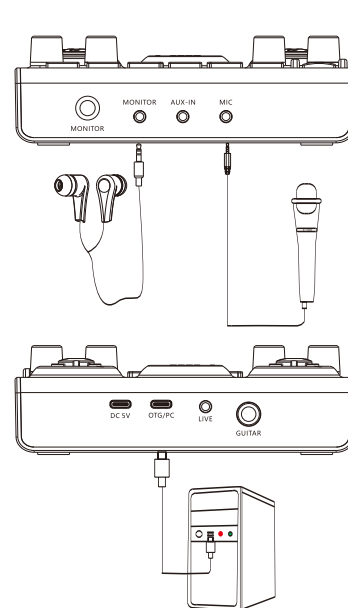
- E. DC 5V: This interface can charge the sound card.
F. OTG/PC: For live computer broadcast.
G. LIVE: Connect to mobile phone live broadcast, recording, singing.
H. GUITAR: Instrument connected to 6.35mm plug.

VI. Seven, schematic diagram of the connection process

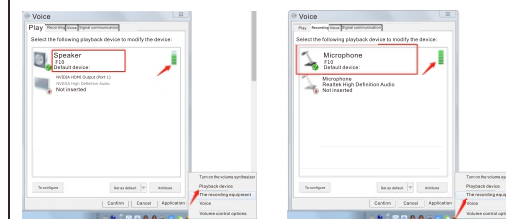
1. Mobile phone recording, live broadcast



2. Computer live broadcast



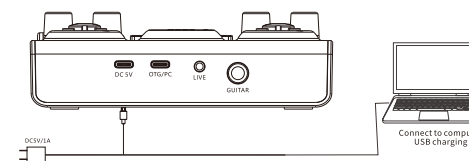
VII. Computer accompaniment and computer live debugging diagram



After the sound card is connected to the computer and the computer has recognized the sound card

- (1) connect the computer to the host computer with the Micro USB cable, click the small horn in the lower right corner of the computer, and right-click to open the "playback device". If the loudspeaker shows "F10" and is the default device, that is, the sound card driver has been installed successfully and has been recognized by the computer.
- (2) Computers or other devices that support OTG function and standard USB protocol all support connection with sound card.

VIII. Charging connection



FCC Warning

This device complies with part 15 of the FCC Rules. Operation is subject to the following two conditions: (1) This device may not cause harmful interference, and (2) this device must accept any interference received, including interference that may cause undesired operation.

Any Changes or modifications not expressly approved by the party responsible for compliance could void the user's authority to operate the equipment.

Note: This equipment has been tested and found to comply with the limits for a Class B digital device, pursuant to part 15 of the FCC Rules. These limits are designed to provide reasonable protection against harmful interference in a residential installation. This equipment generates uses and can radiate radio frequency energy and, if not installed and used in accordance with the instructions, may cause harmful interference to radio communications. However, there is no guarantee that interference will not occur in a particular installation. If this equipment does cause harmful interference to radio or television reception, which can be determined by turning the equipment off and on, the user is encouraged to try to correct the interference by one or more of the following measures:

- Reorient or relocate the receiving antenna.
- Increase the separation between the equipment and receiver.
- Connect the equipment into an outlet on a circuit different from that to which the receiver is connected.
- Consult the dealer or an experienced radio/TV technician for help.

This equipment complies with FCC radiation exposure limits set forth for an uncontrolled environment. This equipment should be installed and operated with minimum distance 20cm between the radiator & your body.