

# Wireless Adapter Instructions

## Contents

A. Instructions (for Windows 10, 8.1, 7).....	1
B. Manually install driver.....	2
C. Important: Not Connected.....	4
D.Warning .....	4
E.Contact us .....	5

### A. Instructions (for Windows 10, 8.1, 7)

- 1) Plug the adapter into USB ports.
- 2) Windows 10: waiting 10 seconds for Installing driver automatically. Windows 8 7: need to install driver manually
- 3) Press the pairing button on the Wireless Adapter 3 seconds (it starts to flash).
- 4) Press the pairing button on the top of the controller (the raised button).(Xbox button starts to fast flash).
- 5) Wait for pairing, LED keep light and don't flash: pair successfully!
- 6) Pair more controllers: Press the pairing button on the Wireless Adapter 1 second it starts to flash, repeat 4) and 5)

**Note: please use USB extension cable and move adapter away from the metal/router. Please update driver if adapter can't work. Please install Xbox accessories and update controller firmware for better gaming experience. Since windows are frequently updated, please try to use different PC if adapter can't work, you may need to download a driver or update system in the PC that doesn't works with adapter.**

## B. Manually install driver

Try to update driver maybe resolve everything.

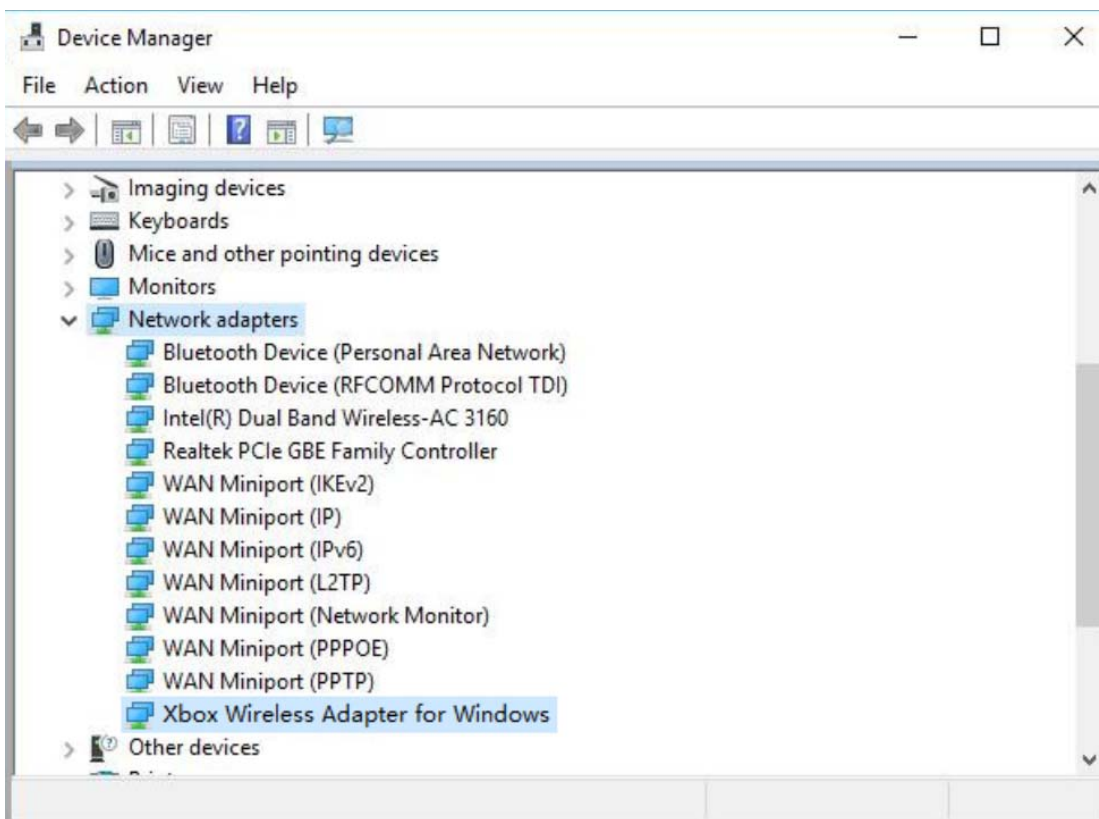
1. Go to **Microsoft catalog update** website, search "Xbox Wireless" in search box. Find the version file corresponding to your windows (a driver that does not match your windows will cause adapter to not work), downloaded file to a memorable folder. The windows 10 driver title: "Microsoft - Other hardware - Xbox Wireless Adapter for Windows"

Search results for "Xbox wireless adapter"

Updates: 1 - 20 of 20 (page 1 of 1)

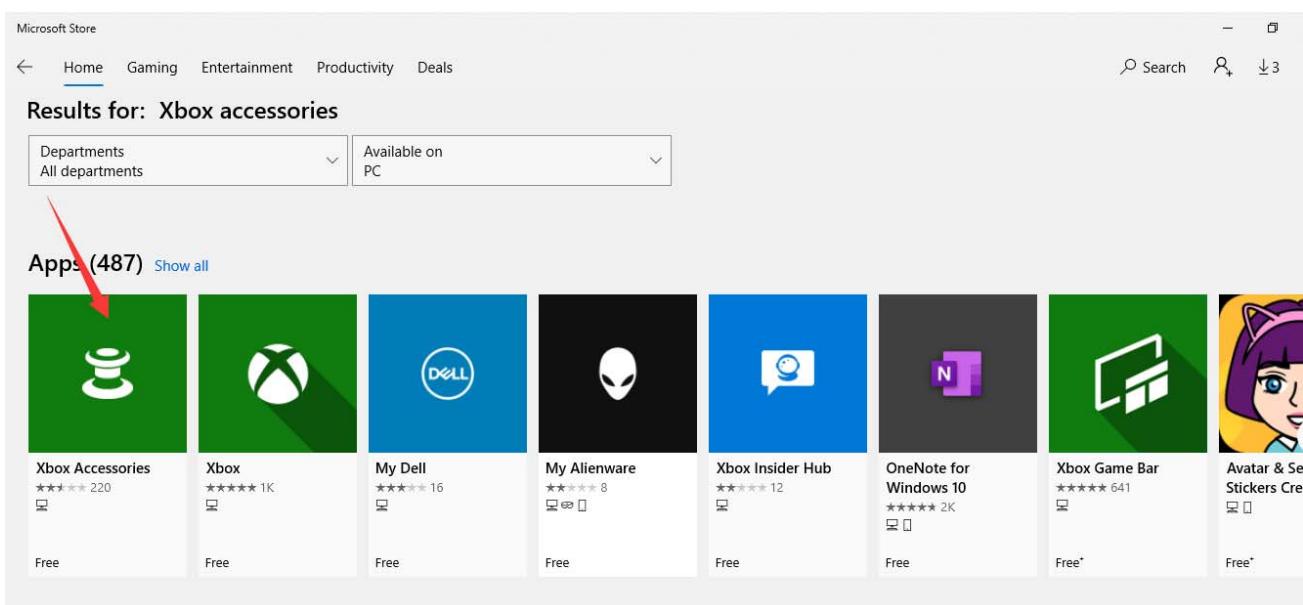
Title	Products	Classification	Last Updated	Version	Size	
Microsoft driver update for Xbox Wireless Adapter for Windows	Windows 10 and later drivers, Windows 10 and later upgrade & servicing drivers	Drivers (Networking)	2016/5/2	18.31.1.43	228 KB	<a href="#">Download</a>
Microsoft - Other hardware - Xbox Wireless Adapter for Windows	Windows 10 and later drivers	Drivers (Networking)	2015/12/7	21.50.45.656	212 KB	<a href="#">Download</a>
Microsoft - Other hardware - Xbox Wireless Adapter for Windows	Windows 10 and later drivers, Windows 10 and Later Servicing Drivers for testing	Drivers (Networking)	2015/12/7	19.34.19.259	189 KB	<a href="#">Download</a>
Microsoft - Other hardware - Xbox Wireless Adapter for Windows	Windows 10 and later drivers	Drivers (Networking)	2015/8/25	19.29.20.953	215 KB	<a href="#">Download</a>
Xbox - Net - 7/18/2018 12:00:00 AM - 1.0.45.5	Windows 10 and later drivers, Windows 10 and later upgrade & servicing drivers, Windows 10 S and Later	Drivers (Networking)	2018/7/17	1.0.45.5	225 KB	<a href="#">Download</a>
Xbox - Net - 7/11/2017 12:00:00 AM - 1.0.46.1	Windows 10 Creators Update and Later Servicing Drivers, Windows 10 S and Later Servicing Drivers	Drivers (Networking)	2017/7/10	1.0.46.1	195 KB	<a href="#">Download</a>
Xbox - Net - 7/11/2017 12:00:00 AM - 1.0.46.1	Windows 10 Anniversary Update and Later Servicing Drivers, Windows 10 S and Later Servicing Drivers	Drivers (Networking)	2017/7/10	1.0.46.1	217 KB	<a href="#">Download</a>
Xbox - Net - 7/11/2017 12:00:00 AM - 1.0.46.1	Windows 10 Creators Update and Later Servicing Drivers, Windows 10 S and Later Servicing Drivers	Drivers (Networking)	2017/7/10	1.0.46.1	217 KB	<a href="#">Download</a>
Xbox - Net - 6/21/2017 12:00:00 AM - 1.0.45.4	Windows 10 S Version 1803 and Later Servicing Drivers, Windows 10 S Version 1803 and Later Upgrade & Servicing Drivers	Drivers (Networking)	2017/6/20	1.0.45.4	221 KB	<a href="#">Download</a>
Xbox - Net - 1.0.45.4	Windows 10, version 1903 and later, Servicing Drivers, Windows 10, version 1903 and later, Upgrade & Servicing Drivers	Drivers (Networking)	2017/6/20	1.0.45.4	437 KB	<a href="#">Download</a>
Xbox - Net - 5/14/2017 12:00:00 AM - 1.0.45.1	Windows 10 Creators Update and Later Servicing Drivers, Windows 10 Creators Update and Later Upgrade & Servicing Drivers	Drivers (Networking)	2017/5/13	1.0.45.1	221 KB	<a href="#">Download</a>
Microsoft - Net - 4/1/2017 12:00:00 AM - 1.0.45.0	Windows 10 Anniversary Update and Later Servicing Drivers, Windows 10 Anniversary Update and Later Upgrade & Servicing Drivers	Drivers (Networking)	2017/3/31	1.0.45.0	220 KB	<a href="#">Download</a>
Microsoft - Net - 5/3/2016 12:00:00 AM - 18.31.1.43	Windows 10 and later drivers, Windows 10 and later upgrade & servicing drivers	Drivers (Networking)	2016/5/2	18.31.1.43	225 KB	<a href="#">Download</a>
Microsoft - Net - 11/30/2015 12:00:00 AM - 21.50.45.656	Windows 10 Anniversary Update and Later Servicing Drivers, Windows 10 S and Later Servicing Drivers	Drivers (Networking)	2015/11/29	21.50.45.656	211 KB	<a href="#">Download</a>
Microsoft - Net - 8/26/2015 12:00:00 AM - 19.16.17.976	Windows 10 and later drivers, Windows 10 and Later Servicing Drivers for testing	Drivers (Networking)	2015/8/25	19.16.17.976	190 KB	<a href="#">Download</a>
Microsoft - Net - 1/1/2015 12:00:00 AM - 6.3.9600.16384	Windows 7, Windows 8.1 Drivers	Drivers (Networking)	2014/12/31	6.3.9600.16384	1.8 MB	<a href="#">Download</a>
Microsoft - Net - 1/1/2015 12:00:00 AM - 6.3.9600.16384	Windows 7, Windows 8.1 Drivers	Drivers (Networking)	2014/12/31	6.3.9600.16384	1.7 MB	<a href="#">Download</a>

2. Click Start, type Device Manager, and press Enter. Left click Network adapters, Right click "Xbox Wireless Adapter for Windows" and choose "Update Driver." Select "Browse my computer for driver software." Browse for the folder that you extracted the driver to in step 1. Then choose next.



3. After successful driver update, reboot computer. Press the pairing button on the Wireless Adapter 3 seconds, which should now start slowly blinking. Hold down button on your XB wireless controller for syncing, and two should link up .

4. Click Start, open "Microsoft store", install " Xbox Accessories" in Microsoft store. Go to setting of xbox accessories then update controller firmware.



### C. Important: Not Connected

Adapter LED didn't light up after pressing button 3 seconds	1. USB port is no power or loose contact, try plug into other USB port or use USB extension cable.
	2. Didn't install driver successfully, uninstall and install driver again.
	3. Adapter is broken by accident, contact with us for replacement or refund.
Adapter LED light up but can't connect controllers or headset.	1. Turn off Xbox or any other devices that has connected headset and controllers already.
	2. Wireless headset must be 2.4G signal and design for Xbox. 360 controller and universal wireless headset can't to connect
	3. Update controller firmware in xbox console or xbox accessories app on PC
Disconnect randomly	1. Move it away from the metal/TV/router, connect it to USB extension cable.
	2. Battery no power
One year replacement or refund warranty	
If you have any questions, please feel free to contact us (Email: <b>fooao_service@163.com</b> )	

### D.Warning

This device complies with Part 15 of the FCC Rules. Operation is subject to the following two conditions: (1) this device may not cause harmful interference, and (2) this device must accept any interference received, including interference that may cause undesired operation.

Changes or modifications not expressly approved by the party responsible for compliance could void the user's authority to operate the equipment.

NOTE: This equipment has been tested and found to comply with the limits for a Class B digital device, pursuant

to Part 15 of the FCC Rules. These limits are designed to provide reasonable protection against harmful interference in a residential installation. This equipment generates uses and can radiate radio frequency energy and, if not installed and used in accordance with the instructions, may cause harmful interference to radio communications. However, there is no guarantee that interference will not occur in a particular installation. If this equipment does cause harmful interference to radio or television reception, which can be determined by turning the equipment off and on, the user is encouraged to try to correct the interference by one or more of the following measures:

- Reorient or relocate the receiving antenna.
- Increase the separation between the equipment and receiver.
- Connect the equipment into an outlet on a circuit different from that to which the receiver is connected.
- Consult the dealer or an experienced radio/TV technician for help.

NOTE: This device and its antenna(s) must not be co-located or operation in conjunction with any other antenna or transmitter

The device has been evaluated to meet general RF exposure requirement.

## E.Contact us

Please email us if you can't make the adapter to works (**Email: [fooao\\_service@163.com](mailto:fooao_service@163.com)**)