



供应商: 深圳市力影佳摄影器材有限公司

MANUFACTURER: SHENZHEN LYNCA PHOTOGRAPHIC EQUIPMENT CO.,LTD

官网/Web: www.lensgo-ok.com

电话/Service Hotline: 400-9696-082

地址: 深圳市龙岗区平湖街道新木新园工业区12号巧依大厦3楼

Add:3/F,Building Qiaonong,No.12 XinmuXinyuan industrial park,Pinghu Street,Longgang district,Shenzhen,Guangdong,China

## INSTRUCTION

### MANUAL 使用说明书

### 取扱説明書



**348C** 无线麦克风  
ワイヤレスマイク Wireless Microphone

## 目录:

|                                   |       |
|-----------------------------------|-------|
| FCC Statement                     | 1     |
| 348C suit List Introduction       | 2     |
| Transmitter Function introduction | 3-4   |
| Receiver Function introduction    | 5-6   |
| Power On/Power Off                | 7     |
| Card Recording                    | 8     |
| Manual Channel Pairing            | 9     |
| S stereo sound/M Mixing Function  | 10    |
| Connect Phone/Camera              | 11    |
| Connect To Laptop/Desktop         | 12    |
| How To Use The Collar Clip        | 13    |
| TYPE-C Charging Connection        | 14-15 |
| Troubleshooting                   | 16-17 |
| Transmitter Parameters            | 18-19 |
| Receiver Parameters               | 19-20 |

348C uses 2.4G wireless microphone system, one-key operation, high-quality sound and stable performance. This product is suitable for various wireless applications such as interviews, news interviews (ENG), audio field production (EFP), film production, business and education and other application scenarios.

## Features

1. 2.4G wireless frequency, more widely used
2. Support stereo and mono mode switching
3. Built-in omnidirectional radio and television mic
4. Magnetic assembly method, convenient disassembly and assembly, multiple usage methods
5. The operating range is up to 70 meters (face to face in an open environment, the recommended range is 30 meters)
6. The built-in lithium battery is charged by TYPE-C charging interface/box (there is no battery inside, it needs to be used with a charger)
7. Built-in TF card slot to prevent missing recording, maximum support 32G TF card
8. Transmitter (TX) one-button recording
9. Receiver (RX) hidden TFT screen

## FCC Statement:

This device complies with Part 15 of the FCC Rules.

The operation meets the following two conditions:

- (1) This device will not cause harmful interference.
- (2) This device must accept any interference received, including interference that may cause unexpected operation.

Warning: Only qualified maintenance personnel can install or repair this equipment.

Note: This device has been tested and complies with the requirements of Part 15 of the FCC Rules for Class B digital devices.

These limits are designed to provide reasonable protection against harmful interference in residential installations. This device generates radio frequency radiation, if it is not installed and used in accordance with the instructions, it may cause interference to radio communications.

However, there is no guarantee that interference will not occur in a particular installation. If this device does cause interference to radio or television reception (by Turn off and turn on the device to confirm), it is recommended that the user try to correct the interference by one or more of the following measures:

1. Re-adjust or reposition the receiving antenna.
2. Increase the distance between the interfered device and the receiver.
3. Adjust the interfered device to a frequency band different from the radio wave of the receiver.
4. Please consult the dealer or an experienced radio/TV technician for help.

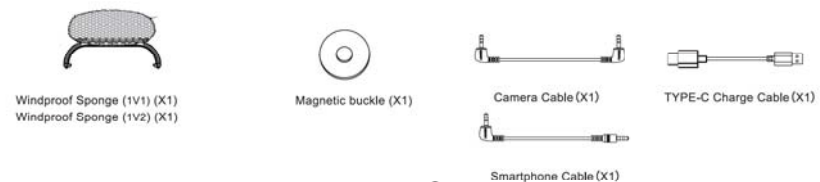
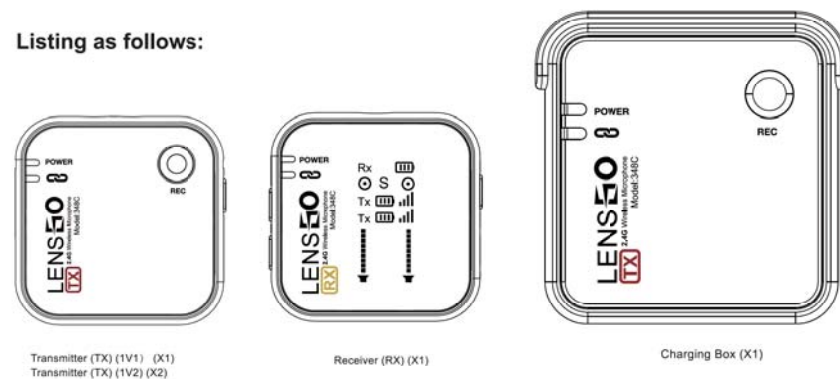
1

## Receiver (RX)

348C 1V1 of a transmitter (TX) and a receiver (RX) and its accessories

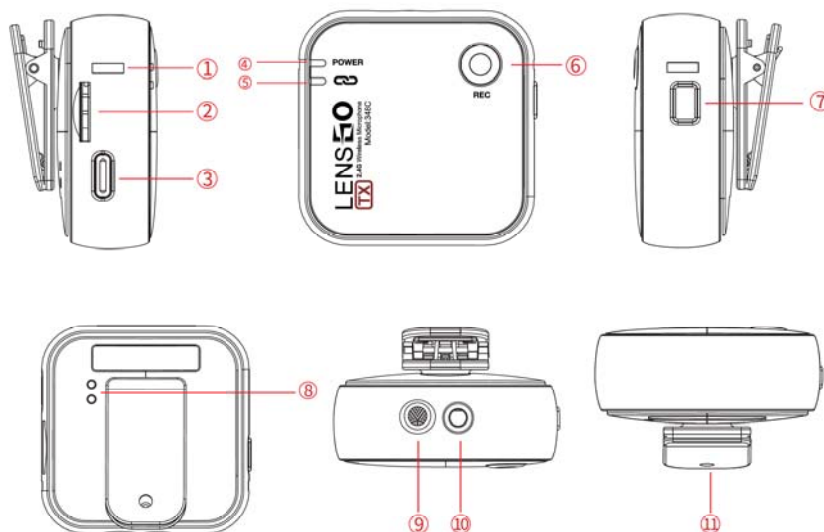
348C 1V2 of two transmitters (TX) and one receiver (RX) and its accessories

Listing as follows:



2

## Transmitter (TX)



3

### 1. Windproof sponge hanging button hole

### 2. TF Card slot

Maximum Support 32GB

### 3. TYPE-C Charging Interface

### 4. Power Indicator

The blue light is always on for power indication, and the red light is flashing for low power indication

### 5. Signal indicator

When the signal indicator is green, it means pairing is successful

### 6. Recording button/recording indicator

Start recording: Insert the TF card into the device card slot, and lightly press the REC button for three second. At this time, the red light flashes to indicate that the recording is turned on, and the RX device displays The red light flashes in the display; turn off the recording: when the recording is turned on, press the REC key for three second while the red light is flashing, and the red light is off, indicating The recording function is turned off. The red color disappears in the display of the RX device. When there is no TF card in the TX device, press the REC button, and the red light will be steady on

### 7. Power button

**Power on and off:** press the power button for 1 second to turn on, long press for 1 seconds to turn off  
**Mute:** Press the power button for one second after powering on to start the mute mode. At this time, the blue light of the TX device will flash, and the RX device will display quiet mute symbol

### 8. Box charging hole

### 9. Microphone

### 10. External microphone jack

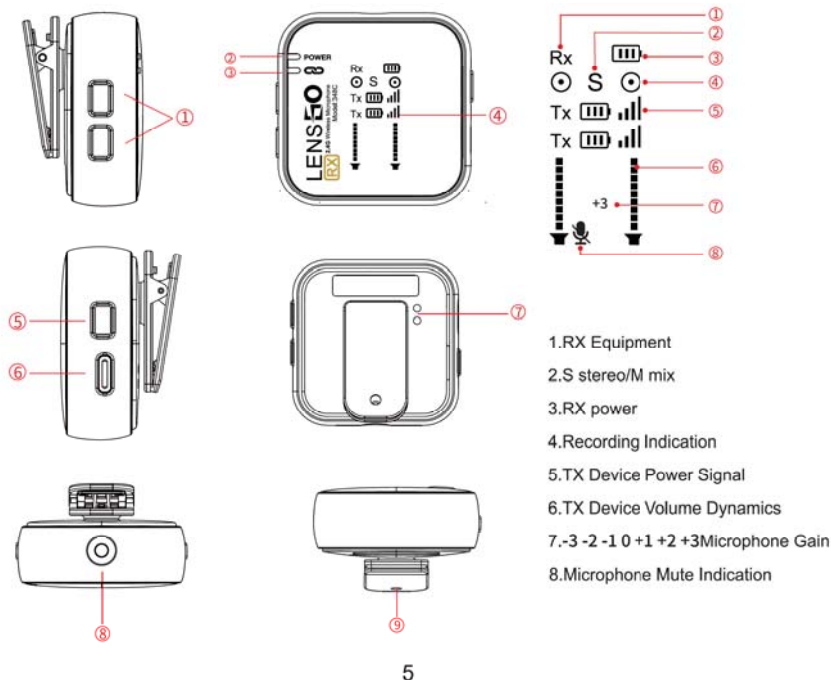
Insert an external microphone here to replace the transmitter source microphone for recording.

### 11. Removable magnetic cold shoe clip

The cold shoe latch is a hot shoe latch for common recording equipment/recording accessories on the market.

4

## Receiver (RX)



5

## 1. Volume +/- button

+button microphone gain increase +3 total three gears, -button microphone gain decrease -3 total three gears  
Press and hold the +/- button at the same time to switch between S stereo sound/M mixing mode

## 2. Power Indicator

The blue light is always on for power indication, and the red light is flashing for low power indication

## 3. Signal indicator

When the signal indicator is green, it means pairing is successful

## 4. Hidden TFT screen

## 5. Power button

Power on and off: press the power button for 1 second to turn on, long press for 3 seconds to turn off

## 6. TYPE-C charging interface

## 7. Boxed charging hole

## 8. Signal output hole

## 9. Removable magnetic cold shoe clip

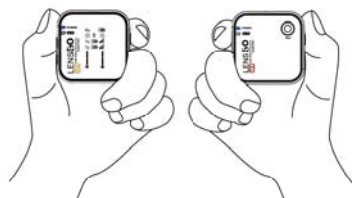
The cold shoe latch is a hot shoe latch for common recording equipment/recording accessories on the market.

6

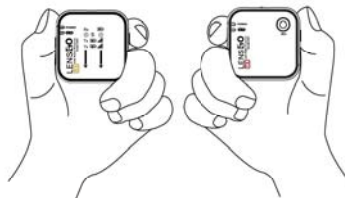
## Power on/Power off

1. Turn on the power, press the function button once, the indicator light turns blue, it means successful turn-on. (Please charge the device when it does not turn on when you press the function button of the device)
2. Turn off the power, press and hold the function button, when the indicator light is off, it means the boot is successful.

### ① Power On



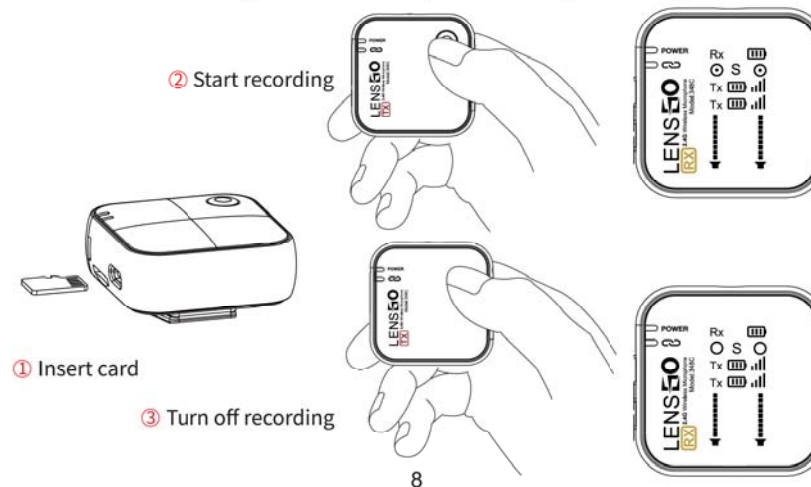
### ② Power Off



7

## Card recording

Start recording: insert the TF card below 32G into the card slot of the device, gently press the REC key for 3 seconds, and then the red light flashes Indicates to start recording and red flashes in the display of RX device; Close recording: the red light of REC button flashes when recording is started Long press the REC key for 3 seconds, and the red light will be off, indicating that the recording function has been turned off. The red color will disappear in the display of the RX device. If there is no TF card inserted in the TX device, press the REC key and the red light will always be on



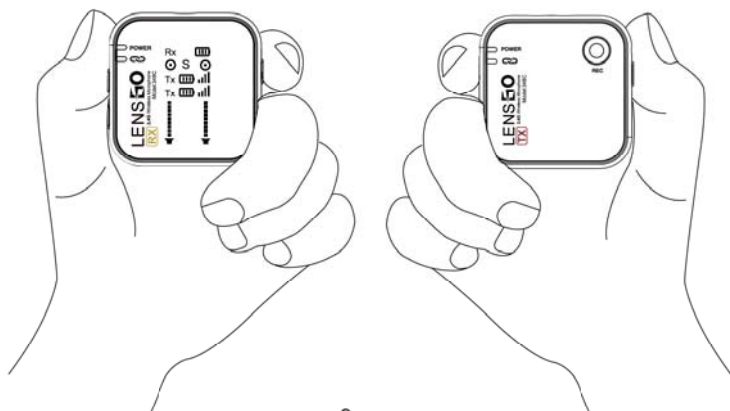
8



## Manual Channel Pairing

**1V1 code pairing:** when the power is off, press the TX power button for 8 seconds to enter the code pairing state, at this time the green signal light will flash quickly, and then press the power button for 8 seconds when the receiver (RX) is off. At this time the green signal light will quickly flash, it means that the system is pairing. When the green signal lights of TX and RX are always on, it means that the pairing is successful. The interface will display the TX power.

**1V2 code pairing:** After one is successfully paired, turn off the paired TX and RX at the same time, and then press the power buttons of TX and RX which are needed to be paired at the same time for 8 seconds, at this time the green signal lights of TX and RX will flash quickly, indicates that the pairing is successful, and the RX interface will display the power of TX. Return-on the TX. At this time, two groups of TX messages will be displayed on the screen to indicate successful pairing.



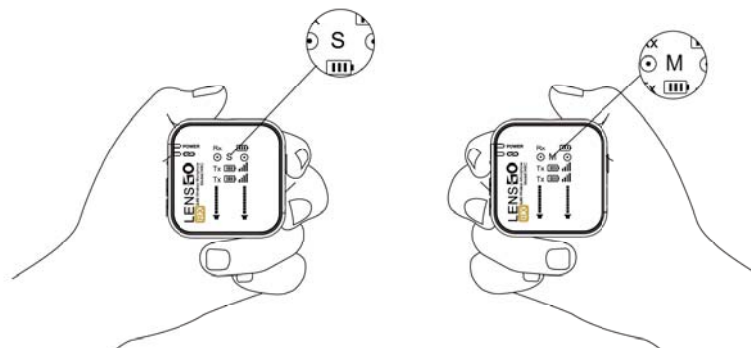
9

## S Stereo Sound/M Mixing Function

Press the +/- button at the same time to switch between S stereo sound/M mixing mode

When the device is one for one, please use the M mixing mode,

When the device is one for two, you can freely switch to use



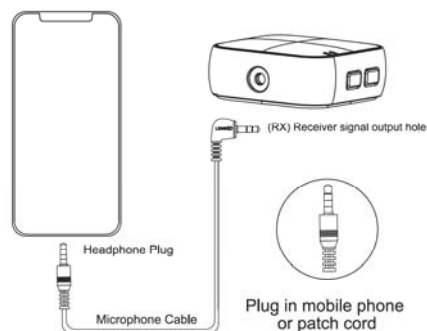
S Stereo Sound Mode

M Mixing Mode

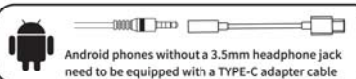
10

## Connect Phone/Camera

### ① Connect to smartphone

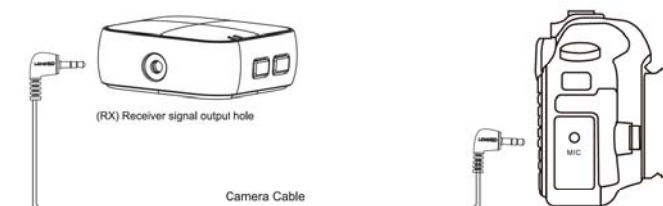


### Adapter Cable With Video Call



Note: Apple phones support original camera recording, Android phones need third Fang camera recording, with OTG function can use mobile phone original equipment

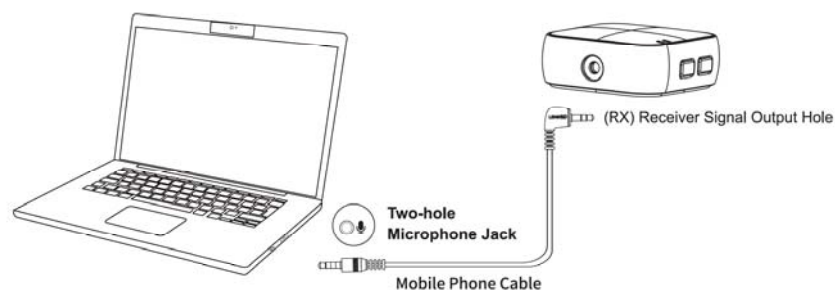
### ② Connect digital SLR cameras, camcorders, voice recorders



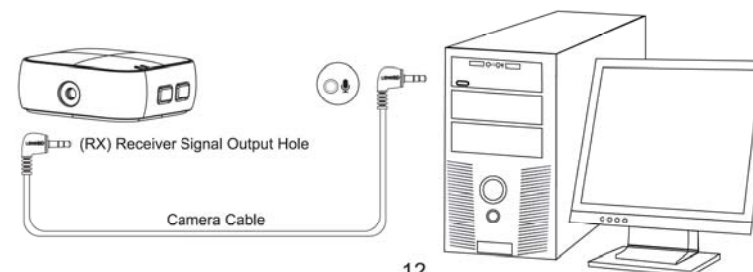
11

## Connect To Laptop/Desktop

### ① Connect Notebook



### ② Connect To Desktop

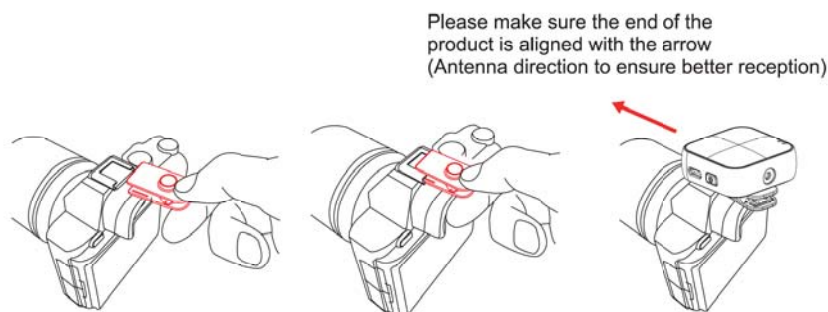


12

## How to use the collar clip

The collar clip can be used as a cold shoe latch.

1. Align the collar splint at the hot shoe port of the recording device or recording accessory, and insert it into the hot shoe port (the splint pin is commonly used in most hot shoe ports on the market).
2. After the concave position of the receiver magnet matches the convex position of the collar clip magnet, it can be plugged in and used.

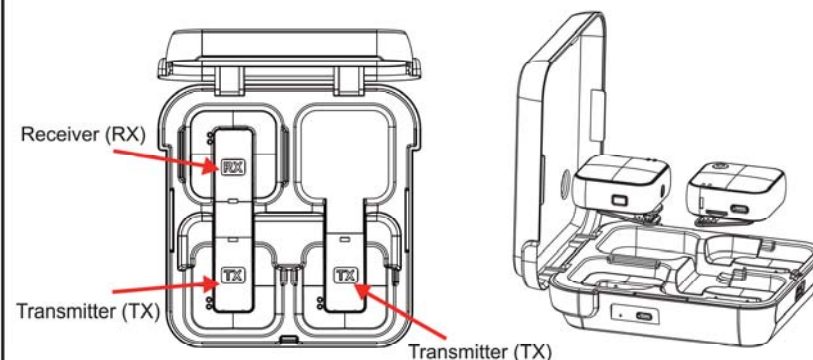


13

## Connect the charging box to charge

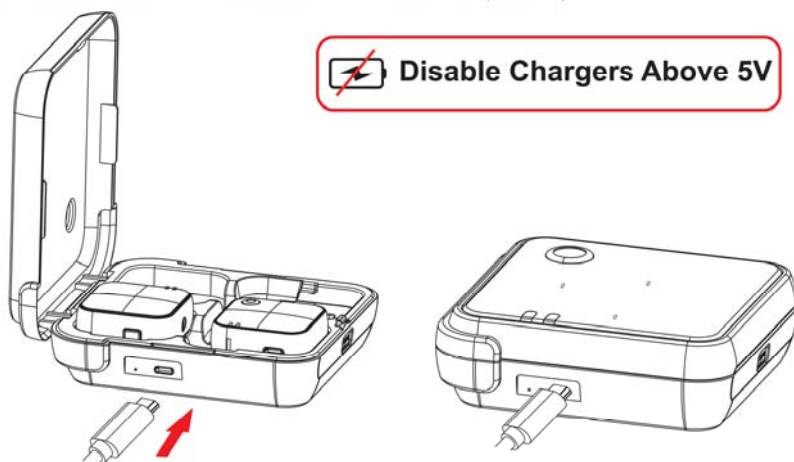
Please turn off the device before charging

1. Press the "PUSH" button to open the charging box
2. Put TX and RX into the charging box separately (please note that the probe should correspond to the pinhole of TX and RX, otherwise you cannot insert it)
3. Insert the TYPE-C charging cable, when the red indicator light of TX, RX flashes, it means it is charging



14

4. When the product is fully charged, the red light is always on, indicating that the product is fully charged
  5. After charging is completed, please unplug the TYPE-C charging cable
  6. Close the charging box
- (Note: If the rechargeable indicator light shows other colors, please press the function button for 2 seconds to shut down the product)



**Note: The box is unchargeable and needs to be used with a charger**

15

## Troubleshooting

If you encounter any problems with the 348C components, please use the following checklist.

If you still have problems, please consult your local dealer or contact us.

| Status                                | The Reason   |
|---------------------------------------|--|
| Can not boot                          | The battery is dead, please charge the device.   |
| Output to device<br>No sound          | <ol style="list-style-type: none"> <li>1. Whether the pairing is successful</li> <li>2. The pairing is successful, there is no sound, speak into the TX microphone, check the RX reception Is there volume dynamics on the display</li> <li>3. Change the phone line/camera line to confirm whether it is normal</li> <li>4. Check whether the TX is muted, and observe whether the RX screen and the TX blue light flash</li> </ol> |
| Too Many Ambient Sounds Are Picked Up | <ol style="list-style-type: none"> <li>1. Make sure the microphone is as close as possible to the subject</li> <li>2. Adjust the camera volume to 5 positions</li> <li>3. RX volume adjustment</li> <li>4. Wear Windproof Sponge</li> </ol>  |

16

## Troubleshooting

| Status  | The Reason  |
|---|---|
| Noisy or distortion,<br>Including electric<br>current,<br>Noise floor,<br>Boom etc. | Signal is disturbed<br>1. Try to record indoors, there is less radio frequency interference indoors.<br>2. Keep the transmitter and receiver away from conductive objects such as metal and water.<br>3. Overhead telephone lines, fluorescent lights and metal fences will all cause interference to the wireless microphone.<br>4. Turn off all computers and mobile phones nearby. |
|   | Weak RF signal<br>1. Ensure that the line of sight between the transmitter and receiver antennas is unobstructed.<br>2. Your body, clothes and stage scenery may cause obstacles.<br>3. Make sure the transmitter is within 50 meters of the receiver.<br>4. If there are obstacles, you may need to shorten the distance between the transmitter and the receiver.                   |
|   | The input level of the camera, video recorder or mixer is too high.<br>Turn down the camera or record The audio input level of the device<br>Reduce the audio output level on the receiver. Turn down The gain of the mixer. If there is no adjustment or setting function on the device, and the level Still high, you can adjust the output signal by adjusting the +/- key of RX.  |

17

## Transmitter Parameters

|                       |   |
|-----------------------|---|
| Maximum SPL           | Built-in microphone: 120dB SPL  |
| Sensitivity           | -38dB+/-2dB   |
| Signal to noise ratio | 90dB  |
| RF input level        | -32~-dBv  |
| Battery requirements  | Built-in lithium battery power supply / charging box contact charging / TYPE-C 5V charging port |
| Other functions       | Recording function TFT HD display   |
| Built-in battery life | About 7 hours <small>4H when recording mode is on, 7H when recording mode is not on</small>     |
| Antenna               | FPC   |
| Audio input source    | 3.5mm microphone, built-in microphone   |
| Size                  | 48*48mm   |
| Weight                | 40g   |
| Operating temperature | 0°C~50°C  |
| Storage temperature   | -20°C~+55°C   |

18

|                           |   |
|---------------------------|---|
| Input frequency range     | 40KHz-15KHz                                       |
| RF output power           | 12dBm   |
| Total harmonic distortion | 0.03%   |
| Voltage                   | 3.7V 400mAh                                       |
| Power Consumption         | TX unopened recording 180mW, open recording 440mW |

## Receiver Parameters

|                    |  |
|--------------------|--|
| Use frequency band | 2.4GHz digital frequency band  |
| Signal modulation  | Gaussian frequency shift button  |
| Operating range    | Up to 70 meters (unobstacles)  |
| Audio output port  | 3.5mm interface  |
| Type of battery    | Built-in lithium battery power supply / charging box contact charging / TYPE-C 5V charging interface |

19

|                           |               |
|---------------------------|---------------|
| Built-in battery life     | About 8 hours |
| Antenna                   | FPC           |
| Weight                    | 48*48mm       |
| Size                      | 40g           |
| Operating temperature     | 0°C~50°C      |
| Storage temperature       | -20°C~+55°C   |
| Total harmonic distortion | 0.03%         |
| Signal to noise ratio     | 90dB          |
| Voltage                   | 3.7V 400mAh   |
| Power Consumption         | 280mW         |

20