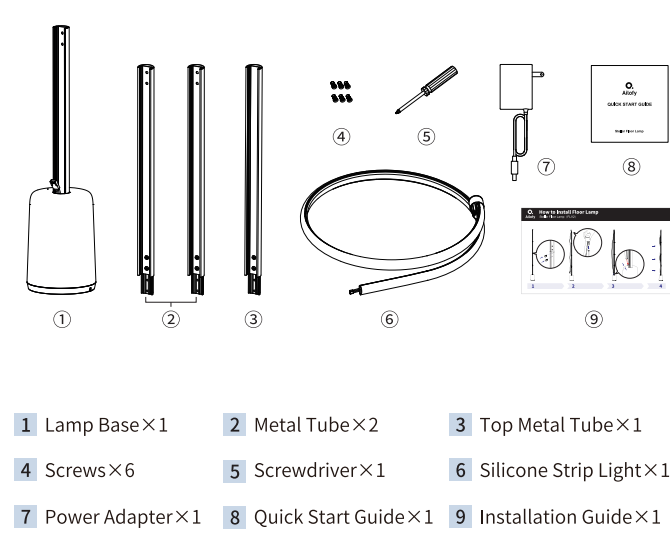
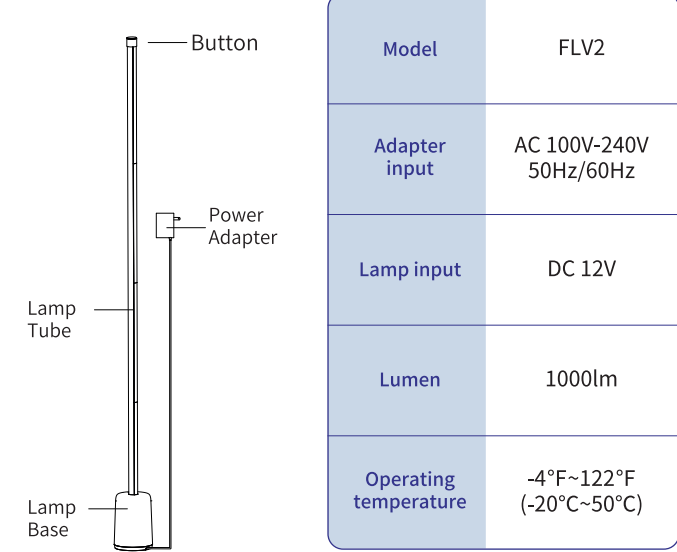


What's in the Box



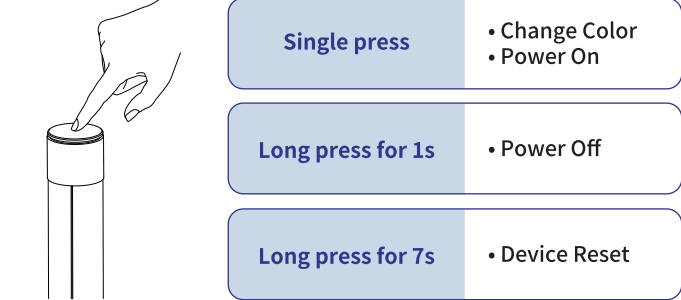
2

Specification



3

Basic Operation



Status Indicator

Light	Flashing Blue	Solid Yellow
Status	In pairing mode	Pairing successful

4

Getting Started

- ◆ Download the Ailofy app and sign in or create an account.
- ◆ Follow the instructions in the Ailofy app to set up.
- ◆ Open the Ailofy app and tap the + sign on the top right corner of the My Home tab. Tap **Add Device** and then select **Stellar Floor Lamp**.

Note:
★ This device only supports the 2.4GHz and 802.11 b/g/n bands. 5GHz is not supported.



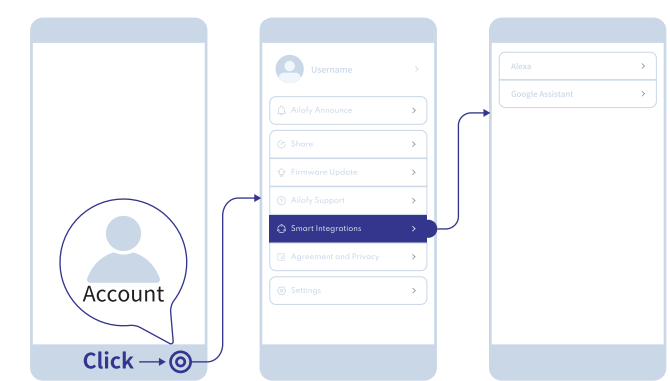
5

Need Help

- ✉ Service Email: support@ailofy.com
- 🌐 Service URL: www.ailofy.com

Connecting To Your Voice Assistant

- ◆ Open the app and tap the “Account” button at the bottom.
- ◆ Select “Smart Integrations”.
- ◆ Choose “Alexa” or “Google Assistant” and follow the on-screen instructions to control the device using your voice.



6

FAQ

Q1: Unable to Connect to Wi-Fi

1. Verify that the light is powered on.
2. Ensure your Wi-Fi router supports 2.4GHz (5GHz is not supported).
3. Confirm that the correct Wi-Fi password was entered during setup.
4. Reduce the distance between the device and the Wi-Fi router, then try reconnecting.
5. Use another smartphone to create a mobile hotspot and connect the device to this network to check if your Wi-Fi is functioning properly.

Q2: If the Device Cannot Connect to the App

Please press and hold the top button for 7 seconds until the blue light on the strip flashes. This will reset the device to pairing mode. Then try reconnecting.

Q3: The Light Strip is Not Working Properly

Please contact the Ailofy support team for a prompt product replacement.

7

FCC Warning

Any changes or modifications not expressly approved by the party responsible for compliance could void the user's authority to operate the equipment. This device complies with Part 15 of the FCC Rules. Operation is subject to the following two conditions: (1) This device may not cause harmful interference, and (2) This device must accept any interference received, including interference that may cause undesired operation.

This equipment has been tested and found to comply with the limits for a Class B digital device, pursuant to Part 15 of the FCC Rules. These limits are designed to provide reasonable protection against harmful interference in a residential installation. This equipment generates uses and can radiate radio frequency energy and, if not installed and used in accordance with the instructions, may cause harmful interference to radio communications. However, there is no guarantee that interference will not occur in a particular installation. If this equipment does cause harmful interference to radio or television reception, which can be determined by turning the equipment off and on, the user is encouraged to try to correct the interference by one of the following measures:

- Reorient or relocate the receiving antenna.

8

- Increase the separation between the equipment and receiver.
- Connect the equipment into an outlet on a circuit different from that to which receiver is connected.
- Consult the dealer or an experienced radio/TV technician for help.

Rf Radiation Exposure Statement

- This equipment complies with FCC radiation exposure limits set forth for an uncontrolled environment.
- Operated with minimum distance of 20 cm between the radiator and your body.

Cautions

- Avoid exposure to water.
- Do not disassemble this product without authorization if the lamp is broken.
- Children are not allowed to install this product alone.
- Avoid placing this product near heat sources.

9



QUICK START GUIDE

Stellar Floor Lamp