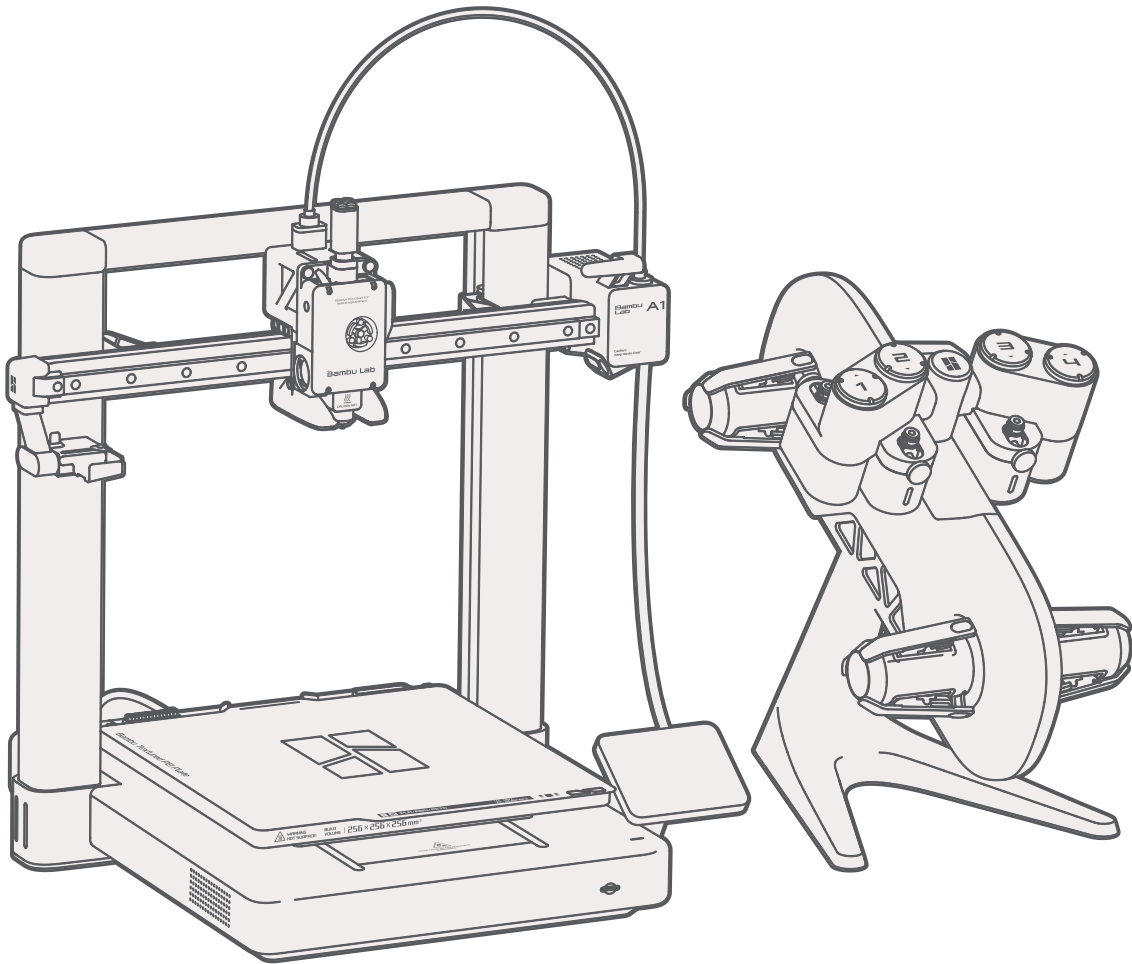


Bambu Lab A1 with AMS Lite

Quick Start

Please review the entire guide before operating the printer.

* Safety Notice: Do not connect to power until assembly is complete.



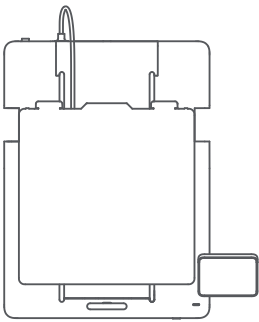
PF002-A

SA005

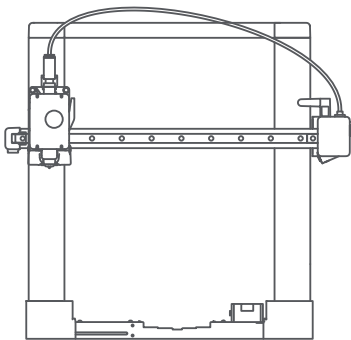


Bambu Studio & Bambu Handy
<https://bambulab.com/download>

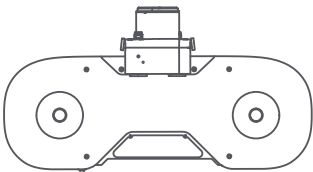
What's In The Box



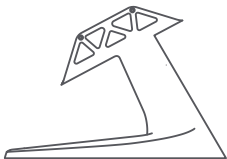
A1 Base Housing



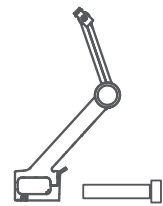
A1 Printer Frame



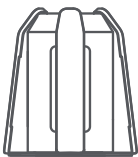
AMS lite Body



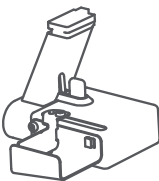
AMS lite Stand



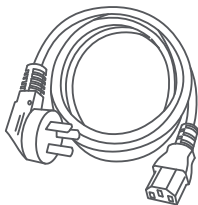
Spool Holder



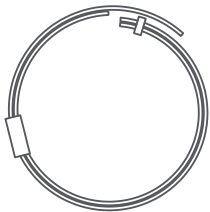
AMS lite Rotary
Spool Holder
(x4)



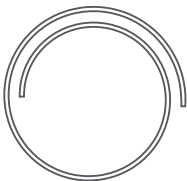
Purge Wiper



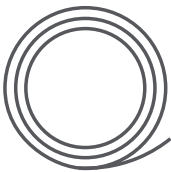
Power Cable



PTFE Tubes
For AMS lite



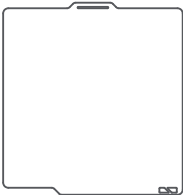
600mm
PTFE Tube



Sample
Filament



Accessory Box

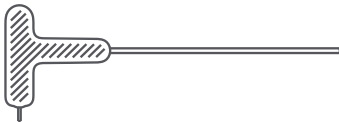


Build Plate

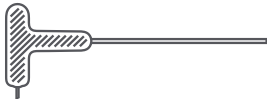
Accessory Box



Unclogging Pin Tool



Allen Key H2



Allen Key H1.5



Heatbed Nozzle Wiper



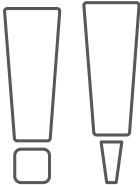
Cable Organizer



Bambu
Scraper Blade



Spare Filament
Cutter (×2)



Grease & Oil



BT2.6-8 Screw (×2)
(For Scraper)



BT3-6 Screw (×5)
(For AMS Stand)

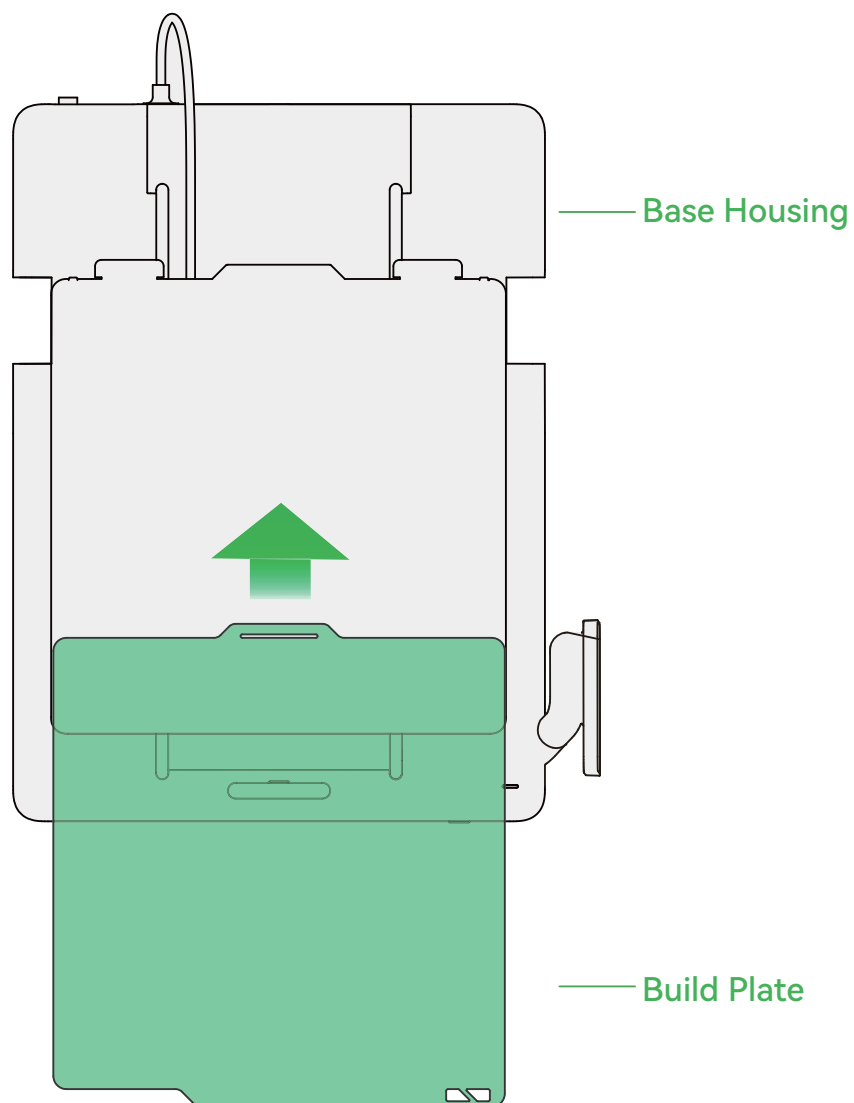


M3-12 Screw (×1)
(For Purge Wiper)



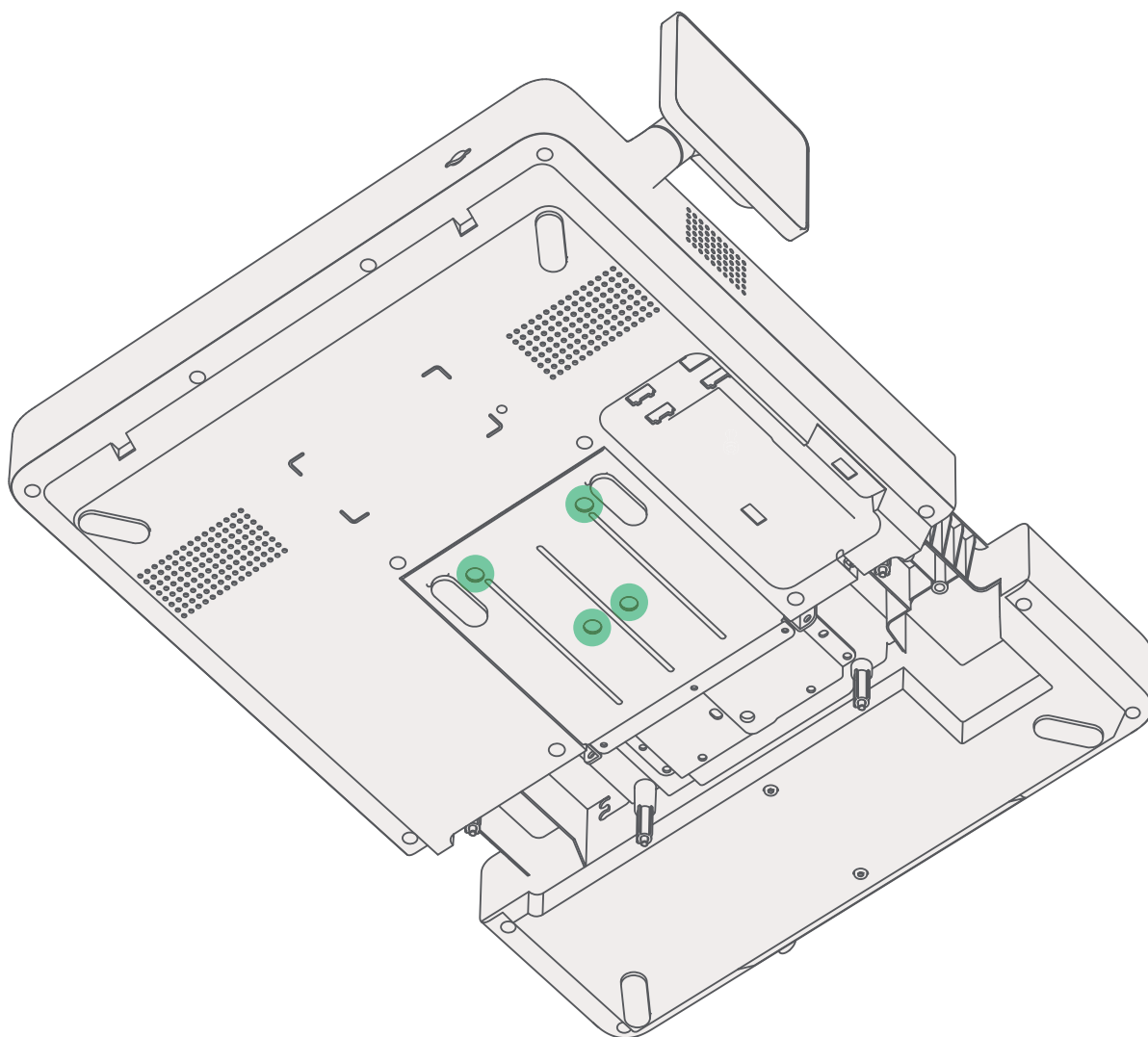
ST3-23 Screw (×13)
(For Base Housing)

Install Build Plate



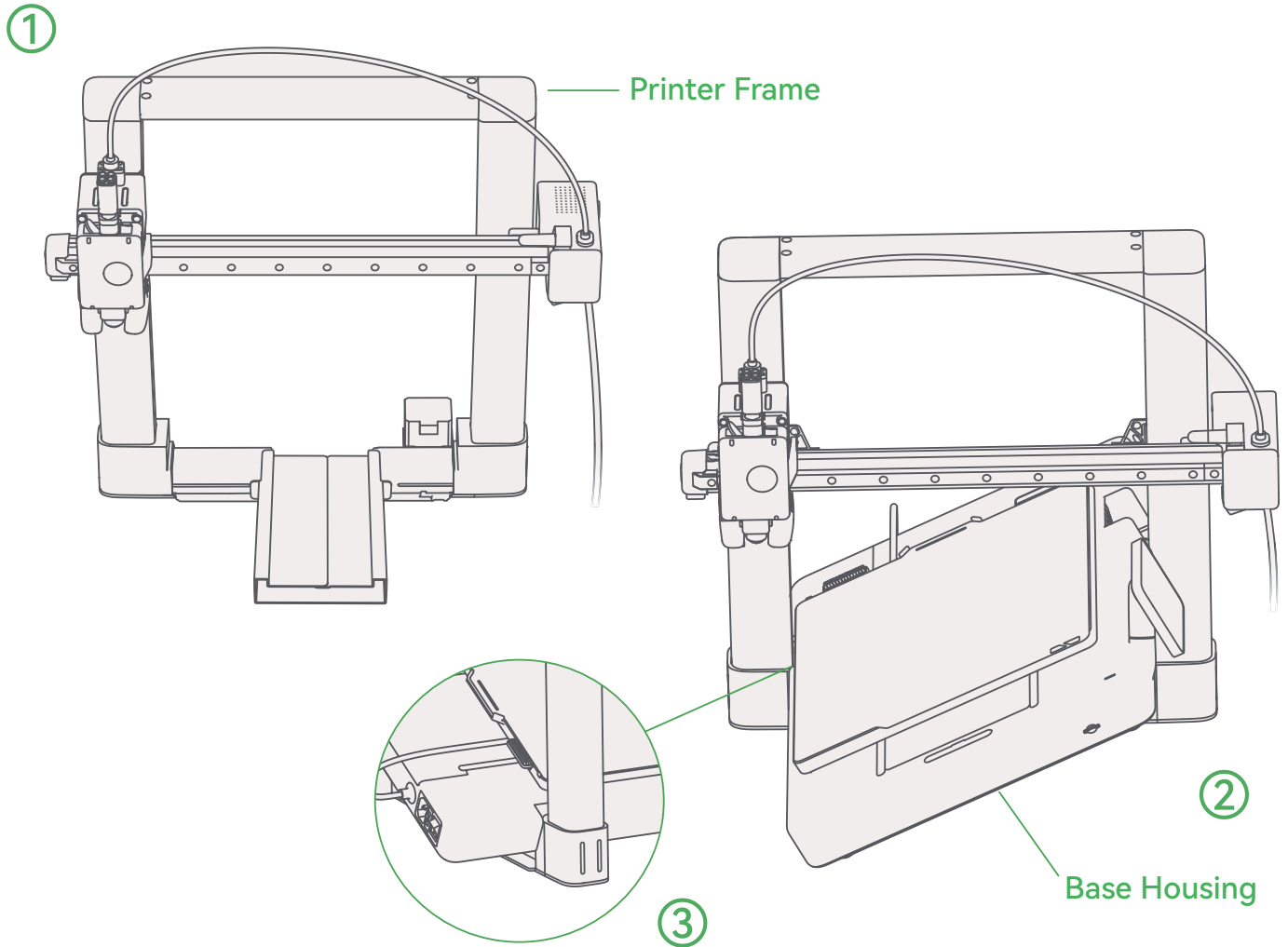
- ① Install the build plate with correct orientation, aligning the edge with the heatbed.

Unlock Heatbed



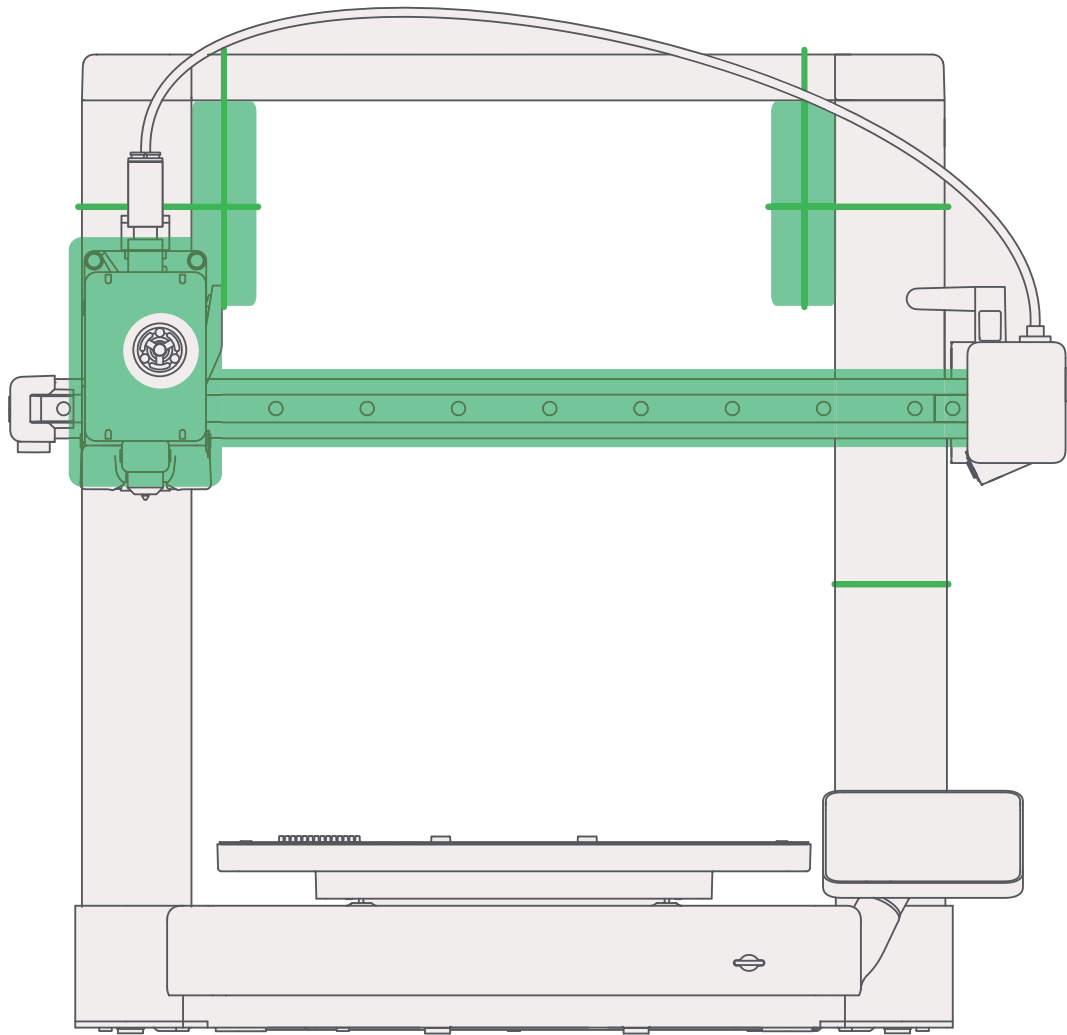
- ① Use Allen Key H2 to remove the 4 highlighted screws at the bottom of the Base Housing to unlock the heatbed
(Be careful when fully releasing the heatbed; use foam padding in the package to protect the heatbed from sliding down).

Mate Base Housing & Printer Frame



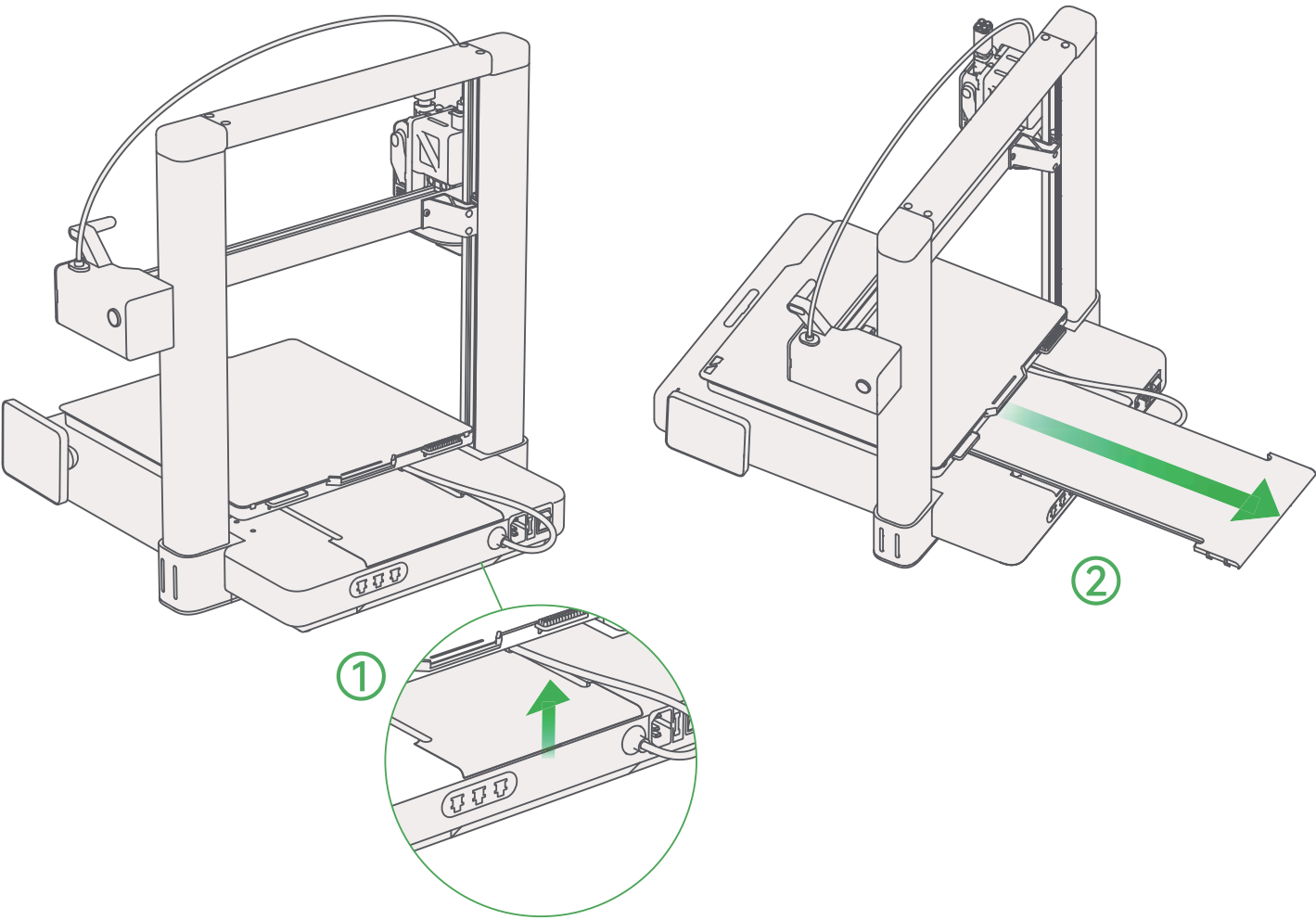
- ① Put the Printer Frame on the table as shown above.
- ② Tilt the Base Housing about 45 degree to pass through the Printer Frame.
- ③ Align the slot with the Printer Frame as shown in the diagram.
- ④ Slowly lower the Base Housing until it is fully flush with the Printer Frame on the table.

Unlock Toolhead



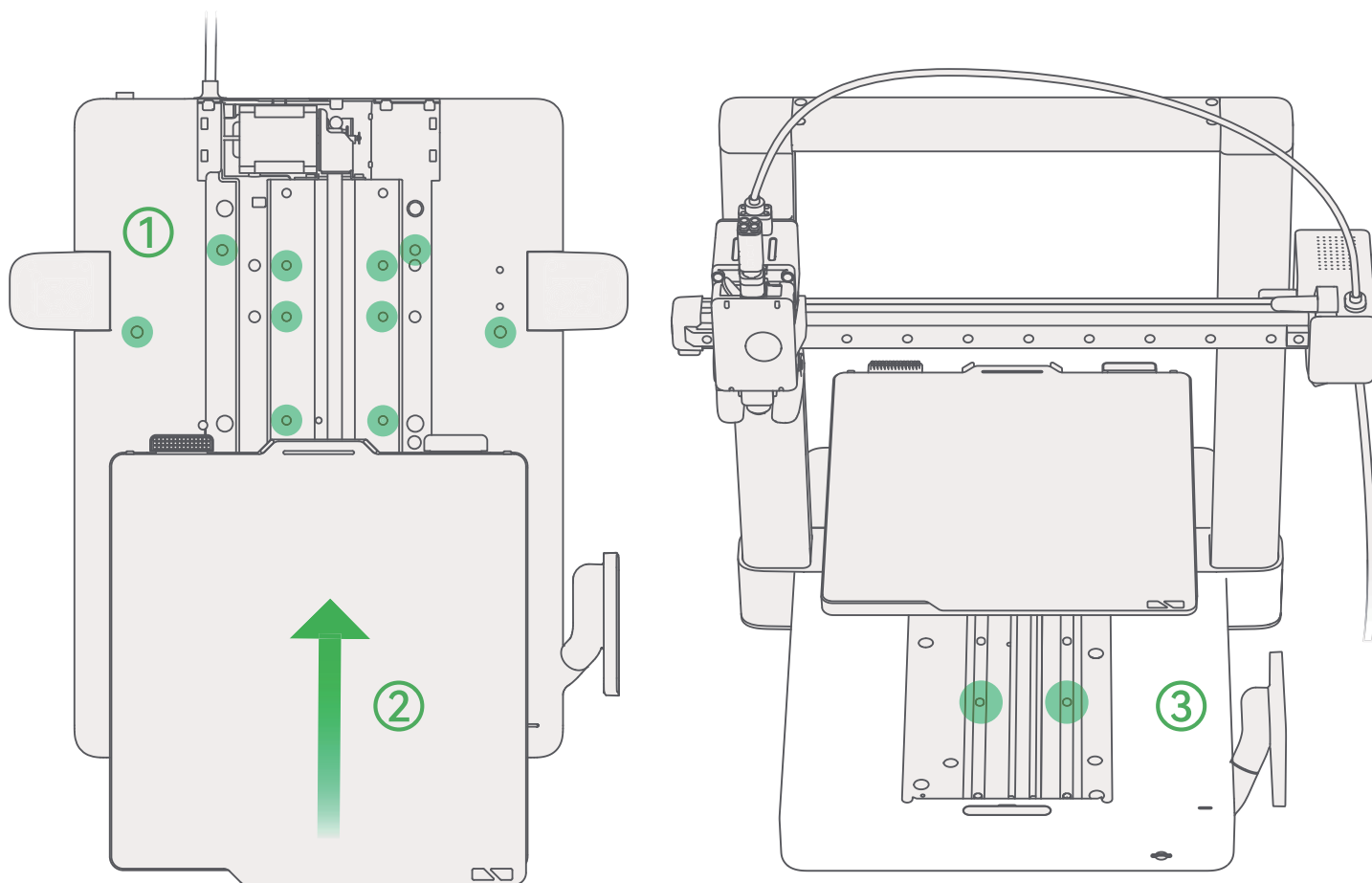
- ① Cut the zip tie and cardboard wrapped around the toolhead and X-axis.
- ② Remove the 5*zip ties and 2*foam paddings on the printer frame.

Remove Y-Axis Cover



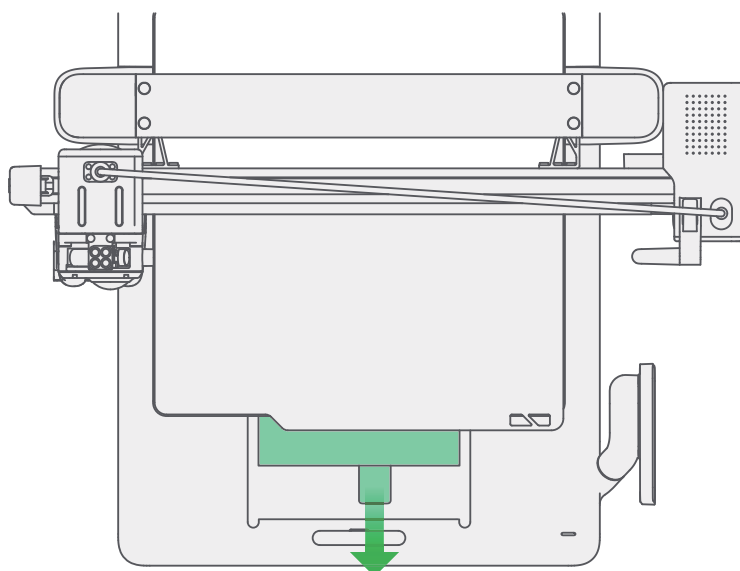
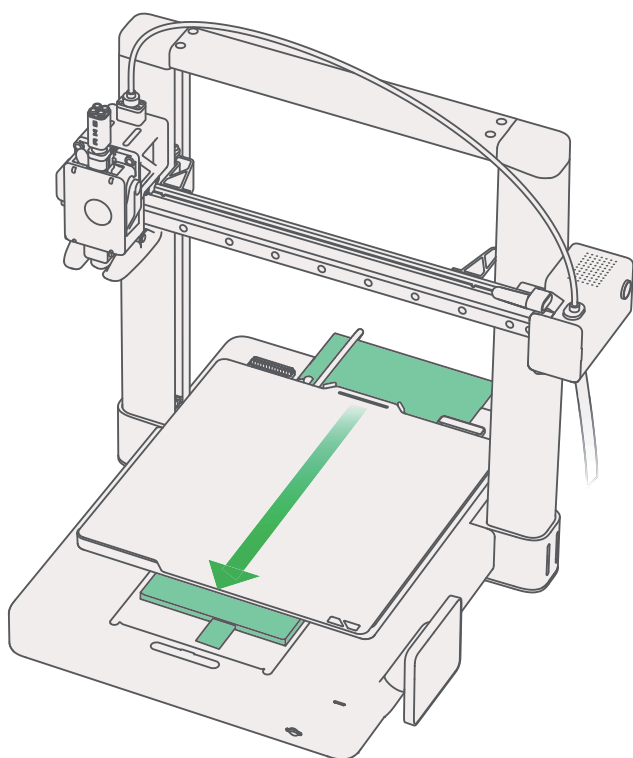
- ① Open the Y-axis cover.
- ② Pull out the Y-axis cover gently.

Lock Base Housing



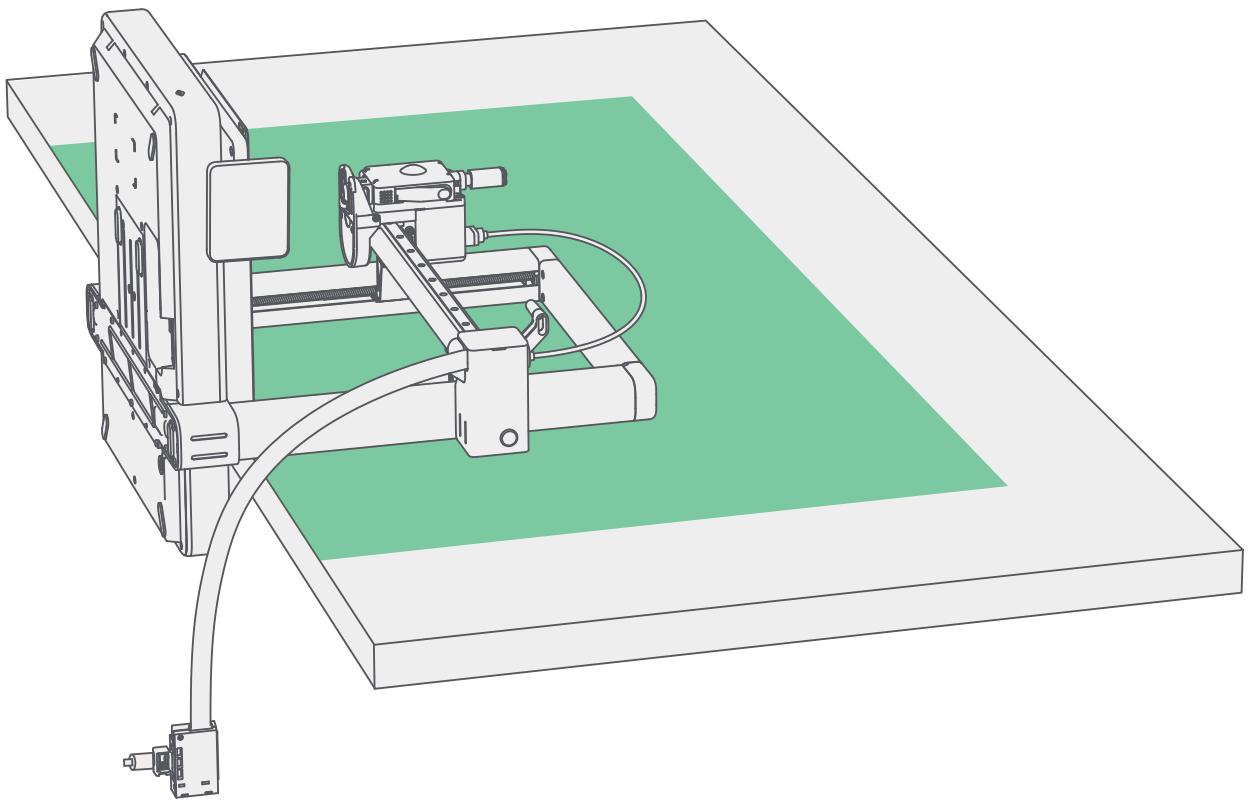
- ① Install 10*ST3-23 Screws (For Base Housing) in the holes highlighted in green.
- ② Push the heatbed to the other end.
- ③ Install 2*ST3-23 Screws (For Base Housing) in the holes highlighted in green.

Put Cover Back



- ① Gently slide the Y-axis cover back into place.
- ② Make sure to align the clip.

Place On Table

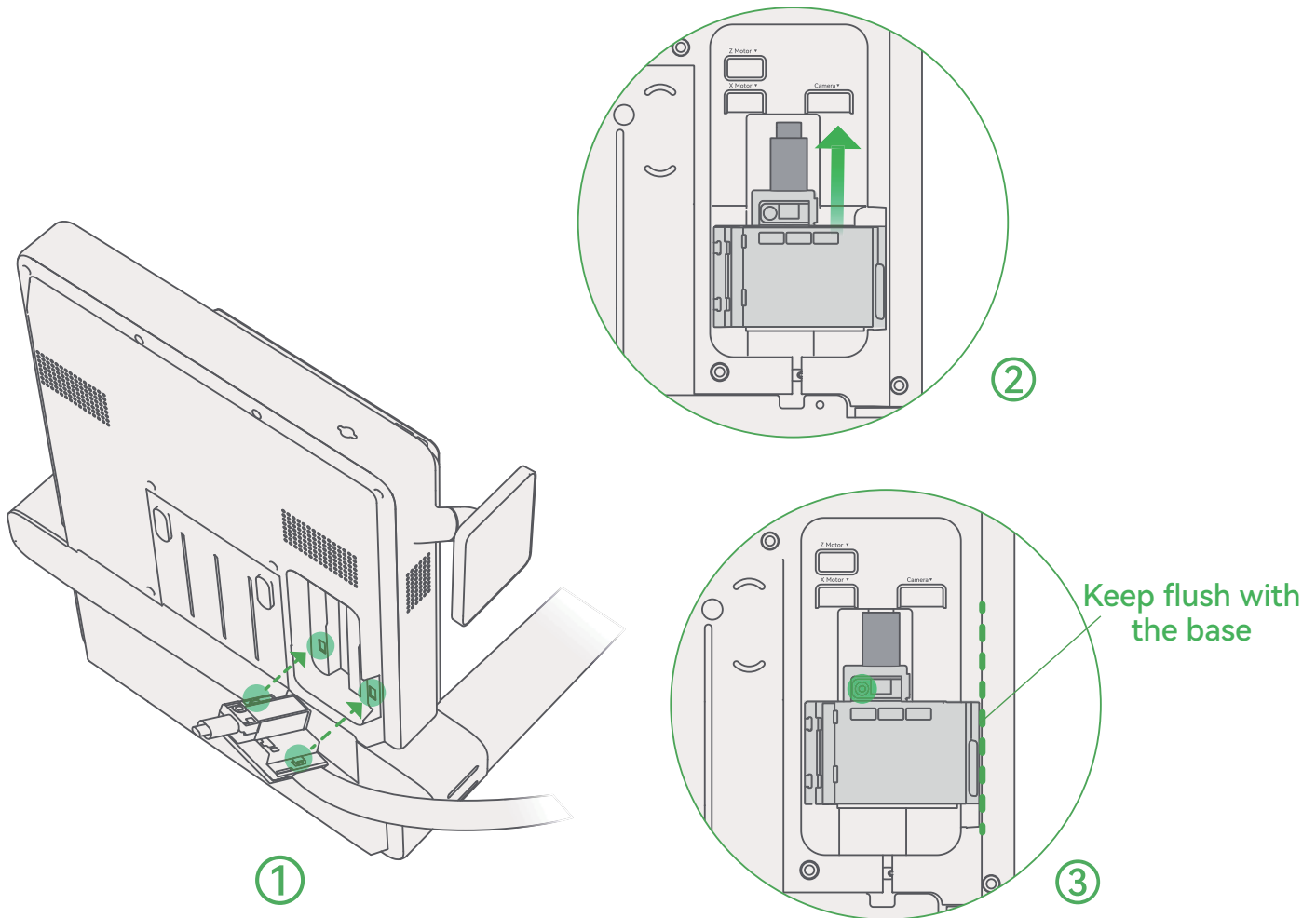


① Turn the A1 90 degree onto its rear, laying it on the edge of a table.

(It is recommended to cover the table with cardboard for protection.)

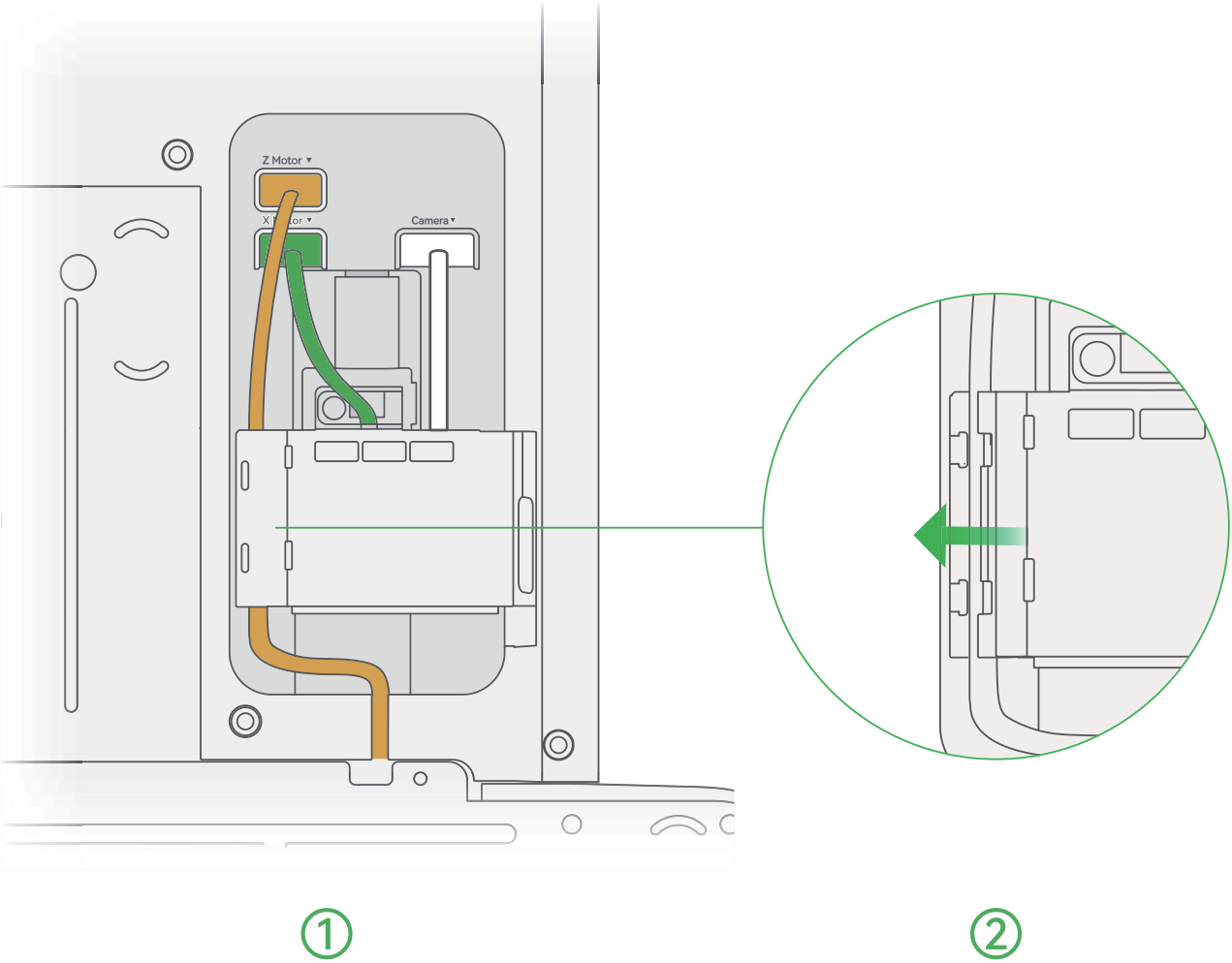
Please make sure the printer is secure on the table while following the steps.

Plug In Cable Box



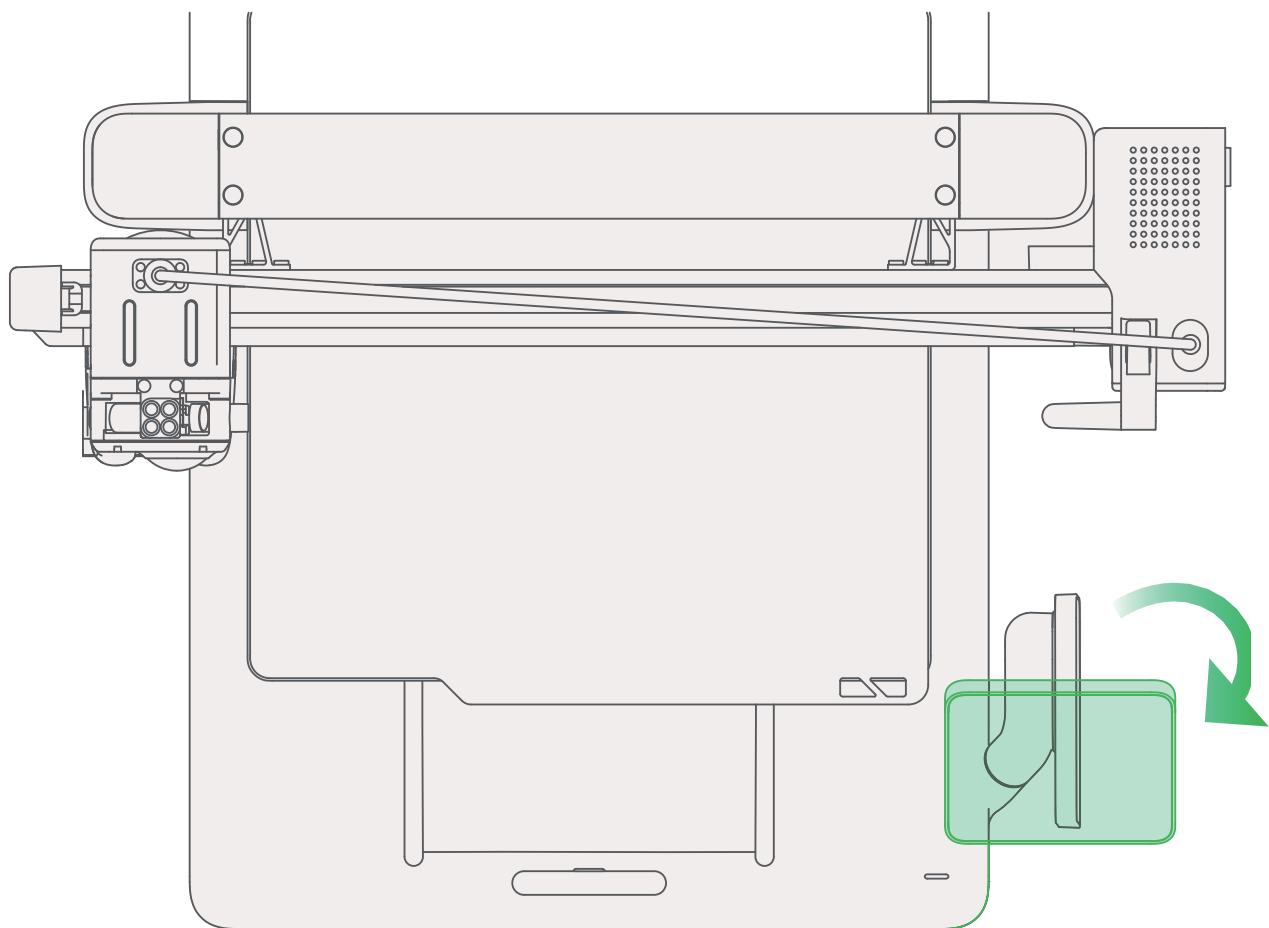
- ① Align the 2 clips on the cable box with the holes on the Base Housing.
- ② Slide up the cable box until the Type-C cable clicks in place. (DO NOT force the insert.)
- ③ Make sure the cable box is nice and flush in the slot, then screw in the pre-installed screw highlighted in green.

Plug In Connectors



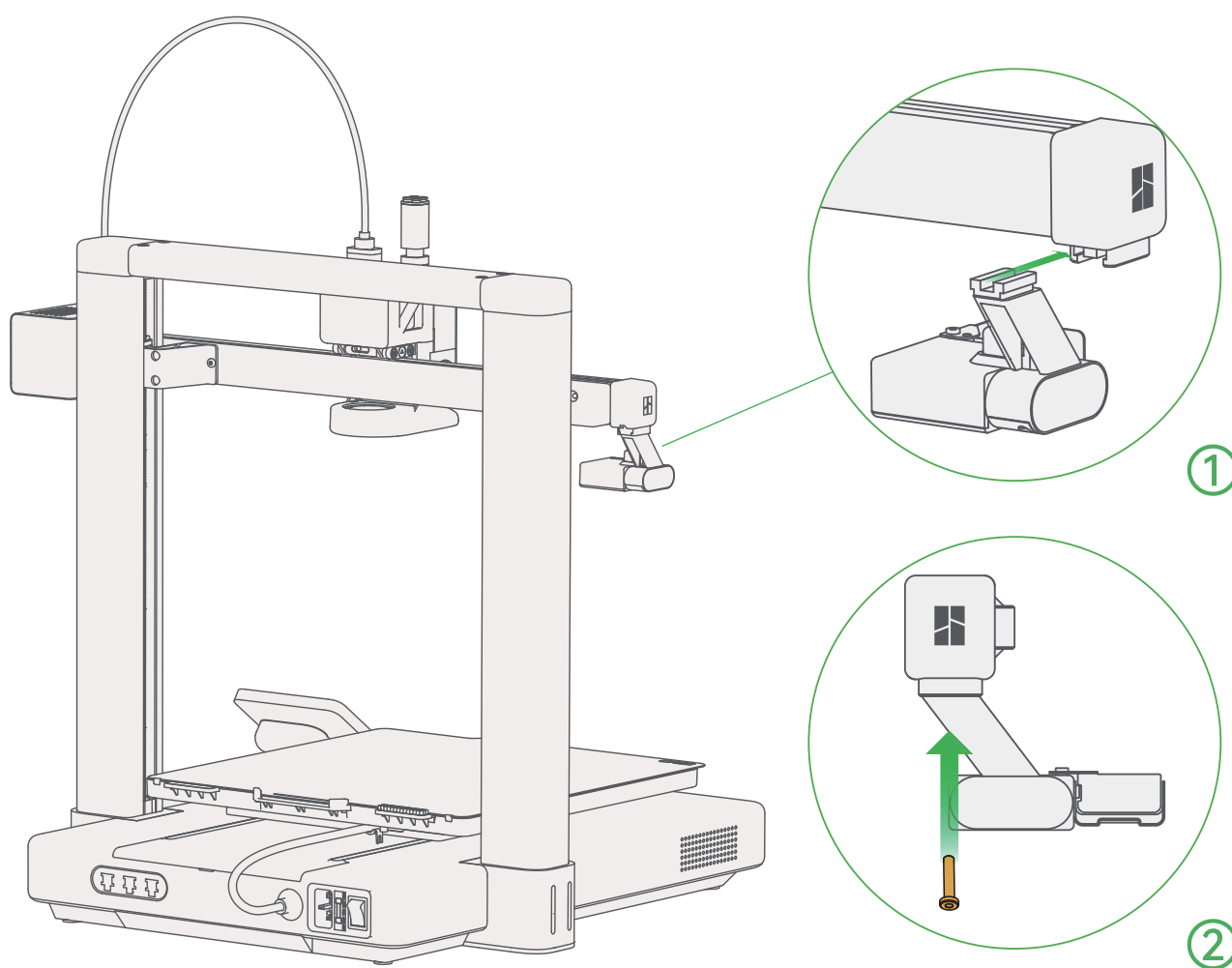
- ① Plug in the 3 harnesses according to color.
- ② Tuck the harness into the cable slot and then close the cover.

Fold Out Touch Screen



① Fold out the touch screen, make sure the touch screen is in place as shown in the graph.

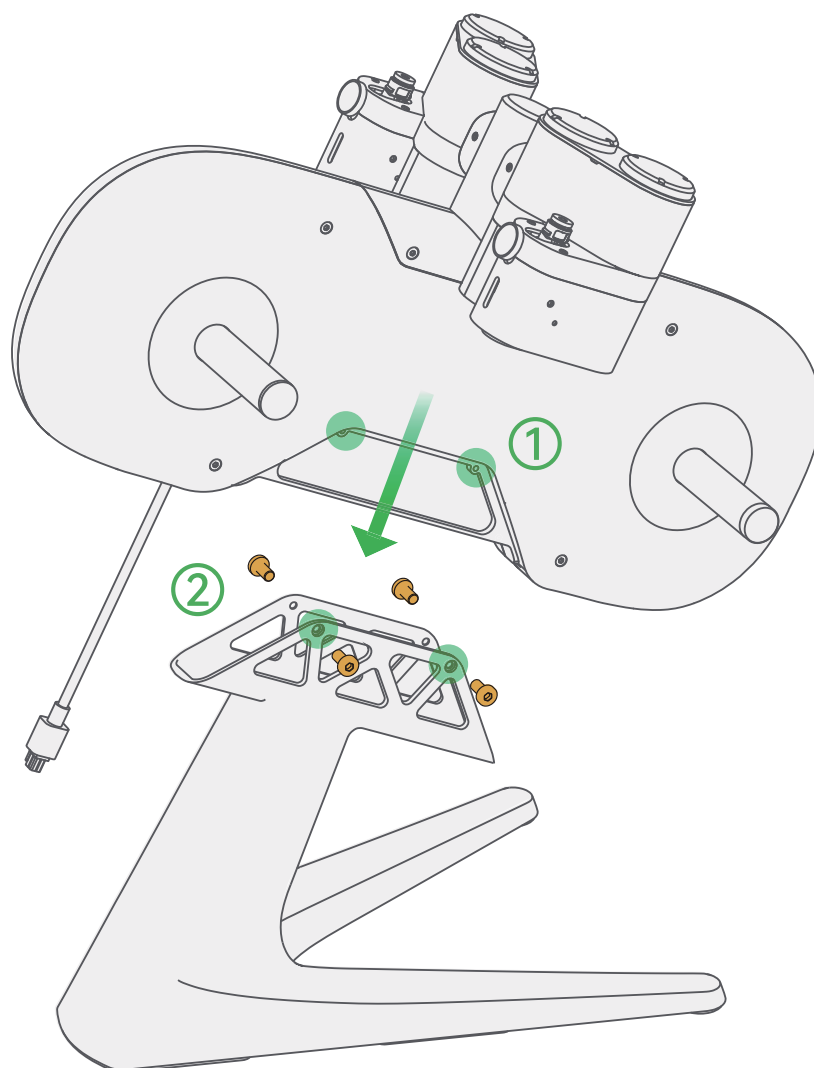
Install Purge Wiper



① Slide in Purge Wiper unit into the slot at the end of the X-axis.

② Install the 1*M3-12 screw from the accessory box to fix the Purge Wiper in place

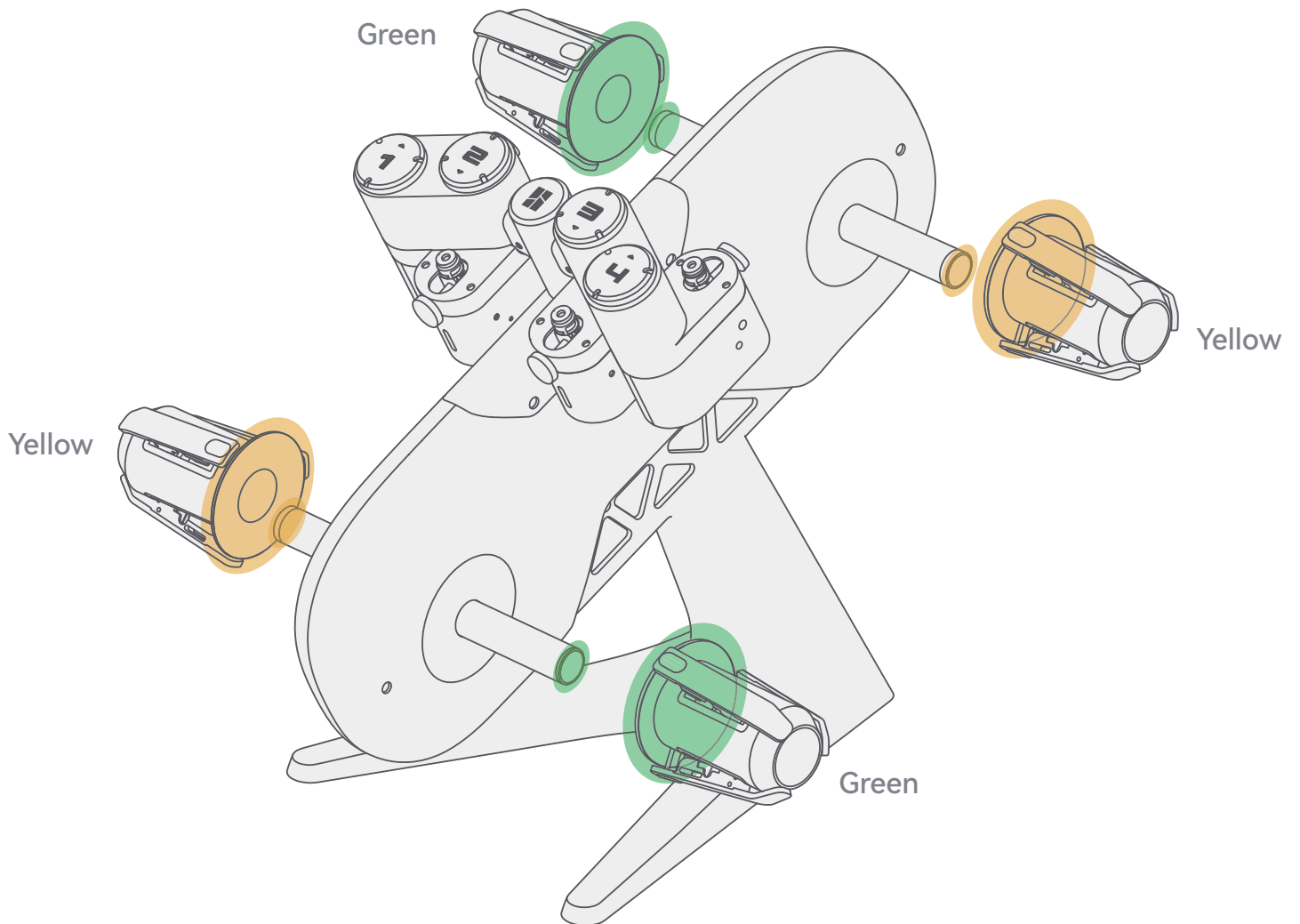
AMS lite Assembly



① Put the AMS lite body on the stand. (cable on the upward end)

② Secure the AMS lite with the 4*BT3-6 screws (For AMS Stand) from the accessory box.

AMS lite Assembly

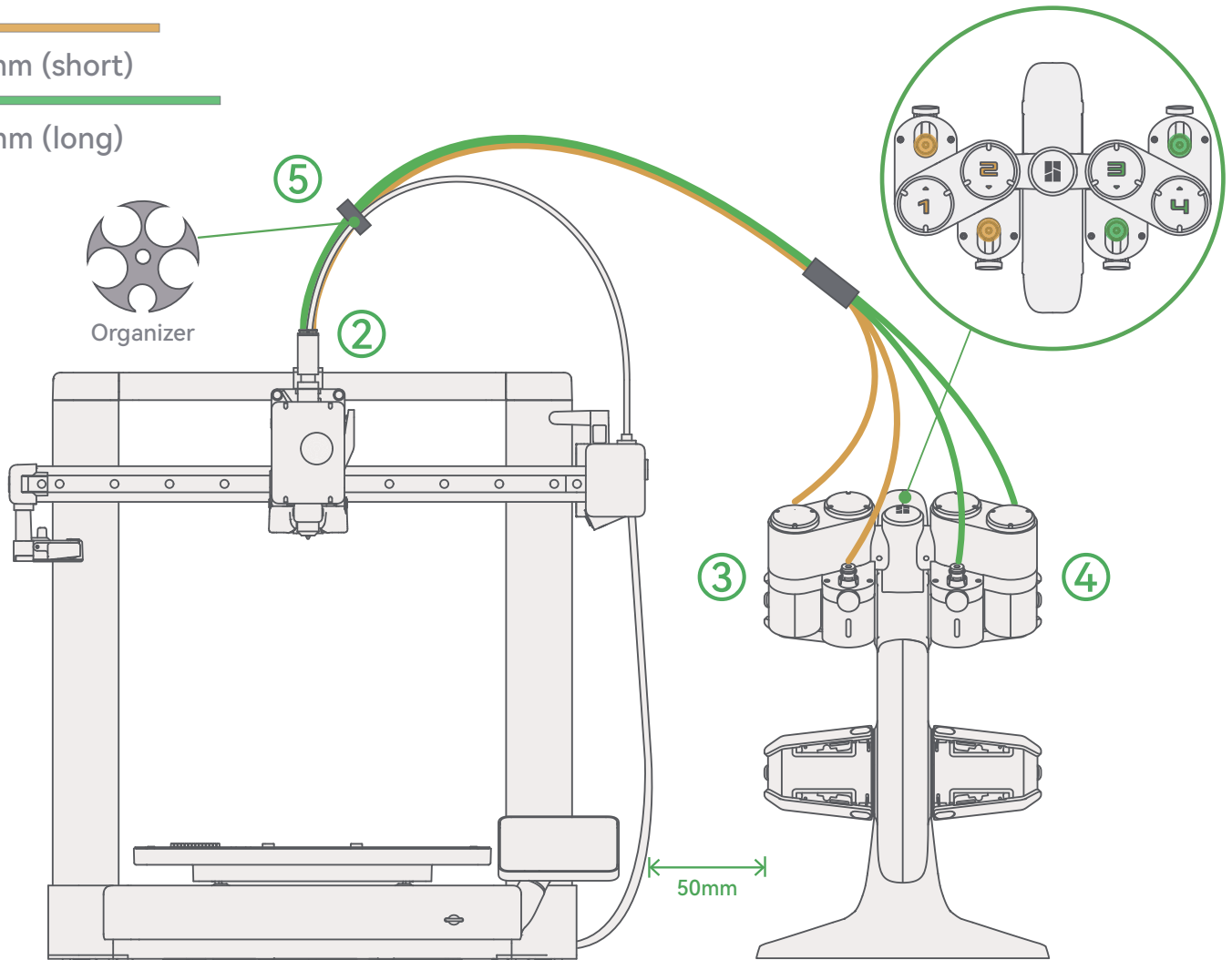


- ① Slide the rotary spool holders on (all the way in), being careful to match colors to avoid damaging any parts.

AMS lite Assembly

730mm (short)

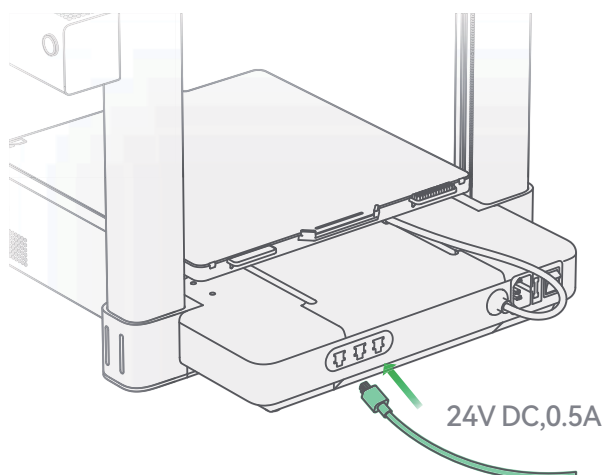
830mm (long)



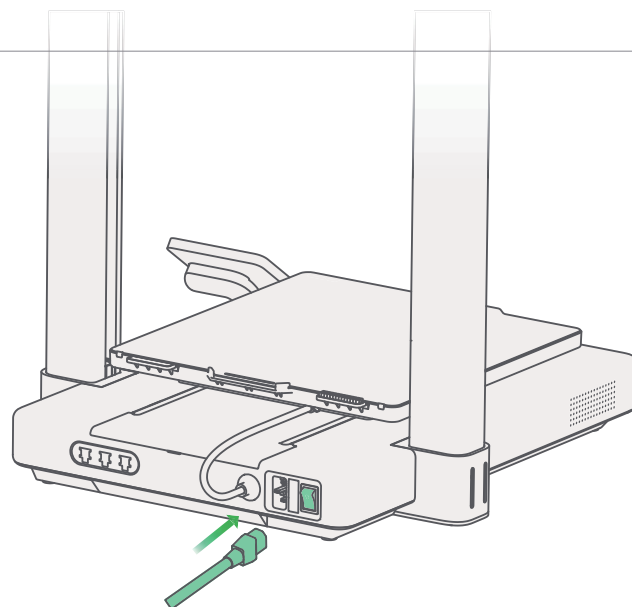
- ① Put AMS lite to the right side of the A1
- ② Insert all four PTFE tubes into the toolhead filament hub.
- ③ Insert 730mm PTFE tubes into ports 1 and 2.
- ④ Insert 830mm PTFE tubes into ports 3 and 4.
- ⑤ Clip the black data cable into the organizer.

(The recommended distance between A1 and AMS lite is 50mm as shown in the diagram.)

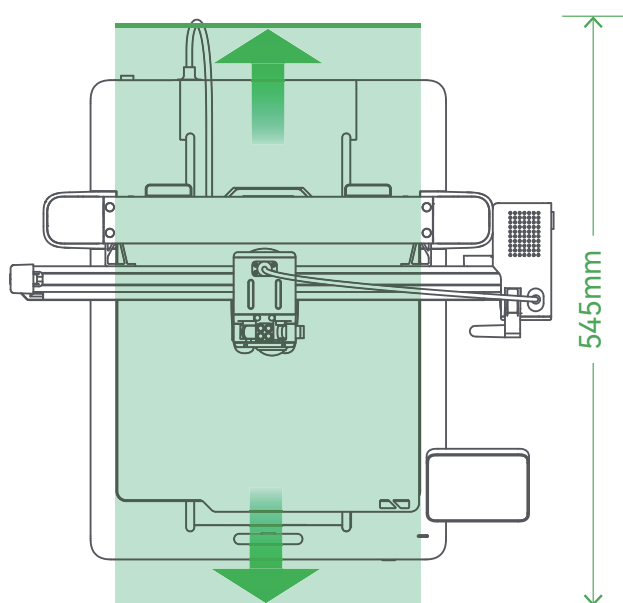
Powering On



- ① Plug the AMS lite 4pin connector into the port on the right of the A1. (either one)



- ② Plug in the power cable and turn on the A1 using the power switch on the back.



Please leave a safe amount of space for heatbed movement. (as shown in the diagram)