



Professional Manufacturer of car Internet Products.
Focus Wireless Car Multimedia Device.



If you would like to download the manual in the following
languages, please go to: www.ushilife.com
Polski, Nederlands, Svenska, Русский, Português, العربية

Instruction manual guide

English --- 1-4P

Español -- 5-8P

Français -- 9-12P

Deutsch -- 13-16P

Italiano -- 17-20P

日本語 -- 21-24P

English

Carplay projector

Original wired to wireless CarPlay

Instructions for use

LOOKING FOR DISTRIBUTOR

More than 30 years of automotive service provider, own factory, with R & D design capabilities, support OEM, sincere recruitment of global distribution agents, welcome to call to discuss cooperation.

Company: GUANGZHOU USHIAUTO PARTS CO.,LTd.

Address: Floor 1-3, No. 30-2, Lane 1, Wanggang East Street, Fenghuang Street, Yushatan, Tianhe District, Guangzhou City, Guangdong Province, China

If you have any questions, please contact customer service.

Product Features

Change the original wired CarPlay connection method, say goodbye to the data cable connection, wireless transmission brings more convenient connection experience, you use Apple CarPlay, enter the driver's compartment automatically connected.

Product specification parameters

- Power input: 5V 1~2.1A Power output: DC 5V 0.8~2A
- Product power consumption: 0.15W Adaptive resolution: adaptive

Product connection method

- Plug the Carplay projector into the USB / type-C interface of the car display.

iPhone for wireless connectivity

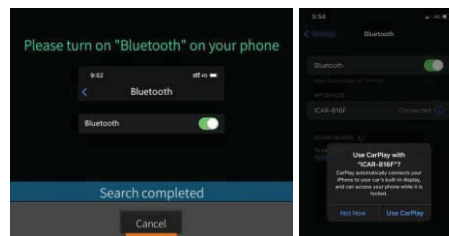


Use of iPhone (wireless Bluetooth connection)

1. Connect the Carplay projector to the car display USB port, click Active Search, turn on the phone WiFi and Bluetooth.



2. Click the Bluetooth signal of the cell phone on the car display, select pairing on the phone, you can use Apple CarPlay, to achieve wireless connection.



§ 15.19 Labelling requirements.

This device complies with part 15 of the FCC Rules. Operation is subject to the following two conditions: (1) This device may not cause harmful interference, and (2) this device must accept any interference received, including interference that may cause undesired operation.

§ 15.21 Information to user.

Any Changes or modifications not expressly approved by the party responsible for compliance could void the user's authority to operate the equipment.

§ 15.105 Information to the user.

Note: This equipment has been tested and found to comply with the limits for a Class B digital device, pursuant to part 15 of the FCC Rules. These limits are designed to provide reasonable protection against harmful interference in a residential installation. This equipment generates uses and can radiate radio frequency energy and, if not installed and used in accordance with the instructions, may cause harmful interference to radio communications. However, there is no guarantee that interference will not occur in a particular installation. If this equipment does cause harmful interference to radio or television reception, which can be determined by turning the equipment off and on, the user is encouraged to try to correct the interference by one or more of the following measures:

- Reorient or relocate the receiving antenna.
- Increase the separation between the equipment and receiver.
- Connect the equipment into an outlet on a circuit different from that to which the receiver is connected.
- Consult the dealer or an experienced radio/TV technician for help.

The device has been evaluated to meet general RF exposure requirement. The device can be used in portable exposure condition without restriction.