

TELESIN

**magnetic selfie
monitor screen**

手机磁吸自拍屏



User Guide/操作说明

Contents

目录

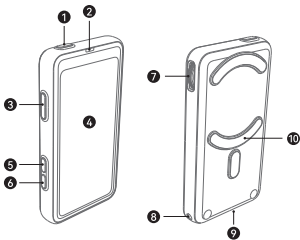
中文	-----	1
EN	-----	11
DE	-----	24
FR	-----	34
IT	-----	44
ES	-----	54

产品介绍

本产品是一款无线投屏器,用户可以打开手机投屏功能,将手机当前的显示画面投射到本产品的显示屏上,同时本产品自带蓝牙遥控功能,可以通过按键和波轮控制手机进行拍摄。适用于自拍,直播,短视频拍摄等使用场景。

本产品采用 4 英寸屏幕,体积小,方便携带,同时自带磁吸功能和变焦拍摄功能,更加方便用户进行拍照和视频创作。

产品图示



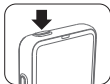
- ① 开关机键
- ② 状态指示灯
- ③ 拍照键
- ④ 显示屏
- ⑤ 显示效果键

- ⑥ 模式键
- ⑦ 变焦滚轮
- ⑧ 挂绳孔
- ⑨ Type-C充电口
- ⑩ magsafe磁铁

连接步骤

1. 开机

长按开关机键 2 秒, 打开设备电源(系统启动需要 6 秒)。



2. 连接手机蓝牙

- 打开手机的蓝牙连接功能, 搜索设备进行配对
- 在设备名称列表中搜索: **TELESIN_RC3_XXXXXX**(后六位设备编码由系统生成), 点击配对, 配对成功后即可使用蓝牙控制功能



- 苹果手机连接蓝牙后如果仅可以使用拍照键, 无法使用其它按键功能, 请进行如下操作:

进入设置-->辅助功能-->缩放-->缩放区域(全屏幕缩放)-->打开缩放。



* 打开“缩放”时，画面会放大，三指轻点两下恢复。其它设置不变。

3. 手机投屏(iOS 系统)

- 打开手机无线局域网,搜索投屏器的 SSID 账号,并输入密码进行无线连接

- 名称: TELESIN_RC3_XXXXXX

- 密码: 123456



- 打开手机上的“屏幕镜像”功能,弹出投屏器的设备 SSID 账号,点击连接进行投屏
- 5 分钟未进行投屏连接,超时设备会自动关机



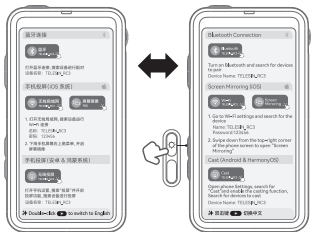
4. 手机投屏(安卓系统 & 鸿蒙系统)

- 手机屏幕下滑找到“无线投屏”功能,搜索到设备 SSID 账号后点击进行无线投屏,或者打开手机设置 - 搜索“无线投屏”- 打开“无线投屏”功能。
- 5 分钟未进行投屏连接,超时设备会自动关机

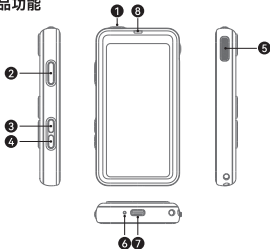


5. 开机页面中英文切换

- 开机动画结束后会提示无线连接操作,双击亮度键 \odot 可切换中英文说明



产品功能



相机拍摄模式

序号	按键操作	功能
1 开关机键	长按 2 秒	开机并显示连接操作页面 / 关机
	单击	已连接蓝牙并打开手机相机时, 控制前后摄像头翻转
2 拍照键	单击	已连接蓝牙并打开手机相机时, 开始拍照或录像
	长按 2 秒	已连接蓝牙, 熄屏和锁屏状态下快速打开手机相机
3 亮度键	单击	亮度调节, 短按一次调节一档屏幕亮度, 总共三档可调

④ 模式键	单击	单击按键显示内容上下翻转 180 度
	长按 2 秒	长按 2 秒进行镜像 / 非镜像显示切换
⑤ 旋钮	上翻旋钮	已连接蓝牙并打开手机相机时, 相机变焦放大
	下翻旋钮	已连接蓝牙并打开手机相机时, 相机变焦缩小
① + ④ 开关机键 + 模式键	同时长按 3 秒	复位, 删除已配对的手机设备

充电功能

序号	操作	功能
⑥ 电量指示灯	插入 TypeC 充电线	充电时绿灯呼吸, 充电完成后绿灯常亮
⑧ 指示灯	低电量	低电量时红灯闪烁
	拍照或点赞	指示灯亮一次

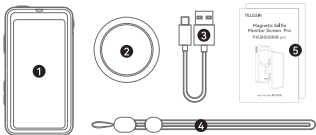
无线连接

连接类型	操作	功能
蓝牙连接	手机配对中	绿灯持续闪烁
	配对成功	绿灯常亮 3s, 蓝牙图标显示连接状态
投屏连接	投屏成功	投屏图标显示连接状态
	投屏超时	5 分钟未进行投屏连接, 超时设备会自动关机
	超距离断连	超距离断连时支持回连, 按任意按键唤醒重新连接

产品规格

产品尺寸	109mm*59mm*13.9mm
产品重量	105g
材质	材质:塑胶+五金
屏幕尺寸	4英寸
屏幕分辨率	540*1080P
续航时间	>3小时
电源输入	5V ■ 2A
电池容量	1800mAh/3.7V
电源输入端口	USB-C
无线传输	WiFi+蓝牙
工作温度	0~40°C
充电温度	0~45°C

包装清单



- ① 投屏器主机*1 ③ 充电线*1 ⑤ 说明书*1
② 引磁环*1 ④ 挂绳*1

安全提示

- 本产品属于精密仪器, 请避免使用时掉落, 碰撞或者承受重击
- 请勿将本产品放置在有腐蚀性化学物品的地方, 避免产品受到腐蚀, 被腐蚀可能引起产品故障
- 请使用软布, 干布清洁本产品
- 请勿将本产品放置在温度过高的地方, 高温可能导致产品内部电池受损或爆炸
- 请勿自行拆解和维修机器
- 此说明书依据本公司严格测试后制定, 设计和规格如有变更, 恕不另行通知

免责声明

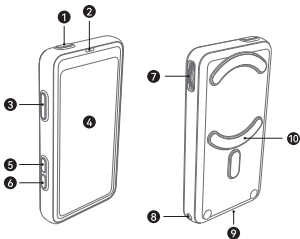
请仔细阅读本声明,一旦使用本产品,即视为对本声明的全部认可和接受。每次使用前,请仔细检查产品,若出现破损、变形,请勿使用。使用本产品,就意味着您认可并同意,您将对使用本产品的行为和可能产生的后果负全部责任。您承诺仅会出于正当合法的目的使用本产品。您理解并同意,对于直接或间接因使用本产品而造成的滥用、不利影响、损害、伤害、惩罚或者其他法律后果,泰迅数码有限公司(以下简称“Telesin”)将不承担任何责任。用户应遵循包括但不限于本文提及的使用注意事项。在国家法律法规范围内,本承诺解释权、修改权归 Telesin 所有。

泰迅保修期从您收到货物后的当日起计算,享有 6 个月保修服务。

Product Introduction

This product is a wireless screen casting device that allows users to mirror their smartphone display onto its 4-inch screen. Equipped with Bluetooth remote control functionality, it enables photo/video capture via physical buttons and zoom knobs. Ideal for selfies, live streaming, and short video creation.

Product Diagram



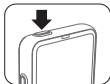
- 1 Power Button
- 2 Status Indicator
- 3 Capture Button
- 4 Display Screen
- 5 Brightness Key

- 6 Mode Key
- 7 Zoom Knob
- 8 Lanyard Hole
- 9 Type-C Charging Port
- 10 MagSafe Magnet

Connection Steps

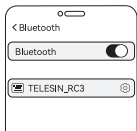
1. Power On

Press and hold the Power button for 2 seconds to turn on the device power (the system startup requires 6 seconds).

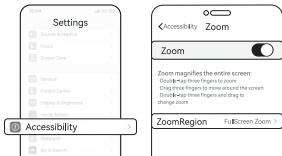


2. Connect Mobile Phone via Bluetooth

- Turn on the Bluetooth function on your phone and search for devices to pair.
- In the list of device names, search for: **TELESIN_RC3-XXXXXX** (the last six digits are generated by the system). Tap to pair. Once paired successfully, you can use the Bluetooth control functions.



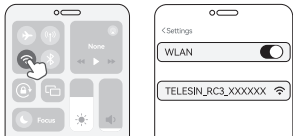
- For Apple Phones: If only the camera shutter button works after Bluetooth connection and other button functions are unavailable, perform the following steps:
 - Go to Settings → Accessibility → Zoom.
 - Set the Zoom Region to Full Screen Zoom.



- * (When the "Zoom" button is turned on, the phone screen will magnify. Double-tap the screen with three fingers to restore normal size).

3. Screen Mirroring (iOS System)

- Open the Wireless LAN on your phone, search for the screen mirroring device's SSID, and enter the password to connect wirelessly.
 - Name: TELESIN_RC3_XXXXXX
 - Password: 123456



- Open the Screen Mirroring function on your phone. The screen mirroring device's SSID will pop up. Tap to connect and start screen mirroring.

Note: If no screen mirroring connection is made within 5 minutes, the device will automatically power off due to timeout.

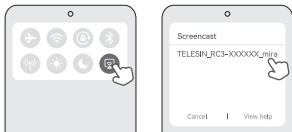


4. Screen Mirroring (Android System & HarmonyOS)


- Swipe down on the phone screen to find the "Wireless Cast"/"Wireless Projection" function, tap the device SSID to start wireless screen mirroring after it is found.

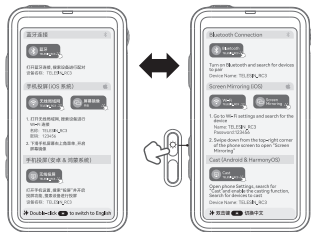
Alternatively: Open phone Settings → Search for "Wireless Cast"/"Wireless Projection" → Turn on "Wireless Cast"/"Wireless Projection".

- Note: If no screen mirroring connection is made within 5 minutes, the device will automatically power off due to timeout.

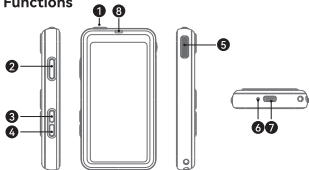


5. Switch Language (Chinese/English) on Startup Screen

- After the startup animation ends, wireless connection instructions will appear.
- Double-click the  Brightness button to switch between Chinese and English instructions.



Functions



Camera Control Mode

No.	Operation	Function
1 Power Key	Long press 2 sec	Power ON (displays connection screen) / Power OFF
	Single click	When connected to Bluetooth and the phone camera is open: Flip front/rear camera
2 Shutter Key	Single click	When connected to Bluetooth and the phone camera is open: Start taking photo or recording video
	Long press 2 sec	When connected to Bluetooth: Quickly open phone camera from sleep/locked screen
3 Bright-ness Key	Single click	Brightness adjustment (one step per click, three levels total)
4 Mode Key	Single click	Flips the display content 180 degrees vertically.
	Long press 2 sec	Toggles between mirrored and non-mirrored display.
5 Knob	Rotate Up	When connected to Bluetooth and the phone camera is open: Camera zoom in
	Rotate Down	When connected to Bluetooth and the phone camera is open: Camera zoom out
1 + 4 Power Key + Mode Key	Long press 3 sec simultaneously	Restore factory settings (Remove paired devices)

Charging Function

No.	Operation	Function
6 Battery Level Indicator (s)	Insert Type-C charging cable	Green light breathing during charge; Solid green when fully charged
8 Status Indicator (s)	Low Battery	Red light flashing
	Taking photo / Liking video	Indicator flashes once

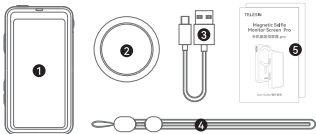
Wireless Connection

Connection Type	Status	Function
Blue-tooth	Pairing	Green light flashes continuously
	Paired	Green light solid for 3 seconds; Bluetooth icon shows connection status.
Casting	Successful	Casting icon shows connection status.
	Timeout	Device automatically powers off if no casting connection is made within 5 minutes.
	Out-of-Range	Auto-reconnect supported when back in range. Press any key to wake up device and initiate reconnection.

Specifications

Product Dimensions	109mm × 59mm × 13.9mm
Product Weight	105g
Material	Plastic + Hardware
Screen Size	4 inches
Screen Resolution	540 × 1080P
Battery life	>3 hours
Power Input	5V = 2A
Battery Capacity	1800mAh/3.7V
Power Input Port	USB-C
Wireless Transmission	WiFi + Bluetooth
Operating Temperature	0~40°C
Charging Temperature	0~45°C

Package Contents



❶ Main Unit ×1

❷ Magnetic Ring ×1

❸ Charging Cable ×1

❹ Wrist Strap ×1

❺ User Manual ×1

Safety Tips

- This product is a precision instrument. Please avoid dropping, colliding or heavy impact during use.
- Do not place the product in areas with corrosive chemicals to prevent corrosion, which may cause the product to malfunction.
- Please clean the product with a soft, dry cloth.
- Do not place the product in excessively high temperatures, as this may damage or cause the internal battery to explode.
- Do not disassemble or repair the machine by yourself
- This manual has been prepared based on rigorous testing by our company. Design and specifications are subject to change without prior notice.

FCC Caution

15.19 Labelling requirements.

This device complies with part 15 of the

FCC Rules. Operation is subject to the following two conditions: (1) This device may not cause harmful interference, and (2) this device must accept any interference received, including interference that may cause undesired operation.

15.21 Information to user.

Any changes or modifications not expressly approved by the party responsible for compliance could void the user's authority to operate the equipment.

15.105 Information to the user.

Note: This equipment has been tested and found to comply with the limits for a Class B digital device, pursuant to part 15 of the FCC Rules. These limits are designed to provide reasonable protection against harmful interference in a residential installation. This equipment generates uses and can radiate radio frequency energy and, if not installed and used in accordance with the instructions, may cause harmful interference to radio communications. However, there is no guarantee that interference will not occur in a particular installation. If this equipment does cause harmful interference to radio or television reception, which can be determined by turning the equipment off and on, the user is encouraged to try to correct the interference by one or more of the following measures:

- Reorient or relocate the receiving antenna.
- Increase the separation between the equipment and receiver.
- Connect the equipment into an outlet on a circuit different from that to which the receiver is connected.

-Consult the dealer or an experienced radio/TV technician for help.

The device has been evaluated to meet general RF exposure requirement. The device can be used in portable exposure condition without restriction.

IC Statement

-English:

This device contains licence-exempt transmitter (s)/receiver(s) that comply with Innovation, Science and Economic Development Canada's licence-exempt RSS (s). Operation is subject to the following two conditions:

- (1) This device may not cause interference.
- (2) This device must accept any interference, including interference that may cause undesired operation of the device.

Any changes or modifications not expressly approved by the party responsible for compliance could void the user's authority to operate the equipment.

RF exposure statement:

The device was evaluated to meet general RF exposure requirements. The device can be used in portable exposure condition without restriction.

- French:

Cet appareil contient des émetteurs / récepteurs exemptés de licence conformes aux RSS (RSS) d'Innovation, Sciences et Développement économique Canada. Le fonctionnement est soumis aux deux conditions suivantes:

- (1) Cet appareil ne doit pas causer d'interférences.
- (2) Cet appareil doit accepter toutes les interférences, y compris celles susceptibles de provoquer un fonctionnement indésirable de l'appareil.

Tout changement ou modification non expressément approuvé par la partie responsable de la conformité pourrait annuler l'autorité de l'utilisateur à utiliser l'équipement.

Déclaration d'exposition RF:

L'appareil a été évalué pour répondre aux exigences générales en matière d'exposition aux RF. L'appareil peut être utilisé en condition d'exposition portable sans restriction.

Declaration of Conformity



Disclaimer

Please read this statement carefully and by using this product you will be deemed to have acknowledged and accepted it in full. Please check the product carefully before each use and do not use it if damaged or deformed. By using this product, you acknowledge and agree that you are fully responsible for your actions and the possible consequences of using this product. You undertake to use this product only for legitimate and lawful purposes. You understand and agree that ("Telesin") shall not be liable for any misuse, adverse effects, damages, injuries, penalties or other legal consequences arising directly or indirectly from the use of this product. The user should follow the precautions including but not limited to those mentioned herein. To the extent Telesin reserves the right to interpret and modify this commitment within the limits of national laws and regulations.

The warranty period for TELESIN products begins 6 months on the day you receive the product.

www.telesin.com