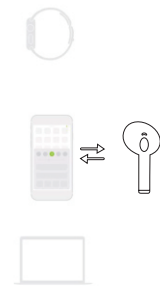


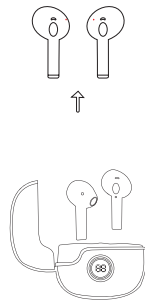
# K9

True wireless stereo earphones

## User Manual



Welcome  
Thank you for purchasing  
K9 true wireless stereo  
bluetooth earphones.  
K9 earphones can be  
used with bluetooth  
electronic products, such  
as mobile phones, smart  
watches, computers etc.  
Please take some time to  
read our user manual  
carefully and start your  
music journey with our  
earphones.



### ◆ PAIRING

Open charging box and take out  
both two earphones, The earphones  
will turn on automatically and enter  
pairing mode after 5s. You will hear  
voice prompt “beep” on L/R  
earphones sometime after paired  
successfully.

Turn your bluetooth device on  
and search “K9” to connect,  
you will hear voice prompt  
“connected”. Let's start music  
journey now!



### Function instructions

Play/Pause	Touch the touch switch once
Volume -	Touch “R” earphone touch switch twice
Volume +	Touch “L” earphone touch switch twice
Previous song	Touch “R” earphone touch switch for 2s
Next song	Touch “L” earphone touch switch for 2s
Answer phone call	touch the switch once
End phone call	touch the switch once
Reject incoming call	Long press the touch switch for 2s
Wake up Siri	Long press the touch switch for 3 times

### ◆ CHARGING

Earphones: Put the earbuds into the charging case,  
the indicator lights are flashing and it will charge the  
earbuds automatically after you close the charging case

#### Warm Reminders:

- 1.If the earbuds do not connect to each other when you  
take the earbuds out of the charging case and you will  
see the red LED light of two earbuds will flash slowly
- 2.After the earbuds is paired, the main earbud is flashing  
quickly, but the secondary earbud doesn't flash
- 3.If the LED lights no flash, this means that both earbuds  
have connected to your mobile device successfully
- 4.Put in or take the earbuds out of the charging case,  
the LED light will flash, that means the earbuds have  
connected to the charging case successfully and charging  
has begun after you close the charging case

**Charging Case:** The charging case is connected to  
the Type-C and yellow light will flash to indicate  
charging has begun

Chipset introduction  
Earphones type: TWS bluetooth earphones  
Bluetooth chipset: 32-bit RISC CPU 6976D  
Bluetooth protocol: a2dp \ avctp \ avdtp \ avrcp \ hfp  
\ spp \ SMP \ att \ gap \ GATT \ rfcomm \ SDP \ I2cap  
Bluetooth version: V5.0+EDR.BLE  
Radio frequency power class: class2 and olyss3  
Transmission distance: ≥10M  
Charging port type: Type-C  
Operating voltage: 3.7V  
Charging current: charging box 200mAh, earphone 30mAh  
Charging time: charging box ≤2 hours, earphone ≤1.5 hours  
battery capacity: charging box 400mAh+ earphone 40mAh\*2  
Call duration: 4-5 hours, music playing duration: 5-6 hours,  
Battery cycle life: charge and discharge cycles ≥400 times  
standby duration: 60 hours

Microphone type: MEMS silicon wheat  
Microphone: Dual mic (left/right)  
Sensitivity:-38db ±3db (db = 1v/pa @ 1khz)  
Sound output mode: backward sound  
SNR:63dB  
Distortion THD: less than 0.15%94db SPL@1khz  
Impedance: 200Ω

Speaker type: Double composite membrane micro speaker  
Drive:φ13mm, N45 Neodymium magnet  
Sensitivity: 103db (±3db) @ 1khz.126mV  
Impedance: 32Ω  
Frequency response: 20hz-20KHz  
Rated power: 3mW

Charging box size: 49\*27\*54mm  
Earphone size: 20\*18\*36mm

Function introduction  
K9 earphones support master & deputy earphones  
switching freely, It means you could use each earphones  
independently, Power off any one earphone of them won't  
effect another earphone's usesing.  
When one earphone battery low or you only want wear one  
earphone, you could power off one earphone of them or put  
it into charging box. Just pick up from the charging box, the  
earphone can connect another earphone quickly once you  
wanna use them together.

### Indicator light introduction

Power on	Red light flashes slowly
Power off	Red light flashes 3 times
Pairing succeeded	The master earphone red indicator flash quickly and the deputy earphone indicator light is off.
connected device Successfully	Both L/R earphones red indicator are off.
Low battery	Red light flashes slowly
Left earphone charging	Left number on LED digital screen flash
Right earphone charging	Right number on LED digital screen flash
Charging box charging	The LED digital display screen numb flash

Whether Pairing succeeded	If Pairing failed, you will find 2 K9 pairing name in your device, you need put 2 earphones into charging box again, close the charging box flip cover, then open the charging box flip cover again wait for 5s, you will find only 1 K9 pairing name in your device now, Re-connect your device is ok.
Confirm if both earphone are turn on	If only one earphone can hear the sound, please check whether both earphone are power on normally. It possible that another earphone under low battery or power off status. Please recharge the earphone,then turn it on is ok. You could pick up the earphone from charging box power on automatically or long touch switch until earphone power on.

Confirm the charging box wheather have power	When the charging box under few battery or no battery situation, it can't recognized the earphone after you put the earphone into charging box, it caused the earphones still working.
Check the earphone charging point whether covered by other things.	If the earphones charging point covered by other things, it caused the charging box can't charging for the earphones, Please try remove it or use alcohol wipe to clean and try charging again..

## FCC Statement

This device complies with part 15 of the FCC Rules. Operation is subject to the following two conditions: (1) This device may not cause harmful interference, and (2) this device must accept any interference received, including interference that may cause undesired operation.

This equipment has been tested and found to comply with the limits for a Class B digital device, pursuant to part 15 of the FCC Rules. These limits are designed to provide reasonable protection against harmful interference in a residential installation. This equipment generates, uses and can radiate radio frequency energy and, if not installed and used in accordance with the instructions, may cause harmful interference to radio communications. However, there is no guarantee that interference will not occur in a particular installation. If this equipment does cause harmful interference to radio or television reception, which can be determined by turning the equipment off and on, the user is encouraged to try to correct the interference by one or more of the following measures:

- Reorient or relocate the receiving antenna.
- Increase the separation between the equipment and receiver.
- Connect the equipment into an outlet on a circuit different from that to which the receiver is connected.
- Consult the dealer or an experienced radio/TV technician for help.

Caution: Any changes or modifications to this device not explicitly approved by manufacturer could void your authority to operate this equipment.

### RF Exposure Information

The device has been evaluated to meet general RF exposure requirement. The device can be used in portable exposure condition without restriction.