

# Instruction of RGB RZR Fang Lights

## ACCENT LIGHT KIT

### BEFORE YOU BEGIN

Read these instructions and check to be sure all parts and tools are accounted for. Please retain these installation instructions for future reference and parts ordering information.

### KIT CONTENTS



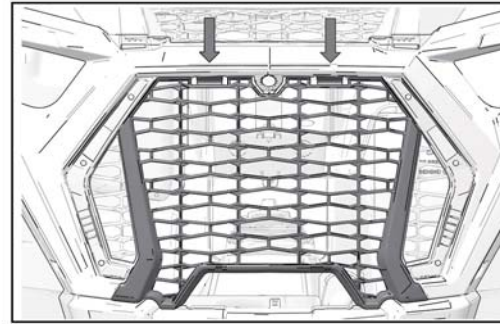
REF	QTY	PART DESCRIPTION
1	1	Assembly–Light, Accent, Right-Hand
2	1	Assembly–Light, Accent, Left-Hand
3	1	Control Unit Box

### IMPORTANT

Your Accent Light Kit is exclusively designed for your vehicle. Please read the installation instructions thoroughly before beginning. Installation is easier if the vehicle is clean and free of debris. For your safety, and to ensure a satisfactory installation, perform all installation steps correctly in the sequence shown.

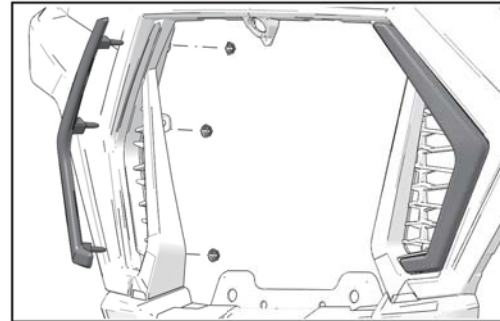
### GRILLE REMOVAL

1. Carefully push down on two tabs to disengage grille from front fascia. Tilt top outward to remove from vehicle.

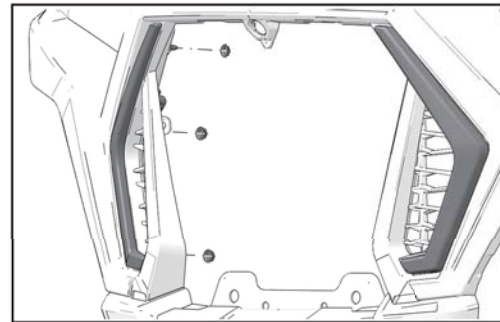


### ACCESSORY INSTALLATION

1. Remove each trim piece from front fascia. Keep three speed-nuts.



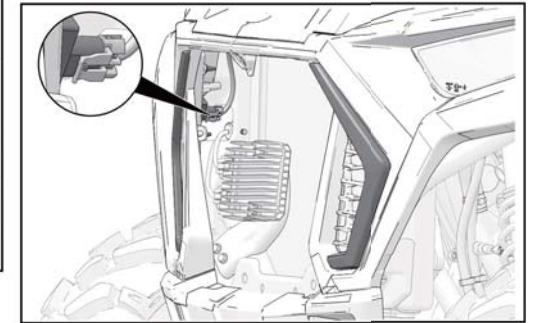
2. Install each accent light with three speed-nuts.



3. Connect chassis harness connector to rear of each accent light.

#### TIP

Remove cap from connector (if equipped).



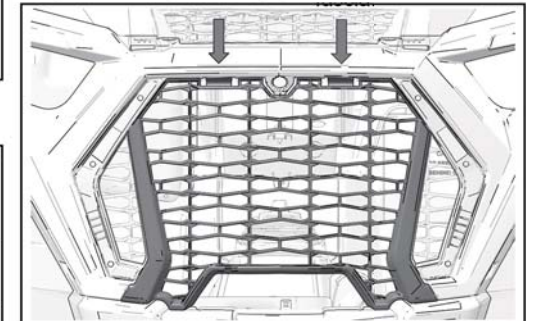
### VEHICLE REASSEMBLY

#### GENERAL

1. Turn vehicle on and verify accent lights operate when headlights are on.

#### GRILLE INSTALLATION

1. Tilt bottom of grille into front fascia.
2. Push top into place until top tabs engage with front fascia.



## APP Download

### Scan the QR code

iOS and Android systems can download the "Magic Lantern" APP by scanning the QR code. Open the browser or other tools with "Scan QR code" function, scan the "Magic Lantern" QR code as below:



## APP Operation

(1) Click on the LotusLantern APP icon, enter the APP page:



(2) After entering the APP interface, if Bluetooth is not enabled, "an application wants to enable the Bluetooth function of this device." Click [Allow]



Android

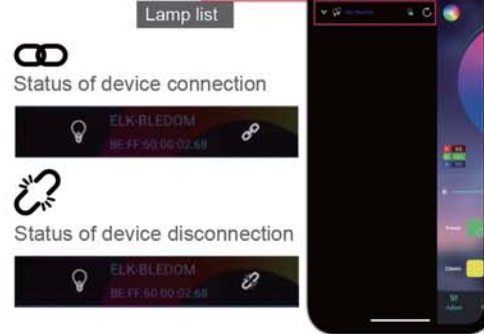


iOS

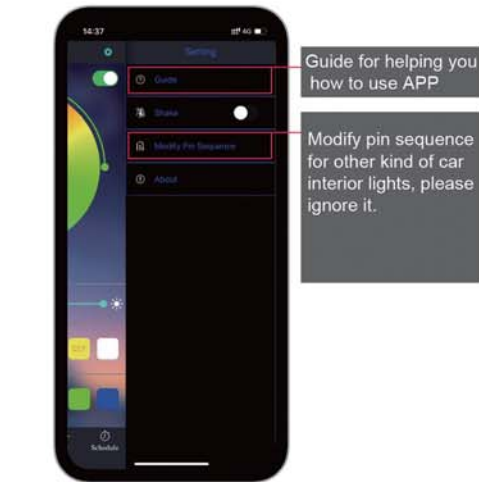
(3) Switch to color and brightness interface:



(4) Click to show the lamp list, view lamp list: Bluetooth auto connect after search for devices



(5) Setting



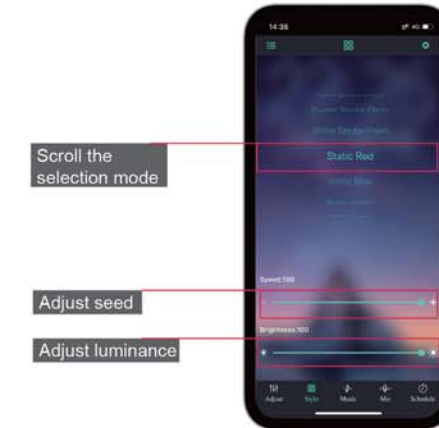
Switch to the modify pin sequence interface:



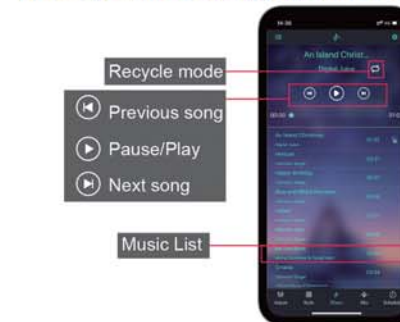
(6) Click to RGB manual adjustment view:



(7) Switch to the mode interface:



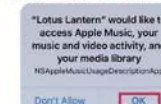
(8) Switch to the music rhythm interface:



Authorizing the below operation Click ALLOW/OK

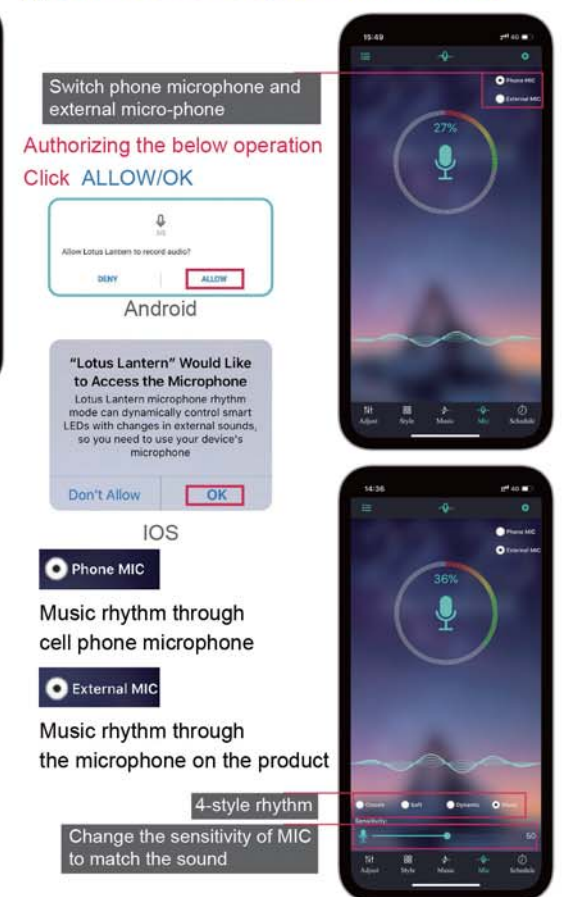


Android

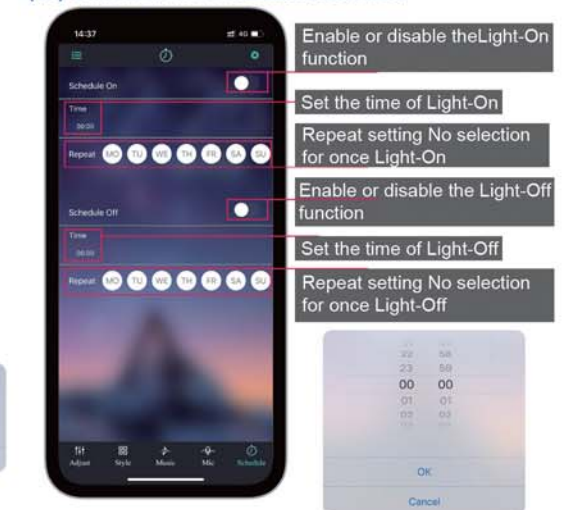


iOS

(9) Switch to the microphone rhythm interface:



(10) Switch to the schedule interface:



### FCC Warning Statement

Changes or modifications not expressly approved by the party responsible for compliance could void the user's authority to operate the equipment. This equipment has been tested and found to comply with the limits for a Class B digital device, pursuant to Part 15 of the FCC Rules. These limits are designed to provide reasonable protection against harmful interference in a residential installation. This equipment generates uses and can radiate radio frequency energy and, if not installed and used in accordance with the instructions, may cause harmful interference to radio communications. However, there is no guarantee that interference will not occur in a particular installation. If this equipment does cause harmful interference to radio or television reception, which can be determined by turning the equipment off and on, the user is encouraged to try to correct the interference by one or more of the following measures:

- Reorient or relocate the receiving antenna.
- Increase the separation between the equipment and receiver.
- Connect the equipment into an outlet on a circuit different from that to which the receiver is connected.
- Consult the dealer or an experienced radio/TV technician for help.

This device complies with part 15 of the FCC Rules. Operation is subject to the following two conditions: (1) This device may not cause harmful interference, and

(2) this device must accept any interference received, including interference that may cause undesired operation.

### RF Exposure Statement

To maintain compliance with FCC's RF Exposure guidelines, This equipment should be installed and operated with minimum distance of 20cm the radiator your body. This device and its antenna(s) must not be co-located or operation in conjunction with any other antenna or transmitter.