

WIFI PT CAMERA

Quick Manual for Android and iOS

Federal Communication Commission Interference Statement

This device complies with part 15 of the FCC Rules. Operation is subject to the following two conditions: (1) This device may not cause harmful interference, and (2) this device must accept any interference received, including interference that may cause undesired operation.

This equipment has been tested and found to comply with the limits for a Class B digital device, pursuant to part 15 of the FCC Rules. These limits are designed to provide reasonable protection against harmful interference in a residential installation. This equipment generate, uses and can radiate radio frequency energy and, if not installed and used in accordance with the instructions, may cause harmful interference to radio communications. However, there is no guarantee that interference will not occur in a particular installation. If this equipment does cause harmful interference to radio or television reception, which can be determined by turning the equipment off and on, the user is encouraged to try to correct the interference by one or more of the following measures:

- Reorient or relocate the receiving antenna.
- Increase the separation between the equipment and receiver.
- Connect the equipment into an outlet on a circuit different from that to which the receiver is connected.
- Consult the dealer or an experienced radio/TV technician for help.

Radiation Exposure Statement:

This equipment complies with FCC radiation exposure limits set forth for an uncontrolled environment.

This equipment should be installed and operated with minimum distance 20cm between the radiator and your body.

Caution:

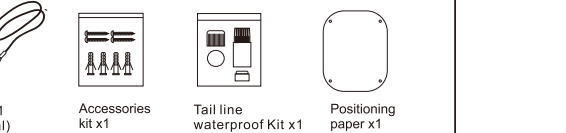
Any Changes or modifications not expressly approved by the party responsible for compliance could void the user's authority to operate the equipment.

This transmitter must not be co-located or operating to conjunction with any other antenna or transmitter.

That separate approval is required for all other operating configurations, including portable configurations with respect to Part 2.1093 and different antenna configurations.

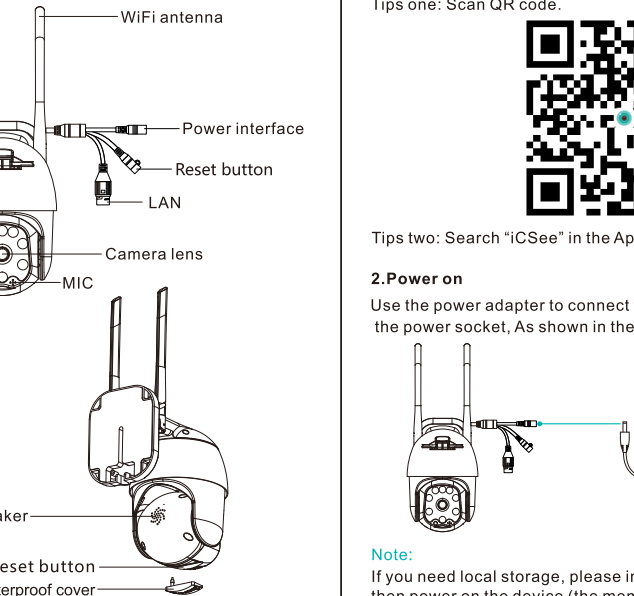
Packing list

After open packing list box, please check product body and accessories as below:



Interface

Before use, please pay attention to the interface and button of camera.

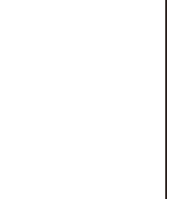


Note:
Reset button : Long press to restore the camera to factory settings.

Operation

1.Download APP

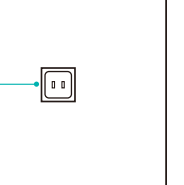
Tips one: Scan QR code.



Tips two: Search "iCSee" in the App store and download.

2.Power on

Use the power adapter to connect the camera power interface and the power socket, As shown in the figure below.



Note:

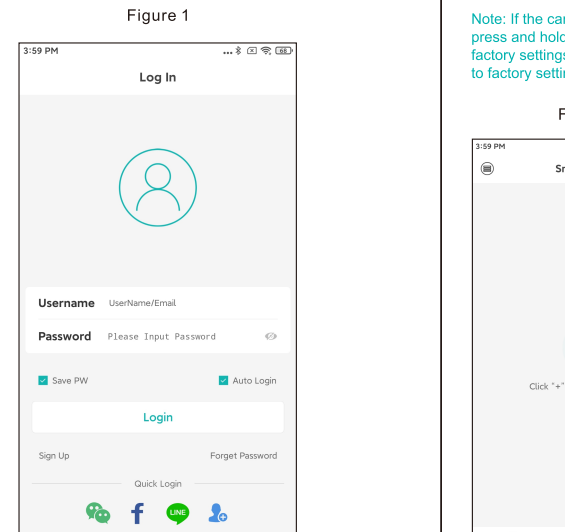
If you need local storage, please install the memory card firstly, then power on the device (the memory card does not support hot swapping, please plug and unplug the memory card when the device is powered off). Cloud storage is recommended, which is safe and convenient. Details See "Step 4" for operation.

3.Camera configuration

1.Wireless network configuration:

01.User login

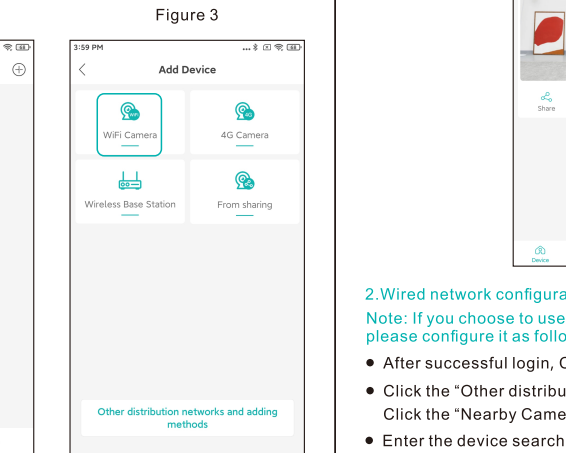
- Connect your phone to WiFi.
- Open the iCSee app, register an account and login(Figure 1).



02.Quick configuration

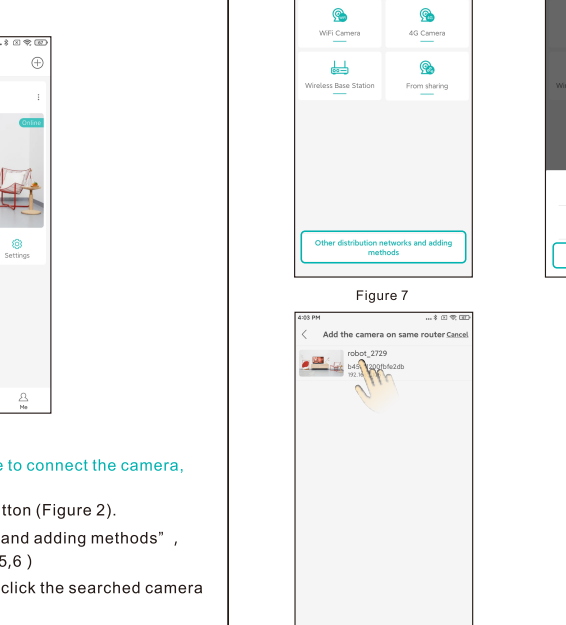
- After successful login, Click the "+" button (Figure 2).
- Click the "WiFi Camera" (Figure 3) .
- Set network configuration according to the camera's voice prompts and the APP interface step-by-step guide. When the camera emits a "Connect router successfully" prompt, it means that the camera has successfully configured the network.

Note: If the camera does not have a prompt sound for a long time, you can press and hold the camera Reset button until you hear the prompt " Restore factory settings, please do not power off "and release it to restore the camera to factory settings and then configure the network.



4.Cloud storage

- Steps to open cloud storage: click the "cloud storage" or "cloud" icon in the device list interface (Figure 8), and follow the guidance of the app interface to understand and open the cloud storage package, with a variety of packages available.



FAQ

Q: How do cameras store video?

- A: 1.Local TF card storage, maximum support up to 128G TF card after full automatically delete earlier video, overwrite video.
- 2.Cloud storage.

Q: what should I do if forget the device password?

- A: Re-connect and set a new password after the device is restored to factory settings.
- Note:** The device password involves privacy security, please be careful.

Q: How to do if the camera is not connected or offline?

- A: 1.Check if the camera power or network of router normally .
- 2.Plug the camera power to restart camera.
- 3.Restore the camera to factory settings.

Q: Is 5g router supported ?

- A : If you use 5g router, 5G and 2.4G use the same connection hotspot (that is, SSID is the same), you can connect directly. If 5G and 2.4G are not the same connection hotspot (that is, SSID is different, generally SSID of 2.4G is xxxx-2.4G, SSID of 5G is xxxx-5G), please connect WiFi of mobile phone to hotspot of xxxx-2.4G of router before configuring camera.

Warranty Card

Notice

- 1. Please change the user password while using this product to avoid being misappropriated by criminals.
- 2. Do not install the device in a place that is damp, dusty, or accessible to children.
- 3. Please use and store within the allowable temperature and humidity range, and do not disassemble the equipment at will.

Directions

- 1. Please refer to the actual product, the manual is for reference only.
- 2. The APP and product firmware will be updated from time to time. You can upgrade to the latest firmware online by yourself without notice. The manual is for reference only.
- 3. The manual may contain technically inaccurate parts or parts that are inconsistent with product functions or printed errors. Please refer to our company's final interpretation..

Warranty period: one year.

This warranty card is only for our company's products.