



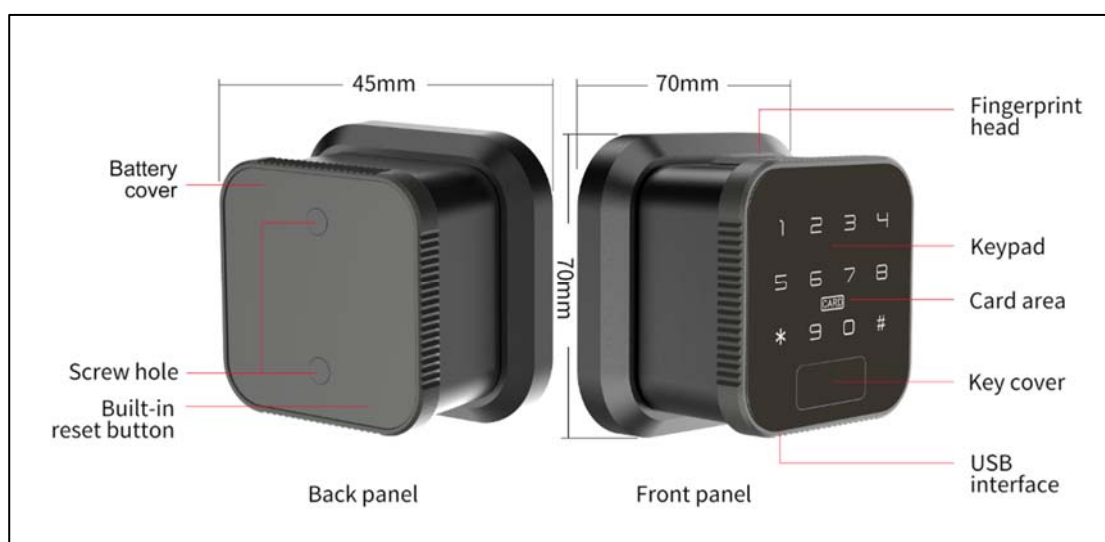
# SMART LOCK INSTRUCTION

Model: B3

Ver.21103001

Caution: The key is used as an emergency unlocking method,  
please do not put it indoors!

## ➤ Product schematic diagram



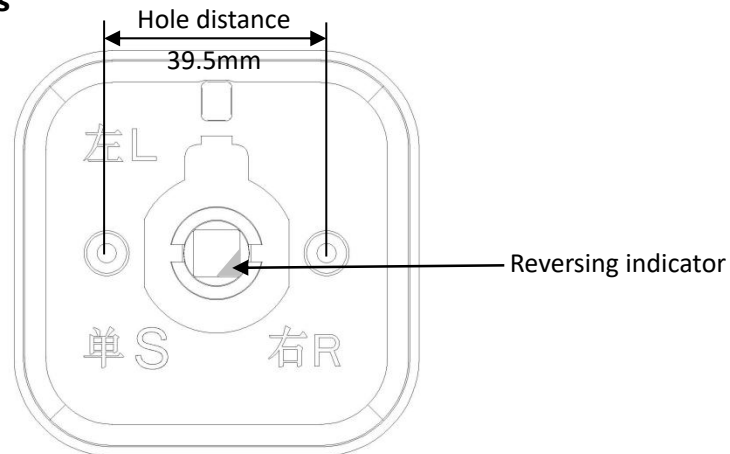
## ➤ Technical parameters

Material	Zinc alloy	Colour	Black /Coffee gold
Information capacity	300 pcs Fingerprints: 50pcs	Fingerprint response speed	≤0.3S
Fingerprint head type	semiconductor	Static power	< 80ua
Power supply	4 AAA batteries	product weight	0.9KG
Emergency interface	Micro USB	Applicable door thickness	35~55mm
Unlocking method	Fingerprint, password, APP, Bluetooth, key		

Applicable door	Office doors, home wooden doors, etc.
-----------------	---------------------------------------

## ➤ Installation guide

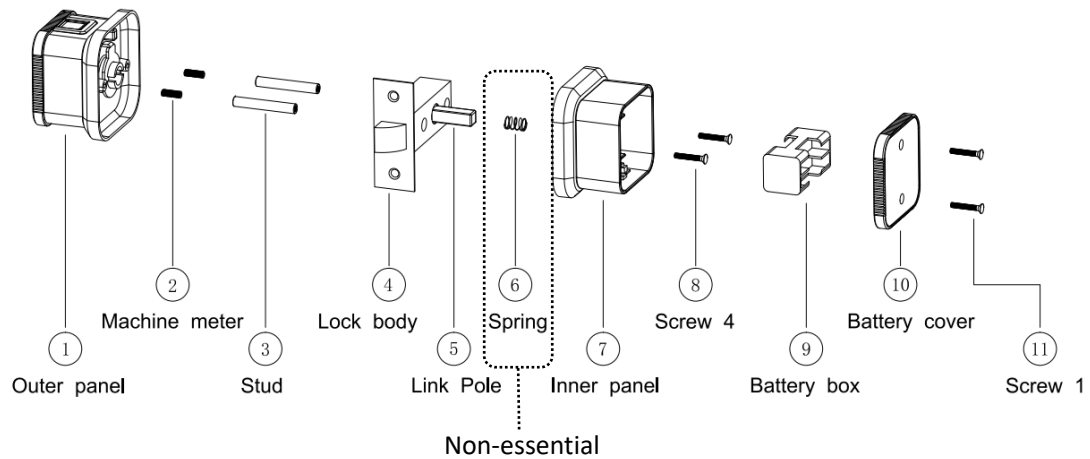
### 1. Reversing instructions



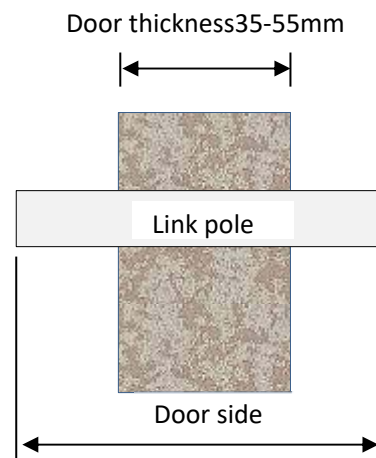
Firstly, confirm whether the lock body is a "single tongue lock body" or a "double tongue lock body", then, take out the Link pole from the accessory kit and insert it into the hole on the front panel, rotate the Link pole to adjust the door opening direction.

- 1) When using the "single tongue lock body", please turn the "reversing indicator" to the "S".
- 2) When using the "double tongue lock body", if opening the door on the left, the "reversing indicator" is aligned with the "L"; when opening the door on the right, the "reversing indicator" is aligned with the "R".

### 1. Installation Notes



1) Before installation, measure the thickness of the door and take out the Link Pole ⑤ from the accessory kit. Confirm whether the length of the Link pole is appropriate. The length of the Link pole generally exceeds the actual thickness of



Link pole length = Actual thickness of the door + 38mm

the door by 35~40mm. If the length is too long, please cut it off by yourself;

- 2) First, install the lock body according to the door opening direction, and adjust the direction of the "reversing indicator" on the front panel of the lock;
- 3) Find 2 machine meters ② screw them to the front panel ①, and then connect the studs ③ to the machine meters ② respectively;
- 4) Take out the square pole ⑤, pass through the lock body ④ that fixed on the door, arrange the front panel data cable, pass the data cable through the hollow Link pole and fix the front panel on the door, the Link pole ⑤ must be inserted into the Link pole hole on the front panel, do not press the data cable;
- 5) Put the spring ⑥ into back plate ⑦, connect the back panel ⑦ with the Link pole ⑤, adjust the screw holes of the back panel, align the front and back panels,

and use the screws ⑧ to lock the front and rear panels; Adjust the position, manually rotate the front and back panels left and right, and check whether the left and right rotation is normal;

6) Adjust the inner and outer plates, manually rotate the outer and inner panels left and right, finally, check whether they rotate normally;

7) Install 4 AAA batteries in the battery box⑨, put them into the back panel ⑦,connecting power line, close the battery cover ⑩, fasten the screws ⑪, and finish the installation;

### ➤ **System settings**

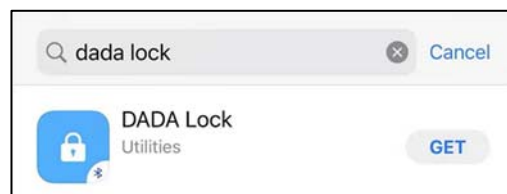
In the initial state, any fingerprint, password "123456" can be unlocked, and it will automatically become invalid after setting the super administrator.

Download the APP that named "DADA LOCK" on the phone, then turn on the Bluetooth function of the phone and enter the downloaded APP.

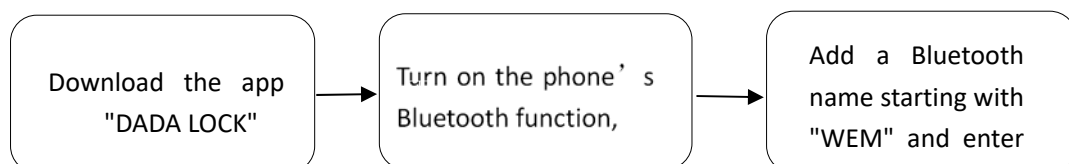
Android system  
Scan code to download



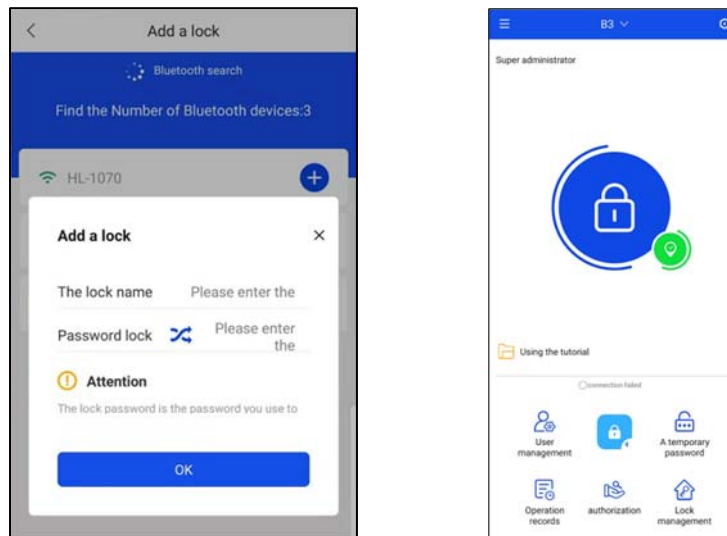
Google App Market download : DADA LOCK



The procedure is as follows:



Enter the add lock interface, enter the lock name and lock password (this password is the super password, which is the only highest authority), and click "OK".



## 1. User Management

Add user information, the number of secondary administrators is 10, and the rest are ordinary users. When the add information box interface pops up, users could directly enter the information of any unlocking method of "fingerprint", "password" (the same unlocking key collection times are: fingerprint collection 5 times, password entry 2 times). When collecting fingerprints, put your finger on the fingerprint head and make the collection area as larger as possible. When the fingerprint is repeated, it needs to be re-entered until it prompts "entry completed".

When entering the password, the effective password is 6 digits, after entering, press the "#" key to confirm.

## 2. Temporary password

Temporary passwords are divided into four modes, which can be selected according to the actual needs.

Visitor mode: generate a temporary password according to the effective time, in minutes, effective times one time;

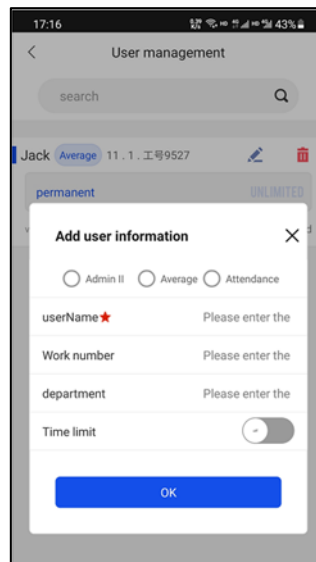
Moving mode: Generate temporary passwords based on the effective number of times, with the number of times as the unit, unlimited use time, and the effective number of door openings should not exceed 10 times;

Short-term rental mode: freely set the effective time and expiration time, the length of time can reach 15 years.

Nanny mode: freely set the effective time and expiration time every day, with days as the recurring unit.

## 3. Operation record

All lock operation records can be queried and exported. You must click "Sync" before viewing to avoid missing information.



#### 4. Authorization

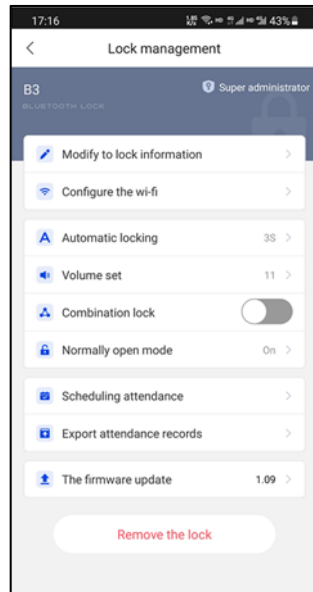
Remotely authorize other users to manage locks. Authorized users must register for the "DADA LOCK" APP. This function is limited to super administrators and is suitable for Apartment and Homestay management. It also can set the password validity period or number of times, modify or delete authorized users.

#### 5. Lock management

The lock management function can view and modify the super management password, set the lock time, sound setting, normally open mode, combination unlocking, software upgrade and other functions.

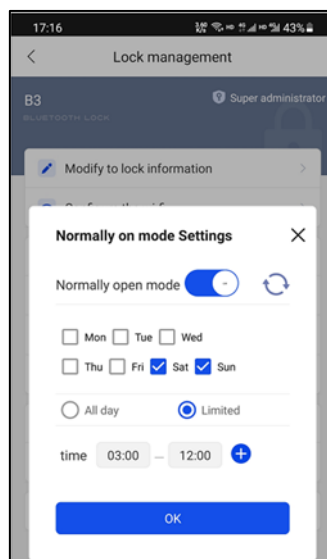
1) **Modify lock information**: Click in to view the super administrator password, modify and save at any time.

2) **Automatic lock**: It will be automatically locked after unlocking, and it can be set freely within the range of 3S~10S. The recommended setting for regular time is: 3S~5S.



3) **Sound setting:** The value 0 is silent mode, and the other numbers are the sound on state.

4) **Normally open mode:**



① Turn on the normally open mode: turn on the normally open mode, set the time to be normally open, click the sync button, after the APP is set, the lock must be opened once before the normally open function takes effect; in the normally open mode, press the number key "\*" Turn off the lock at any time, or turn off the normally open mode on the APP;

② Turn off the normally open mode: open the APP, click on the normally open mode to close, refresh the synchronization;

5) **Combination unlock:** After setting the fingerprint, password, when this function is enabled, the lock can be unlocked only when any two unlocking methods are correct (except for administrators) .

6) **Firmware upgrade:** When the latest software version is available, in the Bluetooth connection state, you can upgrade the latest firmware online in the APP. The upgrade takes about 1 minute. Please do not operate the phone during the upgrade process. If there is an interruption or no response, please exit and re-upgrade. After the upgrade is successful, if the lock does not respond, please remove the battery and re-energize it.

➤ **Restore initial factory settings**

Physical reset: Open the battery back cover and press and hold the black button on the reset board for 5 seconds. After hearing "Di~", the reset is successful. After reset, the password is the initial password "123456" or any fingerprint can be unlocked.

➤ **Low battery alarm reminder**

When the power is low, the lock will emit a continuous "Di Di Di....." sound prompt, the battery must be replaced in time to keep the lock in normal use. In an emergency, you can use the USB external power supply (5V) to supply power.

➤ **Description of alarm tone**

1. **Low battery alarm reminder:** When the battery is low, the reminder sound will be "Di Di Di....." reminder sound for many times. The battery must be replaced in time to keep the lock in normal use. In an emergency, you can use the USB external power supply (5V) to supply power.

2. **Information input error prompt:** when the unlocking information is entered incorrectly, the prompt sound will be 2 consecutive "Di Di..." prompt sounds, if the continuous input error exceeds 5 times, the prompt sound will be 3 times long "Di..." ... sound, the system is locked for 90 seconds (removal method: Other unlocking methods except password unlock or wait for 90 seconds).

3. **Combination unlock prompt:** When the combination mode is turned on, after the first unlocking information is entered, a "Di..." sound will be emitted at an interval of 3 seconds.

4. **Reset prompt:** long press the reset button, the prompt sound is 5 consecutive "Di Di Di...", and a long "Di..." prompt sound.



This device complies with part 15 of the FCC rules, Operation is subject to the Following two conditions(1) this device may not cause harmful interference and (2)this device must accept any interference that may cause undesired operation

This device has been tested and found to comply with the limits for a Class B digital device,pursuant to part 15 of the FCC Rules. These limits are designed to provide reasonable protection against harmful interference in a residential installation.This device generates,use and can radiate radio frequency energy and,if not installed and used in accordance with the instruction,may cause harmful interference to radio communications.

However , there is no guarantee that interference will not occur in a particular. If this device does cause harmful interference to radio or television reception, which can be determined by turning the device off and on,the user is encouraged to try to correct the interference by one or more of the following measures:

- Reorient or relocate the receiving antenna.
- Increase the separation between the device and receiver.
- Connect the device into an outlet on a circuit different from that to which the receiver is connected.
- consult the dealer or an experienced radio/TV technician for help

Changes or modifications not expressly approved by the party responsible for compliance could void the user' s authority to operate the equipment