

For more contents of other parts about the user manual, please visit our website and download the full electronic manual for more support:

www.atnedcvh.com

The password for extracting the user manual:

ATNEDCVH-TKS

Or scan the QR code to enter the download page of the website :



Made In China

ATNEDCVH[®]

USB Printing / Sharing Server User' s Manual For Win/Mac

Download the full version of user manual:

www.atnedcvh.com

The password for extracting the user manual:

ATNEDCVH-TKS

Get support:

atnedcvh@foxmail.com

REMARK

The company reserves the right to modify the packaging of the products and related documents without notifying the readers of this manual.
©2021 All rights reserved by Shenzhen Aqida Technology Co., Ltd

List of contents :

1. Diagram of the product use process

2. Set up the wireless network connection

The way 1: set up the wireless connection on a PC

The way 2: set up the wireless connection on a Phone

3. Set up the wired network connection

- Set up the wired network connection with a router
- Set up the wired network connection with a switch

4. Install a local (LAN) printer

- Quickly install a local (LAN) printer
- Manually install a local (LAN) printer
 - Install a local (LAN) printer on WIN 10
 - Install a local (LAN) printer on WIN 7

5. Share a USB device (s) (MFP series only)

6. How to use a printer / scanner by sharing a USB device (s)

(MFP series only)

7. Schedule reboot function

8. Reset the server to factory settings

1. Diagram of the product use process

Wireless printing:

Set up the wireless connection on a PC or a phone → Install your wireless printer

→ After installation, print a test page.

Wired printing:

Connect the server to your router / switch - Set up the wired network connection

→ Install your printer → After installation, print a test page.

Share a USB device (s) (MFP series only) :

Set up the wireless or wired connection of the server with your Lan

→ Run the "USB Connection Tools" → add a USB sharer → Enter the IP address of the server → Connect to a USB device(s)→ Using a USB device(s).

*Please set up the wireless connecting first,
and then set up the wired to avoid errors.

All details, Please read following contents.

2. Set up the Wireless network connection

Tips:

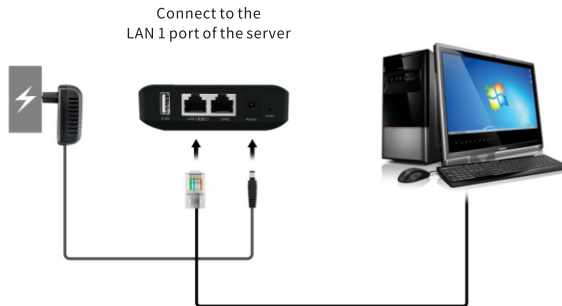
You can set up the wireless connection in any device in your network (LAN), which it can be any PC or phone connected to your work network and it does not need to be set on each computer that needs to print.

After the wireless connection be set, you can use the wireless IP address got to add your wireless printer for any PC connected to the LAN.

The way 1:

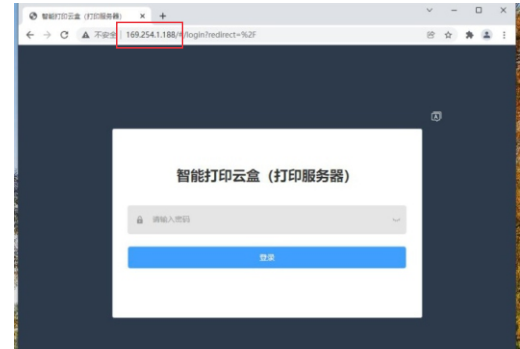
Set up the wireless connection with your Lan on a PC.

1. Connect the LAN 1 (配置口) (configuration port) of the server to RJ45 of your PC with a network cable, as shown in the figure:



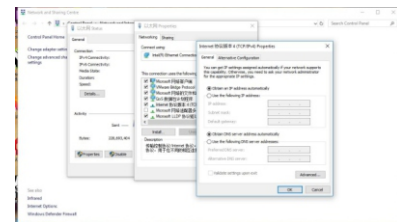
2. Open a browser on your PC and enter the default IP of LAN 1 (配置口) (configuration port) : 169.254.1.188 (Look at the label on the bottom of the product), and enter the login page of server background.

Please don't use Internet Explorer, recommend Google or Firefox.



If the page of the IP can't be opened, please check whether your PC network is "Obtain an IP address automatically" or whether the server is the factory setting status.

If not, please change your PC network to "Obtain an IP address automatically" or reset the server to factory settings. (if you can open the page normally, please ignore this step)



IP settings

IP assignment:

Automatic (DHCP)

Edit

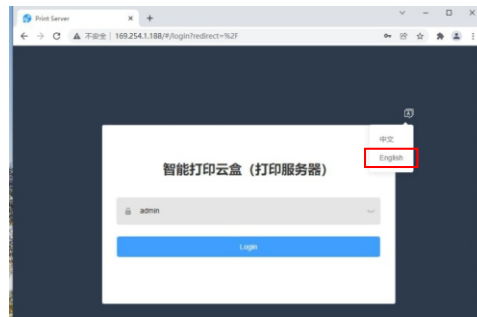
If the page of server background can't be normally opened, please check the following items:

- Whether the computer network is "Obtain an IP address automatically" / "automatic DHCP" or whether the server is in the factory setting status.
- Don't use Internet Explorer. Google browser or Firefox browser is recommended. You can try to switch the browsing mode, or change the browser to open the IP.
- Please check whether the network cable connection between your PC and the server is correct. whether your PC connected to the "LAN1 配置口" of the server.

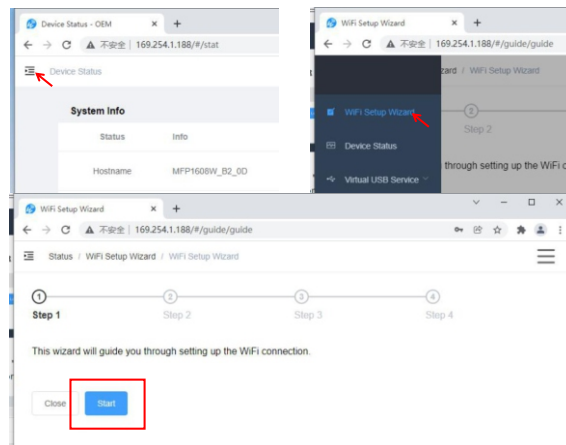
You can try the following:

- ① Reconnect your PC to the "LAN1 配置口" of the server
- ② Change the browser and then re enter to open the IP
- ③ Change the IP settings to "Obtain an IP address automatically" / "automatic DHCP"
- ④ Restart the PC and re open it
- ⑤ Change to another PC and re open it
- ⑥ Reset the server to the factory settings. Please refer to "8. Reset the server to factory settings"

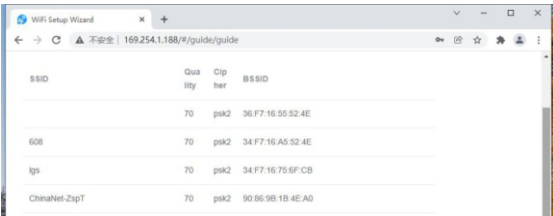
The languages showed can be switched on the icon in the upper right corner. Enter the user name and password to log in (the user name and password are: admin)



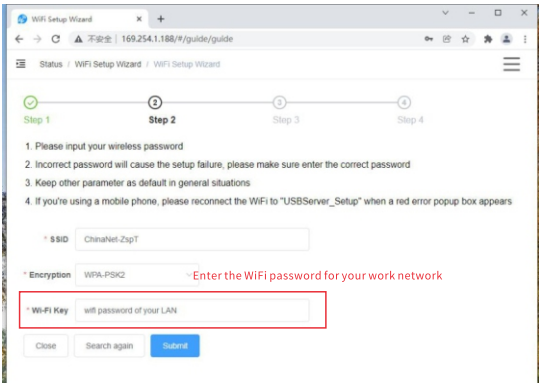
3. On the server background, click the "WiFi Setup Wizard", and then click "Start" to start setting up the WiFi wireless connection.



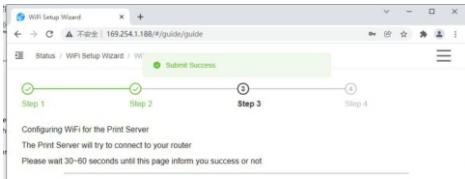
4. Click the Wifi name of your Lan to select the wireless network.



5. Enter the password of your WiFi and click “ Submit ” .



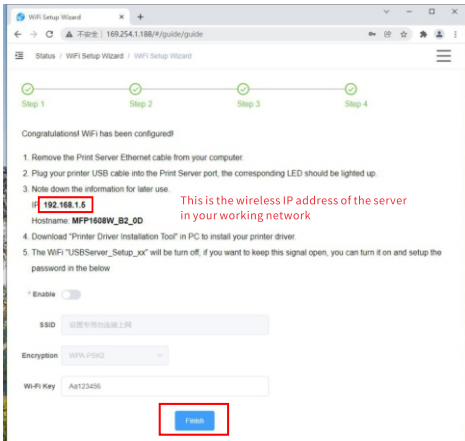
6. Please wait about 1 minute. After the data is written to the server, the server will connect to your wireless automatically.
Then the wireless IP address of the server will be displayed on the page.



The wireless connection setup of the server has finished. Please copy or record the wireless IP address got (in the red box) and click "Finish" .

If some error happened, please follow the prompt (If the password was error, please check your WiFi password)

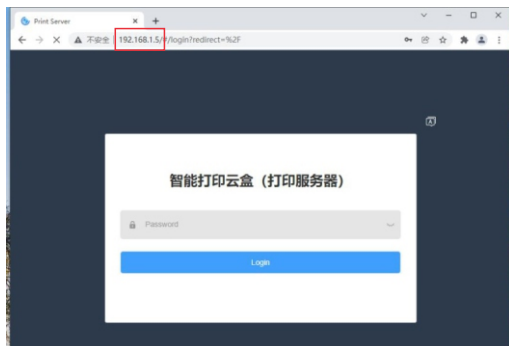
When add a wireless printer, the wireless IP address of the server is needed to use. The wireless printer can't be added without the wireless IP address.



How to confirm whether the wireless connection setting of the server is successful?

In your PC browser open the wireless IP address you just got, If you can open the page normally, the setting is successful.

As shown in the picture below:



Tips:

If the page can't be opened normally with the wireless IP address, you can wait a moment and open it.

If it still can't be, it may be that the server and your network can't communicate. Please reset the server to the factory settings, and then re-set it again.

You can also set up the wireless connection by your mobile phone.

After the wireless connection of the server is set up and the wireless IP address is got, Next, we can use this IP address to add a wireless printer to any MAC or PC in your working network !

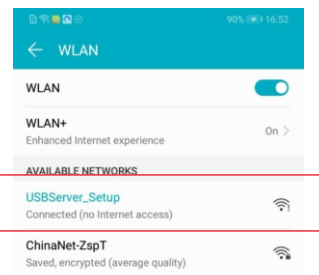
The way 2: Set up the wireless connection with your Lan on a phone

If the wireless connection can't be set up on a PC, you can set up the wireless connection on a phone.)

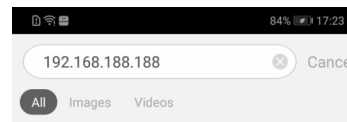
When set up the wireless network connection on a phone, please make sure that the LAN1 and LAN2 ports of the server are not wired to any devices (routers or switches).

Otherwise, When the wired connection is disconnected the wireless IP of the server won't accessed. And you need to reset the server to the factory settings, and then re-set it.

1. Open the WiFi list of yours phone, find and connect the WiFi of the server. The WiFi of the server is: USBServer_Setup_ xxx

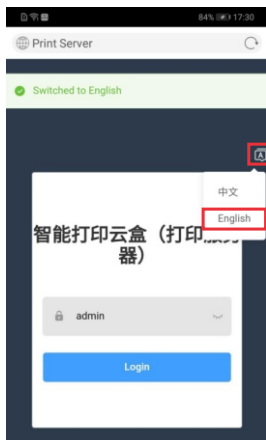


2. Open your phone browser and enter the default IP (192.168.188.188) of the server and open it.

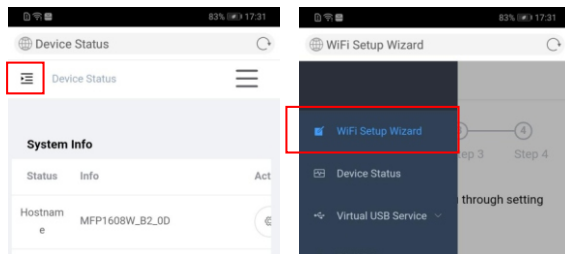


3. The Languages can be switched on the icon in the upper right corner.

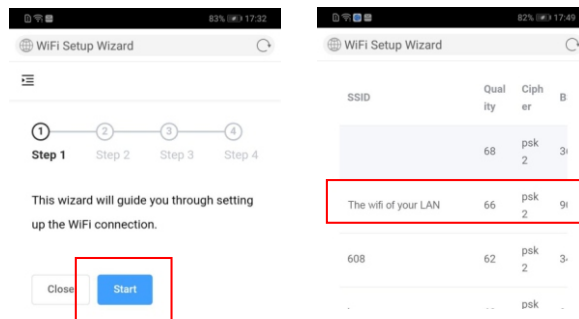
Then enter the user name and password (default is: admin) to log in and enter the server background page.



4. Click "III" in the upper left corner, and then click "WiFi Setup Wizard" to enter the WiFi connection setting page.

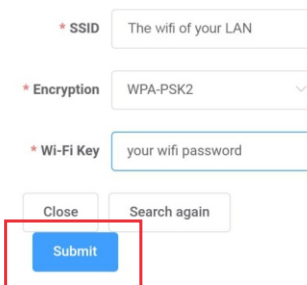


5. Click "Start", the server will automatically search for WiFi signals nearby, and click to select your wireless network / WiFi name.

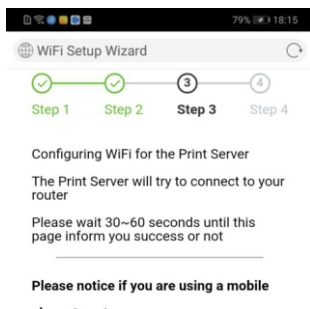


6. Enter the password of your router / WiFi, and then click "Submit".

"USBServer_Setup" when a red error popup box appears

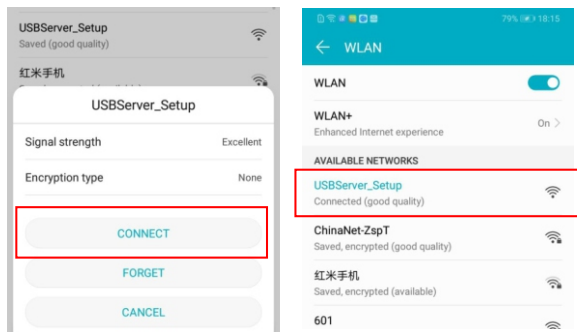


7. After submit, wait for 5-10 seconds.



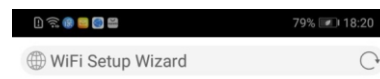
8. Then, the phone will connect to the wifi of your LAN and disconnect from the server. At this time, you need to reopen your WiFi list and reconnect to the WiFi of the server: USBServer_Setup_ xxx

Then return to the browser's wireless connection setting page again. This step is very important !



9. After return to the browser's wireless connection setting page, wait for 5~ 10 seconds. Then the server's wireless IP address will be shown in the page. Please copy or record the IP address.

That's the wireless IP address of the server. Later, you can add a wireless printer for PC or MAC in the LAN network with the IP address.



1. Remove the Print Server Ethernet cable from your computer.
2. Plug your printer USB cable into the Print Server port, the corresponding LED should be lighted up.
3. Note down the information for later use.

IP: 192.168.1.5

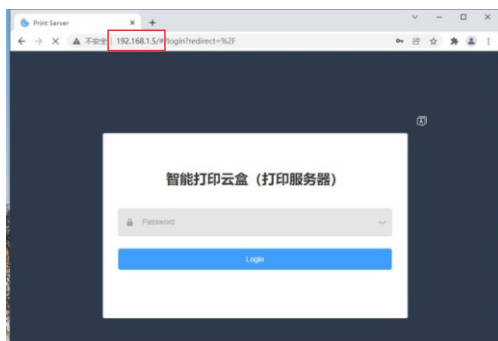
Hostname: MFP1608W_B2_0D

4. Download "Printer Driver Installation Tool" in PC to install your printer driver.
5. The WiFi "USBServer_Setup_xx" will be turn off, if you want to keep this signal open, you can turn it on and setup the password in the below

* Enable ☐

Test whether the wireless connection settings were successful.

After setting finished, you can enter the wireless IP address of the server in a browser of any computer in your LAN network, and then if the background login page can normally be opened with the IP, it means that it has been successful.



Tips:

If the wireless IP address page can not normally be opened, you can wait a moment and open it. If it still can't be that it may be that they can't communicate for the server and your network. Please reset the server to the factory settings, and then re set it again.

Or you can also set up the wireless connection on a PC.

After setting successfully, Next, we can add a wireless printer to PC or MAC in your LAN network with the IP address.

When set up the wireless connection on a phone, please make sure that the LAN1 and LAN2 ports of the server are not wired to any devices (routers or switches).

Otherwise, When the wired connection is disconnected the wireless IP of the server won't accessed. And you need to reset the server to the factory settings, and then re set it.

For more contents of other parts about the user manual, please visit our website and download the full electronic manual for more support:

www.atnedcvh.com

The password for extracting the user manual:

ATNEDCVH-TKS

Get support:

atnedcvh@foxmail.com

To dear customers of ATNEDCVH:

Thank you for choosing ATNEDCVH !

Since we have been selling this product only in The Chinese market, some installation software and setting interface may be in Chinese. We are developing the English version software and system of the product, which may take some time. But it's be believe that it will be finished soon.

We are a company focusing on products and technology. Creating and developing products that meet market demand and are popular with customers is our greatest pursuit.

Please rest assured that to use our products and related software. All of they are green and safe, and will not pose any threat to your computer and information.

For a company that develops and sells products.What products do customers need? What products does the market need? How can we win the recognition of customers and obtain huge business returns? These are what we care about most. The other things are meaningless and valueless to us. We're not 007!

If you are worried about your network security or privacy disclosure, you can also delete these software from your computer after completing all settings and installation, and they can be no longer retained in your computer.

(Please don' t delete the "USB connecting tool", For when connecting to share your USB devices, you also need to run it to connect to your USB devices. The WPS series products do not have the function of "sharing USB devices", so it do not need to use this tool. but MFP series products.)

Or you can completely manually choose to install a printer and set up the network connection.

If you have any problems when use the product, please feel free to contact us!

Thank you,
Best regards.

FCC WARNING

This device complies with part 15 of the FCC Rules. Operation is subject to the following two conditions: (1) this device may not cause harmful interference, and (2) this device must accept any interference received, including interference that may cause undesired operation.

Any changes or modifications not expressly approved by the party responsible for compliance could void the user's authority to operate the equipment.

NOTE: This equipment has been tested and found to comply with the limits for a Class B digital device, pursuant to Part 15 of the FCC Rules. These limits are designed to provide reasonable protection against harmful interference in a residential installation. This equipment generates, uses and can radiate radio frequency energy and, if not installed and used in accordance with the instructions, may cause harmful interference to radio communications.

However, there is no guarantee that interference will not occur in a particular installation.

If this equipment does cause harmful interference to radio or television reception, which can be determined by turning the equipment off and on, the user is encouraged to try to correct the interference by one or more of the following measures:

- Reorient or relocate the receiving antenna.
- Increase the separation between the equipment and receiver.
- Connect the equipment into an outlet on a circuit different from that to which the receiver is connected.
- Consult the dealer or an experienced radio/TV technician for help.

To maintain compliance with FCC's RF Exposure guidelines, This equipment should be installed and operated with minimum 20cm distance between the radiator and your body: Use only the supplied antenna.