

User Manual



Y486AP Label Printer



Scan QR code for
installation tutorial



扫码获得安装教程



สแกนคิวอาร์โค้ดเพื่อ
ดูวิธีการติดตั้ง



Quét mã QR để có
hướng dẫn cài đặt



Scan kode QR untuk
mendapatkan tutorial
install



Imbas kode QR untuk
mendapatkan tutorial
install

Visit <https://help.flashlabel.com> to download driver and see installation tutorial in multiple languages. Send E-mail to help@flashlabel.com for help!

Thank you for choosing our printer.
please read this manual carefully and keep it for future reference.

Content

1.Quick Setup Guide	01
2.Packaging List.....	02
3.Printer Connection.....	03
4.Use WPS Mode to Configure the Printer Network	04
5.Setup App to Configure the Printer Network.....	06
6.Label Loading And Calibration.....	10
7.Connect the Printer with Android phone.....	12
8.Connect the Printer with iOS phone	14
9.Connect the Printer on Computer with Windows	16
10.Connect the Printer on Computer with macOS.....	21
11.User Tips	25
12.LED Status.....	26
13.Feeder Button instructions	27
14.Safety notices.....	28
15.Maintenance	28
16.Specifications.....	29
17.Disposal.....	30
18.Pay Attention To.....	30
19.Contact US.....	31
20.Related Statements.....	32

QUICK SETUP GUIDE

Congratulations on your purchase of our Printer. We are your loyal business partner offering commercial solutions to batch labels printing.

Please take a moment to read this user guide as incorrect operation may result in unsatisfactory print quality, reduced user experience, or even damage to your printer or injury.

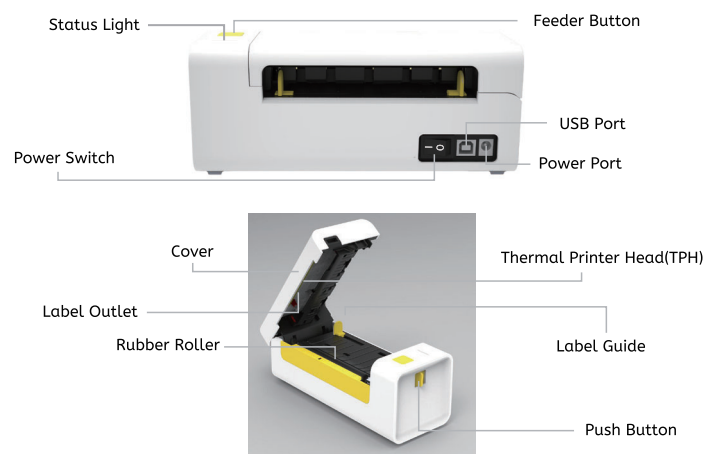
Y486AP is a thermal label printer which uses thermal label media without ink, toner and ribbon. It can print various labels for logistics, pricing, barcodes, QR codes, shipping label, badges, etc.

Original instructions for Thermal Label Printer, please read all manual instructions carefully before operating. We reserve clear interpretation of our user manual. The appearance of the product shall be subject to the product you received. Please forgive us that we won't inform you again if there is any technology or software updates on our product.

PACKAGING LIST

Packing List:

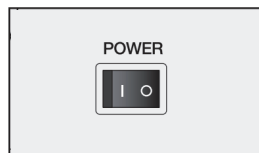
1x Label Printer	1x User Guide	1x Label Holder
1x Power Cable and Adapter	1x USB Printer Cable	
10x Free Fanfold Labels		



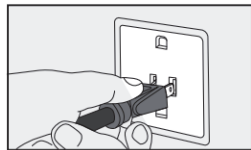
Thermal printer head (TPH) may be very hot. Please do not touch the printer head or parts around it after printing.

PRINTER CONNECTION

1. Quick Printer Connection.



2. Power off the device.



3. Connect the power cord and plug in the power supply.

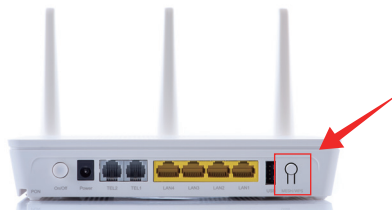


4. Power on the device.

USE WPS MODE TO CONFIGURE THE PRINTER NETWORK

1. Please connect the machine to the power supply and turn it on, referring to Page 3.
2. Ensure that your router is turned on and supports WPS setup feature.
3. Please locate and briefly press the WPS network button (Tips: Some routers may also refer to this button as the quick setup button) on the router to enable the WPS network mode. The router's indicator light will flash rapidly during this time.

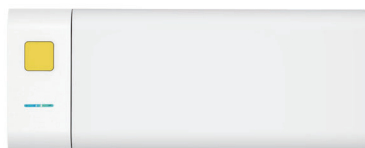
Note: Not all routers support WPS configuration mode, and some devices may require additional configuration when using WPS connection.



4. Press and hold the the status light button on the printer and release it after hearing four consecutive "beep" sounds to put the device into WPS pairing mode.

5. The device will automatically search for and connect to the WPS signal emitted by the router. At this time, the Green status indicator light on the top of the device is flashing.

6. When the status indicator light turns into a steady Blue light, it means that the device has successfully connected to the network.



7. After successful network configuration, you can proceed with printing images or files.

Tips: If you need to print custom-sized labels, we recommend using the FlashLabel APP. For downloading instructions, please refer to Page 7.

SETUP APP TO CONFIGURE THE PRINTER NETWORK

Wireless function only works with Y486AP.



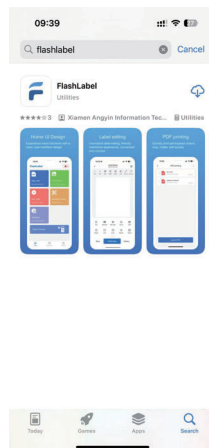
Scan this QR Code to see how to setup APP on iPhone or iPad.



Scan this QR Code to see how to setup APP on Android.

1. Please search and download "FlashLabel" on App Store (iOS) or Google Play (Android).

You can also scan QR Code below to download APP.

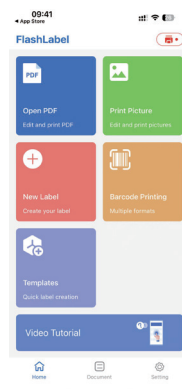


iOS

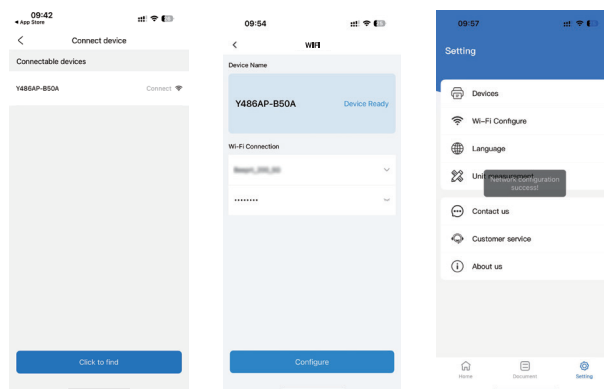


Android

2. Open "FlashLabel" run the app and click the red printer symbol on the upper right to use device Wireless.



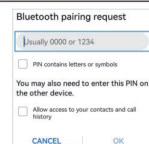
3. Select the Bluetooth device and make sure that the printer and your device are on the same Wi-Fi network. Enter the Wi-Fi password and click "Configure", as shown below:



When the printer successfully connects to the network, the light of the printer will change to a steady state Blue.

► **Note:**

If a PIN code is required when pairing bluetooth, please input 0000 or 1234.



LABEL LOADING AND CALIBRATION

Y486AP is capable of working with labels in various sizes, and it needs to learn your label properties before its first use.

To initiate Automatic Label Loading and run Intelligent Label Calibration, please follow these steps:

1.Power On

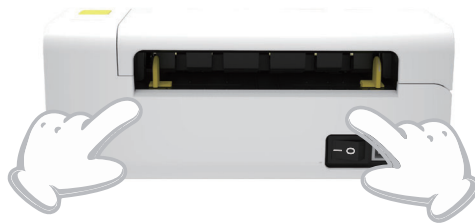
Turn on the power and wait for about 5 seconds until the printer is initialized.

2.Automatic Label Loading

Insert the label from the backside of the printer, the printer will load the label and move back and forth, then stop with the green light on. Not a single label will be wasted during this procedure.

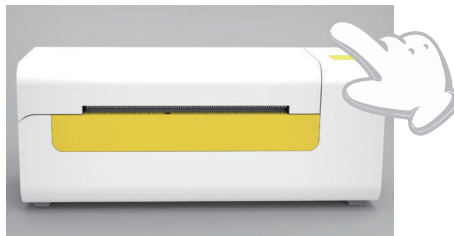


It's suggested to adjust the label guide to match the width of the label if necessary before the label is pushed in.



3.Intelligent Label Calibration

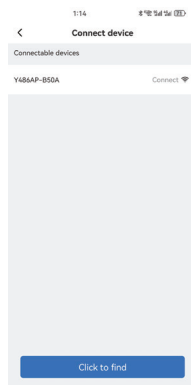
Press and hold the feeder button for about 3 seconds until you hear one beep then release, the label will move back and forth several times to calibration the label size, then you can start printing.



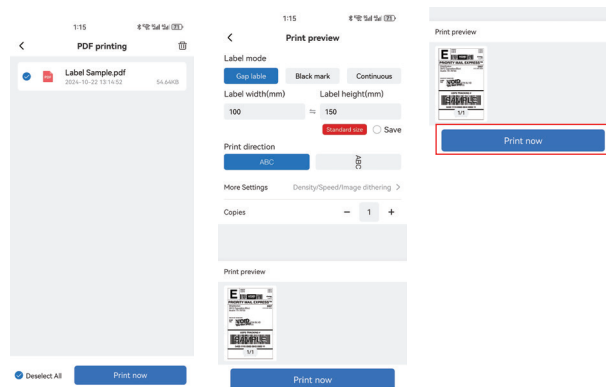
Since the printer needs to measure the length of the thermal paper, a stack of labels with at least 3 sheets is required to complete the process.

CONNECT THE PRINTER WITH ANDROID PHONE

1. Please make sure that you have connected the printer to your Wi-Fi. You can refer to page 7 for using the FlashLabel App or section page 4 for configuring the printer in WPS Mode.



2. Select the image or import pdf file in FlashLabel app that needs to be printed, click print, enter print preview, and select the printing paper size.



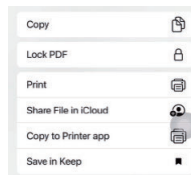
Tips: If you need to print custom-sized labels, we recommend using the FlashLabel APP. Please scan the QR code below to watch how to use the FlashLabel App to print custom labels.



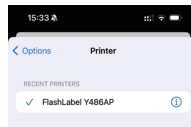
CONNECT THE PRINTER WITH IOS PHONE

Please make sure that you have connected the printer to your Wi-Fi. You can refer to page 7 for using the FlashLabel App or page 4 for configuring the printer in WPS Mode.

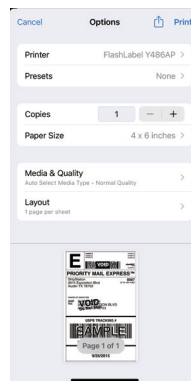
1. Open the file you want to print, then click "More Options" in the upper right corner, and then click "Print".



2. The "Print Preview" screen will appear.



3. Modify the relevant parameters and click "Print".



Tips: If you need to print custom-sized labels, we recommend using the FlashLabel APP. Please scan the QR code below to watch how to use the FlashLabel App to print custom labels.



CONNECT THE PRINTER ON COMPUTER WITH WINDOWS

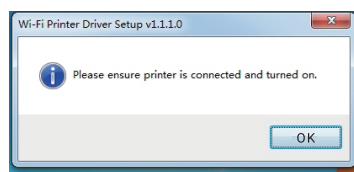
Please make sure that you have connected the printer to your Wi-Fi. You can refer to page 7 for using the FlashLabel App or page 4 for configuring the printer in WPS Mode.

Note: To enhance the user experience on Windows systems, we recommend scanning the QR code below to install the printer driver. This will facilitate future adjustments to parameters such as size and print density.

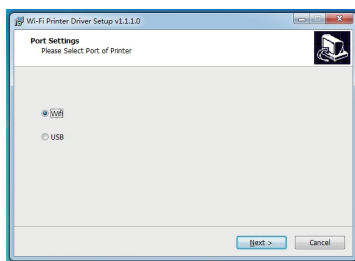


Scan QR code or visit <http://flashlabel.net/y486ap> to download driver.

1. When the driver file is downloaded, click the driver file to install it, and follow the prompts to complete the installation.

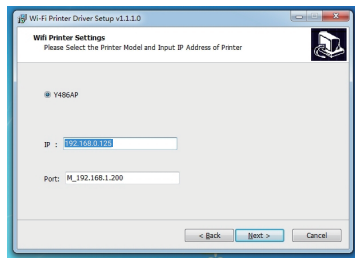


2. Click "Wi-Fi" -> "Next".

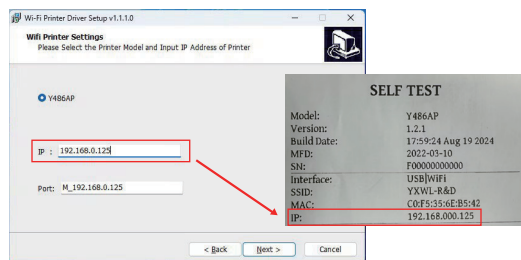


3. Select "Y486AP" and enter the IP address of the printer, you can get IP address from self test page.

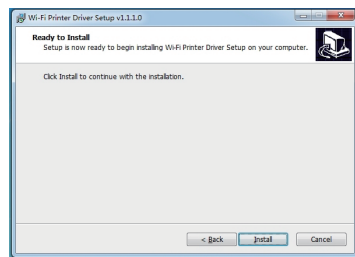
Tips: Press and hold the feeder button for two short beeps to print a test page.

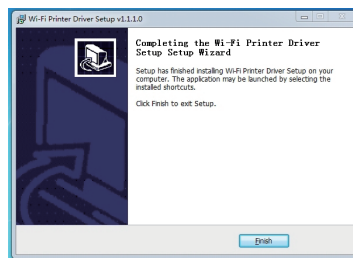


Make sure your computer is connected to the same Wi-Fi network / network segment that the printer. (You can print a self-test page to view the network and corresponding IP address currently connected to the printer.)



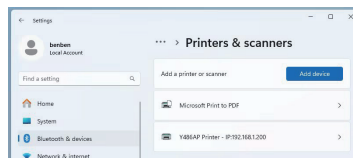
4. Click "Install" -> "Finish" to complete the installation.





5. After the driver installation is complete, the printer will appear in your printer list. If the printer does not appear on your computer, please restart the printer and computer.

You can follow the steps below to view: Go to Settings -> Bluetooth & devices -> Printers & scanners.



6. Open the file to be printed, click the "Print" button, and then select "Y486AP" on the Print preview page.

Print

?

Total: 1 sheet of paper

Printer

Y486AP Printer - IP:192.168.1....

Copies

1

Layout

☒ Portrait

☐ Landscape

Pages

☒ All

☐ e.g. 1-5, 8, 11-13

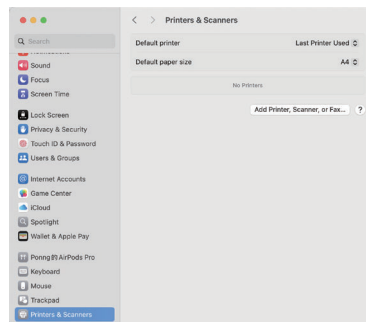
Print

Cancel

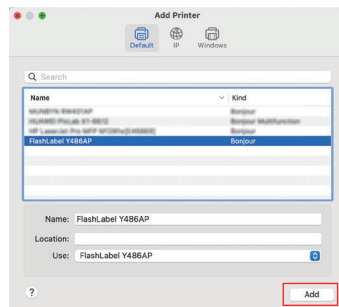
CONNECT THE PRINTER ON COMPUTER WITH MACOS

Follow these steps to finish driver installation on macOS:

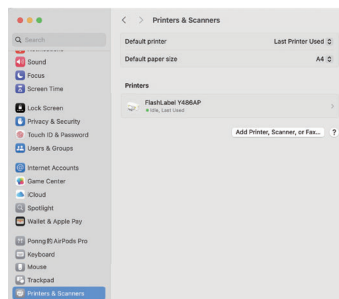
1. Please follow the steps below to add the printer to your Mac device:
Go to System Preferences -> Printers & Scanners -> Click the “Add Printer, Scanner, or Fax” button.



2. Select the Y486AP printer, then click "Add".

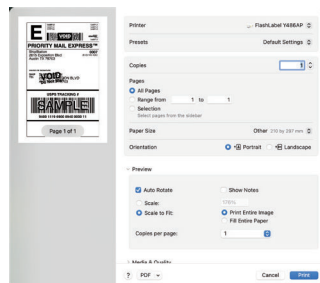


3. It can be displayed after the addition is successful.

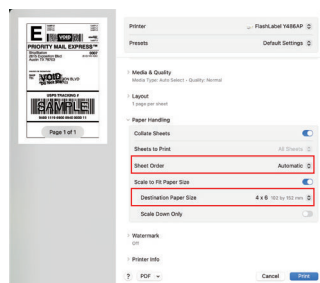


Printer preference setting

1. Open a PDF file with Preview-> Click "File"-> "Print"->Select the printer "Y486AP".



2. Click "Page Order"-> Choose the corresponding paper size according to the loaded label size.



3. After changing settings, you need to click "Save Current Settings as Preset..." to save.



4. Click "Print" to start printing.

USER TIPS

1. When you load the labels, the peeling-off side should face up. Or it would cause printing blank.



2. Make sure there are no particles on the surface of labels to avoid damages to the TPH (Thermal Printer Head).
3. For Windows users, please keep using the same USB Port on your computer to avoid producing unexpected duplicated copies of the printer on your computer.
4. The label size of the Y486AP printer is default to 100mm x 150mm. Each time you change different label sizes, please run the Intelligent Label Calibration process before printing.
5. In case labels keep coming out unexpectedly, just press the feeder button to pause the printer, and clear the printing job from your computer.
6. If there are white spots on printed labels, it indicates that the printer head needs cleaning. Stop printing, and clean the TPH (Thermal Printer Head) after cooling to avoid burns.
7. When the label is jammed accidentally, please open the cover and take out the jammed labels slowly and patiently. The printer will resume after cleaning.

LED STATUS

Light Status	Description	Solution
Green	Wireless disconnected	Ready and no network configured
Blue	Wireless connected	Ready to print using wireless
Flashing Red Fast (Twice a second)	Cover is not closed	Close the cover properly
Flashing Red Slowly (Every second)	Out of paper / Wrong paper size	Re-Load Labels; Run automatic label calibration
Flashing Red and Green (Every second)	Printer head is overheated	Wait until it cools down, the printing job will resume itself
Light off & Buzzer beep	Low voltage	Switch to 24V adapter
Flashing Green	WPS mode	Press WPS button on your router or wait 120 second to exit

Please kindly contact us if you have any issues.
 You can search for more FAQs on our website :
<https://help.flashlabel.com>
 or send email to Help@FlashLabel.com



Scan QR Code to visit
help.flashlabel.com

FEEDER BUTTON INSTRUCTIONS

1. Press once: Feed a blank page / Pause / Resume .

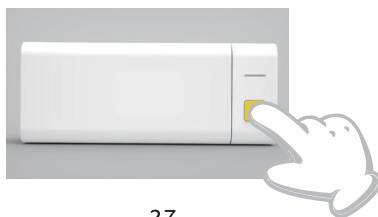
(1) When the printer is in ready status and there are no holding jobs, press the feeder button once, the printer will feed a blank page.

(2) When the printer is running, press once will pause the job, press once again will resume the job.(Although it is not recommended, if you want to urgently stop an unwanted printing task, you may turn off the power directly and don't forget to cancel the print task from the computer at the same time).

2. Press and hold the feeder button for about 3 seconds until you hear one beep, printer will run the Intelligent Label calibration process. This process is recommended each time you change the label sizes.

3. Press and hold the feeder button for about 5 seconds until you hear two beeps.Printer will print a test page. If the test page looks good, it indicates that the printer head is working properly.

4. Press and hold the feeder button for about 15 seconds until you hear five beeps. This will reset the printer to the factory setting. This process is harmless to the printer and can be used if you want the printer to recover from an unknown error.



SAFETY NOTICES

1. DO NOT touch the printer head after use.
2. DO NOT disassemble or repair the unit by yourself.
3. USE ONLY approved accessories.
4. Keep the printer away from water, fire, or other objects that could destroy the components.
5. Keep the printer away from children.
6. DO NOT use the printer if you find any irregularities which could result in electrocution or fire.
7. Please unplug the power when not in use for a long time.

MAINTENANCE

Printer Head Cleaning Steps:

- (1) Please make sure that the printer is powered off and cooling down before cleaning;
- (2) Push the Push Button on the left side to open the printer lid;
- (3) Use the Printer Head Cleaning Wipes to gently apply onto the Thermal Printer Head (no water or other liquid should be applied).

SPECIFICATIONS

Model	Y486AP
Printing Method	Direct Thermal
Interfaces	USB Cable,Bluetooth(optional)
Resolution	203dpi
Max Printing Speed	150mm/s
Power Adapter	24V/2.0A
N.weight	1.87lbs/0.85kg
G.weight	3.48lbs/1.58kg
TPH Printing Life	30km
Paper Width	40-110mm(±2mm)
Paper Thickness	0.06-0.25mm
Paper Height	NO Limitations
Storage Environment	Temperature: -20 to 80℃ Humidity:5-95% (non condensing)
Operating Environment	Temperature: -10 to 50℃ Humidity:10-90% (non condensing)
Dimensions	L200*W79*H83mm

DISPOSAL

This product is subject to the provisions of European Directive 2012/19/ EC. The symbol showing a wheelie bin crossed through indicates that the product requires separate refuse collection in the European Union. This applies to the product and all accessories marked with this symbol. Products marked as such may not be discarded with normal domestic waste, but must be taken to a collection point for recycling electrical and electronic devices.



PAY ATTENTION TO

Pay attention to : This device complies with Part 15 of the FCC Rules.Operation is subject to the following two conditions:(1)This device may not cause harmful interference, and (2)this device must accept any interference received, including interference that may cause undesired operation.

CONTACT US

Enjoy your printing!

If you have any questions, issues or concerns about this product, please contact us for support.



Scan QR Code to visit
help.flashlabel.com



Scan this QR Code using
WhatsApp camera to add us

Website: Help.FlashLabel.com

Email: Help@FlashLabel.com

Manufacturer: Xiamen Print Future Technology Co., LTD.

ADDRESS: Area C, Room 502, No. 17 Kengping Road, GuanKou Town, Jimei District, Xiamen City, Fujian province, China

RELATED STATEMENTS

FCC WARNING

This device complies with part 15 of the FCC Rules. Operation is subject to the following two conditions:

(1) this device may not cause harmful interference, and (2) this device must accept any interference received, including interference that may cause undesired operation.

Any changes or modifications not expressly approved by the party responsible for compliance could void the user's authority to operate the equipment.

NOTE: This equipment has been tested and found to comply with the limits for a Class B digital device, pursuant to Part 15 of the FCC Rules. These limits are designed to provide reasonable protection against harmful interference in a residential installation. This equipment generates, uses and can radiate radio frequency energy and, if not installed and used in accordance with the instructions, may cause harmful interference to radio communications. However, there is no guarantee that interference will not occur in a particular installation. If this equipment does cause harmful interference to radio or television reception, which can be determined by turning the equipment off and on, the user is encouraged to try to correct the interference by one or more of the following measures:

- Reorient or relocate the receiving antenna.
- Increase the separation between the equipment and receiver.
- Connect the equipment into an outlet on a circuit different from that to which the receiver is connected.
- Consult the dealer or an experienced radio/TV technician for help.

To maintain compliance with FCC's RF Exposure guidelines, This equipment should be installed and operated with minimum distance between 20cm the radiator your body: Use only the supplied antenna.