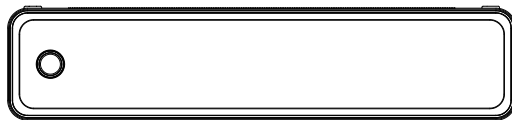


尺寸: 100*130MM

U8 Series

Portable Thermal Printer Instruction Manual



Support Email:
PrinterAfterSales@outlook.com

All Right Reserved.
Assembled in China.

Thermal Printer/USB Cable/Paper Roll*1/Manual

Table of Contents

Thermal Printer

Specification	2
Appearance and Component	3
Button Operating Instructions	4

Download

Apps	5
Drivers	8

Thermal Paper

Usage Method	10
Paper Roll Installation Guide	11
Folded Paper Installation Guide	12

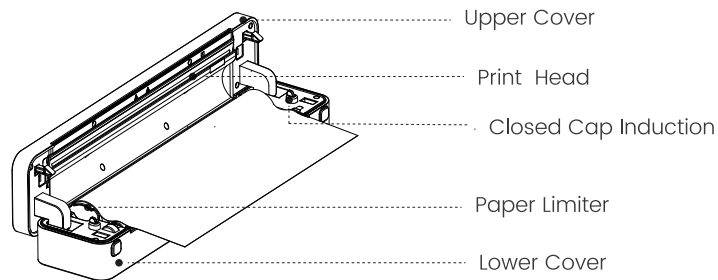
Charging Instructions

Cleaning and Maintenance	13
Warning	14
Safety and Precautions	14

Product Specification

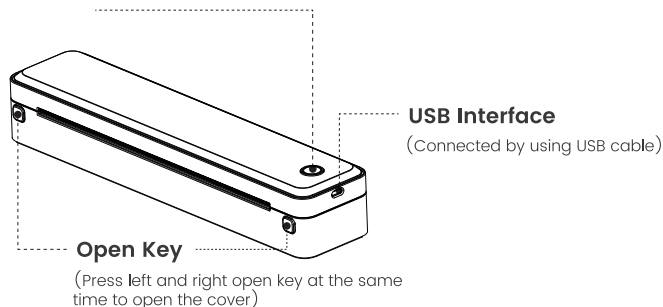
Product Code	U8
FCC ID	2A6FW-U8
Dimension	11.4*2.5*2 Inch
Weight	1.7 lbs
Printing Method	Direct Thermal
Resolution	203 dpi
Max Printing Speed	15mm/s
Input Power	5V \equiv 2.0A
Man-Machine Interface	Key LED Indicator Drive
Communication Interface	USB/BT
Operating Temperature (°C)	0°C ~ +50°C
Working Humidity	10%~90% RH (No Condensation)
Storage Temperature (°C)	-20°C ~ +70°C
Storage Humidity	5%-95% RH (No Condensation)

Appearance and Component



Power Key

(Press and hold for 3 seconds to turn on/off)



Button Operating Instructions

Status	Description	Troubleshoot
Green	Normal operation	
Flashing Red and Green	-Printer head is overheated	-Printer will automatically resume once the printer head has cooled down
Red	-Charging while power off -Top cover open -No paper	-When fully charged, the light turns green -Close the top cover correctly
Flashing Red	Low electric quantity	Charge the printer
flashing green	-Charging while power on	-When tully charged, the green light always on
Blue	Bluetooth pairing successfully	Bluetooth connected successfully

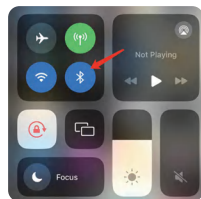
Download via APP

① Scan the QR code to download **SharpFox** App.



② **iOS:** Turn on Bluetooth, allow **SharpFox** App to access.
Android: Turn on Bluetooth and Location, allow **SharpFox** App to access.

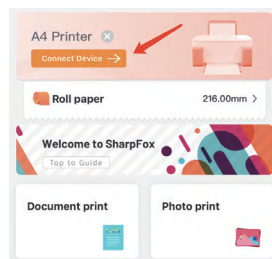
iOS Device



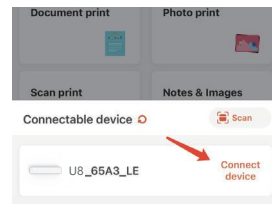
Android Device



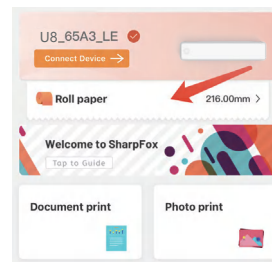
③ Open **SharpFox** App and Tap "Connect Device".



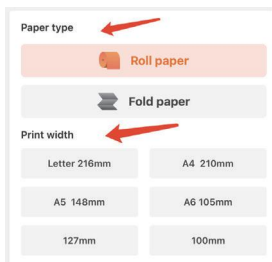
④ Connect the thermal printer device.



⑤ Tap the paper type and paper width.



⑥ Choose the paper type and paper width.
Tap save. (if you need to customize the paper width, enter the number in last row)

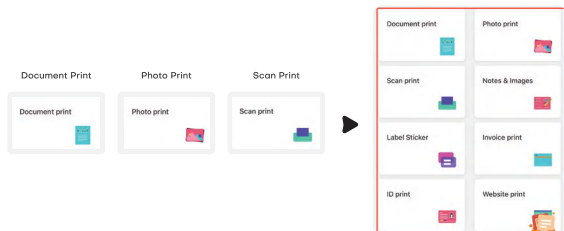


⑦ Choose the printing option.

Document Print: Import File from other Apps – Word/PDF/Excel/PPT/TXT.

Photo Print: Import File from photo album.

Scan Print: Take photo you need to print.

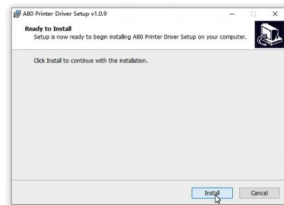


Windows -Thermal Printer Driver Installation

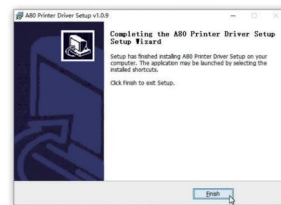
Note: Before installing the driver, turn off the computer antivirus software. Visit <https://help.flashlabel.com>, you can download driver after searching keyword U8.

Turn on the printer. Connect the printer to computer via USB cable. Double-click the compressed file you downloaded to install the driver.

① Click Install.



② Click Finish after installation.

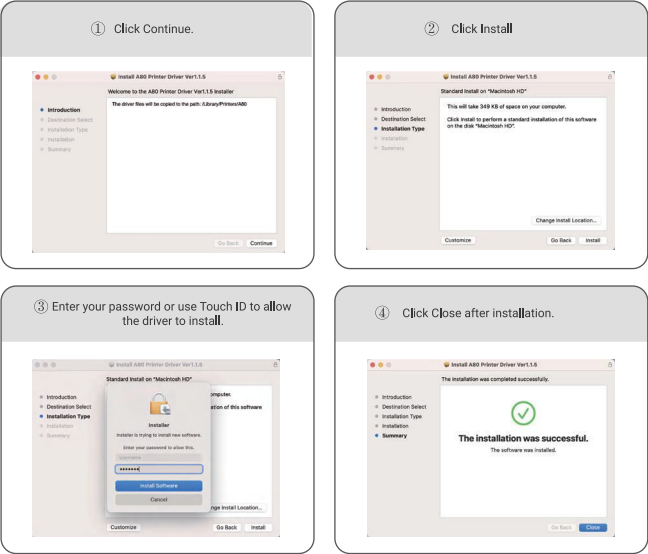


NOTE: SELECT THE CORRECT CORRESPONDING PRINTER DRIVER --A80 BEFORE PRINTING.

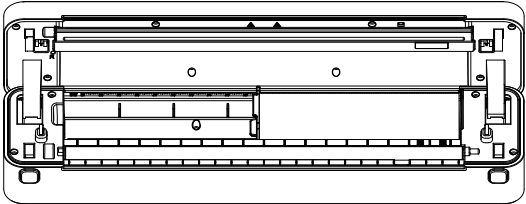
MacOS-Thermal Printer Driver Installation

Note: Before installing the driver, turn off the computer antivirus software. Visit <https://help.flashlabel.com>, you can download driver after searching keyword U8.

Turn on the printer. Connect the printer to computer via USB cable. Double-click the compressed file you downloaded to install the driver.



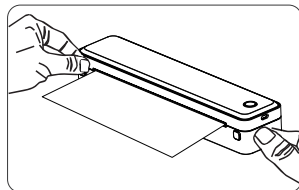
Usage Method



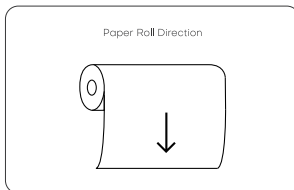
Adjust the paper limiter to fit your paper width.
Paper width available from 2.24 inch to 8.5 inch.

Note: The thermal printer will automatically turn off after 15 minutes if without any operation.

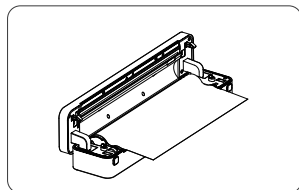
Paper Roll Installation Guide



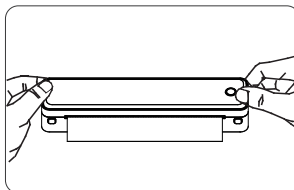
① Press the open key buttons to open the printer cover.



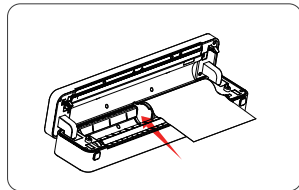
② Make sure the thermal paper roll direction.



③ Lay down the thermal paper. The end of the paper need to expose to the machine.

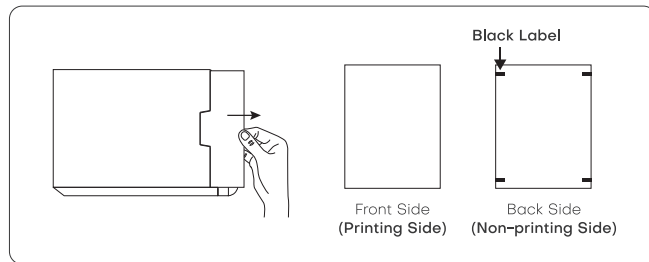


④ Close the printer cover.

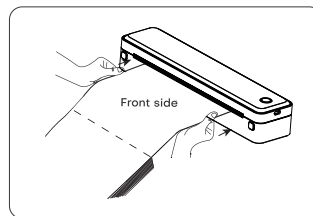


⑤ If you need to adjust the paper width, push the paper limiter against the edge of paper roll.

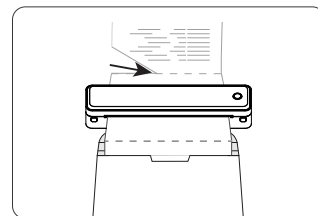
Folded Paper Installation Guide



① Take out the thermal paper and make sure the printing side.
Note: Make sure the paper roll takes out from the thermal printer.

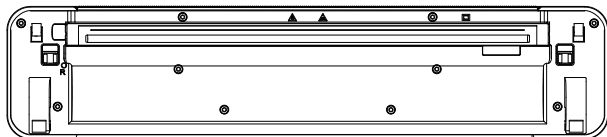


② Make sure the front side of thermal paper and align with the paper inlet. Insert the paper. Make sure the paper sticks inside the printer and get ready for printing.




③ Tear off the paper.

Cleaning and Maintenance



- Please shut down the printer, open the printer cover and take out the paper roll.
- Dip cotton cloth or cotton swabs into it. On the medical alcohol, along the printing head center to around the direction of gently wipe.
- After cleaning the print head, do not use the printer immediately. Please wait 1-2 minutes until the alcohol has completely evaporated.

 Please do not touch the print head directly to avoid damage, especially after printing, do not touch the print head directly to prevent overheating and scalding.

Warning

- The standard of this product is excluded a power adapter. If you use a power adapter to charge, please purchase a certified 5V/2A power adapter that meets the standards.
- This is a professional product, please use the original battery.

Safety and Precautions

- There is a built-in lithium battery, please do not use it in the environment with temperature higher than 40 °C. Keep away from fire and other heat sources, and do not place it in the hot sun, such as closed car.
- Children should be charged and used under the supervision of adults. After full charge, please make sure to pull out the charging line in time to prevent overheating, short circuit or fire.
- Do not put the product in fire or water to avoid battery short circuit or fire or burn.
- Working environment: 0 °C - 50 °C ambient temperature, relative humidity, 10% - 90% RH. Use in (non-condensing) environment, please do not exceed the recommended temperature range.

*If you suspect that there is a problem with the battery, please contact the after-sales service center for assistance.

FCC Caution:

This device complies with part 15 of the FCC Rules. Operation is subject to the following two conditions: (1) This device may not cause harmful interference, and (2) this device must accept any interference received, including interference that may cause undesired operation.

Any Changes or modifications not expressly approved by the party responsible for compliance could void the user's authority to operate the equipment.

Note: This equipment has been tested and found to comply with the limits for a Class B digital device, pursuant to part 15 of the FCC Rules. These limits are designed to provide reasonable protection against harmful interference in a residential installation. This equipment generates uses and can radiate radio frequency energy and, if not installed and used in accordance with the instructions, may cause harmful interference to radio communications. However, there is no guarantee that interference will not occur in a particular installation. If this equipment does cause harmful interference to radio or television reception, which can be determined by turning the equipment off and on, the user is encouraged to try to correct the interference by one or more of the following measures:

- Reorient or relocate the receiving antenna.
- Increase the separation between the equipment and receiver.
- Connect the equipment into an outlet on a circuit different from that to which the receiver is connected.
- Consult the dealer or an experienced radio/TV technician for help.

The device has been evaluated to meet general RF exposure requirement. The device can be used in portable exposure condition without restriction.

