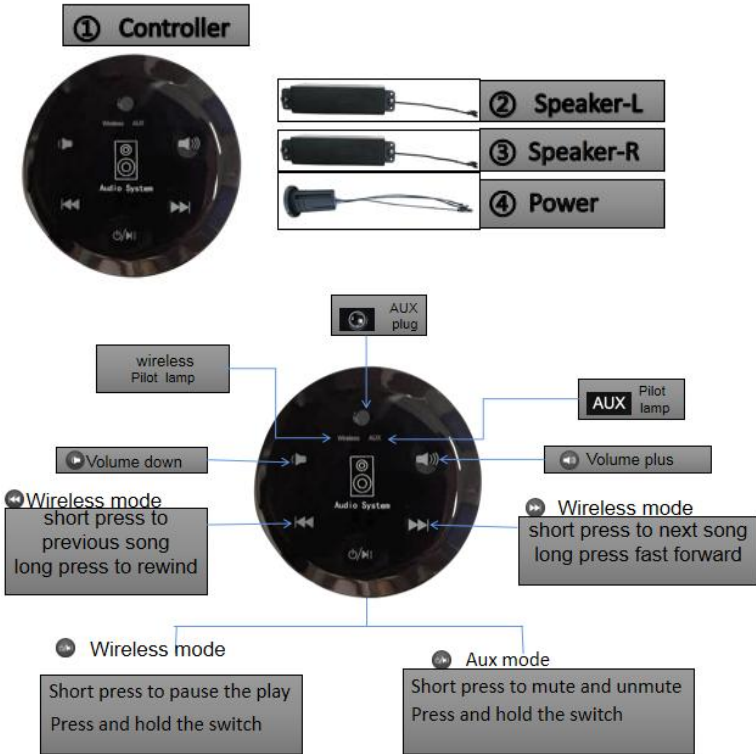


RYYT002-01 User Manual




Overall picture

Wireless Pilot lamp: When the LED is not connected in wireless mode

the LED is blinking, but the LED is connected to the wireless.

AUX Pilot lamp: When playing in AUX mode, the LED light is long on,
and the LED light flashes when silent.

Key tone light : After pressing the key, the key atmosphere light will light up simultaneously for 60 seconds.

Shutdown light:  The LED light under the symbol is off when it is turned on,
and the LED light under the symbol is on when it is turned off.

Product Features and description:

This product is a speaker whose main function is to play music.

Link instruction

1. Input power: After the 12-29V power supply is turned on, the system starts. If the AUX cable is inserted on the top, the system enters the AUX function, if the AUX cable is not inserted on the side, the system enters the wireless function.
2. Turn on the phone to connect to a wireless device, Open the "🔊 Audio System" of the wireless device connected to the mobile phone, and you can play music on the mobile phone.
3. Plug the Aux signal cable into the headphone jack and the sound system will switch to AUX mode.

FCC Warning Statement

Changes or modifications not expressly approved by the party responsible for compliance could void the user's authority to operate the equipment. This equipment has been tested and found to comply with the limits for a Class B digital device, pursuant to Part 15 of the FCC Rules. These limits are designed to provide reasonable protection against harmful interference in a residential installation. This equipment generates uses and can radiate radio frequency energy and, if not installed and used in accordance with the instructions, may cause harmful interference to radio communications. However, there is no guarantee that interference will not occur in a particular installation. If this equipment does cause harmful interference to radio or television reception, which can be determined by turning the equipment off and on, the user is encouraged to try to correct the interference by one or more of the following measures:

- Reorient or relocate the receiving antenna.
- Increase the separation between the equipment and receiver.
- Connect the equipment into an outlet on a circuit different from that to which the receiver is connected.
- Consult the dealer or an experienced radio/TV technician for help.

This device complies with Part 15 of the FCC Rules. Operation is subject to the following two conditions:

- (1) This device may not cause harmful interference, and
- (2) This device must accept any interference received, including interference that may cause undesired operation.

FCC Radiation Exposure Statement

The antennas used for this transmitter must be installed to provide a separation distance of at least 20 cm from all persons and must not be co-located for operating in conjunction with any other antenna or transmitter.