

Dear user, first of all, thank you for your trust! The following is to introduce you the product use process, I hope it can help you to understand the use of the product more quickly.

After you purchase this product, you need to download the "One-Click" APP to use the translation function, please follow the following steps to experience and use our translation function.

The translation earphone currently supports four translation modes

1、Preparation before use

A、Scan the QR code to download and install.



Apple iOS User

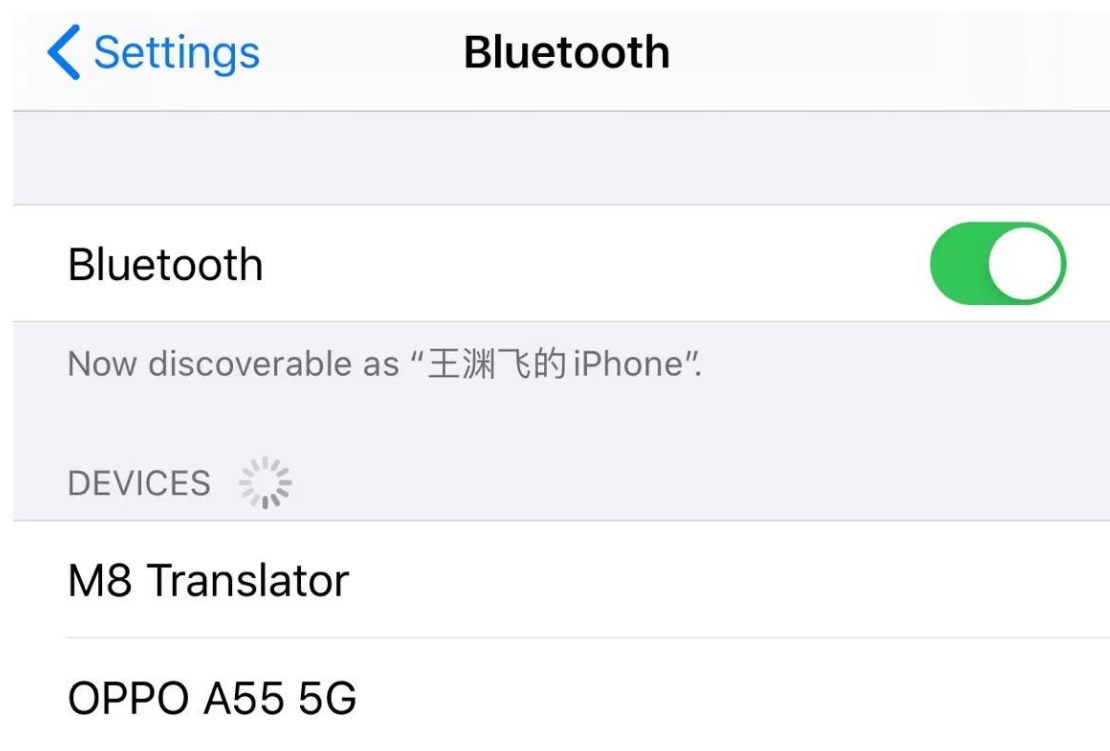



Google play

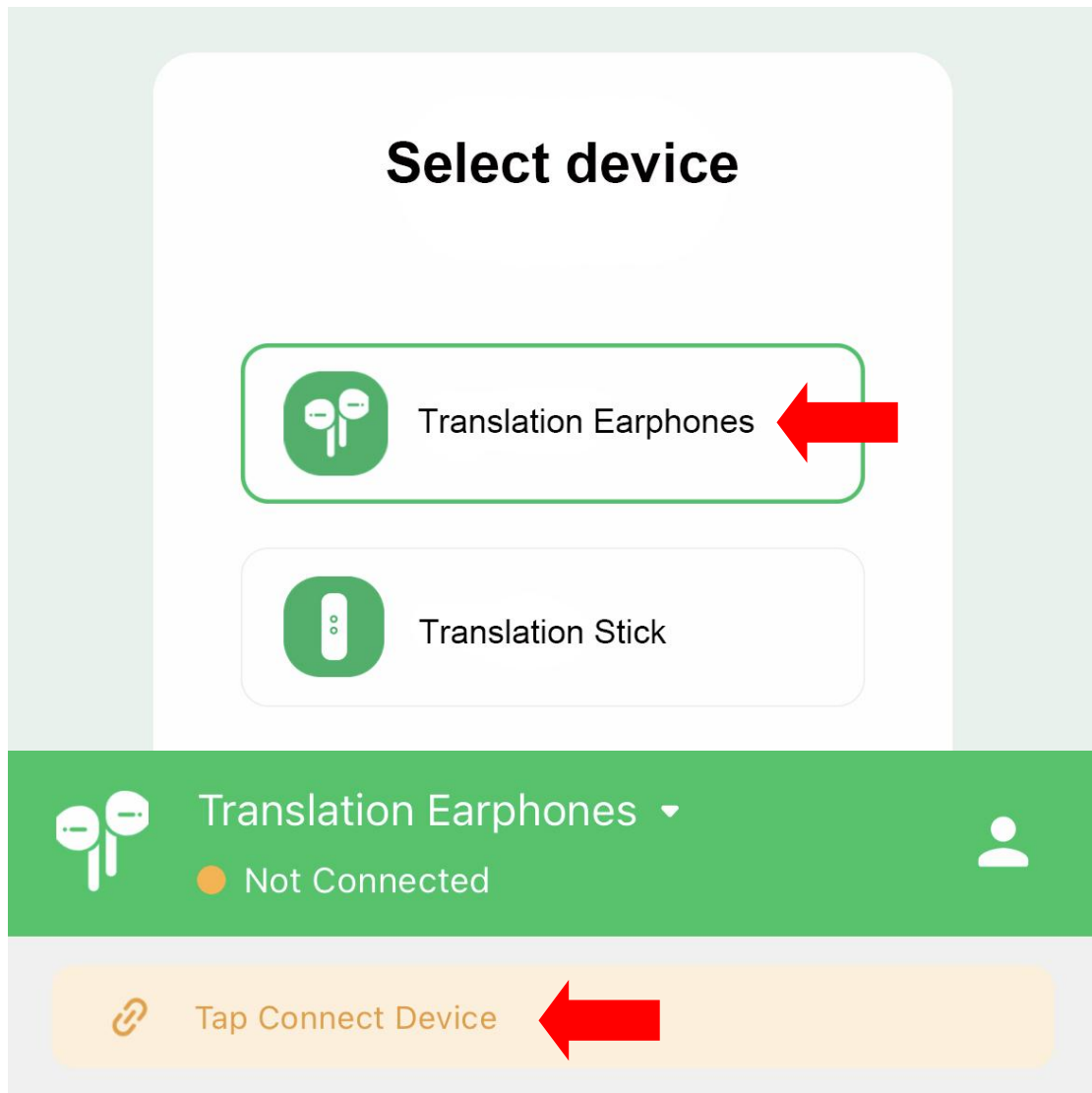
B、Search for the "One-Click" application on IOS Mall or Google Play, download and install the application

2、 Translation earphone connection and pairing

A. Put the headphones back into the charging compartment, turn on and remove them again, and wait for the headphones to pair successfully. Then open Phone Settings - Bluetooth to connect headphones

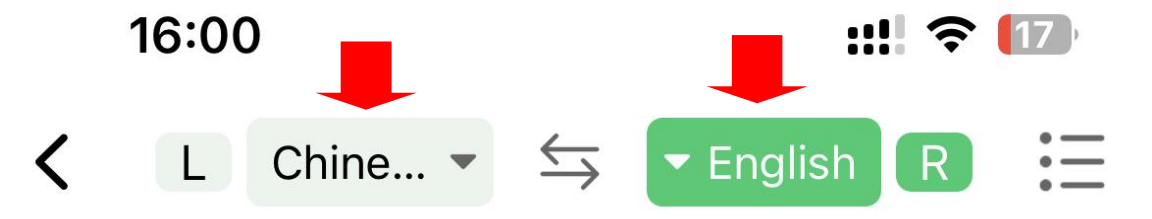


B、 Open the "**One Click**" app and enter the "Translation Earphones" mode. If there is no connected device, please click [] to jump to the settings page, select Bluetooth, Connect your phone device to your phone.



3、Set Language

Open any mode, with the language on the left corresponding to the left ear and the language on the right corresponding to the right ear. Set the desired output language and target language to start the conversation!



4、 Basic Translation Model

- **Touch Mode**

In "Touch mode", one person wears one earphone and clicks the earphone to translate in real time. Suitable for scenarios where an acquaintance is willing to wear your earphone

- **Speaker mode**

In " Speaker mode ", one person wears the earphone , one person holds the phone, suitable for strangers who are not convenient to wear your earphone scenario. (For example: outdoor, shopping, asking for directions, etc.)

- **Free talk mode**

In "Free speech mode",Click the (Start Conversation) button below the screen to start the conversation. No need to touch the headphones and phone. two people each wear a earphone , real-time translation, free communication(Recommended for use in quiet scenes)

5、 Paid Subscription Translation Model

● Offline mode

Before using "offline mode", you need to purchase and download the offline translation package on the APP page in advance, so that you can translate in real time even if there is no network on your cell phone.

● Audio and video translation mode

With a paid subscription, you can use the “Audio/Video Translation” mode, where you can share a link to another person and have a video conversation. There is no distance limitation in this mode.

● Photo Translation mode

After paying for any package, this mode is automatically activated, and you can use your cell phone to take a picture of the target text you need to translate, or import a photo to translate it, and you can copy the contents of the translated text!

Frequently Asked Questions

● No sound in earphones (left & right ears)?

- 1、 Check if the earphone has power,
- 2 、 After putting the earphone back into the charging compartment, delete this earphone's name in the Bluetooth list of the phone and restart it, so that the earphone can automatically pair and connect again.

- **Bluetooth is unstable or the device cannot be found?**

- 1, Make sure the earphone is close to the mobile device to ensure that there is no RF interference.
2. Put the earphone back into the charging case, cover the charging case lid for 20 seconds, and then take it out again for pairing.

- **No response for translation**

- 1、 Try to reboot phone or APP
- 2、 Check whether the network is normal or replace the network.
- 3、 Pronunciation should be as standard, loud, and clear as possible.

Cannot turn on or charge.

- 1、 Check if the headphones have power and if there are any foreign objects on the charging contacts.

When not connected to the translation app, it can be used as a regular earphone.

More features and languages are under continuous development! Please follow the app for updates !

FCC Caution:

This device complies with part 15 of the FCC Rules. Operation is subject to the following two conditions: (1) This device may not cause harmful interference, and (2) this device must accept any interference received, including interference that may cause undesired operation.

Any changes or modifications not expressly approved by the party responsible for compliance could void the user's authority to operate the equipment.

NOTE: This equipment has been tested and found to comply with the limits for a Class B digital device, pursuant to Part 15 of the FCC Rules. These limits are designed to provide reasonable protection against harmful interference in a residential installation. This equipment generates, uses and can radiate radio frequency energy and, if not installed and used in accordance with the instructions, may cause harmful interference to radio communications. However, there is no guarantee that interference will not occur in a particular installation. If this equipment does cause harmful interference to radio or television reception,

which can be determined by turning the equipment off and on, the user is encouraged to try to correct the interference by one or more of the following measures:

- Reorient or relocate the receiving antenna.
- Increase the separation between the equipment and receiver.
- Connect the equipment into an outlet on a circuit different from that to which the receiver is connected.
- Consult the dealer or an experienced radio/TV technician for help.

The device has been evaluated to meet general RF exposure requirement. The device can be used in portable exposure condition without restriction.