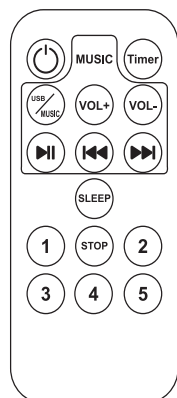
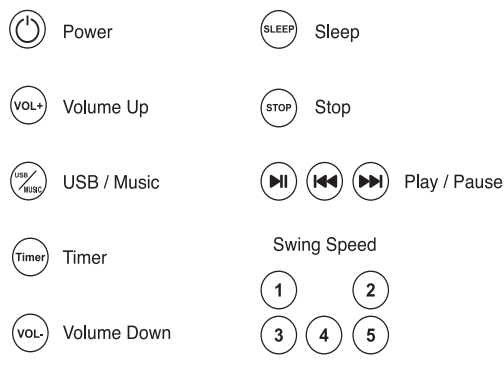


Use Remote Control



Care and Maintenance

1. The product can be wiped with wet cloth and soapy water.
2. Do not use undiluted neutral detergent, gasoline or other organic solvent to wash the product. It may cause damage to the product.
3. Do not use bleach.
4. From time to time, check your product for worn parts, torn material or stitching. Replace or repair the parts as needed
5. If the product is not in use for a long period of time, please store it in the shade where your child cannot access it.

Bluetooth Name

BT-baby or WS-HB18, one of them.

Turn on the mobile phone to search for Bluetooth signals

BT-baby or WS-HB18, and then use the mobile phone to pair bluetooth and connect.

FCC Compliance Statements

This device complies with Part 15 of the FCC Rules. Operation is subject to the following two conditions: (1) this device may not cause harmful interference, and (2) this device must accept any interference received, including interference that may cause undesired operation.

Note: This equipment has been tested and found to comply with the limits for a Class B digital device, pursuant to Part 15 of the FCC Rules. These limits are designed to provide reasonable protection against harmful interference in a residential installation. This equipment generates, uses and can radiate radio frequency energy and, if not installed and used in accordance with the instructions, may cause harmful interference to radio communications. However, there is no guarantee that interference will not occur in a particular installation.

If this equipment does cause harmful interference to radio or television reception, which can be determined by turning the equipment off and on, the user is encouraged to try to correct the interference by one or more of the following measures:

- Reorient or relocate the receiving antenna.
- Increase the separation between the equipment and receiver.
- Connect the equipment into an outlet on a circuit different from that to which the receiver is connected.
- Consult the dealer or an experienced radio/TV technician for help.

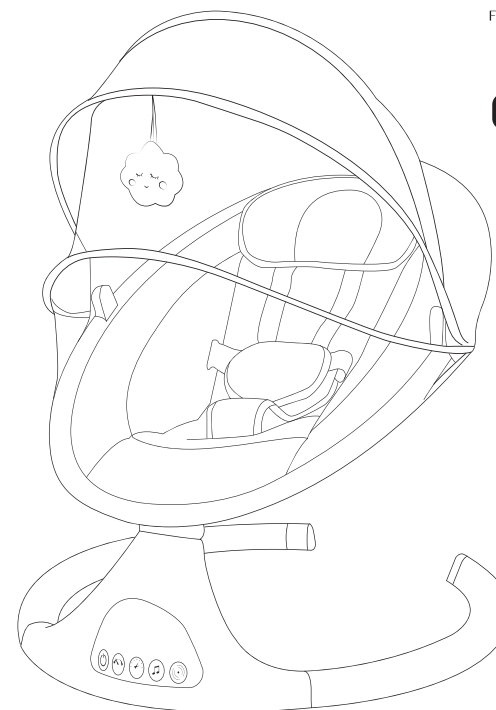
Caution: Changes or modifications not expressly approved by the party responsible for compliance could void the user's authority to operate the equipment.

This equipment complies with FCC radiation exposure limits set forth for an uncontrolled environment. This transmitter must not be co-located or operating in conjunction with any other antenna or transmitter.

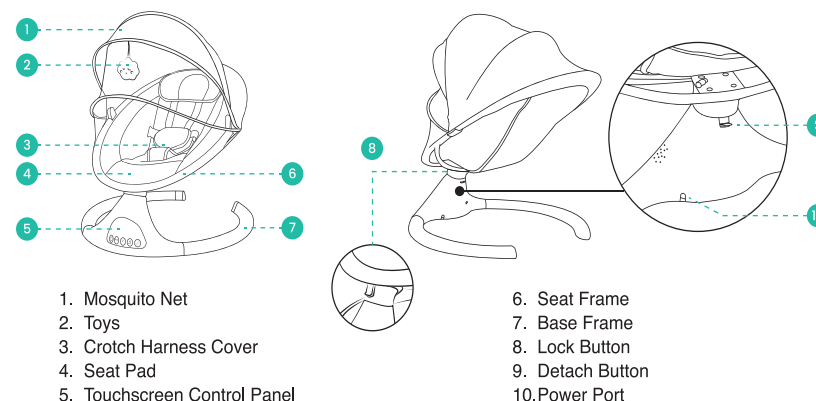
FULL TOUCH SCREEN ELECTRIC SWING



EN12790 European Safety Approval



Thank you for purchasing Sedona and congratulations on becoming part of Prego Baby family. Sedona is a full touch screen with built in Bluetooth function soft electric swing. It moves left and right like a mother always hold the baby in her arms. Made of aluminium alloy, Sedona smart swing is rust resistance and hi-strength quality which is certified to European Standards EN12790.



Thank you for purchasing this product. Please read the manual carefully before use so that you can use this product correctly. Thanks!

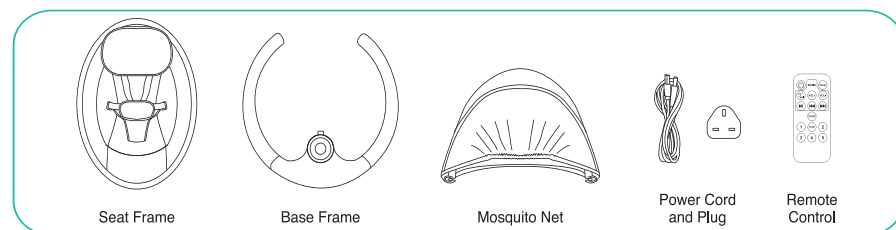
IMPORTANT!

1. Adult assembly required
2. Please read all instructions before assembly and use of the product
3. Care should be taken in unpacking and assembly
4. Examine product frequently for damaged, missing or loose parts
5. DO NOT use if any parts are missing, damaged or broken

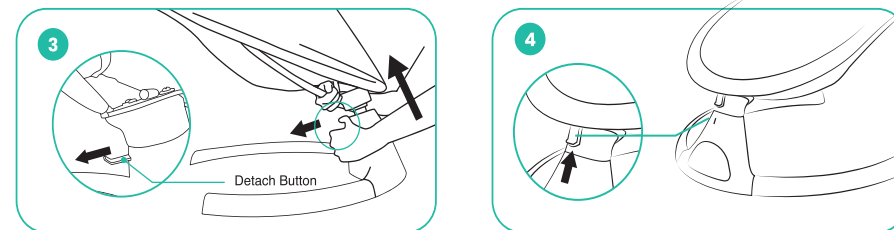
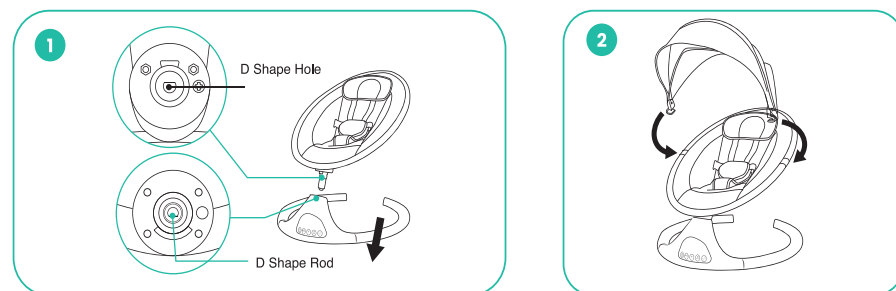
WARNING!

1. Do NOT use this product once your child can sit up unaided or weighs more than 12kg (approximately 0-6 months).
2. NEVER leave the child unattended. Always keep your child in view.
3. Do not use the product once your child can sit unaided.
4. It is dangerous to use this product on an elevated surface e.g. a table.
5. Never use this product on an elevated surface (e.g. a table).
6. Always use the restraint system.
7. This product is not intended for prolonged periods of sleeping.
8. This product does not replace a cot or a bed, when your child needs to sleep, it should be placed in a suitable cot or bed.
9. DO NOT let children play with this product.
10. DO NOT move or lift this product with the baby inside it.
11. Be aware of the risk of open fire and other sources of strong heat such as electric bar fires, gas fires, etc in the vicinity of the product.
12. To avoid strangulation, DO NOT place items with a string around your child's neck, suspend strings from this product, or attach strings to toys.
13. All assembly fittings should be unfolded completely and tightened properly before using the product.
14. DO NOT use the product if any parts are broken, torn or missing.
15. DO NOT use accessories or replacement parts other than those approved by the manufacturer.
16. Non-rechargeable batteries are not to be recharged.
17. Rechargeable batteries are to be removed from the product before being charged.
18. Rechargeable batteries are only to be charged under adult supervision.
19. Different types of batteries or new and used batteries are not to be mixed.
20. Batteries are to be inserted with the correct polarity.
21. Exhausted batteries are to be removed from the product.
22. The supply terminals are not to be short-circuited.
23. Change batteries when product ceases to operate satisfactorily.
24. Keep the batteries out of children's reach.
25. To prevent possible injury by entanglement, remove the toys when the child starts trying to get up on its hands and knees in a crawling position.
26. To avoid suffocation, remove plastic bag and packaging materials before using this product. The plastic bag and packaging materials should then be kept away from babies and children.

What's in the box

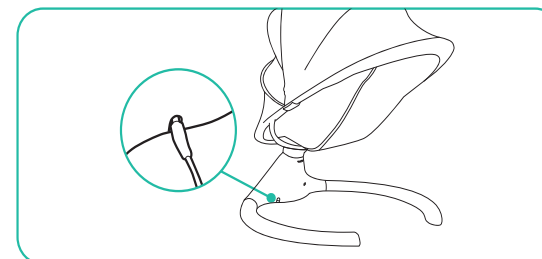


Assembling Guide



1. Insert the seat frame into the base, make sure the D shape rod is aimed at the D shape hole in the base.
2. Install mosquito net by placing both clippers on the white part of the seat frame.
3. To detach the seat frame from the base, pull the detach button then pull out the seat frame.
4. To lock the swing or prevent it from moving, push up to lock. If product does not swing left and right, check if the button is locked.

Use Wall Plug or Powerbank



Warning! Please use AC power adaptor provided by the manufacturer. Unauthorized AC power adaptor may damage product. Alternatively, you can power product with powerbank.

Use Touchscreen Panel



Warning! Do not operate the touchscreen with wet, oily or dirty hands. If the screen has any moisture or if your fingers are wet, the touch screen may not respond or an incorrect operation may occur. A damage may result and it is not covered under warranty.

1. Power ON/OFF
2. Swing speed. 5 swing speed available.
3. Timer. 3 settings: 8/15/30 mins.
4. Music ON/OFF.
5. Smart Sensor. When this button is turn on, Sedona can detect a baby's movement and response automatically by swinging at the lowest speed at the same time playing music for 5 minutes. This feature is only activated when Sedona is completely stationary for at least 3-5 seconds.