

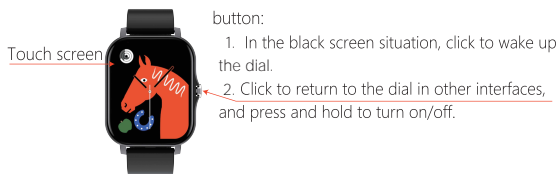


Product manual

【Package Contents】

Watch (including watch strap), charge cable, product manual.

Function introduction:

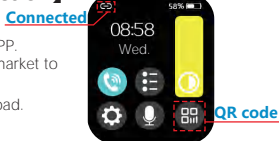


button:

1. In the black screen situation, click to wake up the dial.
2. Click to return to the dial in other interfaces, and press and hold to turn on/off.

【APP download and connection】

1. Scan the QR code below to download APP.
2. search iband directly in the application market to download
3. scan QR code icon on watch for download.



(Android 5.0 or IOS12.1 and above)

- Method 1: Search device for binding
Open APP, search for devices in "device binding" interface, and click binding
- Method 2: Scan QR code for binding
1.Watch: shortcut menu - QR code
2.Open APP - "Device Binding" - click the QR code icon, in watch shortcut menu - Settings - Device Information, the watch MAC address will be displayed. You can determine your device through MAC address in device list. After the watch is successfully bound, the watch will automatically connect with the mobile phone when APP opened each time. The data can be synchronized with drop-down on APP step counting interface.

● Blood pressure: stick the watch close to wrist, the best wearing position is above wrist bone and arm. Real-time blood pressure can be measured, adult diastolic pressure: 60~80 (mmHg) adult systolic pressure: 100~120 (mmHg)

● Blood oxygen monitoring: stick the watch close to wrist, the best wearing position is at wrist bone above arm, which can measure real-time blood oxygen.

● Step counter: count the step count data of day. Click left to view step count record, clear the data at 00:00 a.m., or view it in APP. APP can set standard value for step count of day and reach the set step count standard.

● Sleep monitoring: monitor the quality of sleep, and view the data of sleep duration, deep sleep, light sleep, etc.

● Breathing: you can set the length and rhythm of breathing in this interface.

● Women's health: intelligently predict women's physiological period, safety period, menstrual period and ovulation period, carefully record your physiological cycle and give a reminder.

● Bluetooth photographing: When mobile phone is not in lock screen state, and APP interface is opened, the watch enters Bluetooth photographing interface, and mobile phone enters photographing interface, then click the watch to take photos, the mobile phone will take photos and store the photos.

● Bluetooth music: can control the music in mobile phone, using "+", "-" to adjust the voice volume.

● Alipay: bind Alipay authorization to replace mobile payment.

● Reminder of long sitting: Set the time of long sitting. When the time comes, the watch will have a vibration reminder and the interface will have a prompt icon.

● Settings: include device information, search for mobile phone, language switch, clear data, restart, shutdown,

● Find mobile phone: When the watch is connected to mobile phone, click the "Start" button, and mobile phone will ring and vibrate.

● Weather: If APP is not connected, enter the weather display prompt, and current weather temperature will be displayed after connecting the APP.

● Stopwatch: start and end the stopwatch.

● Information: It can display the content of message push, such as SMS, QQ, WeChat, etc. (the system above IOS12.1 will block SMS reminder by default).

● Alarm: you can customize alarm clock in APP on mobile phone, and long press to delete alarm clock.

● Style: you can set and change the UI style.

● SIRI: Press and hold to release SIRI voice function

【Connect to Bluetooth call】

Open this icon, the green color is for open situation

Watch shortcut menu, click the phone icon, open the phone settings, Bluetooth interface and search corresponding Bluetooth model, and click Connect.

【Product indicate】

Left slide: switch the dial Right slide: Sidebar function



Slide up and down: shortcut menu/information

【Function introduction】

1. Sidebar function: the right slide of dial appears, and left slide exits sidebar.
2. Menu list: click the rotation button to enter menu, click each menu icon to enter the corresponding function, and press rotation button to return to dial.
3. Shortcut menu: slide the dial up and down to display shortcut functions (including: Bluetooth call switch, brightness adjustment, QR code, settings, voice, etc.). Click the icon to directly access this function.
4. Dial switch: Rotate the button to switch the dial
4. Dialing: connect mobile phone and make Bluetooth call, then you can make a call with the watch
- Call record: it can display the call record on watch, and click phone number to dial.
- Contact: After the watch is successfully connected to APP, you can add a contact to APP. After the contact is successfully added, the watch phonebook will be displayed synchronously. The watch can click contact in phonebook to make a call (note: the watch needs to be connected)

● Sport:

1. Enter the exercise mode (running, hiking, cycling, mountain climbing, badminton, etc.), select exercise mode, click again to start the corresponding exercise mode data monitoring: exercise time, distance, calories consumed and heart rate data

2. Record: record all motion data

● Heart rate: put the watch close to wrist, the best place to wear it is on wrist bone above arm. The real-time heart rate value can be measured, and normal value is 60-100 times/minute

【Notes】

● Avoid wearing the watch in hot water shower, sauna and diving in daily use. When the watch is stained with water, please dry the water stains on surface with a soft cloth before operation.

● The measurement results of this product are for reference only. The data provided are not used for any medical purpose or basis

● If using power adapter for charging, power adapter should meeting the requirements of corresponding safety standards to avoid bursting or fire caused by fake power adapter.

【Basic parameters】

Product name: SmartWatch

Size: 51*40*12mm

Body material: zinc alloy

Watch band material: silicone

Battery capacity: 180mAh

Bluetooth: BT3.0+5.2

Support system: Android 5.0 or IOS12.1 and above

Supporting languages: English, Chinese, Russian, Spanish, Italian, Portuguese, Dutch, Turkish, Vietnamese, Hebrew, Thai, Arabic, Malay, Burmese, Persian

FCC STATEMENT:

This device complies with Part 15 of the FCC Rules. Operation is subject to the following two conditions:

This device may not cause harmful interference, and

This device must accept any interference received, including interference that may cause undesired operation.

Warning: Changes or modifications not expressly approved by the party responsible for compliance could void the user's authority to operate the equipment.

NOTE: This equipment has been tested and found to comply with the limits for a Class B digital device, pursuant to Part 15 of the FCC Rules. These limits are designed to provide reasonable protection against harmful interference in a residential installation. This equipment generates uses and can radiate radio frequency energy and, if not installed and used in accordance with the instructions, may cause harmful interference to radio communications. However, there is no guarantee that interference will not occur in a

particular installation. If this equipment does cause harmful interference to radio or television reception, which can be determined by turning the equipment off and on, the user is encouraged to try to correct the interference by one or more of the following measures:

- Reorient or relocate the receiving antenna.
- Increase the separation between the equipment and receiver.
- Connect the equipment into an outlet on a circuit different from that to which the receiver is connected.
- Consult the dealer or an experienced radio/TV technician for help.

RF warning statement:
The device has been evaluated to meet general RF exposure requirement. The device can be used in portable exposure condition without restriction